

CORPORATION LINE EXTENSION

EAST LAKE AVENUE

BELLEFONTAINE, OHIO.

PART OF SECTION 33, T-4, R-14, LAKE TOWNSHIP IN LOGAN COUNTY.



I hereby certify the accompanying plat to be a correct representation of the property to be annexed to the City of Bellefontaine, Ohio.

Cecil E. Mengerink
 Cecil E. Mengerink
 Reg. Surv. No 3151.
 City Engineer.

Approved and accepted by the Planning Commission this _____ day of _____, 1960.

 Chairman.

Approved and accepted at a regular meeting on the _____ day of _____, 1960, and recorded in Journal _____, pages _____.

 Commissioners
 of
 Logan County

Transferred this _____ day of _____, 1960.

 Auditor of Logan County.

Approved and accepted by Ordinance No _____ as an addition to the City of Bellefontaine, Ohio, at a regular meeting of the City Council on the _____ day of _____, 1960.

Received for Record _____ o'clock _____ M. on _____, 1960, and Recorded in Plat Book _____, Volume _____, Page _____.

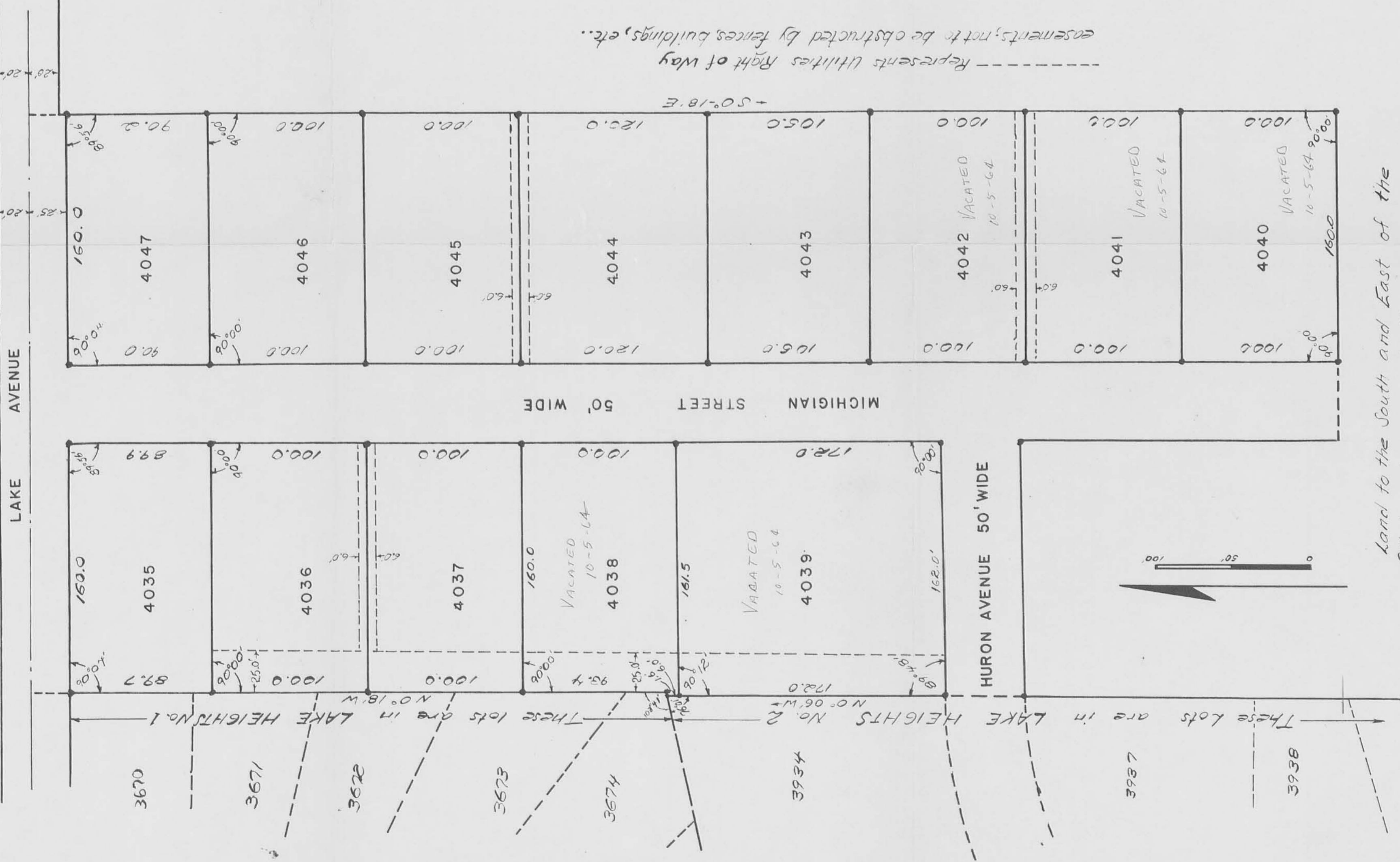
_____, Mayor.
 _____, Clerk.

 Recorder of Logan County.

INDEXED ON MAP
 3424 1P

Reading on file in office of City Engineer.

William E. Tharp et ux 50.60



Represents Utilities Right of Way easements, not to be obstructed by fences, buildings, etc.

Land to the South and East of the Allotment owned by Roy E. Morris et ux. 345A

AUDITOR'S OFFICE LOGAN COUNTY, OHIO

The within lots transferred this 9th day of March, 1957.

Harry E. Tharp
Auditor of Logan County

RECORDER'S OFFICE LOGAN COUNTY, OHIO

Received for record at 10:00 O'clock A. M. on the 9th day of March, 1957.
Recorded in Plat Book 4 Volume D Page 41

Journals L. S. Strashed
Recorder of Logan County

3424

INDEXED ON MAP

3424

INDEXED ON MAP

MORRIS ALLOTMENT
BELLEFONTAINE, OHIO
SECTION 27 TOWN 4 RANGE 14
LAKE TOWNSHIP LOGAN COUNTY
1957 1" = 50'

SURVEYOR'S CERTIFICATE

The accompanying plat represents a Sub-division of land in Section 27, Town 4, Range 14, Lake Township, Logan County, Ohio and in the city of Bellefontaine. The tract has an area of 1.33 acres in Streets and 5.06 acres in lots making a total of 6.48 acres. Surveyed July, 1956. The width of the streets are as shown. Iron bars were placed at all lot corners. All measurements are in feet and tenths of feet. I hereby certify that the accompanying plat is a correct representation of the MORRIS ALLOTMENT.

Queen E. Shirk
Registered Surveyor 164211

DEDICATION

Know all men by these present that Roy Morris et ux and William Prall et ux proprietors of the land indicated in the accompanying plat has authorized the laying out of same as indicated in the accompanying plat and do hereby dedicate the streets to the use of the public forever.

Witnesses
Roy E. Morris
William Prall
Proprietors

STATE OF OHIO, COUNTY OF LOGAN: SS

Be it remembered that on the 11th of February in the year of our Lord One Thousand Nine Hundred Fifty Seven before me, a Notary Public in and for said County, personally came Roy E. Morris, William Prall, and Ruth E. Prall grantors in the foregoing dedication who acknowledged the signing thereof to be their free and voluntary act and deed.

Notary Public Expires
My Commission Expires Dec 20-1957
Notary Public, Logan County



ACCEPTANCE

The annexed plat was adopted by Ordinance No. 2452 as an addition to the city of Bellefontaine State of Ohio. Said ordinance was passed at a regular meeting of Council on the 25 day of February, 1957.
Mayor Paul E. Watkins
Pres. of Council Clerk

JJ-103

A-120

JJ-103 A-120