

REC'D 10-23-08 SMY ok

# Lee Surveying and Mapping Co., Inc.

Land Surveys • Topography • Subdivisions • Construction Layout

117 N. Madriver St.  
Bellefontaine OH 43311



Phone: (937) 593-7335  
Fax: (937) 593-7444

## F & S ASSOCIATES, LLC 0.733 ACRE

Lying in Section 33, Town 4, Range 14, City of Bellefontaine, Lake Township, Logan County, Ohio.

Being out of the F & S Associates, LLC, 1.512 acre tract as deeded and described in Official Record 885, Page 964, Tract One of the Logan County Records of Deeds and being more particularly described as follows:

Commencing on a MAG nail found on the intersection of center-lines of Clarkson Avenue and South Main Street.

THENCE, with the center-line of South Main Street (80 feet wide), N 04°-04'-00"W, a distance of 331.42 feet to a point.

THENCE, with the south line of the Buck & Buck Enterprises LLC 3.062 acre tract (O.R. 928, Pg. 445) extended, S 86°-08'-18"E, a distance of 42.91 feet to a 5/8 inch iron rod found on the east right-of-way of South Main Street and the east line of The City of Bellefontaine, Ohio, 0.683 acre tract (O.R. 900, Pg. 315).

THENCE, with the east right-of-way of South Main Street and the 0.683 acre tract, S 04°-04'-00"E, a distance of 148.50 feet to a MAG nail set at the TRUE POINT OF BEGINNING, passing a 5/8 inch iron rod found at 53.99 feet.

THENCE, S 86°-08'-17"E, a distance of 199.81 feet to a 5/8 inch iron rod set.

THENCE, S 06°-11'-33"E, a distance of 178.77 feet to a 5/8 inch iron rod set.

THENCE, with the north lines of the F & S Associates, LLC 0.581 acre tract (O.R. 885, Pg. 964, Tract Four), the following three courses:

With a curve to the left, having a central angle of 20°-22'-19", a radius of 280.00 feet, an arc distance of 99.56 feet, a chord bearing N 74°-15'-26"W, a distance of 99.03 feet to a 5/8 inch iron rod found.

N 84°-26'-36"W, a distance of 91.83 feet to a 5/8 inch iron rod found.

With a curve to the right, having a central angle of 80°-22'-36", a radius of 25.00 feet, an arc length of 35.07 feet, a chord bearing N 44°-15'-18"W, a distance of 32.27 feet to a 5/8 inch iron rod found on the east right-of-way of South Main Street.

THENCE, with the east right-of-way of South Main Street and the east line of the aforesaid 0.683 acre tract, N 04°-04'-00"W, a distance of 132.65 feet to the point of beginning.

Containing 0.733 acre.

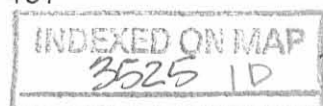
The basis for bearings is the center-line of South Main Street, being N 04°-04'-00"W, and all other bearings are from angles and distances measured in a field survey by Lee Surveying and Mapping Co., Inc. on October 21, 2008.



ORIGINAL STAMP IN GREEN

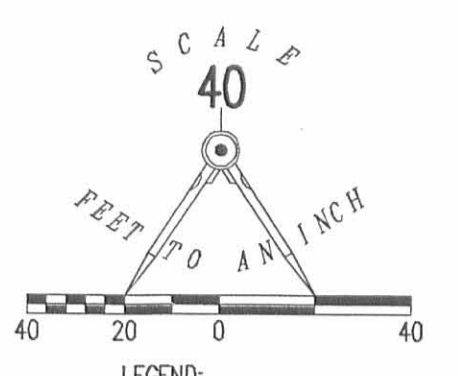
Description prepared by:

William K. Bruce  
Professional Surveyor 7437  
October 22, 2008



1734108

REV'D 10-23-08 SWM OK



- LEGEND:
- MAG NAIL SET
  - 5/8 INCH IRON ROD FOUND
  - 5/8 INCH IRON ROD SET
  - ⊗ RAILROAD SPIKE FOUND
  - MAG NAIL FOUND

BUCK & BUCK ENTERPRISES LLC  
3.062 ACRES  
O.R. 928, PG 445

INGRESS/EGRESS EASEMENT (COMMON DRIVE)

(BASIS FOR BEARINGS)  
N 04°04'00" W  
331.42'  
THE CITY OF BELLEFONTAINE, OHIO  
0.683 ACRE  
O.R. 900, PG. 315

F & S ASSOCIATES, LLC  
1.512 ACRES  
O.R. 885, PG. 964  
TRACT ONE

F & S ASSOCIATES, LLC  
5.728 ACRES  
O.R. 885, PG. 964  
TRACT THREE

SOUTH MAIN STREET

0.733 ACRE

CLARKSON AVENUE

F & S ASSOCIATES, LLC  
0.581 ACRE  
O.R. 885, PG. 964  
TRACT FOUR

PROPOSED KENT DRIVE  
0.581 ACRE

OHIO LAND HOLDING COMPANY  
0.584 ACRE  
O.R. 913, PG. 192

KENT DRIVE (60') (TO BE VACATED)  
PLAT CABINET A, SLIDE 713



SURVEY OF 0.733 ACRE OUT OF THE  
F & S ASSOCIATES, LLC  
1.512 ACRE TRACT  
OFFICIAL RECORD 885, PAGE 964  
TRACT ONE  
SECTION 33, TOWN 4, RANGE 14  
CITY OF BELLEFONTAINE  
LAKE TOWNSHIP  
LOGAN COUNTY, OHIO

CURVE	DELTA ANGLE	RADIUS	ARC LENGTH	CHORD BEARING	CHORD LENGTH
C1	20°22'19"	280.00'	99.56'	N 74°15'26" W	99.03'
C2	80°22'36"	25.00'	35.07'	N 44°15'18" W	32.27'

SURVEYED BY:



*William K. Bruce*  
WILLIAM K. BRUCE  
PROFESSIONAL SURVEYOR 7437  
OCTOBER 21, 2008

COPYRIGHT 2008 BY:  
LEE SURVEYING & MAPPING CO., INC.  
117 North Madriver Street  
BELLEFONTAINE, OHIO 43311  
(937) 593-7335

THE PROPOSED LOCATION OF KENT DRIVE WAS PROVIDED BY  
BELLEFONTAINE CITY ENGINEER, TIMOTHY NOTESTINE P.E., P.S.

2 WORKING DAYS  
**BEFORE YOU DIG**  
CALL TOLL FREE 800-362-2764  
OHIO UTILITIES PROTECTION SERVICE

INDEXED ON MAP  
3526 1P

KSS D1008 1734108 L-1734-1

# Lee Surveying and Mapping Co., Inc.

Land Surveys • Topography • Subdivisions • Construction Layout

117 N. Madriver St.  
Bellefontaine OH 43311



Phone: (937) 593-7335  
Fax: (937) 593-7444

## F & S ASSOCIATES, LLC 4.178 ACRES

Lying in Section 33, Town 4, Range 14, City of Bellefontaine, Lake Township, Logan County, Ohio.

Being all of the F & S Associates, LLC 1.512 acre tract and part of the 5.728 acre tract as deeded and described in Official Record 885, Page 964, Tract One and Tract Three of the Logan County Records of Deeds and being more particularly described as follows:

Commencing on a MAG nail set on the intersection of the center-lines of Clarkson Avenue and South Main Street.

THENCE, with the center-line of South Main Street, N 04°-04'-00"W, a distance of 331.42 feet to a point.

THENCE, within the right-of-way of South Main Street, S 86°-08'-18"E, a distance of 42.91 feet to a 5/8 inch iron rod set on the east right-of-way of South Main Street at the TRUE POINT OF BEGINNING.

THENCE, S 86°-08'-18"E, a distance of 261.26 feet to a railroad spike set.

THENCE, N 54°-47'-09"E, a distance of 31.73 feet to a railroad spike set.

THENCE, N 85°-56'-00"E, a distance of 177.38 feet to a 5/8 inch iron rod set.

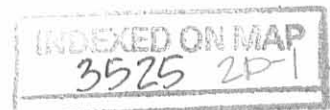
THENCE, with the west line of Cross Pointe Condominiums Phase III (Plat Cabinet A, Slide 751-B) and Jado Ville (Plat Cabinet A, Slide 713-A), S 06°-11'-33"E, a distance of 526.03 feet to a 5/8 inch iron rod set.

THENCE, with the north right-of-way of Kent Drive (60 feet wide, Plat Cabinet A, Slide 713), N 86°-12'-00"W, a distance of 35.32 feet to a 5/8 inch iron rod set.

THENCE, with the northerly lines of the F & S Associates, LLC 0.581 acre tract (O.R. 885, Pg. 964, Tract Four), the following six courses:

With a curve to the right, having a central angle of 33°-47'-42", a radius of 220.00 feet, an arc length of 129.76 feet, a chord bearing N 64°-26'-21"W, a distance of 127.89 feet to a 5/8 inch iron rod set.

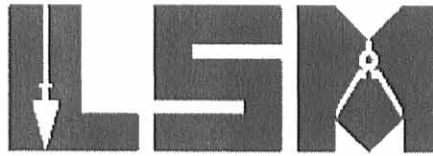
N 47°-32'-30"W, a distance of 100.15 feet to a 5/8 inch iron rod set.



# Lee Surveying and Mapping Co., Inc.

Land Surveys • Topography • Subdivisions • Construction Layout

117 N. Madriver St.  
Bellefontaine OH 43311



Phone: (937) 593-7335  
Fax: (937) 593-7444

With a curve to the left, having a central angle of  $07^{\circ}-43'-32''$ , a radius of 280.00 feet, an arc length of 37.75 feet, a chord bearing  $N 51^{\circ}-24'-16''W$ , a distance of 37.73 feet to a 5/8 inch iron rod set.

With a curve to the left, having a central angle of  $29^{\circ}-10'-34''$ , a radius of 280.00 feet, an arc length of 142.58 feet, a chord bearing  $N 69^{\circ}-51'-19''W$ , a distance of 141.05 feet to a 5/8 inch iron rod set.

$N 84^{\circ}-26'-36''W$ , a distance of 91.83 feet to a 5/8 inch iron rod set.

With a curve to the right, having a central angle of  $80^{\circ}-22'-36''$ , a radius of 25.00 feet, an arc length of 35.07, a chord bearing  $N 44^{\circ}-15'-18''W$ , a distance of 32.27 feet to a 5/8 inch iron rod set on the east right-of-way of South Main Street.

THENCE, with the east right-of-way of South Main Street and the east line of the City of Bellefontaine, Ohio 0.683 acre tract (O.R. 900, Pg. 315),  $N 04^{\circ}-04'-00''W$ , a distance of 281.15 feet to the point of beginning, passing a 5/8 inch iron rod set at 227.16 feet.

Containing 4.178 acres.

The basis for bearings is the center-line of South Main Street, being  $N 04^{\circ}-04'-00''W$ , and all other bearings are from angles and distances measured in a field survey by Lee Surveying and Mapping Co., Inc. on March 23, 2005, June 22, 2005 and July 7, 2008.



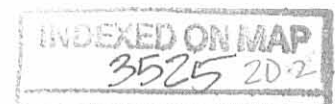
ORIGINAL STAMP IN GREEN

Description prepared by:

A handwritten signature in black ink that reads 'William K. Bruce'.

William K. Bruce  
Professional Surveyor 7437  
September 5, 2008

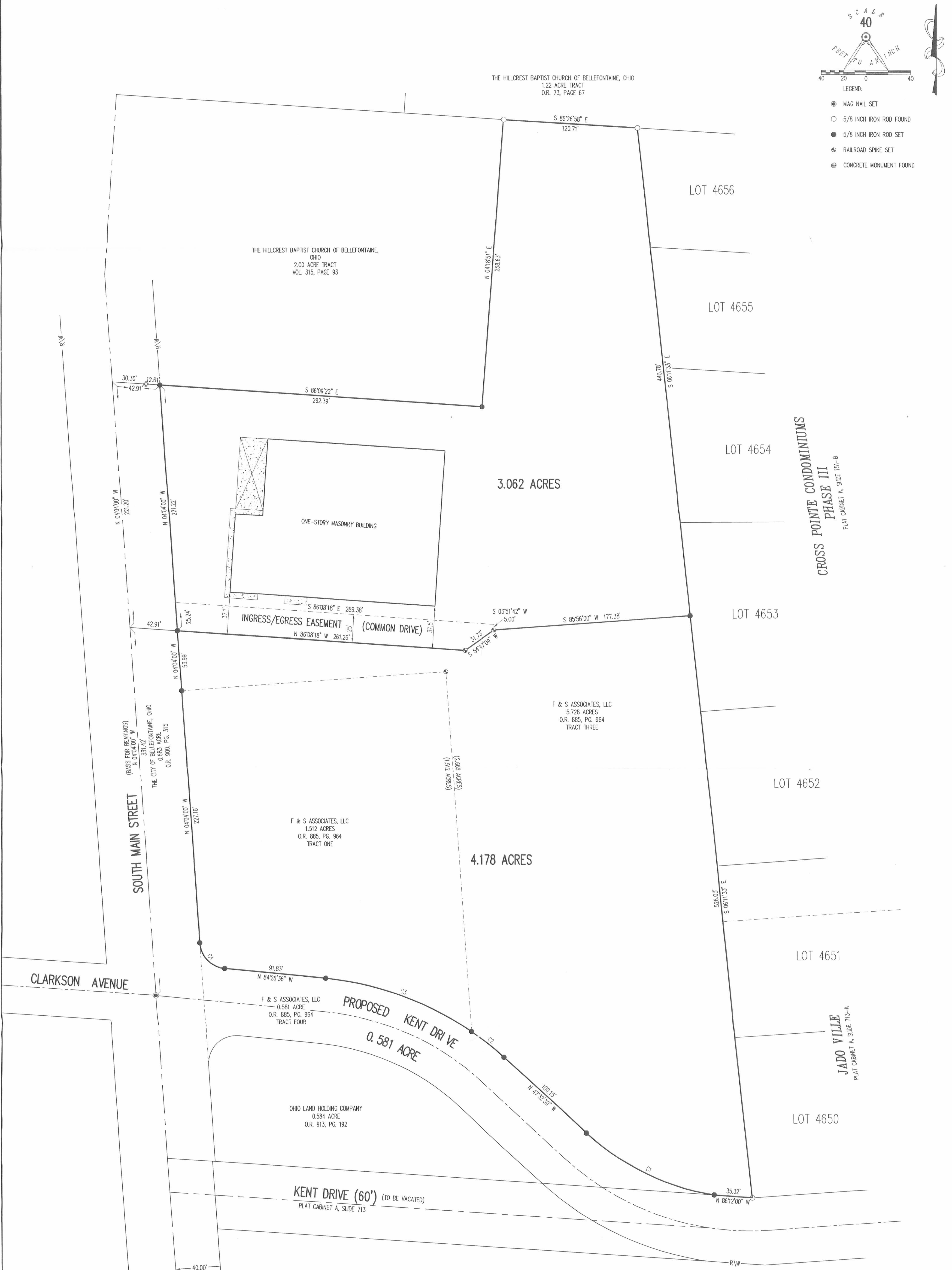
1734088



REC'D 9-9-08 SMY/BK

SCALE  
40  
FEET TO 1 INCH

LEGEND:  
 ● MAG NAIL SET  
 ○ 5/8 INCH IRON ROD FOUND  
 ● 5/8 INCH IRON ROD SET  
 ⚡ RAILROAD SPIKE SET  
 ⊕ CONCRETE MONUMENT FOUND



CURVE	DELTA ANGLE	RADIUS	ARC LENGTH	CHORD BEARING	CHORD LENGTH
C1	33°47'42"	220.00'	129.76'	N 64°26'21" W	127.89'
C2	07°43'32"	280.00'	37.75'	N 51°24'16" W	37.73'
C3	29°10'34"	280.00'	142.58'	N 69°51'19" W	141.05'
C4	80°22'36"	25.00'	35.07'	N 44°15'18" W	32.27'

SURVEY OF TWO TRACTS OUT OF THE  
F & S ASSOCIATES, LLC  
5.728 ACRE TRACT AND 1.512 ACRE TRACT  
OFFICIAL RECORD 885, PAGE 964  
TRACT ONE AND TRACT THREE  
SECTION 33, TOWN 4, RANGE 14  
CITY OF BELLEFONTAINE  
LAKE TOWNSHIP  
LOGAN COUNTY, OHIO  
SURVEYED BY:

*William K. Bruce*  
WILLIAM K. BRUCE  
PROFESSIONAL SURVEYOR 7437  
MARCH 23, 2005  
REVISED JUNE 22, 2005  
REVISED JULY 7, 2008  
REVISED SEPTEMBER 5, 2008



COPYRIGHT 2008 BY:  
LEE SURVEYING & MAPPING CO., INC.  
117 North Madison Street  
BELLEFONTAINE, OHIO 43311  
(937) 593-7335  
KSS 00908 1734088 L-1734-1

THE PROPOSED LOCATION OF KENT DRIVE WAS PROVIDED BY  
BELLEFONTAINE CITY ENGINEER, TIMOTHY MOTESLINE P.E., P.S.

2 WORKING DAYS  
BEFORE YOU DIG  
CALL TOLL FREE 800-362-2764  
OHIO UTILITIES PROTECTION SERVICE

INDEXED ON MAP  
3525 2P

REF ID 7-9-08 SMY RIC

# Lee Surveying and Mapping Co., Inc.

Land Surveys • Topography • Subdivisions • Construction Layout

117 N. Madriver St.  
Bellefontaine OH 43311



Phone: (937) 593-7335  
Fax: (937) 593-7444

## F & S ASSOCIATES, LLC 3.062 ACRES

Lying in Section 33, Town 4, Range 14, City of Bellefontaine, Lake Township, Logan County, Ohio.

Being out of the F & S Associates, LLC 5.728 acre tract as deeded and described in Official Record 885, Page 964, Tract Three of the Logan County Records of Deeds and being more particularly described as follows:

Commencing on a MAG nail set on the intersection of the center-lines of Clarkson Avenue and South Main Street.

THENCE, with the center-line of South Main Street, N 04°-04'-00"W, a distance of 552.62 feet to a point.

THENCE, with the north line of The City of Bellefontaine, Ohio, 0.683 acre tract (O.R. 900, Pg. 315), S 86°-09'-22"E, a distance of 42.91 feet to a 5/8 inch iron rod set on the east right-of-way of South Main Street at the TRUE POINT OF BEGINNING, passing a concrete monument found at 30.30 feet.

THENCE, with the lines of The Hillcrest Baptist Church of Bellefontaine, Ohio, 2.00 acre tract (Vol. 315, Pg. 93), the following two courses:

S 86°-09'-22"E, a distance of 292.39 feet to a 5/8 inch iron rod set.

N 04°-18'-51"E, a distance of 258.63 feet to a 5/8 inch iron rod found.

THENCE, with the south line of The Hillcrest Baptist Church of Bellefontaine, Ohio, 1.22 acre tract (O.R. 73, Pg. 67), S 86°-26'-58"E, a distance of 120.71 feet to a 5/8 inch iron rod found.

THENCE, with the west line of Cross Pointe Condominiums Phase III (Plat Cabinet A, Slide 751-B), S 06°-11'-33"E, a distance of 440.78 feet to a 5/8 inch iron rod set.

THENCE, S 85°-56'-00"W, a distance of 177.38 feet to a railroad spike set.

THENCE, S 54°-47'-09"W, a distance of 31.73 feet to a railroad spike set.

THENCE, N 86°-08'-18"W, a distance of 261.26 feet to a 5/8 inch iron rod set on the east right-of-way of South Main Street.

THENCE, with the east right-of-way of South Main Street and the east line of the aforesaid 0.683 acre tract, N 04°-04'-00"W, a distance of 221.22 feet to the point of beginning.

Containing 3.062 acres.

The basis for bearings is the center-line of South Main Street, being N 04°-04'-00"W, and all other bearings are from angles and distances measured in a field survey by Lee Surveying and Mapping Co., Inc. on March 23, 2005, June 22, 2005 and July 7, 2008.



ORIGINAL STAMP IN GREEN

Description prepared by:

A handwritten signature in black ink that reads 'William K. Bruce'.

William K. Bruce  
Professional Surveyor 7437  
July 7, 2008



1734078

REC ID 7-9-08 SMM OK

# Lee Surveying and Mapping Co., Inc.

Land Surveys • Topography • Subdivisions • Construction Layout

117 N. Madriver St.  
Bellefontaine OH 43311



Phone: (937) 593-7335  
Fax: (937) 593-7444

## F & S ASSOCIATES, LLC INGRESS/EGRESS EASEMENT

Lying in Section 33, Town 4, Range 14, City of Bellefontaine, Lake Township, Logan County, Ohio.

Being an ingress/egress easement over a portion of the F & S Associates, LLC 5.728 acre tract as deeded and described in Official Record 885, Page 964, Tract Three of the Logan County Records of Deeds and being more particularly described as follows:

Commencing on a MAG nail set on the intersection of the center-lines of Clarkson Avenue and South Main Street.

THENCE, with the center-line of South Main Street, N 04°-04'-00"W, a distance of 552.62 feet to a point.

THENCE, with the north line of The City of Bellefontaine, Ohio, 0.683 acre tract (O.R. 900, Pg. 315), S 86°-09'-22"E, a distance of 42.91 feet to a 5/8 inch iron rod set on the east right-of-way of South Main Street, passing a concrete monument found at 30.30 feet.

THENCE, with the east right-of-way of South Main Street and the east line of the said 0.683 acre tract, S 04°-04'-00"E, a distance of 195.98 feet to a point at the TRUE POINT OF BEGINNING.

THENCE, S 86°-08'-18"E, a distance of 289.38 feet to a point.

THENCE, S 03°-51'-42"W, a distance of 5.00 feet to a railroad spike set.

THENCE, S 54°-47'-09"W, a distance of 31.73 feet to a railroad spike set.

THENCE, N 86°-08'-18"W, a distance of 261.26 feet to a 5/8 inch iron rod set on the east right-of-way of South Main Street.

THENCE, with the east right-of-way of South Main Street and the east line of the aforesaid 0.683 acre tract, N 04°-04'-00"W, a distance of 25.24 feet to the point of beginning.

The basis for bearings is the center-line of South Main Street, being N 04°-04'-00"W, and all other bearings are from angles and distances measured in a field survey by Lee Surveying and Mapping Co., Inc. on March 23, 2005, June 22, 2005 and July 7, 2008.

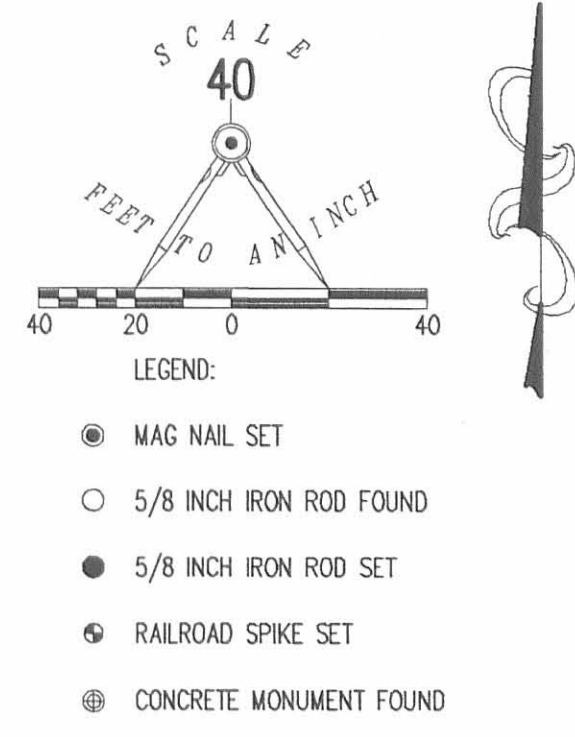


Description prepared by:

William K. Bruce  
Professional Surveyor 7437  
July 7, 2008

1734078



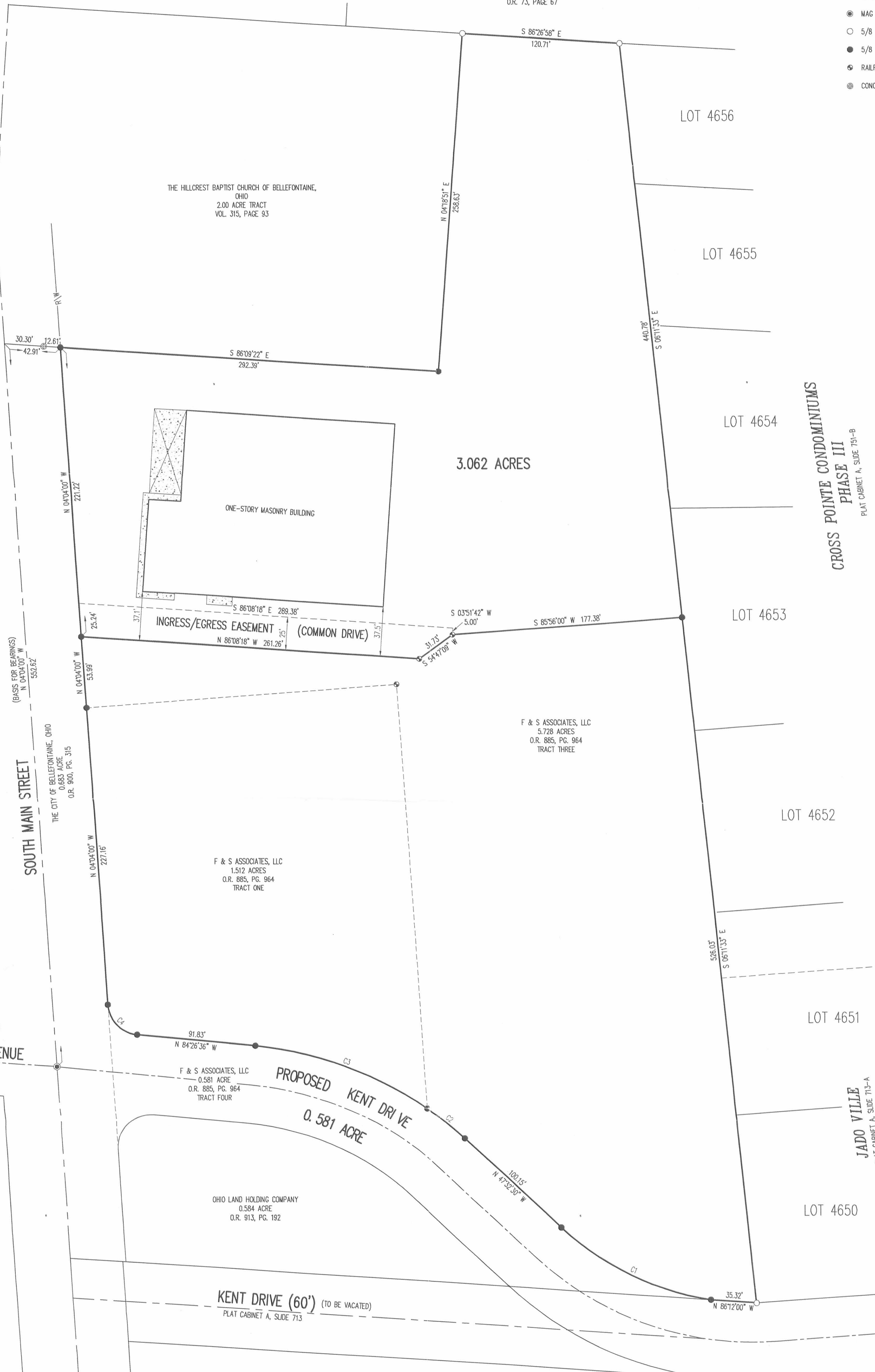


THE HILLCREST BAPTIST CHURCH OF BELLEFONTAINE, OHIO  
1.22 ACRE TRACT  
O.R. 73, PAGE 67

THE HILLCREST BAPTIST CHURCH OF BELLEFONTAINE, OHIO  
2.00 ACRE TRACT  
VOL. 315, PAGE 93

3.062 ACRES

CROSS POINTE CONDOMINIUMS  
PHASE III  
PLAT CABINET A, SLIDE 751-B



CLARKSON AVENUE

SOUTH MAIN STREET

PROPOSED KENT DRIVE  
0.581 ACRE

KENT DRIVE (60') (TO BE VACATED)  
PLAT CABINET A, SLIDE 713

SURVEY OF 3.062 ACRES OUT OF THE  
F & S ASSOCIATES, LLC  
5.728 ACRE TRACT  
OFFICIAL RECORD 885, PAGE 964  
TRACT THREE  
SECTION 33, TOWN 4, RANGE 14  
CITY OF BELLEFONTAINE  
LAKE TOWNSHIP  
LOGAN COUNTY, OHIO

SURVEYED BY:

*William K. Bruce*  
WILLIAM K. BRUCE  
PROFESSIONAL SURVEYOR 7437  
MARCH 23, 2005  
REVISED JUNE 22, 2005  
REVISED JULY 7, 2008



COPYRIGHT 2008 BY:  
LEE SURVEYING & MAPPING CO., INC.  
117 North Madriver Street  
BELLEFONTAINE, OHIO 45311  
(937) 593-7335  
KSS 00708 1734078 L-1734-1

CURVE	DELTA ANGLE	RADIUS	ARC LENGTH	CHORD BEARING	CHORD LENGTH
C1	33°47'42"	220.00'	129.76'	N 64°26'21" W	127.89'
C2	07°43'32"	280.00'	37.75'	N 51°24'16" W	37.73'
C3	29°10'34"	280.00'	142.58'	N 69°51'19" W	141.05'
C4	80°22'36"	25.00'	35.07'	N 44°15'18" W	32.27'

THE PROPOSED LOCATION OF KENT DRIVE WAS PROVIDED BY  
BELLEFONTAINE CITY ENGINEER, TIMOTHY NOTESTINE P.E., P.S.

2 WORKING DAYS  
BEFORE YOU DIG  
CALL TOLL FREE 800-362-2764  
OHIO UTILITIES PROTECTION SERVICE

INDEXED ON MAP  
8525 2P

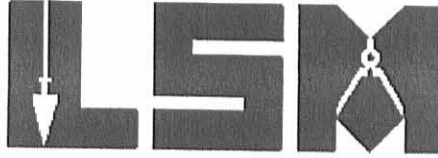
ORIGINAL STAMP IN GREEN



# Lee Surveying and Mapping Co., Inc.

Land Surveys • Topography • Subdivisions • Construction Layout

117 N. Madriver St.  
Bellefontaine OH 43311



Phone: (937) 593-7335  
Fax: (937) 593-7444

## F & S ASSOCIATES, LLC 0.450 ACRE

Lying in Section 33, Town 4, Range 14, Lake Township, City of Bellefontaine, Logan County, Ohio.

Being out of the F & S Associates, LLC 5.728 acre tract as deeded and described in Official Record 885, Page 964 Tract Three in the Logan County Records of Deeds and being more particularly described as follows:

Commencing at a 5/8 inch iron rod found at the northwest corner of Lot 4656 of Jado Ville (Plat Cabinet A, Slide 713-A) also being the northwest corner of Cross Pointe Condominiums Phase III (Plat Cabinet A, Slide 751-B).

THENCE, with the west line of said Jado Ville and Cross Pointe Condominiums Phase III, S 6°-11'-33"E, a distance of 440.78 feet to a 5/8 inch iron rod set at THE TRUE POINT OF BEGINNING.

THENCE, with the west line of said Jado Ville and Cross Pointe Condominiums Phase III, S 6°-11'-33"E, a distance of 34.38 feet to a 5/8 inch iron rod found.

THENCE, with the north line extended of the F & S Associates, LLC 1.512 acre tract (O.R. 885, Pg. 964, Tract One), S 85°-56'-00"W, a distance of 464.57 feet to a 5/8 inch iron rod found, passing a railroad spike found at 224.57 feet.

THENCE, with the east line of the F & S Associates, LLC 0.683 acre tract (O.R. 885, Pg. 964, Tract Two), N4°-04'-00"W, a distance of 66.11 feet to a MAG nail set.

THENCE, S 86°-13'-58"E, a distance of 232.95 feet to a MAG nail set.

THENCE, N 85°-56'-00"E, a distance of 232.52 feet to the point of beginning.

Containing 0.450 acre.

The basis for bearings is the west line of Cross Pointe Condominiums Phase III, being S 6°-11'-33"E, and all other bearings are from angles and distances measured in a field survey by Lee Surveying and Mapping Co., Inc. on December 6, 2007.

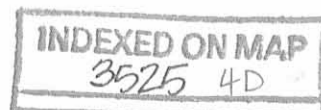


ORIGINAL STAMP IN GREEN

Description prepared by:

William K. Bruce  
Professional Surveyor 7437  
December 6, 2007

L-1734127

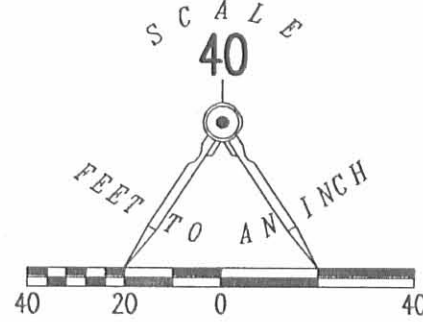


REV'D 12-10-07 S.M.J.

THE HILLCREST BAPTIST CHURCH OF BELLEFONTAINE, OHIO  
1.22 ACRE TRACT  
O.R. 73, PAGE 67

LEGEND

- 5/8 INCH IRON ROD SET
- 5/8 INCH IRON ROD FOUND
- ⊗ RAILROAD SPIKE FOUND
- MAG NAIL SET



F & S ASSOCIATES, LLC  
5.728 ACRE TRACT  
O.R. 885, PG. 964  
TRACT THREE

0.450 ACRES

F & S ASSOCIATES, LLC  
1.512 ACRE TRACT  
O.R. 885, PG. 964  
TRACT ONE

LOT 4656  
**JADO VILLE**  
PLAT CABINET A, SLIDE 713-A

LOT 4653  
**CROSS POINTE CONDOMINIUMS  
PHASE III**  
PLAT CABINET A, SLIDE 751-B  
LOT 4652

F & S ASSOCIATES, LLC  
0.683 ACRE TRACT  
O.R. 885, PG. 964  
TRACT TWO



R/W

N 04°04'00" W  
66.11'

N 04°04'00" W  
424.59'

S 86°13'58" E  
232.95'

N 85°56'00" E  
232.52'

464.57'  
S 85°56'00" W

224.57'

BASIS FOR BEARINGS  
S 06°11'33" E  
440.78'

34.38'  
S 06°11'33" E

**KENT DRIVE (60')**  
PLAT CABINET A, SLIDE 713

A SURVEY OF A 0.450 ACRE TRACT OUT OF THE  
F & S ASSOCIATES, LLC  
5.728 ACRE TRACT  
OFFICIAL RECORD 885, PAGE 964 TRACT THREE  
SECTION 33, TOWN 4, RANGE 14  
CITY OF BELLEFONTAINE  
LAKE TOWNSHIP  
LOGAN COUNTY, OHIO

SURVEYED BY:

*William K. Bruce*

WILLIAM K. BRUCE  
PROFESSIONAL SURVEYOR 7437  
DECEMBER 6, 2007



ORIGINAL STAMP IN GREEN

COPYRIGHT 2007 BY:  
**LEE SURVEYING & MAPPING CO., INC.**  
117 North Madriver Street  
BELLEFONTAINE, OHIO 43311  
(937) 593-7335  
surveys@lsminc.us  
ADW D1207 1734127 L-1734127-3

2 WORKING DAYS

**BEFORE YOU DIG**

CALL TOLL FREE **800-362-2764**

OHIO UTILITIES PROTECTION SERVICE

INDEXED ON MAP  
3525 4P

REC'D 5-10-06 SWY OK

# Lee Surveying and Mapping Co., Inc.

Land Surveys • Topography • Subdivisions • Construction Layout

117 N. Madriver St.  
Bellefontaine OH 43311



Phone: (937) 593-7335  
Fax: (937) 593-7444

**1975 - 2005 - 30 YEARS OF EXCELLENCE**

**F & S ASSOCIATES  
2.572 ACRES  
AUTO DEALERSHIP PARCEL**

Lying in Section 33, Town 4, Range 14, Lake Township, City of Bellefontaine, Logan County Ohio.

Being out of the F & S Associates 5.728 acre tract as deeded and described in Official Record 781, Page 792 and being more particularly described as follows:

Commencing at a MAG nail set at the intersection of center-lines of South Main Street (U.S. Route 68) (60 feet wide), and Kent Drive (60 feet wide).

THENCE, with the center-line of South Main Street, N 4°-04'-00"W, a distance of 730.12 feet to a point.

THENCE, with the south line of the Hillcrest Baptist Church of Bellefontaine, Ohio 2.00 acre tract (Vol. 315, Pg. 93), S 86°-09'-22"E, a distance of 42.91 feet to a 5/8 inch iron rod set at THE TRUE POINT OF BEGINNING, passing a concrete monument found at 30.30 feet.

THENCE, with the south line of the said 2.00 acre tract and the said line extended, S 86°-09'-22"E, 461.10 feet to a 5/8 inch iron rod set, passing a 5/8 inch iron rod set at 292.39 feet.

THENCE, with the west line of the Cross Point Condominiums Phase III (Plat Cabinet A, Slide 751-B) and the said line extended, S 6°-11'-33"E, a distance of 211.90 feet to a 5/8 inch iron rod set.

THENCE, with the north line extended and the north line of the F & S Associates 1.512 acre tract (O.R. 781, Pg. 783), S 85°-56'00"W, a distance of 464.57 feet to a 5/8 inch iron rod set, passing a railroad spike set at 224.57 feet.

THENCE, with the east line of the F & S Associates 0.683 acre tract (O.R. 781, Pg. 783) and the proposed right-of-way of U.S. Route 68, N 4°-04'-00"W, a distance of 275.21 feet to the point of beginning.

Containing 2.572 acres.

The basis for bearings is the center-line of South Main Street being N 4°-04'-00"W, and all other bearings are from angles and distances measured in a field survey by Lee Surveying and Mapping Co., Inc. on March 23, 2005 and May 5, 2006.

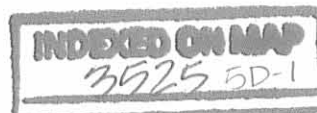


ORIGINAL STAMP IN GREEN

Description prepared by:

Jeffrey I. Lee  
Professional Surveyor 6359  
April 4, 2005  
Revised May 5, 2006

L-1734056

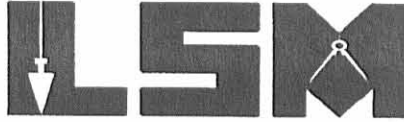


1 RECD 5-11-06 SJM/BL

# Lee Surveying and Mapping Co., Inc.

Land Surveys • Topography • Subdivisions • Construction Layout

117 N. Madriver St.  
Bellefontaine OH 43311



Phone: (937) 593-7335  
Fax: (937) 593-7444

**1975 - 2005 - 30 YEARS OF EXCELLENCE**

**F & S ASSOCIATES  
0.860 ACRE  
CHURCH PARCEL**

Lying in Section 33, Town 4, Range 14, Lake Township, City of Bellefontaine, Logan County Ohio.

Being out of the F & S Associates 5.728 acre tract as deeded and described in Official Record 781, Page 792 and being more particularly described as follows:

Commencing at a MAG nail set at the intersection of center-lines of South Main Street (U.S. Route 68) (60 feet wide), and Kent Drive (60 feet wide).

THENCE, with the center-line of South Main Street, N 4°-04'-00"W, a distance of 730.12 feet to a point.

THENCE, with the south line of the Hillcrest Baptist Church of Bellefontaine, Ohio 2.00 acre tract (Vol. 315, Pg. 93), S 86°-09'-22"E, a distance of 335.30 feet to a 5/8 inch iron rod set at THE TRUE POINT OF BEGINNING, passing a concrete monument found at 30.30 feet and, a 5/8 inch iron rod set at 42.91 feet.

THENCE, with the east line of the said 2.00 acre tract, N 4°-18'-51"E, a distance of 258.63 feet to a 5/8 inch iron rod found.

THENCE, with the south line of the Hillcrest Baptist Church of Bellefontaine, Ohio 1.22 acre tract (O.R. 73, Pg. 67), S 86°-26'-58"E, a distance of 120.71 feet to a 5/8 inch iron rod found.

THENCE, with the west line of the Cross Pointe Condominiums Phase III (Plat Cabinet A, Slide 751-B), S 6°-11'-33"E, a distance of 263.27 feet to a 5/8 inch iron rod set.

THENCE, N 86°-09'-22"W, a distance of 168.71 feet to the point of beginning.

Containing 0.860 acre.

The basis for bearings is the center-line of South Main Street being N 4°-04'-00"W, and all other bearings are from angles and distances measured in a field survey by Lee Surveying and Mapping Co., Inc. on March 23, 2005 and May 5, 2006.

Description prepared by:



ORIGINAL STAMP IN GREEN

A handwritten signature in black ink, appearing to read 'Jeffrey I. Lee'.

Jeffrey I. Lee  
Professional Surveyor 6359  
April 4, 2005  
Revised May 5, 2006

L-1734056



122'D 5-11-06 SWM OK

# Lee Surveying and Mapping Co., Inc.

Land Surveys • Topography • Subdivisions • Construction Layout

117 N. Madriver St.  
Bellefontaine OH 43311



Phone: (937) 593-7335  
Fax: (937) 593-7444

**1975 - 2005 - 30 YEARS OF EXCELLENCE**

**F & S ASSOCIATES  
2.296 ACRE  
PARCEL C**

Lying in Section 33, Town 4, Range 14, Lake Township, City of Bellefontaine, Logan County Ohio.

Being out of the F & S Associates 5.728 acre tract as deeded and described in Official Record 781, Page 792 and being more particularly described as follows:

Beginning at a 5/8 inch iron rod found at the southwest corner of Jado Ville (Plat Cabinet A, Slide 713-A) on the north right-of-way of Kent Drive (60 feet wide).

THENCE, with the north right-of-way of Kent Drive N 86°-12'-00"W, a distance of 35.32 feet to a 5/8 inch iron rod set.

THENCE, with the lines of the F & S Associates 0.581 acre tract (O.R. 781, Pg. 792), the following three courses:

With a curve to the right having a central angle of 33°-47'-42", a radius of 220.00 feet, an arc length 129.76 feet, with a chord bearing N 64°-26'-21"W, a distance of 127.89 feet to a 5/8 inch iron rod set.

N 47°-32'-30"W, a distance of 100.15 feet to a 5/8 inch iron rod set.

With a curve to the left having a central angle of 7°-43'-32", a radius of 280.00 feet, an arc length of 37.75 feet, with a chord bearing N 51°-24'-16"W, a distance of 37.73 feet to a 5/8 inch iron rod set.

THENCE, with the east line of the F & S Associates 1.512 acre tract (O.R. 781, Pg. 783), N 4°-04'-00"W, a distance of 325.00 feet to a railroad spike set.

THENCE, N 85°-56'-00"E, a distance of 224.57 feet to a 5/8 inch iron rod set.

THENCE, with the west line of the Cross Pointe Condominiums Phase III, (Plat Cabinet A, Slide 751-B) and the west line of the Jado Ville (Plat Cabinet A, Slide 713-A), S 6°-11'-33"E, a distance of 491.64 feet to the point of beginning.

Containing 2.296 acres.

The basis for bearings is the center-line of South Main Street being N 4°-04'-00"W, and all other bearings are from angles and distances measured in a field survey by Lee Surveying and Mapping Co., Inc. on March 23, 2005 and May 5, 2006.



ORIGINAL STAMP IN GREEN

Description prepared by:

A handwritten signature in black ink, appearing to read 'Jeffrey I. Lee', written over a light-colored background.

Jeffrey I. Lee  
Professional Surveyor 6359  
April 4, 2005  
Revised May 5, 2006



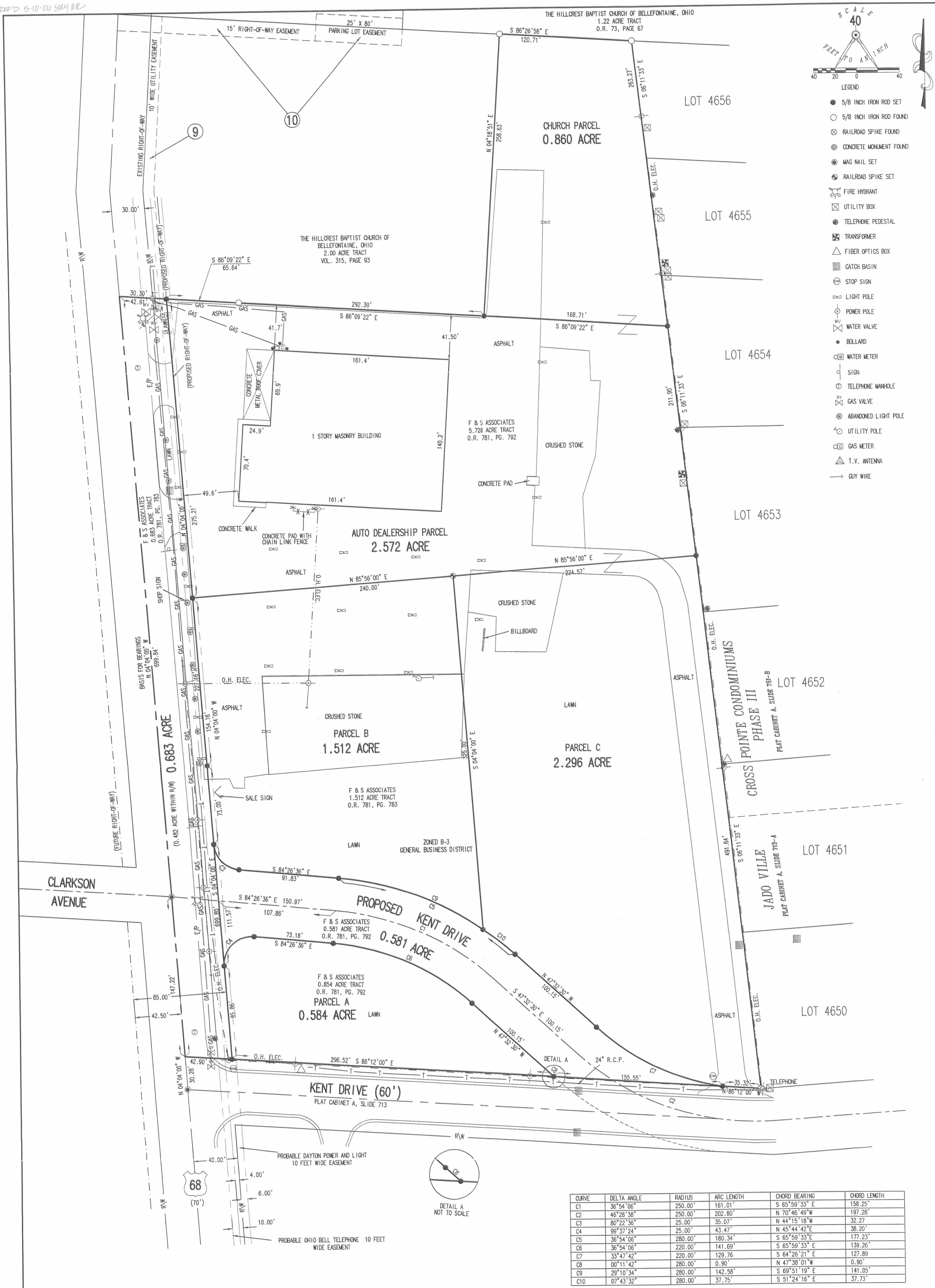
L-1734056

REV'D 5-10-06 SAM RL

SCALE  
40  
FEET TO AN INCH

LEGEND

- 5/8 INCH IRON ROD SET
- 5/8 INCH IRON ROD FOUND
- ⊗ RAILROAD SPIKE FOUND
- ⊙ CONCRETE MONUMENT FOUND
- ⊙ MAG NAIL SET
- ⊙ RAILROAD SPIKE SET
- ⊙ FIRE HYDRANT
- ⊙ UTILITY BOX
- ⊙ TELEPHONE PEDESTAL
- ⊙ TRANSFORMER
- ⊙ FIBER OPTICS BOX
- ⊙ CATCH BASIN
- ⊙ STOP SIGN
- ⊙ LIGHT POLE
- ⊙ POWER POLE
- ⊙ WATER VALVE
- BOLLARD
- ⊙ WATER METER
- ⊙ SIGN
- ⊙ TELEPHONE MANHOLE
- ⊙ GAS VALVE
- ⊙ ABANDONED LIGHT POLE
- ⊙ UTILITY POLE
- ⊙ GAS METER
- ⊙ T.V. ANTENNA
- GUY WIRE



ALL REFERENCED DOCUMENTS ARE FROM LAWYERS TITLE INSURANCE CORPORATION COMMITMENT FOR TITLE INSURANCE. CASE No. 310.846-05 HAVING AN EFFECTIVE DATE OF MARCH 16, 2005 AT 7:00 A.M. OTHER EASEMENTS MAY EXIST. THE SURVEYOR DID NOT SEARCH FOR ADDITIONAL EASEMENTS.

- 9 EASEMENT TO CHARLES E. GRAHAM, OR THE GRAHAM CHEVROLET CADILLAC COMPANY AND THE CITY OF BELLEFONTAINE BY INSTRUMENT FILED OF RECORD MAY 1, 1964 AT 9:25 A.M. IN DEED VOLUME 294, PAGE 648, RECORDER'S OFFICE, LOGAN COUNTY, OHIO.
  - 10 AGREEMENT FOR EASEMENT, RIGHT-OF-WAY AND MAINTENANCE BY INSTRUMENT FILED OF RECORD JANUARY 13, 1989 AT 1:14 P.M. IN OFFICIAL RECORD 78, PAGE 168, RECORDER'S OFFICE, LOGAN COUNTY, OHIO.
- ZONE B-3  
60 FEET MAXIMUM HEIGHT, ACCESSORY BUILDINGS 40 FEET. FRONT SETBACK 25 FEET.  
NO SIDE OR REAR SETBACK EXCEPT WHEN ADJOINING A RESIDENTIAL DISTRICT THEN MINIMUM 25 FEET.
- EASEMENTS FOR GAS AND SANITARY SEWER LINES WERE NOT LOCATED.

FLOOD PANEL #390340 0003C  
EFFECTIVE DATE JULY/16/1964  
PANEL NOT PRINTED - AREA IN ZONE "C" AREA OF MINIMAL FLOODING  
THE PROPERTY IS IN FLOOD ZONE "C"  
PER FEMA MAP INDEX 390340-000

**NOTE:**  
THE UNDERGROUND UTILITIES SHOWN HAVE BEEN LOCATED FROM A FIELD SURVEY OF ABOVE GROUND STRUCTURES AND EXISTING DRAWINGS PROVIDED TO THE SURVEYOR. THE SURVEYOR MAKES NO GUARANTEE THAT THE UNDERGROUND UTILITIES SHOWN ARE IN THE EXACT LOCATION INDICATED. ALTHOUGH, HE DOES STATE THAT THEY ARE LOCATED AS ACCURATELY AS POSSIBLE FROM INFORMATION AVAILABLE. THE SURVEYOR HAS NOT PHYSICALLY LOCATED THE UNDERGROUND UTILITIES. ADDITIONAL BURIED UTILITIES/STRUCTURES MAY BE ENCOUNTERED.

THE PROPOSED LOCATION OF KENT DRIVE WAS PROVIDED BY BELLEFONTAINE CITY ENGINEER, TIMOTHY NOTESTINE P.E., P.S.

A SURVEY OF 3 TRACTS OUT OF THE  
F & S ASSOCIATES  
5.728 ACRE TRACT  
OFFICIAL RECORD 781, PAGE 792  
SECTION 33, TOWN 4, RANGE 14  
CITY OF BELLEFONTAINE  
LAKE TOWNSHIP  
LOGAN COUNTY, OHIO

SURVEYED BY:  
JEFFREY L. LEE  
PROFESSIONAL SURVEYOR 6359  
MARCH 23, 2005  
REVISED MAY 5, 2006 (BOUNDARY, ONLY)



COPYRIGHT 2006 BY:  
LEE SURVEYING & MAPPING CO., INC.  
117 North Madriver Street  
BELLEFONTAINE, OHIO 43311  
(614) 593-7335

WATER  
CITY OF BELLEFONTAINE  
(937)-592-3561

ELECTRIC  
DAYTON POWER AND LIGHT COMPANY  
800-362-2764

PHONE  
SPRINT  
800-786-6572

GAS  
VECTREN  
800-909-7666

COMMUNICATIONS  
QUEST COM  
800-899-7780

O.U.P.S. TICKET NUMBER 0325 010 012  
2 WORKING DAYS  
**BEFORE YOU DIG**  
CALL TOLL FREE 800-362-2764  
OHIO UTILITIES PROTECTION SERVICE.



ADW D0506 1734056 L-1734056