

Graham - Baker Survey Lake Township January 1963 4.00 Acres

The following described land in Lake Township, Logan County, Ohio and being in Section 33 Town 4 Range 14

Beginning at a small iron in the center of U.S.Route Number 68 also known as the Bellefontaine - West Liberty Pike, at the S.W. corner of the Baptist Church 2.00 acre tract. Thence with the south side of said Baptist Church 2.00 acre tract (and with the south side of said Baptist Church tract extended) S 86 - 12 E. 629.95 feet to an iron. The last described line passing a concrete right of way post at the east side of the State Highway at 30.28 feet. (Being 30.00 feet from the center of the State Highway when measured at right angles.)

Thence S. 4 - 04 E. 236.30 feet to an iron.

Thence S. 85 - 56 W. 624.00 feet to a small iron in the center of U.S.Route Number 68. The last described line passing an iron at the east side of the State Highway at 594.00 feet.

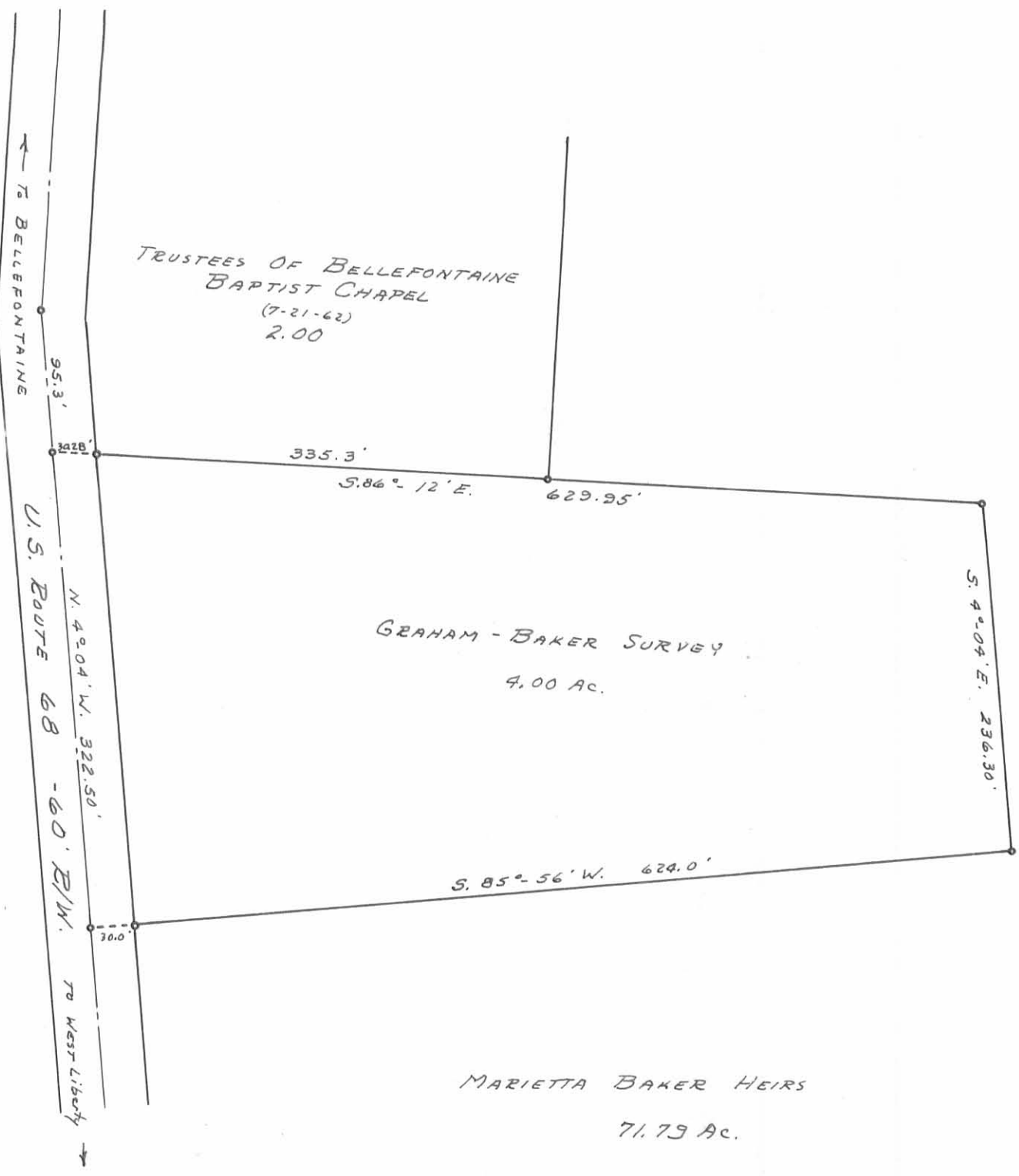
Thence with the center of U.S. Number 68 N. 4 - 04 W. 322.50 feet to the place of beginning.

The above described tract contains 4.00 acres and being off of the west side of a 75.79 acre tract now in the name of Marrietta Baker.

cc
Logan County Engineer



3525 4D



GRAHAM - BAKER SURVEY
 SEC. 33, T. 4, R. - 14
 LAKE TOWNSHIP
 F.F. WRIGHT - JANUARY 1963
 SCALE: 1" = 100'

INDEXED ON MAP
 SURVEY INDEX
 No. 3525

INDEXED ON MAP
 3525 6P

REC'D 6-27-05 SJM/ak

Lee Surveying and Mapping Co., Inc.

Land Surveys • Topography • Subdivisions • Construction Layout

117 N. Madriver St.
Bellefontaine OH 43311



Phone: (937) 593-7335
Fax: (937) 593-7444

1975 - 2005 - 30 YEARS OF EXCELLENCE

**GRAHAM
1.512 ACRE**

Lying in Section 33, Town 4, Range 14, Lake Township, City of Bellefontaine, Logan County Ohio.

Being out of the John C. Graham and Hazel J. Graham, Trustees of the Hazel J. Graham Revocable Trust Dated January 30, 1999, 8.342 acre tract and 0.748 acre tract as deeded and described in Official Record 421, Page 151, Parcels One and Two and being more particularly described as follows:

Beginning at a MAG nail set at the intersection of center-lines of South Main Street (U.S. Route 68) (60 feet wide), and Kent Drive (60 feet wide).

THENCE, with the center-line of South Main Street, N 4°-04'-00"W, a distance of 30.28 feet to a point.

THENCE, with the north right of way of Kent Drive extended, S 86°-12'-00"E, a distance of 42.90 feet to a 5/8 inch iron rod set.

THENCE, N 4°-04'-00"W, a distance of 197.43 feet to a 5/8 inch iron rod set at THE TRUE POINT OF BEGINNING.

THENCE, N 4°-04'-00"W, a distance of 227.16 feet to a 5/8 inch iron rod set.

THENCE, N 85°-56'-00"E, a distance of 240.00 feet to a railroad spike set.

THENCE, S 4°-04'-00"E, a distance of 325.00 feet to a 5/8 inch iron rod set.

THENCE, with a curve to the left having a central angle of 29°-10'-34", a radius of 280.00 feet, an arc length of 142.58 feet, with a chord bearing N 69°-51'-19"W, a distance of 141.05 feet to a 5/8 inch iron rod set.

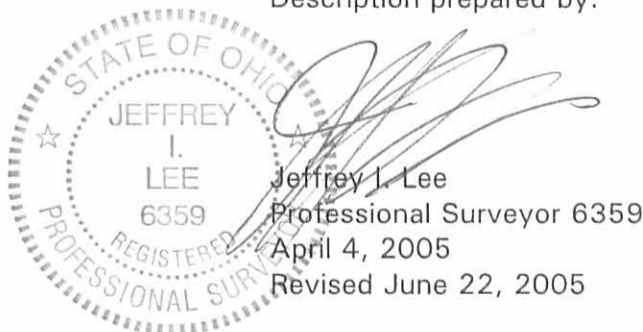
THENCE, N 84°-26'-36"W, a distance of 91.83 feet to a 5/8 inch iron rod set.

THENCE, with a curve to the right having a central angle of 80°-22'-36", a radius of 25.00 feet, an arc length of 35.07 feet, with a chord bearing N 44°-15'-18"W, a distance of 32.27 feet to the point of beginning

Containing 1.512 acre.

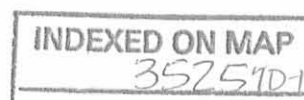
The basis for bearings is the center-line of South Main Street being N 4°-04'-00"W, and all other bearings are from angles and distances measured in a field survey by Lee Surveying and Mapping Co., Inc. on March 23, 2005 and June 22, 2005.

Description prepared by:



ORIGINAL STAMP IN GREEN

L-1734055



REC'D 6-27-05 8M/CLC

Lee Surveying and Mapping Co., Inc.

Land Surveys • Topography • Subdivisions • Construction Layout

117 N. Madriver St.
Bellefontaine OH 43311



Phone: (937) 593-7335
Fax: (937) 593-7444

1975 - 2005 - 30 YEARS OF EXCELLENCE

**GRAHAM
5.728 ACRE**

Lying in Section 33, Town 4, Range 14, Lake Township, City of Bellefontaine, Logan County Ohio.

Being out of the John C. Graham and Hazel J. Graham, Trustees of the Hazel J. Graham Revocable Trust Dated January 30, 1999, 8.342 acre tract and 0.748 acre tract as deeded and described in Official Record 421, Page 151, Parcels One and Two and being more particularly described as follows:

Beginning at a MAG nail set at the intersection of center-lines of South Main Street (U.S. Route 68) (60 feet wide), and Kent Drive (60 feet wide).

THENCE, with the center-line of South Main Street, N 4°-04'-00"W, a distance of 730.12 feet to a point.

THENCE, with the south line of the Hillcrest Baptist Church of Bellefontaine, Ohio 2.00 acre tract (Vol. 315, Pg. 93), S 86°-09'-22"E, a distance of 42.91 feet to a 5/8 inch iron rod set at THE TRUE POINT OF BEGINNING, passing a concrete monument found at 30.30 feet.

THENCE, with the lines of the said 2.00 acre tract the following two courses:

S 86°-09'-22"E, a distance of 292.39 feet to a 5/8 inch iron rod set, passing a 5/8 inch iron rod found at 65.64 feet.

N 4°-18'-51"E, a distance of 258.63 feet to a 5/8 inch iron rod found.

THENCE, with the south line of the Hillcrest Baptist Church of Bellefontaine, Ohio, 1.22 acre tract (O.R. 73, Pg. 67), S 86°-26'-58"E, at a distance of 120.71 feet to a 5/8 inch iron rod found at the northwest corner of Lot 4656 of Jado Ville (Plat Cabinet A, Slide 713-A) also being the northwest corner of Cross Point Condominiums (Plat Cabinet A, Slide 751).

THENCE, with the west line of the said Condominiums and said Jado Ville, S 6°-11'-33"W, a distance of 966.81 feet to a 5/8 inch iron rod found.

THENCE, with the north right-of-way of Kent Drive (60 feet wide), N 86°-12'-00"W, a distance of 35.32 feet to a 5/8 inch iron rod set.

THENCE, with a curve to the right having a central angle of 33°-47'-42", a radius of 220.00 feet, an arc length of 129.76 feet, with a chord bearing N 64°-26'-21"W, a distance of 127.89 feet to a 5/8 inch iron rod set.

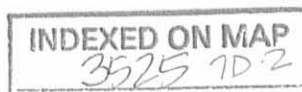
THENCE, N 47°-32'-30"W, a distance of 100.15 feet to a 5/8 inch iron rod set.

THENCE, with a curve to the left having a central angle of 7°-43'-32", a radius of 280.00 feet, an arc length of 37.75 feet, with a chord bearing N 51°-24'-16"W, a distance of 37.73 feet to a 5/8 inch iron rod set.

THENCE, N 4°-04'-00"W, a distance of 325.00 feet to a railroad spike set.

THENCE, S 85°-56'-00"W, a distance of 240.00 feet to a 5/8 inch iron rod set.

THENCE, N 4°-04'-00"W, a distance of 275.21 feet to the point of beginning.



Lee Surveying and Mapping Co., Inc.

Land Surveys • Topography • Subdivisions • Construction Layout

117 N. Madriver St.
Bellefontaine OH 43311



Phone: (937) 593-7335
Fax: (937) 593-7444

1975 - 2005 - 30 YEARS OF EXCELLENCE

Containing 5.728 acre.

The basis for bearings is the center-line of South Main Street being N 4°-04'-00"W, and all other bearings are from angles and distances measured in a field survey by Lee Surveying and Mapping Co., Inc. on March 23, 2005 and June 22, 2005.

Description prepared by:

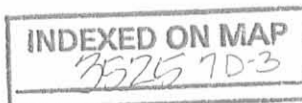


ORIGINAL STAMP IN GREEN

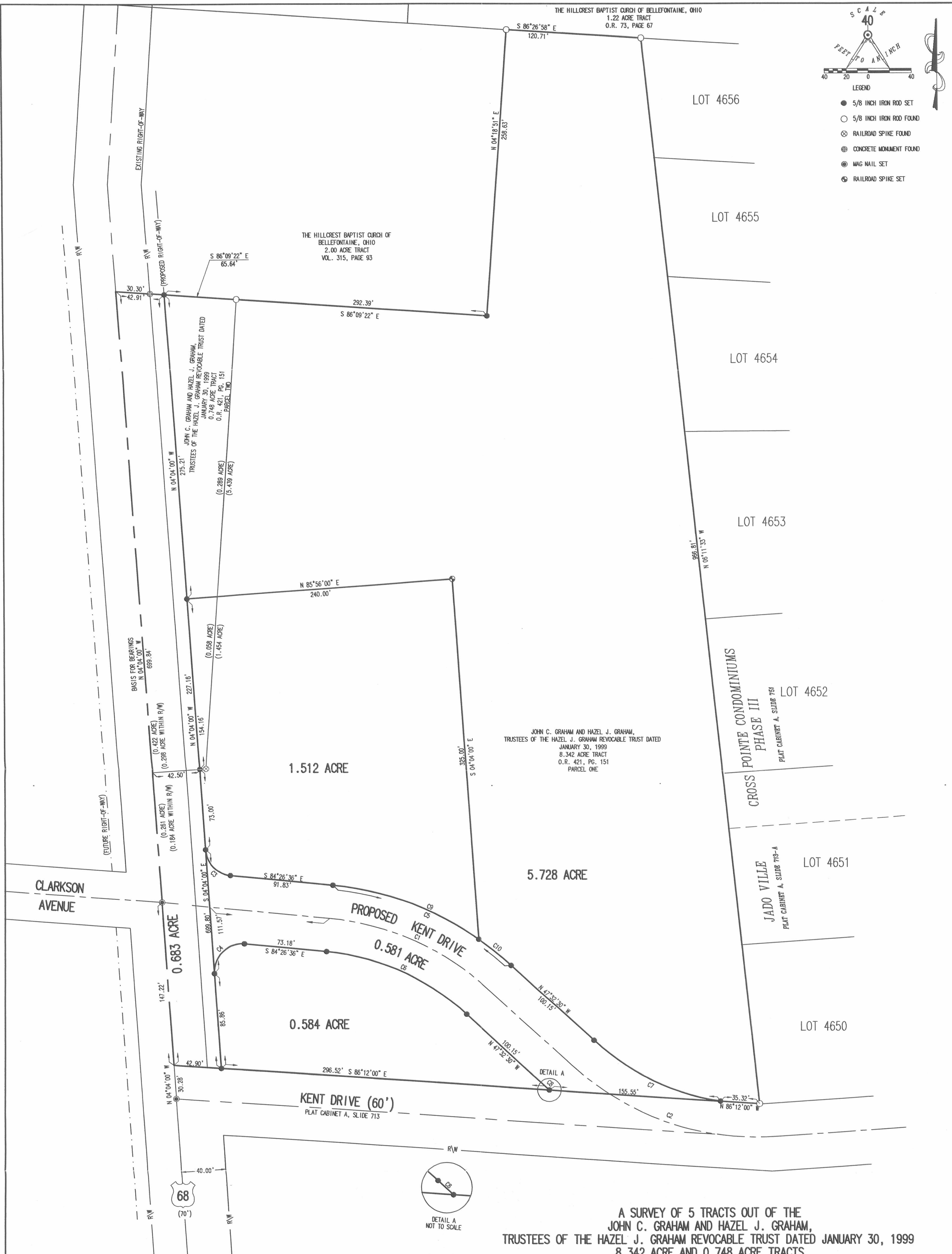
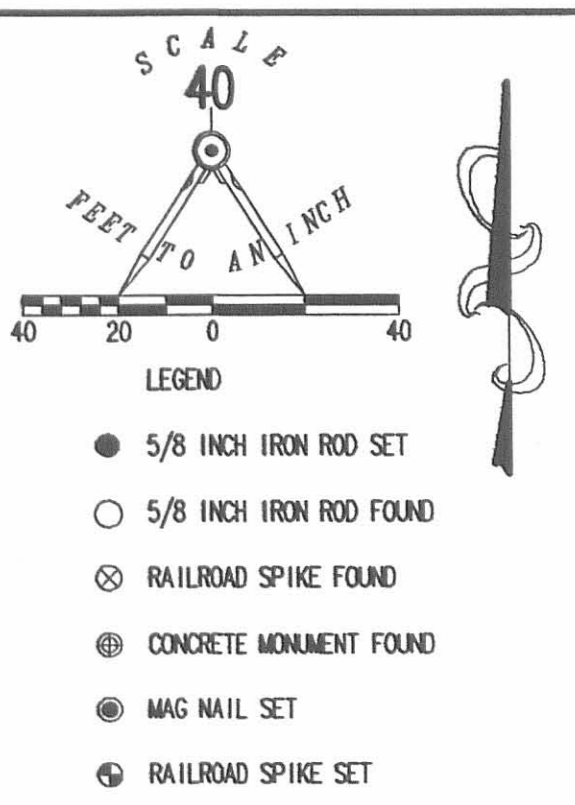
A handwritten signature in black ink, appearing to read 'Jeffrey I. Lee'.

Jeffrey I. Lee
Professional Surveyor 6359
April 4, 2005
Revised June 22, 2005

L-1734055



REC'D 0-27-05 SWM OK



A SURVEY OF 5 TRACTS OUT OF THE JOHN C. GRAHAM AND HAZEL J. GRAHAM, TRUSTEES OF THE HAZEL J. GRAHAM REVOCABLE TRUST DATED JANUARY 30, 1999 8.342 ACRE AND 0.748 ACRE TRACTS OFFICIAL RECORD 421, PAGE 151, PARCEL ONE AND TWO SECTION 33, TOWN 4, RANGE 14 CITY OF BELLEFONTAINE LAKE TOWNSHIP LOGAN COUNTY, OHIO

CURVE	DELTA ANGLE	RADIUS	ARC LENGTH	CHORD BEARING	CHORD LENGTH
C1	36°54'06"	250.00'	161.01'	S 65°59'33" E	158.25'
C2	46°28'38"	250.00'	202.80'	N 70°46'49" W	197.28'
C3	80°22'36"	25.00'	35.07'	N 44°15'18" W	32.27'
C4	99°37'24"	25.00'	43.47'	N 45°44'42" E	38.20'
C5	36°54'06"	280.00'	180.34'	S 65°59'33" E	177.23'
C6	36°54'06"	220.00'	141.69'	S 65°59'33" E	139.26'
C7	33°47'42"	220.00'	129.76'	S 64°26'21" E	127.89'
C8	00°11'42"	280.00'	0.90'	N 47°38'01" W	0.90'
C9	29°10'34"	280.00'	142.58'	S 69°51'19" E	141.05'
C10	07°43'32"	280.00'	37.75'	S 51°24'16" E	37.73'



SURVEYED BY: *Jeffrey J. Lee*
 JEFFREY J. LEE
 PROFESSIONAL SURVEYOR 6359
 MARCH 23, 2005
 REVISED JUNE 22, 2005

THE PROPOSED LOCATION OF KENT DRIVE WAS PROVIDED BY BELLEFONTAINE CITY ENGINEER, P.E., P.S.

INDEXED ON MAP 3525.7P

2 WORKING DAYS BEFORE YOU DIG CALL TOLL FREE 800-362-2764 OHIO UTILITIES PROTECTION SERVICE.

COPYRIGHT 2005 BY: LEE SURVEYING & MAPPING CO., INC. 117 North Medriver Street BELLEFONTAINE, OHIO 43311 (937) 593-7335

ADW D0605 1734055 L-1734055-1

REC'D 4-14-05 4PM OK

Lee Surveying and Mapping Co., Inc.

Land Surveys • Topography • Subdivisions • Construction Layout

117 N. Madriver St.
Bellefontaine OH 43311



Phone: (937) 593-7335
Fax: (937) 593-7444

1975 - 2005 - 30 YEARS OF EXCELLENCE

**GRAHAM
7.240 ACRE**

Lying in Section 33, Town 4, Range 14, Lake Township, City of Bellefontaine, Logan County Ohio.

Being out of the John C. Graham and Hazel J. Graham, Trustees of the Hazel J. Graham Revocable Trust Dated January 30, 1999, 8.342 acre tract and 0.748 acre tract as deeded and described in Official Record 421, Page 151, Parcels One and Two and being more particularly described as follows:

Beginning at a MAG nail set at the intersection of center-lines of South Main Street (U.S. Route 68) (60 feet wide), and Kent Drive (60 feet wide).

THENCE, with the center-line of South Main Street, N 4°-04'-00"W, a distance of 730.12 feet to a point.

THENCE, with the south line of the Hillcrest Baptist Church of Bellefontaine, Ohio 2.00 acre tract (Vol. 315, Pg. 93), S 86°-09'-22"E, a distance of 42.91 feet to a 5/8 inch iron rod set at THE TRUE POINT OF BEGINNING, passing a concrete monument found at 30.30 feet.

THENCE, with the lines of the said 2.00 acre tract the following two courses:

S 86°-09'-22"E, a distance of 292.39 feet to a 5/8 inch iron rod set, passing a 5/8 inch iron rod found at 65.64 feet.

N 4°-18'-51"E, a distance of 258.63 feet to a 5/8 inch iron rod found.

THENCE, with the south line of the Hillcrest Baptist Church of Bellefontaine, Ohio, 1.22 acre tract (O.R. 73, Pg. 67), S 86°-26'-58"E, at a distance of 120.71 feet to a 5/8 inch iron rod found at the northwest corner of Lot 4656 of Jado Ville (Plat Cabinet A, Slide 713-A) also being the northwest corner of Cross Point Condominiums (Plat Cabinet A, Slide 751).

THENCE, with the west line of the said Condominiums and said Jado Ville, S 6°-11'-33"W, a distance of 966.81 feet to a 5/8 inch iron rod found.

THENCE, with the north right-of-way of Kent Drive (60 feet wide), N 86°-12'-00"W, a distance of 35.32 feet to a 5/8 inch iron rod set.

THENCE, with a curve to the right having a central angle of 33°-47'-42", a radius of 220.00 feet, an arc length of 129.76 feet, with a chord bearing N 64°-26'-21"W, a distance of 127.89 feet to a 5/8 inch iron rod set.

THENCE, N 47°-32'-30"W, a distance of 100.15 feet to a 5/8 inch iron rod set.

THENCE, with a curve to the left having a central angle of 36°-54'-06", a radius of 280.00 feet, an arc length of 180.34 feet, with a chord bearing N 65°-59'-33"W, a distance of 177.23 feet to a 5/8 inch iron rod set.

THENCE, N 84°-26'-36"W, a distance of 91.83 feet to a 5/8 inch iron rod set.

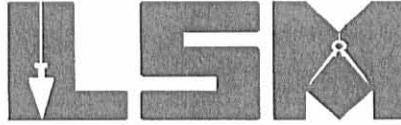
THENCE, with a curve to the right having with a central angle of 80°-22'-36", a radius of 25.00 feet, an arc length of 35.07 feet, with a chord bearing N 44°-15'-18"W, a distance of 32.27 feet to a 5/8 inch iron rod set.

INDEXED ON MAP
3525 8D-1

Lee Surveying and Mapping Co., Inc.

Land Surveys • Topography • Subdivisions • Construction Layout

117 N. Madriver St.
Bellefontaine OH 43311



Phone: (937) 593-7335
Fax: (937) 593-7444

1975 - 2005 - 30 YEARS OF EXCELLENCE

THENCE, with the proposed east right-of-way of South Main Street, N 4°-04'-00"W, a distance of 502.37 feet to the point of beginning, passing a 5/8 inch iron rod set at 73.00 feet.

Containing 7.240 acre.

The basis for bearings is the center-line of South Main Street being N 4°-04'-00"W, and all other bearings are from angles and distances measured in a field survey by Lee Surveying and Mapping Co., Inc. on March 23, 2005.

Description prepared by:



ORIGINAL STAMP IN GREEN

Handwritten signature of Jeffrey I. Lee in black ink.

Jeffrey I. Lee
Professional Surveyor 6359
April 4, 2005

L-1734025

INDEXED ON MAP
3525 0D-2

REC'D 4-14-05 SMY OK
Lee Surveying and Mapping Co., Inc.

Land Surveys • Topography • Subdivisions • Construction Layout

117 N. Madriver St.
Bellefontaine OH 43311



Phone: (937) 593-7335
Fax: (937) 593-7444

1975 - 2005 - 30 YEARS OF EXCELLENCE

**GRAHAM
0.584 ACRE**

Lying in Section 33, Town 4, Range 14, Lake Township, City of Bellefontaine, Logan County Ohio.

Being out of the John C. Graham and Hazel J. Graham, Trustees of the Hazel J. Graham Revocable Trust Dated January 30, 1999, 8.342 acre tract as deeded and described in Official Record 421, Page 151, Parcel One and being more particularly described as follows:

Beginning at a MAG nail set at the intersection of center-lines of South Main Street (U.S. Route 68) (60 feet wide), and Kent Drive (60 feet wide)

THENCE, with the center-line of South Main Street, N 4°-04'-00"W, a distance of 30.28 feet to a point.

THENCE, with the extension of the north right-of-way of Kent Drive and the north right of way of Kent Drive, S 86°-12'-00"E, a distance of 42.90 feet to a 5/8 inch iron rod set at THE TRUE POINT OF BEGINNING.

THENCE, with the proposed east line of South Main Street, which is 42.50 feet at right angles to the center-line of South Main Street, N 4°-04'-00"W, a distance of 85.86 feet to a 5/8 inch iron rod set.

THENCE, with a curve to the right having a central angle of 99°-37'-24", a radius of 25.00 feet, an arc length of 43.47 feet, with a chord bearing N 45°-44'-42"E, a distance of 38.20 feet to a 5/8 inch iron rod set.

THENCE, S 84°-26'-36"E, a distance of 73.18 feet to a 5/8 inch iron rod set.

THENCE, with a curve to the right having a central angle of 36°-54'-06", a radius of 220.00 feet, an arc length of 141.69 feet, with a chord bearing S 65°-59'-33"E, a distance of 139.26 feet to a 5/8 inch iron rod set.

THENCE, S 47°-32'-30"E, a distance of 100.15 feet to a 5/8 inch iron rod set.

THENCE, with a curve to the left having a central angle of 0°-11'-02", a radius of 280.00 feet, an arc length of 0.90 feet, with a chord bearing S 47°-38'-01"E, a distance of 0.90 feet to a 5/8 inch iron rod set.

THENCE, with the north right-of-way of Kent Drive, N 86°-12'-00"W, a distance of 296.52 feet to the point of beginning.

Containing 0.584 acre.

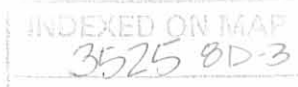
The basis for bearings is the center-line of South Main Street being N 4°-04'-00"W, and all other bearings are from angles and distances measured in a field survey by Lee Surveying and Mapping Co., Inc. on March 23, 2005.

Description prepared by:



A handwritten signature in black ink, appearing to read 'Jeffrey I. Lee'.

Jeffrey I. Lee
Professional Surveyor 6359
April 4, 2005



L-1734025

ORIGINAL STAMP IN GREEN

RECORD 4-14-05 8MM AK
Lee Surveying and Mapping Co., Inc.

Land Surveys • Topography • Subdivisions • Construction Layout

117 N. Madriver St.
Bellefontaine OH 43311



Phone: (937) 593-7335
Fax: (937) 593-7444

1975 - 2005 - 30 YEARS OF EXCELLENCE

**GRAHAM
0.683 ACRE**

Lying in Section 33, Town 4, Range 14, Lake Township, City of Bellefontaine, Logan County Ohio.

Being out of the John C. Graham and Hazel J. Graham, Trustees of the Hazel J. Graham Revocable Trust Dated January 30, 1999, 8.342 acre tract and 0.748 acre tract as deeded and described in Official Record 421, Page 151, Parcels One and Two and being more particularly described as follows:

Beginning at a MAG nail set at the intersection of center-lines of South Main Street (U.S. Route 68) (60 feet wide), and Kent Drive (60 feet wide).

THENCE, with the center-line of South Main Street, N 4°-04'-00"W, a distance of 30.28 feet to a point on the north line of Kent Drive extended at the TRUE POINT OF BEGINNING.

THENCE, with the center-line of South Main Street, N 4°-04'-00"W, a distance of 699.84 feet to a point, passing a MAG nail set at 147.22 feet at the intersection of center-lines of South Main Street and Clarkson Avenue (50 feet wide).

THENCE, with the south line of the Hillcrest Baptist Church of Bellefontaine, Ohio 2.00 acre tract (Vol. 315, Pg. 93), S 86°-09'-22"E, a distance of 42.91 feet to a 5/8 inch iron rod set, passing a concrete monument found at 30.30 feet.

THENCE, with the proposed east line of South Main Street, which is 42.50 feet at right angles to the center-line, S 4°-04'-00"E, a distance of 699.80 feet to a 5/8 inch iron rod set, passing a 5/8 inch iron rods set at 429.37 feet, 502.37 feet and 613.94 feet.

THENCE, with the north right-of-way of Kent Drive and the extension of the north right-of-way of Kent Drive, N 86°-12'-00"W, a distance of 42.90 feet to the point of beginning.

Containing 0.683 acre of which 0.482 acre is within the highway right-of-way. 0.261 acre is out of the 8.342 acre tract, and 0.422 acre out of the 0.748 acre tract.

The basis for bearings is the center-line of South Main Street being N 4°-04'-00"W, and all other bearings are from angles and distances measured in a field survey by Lee Surveying and Mapping Co., Inc. on March 23, 2005.

Description prepared by:



ORIGINAL STAMP IN GREEN

A handwritten signature in black ink, appearing to read 'Jeffrey I. Lee'.
Jeffrey I. Lee
Professional Surveyor 6359
April 4, 2005

L-1734025



Lee Surveying and Mapping Co., Inc.

Land Surveys • Topography • Subdivisions • Construction Layout

117 N. Madriver St.
Bellefontaine OH 43311



Phone: (937) 593-7335
Fax: (937) 593-7444

1975 - 2005 - 30 YEARS OF EXCELLENCE

**GRAHAM
0.581 ACRE**

Lying in Section 33, Town 4, Range 14, Lake Township, City of Bellefontaine, Logan County Ohio.

Being out of the John C. Graham and Hazel J. Graham, Trustees of the Hazel J. Graham Revocable Trust Dated January 30, 1999, 8.342 acre tract as deeded and described in Official Record 421, Page 151, Parcel One and being more particularly described as follows:

Beginning at a MAG nail set at the intersection of center-lines of South Main Street (U.S. Route 68) (60 feet wide), and Kent Drive (60 feet wide).

THENCE, with the center-line of South Main Street, N 4°-04'-00"W, a distance of 30.28 feet to a point on the north line of Kent Drive extended.

THENCE, with the extension of the north right-of-way of Kent Drive and the north right-of-way of Kent Drive, S 86°-12'-00"E, a distance of 42.90 feet to a 5/8 inch iron rod set.

THENCE, N 4°-04'-00"W, a distance of 85.86 feet to a 5/8 inch iron rod set at THE TRUE POINT OF BEGINNING.

THENCE, with the proposed east line of South Main Street, which is 42.50 feet at right angles to the center-line of South Main Street, N 4°-04'-00"W, a distance of 111.57 feet to a 5/8 inch iron rod set.

THENCE, with a curve to the left having a central angle of 80°-22'-36", a radius of 25.00 feet, an arc length of 35.07 feet, with a chord bearing of S 44°-15'-18"E, a distance of 32.27 feet to a 5/8 inch iron rod set.

THENCE, S 84°-26'-36"E, a distance of 91.83 feet to a 5/8 inch iron rod set.

THENCE, with a curve to the right having a central angle of 36°-54'-06", a radius of 280.00 feet, an arc length of 180.34 feet, a chord bearing of S 65°-59'-33"E, a distance of 177.23 feet to a 5/8 inch iron rod set.

THENCE, S 47°-32'-30"E, a distance of 100.15 feet to a 5/8 inch iron rod set.

THENCE, with a curve to the left having a central angle of 33°-47'-42", a radius of 220.00 feet, an arc length of 129.76 feet, with a chord bearing S 64°-26'-21"E, a distance of 127.89 feet to a 5/8 inch iron rod set on the north right-of-way of Kent Drive.

THENCE, with the north right-of-way of Kent Drive, N 86°-12'-00"W, a distance of 155.55 feet to a 5/8 inch iron rod set.

THENCE, with a curve to the right having a central angle of 0°-11'-42", a radius of 280.00 feet, an arc length of 0.90 feet, with a chord bearing of N 47°-38'-01"W, a distance of 0.90 feet to a 5/8 inch iron rod set.

THENCE, N 47°-32'-30"W, a distance of 100.15 feet to a 5/8 inch iron rod set.

THENCE, with a curve to the left having a central angle of 36°-54'-06", a radius of 220.00 feet, an arc length of 141.69 feet, a chord bearing of N 65°-59'-33"W, a distance of 139.26 feet to a 5/8 inch iron rod set.

THENCE, N 84°-26'-36"W, a distance of 73.18 feet to a 5/8 inch iron rod set.

Lee Surveying and Mapping Co., Inc.

Land Surveys • Topography • Subdivisions • Construction Layout

117 N. Madriver St.
Bellefontaine OH 43311



Phone: (937) 593-7335
Fax: (937) 593-7444

1975 - 2005 - 30 YEARS OF EXCELLENCE

THENCE, with a curve to the left having a central angle of $99^{\circ}-37'-24''$, a radius of 25.00 feet, an arc length of 43.47 feet, a chord bearing of $S\ 45^{\circ}-44'-42''W$, a distance of 38.20 feet to the point of beginning.

Containing 0.581 acre.

The basis for bearings is the center-line of South Main Street being $N\ 4^{\circ}-04'-00''W$, and all other bearings are from angles and distances measured in a field survey by Lee Surveying and Mapping Co., Inc. on March 23, 2005.

Description prepared by:

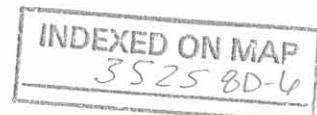


ORIGINAL STAMP IN GREEN

A handwritten signature in black ink, appearing to read 'Jeffrey I. Lee', written over the typed name and title.

Jeffrey I. Lee
Professional Surveyor 6359
April 4, 2005
Revised July 13, 2005

L-1734025

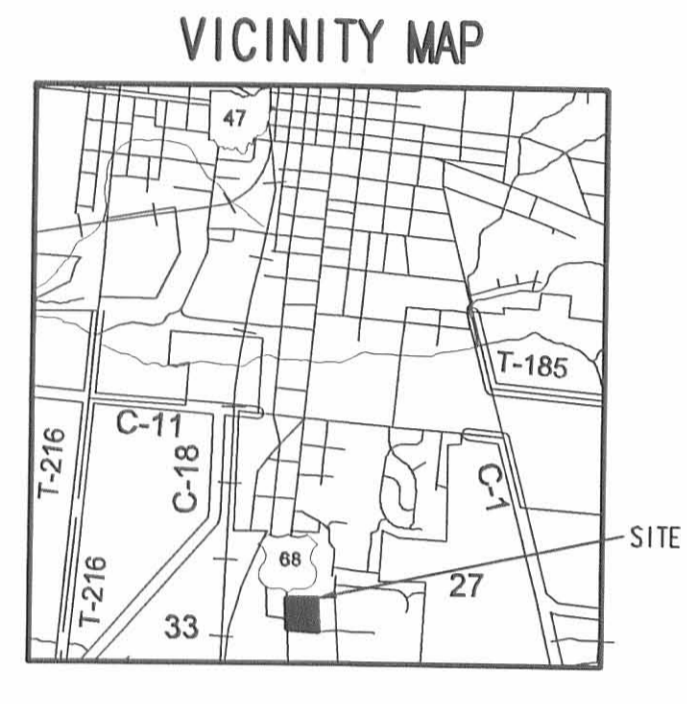
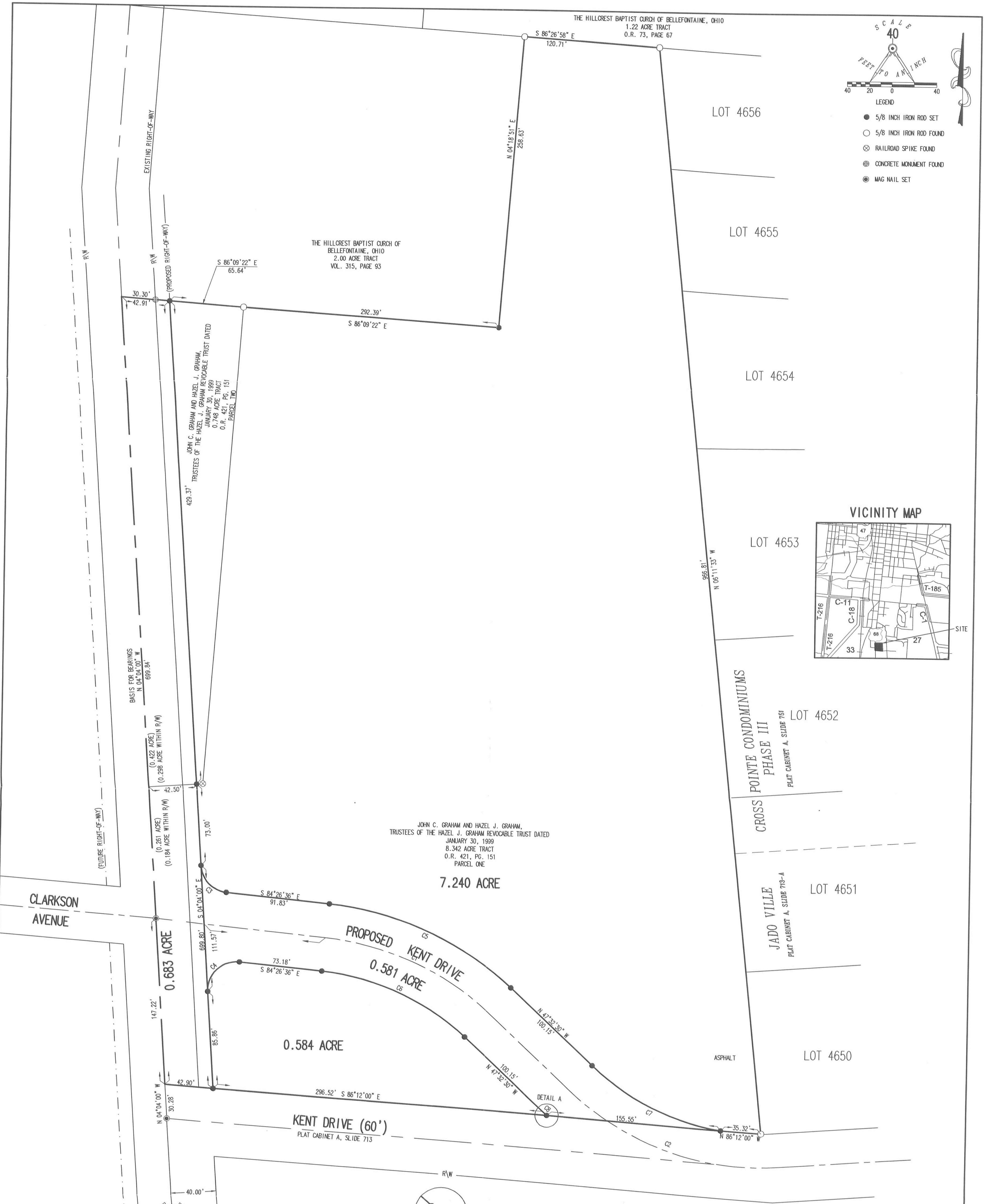


4-12-05 8M/EL

SCALE
40
FEET TO 1 INCH

LEGEND

- 5/8 INCH IRON ROD SET
- 5/8 INCH IRON ROD FOUND
- ⊗ RAILROAD SPIKE FOUND
- ⊕ CONCRETE MONUMENT FOUND
- ⊙ MAG NAIL SET



CURVE	DELTA ANGLE	RADIUS	ARC LENGTH	CHORD BEARING	CHORD LENGTH
C1	36°54'06"	250.00'	161.01'	S 65°59'33" E	158.25'
C2	46°28'38"	250.00'	202.80'	N 70°46'49" W	197.28'
C3	80°22'36"	25.00'	35.07'	N 44°15'18" W	32.27'
C4	99°37'24"	25.00'	43.47'	N 45°44'42" E	38.20'
C5	36°54'06"	280.00'	180.34'	S 65°59'33" E	177.23'
C6	36°54'06"	220.00'	141.69'	S 65°59'33" E	139.26'
C7	33°47'42"	220.00'	129.76'	S 64°26'21" E	127.89'
C8	00°11'42"	280.00'	0.90'	N 47°38'01" W	0.90'

A SURVEY OF 4 TRACTS OUT OF THE
JOHN C. GRAHAM AND HAZEL J. GRAHAM,
TRUSTEES OF THE HAZEL J. GRAHAM REVOCABLE TRUST DATED JANUARY 30, 1999
8.342 ACRE AND 0.748 ACRE TRACTS
OFFICIAL RECORD 421, PAGE 151, PARCEL ONE AND TWO
SECTION 33, TOWN 4, RANGE 14
CITY OF BELLEFONTAINE
LAKE TOWNSHIP
LOGAN COUNTY, OHIO



SURVEYED BY:
JEFFREY I. LEE
PROFESSIONAL SURVEYOR 6359
MARCH 23, 2005

THE PROPOSED LOCATION OF KENT DRIVE WAS PROVIDED BY
BELLEFONTAINE CITY ENGINEER, P.E., P.S.

COPYRIGHT 2005 BY:
LEE SURVEYING & MAPPING CO., INC.
117 North Madriver Street
BELLEFONTAINE, OHIO 45311
(937) 593-7335

2 WORKING DAYS
BEFORE YOU DIG
CALL TOLL FREE 800-362-2764
OHIO UTILITIES PROTECTION SERVICE

INDEXED ON MAP
3525 8P

ADW 00305 1734025 L-1734025-1

Additional Right-of-Way Description

Situated in the State of Ohio, County of Logan, Township of Lake and in the City of Bellefontaine, being part of Section 33, Town 4, Range 14 and being a portion of the 0.584 acre tract belonging to F. & S. Associates LLC as is described in O. R. Vol. 885, Page 964 Tract Five and more particularly described as follows:

Beginning at a 5/8 inch iron rod found in the north right-of-way of Kent Drive at the common southeast corner of said 0.584 acre tract and a southwest corner of a 0.581 acre tract also in the name of F. & S. Associates LLC as is also described in O. R. Vol. 885, Page 964 Tract Four, said iron rod being located S.86°-12'-00"E. (this bearing is assumed and all other bearings and distances are as were measured in the field) 339.42 feet along the north right-of-way of Kent Drive projected from a point in the centerline of South Main Street (U.S.R. 68).

Thence with said north right-of-way line of Kent Drive N.86°-12'-00"W. 59.86 feet to a 5/8 inch iron bar set,

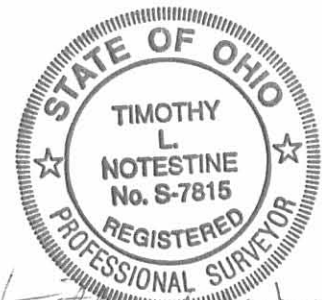
Thence across said 0.584 acre tract N.42°-27'-30"E. 37.39 feet to a 5/8 inch iron rod set in the south line of said 0.581 acre tract,

Thence with the south line of said 0.581 acre tract, S.47°-32'-30"E. 45.84 feet to a 5/8 inch iron rod found,

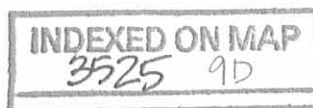
Thence continuing with said south line and with a curve to the left having a central angle of 0°-11'-42" a radius of 280.00 feet, an arc length of 0.90 feet and a chord bearing S.47°-38'-01"E. a distance of 0.90 feet to the place of beginning.

Containing 0.020 acres more or less.

This description prepared by Timothy L. Notestine, P.E., P.S. #S-7815 in December, 2007 based on a field survey on December 7, 2007.



Handwritten signature of Timothy L. Notestine



REC'D 12-19-07 SMJ/OK

ADDITIONAL RIGHT OF WAY PARCEL
SECTION 33, TOWN 4, RANGE 14
CITY OF BELLEFONTAINE
LAKE TOWNSHIP
LOGAN COUNTY, OHIO

F & S Associates, LLC
0.581 Acre Tract
O.R. 885, PG. 964
Tract Four

F & S Associates, LLC
0.584 Acre Tract
O.R. 885, PG. 964
Tract Five

S. MAIN STREET - USR 68

PROPOSED KENT DRIVE (60')

(339.42')

N42° 27' 30"E
37.39'

59.86'
N86° 12' 00"W

S47° 32' 30"E
45.84'

(0.020 ACRES)

SEE DETAIL

POB

KENT DRIVE (60')

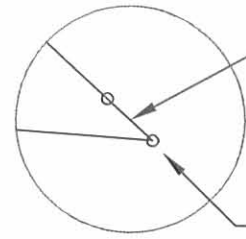


LEGEND

- 5/8" IRON ROD FOUND
- 5/8" IRON ROD SET



SCALE: 1" = 20'



DA = 00°11'42"
 RAD = 280.00'
 ARC LENGTH = 0.90'
 CH BEARING = S 47°38'01"E
 CH LENGTH = 0.90'

NOT TO SCALE

POB

Timothy L. Notestine
 TIMOTHY L. NOTESTINE P.E., P.S. #S-7815
 135 N. DETROIT ST.
 BELLEFONTAINE, OHIO 43311
 SURVEY DATE: 12/7/07

INDEXED ON MAP
 35225 9P



APPROVED

5-10-16

Lee Surveying and Mapping Co., Inc.

Land Surveys • Topography • Subdivisions • Construction Layout

117 N. Madriver St.
Bellefontaine OH 43311



Phone: (937) 593-7335
Fax: (937) 593-7444
surveys@lsminc.us

OHIO LAND HOLDING COMPANY 0.774 ACRE

Lying in Section 33, Town 4, Range 14, City of Bellefontaine, Lake Township, Logan County, Ohio.

Being out of the Ohio Land Holding Company 0.584 acre tract as deeded and described in Official Record 913, Page 192, Vacated Kent Drive deeded and described in Official Record 1065, Page 340 and Ohio Land Holding Company 0.097 acre tract as deeded and described in Official Record 1205, Page 47 of the Logan County Records of Deeds and being more particularly described as follows:

Commencing at a MAG nail set at the intersection of center-lines of Clarkson Avenue, South Main Street (U.S. Route 68)(70 feet wide) and Kent Drive (60 feet wide).

THENCE, with the center-line of Kent Drive, S 84°-26'-36"E, a distance of 77.79 feet to a point.

THENCE, S 05°-33'-24"W, a distance of 30.00 feet to a 5/8 inch iron rod found at the TRUE POINT OF BEGINNING.

THENCE, with the right-of-way of Kent Drive the following three courses:

S 84°-26'-36"E, a distance of 73.05 feet to a 5/8 inch iron rod found.

With a curve to the right, having a central angle of 36°-54'-06", a radius of 220.00 feet, an arc length of 141.69 feet, a chord bearing of S 65°-59'-33"E, a distance of 139.26 feet to a 5/8 inch iron rod found.

S 47°-32'-30"E, a distance of 41.31 feet to a 5/8 inch iron rod found.

THENCE, with the City of Bellefontaine 0.028 acre tract (O.R. 966, Pg. 97, Parcel 43A-WD1), the following two courses:

S 17°-04'-38"W, a distance of 25.74 feet to a 5/8 inch iron rod found.

S 64°-33'-41"W, a distance of 24.81 feet to a 5/8 inch iron rod found.

THENCE, with the right-of-way of Kent Drive the following three courses:

S 76°-48'-41"W, a distance of 50.49 feet to a 5/8 inch iron rod found.

S 57°-49'-10"W, a distance of 26.02 feet to a 5/8 inch iron rod found.

Lee Surveying and Mapping Co., Inc.

Land Surveys • Topography • Subdivisions • Construction Layout

117 N. Madriver St.
Bellefontaine OH 43311



Phone: (937) 593-7335
Fax: (937) 593-7444
surveys@lsmcinc.us

S 24°-17'-35"W, a distance of 32.00 feet to a 5/8 inch iron rod found.

THENCE, with the north line of the Tractor Supply Company 4.679 acre tract (O.R. 562, Pg. 784), N 86°-17'-53"W, a distance of 133.33 feet to a 5/8 inch iron rod found.

THENCE, with the east right-of-way of South Main Street, N 04°-04'-00"W, a distance of 146.52 feet to a point, referenced by a 5/8 inch iron rod found that bears S 28°-20'-46"W, a distance of 0.23 feet.

THENCE, with the east lines of the City of Bellefontaine 0.003 acre tract (O.R. 966, Pg. 97, Parcel 43A-WD), the following two courses:

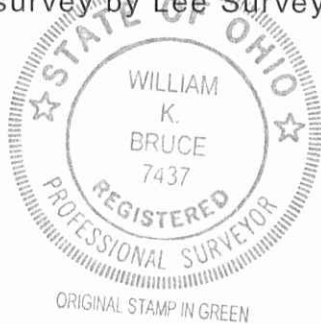
N 32°-29'-35"E, a distance of 25.00 feet to a 5/8 inch iron rod found.

N 68°-12'-21"E, a distance of 15.00 feet to the point of beginning.

Containing 0.774 acre.

Property is subject to any and all previous easements and rights-of-way of record.

The basis for bearings is the east right-of-way of South Main Street, being N 04°-04'-00"W, and all other bearings are from angles and distances measured in a field survey by Lee Surveying and Mapping Co., Inc. on April 25, 2016.



Description prepared by:

A handwritten signature in black ink that reads 'William K. Bruce'.

William K. Bruce
Professional Surveyor 7437
April 25, 2016

L-17341215

INDEXED ON MAP
3525 105-2



APPROVED

5-10-16

Lee Surveying and Mapping Co., Inc.

Land Surveys • Topography • Subdivisions • Construction Layout

117 N. Madriver St.
Bellefontaine OH 43311



Phone: (937) 593-7335
Fax: (937) 593-7444
surveys@lsminc.us

F & S ASSOCIATES, LLC 3.513 ACRES

Lying in Section 33, Town 4, Range 14, City of Bellefontaine, Lake Township, Logan County, Ohio.

Being out of the remainder of the F & S Associates, LLC 1.512 acre and 5.728 acre tract as deeded and described in Official Record 885, Page 964, Tracts One and Three, of the Logan County Records of Deeds and being more particularly described as follows:

Beginning at a 5/8 inch iron rod found at the southwest corner of Lot 4650 of Jado Ville (Plat Cabinet A, Slide 713-A) on the north right-of-way of Kent Drive (60 feet wide).

THENCE, with the north right-of-way of Kent Drive the following six courses:

N 86°-12'-00"W, a distance of 35.32 feet to a MAG nail set.

With a curve to the right, having a central angle of 33°-47'-42", a radius of 220.00 feet, an arc length of 129.76 feet, chord bearing N 64°-26'-21"W, a distance of 127.89 feet to a 5/8 inch iron rod set.

N 47°-32'-30"W, a distance of 100.15 feet to a 5/8 inch iron rod set.

With a curve to the left having a central angle of 36°-54'-04", a radius of 280.00 feet, an arc length of 180.34 feet, a chord bearing N 65°-59'-34"W, a distance of 177.24 feet to a 5/8 inch iron rod set, passing a 5/8 inch iron rod set at a distance of 37.75 feet arc distance.

N 84°-26'-36"W, a distance of 91.83 feet to a 5/8 inch iron rod set.

With a curve to the right, having a central angle of 80°-22'-36", a radius of 25.00 feet, an arc length of 35.07 feet, a chord bearing of N 44°-15'-18"W, a distance of 32.27 feet to a 5/8 inch iron rod set.

THENCE, with the east right-of-way of South Main Street (U.S. Route 68) (70 feet wide), N 04°-04'-00"W, a distance of 132.65 feet to a point, referenced by a 5/8 inch iron rod found that bears S 39°-31'-28"W, a distance of 0.34 feet.

THENCE, with the lines of the O'Reilly Auto Enterprises, LLC 0.665 acre tract (O.R. 144, Pg. 915) the following two courses:

S 86°-03'-26"E, a distance of 199.56 feet to a 5/8 inch iron rod found.

MEMBER: NATIONAL SOCIETY OF PROFESSIONAL SURVEYORS (NSPS)
PROFESSIONAL LAND SURVEYORS OF OHIO (PLSO)

INDEXED ON MAP
3525 100-3

Lee Surveying and Mapping Co., Inc.

Land Surveys • Topography • Subdivisions • Construction Layout

117 N. Madriver St.
Bellefontaine OH 43311



Phone: (937) 593-7335
Fax: (937) 593-7444
surveys@lsminc.us

N 06°-04'-34"W, a distance of 149.61 feet to a MAG nail set.

THENCE, with the south line of the Buck & Buck Enterprises LLC 3.062 acre tract (O.R. 928, Pg. 445), the following three courses:

S 86°-08'-19"E, a distance of 67.04 feet to a railroad spike set.

N 54°-47'-09"E, a distance of 31.73 feet to a railroad spike set.

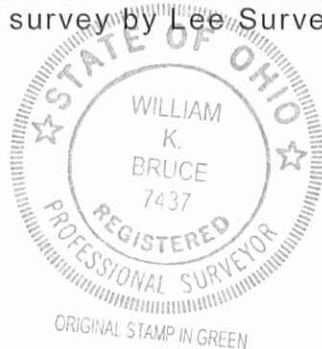
N 85°-56'-00"E, a distance of 177.38 feet to a 5/8 inch iron rod set.

THENCE, with the west lines of Cross Pointe Condominiums Phase III (Plat Cabinet A, Slide 751-B) and the west lines of the Joshua B. Kotsaris part of Lot 4651 and Lot 4650 of Jado Ville (Plat Cabinet A, Slide 713-A)(O.R. 800, Pg. 871) S06°-11'-33"E, a distance of 526.03 feet to the point of beginning.

Containing 3.513 acres.

Property is subject to any and all previous easements and rights-of-way of record.

The basis for bearings is the east right-of-way of South Main Street, being N 04°-04'-00"W, and all other bearings are from angles and distances measured in a field survey by Lee Surveying and Mapping Co., Inc. on April 25, 2016.



Description prepared by:

William K. Bruce
Professional Surveyor 7437
April 25, 2016

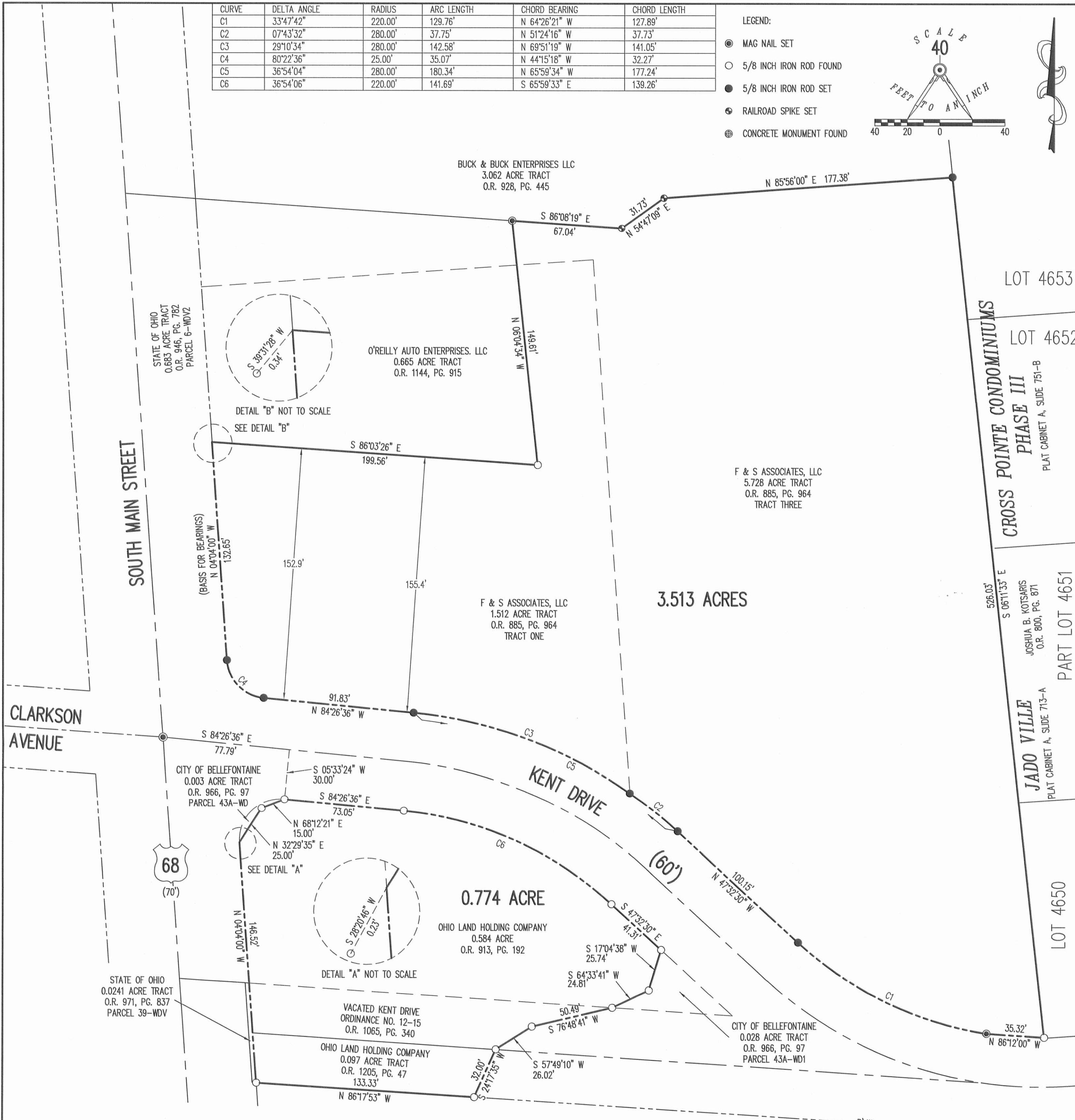
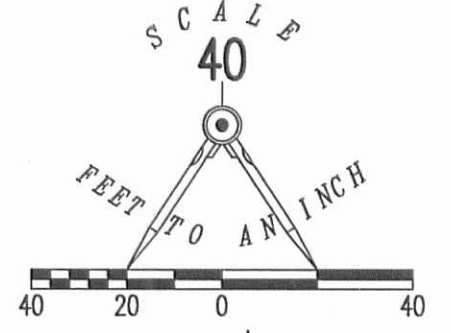
L-17341215

INDEXED ON MAP
3525 10D-4

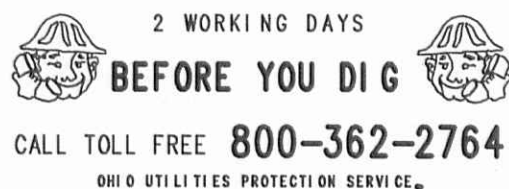
CURVE	DELTA ANGLE	RADIUS	ARC LENGTH	CHORD BEARING	CHORD LENGTH
C1	33°47'42"	220.00'	129.76'	N 64°26'21" W	127.89'
C2	07°43'32"	280.00'	37.75'	N 51°24'16" W	37.73'
C3	29°10'34"	280.00'	142.58'	N 69°51'19" W	141.05'
C4	80°22'36"	25.00'	35.07'	N 44°15'18" W	32.27'
C5	36°54'04"	280.00'	180.34'	N 65°59'34" W	177.24'
C6	36°54'06"	220.00'	141.69'	S 65°59'33" E	139.26'

LEGEND:

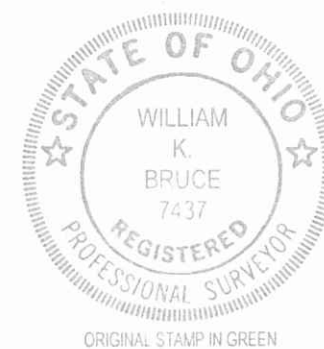
- MAG NAIL SET
- 5/8 INCH IRON ROD FOUND
- 5/8 INCH IRON ROD SET
- ⊕ RAILROAD SPIKE SET
- ⊕ CONCRETE MONUMENT FOUND



A SURVEY OF A 0.774 ACRE TRACT OUT OF OHIO LAND HOLDING COMPANY 0.584 ACRE TRACT OFFICIAL RECORD 913, PAGE 192 VACATED KENT DRIVE AND OHIO LAND HOLDING COMPANY 0.097 ACRE TRACT OFFICIAL RECORD 1205, PAGE 47 AND A 3.513 ACRE TRACT OUT OF F & S ASSOCIATES, LLC 5.728 ACRE TRACT AND 1.512 ACRE TRACT OFFICIAL RECORD 885, PAGE 964 TRACT ONE AND TRACT THREE SECTION 33, TOWN 4, RANGE 14 CITY OF BELLEFONTAINE LAKE TOWNSHIP LOGAN COUNTY, OHIO



THIS SURVEY WAS PREPARED IN THE ABSENCE OF A COMPLETE AND ACCURATE TITLE SEARCH AND DOES NOT GUARANTEE TITLE.



INDEXED ON MAP 3525 10P

SURVEYED BY:

WILLIAM K. BRUCE
PROFESSIONAL SURVEYOR 7437
APRIL 25, 2016

COPYRIGHT 2016 BY:
LEE SURVEYING & MAPPING CO
117 North Madriver Street, INC.
BELLEFONTAINE, OHIO 43311
(937) 593-7335
WWW.LSMINC.US
surveys@lsminc.us
ADW D1215 17341215 L-1734-2

4-27-2020



Metes and Bounds Description for Surveyed Parcel:

Situated in the City of Bellefontaine, Township of Lake, County of Logan and State of Ohio: Known as being a part of Section 33, Township 4 East, Range 14 North. Also known as being a part of the 1.512 acre parcel of land and 5.728 acre parcel of land now or formerly conveyed to F&S Associates, LLC as recorded in Official Record Volume 885, Page 964 Tracts One and Three of Logan County Records and being more particularly described as follows:

Commencing at a "MAG" Nail found at the centerline intersection of Kent Drive and South Main Street (a.k.a. U.S. Route 68, 85' R/W.); thence along said centerline of South Main Street North 02°26'56" West 44.34 feet to a point; thence North 87°32'55" East 42.50 feet to a 3/4" rebar with a 2" diameter Aluminum Cap ODOT Monument marked R/W, found on the East Right-of-Way Line of said South Main Street; thence along said East Right-of-Way line of South Main Street North 02°27'13" West 132.65 feet to a 3/4" rebar with a 2" diameter Aluminum Cap ODOT Monument marked R/W, found at the Southwest corner of a 0.665 acre parcel of land, now or formerly conveyed in the name of O'Reilly Auto Enterprises, LLC, as per Official Record Volume 1144, Page 915 of Logan County Records; thence along the South line of said O'Reilly parcel South 84°26'31" East 199.56 feet to a 5/8" rebar x 30" in length with Plastic Cap Stamped "NORTHROP OH PLS 8199" set at the Southeast corner of said O'Reilly parcel and being the Point of Beginning;

thence along the East line of said O'Reilly parcel North 04°27'39" West 149.61 feet to a 5/8" rebar x 30" in length with Plastic Cap Stamped "NORTHROP OH PLS 8199" set at the Northeast corner thereof and the South line of a 3.062 acre parcel of land, now or formerly conveyed to Buck & Buck Enterprises LLC as per Official Record Volume 928, page 445 of Logan County Records;

thence South 84°31'24" East 67.04 feet along the South line of said Buck & Buck parcel to a railroad spike found;

thence, crossing through said F&S Associates, LLC 5.728 acre parcel of land, South 04°38'52" West 147.44 feet to a 5/8" rebar x 30" in length with Plastic Cap Stamped "NORTHROP OH PLS 8199" set;

thence along the North line of a 0.896 acre parcel of land conveyed to Bellchip, LLC in official Record Volume 1348, page 46, North 84°26'31" West 43.35 feet to the Point of Beginning, containing 0.187 acres (8135 Sq. Feet), more or less, as surveyed by Edward E. Northrop, Ohio Professional Surveyor No. S-8199, for and on behalf of Titan USA Commercial Real Estate Services, LLC under Project No. 350, and is subject to all legal highways, easements and restrictions of record. 0.128 acre is all of the remainder of the 1.512 acre parcel of land and 0.059 acre is part of the 5.728 acre parcel of Land.

The Basis of Bearings for all bearings described herein is the Ohio State Plane Coordinate System (FIPS Zone3401), on the North American Datum of 1983 (2011). GPS observations were used to establish a bearing of South 84°31'24" East, as the North line of the subject property.

Edward E. Northrop

Digitally signed by
Edward E Northrop
Date: 2020.04.27
11:57:20 -04'00'



Edward E. Northrop
Ohio Registered Professional Land Surveyor No. S-8199
Date: February 17, 2020
Revised: April 17, 2020



O'Reilly Automotive Stores, Inc.

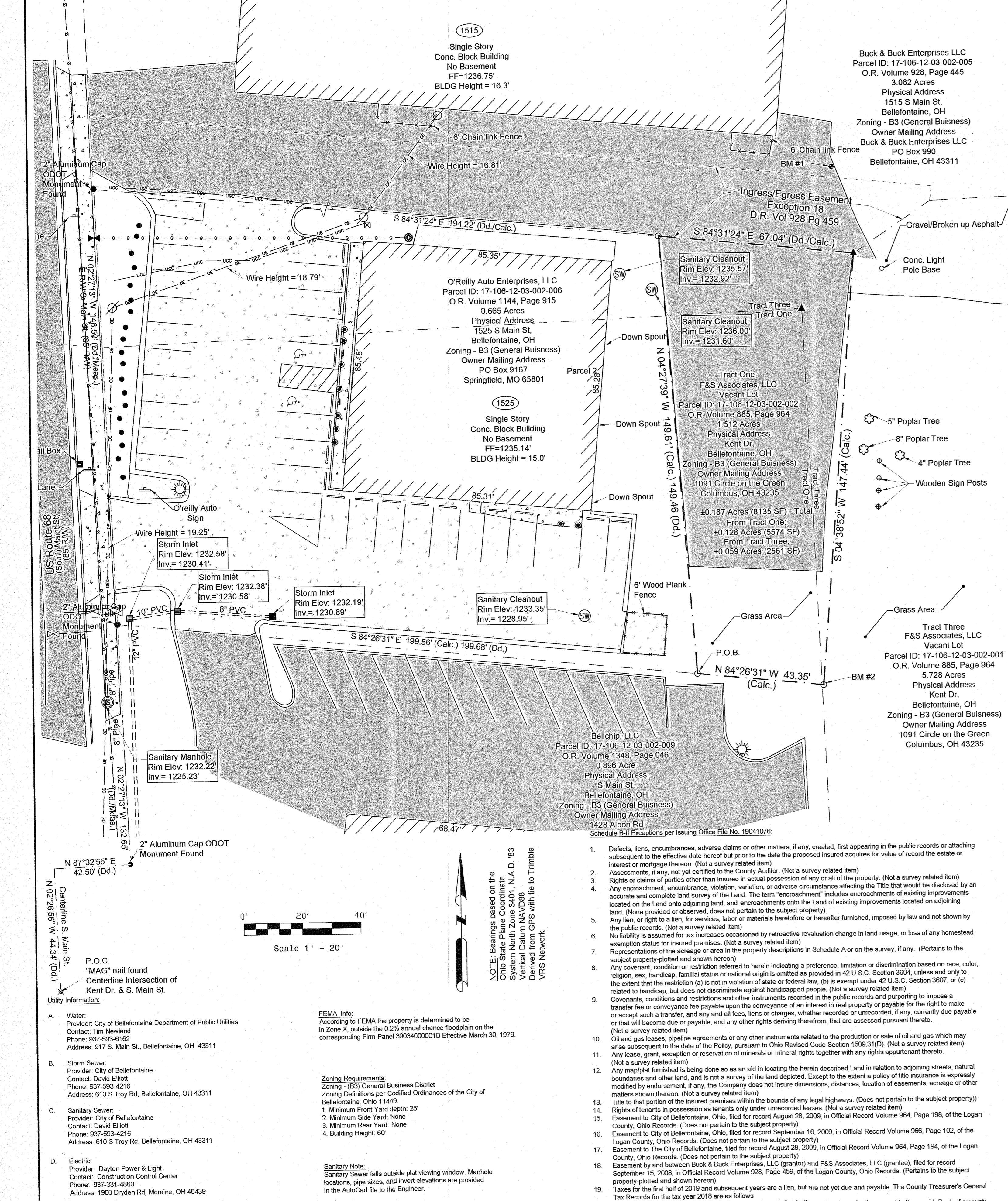
Corporate office:
233 South Patterson, Springfield, Mo 65802
Phone : (417) 862-2674 Fax: (417) 874-7119



306 North Market Street
Mt. Carmel, Illinois 62863
Phone: (618) 263-4100

www.neikirkengineering.com

ALTA/NSPS Part of Section 33, Township 4 East, Range 14 North, Lake Township, in the City of Bellefontaine, Logan County, OH



VICINITY MAP, LEGEND, REVISIONS DATE, Notes, and various descriptive text sections including: Parent Property Recorded Boundary Description, Bearings based on English Ground Coordinates, and detailed descriptions of parcels and easements.

- A. Water: Provider: City of Bellefontaine Department of Public Utilities...
B. Storm Sewer: Provider: City of Bellefontaine...
C. Sanitary Sewer: Provider: City of Bellefontaine...
D. Electric: Provider: Dayton Power & Light...

NOTE: Bearings based on the Ohio State Plane Coordinate System...
Scale 1" = 20'
Sanitary Sewer falls outside plot viewing window...

- 1. Defects, liens, encumbrances, adverse claims or other matters, if any, created, first appearing in the public records...
2. Assessments, if any, not yet certified to the County Auditor...
3. Rights or claims of parties other than insured in actual possession of any or all of the property...



Vertical text and graphics on the right margin including: 'Existing Conditions Survey', 'Bellefontaine', 'Logan County, Ohio', 'O'Reilly Auto Enterprises, LLC', '1525 S Main St, Bellefontaine, OH', 'DWG DATE: 02/17/2020', 'SHEET #: 1 OF 1 SHEETS', and 'INDEXED ON MAP 2020'.