

REC'D 10-23-08 SMY ok

Lee Surveying and Mapping Co., Inc.

Land Surveys • Topography • Subdivisions • Construction Layout

117 N. Madriver St.
Bellefontaine OH 43311



Phone: (937) 593-7335
Fax: (937) 593-7444

F & S ASSOCIATES, LLC 0.733 ACRE

Lying in Section 33, Town 4, Range 14, City of Bellefontaine, Lake Township, Logan County, Ohio.

Being out of the F & S Associates, LLC, 1.512 acre tract as deeded and described in Official Record 885, Page 964, Tract One of the Logan County Records of Deeds and being more particularly described as follows:

Commencing on a MAG nail found on the intersection of center-lines of Clarkson Avenue and South Main Street.

THENCE, with the center-line of South Main Street (80 feet wide), N 04°-04'-00"W, a distance of 331.42 feet to a point.

THENCE, with the south line of the Buck & Buck Enterprises LLC 3.062 acre tract (O.R. 928, Pg. 445) extended, S 86°-08'-18"E, a distance of 42.91 feet to a 5/8 inch iron rod found on the east right-of-way of South Main Street and the east line of The City of Bellefontaine, Ohio, 0.683 acre tract (O.R. 900, Pg. 315).

THENCE, with the east right-of-way of South Main Street and the 0.683 acre tract, S 04°-04'-00"E, a distance of 148.50 feet to a MAG nail set at the TRUE POINT OF BEGINNING, passing a 5/8 inch iron rod found at 53.99 feet.

THENCE, S 86°-08'-17"E, a distance of 199.81 feet to a 5/8 inch iron rod set.

THENCE, S 06°-11'-33"E, a distance of 178.77 feet to a 5/8 inch iron rod set.

THENCE, with the north lines of the F & S Associates, LLC 0.581 acre tract (O.R. 885, Pg. 964, Tract Four), the following three courses:

With a curve to the left, having a central angle of 20°-22'-19", a radius of 280.00 feet, an arc distance of 99.56 feet, a chord bearing N 74°-15'-26"W, a distance of 99.03 feet to a 5/8 inch iron rod found.

N 84°-26'-36"W, a distance of 91.83 feet to a 5/8 inch iron rod found.

With a curve to the right, having a central angle of 80°-22'-36", a radius of 25.00 feet, an arc length of 35.07 feet, a chord bearing N 44°-15'-18"W, a distance of 32.27 feet to a 5/8 inch iron rod found on the east right-of-way of South Main Street.

THENCE, with the east right-of-way of South Main Street and the east line of the aforesaid 0.683 acre tract, N 04°-04'-00"W, a distance of 132.65 feet to the point of beginning.

Containing 0.733 acre.

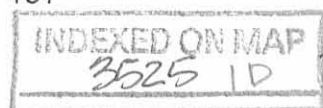
The basis for bearings is the center-line of South Main Street, being N 04°-04'-00"W, and all other bearings are from angles and distances measured in a field survey by Lee Surveying and Mapping Co., Inc. on October 21, 2008.



ORIGINAL STAMP IN GREEN

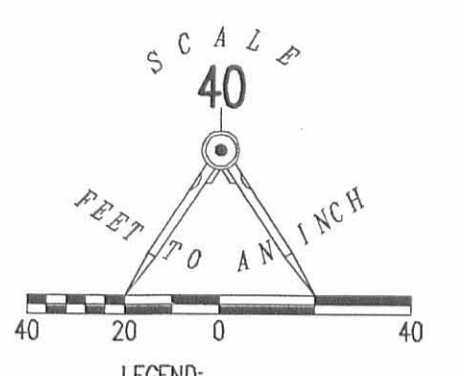
Description prepared by:

William K. Bruce
Professional Surveyor 7437
October 22, 2008

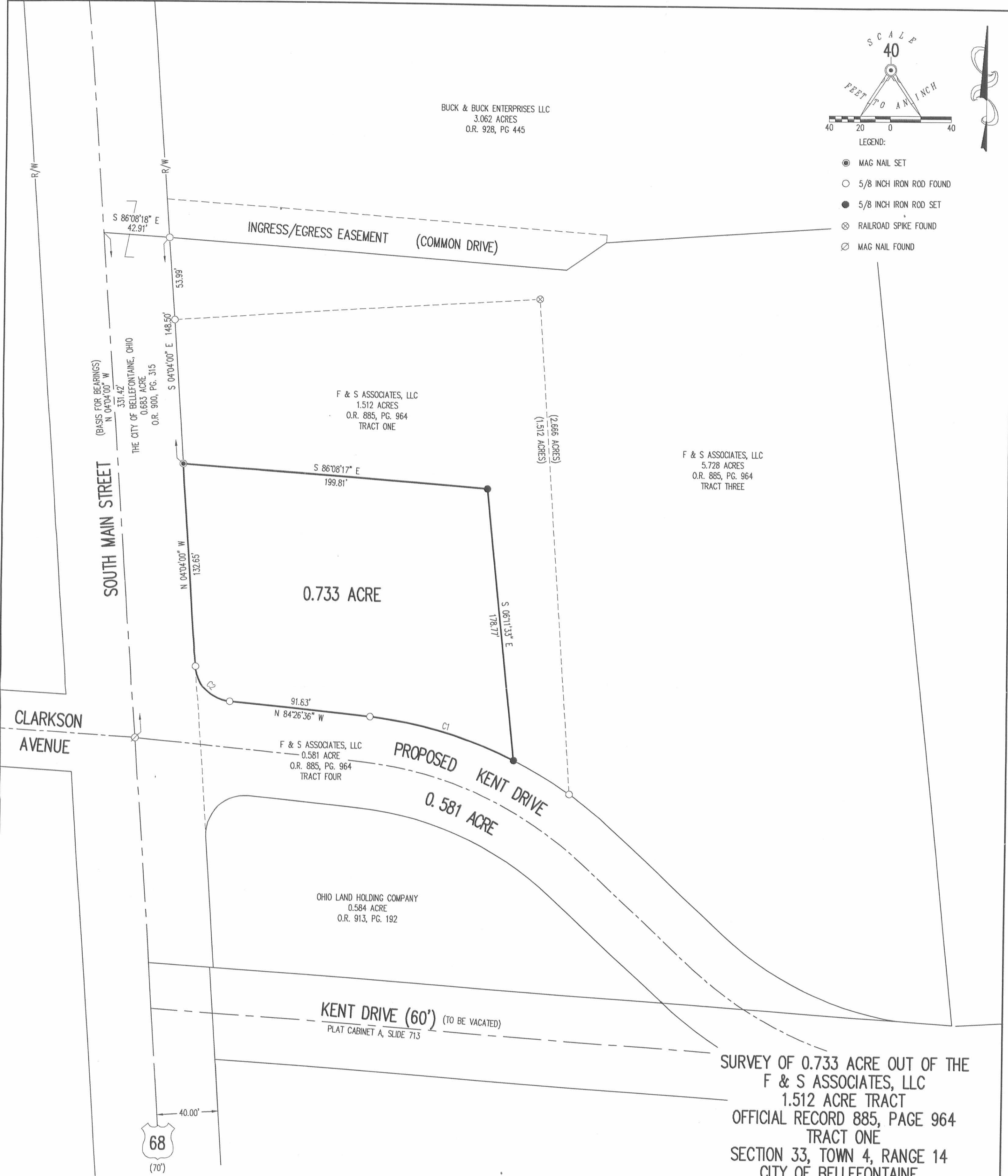


1734108

REV'D 10-23-08 SWM OK



BUCK & BUCK ENTERPRISES LLC
3.062 ACRES
O.R. 928, PG 445



F & S ASSOCIATES, LLC
5.728 ACRES
O.R. 885, PG. 964
TRACT THREE

F & S ASSOCIATES, LLC
1.512 ACRES
O.R. 885, PG. 964
TRACT ONE

F & S ASSOCIATES, LLC
0.581 ACRE
O.R. 885, PG. 964
TRACT FOUR

OHIO LAND HOLDING COMPANY
0.584 ACRE
O.R. 913, PG. 192

SURVEY OF 0.733 ACRE OUT OF THE
F & S ASSOCIATES, LLC
1.512 ACRE TRACT
OFFICIAL RECORD 885, PAGE 964
TRACT ONE
SECTION 33, TOWN 4, RANGE 14
CITY OF BELLEFONTAINE
LAKE TOWNSHIP
LOGAN COUNTY, OHIO

CURVE	DELTA ANGLE	RADIUS	ARC LENGTH	CHORD BEARING	CHORD LENGTH
C1	20°22'19"	280.00'	99.56'	N 74°15'26" W	99.03'
C2	80°22'36"	25.00'	35.07'	N 44°15'18" W	32.27'

SURVEYED BY:



William K. Bruce
WILLIAM K. BRUCE
PROFESSIONAL SURVEYOR 7437
OCTOBER 21, 2008

COPYRIGHT 2008 BY:
LEE SURVEYING & MAPPING CO., INC.
117 North Madriver Street
BELLEFONTAINE, OHIO 43311
(937) 593-7335

THE PROPOSED LOCATION OF KENT DRIVE WAS PROVIDED BY
BELLEFONTAINE CITY ENGINEER, TIMOTHY NOTESTINE P.E., P.S.

2 WORKING DAYS
BEFORE YOU DIG
CALL TOLL FREE 800-362-2764
OHIO UTILITIES PROTECTION SERVICE

INDEXED ON MAP
3526 1P

KSS D1008 1734108 L-1734-1

Lee Surveying and Mapping Co., Inc.

Land Surveys • Topography • Subdivisions • Construction Layout

117 N. Madriver St.
Bellefontaine OH 43311



Phone: (937) 593-7335
Fax: (937) 593-7444

F & S ASSOCIATES, LLC 4.178 ACRES

Lying in Section 33, Town 4, Range 14, City of Bellefontaine, Lake Township, Logan County, Ohio.

Being all of the F & S Associates, LLC 1.512 acre tract and part of the 5.728 acre tract as deeded and described in Official Record 885, Page 964, Tract One and Tract Three of the Logan County Records of Deeds and being more particularly described as follows:

Commencing on a MAG nail set on the intersection of the center-lines of Clarkson Avenue and South Main Street.

THENCE, with the center-line of South Main Street, N 04°-04'-00"W, a distance of 331.42 feet to a point.

THENCE, within the right-of-way of South Main Street, S 86°-08'-18"E, a distance of 42.91 feet to a 5/8 inch iron rod set on the east right-of-way of South Main Street at the TRUE POINT OF BEGINNING.

THENCE, S 86°-08'-18"E, a distance of 261.26 feet to a railroad spike set.

THENCE, N 54°-47'-09"E, a distance of 31.73 feet to a railroad spike set.

THENCE, N 85°-56'-00"E, a distance of 177.38 feet to a 5/8 inch iron rod set.

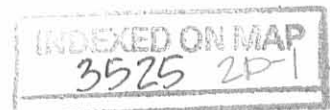
THENCE, with the west line of Cross Pointe Condominiums Phase III (Plat Cabinet A, Slide 751-B) and Jado Ville (Plat Cabinet A, Slide 713-A), S 06°-11'-33"E, a distance of 526.03 feet to a 5/8 inch iron rod set.

THENCE, with the north right-of-way of Kent Drive (60 feet wide, Plat Cabinet A, Slide 713), N 86°-12'-00"W, a distance of 35.32 feet to a 5/8 inch iron rod set.

THENCE, with the northerly lines of the F & S Associates, LLC 0.581 acre tract (O.R. 885, Pg. 964, Tract Four), the following six courses:

With a curve to the right, having a central angle of 33°-47'-42", a radius of 220.00 feet, an arc length of 129.76 feet, a chord bearing N 64°-26'-21"W, a distance of 127.89 feet to a 5/8 inch iron rod set.

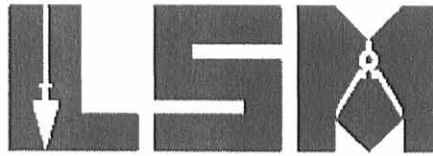
N 47°-32'-30"W, a distance of 100.15 feet to a 5/8 inch iron rod set.



Lee Surveying and Mapping Co., Inc.

Land Surveys • Topography • Subdivisions • Construction Layout

117 N. Madriver St.
Bellefontaine OH 43311



Phone: (937) 593-7335
Fax: (937) 593-7444

With a curve to the left, having a central angle of $07^{\circ}-43'-32''$, a radius of 280.00 feet, an arc length of 37.75 feet, a chord bearing $N 51^{\circ}-24'-16''W$, a distance of 37.73 feet to a 5/8 inch iron rod set.

With a curve to the left, having a central angle of $29^{\circ}-10'-34''$, a radius of 280.00 feet, an arc length of 142.58 feet, a chord bearing $N 69^{\circ}-51'-19''W$, a distance of 141.05 feet to a 5/8 inch iron rod set.

$N 84^{\circ}-26'-36''W$, a distance of 91.83 feet to a 5/8 inch iron rod set.

With a curve to the right, having a central angle of $80^{\circ}-22'-36''$, a radius of 25.00 feet, an arc length of 35.07, a chord bearing $N 44^{\circ}-15'-18''W$, a distance of 32.27 feet to a 5/8 inch iron rod set on the east right-of-way of South Main Street.

THENCE, with the east right-of-way of South Main Street and the east line of the City of Bellefontaine, Ohio 0.683 acre tract (O.R. 900, Pg. 315), $N 04^{\circ}-04'-00''W$, a distance of 281.15 feet to the point of beginning, passing a 5/8 inch iron rod set at 227.16 feet.

Containing 4.178 acres.

The basis for bearings is the center-line of South Main Street, being $N 04^{\circ}-04'-00''W$, and all other bearings are from angles and distances measured in a field survey by Lee Surveying and Mapping Co., Inc. on March 23, 2005, June 22, 2005 and July 7, 2008.

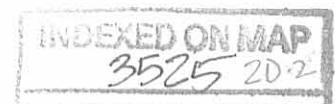


ORIGINAL STAMP IN GREEN

Description prepared by:

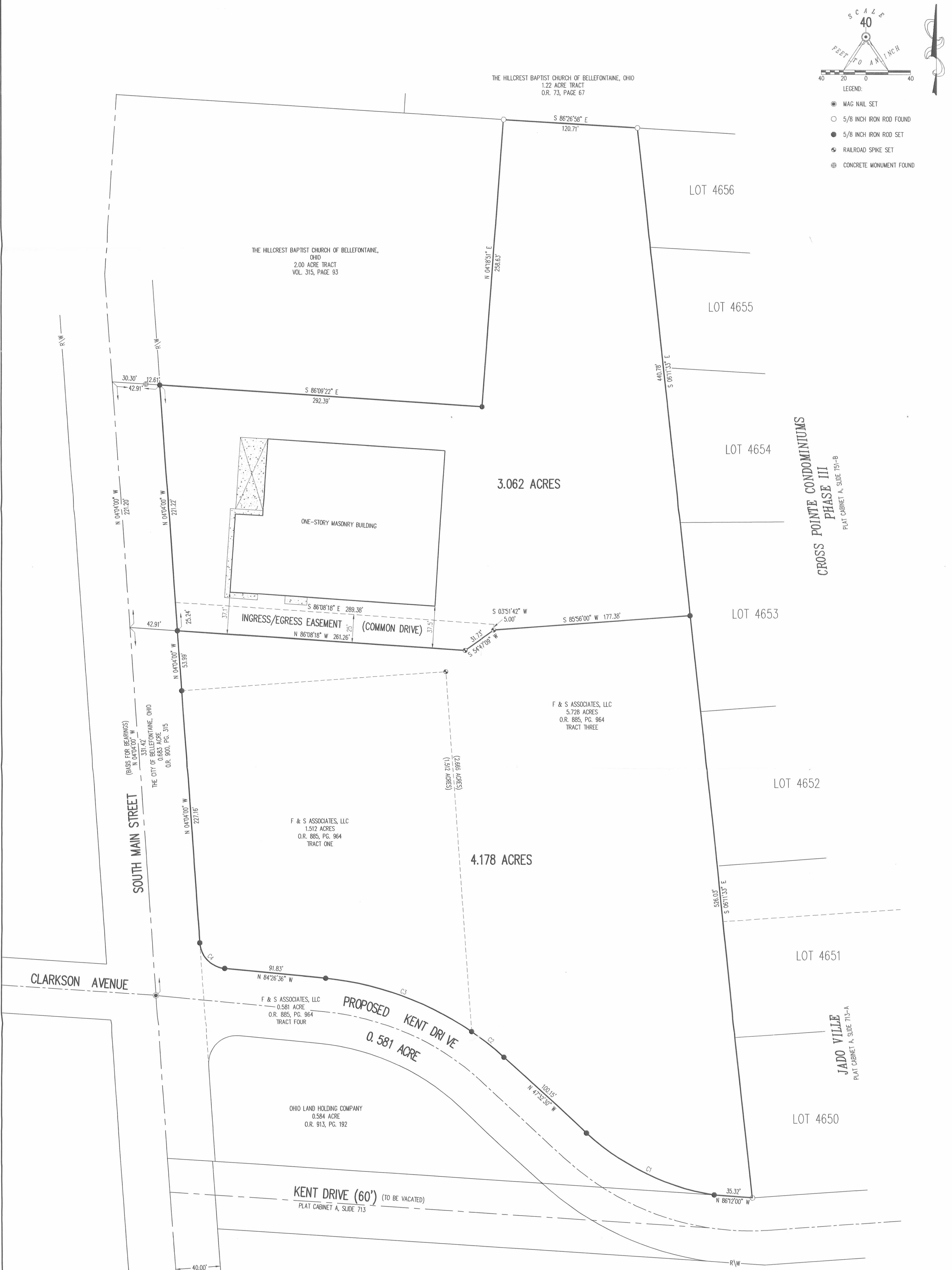
William K. Bruce
Professional Surveyor 7437
September 5, 2008

1734088



SCALE
40
FEET TO 1 INCH

LEGEND:
 ● MAG NAIL SET
 ○ 5/8 INCH IRON ROD FOUND
 ● 5/8 INCH IRON ROD SET
 ✦ RAILROAD SPIKE SET
 ⊗ CONCRETE MONUMENT FOUND



CURVE	DELTA ANGLE	RADIUS	ARC LENGTH	CHORD BEARING	CHORD LENGTH
C1	33°47'42"	220.00'	129.76'	N 64°26'21" W	127.89'
C2	07°43'32"	280.00'	37.75'	N 51°24'16" W	37.73'
C3	29°10'34"	280.00'	142.58'	N 69°51'19" W	141.05'
C4	80°22'36"	25.00'	35.07'	N 44°15'18" W	32.27'

SURVEY OF TWO TRACTS OUT OF THE
F & S ASSOCIATES, LLC
5.728 ACRE TRACT AND 1.512 ACRE TRACT
OFFICIAL RECORD 885, PAGE 964
TRACT ONE AND TRACT THREE
SECTION 33, TOWN 4, RANGE 14
CITY OF BELLEFONTAINE
LAKE TOWNSHIP
LOGAN COUNTY, OHIO
SURVEYED BY:

William K. Bruce
WILLIAM K. BRUCE
PROFESSIONAL SURVEYOR 7437
MARCH 23, 2005
REVISED JUNE 22, 2005
REVISED JULY 7, 2008
REVISED SEPTEMBER 5, 2008



COPYRIGHT 2008 BY:
LEE SURVEYING & MAPPING CO., INC.
117 North Madison Street
BELLEFONTAINE, OHIO 43311
(937) 593-7335
KSS 00908 1734088 L-1734-1

THE PROPOSED LOCATION OF KENT DRIVE WAS PROVIDED BY
BELLEFONTAINE CITY ENGINEER, TIMOTHY MOTESLINE P.E., P.S.

2 WORKING DAYS
BEFORE YOU DIG
CALL TOLL FREE 800-362-2764
OHIO UTILITIES PROTECTION SERVICE

INDEXED ON MAP
3525 2P

REF ID 7-9-08 SMY RIC

Lee Surveying and Mapping Co., Inc.

Land Surveys • Topography • Subdivisions • Construction Layout

117 N. Madriver St.
Bellefontaine OH 43311



Phone: (937) 593-7335
Fax: (937) 593-7444

F & S ASSOCIATES, LLC 3.062 ACRES

Lying in Section 33, Town 4, Range 14, City of Bellefontaine, Lake Township, Logan County, Ohio.

Being out of the F & S Associates, LLC 5.728 acre tract as deeded and described in Official Record 885, Page 964, Tract Three of the Logan County Records of Deeds and being more particularly described as follows:

Commencing on a MAG nail set on the intersection of the center-lines of Clarkson Avenue and South Main Street.

THENCE, with the center-line of South Main Street, N 04°-04'-00"W, a distance of 552.62 feet to a point.

THENCE, with the north line of The City of Bellefontaine, Ohio, 0.683 acre tract (O.R. 900, Pg. 315), S 86°-09'-22"E, a distance of 42.91 feet to a 5/8 inch iron rod set on the east right-of-way of South Main Street at the TRUE POINT OF BEGINNING, passing a concrete monument found at 30.30 feet.

THENCE, with the lines of The Hillcrest Baptist Church of Bellefontaine, Ohio, 2.00 acre tract (Vol. 315, Pg. 93), the following two courses:

S 86°-09'-22"E, a distance of 292.39 feet to a 5/8 inch iron rod set.

N 04°-18'-51"E, a distance of 258.63 feet to a 5/8 inch iron rod found.

THENCE, with the south line of The Hillcrest Baptist Church of Bellefontaine, Ohio, 1.22 acre tract (O.R. 73, Pg. 67), S 86°-26'-58"E, a distance of 120.71 feet to a 5/8 inch iron rod found.

THENCE, with the west line of Cross Pointe Condominiums Phase III (Plat Cabinet A, Slide 751-B), S 06°-11'-33"E, a distance of 440.78 feet to a 5/8 inch iron rod set.

THENCE, S 85°-56'-00"W, a distance of 177.38 feet to a railroad spike set.

THENCE, S 54°-47'-09"W, a distance of 31.73 feet to a railroad spike set.

THENCE, N 86°-08'-18"W, a distance of 261.26 feet to a 5/8 inch iron rod set on the east right-of-way of South Main Street.

THENCE, with the east right-of-way of South Main Street and the east line of the aforesaid 0.683 acre tract, N 04°-04'-00"W, a distance of 221.22 feet to the point of beginning.

Containing 3.062 acres.

The basis for bearings is the center-line of South Main Street, being N 04°-04'-00"W, and all other bearings are from angles and distances measured in a field survey by Lee Surveying and Mapping Co., Inc. on March 23, 2005, June 22, 2005 and July 7, 2008.



ORIGINAL STAMP IN GREEN

Description prepared by:

A handwritten signature in black ink that reads 'William K. Bruce'.

William K. Bruce
Professional Surveyor 7437
July 7, 2008



1734078

REC ID 7-9-08 SMM OK

Lee Surveying and Mapping Co., Inc.

Land Surveys • Topography • Subdivisions • Construction Layout

117 N. Madriver St.
Bellefontaine OH 43311



Phone: (937) 593-7335
Fax: (937) 593-7444

F & S ASSOCIATES, LLC INGRESS/EGRESS EASEMENT

Lying in Section 33, Town 4, Range 14, City of Bellefontaine, Lake Township, Logan County, Ohio.

Being an ingress/egress easement over a portion of the F & S Associates, LLC 5.728 acre tract as deeded and described in Official Record 885, Page 964, Tract Three of the Logan County Records of Deeds and being more particularly described as follows:

Commencing on a MAG nail set on the intersection of the center-lines of Clarkson Avenue and South Main Street.

THENCE, with the center-line of South Main Street, N 04°-04'-00"W, a distance of 552.62 feet to a point.

THENCE, with the north line of The City of Bellefontaine, Ohio, 0.683 acre tract (O.R. 900, Pg. 315), S 86°-09'-22"E, a distance of 42.91 feet to a 5/8 inch iron rod set on the east right-of-way of South Main Street, passing a concrete monument found at 30.30 feet.

THENCE, with the east right-of-way of South Main Street and the east line of the said 0.683 acre tract, S 04°-04'-00"E, a distance of 195.98 feet to a point at the TRUE POINT OF BEGINNING.

THENCE, S 86°-08'-18"E, a distance of 289.38 feet to a point.

THENCE, S 03°-51'-42"W, a distance of 5.00 feet to a railroad spike set.

THENCE, S 54°-47'-09"W, a distance of 31.73 feet to a railroad spike set.

THENCE, N 86°-08'-18"W, a distance of 261.26 feet to a 5/8 inch iron rod set on the east right-of-way of South Main Street.

THENCE, with the east right-of-way of South Main Street and the east line of the aforesaid 0.683 acre tract, N 04°-04'-00"W, a distance of 25.24 feet to the point of beginning.

The basis for bearings is the center-line of South Main Street, being N 04°-04'-00"W, and all other bearings are from angles and distances measured in a field survey by Lee Surveying and Mapping Co., Inc. on March 23, 2005, June 22, 2005 and July 7, 2008.

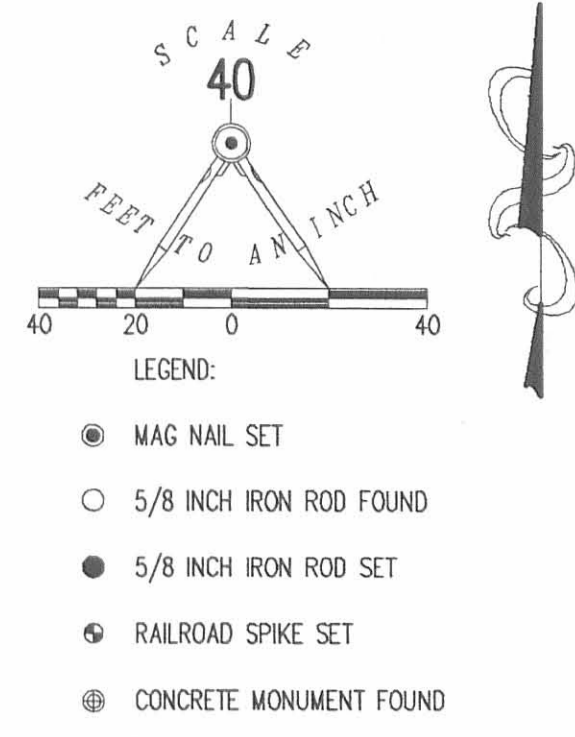


Description prepared by:

William K. Bruce
Professional Surveyor 7437
July 7, 2008

1734078





THE HILLCREST BAPTIST CHURCH OF BELLEFONTAINE, OHIO
1.22 ACRE TRACT
O.R. 73, PAGE 67

THE HILLCREST BAPTIST CHURCH OF BELLEFONTAINE, OHIO
2.00 ACRE TRACT
VOL. 315, PAGE 93

3.062 ACRES

ONE-STORY MASONRY BUILDING

INGRESS/EGRESS EASEMENT (COMMON DRIVE)

F & S ASSOCIATES, LLC
5.728 ACRES
O.R. 885, PG. 964
TRACT THREE

F & S ASSOCIATES, LLC
1.512 ACRES
O.R. 885, PG. 964
TRACT ONE

F & S ASSOCIATES, LLC
0.581 ACRE
O.R. 885, PG. 964
TRACT FOUR

OHIO LAND HOLDING COMPANY
0.584 ACRE
O.R. 913, PG. 192

CROSS POINTE CONDOMINIUMS
PHASE III
PLAT CABINET A, SLIDE 751-B

JADO VILLE
PLAT CABINET A, SLIDE 713-A

CLARKSON AVENUE

SOUTH MAIN STREET

KENT DRIVE (60') (TO BE VACATED)
PLAT CABINET A, SLIDE 713

SURVEY OF 3.062 ACRES OUT OF THE
F & S ASSOCIATES, LLC
5.728 ACRE TRACT
OFFICIAL RECORD 885, PAGE 964
TRACT THREE
SECTION 33, TOWN 4, RANGE 14
CITY OF BELLEFONTAINE
LAKE TOWNSHIP
LOGAN COUNTY, OHIO

SURVEYED BY:

William K. Bruce
WILLIAM K. BRUCE
PROFESSIONAL SURVEYOR 7437
MARCH 23, 2005
REVISED JUNE 22, 2005
REVISED JULY 7, 2008



COPYRIGHT 2008 BY:
LEE SURVEYING & MAPPING CO., INC.
117 North Madriver Street
BELLEFONTAINE, OHIO 43311
(937) 593-7335
KSS 00708 1734078 L-1734-1

CURVE	DELTA ANGLE	RADIUS	ARC LENGTH	CHORD BEARING	CHORD LENGTH
C1	33°47'42"	220.00'	129.76'	N 64°26'21" W	127.89'
C2	07°43'32"	280.00'	37.75'	N 51°24'16" W	37.73'
C3	29°10'34"	280.00'	142.58'	N 69°51'19" W	141.05'
C4	80°22'36"	25.00'	35.07'	N 44°15'18" W	32.27'

THE PROPOSED LOCATION OF KENT DRIVE WAS PROVIDED BY
BELLEFONTAINE CITY ENGINEER, TIMOTHY NOTESTINE P.E., P.S.

2 WORKING DAYS
BEFORE YOU DIG
CALL TOLL FREE **800-362-2764**
OHIO UTILITIES PROTECTION SERVICE

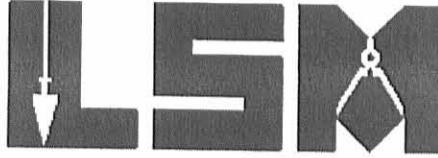
INDEXED ON MAP
8525 2P

ORIGINAL STAMP IN GREEN

Lee Surveying and Mapping Co., Inc.

Land Surveys • Topography • Subdivisions • Construction Layout

117 N. Madriver St.
Bellefontaine OH 43311



Phone: (937) 593-7335
Fax: (937) 593-7444

F & S ASSOCIATES, LLC 0.450 ACRE

Lying in Section 33, Town 4, Range 14, Lake Township, City of Bellefontaine, Logan County, Ohio.

Being out of the F & S Associates, LLC 5.728 acre tract as deeded and described in Official Record 885, Page 964 Tract Three in the Logan County Records of Deeds and being more particularly described as follows:

Commencing at a 5/8 inch iron rod found at the northwest corner of Lot 4656 of Jado Ville (Plat Cabinet A, Slide 713-A) also being the northwest corner of Cross Pointe Condominiums Phase III (Plat Cabinet A, Slide 751-B).

THENCE, with the west line of said Jado Ville and Cross Pointe Condominiums Phase III, S 6°-11'-33"E, a distance of 440.78 feet to a 5/8 inch iron rod set at THE TRUE POINT OF BEGINNING.

THENCE, with the west line of said Jado Ville and Cross Pointe Condominiums Phase III, S 6°-11'-33"E, a distance of 34.38 feet to a 5/8 inch iron rod found.

THENCE, with the north line extended of the F & S Associates, LLC 1.512 acre tract (O.R. 885, Pg. 964, Tract One), S 85°-56'-00"W, a distance of 464.57 feet to a 5/8 inch iron rod found, passing a railroad spike found at 224.57 feet.

THENCE, with the east line of the F & S Associates, LLC 0.683 acre tract (O.R. 885, Pg. 964, Tract Two), N4°-04'-00"W, a distance of 66.11 feet to a MAG nail set.

THENCE, S 86°-13'-58"E, a distance of 232.95 feet to a MAG nail set.

THENCE, N 85°-56'-00"E, a distance of 232.52 feet to the point of beginning.

Containing 0.450 acre.

The basis for bearings is the west line of Cross Pointe Condominiums Phase III, being S 6°-11'-33"E, and all other bearings are from angles and distances measured in a field survey by Lee Surveying and Mapping Co., Inc. on December 6, 2007.

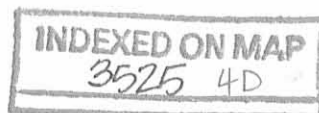


ORIGINAL STAMP IN GREEN

Description prepared by:

William K. Bruce
Professional Surveyor 7437
December 6, 2007

L-1734127

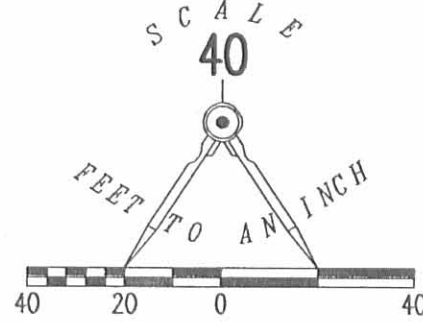


REV'D 12-10-07 S.M.J.

THE HILLCREST BAPTIST CHURCH OF BELLEFONTAINE, OHIO
1.22 ACRE TRACT
O.R. 73, PAGE 67

LEGEND

- 5/8 INCH IRON ROD SET
- 5/8 INCH IRON ROD FOUND
- ⊗ RAILROAD SPIKE FOUND
- MAG NAIL SET

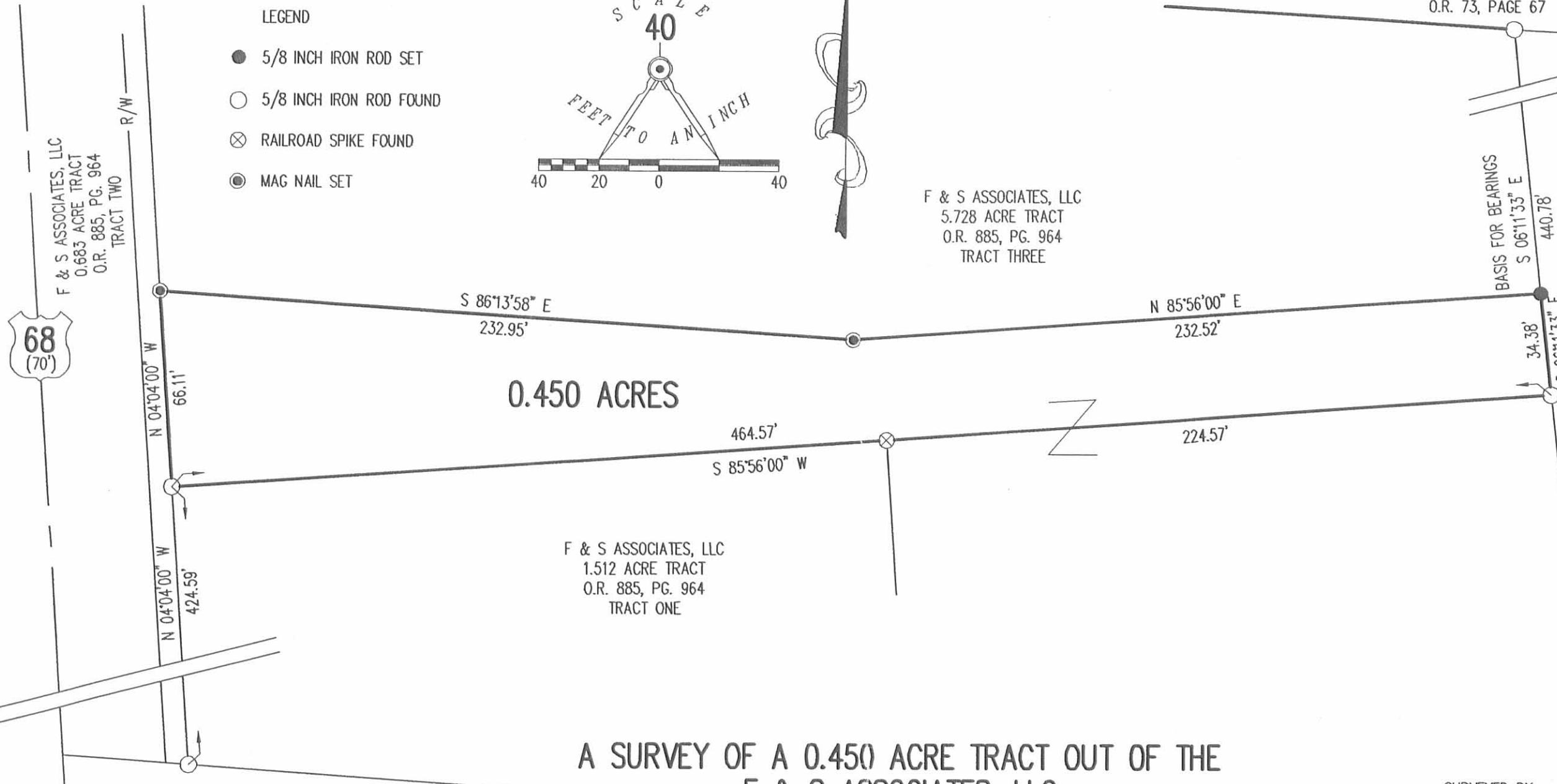


F & S ASSOCIATES, LLC
5.728 ACRE TRACT
O.R. 885, PG. 964
TRACT THREE

F & S ASSOCIATES, LLC
1.512 ACRE TRACT
O.R. 885, PG. 964
TRACT ONE

LOT 4656
JADO VILLE
PLAT CABINET A, SLIDE 713-A

LOT 4653
**CROSS POINTE CONDOMINIUMS
PHASE III**
PLAT CABINET A, SLIDE 751-B
LOT 4652



0.450 ACRES

A SURVEY OF A 0.450 ACRE TRACT OUT OF THE
F & S ASSOCIATES, LLC
5.728 ACRE TRACT
OFFICIAL RECORD 885, PAGE 964 TRACT THREE
SECTION 33, TOWN 4, RANGE 14
CITY OF BELLEFONTAINE
LAKE TOWNSHIP
LOGAN COUNTY, OHIO

SURVEYED BY:

William K. Bruce

WILLIAM K. BRUCE
PROFESSIONAL SURVEYOR 7437
DECEMBER 6, 2007

COPYRIGHT 2007 BY:
LEE SURVEYING & MAPPING CO., INC.
117 North Madriver Street
BELLEFONTAINE, OHIO 43311
(937) 593-7335
surveys@lsminc.us



ORIGINAL STAMP IN GREEN

ADW D1207 1734127 L-1734127-3



F & S ASSOCIATES, LLC
0.683 ACRE TRACT
O.R. 885, PG. 964
TRACT TWO

R/W

N 04°04'00" W
66.11'

N 04°04'00" W
424.59'

KENT DRIVE (60')
PLAT CABINET A, SLIDE 713

2 WORKING DAYS

BEFORE YOU DIG

CALL TOLL FREE **800-362-2764**

OHIO UTILITIES PROTECTION SERVICE

INDEXED ON MAP
3525 4P

REC'D 5-10-06 SWY OK

Lee Surveying and Mapping Co., Inc.

Land Surveys • Topography • Subdivisions • Construction Layout

117 N. Madriver St.
Bellefontaine OH 43311



Phone: (937) 593-7335
Fax: (937) 593-7444

1975 - 2005 - 30 YEARS OF EXCELLENCE

**F & S ASSOCIATES
2.572 ACRES
AUTO DEALERSHIP PARCEL**

Lying in Section 33, Town 4, Range 14, Lake Township, City of Bellefontaine, Logan County Ohio.

Being out of the F & S Associates 5.728 acre tract as deeded and described in Official Record 781, Page 792 and being more particularly described as follows:

Commencing at a MAG nail set at the intersection of center-lines of South Main Street (U.S. Route 68) (60 feet wide), and Kent Drive (60 feet wide).

THENCE, with the center-line of South Main Street, N 4°-04'-00"W, a distance of 730.12 feet to a point.

THENCE, with the south line of the Hillcrest Baptist Church of Bellefontaine, Ohio 2.00 acre tract (Vol. 315, Pg. 93), S 86°-09'-22"E, a distance of 42.91 feet to a 5/8 inch iron rod set at THE TRUE POINT OF BEGINNING, passing a concrete monument found at 30.30 feet.

THENCE, with the south line of the said 2.00 acre tract and the said line extended, S 86°-09'-22"E, 461.10 feet to a 5/8 inch iron rod set, passing a 5/8 inch iron rod set at 292.39 feet.

THENCE, with the west line of the Cross Point Condominiums Phase III (Plat Cabinet A, Slide 751-B) and the said line extended, S 6°-11'-33"E, a distance of 211.90 feet to a 5/8 inch iron rod set.

THENCE, with the north line extended and the north line of the F & S Associates 1.512 acre tract (O.R. 781, Pg. 783), S 85°-56'00"W, a distance of 464.57 feet to a 5/8 inch iron rod set, passing a railroad spike set at 224.57 feet.

THENCE, with the east line of the F & S Associates 0.683 acre tract (O.R. 781, Pg. 783) and the proposed right-of-way of U.S. Route 68, N 4°-04'-00"W, a distance of 275.21 feet to the point of beginning.

Containing 2.572 acres.

The basis for bearings is the center-line of South Main Street being N 4°-04'-00"W, and all other bearings are from angles and distances measured in a field survey by Lee Surveying and Mapping Co., Inc. on March 23, 2005 and May 5, 2006.

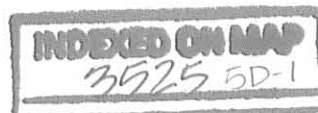


ORIGINAL STAMP IN GREEN

Description prepared by:

Jeffrey I. Lee
Professional Surveyor 6359
April 4, 2005
Revised May 5, 2006

L-1734056

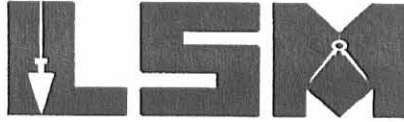


1 RECD 5-11-06 SMY/MLC

Lee Surveying and Mapping Co., Inc.

Land Surveys • Topography • Subdivisions • Construction Layout

117 N. Madriver St.
Bellefontaine OH 43311



Phone: (937) 593-7335
Fax: (937) 593-7444

1975 - 2005 - 30 YEARS OF EXCELLENCE

**F & S ASSOCIATES
0.860 ACRE
CHURCH PARCEL**

Lying in Section 33, Town 4, Range 14, Lake Township, City of Bellefontaine, Logan County Ohio.

Being out of the F & S Associates 5.728 acre tract as deeded and described in Official Record 781, Page 792 and being more particularly described as follows:

Commencing at a MAG nail set at the intersection of center-lines of South Main Street (U.S. Route 68) (60 feet wide), and Kent Drive (60 feet wide).

THENCE, with the center-line of South Main Street, N 4°-04'-00"W, a distance of 730.12 feet to a point.

THENCE, with the south line of the Hillcrest Baptist Church of Bellefontaine, Ohio 2.00 acre tract (Vol. 315, Pg. 93), S 86°-09'-22"E, a distance of 335.30 feet to a 5/8 inch iron rod set at THE TRUE POINT OF BEGINNING, passing a concrete monument found at 30.30 feet and, a 5/8 inch iron rod set at 42.91 feet.

THENCE, with the east line of the said 2.00 acre tract, N 4°-18'-51"E, a distance of 258.63 feet to a 5/8 inch iron rod found.

THENCE, with the south line of the Hillcrest Baptist Church of Bellefontaine, Ohio 1.22 acre tract (O.R. 73, Pg. 67), S 86°-26'-58"E, a distance of 120.71 feet to a 5/8 inch iron rod found.

THENCE, with the west line of the Cross Pointe Condominiums Phase III (Plat Cabinet A, Slide 751-B), S 6°-11'-33"E, a distance of 263.27 feet to a 5/8 inch iron rod set.

THENCE, N 86°-09'-22"W, a distance of 168.71 feet to the point of beginning.

Containing 0.860 acre.

The basis for bearings is the center-line of South Main Street being N 4°-04'-00"W, and all other bearings are from angles and distances measured in a field survey by Lee Surveying and Mapping Co., Inc. on March 23, 2005 and May 5, 2006.

Description prepared by:



ORIGINAL STAMP IN GREEN

A handwritten signature in black ink, appearing to read 'Jeffrey I. Lee'.

Jeffrey I. Lee
Professional Surveyor 6359
April 4, 2005
Revised May 5, 2006

L-1734056



122'D 5-11-06 SWM OK

Lee Surveying and Mapping Co., Inc.

Land Surveys • Topography • Subdivisions • Construction Layout

117 N. Madriver St.
Bellefontaine OH 43311



Phone: (937) 593-7335
Fax: (937) 593-7444

1975 - 2005 - 30 YEARS OF EXCELLENCE

**F & S ASSOCIATES
2.296 ACRE
PARCEL C**

Lying in Section 33, Town 4, Range 14, Lake Township, City of Bellefontaine, Logan County Ohio.

Being out of the F & S Associates 5.728 acre tract as deeded and described in Official Record 781, Page 792 and being more particularly described as follows:

Beginning at a 5/8 inch iron rod found at the southwest corner of Jado Ville (Plat Cabinet A, Slide 713-A) on the north right-of-way of Kent Drive (60 feet wide).

THENCE, with the north right-of-way of Kent Drive N 86°-12'-00"W, a distance of 35.32 feet to a 5/8 inch iron rod set.

THENCE, with the lines of the F & S Associates 0.581 acre tract (O.R. 781, Pg. 792), the following three courses:

With a curve to the right having a central angle of 33°-47'-42", a radius of 220.00 feet, an arc length 129.76 feet, with a chord bearing N 64°-26'-21"W, a distance of 127.89 feet to a 5/8 inch iron rod set.

N 47°-32'-30"W, a distance of 100.15 feet to a 5/8 inch iron rod set.

With a curve to the left having a central angle of 7°-43'-32", a radius of 280.00 feet, an arc length of 37.75 feet, with a chord bearing N 51°-24'-16"W, a distance of 37.73 feet to a 5/8 inch iron rod set.

THENCE, with the east line of the F & S Associates 1.512 acre tract (O.R. 781, Pg. 783), N 4°-04'-00"W, a distance of 325.00 feet to a railroad spike set.

THENCE, N 85°-56'-00"E, a distance of 224.57 feet to a 5/8 inch iron rod set.

THENCE, with the west line of the Cross Pointe Condominiums Phase III, (Plat Cabinet A, Slide 751-B) and the west line of the Jado Ville (Plat Cabinet A, Slide 713-A), S 6°-11'-33"E, a distance of 491.64 feet to the point of beginning.

Containing 2.296 acres.

The basis for bearings is the center-line of South Main Street being N 4°-04'-00"W, and all other bearings are from angles and distances measured in a field survey by Lee Surveying and Mapping Co., Inc. on March 23, 2005 and May 5, 2006.



ORIGINAL STAMP IN GREEN

Description prepared by:

A handwritten signature in black ink, appearing to read 'Jeffrey I. Lee', written over a light-colored background.

Jeffrey I. Lee
Professional Surveyor 6359
April 4, 2005
Revised May 5, 2006



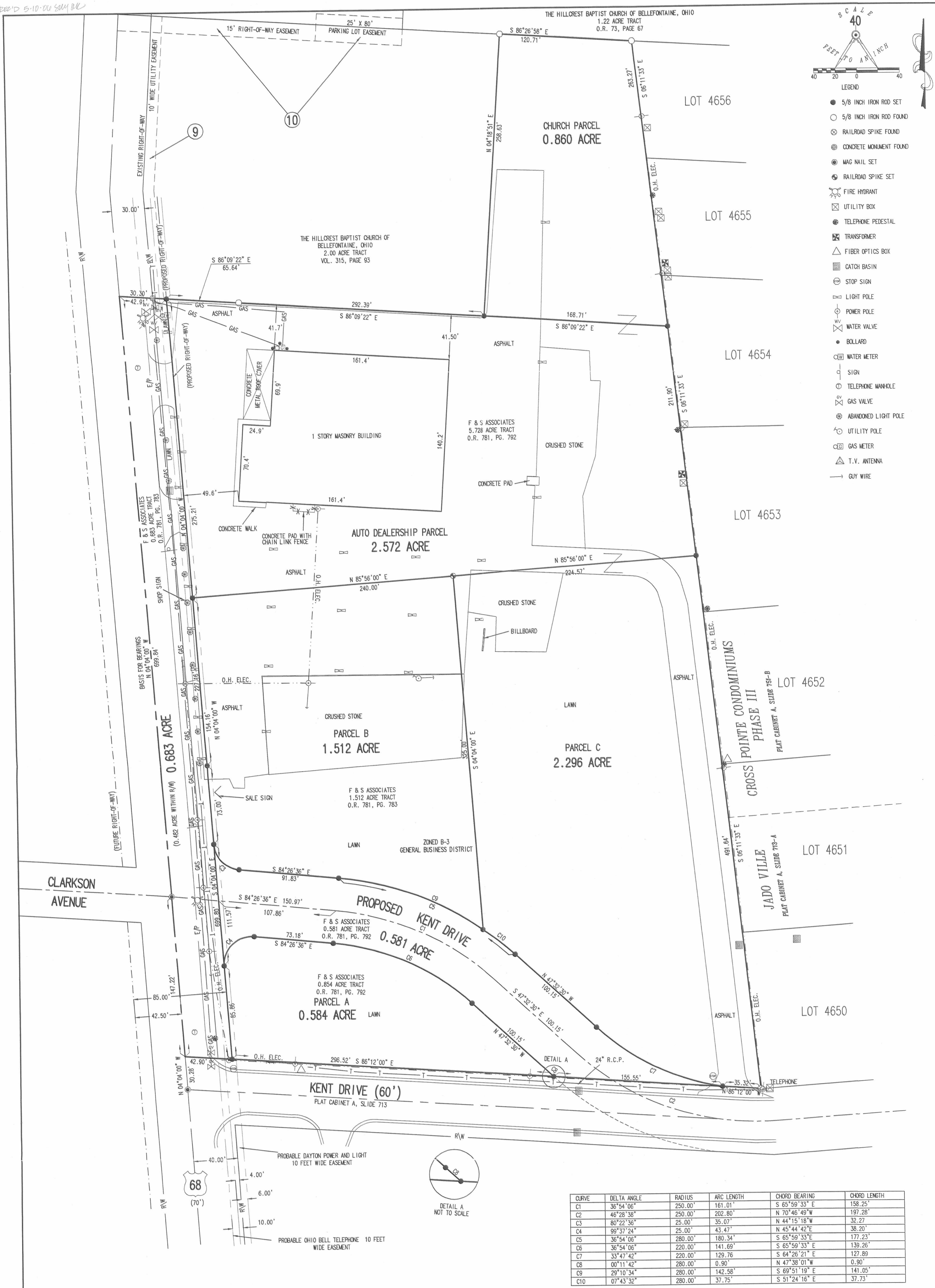
L-1734056

REV'D 5-10-06 SAM RL

SCALE
40
FEET TO AN INCH

LEGEND

- 5/8 INCH IRON ROD SET
- 5/8 INCH IRON ROD FOUND
- ⊗ RAILROAD SPIKE FOUND
- ⊙ CONCRETE MONUMENT FOUND
- ⊙ MAG NAIL SET
- ⊙ RAILROAD SPIKE SET
- ⊙ FIRE HYDRANT
- ⊙ UTILITY BOX
- ⊙ TELEPHONE PEDESTAL
- ⊙ TRANSFORMER
- ⊙ FIBER OPTICS BOX
- ⊙ CATCH BASIN
- ⊙ STOP SIGN
- ⊙ LIGHT POLE
- ⊙ POWER POLE
- ⊙ WATER VALVE
- BOLLARD
- ⊙ WATER METER
- ⊙ SIGN
- ⊙ TELEPHONE MANHOLE
- ⊙ GAS VALVE
- ⊙ ABANDONED LIGHT POLE
- ⊙ UTILITY POLE
- ⊙ GAS METER
- ⊙ T.V. ANTENNA
- GUY WIRE



ALL REFERENCED DOCUMENTS ARE FROM LAWYERS TITLE INSURANCE CORPORATION COMMITMENT FOR TITLE INSURANCE. CASE No. 310.846-05 HAVING AN EFFECTIVE DATE OF MARCH 16, 2005 AT 7:00 A.M. OTHER EASEMENTS MAY EXIST. THE SURVEYOR DID NOT SEARCH FOR ADDITIONAL EASEMENTS.

- 9 EASEMENT TO CHARLES E. GRAHAM, OR THE GRAHAM CHEVROLET CADILLAC COMPANY AND THE CITY OF BELLEFONTAINE BY INSTRUMENT FILED OF RECORD MAY 1, 1964 AT 9:25 A.M. IN DEED VOLUME 294, PAGE 648, RECORDER'S OFFICE, LOGAN COUNTY, OHIO.
 - 10 AGREEMENT FOR EASEMENT, RIGHT-OF-WAY AND MAINTENANCE BY INSTRUMENT FILED OF RECORD JANUARY 13, 1989 AT 1:14 P.M. IN OFFICIAL RECORD 78, PAGE 168, RECORDER'S OFFICE, LOGAN COUNTY, OHIO.
- ZONE B-3
60 FEET MAXIMUM HEIGHT, ACCESSORY BUILDINGS 40 FEET. FRONT SETBACK 25 FEET.
NO SIDE OR REAR SETBACK EXCEPT WHEN ADJOINING A RESIDENTIAL DISTRICT THEN MINIMUM 25 FEET.
- EASEMENTS FOR GAS AND SANITARY SEWER LINES WERE NOT LOCATED.

FLOOD PANEL #390340 0003C
EFFECTIVE DATE JULY/16/1964
PANEL NOT PRINTED - AREA IN ZONE "C" AREA OF MINIMAL FLOODING
THE PROPERTY IS IN FLOOD ZONE "C"
PER FEMA MAP INDEX 390340-000

NOTE:
THE UNDERGROUND UTILITIES SHOWN HAVE BEEN LOCATED FROM A FIELD SURVEY OF ABOVE GROUND STRUCTURES AND EXISTING DRAWINGS PROVIDED TO THE SURVEYOR. THE SURVEYOR MAKES NO GUARANTEE THAT THE UNDERGROUND UTILITIES SHOWN ARE IN THE EXACT LOCATION INDICATED. ALTHOUGH, HE DOES STATE THAT THEY ARE LOCATED AS ACCURATELY AS POSSIBLE FROM INFORMATION AVAILABLE. THE SURVEYOR HAS NOT PHYSICALLY LOCATED THE UNDERGROUND UTILITIES. ADDITIONAL BURIED UTILITIES/STRUCTURES MAY BE ENCOUNTERED.

THE PROPOSED LOCATION OF KENT DRIVE WAS PROVIDED BY BELLEFONTAINE CITY ENGINEER, TIMOTHY NOTESTINE P.E., P.S.

A SURVEY OF 3 TRACTS OUT OF THE
F & S ASSOCIATES
5.728 ACRE TRACT
OFFICIAL RECORD 781, PAGE 792
SECTION 33, TOWN 4, RANGE 14
CITY OF BELLEFONTAINE
LAKE TOWNSHIP
LOGAN COUNTY, OHIO

SURVEYED BY:
JEFFREY L. LEE
PROFESSIONAL SURVEYOR 6359
MARCH 23, 2005
REVISED MAY 5, 2006 (BOUNDARY, ONLY)



COPYRIGHT 2006 BY:
LEE SURVEYING & MAPPING CO., INC.
117 North Madison Street
BELLEFONTAINE, OHIO 43311
(617) 583-7335

WATER
CITY OF BELLEFONTAINE
(937)-592-3561

ELECTRIC
DAYTON POWER AND LIGHT COMPANY
800-362-2764

PHONE
SPRINT
800-786-6572

GAS
VECTREN
800-909-7666

COMMUNICATIONS
QUEST COM
800-899-7780

O.U.P.S. TICKET NUMBER 0325 010 012
2 WORKING DAYS
BEFORE YOU DIG
CALL TOLL FREE 800-362-2764
OHIO UTILITIES PROTECTION SERVICE.



ADW D0506 1734056 L-1734056

Graham - Baker Survey Lake Township January 1963 4.00 Acres

The following described land in Lake Township, Logan County, Ohio and being in Section 33 Town 4 Range 14

Beginning at a small iron in the center of U.S.Route Number 68 also known as the Bellefontaine - West Liberty Pike, at the S.W. corner of the Baptist Church 2.00 acre tract. Thence with the south side of said Baptist Church 2.00 acre tract (and with the south side of said Baptist Church tract extended) S 86 - 12 E. 629.95 feet to an iron. The last described line passing a concrete right of way post at the east side of the State Highway at 30.28 feet. (Being 30.00 feet from the center of the State Highway when measured at right angles.)

Thence S. 4 - 04 E. 236.30 feet to an iron.

Thence S. 85 - 56 W. 624.00 feet to a small iron in the center of U.S.Route Number 68. The last described line passing an iron at the east side of the State Highway at 594.00 feet.

Thence with the center of U.S. Number 68 N. 4 - 04 W. 322.50 feet to the place of beginning.

The above described tract contains 4.00 acres and being off of the west side of a 75.79 acre tract now in the name of Marrietta Baker.

cc
Logan County Engineer



3525 4D



GRAHAM - BAKER SURVEY
 SEC. 33, T. 4, R. - 14
 LAKE TOWNSHIP
 F.F. WRIGHT - JANUARY 1963
 SCALE: 1" = 100'

INDEXED ON MAP
 SURVEY INDEX
 No. 3525

INDEXED ON MAP
 3525 6P

REC'D 6-27-05 SJM/ak
Lee Surveying and Mapping Co., Inc.

Land Surveys • Topography • Subdivisions • Construction Layout

117 N. Madriver St.
Bellefontaine OH 43311



Phone: (937) 593-7335
Fax: (937) 593-7444

1975 - 2005 - 30 YEARS OF EXCELLENCE

**GRAHAM
1.512 ACRE**

Lying in Section 33, Town 4, Range 14, Lake Township, City of Bellefontaine, Logan County Ohio.

Being out of the John C. Graham and Hazel J. Graham, Trustees of the Hazel J. Graham Revocable Trust Dated January 30, 1999, 8.342 acre tract and 0.748 acre tract as deeded and described in Official Record 421, Page 151, Parcels One and Two and being more particularly described as follows:

Beginning at a MAG nail set at the intersection of center-lines of South Main Street (U.S. Route 68) (60 feet wide), and Kent Drive (60 feet wide).

THENCE, with the center-line of South Main Street, N 4°-04'-00"W, a distance of 30.28 feet to a point.

THENCE, with the north right of way of Kent Drive extended, S 86°-12'-00"E, a distance of 42.90 feet to a 5/8 inch iron rod set.

THENCE, N 4°-04'-00"W, a distance of 197.43 feet to a 5/8 inch iron rod set at THE TRUE POINT OF BEGINNING.

THENCE, N 4°-04'-00"W, a distance of 227.16 feet to a 5/8 inch iron rod set.

THENCE, N 85°-56'-00"E, a distance of 240.00 feet to a railroad spike set.

THENCE, S 4°-04'-00"E, a distance of 325.00 feet to a 5/8 inch iron rod set.

THENCE, with a curve to the left having a central angle of 29°-10'-34", a radius of 280.00 feet, an arc length of 142.58 feet, with a chord bearing N 69°-51'-19"W, a distance of 141.05 feet to a 5/8 inch iron rod set.

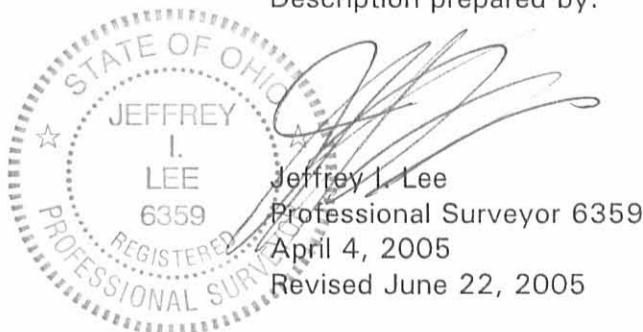
THENCE, N 84°-26'-36"W, a distance of 91.83 feet to a 5/8 inch iron rod set.

THENCE, with a curve to the right having a central angle of 80°-22'-36", a radius of 25.00 feet, an arc length of 35.07 feet, with a chord bearing N 44°-15'-18"W, a distance of 32.27 feet to the point of beginning

Containing 1.512 acre.

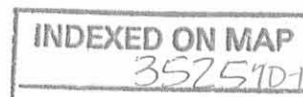
The basis for bearings is the center-line of South Main Street being N 4°-04'-00"W, and all other bearings are from angles and distances measured in a field survey by Lee Surveying and Mapping Co., Inc. on March 23, 2005 and June 22, 2005.

Description prepared by:



ORIGINAL STAMP IN GREEN

L-1734055



REC'D 6-27-05 8M/CLC

Lee Surveying and Mapping Co., Inc.

Land Surveys • Topography • Subdivisions • Construction Layout

117 N. Madriver St.
Bellefontaine OH 43311



Phone: (937) 593-7335
Fax: (937) 593-7444

1975 - 2005 - 30 YEARS OF EXCELLENCE

**GRAHAM
5.728 ACRE**

Lying in Section 33, Town 4, Range 14, Lake Township, City of Bellefontaine, Logan County Ohio.

Being out of the John C. Graham and Hazel J. Graham, Trustees of the Hazel J. Graham Revocable Trust Dated January 30, 1999, 8.342 acre tract and 0.748 acre tract as deeded and described in Official Record 421, Page 151, Parcels One and Two and being more particularly described as follows:

Beginning at a MAG nail set at the intersection of center-lines of South Main Street (U.S. Route 68) (60 feet wide), and Kent Drive (60 feet wide).

THENCE, with the center-line of South Main Street, N 4°-04'-00"W, a distance of 730.12 feet to a point.

THENCE, with the south line of the Hillcrest Baptist Church of Bellefontaine, Ohio 2.00 acre tract (Vol. 315, Pg. 93), S 86°-09'-22"E, a distance of 42.91 feet to a 5/8 inch iron rod set at THE TRUE POINT OF BEGINNING, passing a concrete monument found at 30.30 feet.

THENCE, with the lines of the said 2.00 acre tract the following two courses:

S 86°-09'-22"E, a distance of 292.39 feet to a 5/8 inch iron rod set, passing a 5/8 inch iron rod found at 65.64 feet.

N 4°-18'-51"E, a distance of 258.63 feet to a 5/8 inch iron rod found.

THENCE, with the south line of the Hillcrest Baptist Church of Bellefontaine, Ohio, 1.22 acre tract (O.R. 73, Pg. 67), S 86°-26'-58"E, at a distance of 120.71 feet to a 5/8 inch iron rod found at the northwest corner of Lot 4656 of Jado Ville (Plat Cabinet A, Slide 713-A) also being the northwest corner of Cross Point Condominiums (Plat Cabinet A, Slide 751).

THENCE, with the west line of the said Condominiums and said Jado Ville, S 6°-11'-33"W, a distance of 966.81 feet to a 5/8 inch iron rod found.

THENCE, with the north right-of-way of Kent Drive (60 feet wide), N 86°-12'-00"W, a distance of 35.32 feet to a 5/8 inch iron rod set.

THENCE, with a curve to the right having a central angle of 33°-47'-42", a radius of 220.00 feet, an arc length of 129.76 feet, with a chord bearing N 64°-26'-21"W, a distance of 127.89 feet to a 5/8 inch iron rod set.

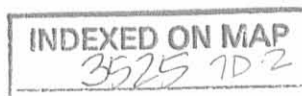
THENCE, N 47°-32'-30"W, a distance of 100.15 feet to a 5/8 inch iron rod set.

THENCE, with a curve to the left having a central angle of 7°-43'-32", a radius of 280.00 feet, an arc length of 37.75 feet, with a chord bearing N 51°-24'-16"W, a distance of 37.73 feet to a 5/8 inch iron rod set.

THENCE, N 4°-04'-00"W, a distance of 325.00 feet to a railroad spike set.

THENCE, S 85°-56'-00"W, a distance of 240.00 feet to a 5/8 inch iron rod set.

THENCE, N 4°-04'-00"W, a distance of 275.21 feet to the point of beginning.



Lee Surveying and Mapping Co., Inc.

Land Surveys • Topography • Subdivisions • Construction Layout

117 N. Madriver St.
Bellefontaine OH 43311



Phone: (937) 593-7335
Fax: (937) 593-7444

1975 - 2005 - 30 YEARS OF EXCELLENCE

Containing 5.728 acre.

The basis for bearings is the center-line of South Main Street being N 4°-04'-00"W, and all other bearings are from angles and distances measured in a field survey by Lee Surveying and Mapping Co., Inc. on March 23, 2005 and June 22, 2005.

Description prepared by:

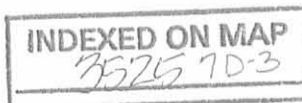


ORIGINAL STAMP IN GREEN

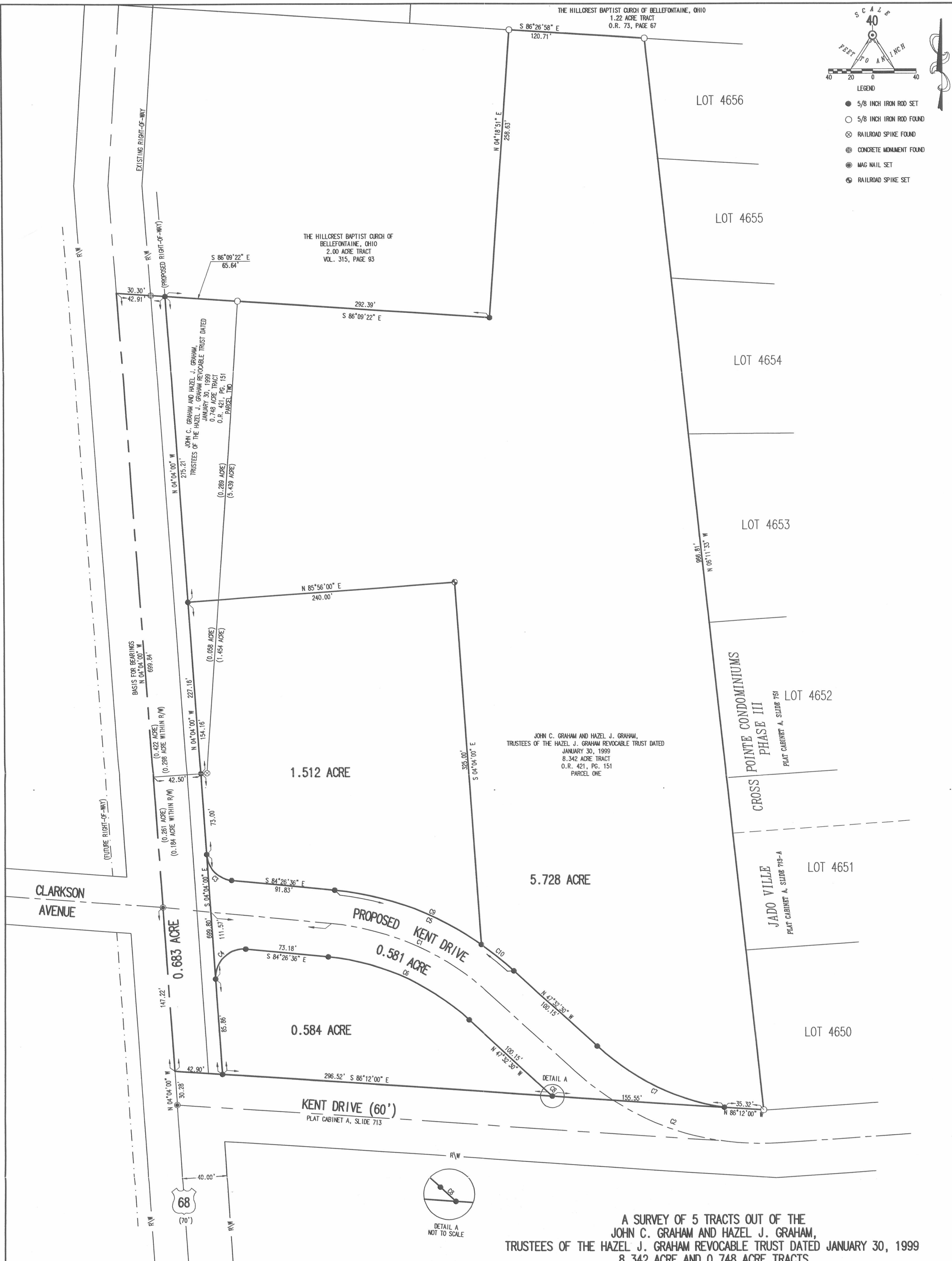
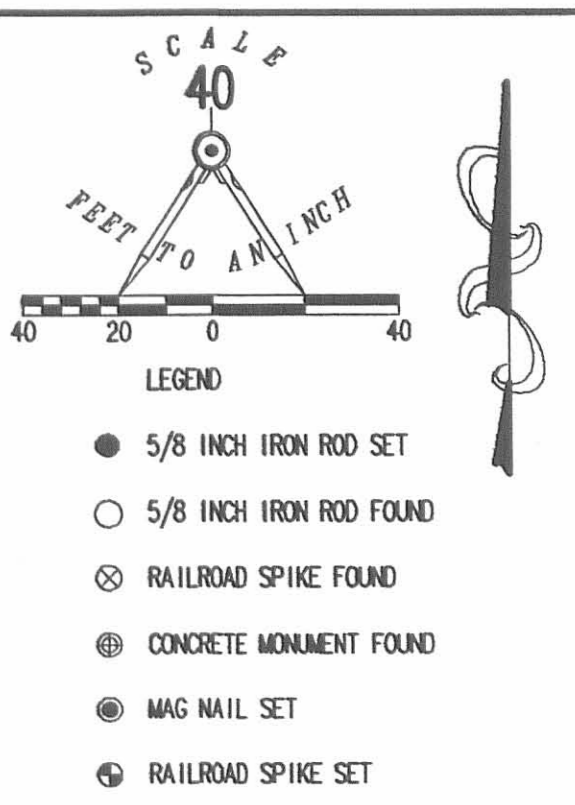
A handwritten signature in black ink, appearing to read 'Jeffrey I. Lee'.

Jeffrey I. Lee
Professional Surveyor 6359
April 4, 2005
Revised June 22, 2005

L-1734055

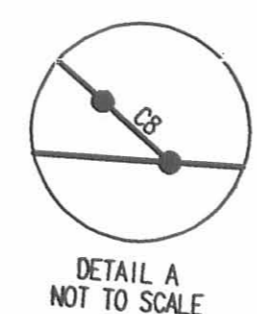


REC'D 0-27-05 SWM OK



A SURVEY OF 5 TRACTS OUT OF THE JOHN C. GRAHAM AND HAZEL J. GRAHAM, TRUSTEES OF THE HAZEL J. GRAHAM REVOCABLE TRUST DATED JANUARY 30, 1999 8.342 ACRE AND 0.748 ACRE TRACTS OFFICIAL RECORD 421, PAGE 151, PARCEL ONE AND TWO SECTION 33, TOWN 4, RANGE 14 CITY OF BELLEFONTAINE LAKE TOWNSHIP LOGAN COUNTY, OHIO

CURVE	DELTA ANGLE	RADIUS	ARC LENGTH	CHORD BEARING	CHORD LENGTH
C1	36°54'06"	250.00'	161.01'	S 65°59'33" E	158.25'
C2	46°28'38"	250.00'	202.80'	N 70°46'49" W	197.28'
C3	80°22'36"	25.00'	35.07'	N 44°15'18" W	32.27'
C4	99°37'24"	25.00'	43.47'	N 45°44'42" E	38.20'
C5	36°54'06"	280.00'	180.34'	S 65°59'33" E	177.23'
C6	36°54'06"	220.00'	141.69'	S 65°59'33" E	139.26'
C7	33°47'42"	220.00'	129.76'	S 64°26'21" E	127.89'
C8	00°11'42"	280.00'	0.90'	N 47°38'01" W	0.90'
C9	29°10'34"	280.00'	142.58'	S 69°51'19" E	141.05'
C10	07°43'32"	280.00'	37.75'	S 51°24'16" E	37.73'



SURVEYED BY: *Jeffrey J. Lee*
 JEFFREY J. LEE
 PROFESSIONAL SURVEYOR 6359
 MARCH 23, 2005
 REVISED JUNE 22, 2005

2 WORKING DAYS
BEFORE YOU DIG
 CALL TOLL FREE 800-362-2764
 OHIO UTILITIES PROTECTION SERVICE.

THE PROPOSED LOCATION OF KENT DRIVE WAS PROVIDED BY BELLEFONTAINE CITY ENGINEER, P.E., P.S.

INDEXED ON MAP
 3525.7P

COPYRIGHT 2005 BY:
 LEE SURVEYING & MAPPING CO., INC.
 117 North Medriver Street
 BELLEFONTAINE, OHIO 43311
 (937) 593-7335
 ADW D0605 1734055 L-1734055-1

REC'D 4-14-05 4PM OK

Lee Surveying and Mapping Co., Inc.

Land Surveys • Topography • Subdivisions • Construction Layout

117 N. Madriver St.
Bellefontaine OH 43311



Phone: (937) 593-7335
Fax: (937) 593-7444

1975 - 2005 - 30 YEARS OF EXCELLENCE

**GRAHAM
7.240 ACRE**

Lying in Section 33, Town 4, Range 14, Lake Township, City of Bellefontaine, Logan County Ohio.

Being out of the John C. Graham and Hazel J. Graham, Trustees of the Hazel J. Graham Revocable Trust Dated January 30, 1999, 8.342 acre tract and 0.748 acre tract as deeded and described in Official Record 421, Page 151, Parcels One and Two and being more particularly described as follows:

Beginning at a MAG nail set at the intersection of center-lines of South Main Street (U.S. Route 68) (60 feet wide), and Kent Drive (60 feet wide).

THENCE, with the center-line of South Main Street, N 4°-04'-00"W, a distance of 730.12 feet to a point.

THENCE, with the south line of the Hillcrest Baptist Church of Bellefontaine, Ohio 2.00 acre tract (Vol. 315, Pg. 93), S 86°-09'-22"E, a distance of 42.91 feet to a 5/8 inch iron rod set at THE TRUE POINT OF BEGINNING, passing a concrete monument found at 30.30 feet.

THENCE, with the lines of the said 2.00 acre tract the following two courses:

S 86°-09'-22"E, a distance of 292.39 feet to a 5/8 inch iron rod set, passing a 5/8 inch iron rod found at 65.64 feet.

N 4°-18'-51"E, a distance of 258.63 feet to a 5/8 inch iron rod found.

THENCE, with the south line of the Hillcrest Baptist Church of Bellefontaine, Ohio, 1.22 acre tract (O.R. 73, Pg. 67), S 86°-26'-58"E, at a distance of 120.71 feet to a 5/8 inch iron rod found at the northwest corner of Lot 4656 of Jado Ville (Plat Cabinet A, Slide 713-A) also being the northwest corner of Cross Point Condominiums (Plat Cabinet A, Slide 751).

THENCE, with the west line of the said Condominiums and said Jado Ville, S 6°-11'-33"W, a distance of 966.81 feet to a 5/8 inch iron rod found.

THENCE, with the north right-of-way of Kent Drive (60 feet wide), N 86°-12'-00"W, a distance of 35.32 feet to a 5/8 inch iron rod set.

THENCE, with a curve to the right having a central angle of 33°-47'-42", a radius of 220.00 feet, an arc length of 129.76 feet, with a chord bearing N 64°-26'-21"W, a distance of 127.89 feet to a 5/8 inch iron rod set.

THENCE, N 47°-32'-30"W, a distance of 100.15 feet to a 5/8 inch iron rod set.

THENCE, with a curve to the left having a central angle of 36°-54'-06", a radius of 280.00 feet, an arc length of 180.34 feet, with a chord bearing N 65°-59'-33"W, a distance of 177.23 feet to a 5/8 inch iron rod set.

THENCE, N 84°-26'-36"W, a distance of 91.83 feet to a 5/8 inch iron rod set.

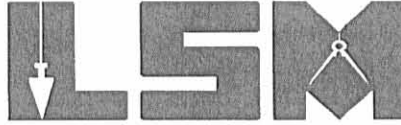
THENCE, with a curve to the right having with a central angle of 80°-22'-36", a radius of 25.00 feet, an arc length of 35.07 feet, with a chord bearing N 44°-15'-18"W, a distance of 32.27 feet to a 5/8 inch iron rod set.

INDEXED ON MAP
3525 8D-1

Lee Surveying and Mapping Co., Inc.

Land Surveys • Topography • Subdivisions • Construction Layout

117 N. Madriver St.
Bellefontaine OH 43311



Phone: (937) 593-7335
Fax: (937) 593-7444

1975 - 2005 - 30 YEARS OF EXCELLENCE

THENCE, with the proposed east right-of-way of South Main Street, N 4°-04'-00"W, a distance of 502.37 feet to the point of beginning, passing a 5/8 inch iron rod set at 73.00 feet.

Containing 7.240 acre.

The basis for bearings is the center-line of South Main Street being N 4°-04'-00"W, and all other bearings are from angles and distances measured in a field survey by Lee Surveying and Mapping Co., Inc. on March 23, 2005.

Description prepared by:



ORIGINAL STAMP IN GREEN

A handwritten signature in black ink, appearing to read 'J. Lee', written over the printed name and title.

Jeffrey I. Lee
Professional Surveyor 6359
April 4, 2005

L-1734025

INDEXED ON MAP
3525 0D-2

REC'D 4-14-05 SMY OK

Lee Surveying and Mapping Co., Inc.

Land Surveys • Topography • Subdivisions • Construction Layout

117 N. Madriver St.
Bellefontaine OH 43311



Phone: (937) 593-7335
Fax: (937) 593-7444

1975 - 2005 - 30 YEARS OF EXCELLENCE

GRAHAM 0.584 ACRE

Lying in Section 33, Town 4, Range 14, Lake Township, City of Bellefontaine, Logan County Ohio.

Being out of the John C. Graham and Hazel J. Graham, Trustees of the Hazel J. Graham Revocable Trust Dated January 30, 1999, 8.342 acre tract as deeded and described in Official Record 421, Page 151, Parcel One and being more particularly described as follows:

Beginning at a MAG nail set at the intersection of center-lines of South Main Street (U.S. Route 68) (60 feet wide), and Kent Drive (60 feet wide)

THENCE, with the center-line of South Main Street, N 4°-04'-00"W, a distance of 30.28 feet to a point.

THENCE, with the extension of the north right-of-way of Kent Drive and the north right of way of Kent Drive, S 86°-12'-00"E, a distance of 42.90 feet to a 5/8 inch iron rod set at THE TRUE POINT OF BEGINNING.

THENCE, with the proposed east line of South Main Street, which is 42.50 feet at right angles to the center-line of South Main Street, N 4°-04'-00"W, a distance of 85.86 feet to a 5/8 inch iron rod set.

THENCE, with a curve to the right having a central angle of 99°-37'-24", a radius of 25.00 feet, an arc length of 43.47 feet, with a chord bearing N 45°-44'-42"E, a distance of 38.20 feet to a 5/8 inch iron rod set.

THENCE, S 84°-26'-36"E, a distance of 73.18 feet to a 5/8 inch iron rod set.

THENCE, with a curve to the right having a central angle of 36°-54'-06", a radius of 220.00 feet, an arc length of 141.69 feet, with a chord bearing S 65°-59'-33"E, a distance of 139.26 feet to a 5/8 inch iron rod set.

THENCE, S 47°-32'-30"E, a distance of 100.15 feet to a 5/8 inch iron rod set.

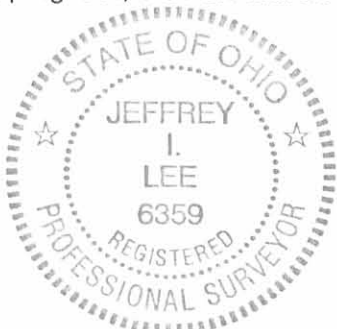
THENCE, with a curve to the left having a central angle of 0°-11'-02", a radius of 280.00 feet, an arc length of 0.90 feet, with a chord bearing S 47°-38'-01"E, a distance of 0.90 feet to a 5/8 inch iron rod set.

THENCE, with the north right-of-way of Kent Drive, N 86°-12'-00"W, a distance of 296.52 feet to the point of beginning.

Containing 0.584 acre.

The basis for bearings is the center-line of South Main Street being N 4°-04'-00"W, and all other bearings are from angles and distances measured in a field survey by Lee Surveying and Mapping Co., Inc. on March 23, 2005.

Description prepared by:



Jeffrey I. Lee
Professional Surveyor 6359

April 4, 2005



L-1734025

ORIGINAL STAMP IN GREEN

RECORD 4-14-05 8MM AK
Lee Surveying and Mapping Co., Inc.

Land Surveys • Topography • Subdivisions • Construction Layout

117 N. Madriver St.
Bellefontaine OH 43311



Phone: (937) 593-7335
Fax: (937) 593-7444

1975 - 2005 - 30 YEARS OF EXCELLENCE
GRAHAM
0.683 ACRE

Lying in Section 33, Town 4, Range 14, Lake Township, City of Bellefontaine, Logan County Ohio.

Being out of the John C. Graham and Hazel J. Graham, Trustees of the Hazel J. Graham Revocable Trust Dated January 30, 1999, 8.342 acre tract and 0.748 acre tract as deeded and described in Official Record 421, Page 151, Parcels One and Two and being more particularly described as follows:

Beginning at a MAG nail set at the intersection of center-lines of South Main Street (U.S. Route 68) (60 feet wide), and Kent Drive (60 feet wide).

THENCE, with the center-line of South Main Street, N 4°-04'-00"W, a distance of 30.28 feet to a point on the north line of Kent Drive extended at the TRUE POINT OF BEGINNING.

THENCE, with the center-line of South Main Street, N 4°-04'-00"W, a distance of 699.84 feet to a point, passing a MAG nail set at 147.22 feet at the intersection of center-lines of South Main Street and Clarkson Avenue (50 feet wide).

THENCE, with the south line of the Hillcrest Baptist Church of Bellefontaine, Ohio 2.00 acre tract (Vol. 315, Pg. 93), S 86°-09'-22"E, a distance of 42.91 feet to a 5/8 inch iron rod set, passing a concrete monument found at 30.30 feet.

THENCE, with the proposed east line of South Main Street, which is 42.50 feet at right angles to the center-line, S 4°-04'-00"E, a distance of 699.80 feet to a 5/8 inch iron rod set, passing a 5/8 inch iron rods set at 429.37 feet, 502.37 feet and 613.94 feet.

THENCE, with the north right-of-way of Kent Drive and the extension of the north right-of-way of Kent Drive, N 86°-12'-00"W, a distance of 42.90 feet to the point of beginning.

Containing 0.683 acre of which 0.482 acre is within the highway right-of-way. 0.261 acre is out of the 8.342 acre tract, and 0.422 acre out of the 0.748 acre tract.

The basis for bearings is the center-line of South Main Street being N 4°-04'-00"W, and all other bearings are from angles and distances measured in a field survey by Lee Surveying and Mapping Co., Inc. on March 23, 2005.

Description prepared by:



ORIGINAL STAMP IN GREEN

A handwritten signature in black ink, appearing to read 'Jeffrey I. Lee'.
Jeffrey I. Lee
Professional Surveyor 6359
April 4, 2005

L-1734025



Lee Surveying and Mapping Co., Inc.

Land Surveys • Topography • Subdivisions • Construction Layout

117 N. Madriver St.
Bellefontaine OH 43311



Phone: (937) 593-7335
Fax: (937) 593-7444

1975 - 2005 - 30 YEARS OF EXCELLENCE

**GRAHAM
0.581 ACRE**

Lying in Section 33, Town 4, Range 14, Lake Township, City of Bellefontaine, Logan County Ohio.

Being out of the John C. Graham and Hazel J. Graham, Trustees of the Hazel J. Graham Revocable Trust Dated January 30, 1999, 8.342 acre tract as deeded and described in Official Record 421, Page 151, Parcel One and being more particularly described as follows:

Beginning at a MAG nail set at the intersection of center-lines of South Main Street (U.S. Route 68) (60 feet wide), and Kent Drive (60 feet wide).

THENCE, with the center-line of South Main Street, N 4°-04'-00"W, a distance of 30.28 feet to a point on the north line of Kent Drive extended.

THENCE, with the extension of the north right-of-way of Kent Drive and the north right-of-way of Kent Drive, S 86°-12'-00"E, a distance of 42.90 feet to a 5/8 inch iron rod set.

THENCE, N 4°-04'-00"W, a distance of 85.86 feet to a 5/8 inch iron rod set at THE TRUE POINT OF BEGINNING.

THENCE, with the proposed east line of South Main Street, which is 42.50 feet at right angles to the center-line of South Main Street, N 4°-04'-00"W, a distance of 111.57 feet to a 5/8 inch iron rod set.

THENCE, with a curve to the left having a central angle of 80°-22'-36", a radius of 25.00 feet, an arc length of 35.07 feet, with a chord bearing of S 44°-15'-18"E, a distance of 32.27 feet to a 5/8 inch iron rod set.

THENCE, S 84°-26'-36"E, a distance of 91.83 feet to a 5/8 inch iron rod set.

THENCE, with a curve to the right having a central angle of 36°-54'-06", a radius of 280.00 feet, an arc length of 180.34 feet, a chord bearing of S 65°-59'-33"E, a distance of 177.23 feet to a 5/8 inch iron rod set.

THENCE, S 47°-32'-30"E, a distance of 100.15 feet to a 5/8 inch iron rod set.

THENCE, with a curve to the left having a central angle of 33°-47'-42", a radius of 220.00 feet, an arc length of 129.76 feet, with a chord bearing S 64°-26'-21"E, a distance of 127.89 feet to a 5/8 inch iron rod set on the north right-of-way of Kent Drive.

THENCE, with the north right-of-way of Kent Drive, N 86°-12'-00"W, a distance of 155.55 feet to a 5/8 inch iron rod set.

THENCE, with a curve to the right having a central angle of 0°-11'-42", a radius of 280.00 feet, an arc length of 0.90 feet, with a chord bearing of N 47°-38'-01"W, a distance of 0.90 feet to a 5/8 inch iron rod set.

THENCE, N 47°-32'-30"W, a distance of 100.15 feet to a 5/8 inch iron rod set.

THENCE, with a curve to the left having a central angle of 36°-54'-06", a radius of 220.00 feet, an arc length of 141.69 feet, a chord bearing of N 65°-59'-33"W, a distance of 139.26 feet to a 5/8 inch iron rod set.

THENCE, N 84°-26'-36"W, a distance of 73.18 feet to a 5/8 inch iron rod set.

Lee Surveying and Mapping Co., Inc.

Land Surveys • Topography • Subdivisions • Construction Layout

117 N. Madriver St.
Bellefontaine OH 43311



Phone: (937) 593-7335
Fax: (937) 593-7444

1975 - 2005 - 30 YEARS OF EXCELLENCE

THENCE, with a curve to the left having a central angle of $99^{\circ}-37'-24''$, a radius of 25.00 feet, an arc length of 43.47 feet, a chord bearing of $S\ 45^{\circ}-44'-42''W$, a distance of 38.20 feet to the point of beginning.

Containing 0.581 acre.

The basis for bearings is the center-line of South Main Street being $N\ 4^{\circ}-04'-00''W$, and all other bearings are from angles and distances measured in a field survey by Lee Surveying and Mapping Co., Inc. on March 23, 2005.

Description prepared by:

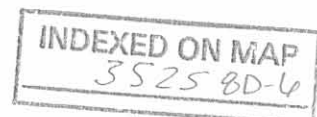


ORIGINAL STAMP IN GREEN

A handwritten signature in black ink, appearing to read 'Jeffrey I. Lee'.

Jeffrey I. Lee
Professional Surveyor 6359
April 4, 2005
Revised July 13, 2005

L-1734025

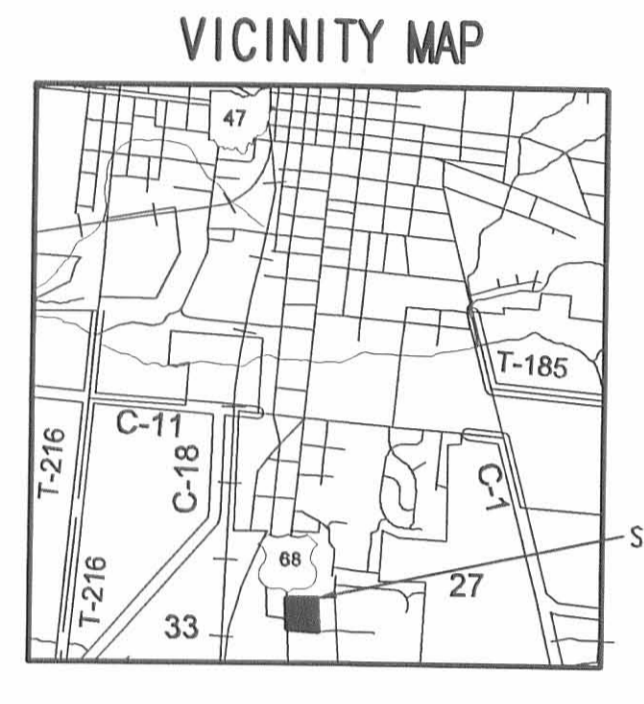
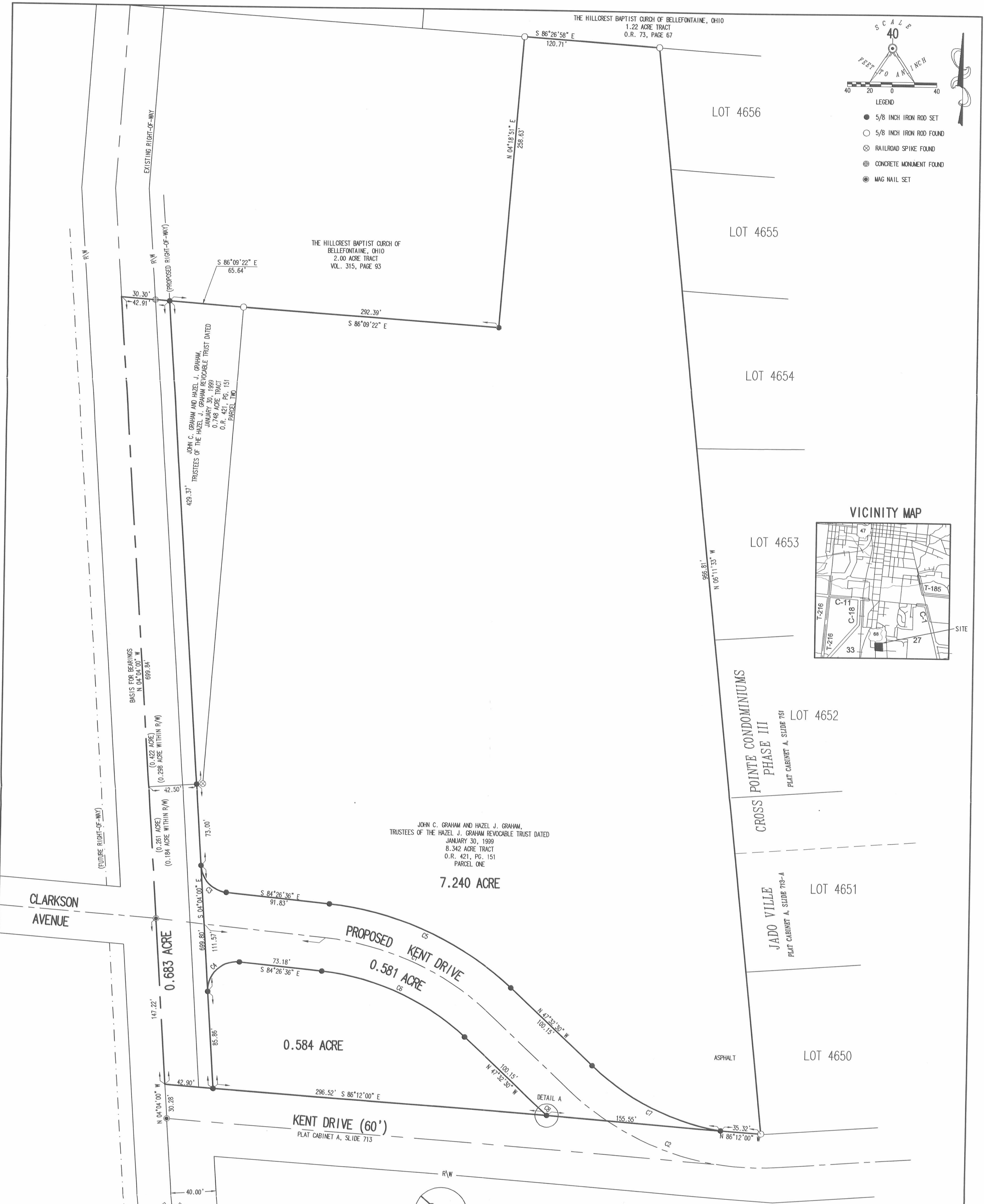


4-12-05 8:46 AM

SCALE
40
FEET TO 1 INCH

LEGEND

- 5/8 INCH IRON ROD SET
- 5/8 INCH IRON ROD FOUND
- ⊗ RAILROAD SPIKE FOUND
- ⊕ CONCRETE MONUMENT FOUND
- ⊙ MAG NAIL SET



CURVE	DELTA ANGLE	RADIUS	ARC LENGTH	CHORD BEARING	CHORD LENGTH
C1	36°54'06"	250.00'	161.01'	S 65°59'33" E	158.25'
C2	46°28'38"	250.00'	202.80'	N 70°46'49" W	197.28'
C3	80°22'36"	25.00'	35.07'	N 44°15'18" W	32.27'
C4	99°37'24"	25.00'	43.47'	N 45°44'42" E	38.20'
C5	36°54'06"	280.00'	180.34'	S 65°59'33" E	177.23'
C6	36°54'06"	220.00'	141.69'	S 65°59'33" E	139.26'
C7	33°47'42"	220.00'	129.76'	S 64°26'21" E	127.89'
C8	00°11'42"	280.00'	0.90'	N 47°38'01" W	0.90'

A SURVEY OF 4 TRACTS OUT OF THE
JOHN C. GRAHAM AND HAZEL J. GRAHAM,
TRUSTEES OF THE HAZEL J. GRAHAM REVOCABLE TRUST DATED JANUARY 30, 1999
8.342 ACRE AND 0.748 ACRE TRACTS
OFFICIAL RECORD 421, PAGE 151, PARCEL ONE AND TWO
SECTION 33, TOWN 4, RANGE 14
CITY OF BELLEFONTAINE
LAKE TOWNSHIP
LOGAN COUNTY, OHIO



SURVEYED BY:
[Signature]
JEFFREY I. LEE
PROFESSIONAL SURVEYOR 6359
MARCH 23, 2005

2 WORKING DAYS
BEFORE YOU DIG
CALL TOLL FREE 800-362-2764
OHIO UTILITIES PROTECTION SERVICE

INDEXED ON MAP
3525 8P

THE PROPOSED LOCATION OF KENT DRIVE WAS PROVIDED BY
BELLEFONTAINE CITY ENGINEER, P.E., P.S.

COPYRIGHT 2005 BY:
LEE SURVEYING & MAPPING CO., INC.
117 North Madriver Street
BELLEFONTAINE, OHIO 45311
(937) 593-7335

ADW 00305 1734025 L-1734025-1

Additional Right-of-Way Description

Situated in the State of Ohio, County of Logan, Township of Lake and in the City of Bellefontaine, being part of Section 33, Town 4, Range 14 and being a portion of the 0.584 acre tract belonging to F. & S. Associates LLC as is described in O. R. Vol. 885, Page 964 Tract Five and more particularly described as follows:

Beginning at a 5/8 inch iron rod found in the north right-of-way of Kent Drive at the common southeast corner of said 0.584 acre tract and a southwest corner of a 0.581 acre tract also in the name of F. & S. Associates LLC as is also described in O. R. Vol. 885, Page 964 Tract Four, said iron rod being located S.86°-12'-00"E. (this bearing is assumed and all other bearings and distances are as were measured in the field) 339.42 feet along the north right-of-way of Kent Drive projected from a point in the centerline of South Main Street (U.S.R. 68).

Thence with said north right-of-way line of Kent Drive N.86°-12'-00"W. 59.86 feet to a 5/8 inch iron bar set,

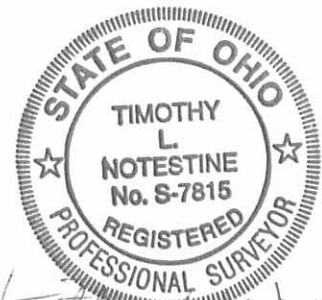
Thence across said 0.584 acre tract N.42°-27'-30"E. 37.39 feet to a 5/8 inch iron rod set in the south line of said 0.581 acre tract,

Thence with the south line of said 0.581 acre tract, S.47°-32'-30"E. 45.84 feet to a 5/8 inch iron rod found,

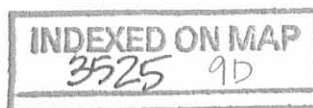
Thence continuing with said south line and with a curve to the left having a central angle of 0°-11'-42" a radius of 280.00 feet, an arc length of 0.90 feet and a chord bearing S.47°-38'-01"E. a distance of 0.90 feet to the place of beginning.

Containing 0.020 acres more or less.

This description prepared by Timothy L. Notestine, P.E., P.S. #S-7815 in December, 2007 based on a field survey on December 7, 2007.



Handwritten signature of Timothy L. Notestine



REC'D 12-19-07 SMJ/OK

ADDITIONAL RIGHT OF WAY PARCEL
SECTION 33, TOWN 4, RANGE 14
CITY OF BELLEFONTAINE
LAKE TOWNSHIP
LOGAN COUNTY, OHIO

F & S Associates, LLC
0.581 Acre Tract
O.R. 885, PG. 964
Tract Four

F & S Associates, LLC
0.584 Acre Tract
O.R. 885, PG. 964
Tract Five

S. MAIN STREET - USR 68

PROPOSED KENT DRIVE (60')

(339.42')

N42° 27' 30"E
37.39'

S47° 32' 30"E
45.84'

59.86'
N86° 12' 00"W

(0.020 ACRES)

KENT DRIVE (60')

SEE DETAIL

POB

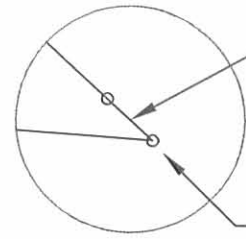


LEGEND

- 5/8" IRON ROD FOUND
- 5/8" IRON ROD SET



SCALE: 1" = 20'



DA = 00°11'42"
RAD = 280.00'
ARC LENGTH = 0.90'
CH BEARING = S 47°38'01"E
CH LENGTH = 0.90'

NOT TO SCALE

POB

Timothy L. Notestine
TIMOTHY L. NOTESTINE P.E., P.S. #S-7815
135 N. DETROIT ST.
BELLEFONTAINE, OHIO 43311
SURVEY DATE: 12/7/07

INDEXED ON MAP
35225 9P



APPROVED

5-10-16

Lee Surveying and Mapping Co., Inc.

Land Surveys • Topography • Subdivisions • Construction Layout

117 N. Madriver St.
Bellefontaine OH 43311



Phone: (937) 593-7335
Fax: (937) 593-7444
surveys@lsminc.us

OHIO LAND HOLDING COMPANY 0.774 ACRE

Lying in Section 33, Town 4, Range 14, City of Bellefontaine, Lake Township, Logan County, Ohio.

Being out of the Ohio Land Holding Company 0.584 acre tract as deeded and described in Official Record 913, Page 192, Vacated Kent Drive deeded and described in Official Record 1065, Page 340 and Ohio Land Holding Company 0.097 acre tract as deeded and described in Official Record 1205, Page 47 of the Logan County Records of Deeds and being more particularly described as follows:

Commencing at a MAG nail set at the intersection of center-lines of Clarkson Avenue, South Main Street (U.S. Route 68)(70 feet wide) and Kent Drive (60 feet wide).

THENCE, with the center-line of Kent Drive, S 84°-26'-36"E, a distance of 77.79 feet to a point.

THENCE, S 05°-33'-24"W, a distance of 30.00 feet to a 5/8 inch iron rod found at the TRUE POINT OF BEGINNING.

THENCE, with the right-of-way of Kent Drive the following three courses:

S 84°-26'-36"E, a distance of 73.05 feet to a 5/8 inch iron rod found.

With a curve to the right, having a central angle of 36°-54'-06", a radius of 220.00 feet, an arc length of 141.69 feet, a chord bearing of S 65°-59'-33"E, a distance of 139.26 feet to a 5/8 inch iron rod found.

S 47°-32'-30"E, a distance of 41.31 feet to a 5/8 inch iron rod found.

THENCE, with the City of Bellefontaine 0.028 acre tract (O.R. 966, Pg. 97, Parcel 43A-WD1), the following two courses:

S 17°-04'-38"W, a distance of 25.74 feet to a 5/8 inch iron rod found.

S 64°-33'-41"W, a distance of 24.81 feet to a 5/8 inch iron rod found.

THENCE, with the right-of-way of Kent Drive the following three courses:

S 76°-48'-41"W, a distance of 50.49 feet to a 5/8 inch iron rod found.

S 57°-49'-10"W, a distance of 26.02 feet to a 5/8 inch iron rod found.

Lee Surveying and Mapping Co., Inc.

Land Surveys • Topography • Subdivisions • Construction Layout

117 N. Madriver St.
Bellefontaine OH 43311



Phone: (937) 593-7335
Fax: (937) 593-7444
surveys@lsmcinc.us

S 24°-17'-35"W, a distance of 32.00 feet to a 5/8 inch iron rod found.

THENCE, with the north line of the Tractor Supply Company 4.679 acre tract (O.R. 562, Pg. 784), N 86°-17'-53"W, a distance of 133.33 feet to a 5/8 inch iron rod found.

THENCE, with the east right-of-way of South Main Street, N 04°-04'-00"W, a distance of 146.52 feet to a point, referenced by a 5/8 inch iron rod found that bears S 28°-20'-46"W, a distance of 0.23 feet.

THENCE, with the east lines of the City of Bellefontaine 0.003 acre tract (O.R. 966, Pg. 97, Parcel 43A-WD), the following two courses:

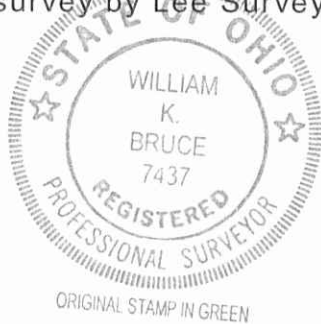
N 32°-29'-35"E, a distance of 25.00 feet to a 5/8 inch iron rod found.

N 68°-12'-21"E, a distance of 15.00 feet to the point of beginning.

Containing 0.774 acre.

Property is subject to any and all previous easements and rights-of-way of record.

The basis for bearings is the east right-of-way of South Main Street, being N 04°-04'-00"W, and all other bearings are from angles and distances measured in a field survey by Lee Surveying and Mapping Co., Inc. on April 25, 2016.



Description prepared by:

A handwritten signature in black ink that reads 'William K. Bruce'.

William K. Bruce
Professional Surveyor 7437
April 25, 2016

L-17341215

INDEXED ON MAP
3525 105-2



APPROVED

5-10-16

Lee Surveying and Mapping Co., Inc.

Land Surveys • Topography • Subdivisions • Construction Layout

117 N. Madriver St.
Bellefontaine OH 43311



Phone: (937) 593-7335
Fax: (937) 593-7444
surveys@lsminc.us

F & S ASSOCIATES, LLC 3.513 ACRES

Lying in Section 33, Town 4, Range 14, City of Bellefontaine, Lake Township, Logan County, Ohio.

Being out of the remainder of the F & S Associates, LLC 1.512 acre and 5.728 acre tract as deeded and described in Official Record 885, Page 964, Tracts One and Three, of the Logan County Records of Deeds and being more particularly described as follows:

Beginning at a 5/8 inch iron rod found at the southwest corner of Lot 4650 of Jado Ville (Plat Cabinet A, Slide 713-A) on the north right-of-way of Kent Drive (60 feet wide).

THENCE, with the north right-of-way of Kent Drive the following six courses:

N 86°-12'-00"W, a distance of 35.32 feet to a MAG nail set.

With a curve to the right, having a central angle of 33°-47'-42", a radius of 220.00 feet, an arc length of 129.76 feet, chord bearing N 64°-26'-21"W, a distance of 127.89 feet to a 5/8 inch iron rod set.

N 47°-32'-30"W, a distance of 100.15 feet to a 5/8 inch iron rod set.

With a curve to the left having a central angle of 36°-54'-04", a radius of 280.00 feet, an arc length of 180.34 feet, a chord bearing N 65°-59'-34"W, a distance of 177.24 feet to a 5/8 inch iron rod set, passing a 5/8 inch iron rod set at a distance of 37.75 feet arc distance.

N 84°-26'-36"W, a distance of 91.83 feet to a 5/8 inch iron rod set.

With a curve to the right, having a central angle of 80°-22'-36", a radius of 25.00 feet, an arc length of 35.07 feet, a chord bearing of N 44°-15'-18"W, a distance of 32.27 feet to a 5/8 inch iron rod set.

THENCE, with the east right-of-way of South Main Street (U.S. Route 68) (70 feet wide), N 04°-04'-00"W, a distance of 132.65 feet to a point, referenced by a 5/8 inch iron rod found that bears S 39°-31'-28"W, a distance of 0.34 feet.

THENCE, with the lines of the O'Reilly Auto Enterprises, LLC 0.665 acre tract (O.R. 144, Pg. 915) the following two courses:

S 86°-03'-26"E, a distance of 199.56 feet to a 5/8 inch iron rod found.

MEMBER: NATIONAL SOCIETY OF PROFESSIONAL SURVEYORS (NSPS)
PROFESSIONAL LAND SURVEYORS OF OHIO (PLSO)

INDEXED ON MAP
3525 100-3

Lee Surveying and Mapping Co., Inc.

Land Surveys • Topography • Subdivisions • Construction Layout

117 N. Madriver St.
Bellefontaine OH 43311



Phone: (937) 593-7335
Fax: (937) 593-7444
surveys@lsminc.us

N 06°-04'-34"W, a distance of 149.61 feet to a MAG nail set.

THENCE, with the south line of the Buck & Buck Enterprises LLC 3.062 acre tract (O.R. 928, Pg. 445), the following three courses:

S 86°-08'-19"E, a distance of 67.04 feet to a railroad spike set.

N 54°-47'-09"E, a distance of 31.73 feet to a railroad spike set.

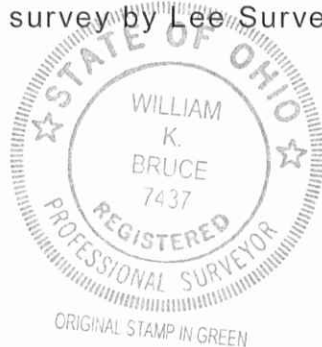
N 85°-56'-00"E, a distance of 177.38 feet to a 5/8 inch iron rod set.

THENCE, with the west lines of Cross Pointe Condominiums Phase III (Plat Cabinet A, Slide 751-B) and the west lines of the Joshua B. Kotsaris part of Lot 4651 and Lot 4650 of Jado Ville (Plat Cabinet A, Slide 713-A)(O.R. 800, Pg. 871) S06°-11'-33"E, a distance of 526.03 feet to the point of beginning.

Containing 3.513 acres.

Property is subject to any and all previous easements and rights-of-way of record.

The basis for bearings is the east right-of-way of South Main Street, being N 04°-04'-00"W, and all other bearings are from angles and distances measured in a field survey by Lee Surveying and Mapping Co., Inc. on April 25, 2016.



Description prepared by:

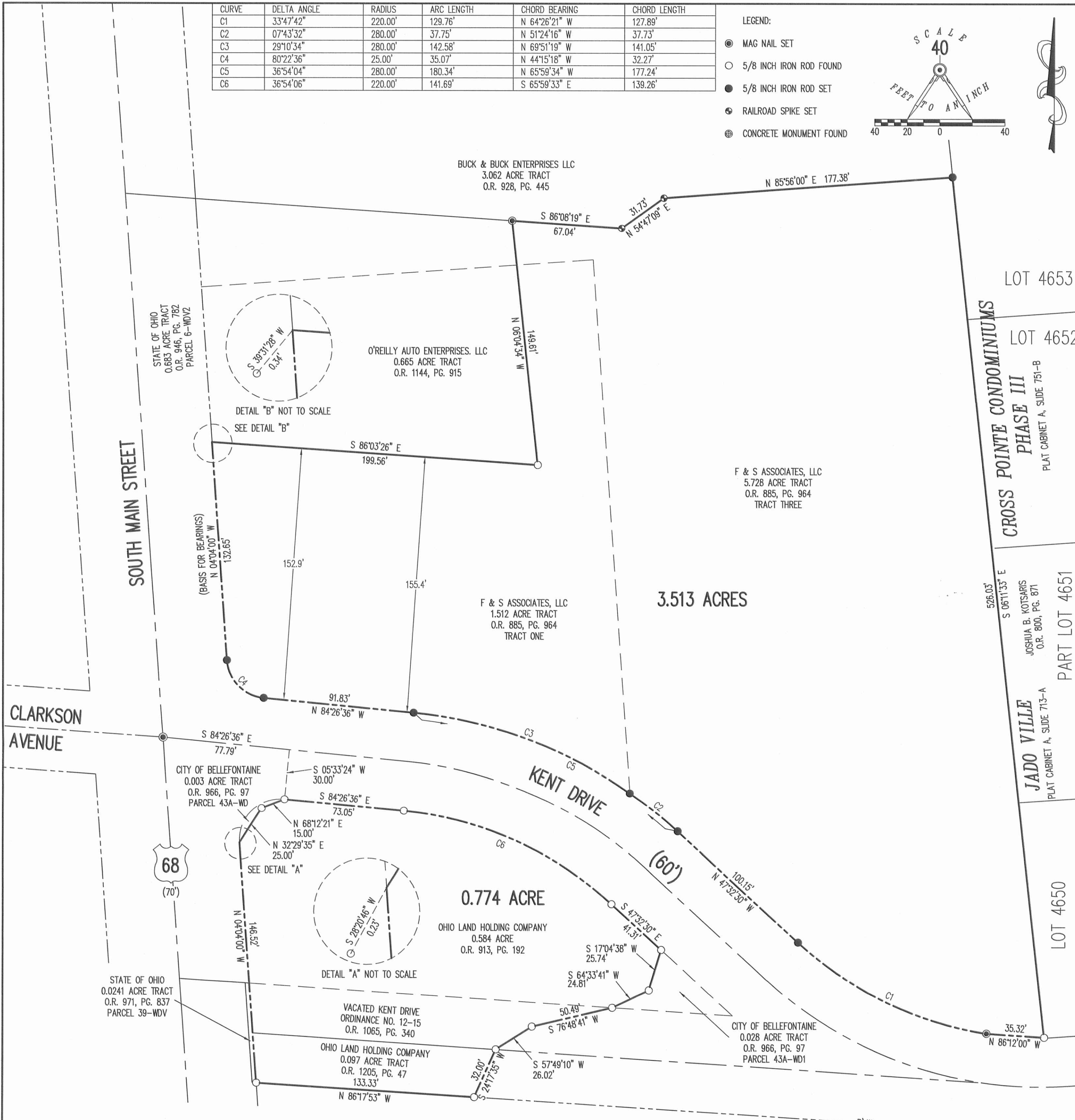
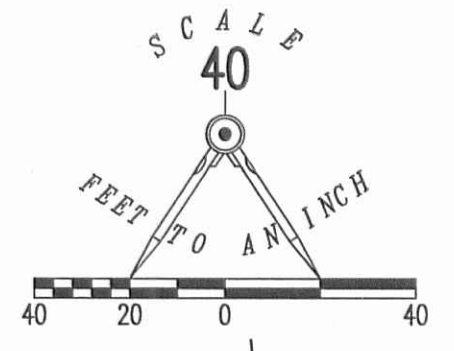
William K. Bruce
Professional Surveyor 7437
April 25, 2016

L-17341215

INDEXED ON MAP
3525 10D-4

CURVE	DELTA ANGLE	RADIUS	ARC LENGTH	CHORD BEARING	CHORD LENGTH
C1	33°47'42"	220.00'	129.76'	N 64°26'21" W	127.89'
C2	07°43'32"	280.00'	37.75'	N 51°24'16" W	37.73'
C3	29°10'34"	280.00'	142.58'	N 69°51'19" W	141.05'
C4	80°22'36"	25.00'	35.07'	N 44°15'18" W	32.27'
C5	36°54'04"	280.00'	180.34'	N 65°59'34" W	177.24'
C6	36°54'06"	220.00'	141.69'	S 65°59'33" E	139.26'

- LEGEND:
- MAG NAIL SET
 - 5/8 INCH IRON ROD FOUND
 - 5/8 INCH IRON ROD SET
 - ⊕ RAILROAD SPIKE SET
 - ⊕ CONCRETE MONUMENT FOUND



A SURVEY OF A 0.774 ACRE TRACT OUT OF OHIO LAND HOLDING COMPANY 0.584 ACRE TRACT OFFICIAL RECORD 913, PAGE 192 VACATED KENT DRIVE AND OHIO LAND HOLDING COMPANY 0.097 ACRE TRACT OFFICIAL RECORD 1205, PAGE 47 AND A 3.513 ACRE TRACT OUT OF F & S ASSOCIATES, LLC 5.728 ACRE TRACT AND 1.512 ACRE TRACT OFFICIAL RECORD 885, PAGE 964 TRACT ONE AND TRACT THREE SECTION 33, TOWN 4, RANGE 14 CITY OF BELLEFONTAINE LAKE TOWNSHIP LOGAN COUNTY, OHIO

2 WORKING DAYS
BEFORE YOU DIG
CALL TOLL FREE 800-362-2764
OHIO UTILITIES PROTECTION SERVICE.

THIS SURVEY WAS PREPARED IN THE ABSENCE OF A COMPLETE AND ACCURATE TITLE SEARCH AND DOES NOT GUARANTEE TITLE.



INDEXED ON MAP
3525 10P

SURVEYED BY:
William K. Bruce
WILLIAM K. BRUCE
PROFESSIONAL SURVEYOR 7437
APRIL 25, 2016
COPYRIGHT 2016 BY:
LEE SURVEYING & MAPPING CO
117 North Madriver Street, INC.
BELLEFONTAINE, OHIO 43311
(937) 593-7335
WWW.LSMINC.US
surveys@lsminc.us
ADW D1215 17341215 L-1734-2

4-27-2020



Metes and Bounds Description for Surveyed Parcel:

Situated in the City of Bellefontaine, Township of Lake, County of Logan and State of Ohio: Known as being a part of Section 33, Township 4 East, Range 14 North. Also known as being a part of the 1.512 acre parcel of land and 5.728 acre parcel of land now or formerly conveyed to F&S Associates, LLC as recorded in Official Record Volume 885, Page 964 Tracts One and Three of Logan County Records and being more particularly described as follows:

Commencing at a "MAG" Nail found at the centerline intersection of Kent Drive and South Main Street (a.k.a. U.S. Route 68, 85' R/W.); thence along said centerline of South Main Street North 02°26'56" West 44.34 feet to a point; thence North 87°32'55" East 42.50 feet to a 3/4" rebar with a 2" diameter Aluminum Cap ODOT Monument marked R/W, found on the East Right-of-Way Line of said South Main Street; thence along said East Right-of-Way line of South Main Street North 02°27'13" West 132.65 feet to a 3/4" rebar with a 2" diameter Aluminum Cap ODOT Monument marked R/W, found at the Southwest corner of a 0.665 acre parcel of land, now or formerly conveyed in the name of O'Reilly Auto Enterprises, LLC, as per Official Record Volume 1144, Page 915 of Logan County Records; thence along the South line of said O'Reilly parcel South 84°26'31" East 199.56 feet to a 5/8" rebar x 30" in length with Plastic Cap Stamped "NORTHROP OH PLS 8199" set at the Southeast corner of said O'Reilly parcel and being the Point of Beginning;

thence along the East line of said O'Reilly parcel North 04°27'39" West 149.61 feet to a 5/8" rebar x 30" in length with Plastic Cap Stamped "NORTHROP OH PLS 8199" set at the Northeast corner thereof and the South line of a 3.062 acre parcel of land, now or formerly conveyed to Buck & Buck Enterprises LLC as per Official Record Volume 928, page 445 of Logan County Records;

thence South 84°31'24" East 67.04 feet along the South line of said Buck & Buck parcel to a railroad spike found;

thence, crossing through said F&S Associates, LLC 5.728 acre parcel of land, South 04°38'52" West 147.44 feet to a 5/8" rebar x 30" in length with Plastic Cap Stamped "NORTHROP OH PLS 8199" set;

thence along the North line of a 0.896 acre parcel of land conveyed to Bellchip, LLC in official Record Volume 1348, page 46, North 84°26'31" West 43.35 feet to the Point of Beginning, containing 0.187 acres (8135 Sq. Feet), more or less, as surveyed by Edward E. Northrop, Ohio Professional Surveyor No. S-8199, for and on behalf of Titan USA Commercial Real Estate Services, LLC under Project No. 350, and is subject to all legal highways, easements and restrictions of record. 0.128 acre is all of the remainder of the 1.512 acre parcel of land and 0.059 acre is part of the 5.728 acre parcel of Land.

The Basis of Bearings for all bearings described herein is the Ohio State Plane Coordinate System (FIPS Zone3401), on the North American Datum of 1983 (2011). GPS observations were used to establish a bearing of South 84°31'24" East, as the North line of the subject property.

Edward E. Northrop

Digitally signed by
Edward E Northrop
Date: 2020.04.27
11:57:20 -04'00'



Edward E. Northrop
Ohio Registered Professional Land Surveyor No. S-8199
Date: February 17, 2020
Revised: April 17, 2020



Corporate office:
233 South Patterson, Springfield, Mo 65802
Phone : (417) 862-2674 Fax: (417) 874-7119



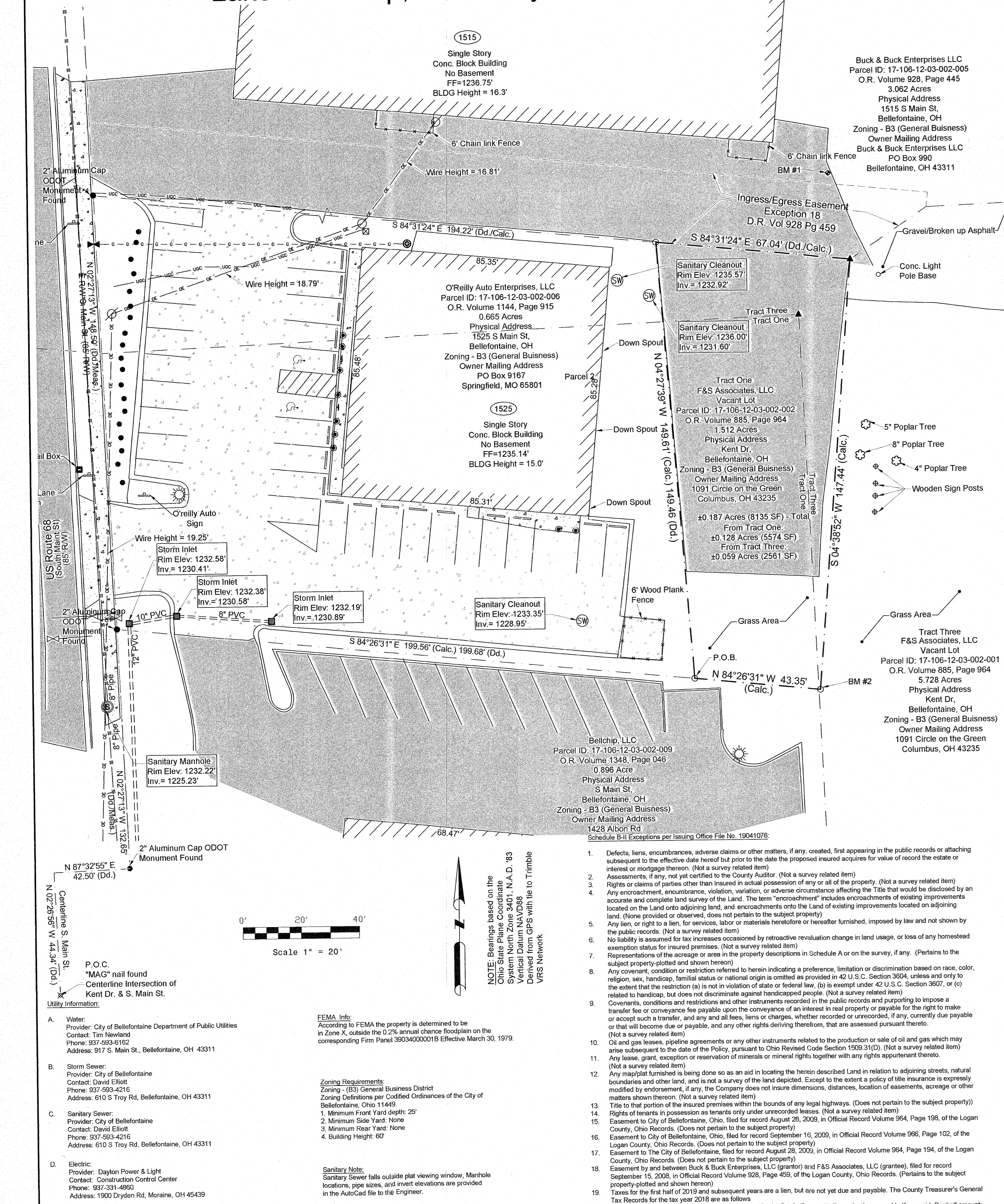
306 North Market Street
Mt. Carmel, Illinois 62863
Phone: (618) 263-4100

www.neikirkengineering.com



ALTA/NSPS

Part of Section 33, Township 4 East, Range 14 North, Lake Township, in the City of Bellefontaine, Logan County, OH



Water: City of Bellefontaine Department of Public Utilities... Storm Sewer: City of Bellefontaine... Sanitary Sewer: City of Bellefontaine... Electric: Dayton Power & Light...

NOTE: Bearings based on the Ohio State Plane Coordinate System... Scale 1" = 20'

1. Defects, liens, encumbrances, adverse claims or other matters, if any, created, first appearing in the public records... 2. Assessments, if any, not yet certified to the County Auditor...

Parent Property Recorded Boundary Description: Parcel 1: (Tract One) Lying in section 33, Town 4, Range 14, Lake Township, City of Bellefontaine, Logan County, Ohio...

Beginning at a MAG nail set at the intersection of centerlines of South Main Street (U.S. Route 60) feet wide, and Kent Drive (60 feet wide), THENCE, with the centerline of South Main Street, North 4 deg. 04' 00" West, a distance of 30.28 feet to a point...

EXCEPTING THEREFROM THE FOLLOWING: Situated in the State of Ohio, County of Logan, Township of Lake, City of Bellefontaine, and being in Section 33, Township 4, Range 14, between the Mains and being part of a 1.512 acre tract (Tract One) and all of a 0.581 acre tract (Tract Four) as conveyed to F & S Associates, LLC, Official Record 885, Page 964, and being more particularly described as follows:

Being a parcel of land lying on the right side of the centerline of right-of-way of LOG-88-5-92 made by E.P. Ferris & Associates, Inc. as recorded in Highway Book 1, Page 121 of the records of Logan County, and being located within the following described points in the boundary thereof...

Bearings are based on English Ground Coordinates converted from the Ohio State Plane Coordinate System, North Zone, NAD 83 (96 Ad.), Control for bearings are for GMS and 63, provided by ODOT (LOG-88-5-45, PID 19663, State Job No. 471210), having a bearing of North 12 degrees 32 minutes 14 seconds East.

ALSO EXCEPTING THEREFROM THE FOLLOWING: Situated in the City of Bellefontaine, Lake Township, County of Logan, State of Ohio. And being a part of Section 33, Township 4, Range 14, and being part of Original Tract of Land 1.512 acres previously conveyed in the name of F & S Associates, LLC, Official Record 885, Page 964, Tract One of the Logan County Records, being more particularly described as follows:

Beginning at a MAG Nail set at the intersection of centerlines of South Main Street (U.S. Route 60) feet wide, and Kent Drive (60 feet wide), THENCE, with the centerline of South Main Street, North 02 deg. 28' 36" West, a distance of 44.34 feet to a point. THENCE, at right angles to said centerline, North 87 deg. 31' 24" East, a distance of 42.50 feet to a 2" diameter Aluminum ODOT Monument marked RM, found on the East Right-of-Way Line, found at the intersection of said Right-of-Way Line, North 02 deg. 28' 36" West, BEGGINNING of said Parcel and being the northwest corner of Cross Point Condominiums (Flat Cabinet A, Side 715), THENCE, with the west line of the said Condominiums and said Cabinet A, Side 715-A) East, a distance of 966.81 feet to a 5/8 inch iron rod set, THENCE, with the north right-of-way of Kent Drive (60 feet wide), North 86 deg. 12' 00" East, a distance of 35.32 feet to a 5/8 inch iron rod set, THENCE, with a curve to the right having a central angle of 33 deg. 47' 42", a radius of 220.00 feet, an arc length of 128.16 feet, a distance of 35.32 feet to a 5/8 inch iron rod set, THENCE, with a curve to the left having a central angle of 7 deg. 43' 32", a radius of 280.00 feet, an arc length of 37.75 feet, with a chord bearing North 51 deg. 24' 16" West, a distance of 37.73 feet to a 5/8 inch iron rod set, THENCE, North 04 deg. 04' 00" West, a distance of 325.00 feet to a railroad spike set, THENCE, South 85 deg. 56' 00" West, a distance of 240.00 feet to a 5/8 inch iron rod set, THENCE, North 04 deg. 04' 00" West, a distance of 275.21 feet to the point of beginning, Containing 5.728 acres.

PARCEL 2: (Tract Three) Lying in Section 33, Town 4, Range 14, Lake Township, City of Bellefontaine, Logan County, Ohio: Being out of the John C. Graham and Hazel J. Graham Revocable Trust dated January 30, 1999, 8.342 acre tract and 0.748 acre tract as deeded and described in Official Record 421, Page 151, Parcels One and Two and being more particularly described as follows:

Commencing on a MAG nail set at the intersection of the centerlines of Clarkson Avenue and South Main Street, THENCE, with the centerline of South Main Street, North 04 deg. 04' 00" West, a distance of 562.62 feet to a point. THENCE, with the north line of The City of Bellefontaine, Ohio, 0.683 acre tract (O.R. 900, Pg. 315), South 86 deg. 09' 22" East, a distance of 42.31 feet to a 5/8 inch iron rod set on the east right-of-way of South Main Street at the TRUE POINT OF BEGINNING, passing a concrete monument found at 30.30 feet; THENCE, with the lines of the Hillcrest Baptist Church of Bellefontaine, Ohio, 2.00 acre tract (Vol. 315, Pg. 93), the following two courses: South 86 deg. 09' 22" East, a distance of 282.39 feet to a 5/8 inch iron rod set, North 04 deg. 18' 51" East, a distance of 288.63 feet to a 5/8 inch iron rod set, THENCE, with the south line of the Hillcrest Baptist Church of Bellefontaine, Ohio, 1.222 acre tract (O.R. 73, Pg. 67), South 86 deg. 26' 58" East, a distance of 120.71 feet to a 5/8 inch iron rod set, THENCE, with the south line of the Hillcrest Baptist Church of Bellefontaine, Ohio, 1.222 acre tract (O.R. 73, Pg. 67), South 86 deg. 26' 58" East, a distance of 120.71 feet to a 5/8 inch iron rod set, THENCE, with the west line of the said Condominiums and said Cabinet A, Side 715-A) East, a distance of 966.81 feet to a 5/8 inch iron rod set, THENCE, with the north right-of-way of Kent Drive (60 feet wide), North 86 deg. 12' 00" East, a distance of 35.32 feet to a 5/8 inch iron rod set, THENCE, with a curve to the right having a central angle of 33 deg. 47' 42", a radius of 220.00 feet, an arc length of 128.16 feet, a distance of 35.32 feet to a 5/8 inch iron rod set, THENCE, with a curve to the left having a central angle of 7 deg. 43' 32", a radius of 280.00 feet, an arc length of 37.75 feet, with a chord bearing North 51 deg. 24' 16" West, a distance of 37.73 feet to a 5/8 inch iron rod set, THENCE, North 04 deg. 04' 00" West, a distance of 325.00 feet to a railroad spike set, THENCE, South 85 deg. 56' 00" West, a distance of 240.00 feet to a 5/8 inch iron rod set, THENCE, North 04 deg. 04' 00" West, a distance of 275.21 feet to the point of beginning, Containing 5.728 acres.

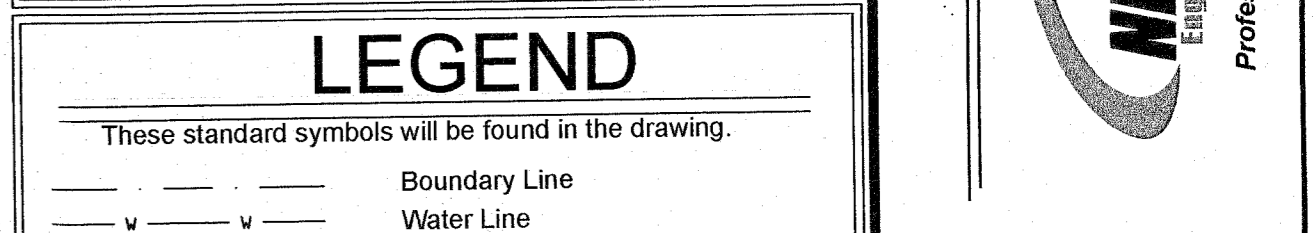
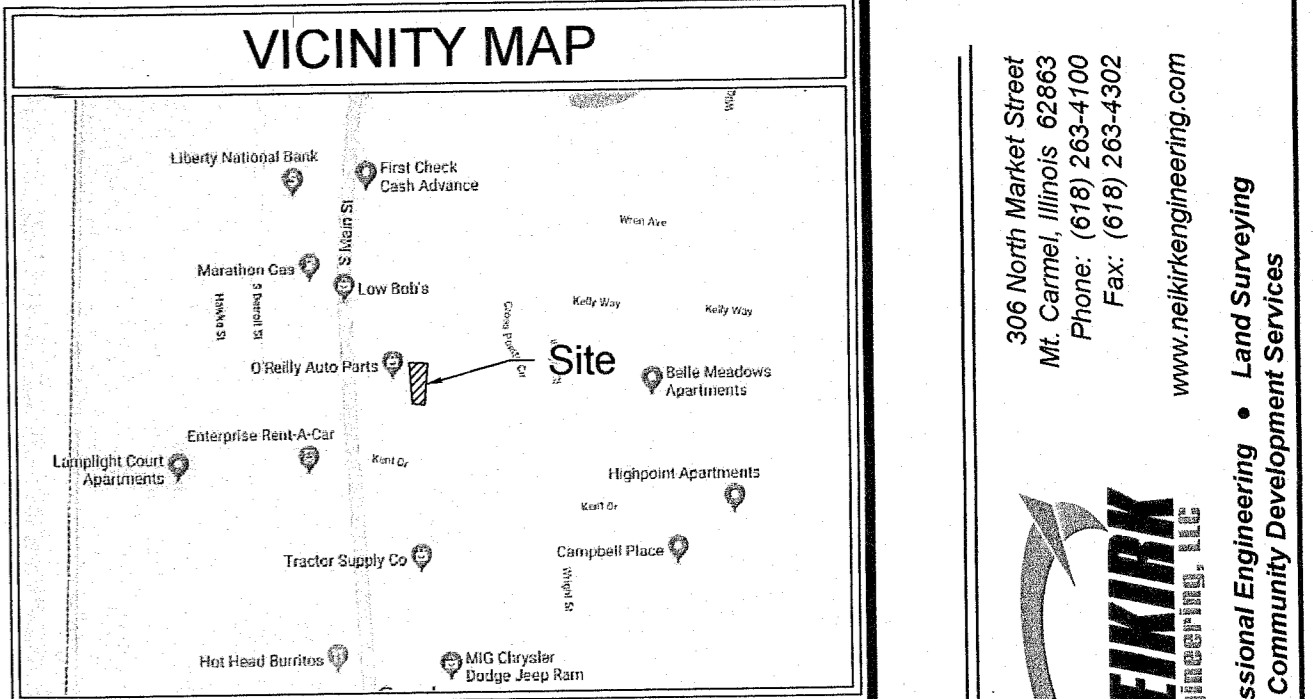
EXCEPTING THEREFROM THE FOLLOWING PARCEL: Lying in Section 33, Town 4, Range 14, City of Bellefontaine, Lake Township, Logan County, Ohio: Being out of the F & S Associates, LLC 5.728 acre tract as deeded and described in Official Record 885, Page 964, Tract Three of The Logan County Records of Deeds and being more particularly described as follows:

Commencing on a MAG Nail found at the centerline intersection of Kent Drive and South Main Street (a.k.a. U.S. Route 60), 85' 2" wide, THENCE, along said centerline of South Main Street North 02 deg. 28' 36" West, a distance of 44.34 feet to a point, THENCE, North 87 deg. 31' 24" East, a distance of 42.50 feet to a 2" diameter Aluminum ODOT Monument marked RM, found on the East Right-of-Way Line, found at the intersection of said Right-of-Way Line, North 02 deg. 28' 36" West, BEGGINNING of said Parcel and being the northwest corner of Cross Point Condominiums (Flat Cabinet A, Side 715), THENCE, with the west line of the said Condominiums and said Cabinet A, Side 715-A) East, a distance of 966.81 feet to a 5/8 inch iron rod set, THENCE, with the north right-of-way of Kent Drive (60 feet wide), North 86 deg. 12' 00" East, a distance of 35.32 feet to a 5/8 inch iron rod set, THENCE, with a curve to the right having a central angle of 33 deg. 47' 42", a radius of 220.00 feet, an arc length of 128.16 feet, a distance of 35.32 feet to a 5/8 inch iron rod set, THENCE, with a curve to the left having a central angle of 7 deg. 43' 32", a radius of 280.00 feet, an arc length of 37.75 feet, with a chord bearing North 51 deg. 24' 16" West, a distance of 37.73 feet to a 5/8 inch iron rod set, THENCE, North 04 deg. 04' 00" West, a distance of 325.00 feet to a railroad spike set, THENCE, South 85 deg. 56' 00" West, a distance of 240.00 feet to a 5/8 inch iron rod set, THENCE, North 04 deg. 04' 00" West, a distance of 275.21 feet to the point of beginning, Containing 5.728 acres.

Metes and Bounds Description for Surveyed Parcel: Situated in the City of Bellefontaine, Township of Lake, County of Logan and State of Ohio: Known as being a part of Section 33, Township 4 East, Range 14 North. Also known as being a part of the 1.512 acre parcel of land and 5.728 acre parcel of land now formerly conveyed to F&S Associates, LLC as recorded in Official Record Volume 885, Page 964 Tracts One and Three of Logan County Records and being more particularly described as follows:

Commencing at a "MAG" Nail found at the centerline intersection of Kent Drive and South Main Street (a.k.a. U.S. Route 60), 85' 2" wide, THENCE, along said centerline of South Main Street North 02 deg. 28' 36" West, a distance of 44.34 feet to a point, THENCE, North 87 deg. 31' 24" East, a distance of 42.50 feet to a 2" diameter Aluminum ODOT Monument marked RM, found on the East Right-of-Way Line, found at the intersection of said Right-of-Way Line, North 02 deg. 28' 36" West, BEGGINNING of said Parcel and being the northwest corner of Cross Point Condominiums (Flat Cabinet A, Side 715), THENCE, with the west line of the said Condominiums and said Cabinet A, Side 715-A) East, a distance of 966.81 feet to a 5/8 inch iron rod set, THENCE, with the north right-of-way of Kent Drive (60 feet wide), North 86 deg. 12' 00" East, a distance of 35.32 feet to a 5/8 inch iron rod set, THENCE, with a curve to the right having a central angle of 33 deg. 47' 42", a radius of 220.00 feet, an arc length of 128.16 feet, a distance of 35.32 feet to a 5/8 inch iron rod set, THENCE, with a curve to the left having a central angle of 7 deg. 43' 32", a radius of 280.00 feet, an arc length of 37.75 feet, with a chord bearing North 51 deg. 24' 16" West, a distance of 37.73 feet to a 5/8 inch iron rod set, THENCE, North 04 deg. 04' 00" West, a distance of 325.00 feet to a railroad spike set, THENCE, South 85 deg. 56' 00" West, a distance of 240.00 feet to a 5/8 inch iron rod set, THENCE, North 04 deg. 04' 00" West, a distance of 275.21 feet to the point of beginning, Containing 5.728 acres.

The Basis of Bearings for this survey is Grid North of the Ohio State Plane Coordinate System (FIPS Zone 3401), on the North American Datum of 1983 (2011). GPS observations were used to establish a bearing of South 84°31'24" E, for the North line of the subject property.



REVISIONS DATE table with entries for 2/12/2020 and 4/17/2020.

Existing Conditions Survey, Bellefontaine, Logan County, Ohio

O'Reilly Auto Enterprises, LLC, 1525 S Main St, Bellefontaine, OH

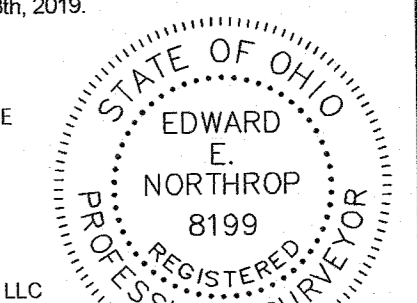
- Notes: 1. All utilities drawn are based on locations marked in the field by O.U.P.S. ticket #A9318032300A. Locations determined from field observations. 2. Property lines within city limits of Bellefontaine, Ohio. No Water or Gas Lines were observed or shown. 3. BM #1 (MAG Nail in pavement, derived from GPS with tie to Trimble VRS Network. Elevation = 1233.63' BM #2: Iron pin, Southeast corner of property, derived from GPS with tie to Trimble VRS Network. Elevation = 1233.02' 4. This survey is based on Chicago Title Insurance Company Policy No. 19041076 with an effective date of November 14, 2019 as per 6/5/9 AM. 5. No Encroachments were observed. 6. There were no designated parking stalls observed on subject property. 7. The plat of survey prepared by me entitled "ALTA/NSPS" is actually made upon the ground and that the information, courses and distances shown thereon are correct. 8. The title lines and lines of actual possession are the same. 9. The size, location and type of buildings and improvements are as shown and all are within the boundary lines of the length of the lot. 10. There are no violations of zoning ordinances, restrictions or other rules and regulations with reference to the location of said buildings and improvements. 11. There are no discrepancies, conflicts, shortages in area or boundary line, corners, easements, encroachments, driveways, cemeteries, burial grounds or uses affecting this property appearing from a careful physical inspection of the same, other than those shown and depicted thereon. 12. This property has access to the street via ingress/egress/easement, Volume 928, page 459, (Exception 18). 13. All utility services required for the operation of the property either enter the property through adjoining public streets or the survey shows the point of entry and location of any utilities that pass through or are on adjoining private land.

To: O'Reilly Auto Enterprises, LLC, a Delaware limited liability company; Meridian Title Corporation; and Chicago Title Insurance Company.

This is to certify that this map or plat and the survey on which it is based were made in accordance with the 2016 Minimum Standard Detail Requirements for ALTA/NSPS Land Title Surveys, jointly promulgated and adopted by ALTA and NSPS, and includes items 1, 2, 3, 4, 5, 7(b)(9)(c), 8, 9, 11, 13 and 16 of Table A thereto. The field work was completed on November 18th, 2019.

Date of Plat or Map: February 17, 2020. Revised April 17, 2020. Digitally signed by Edward E. Northrop Date: 2020.04.17 11:44:13 -0400

Edward E. Northrop Ohio Registered Professional Land Surveyor No. S-8199 For and on behalf of Titan USA Commercial Real Estate Services, LLC



Basis of Bearing: The Basis of Bearing for this survey is Grid North of the Ohio State Plane Coordinate System (FIPS Zone 3401), on the North American Datum of 1983 (2011). GPS observations were used to establish a bearing of South 84°31'24" E, for the North line of the subject property.

INDEXED ON MAP 3/2/20

DWG DATE: 02/17/2020 SHEET #: 1 OF 1 SHEETS

SV1 O'REILLY-BELLEFONTAINE.DWG