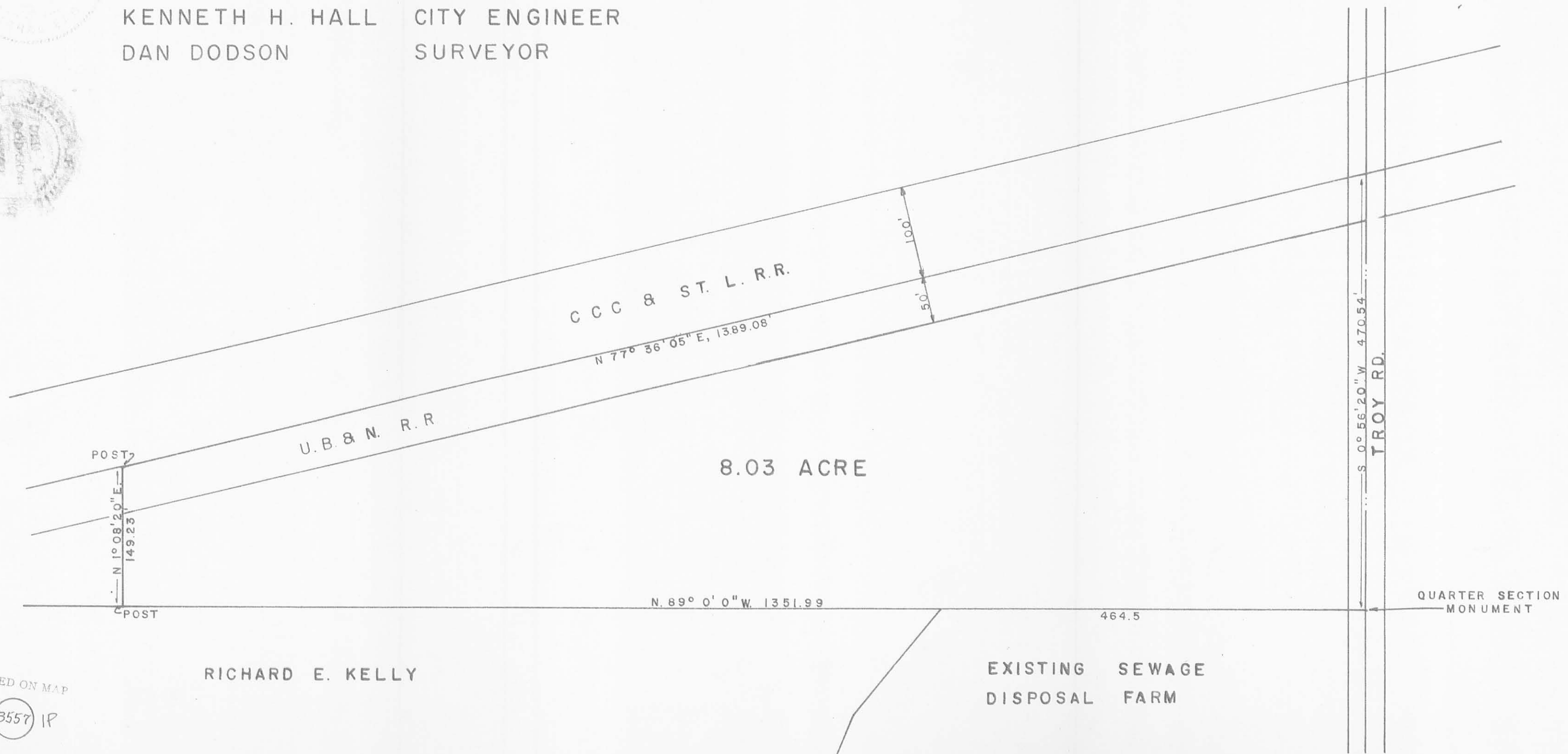


SURVEY OF ADDITION TO SEWAGE DISPOSAL FARM
 FOR THE CITY OF BELLEFONTAINE, OHIO
 S.4 T.3 R.14 B.M.R.S. — HARRISON TOWNSHIP
 AUGUST 16, 1962 SCALE 1" = 100'

F.M. BAXLEY CHIEF UTILITIES ENGINEER
 KENNETH H. HALL CITY ENGINEER
 DAN DODSON SURVEYOR



8.03 ACRE

RICHARD E. KELLY

EXISTING SEWAGE
 DISPOSAL FARM

INDEXED ON MAP
 (3557) IP