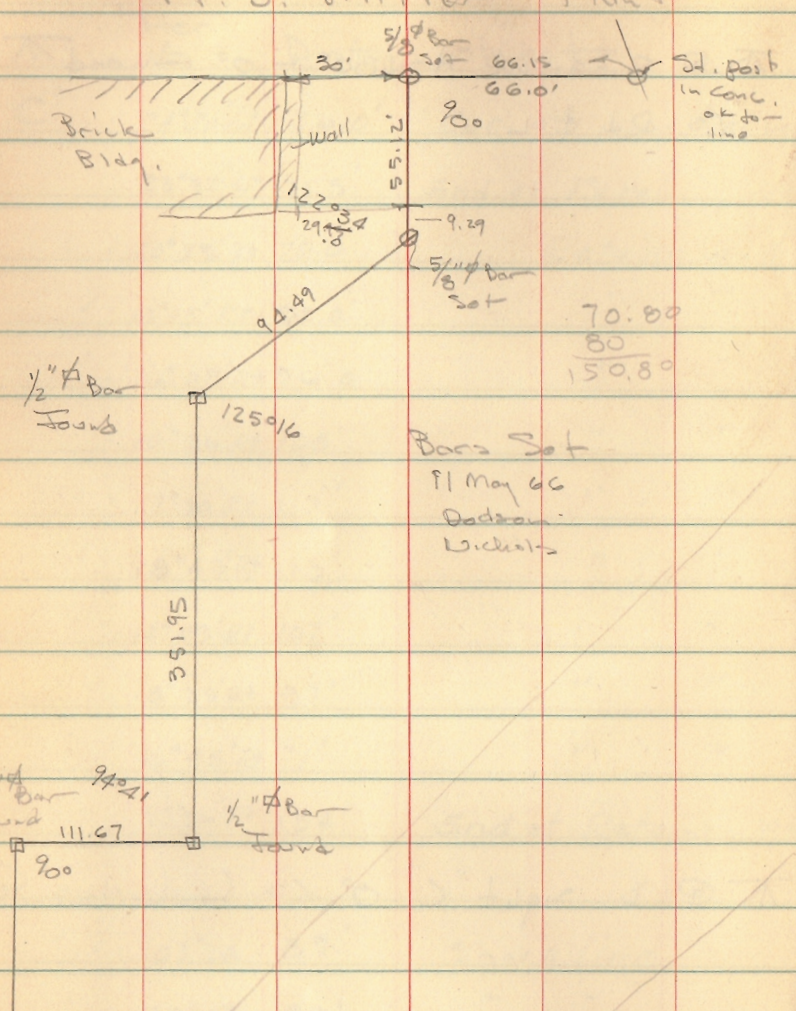


A. J. Miller Plot

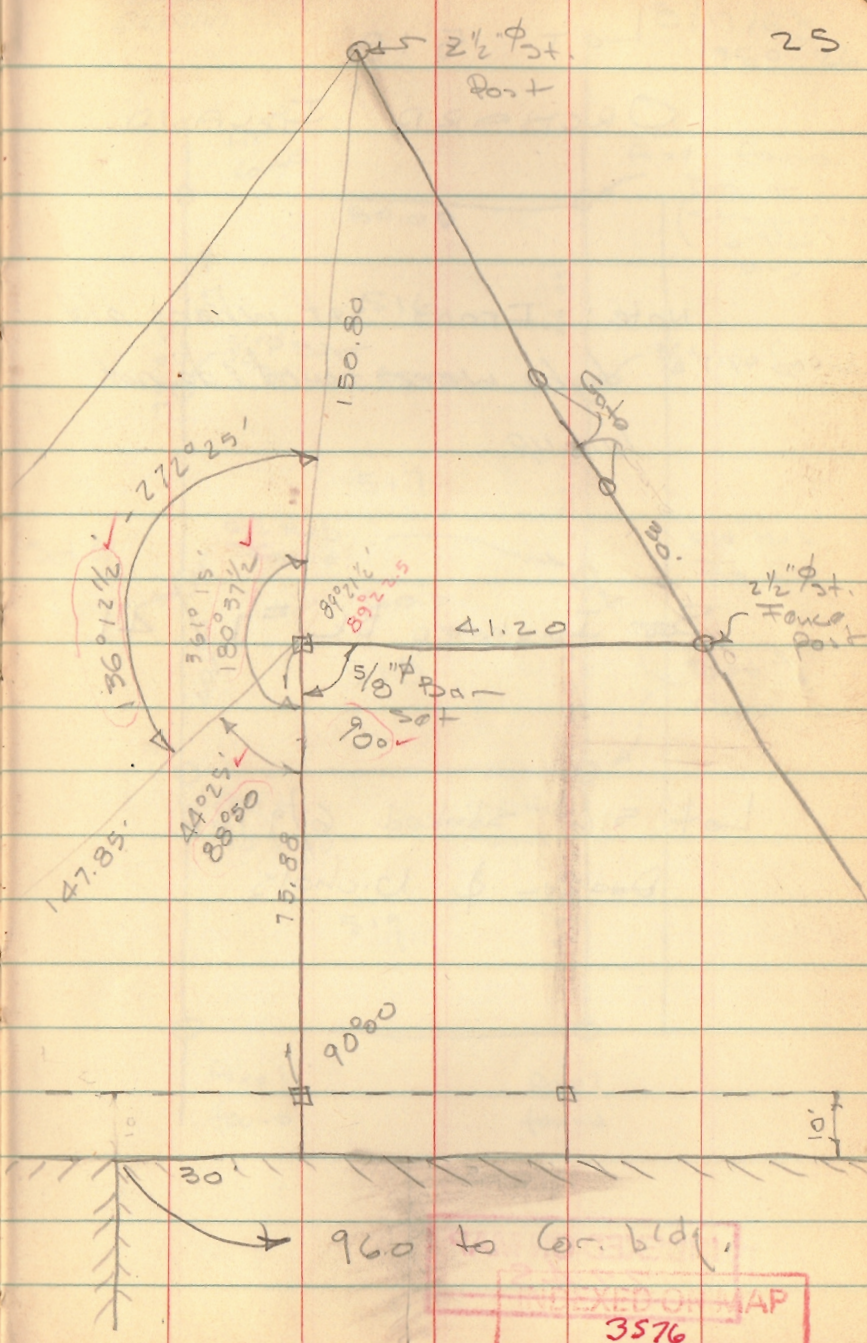
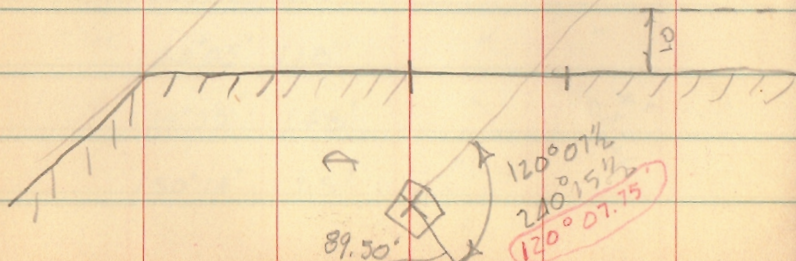
25



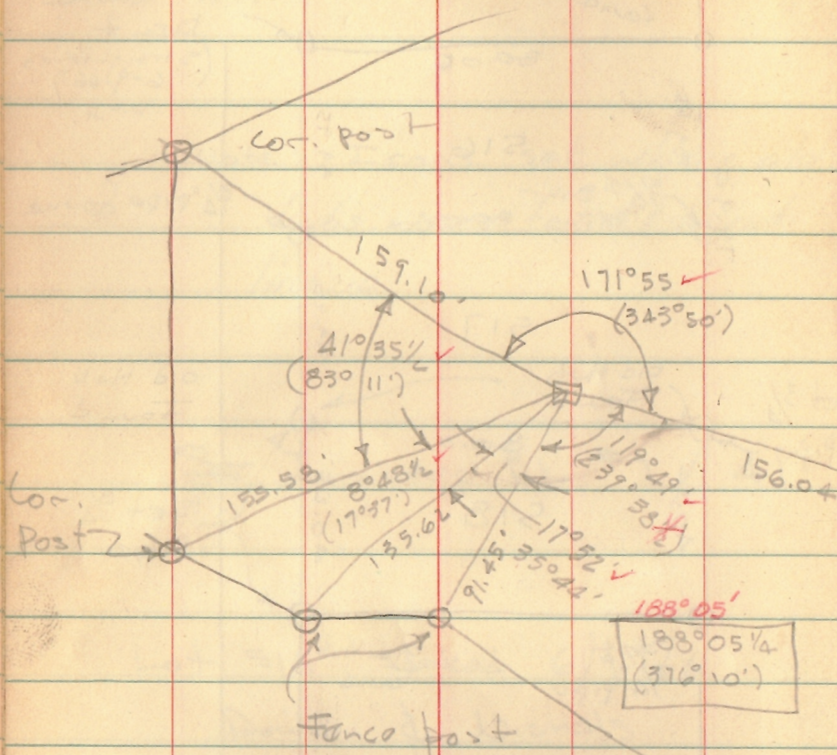
Bars Set
 11 May 66
 Dadson
 Wickham

70:80
 80
 150.80

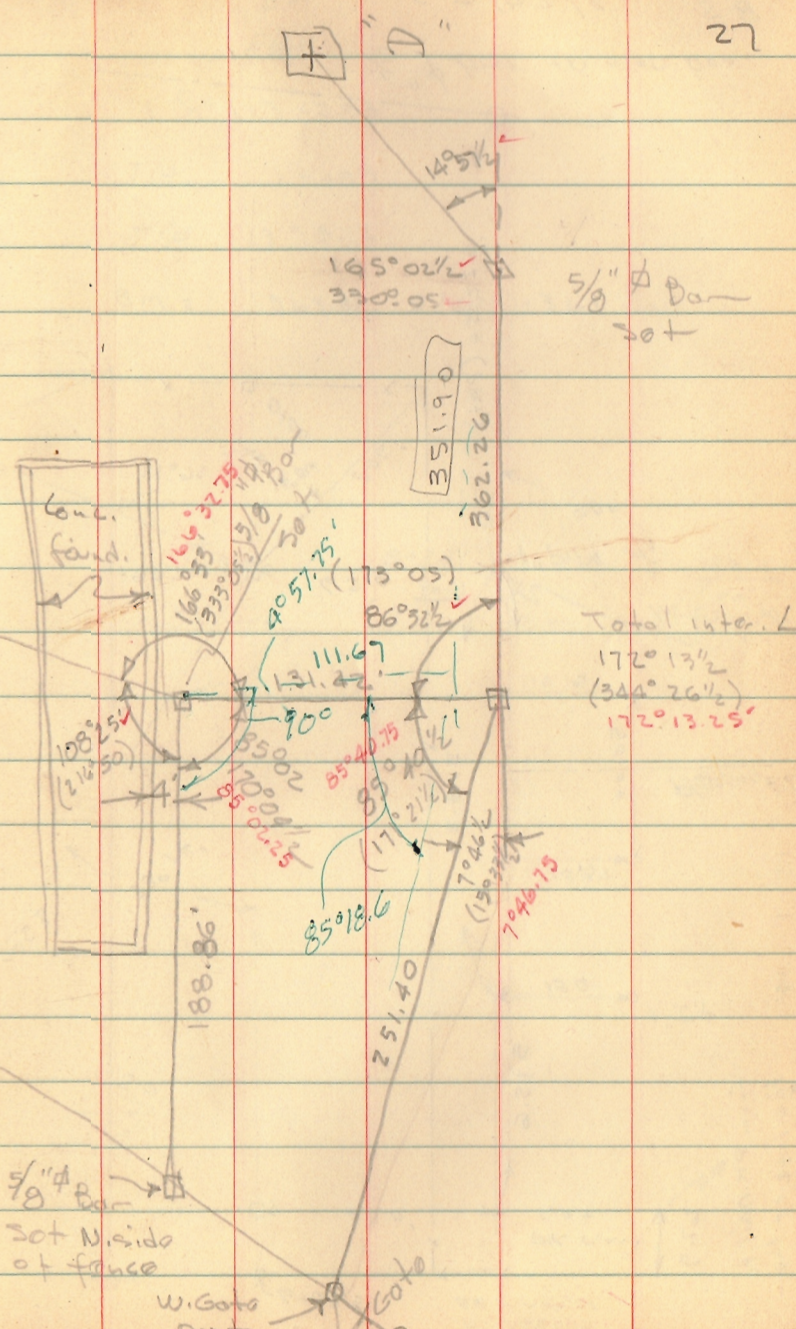
1/2" Bar Found 94.41
 111.67
 90°
 1/2" Bar Found



960 to Cor. bldg.
 INDEXED ON MAP
 3576

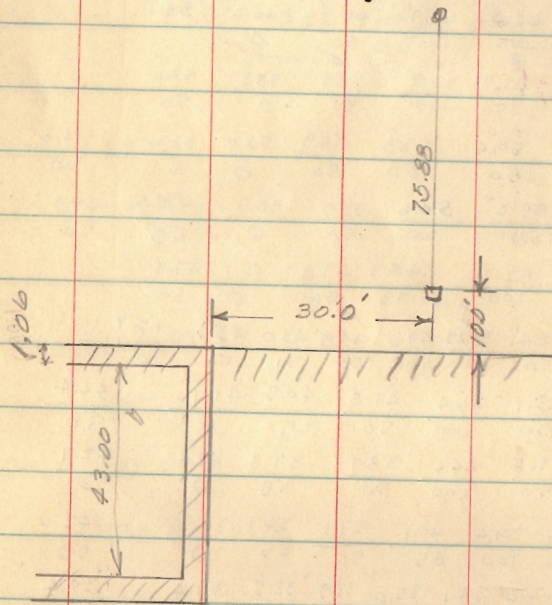


INDEXED ON MAP
3576



Total Inter. \angle
172° 13 1/2'
(344° 26 1/2')
172° 13.25'

A J Miller Plant (cont.)



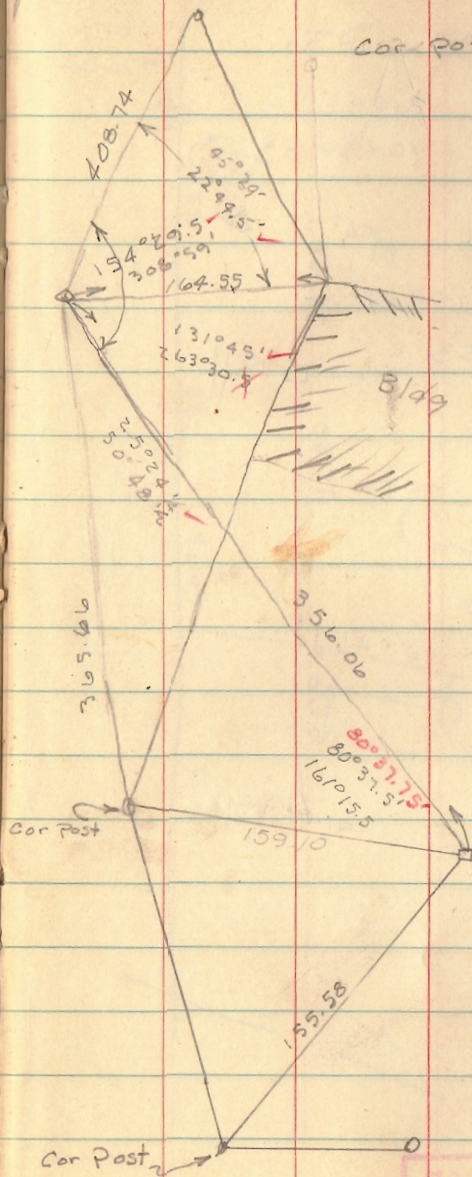
INDEXED ON MAP
3576

8-29-63

Geaslin Westbay 20

Car Post

Time 2 1/2 Hrs

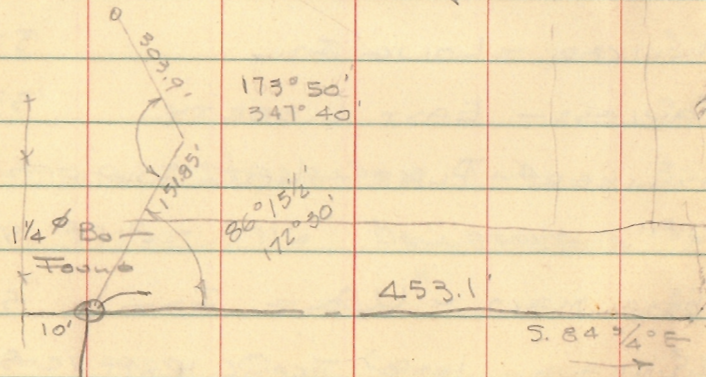


INDEXED ON MAP
3576

S.E. Cor. of A.J.M. Hart Property

⊥ @ "A" right "B" ↙ ↘ RT & L.

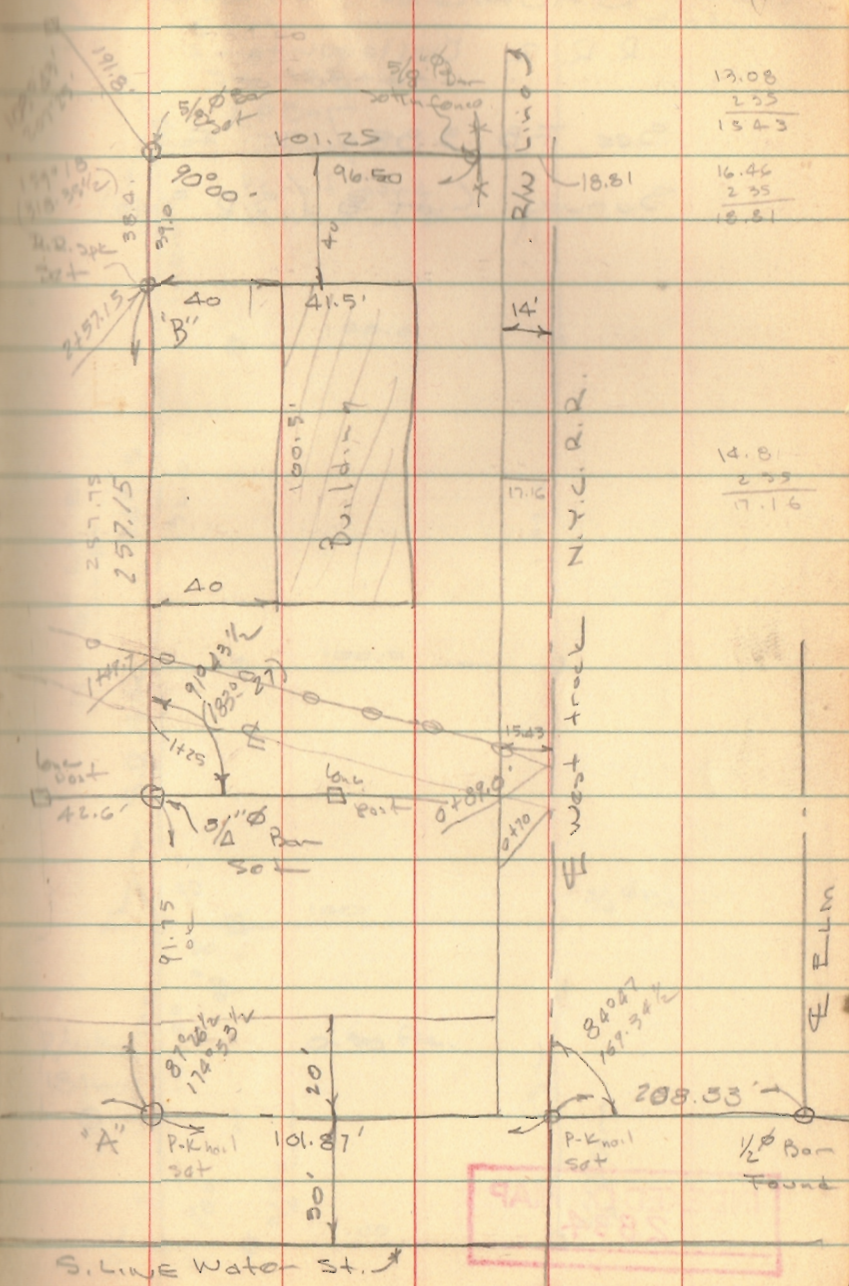
Horiz	Dist	Object
24° 36' LT	102'	10" \square Conc. post (R?)
17° 29' LT	153'	S.E. cor Bridge
16° 12' LT	168'	N.E. " "
21° 19' LT	188'	N.W. " "
22° 58' LT	171'	S.W. " "
25° 49' RT	100'	10" \square Conc. Post @ S. edge stream
49° 15' RT	108'	10" \square Conc. Post @ " "
52° 42' RT	116'	Sw. br. br. @ R.R.
48° 53' RT	123'	N.W. " " "
41° 49' RT	134'	2" ϕ steel Conc. post



INDEXED ON MAP
35 76

Dodson
G. Geallie

1/11/64
20°



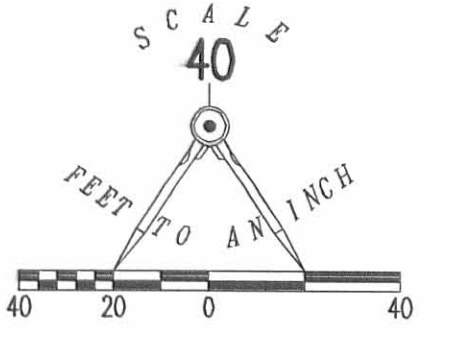
13.08
2.35
13.43
16.46
2.35
18.81

14.81
2.35
17.16

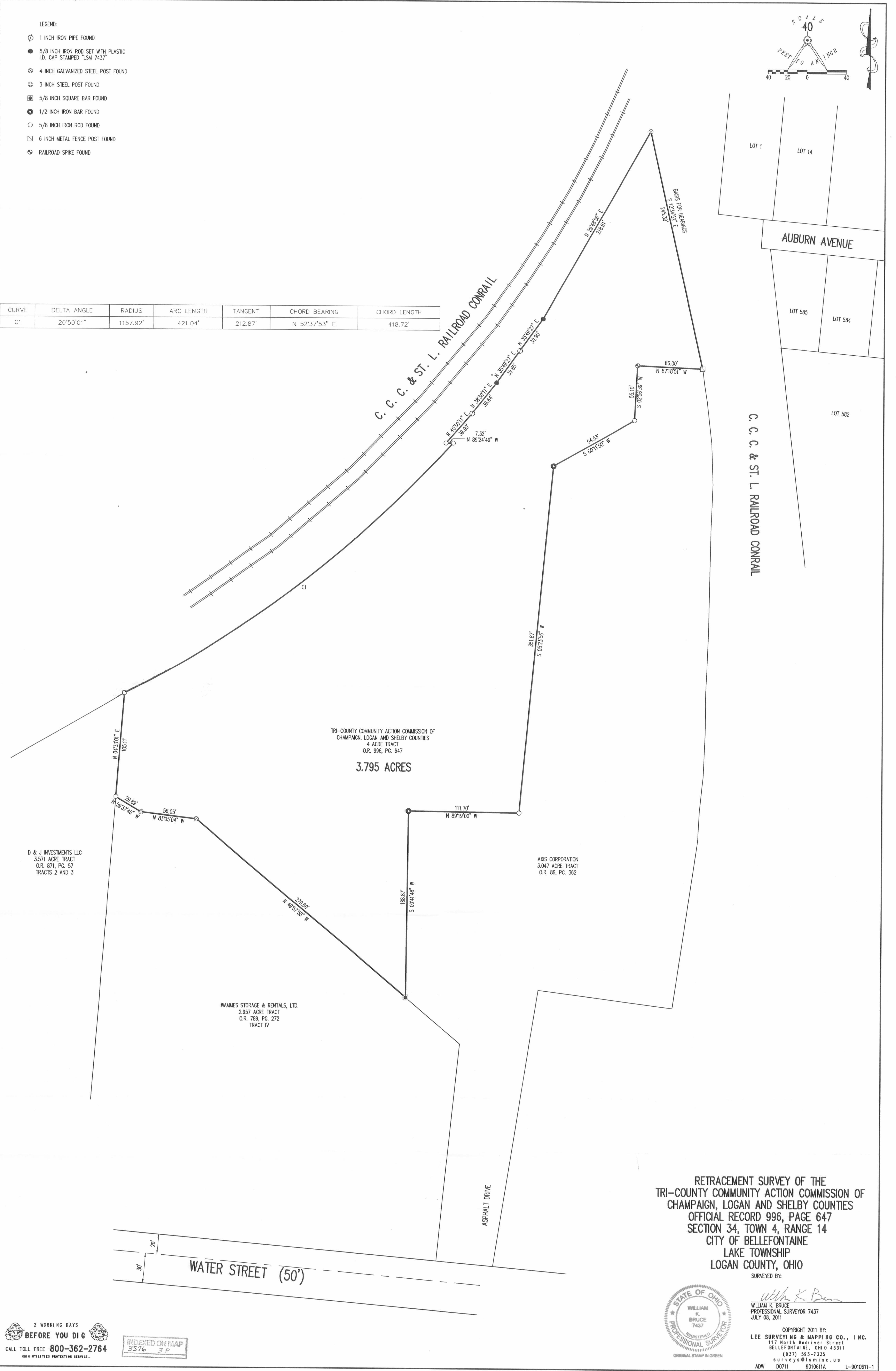
INDEXED ON MAP
35 76

LEGEND:

- 1 INCH IRON PIPE FOUND
- 5/8 INCH IRON ROD SET WITH PLASTIC I.D. CAP STAMPED "LSM 7437"
- ⊗ 4 INCH GALVANIZED STEEL POST FOUND
- ⊙ 3 INCH STEEL POST FOUND
- 5/8 INCH SQUARE BAR FOUND
- 1/2 INCH IRON BAR FOUND
- 5/8 INCH IRON ROD FOUND
- ⊠ 6 INCH METAL FENCE POST FOUND
- ⦿ RAILROAD SPIKE FOUND



CURVE	DELTA ANGLE	RADIUS	ARC LENGTH	TANGENT	CHORD BEARING	CHORD LENGTH
C1	20°50'01"	1157.92'	421.04'	212.87'	N 52°37'53" E	418.72'



TRI-COUNTY COMMUNITY ACTION COMMISSION OF
 CHAMPAIGN, LOGAN AND SHELBY COUNTIES
 4 ACRE TRACT
 O.R. 996, PG. 647
3.795 ACRES

D & J INVESTMENTS LLC
 3.571 ACRE TRACT
 O.R. 871, PG. 57
 TRACTS 2 AND 3

WAMMES STORAGE & RENTALS, LTD.
 2.957 ACRE TRACT
 O.R. 788, PG. 272
 TRACT IV

AXIS CORPORATION
 3.047 ACRE TRACT
 O.R. 86, PG. 362

RETRACEMENT SURVEY OF THE
 TRI-COUNTY COMMUNITY ACTION COMMISSION OF
 CHAMPAIGN, LOGAN AND SHELBY COUNTIES
 OFFICIAL RECORD 996, PAGE 647
 SECTION 34, TOWN 4, RANGE 14
 CITY OF BELLEFONTAINE
 LAKE TOWNSHIP
 LOGAN COUNTY, OHIO

SURVEYED BY:

William K. Bruce
 WILLIAM K. BRUCE
 PROFESSIONAL SURVEYOR 7437
 JULY 08, 2011



COPYRIGHT 2011 BY:
 LEE SURVEYING & MAPPING CO., INC.
 117 North Madriver Street
 BELLEFONTAINE, OHIO 43311
 (837) 583-7335
 surveys@lisminc.us
 ADW D0711 9010611A L-9010611-1

2 WORKING DAYS
BEFORE YOU DIG
 CALL TOLL FREE 800-362-2764
 OHIO UTILITY PROTECTION SERVICE

INDEXED ON MAP
 3576 3P