

REC'D 1-27-12 smj/ck

Lee Surveying and Mapping Co., Inc.

Land Surveys • Topography • Subdivisions • Construction Layout

117 N. Madriver St.
Bellefontaine OH 43311



Phone: (937) 593-7335
Fax: (937) 593-7444
surveys@lsminc.us

AXIS CORPORATION INGRESS/EGRESS EASEMENT

Lying in Section 34, Town 4, Range 14, City of Bellefontaine, Lake Township, Logan County, Ohio.

Being an ingress/egress easement over a portion of the Axis Corporation 3.047 acre tract as deeded and described in Official Record 86, Page 362 of the Logan County Records of Deeds and being more particularly described as follows:

Commencing on a 1-1/2 inch iron rod found on an angle point on the center-line of Water Street.

THENCE, with the center-line of Water Street (20 feet wide north and 30 feet wide south), S 84°-51'-34"E, a distance of 365.64 feet to a point.

THENCE, N 05°56'-40"E, a distance of 20.09 feet to a 5/8 inch iron rod found on the north right-of-way of Water Street.

THENCE, with the north right-of-way of Water Street and the south line of the aforesaid 3.047 acre tract, S 84°-51'-34"E, a distance of 14.44 feet to a point at the TRUE POINT OF BEGINNING.

THENCE, N 52°-30'-39"E, a distance of 16.40 feet to a point.

THENCE, N 05°-17'-57"E, a distance of 104.08 feet to a point.

THENCE, N 14°-04'-07"E, a distance of 81.47 feet to a point.

THENCE, N 08°-44'-30"E, a distance of 67.48 feet to a point.

THENCE, N06°-54'-53"E, a distance of 109.73 feet to a point.

THENCE, N 14°-13'-42"W, a distance of 32.93 feet to a point.

THENCE, N 40°-24'-11"W, a distance of 71.48 feet to a point on a southerly line of the Tri-County Community Action Commission of Champaign, Logan and Shelby Counties 4 acre tract (O.R. 996, Pg. 647).

THENCE, with the lines of the said 4 acre tract, the following three courses:

S 89°-19'-00"E, a distance of 55.37 feet to a 5/8 inch iron rod found.

N 05°-23'-56"E, a distance of 351.87 feet to a 1/2 inch square iron bar found.

N 60°-11'-50"E, a distance of 64.83 feet to a point.

THENCE, S 49°-19'-53"W, a distance of 23.60 feet to a point.

THENCE, S 38°-26'-36"W, a distance of 37.70 feet to a point.

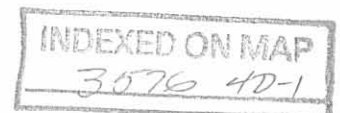
THENCE, S 16°-30'-35"W, a distance of 49.33 feet to a point.

THENCE, S 05°-57'-27"W, a distance of 47.29 feet to a point.

THENCE, S 05°-08'-48"W, a distance of 55.70 feet to a point.

THENCE, S 00°-45'-17"W, a distance of 56.85 feet to a point.

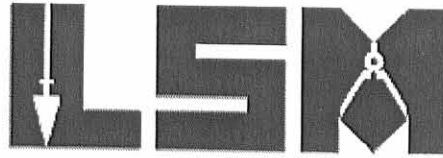
THENCE, S03°-28'-29"E, a distance of 51.66 feet to a point.



Lee Surveying and Mapping Co., Inc.

Land Surveys • Topography • Subdivisions • Construction Layout

117 N. Madriver St.
Bellefontaine OH 43311



Phone: (937) 593-7335
Fax: (937) 593-7444
surveys@lsminc.us

THENCE, S 02°-10'-35"W, a distance of 23.32 feet to a point.

THENCE, S 04°-46'-03"W, a distance of 93.69 feet to a point.

THENCE, S 04°-27'-39"W, a distance of 55.87 feet to a point.

THENCE, S 06°-05'-16"W, a distance of 53.69 feet to a point.

THENCE, S 08°-26'-53"W, a distance of 104.70 feet to a point.

THENCE, S 12°-07'-50"W, a distance of 99.51 feet to a point.

THENCE, S 02°-54'-55"W, a distance of 39.59 feet to a point.

THENCE, S 01°-49'-08"E, a distance of 19.75 feet to a point on the west line of the Todd Lamb 0.34 acre tract (O.R. 1043, Pg. 358, Parcel One, Tract II).

THENCE, with the west line of the said 0.34 acre tract, S 05°-06'-41"W, a distance of 50.61 feet to a 5/8 inch iron rod found on the north right-of-way of Water Street.

THENCE, with the north line of Water Street, N 84°-51'-34"W, a distance of 32.55 feet to the point of beginning.

Property is subject to any and all previous easements and rights-of-way of record.

The basis for bearings is the center-line of Water Street, being S 84°-51'-34"E, and all other bearings are from angles and distances measured in a field survey by Lee Surveying and Mapping Co., Inc. on September 27, 2011.

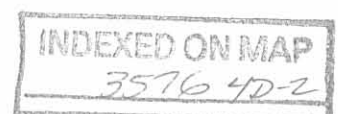
Description prepared by:

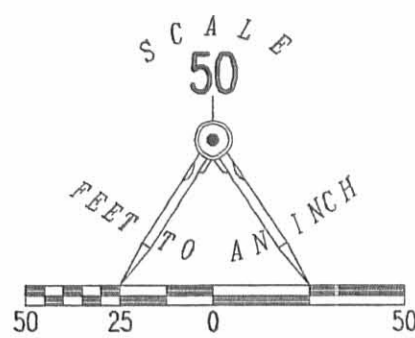
William K. Bruce
Professional Surveyor 7437
January 25, 2012



ORIGINAL STAMP IN GREEN

9010112





LEGEND:

- ⊗ 1-1/2 INCH IRON ROD FOUND
- 5/8 INCH IRON ROD FOUND
- 1/2 INCH SQUARE IRON BAR FOUND
- × POINT

LINE	BEARING	DISTANCE
L1	S 84°51'34" E	14.44'
L2	N 52°30'39" E	16.40'
L3	N 05°17'57" E	104.08'
L4	N 14°04'07" E	81.47'
L5	N 08°44'30" E	67.48'
L6	N 06°54'53" E	109.73'
L7	N 14°13'42" W	32.93'
L8	N 40°24'11" W	71.48'
L9	S 49°19'53" W	23.60'
L10	S 38°26'36" W	37.70'
L11	S 16°30'35" W	49.33'
L12	S 05°57'27" W	47.29'
L13	S 05°08'48" W	55.70'
L14	S 00°45'17" W	56.85'
L15	S 03°28'29" E	51.66'
L16	S 02°10'35" W	23.32'
L17	S 04°46'03" W	93.69'
L18	S 04°27'39" W	55.87'
L19	S 06°05'16" W	53.69'
L20	S 08°26'53" W	104.70'
L21	S 12°07'50" W	99.51'
L22	S 02°54'55" W	39.59'
L23	S 01°49'08" E	19.75'
L24	N 84°51'34" W	32.55'

TRI-COUNTY COMMUNITY ACTION
COMMISSION OF CHAMPAIGN, LOGAN AND
SHELBY COUNTIES
4 ACRES
O.R. 996, PG. 647

WAMMES STORAGE & RENTALS, LTD.
2.957 ACRES
O.R. 789, PG. 272
TRACT IV

AXIS CORPORATION
3.047 ACRES
O.R. 86, PG. 362

INGRESS/EGRESS
EASEMENT

ASPHALT
DRIVE

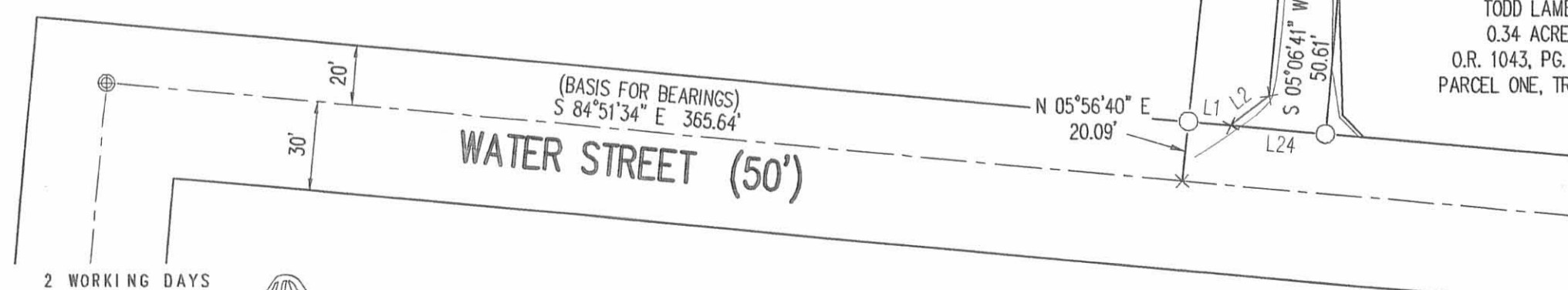
**SURVEY OF AN INGRESS/EGRESS EASEMENT
OVER A PORTION OF THE
AXIS CORPORATION
3.047 ACRE TRACT
OFFICIAL RECORD 86, PAGE 362
SECTION 34, TOWN 4, RANGE 14
CITY OF BELLEFONTAINE
LAKE TOWNSHIP
LOGAN COUNTY, OHIO**

PREPARED BY:

William K. Bruce
WILLIAM K. BRUCE
PROFESSIONAL SURVEYOR 7437
JANUARY 25, 2012
(LAST DAY OF FIELD WORK SEPTEMBER 27, 2011)



COPYRIGHT 2012 BY:
LEE SURVEYING & MAPPING CO
117 North Madriver Street, INC.
BELLEFONTAINE, OHIO 43311
(937) 593-7335
WWW.LSMINC.US
surveys@lsminc.us
KSS D0112 9010112 L-901-2



2 WORKING DAYS
BEFORE YOU DIG
CALL TOLL FREE **800-362-2764**
OHIO UTILITIES PROTECTION SERVICE

INDEXED ON MAP
35710 41

REC'D 1-27-12 smj/ck

Lee Surveying and Mapping Co., Inc.

Land Surveys • Topography • Subdivisions • Construction Layout

117 N. Madriver St.
Bellefontaine OH 43311



Phone: (937) 593-7335
Fax: (937) 593-7444
surveys@lsminc.us

AXIS CORPORATION INGRESS/EGRESS EASEMENT

Lying in Section 34, Town 4, Range 14, City of Bellefontaine, Lake Township, Logan County, Ohio.

Being an ingress/egress easement over a portion of the Axis Corporation 3.047 acre tract as deeded and described in Official Record 86, Page 362 of the Logan County Records of Deeds and being more particularly described as follows:

Commencing on a 1-1/2 inch iron rod found on an angle point on the center-line of Water Street.

THENCE, with the center-line of Water Street (20 feet wide north and 30 feet wide south), S 84°-51'-34"E, a distance of 365.64 feet to a point.

THENCE, N 05°56'-40"E, a distance of 20.09 feet to a 5/8 inch iron rod found on the north right-of-way of Water Street.

THENCE, with the north right-of-way of Water Street and the south line of the aforesaid 3.047 acre tract, S 84°-51'-34"E, a distance of 14.44 feet to a point at the TRUE POINT OF BEGINNING.

THENCE, N 52°-30'-39"E, a distance of 16.40 feet to a point.

THENCE, N 05°-17'-57"E, a distance of 104.08 feet to a point.

THENCE, N 14°-04'-07"E, a distance of 81.47 feet to a point.

THENCE, N 08°-44'-30"E, a distance of 67.48 feet to a point.

THENCE, N06°-54'-53"E, a distance of 109.73 feet to a point.

THENCE, N 14°-13'-42"W, a distance of 32.93 feet to a point.

THENCE, N 40°-24'-11"W, a distance of 71.48 feet to a point on a southerly line of the Tri-County Community Action Commission of Champaign, Logan and Shelby Counties 4 acre tract (O.R. 996, Pg. 647).

THENCE, with the lines of the said 4 acre tract, the following three courses:

S 89°-19'-00"E, a distance of 55.37 feet to a 5/8 inch iron rod found.

N 05°-23'-56"E, a distance of 351.87 feet to a 1/2 inch square iron bar found.

N 60°-11'-50"E, a distance of 64.83 feet to a point.

THENCE, S 49°-19'-53"W, a distance of 23.60 feet to a point.

THENCE, S 38°-26'-36"W, a distance of 37.70 feet to a point.

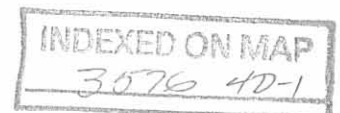
THENCE, S 16°-30'-35"W, a distance of 49.33 feet to a point.

THENCE, S 05°-57'-27"W, a distance of 47.29 feet to a point.

THENCE, S 05°-08'-48"W, a distance of 55.70 feet to a point.

THENCE, S 00°-45'-17"W, a distance of 56.85 feet to a point.

THENCE, S03°-28'-29"E, a distance of 51.66 feet to a point.



REC'D 4-4-12 SMM OK

Lee Surveying and Mapping Co., Inc.

Land Surveys • Topography • Subdivisions • Construction Layout

117 N. Madriver St.
Bellefontaine OH 43311



Phone: (937) 593-7335
Fax: (937) 593-7444
surveys@lsminc.us

TRI-COUNTY COMMUNITY ACTION COMMUNITY ACTION COMMISSION OF CHAMPAIGN, LOGAN AND SHELBY COUNTIES INGRESS/EGRESS EASEMENT #1

Lying in Section 34, Town 4, Range 14, City of Bellefontaine, Lake Township, Logan County, Ohio.

Being an ingress/egress easement over a portion of the Tri-County Community Action Commission of Champaign, Logan and Shelby Counties 4 acre tract as deeded and described in Official Record 996, Page 647 of the Logan County Records of Deeds and being more particularly described as follows:

Commencing on a 1-1/2 inch iron rod found on an angle point on the center-line of Water Street.

THENCE, with the center-line of Water Street (20 feet wide north and 30 feet wide south), S 84°-51'-34"E, a distance of 365.64 feet to a point.

THENCE, with the extension of the westerly line and the westerly lines of the Axis Corporation 3.047 acre tract (O.R. 86, Pg. 362), the following five courses:

N 05°-56'-40"E, a distance of 239.70 feet to a 5/8 inch iron rod found, passing a 5/8 inch iron rod found at 20.09 feet.

N 49°-57'-58"W, a distance of 72.51 feet to a 1/2 inch square iron bar found.

N 00°-41'-48"E, a distance of 188.87 feet to a 1/2 inch square iron bar found.

S 89°-19'-00"E, a distance of 111.70 feet to a 5/8 inch iron rod found.

N 05°-23'-56"E, a distance of 98.10 feet to a point at the TRUE POINT OF BEGINNING.

THENCE, N 54°-56'-50"W, a distance of 17.55 feet to a point.

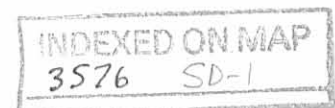
THENCE, N 02°-44'-40"E, a distance of 37.23 feet to a point.

THENCE, N 28°-29'-51"E, a distance of 19.02 feet to a point.

THENCE, N 30°-30'-48"W, a distance of 16.81 feet to a point.

THENCE, N08°-09'-52"E, a distance of 33.84 feet to a point.

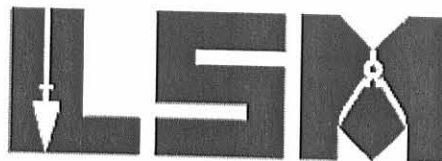
THENCE, N 35°-04'-31"E, a distance of 15.29 feet to a point.



Lee Surveying and Mapping Co., Inc.

Land Surveys • Topography • Subdivisions • Construction Layout

117 N. Madriver St.
Bellefontaine OH 43311



Phone: (937) 593-7335
Fax: (937) 593-7444
surveys@lsminc.us

THENCE, N 06°-11'-34"E, a distance of 63.08 feet to a point.

THENCE, N 13°-28'-05"E, a distance of 46.69 feet to a point.

THENCE, N 18°-28'-34"E, a distance of 12.10 feet to a point on the westerly line of the aforesaid 3.047 acre tract, referenced by a ½ inch square iron bar found bearing N 05°-23'-56"E, a distance of 8.62 feet.

THENCE, with the westerly line of the said 3.047 acre tract, S 05°-23'-56"W, a distance of 245.15 feet to the point of beginning.

Property is subject to any and all previous easements and rights-of-way of record.

The basis for bearings is the center-line of Water Street, being S 84°-51'-34"E, and all other bearings are from angles and distances measured in a field survey by Lee Surveying and Mapping Co., Inc. on September 27, 2011.



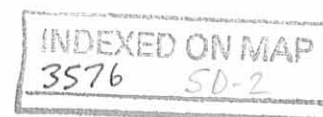
ORIGINAL STAMP IN GREEN

Description prepared by:

A handwritten signature in cursive script that reads 'William K. Bruce'.

William K. Bruce
Professional Surveyor 7437
March 30, 2012

9010312



REV'D 4-4-12 SMY OK

Lee Surveying and Mapping Co., Inc.

Land Surveys • Topography • Subdivisions • Construction Layout

117 N. Madriver St.
Bellefontaine OH 43311



Phone: (937) 593-7335
Fax: (937) 593-7444
surveys@lsminc.us

TRI-COUNTY COMMUNITY ACTION COMMUNITY ACTION COMMISSION OF CHAMPAIGN, LOGAN AND SHELBY COUNTIES INGRESS/EGRESS EASEMENT #2

Lying in Section 34, Town 4, Range 14, City of Bellefontaine, Lake Township, Logan County, Ohio.

Being an ingress/egress easement over a portion of the Tri-County Community Action Commission of Champaign, Logan and Shelby Counties 4 acre tract as deeded and described in Official Record 996, Page 647 of the Logan County Records of Deeds and being more particularly described as follows:

Commencing on a 1-1/2 inch iron rod found on an angle point on the center-line of Water Street.

THENCE, with the center-line of Water Street (20 feet wide north and 30 feet wide south), S 84°-51'-34"E, a distance of 365.64 feet to a point.

THENCE, with the extension of the westerly line and the westerly lines of the Axis Corporation 3.047 acre (O.R. 86, Pg. 362), the following six courses:

N 05°-56'-40"E, a distance of 239.70 feet to a 5/8 inch iron rod found, passing a 5/8 inch iron rod found at 20.09 feet.

N 49°-57'-58"W, a distance of 72.51 feet to a 1/2 inch square iron bar found.

N 00°-41'-48"E, a distance of 188.87 feet to a 1/2 inch square iron bar found.

S 89°-19'-00"E, a distance of 111.70 feet to a 5/8 inch iron rod found.

N 05°-23'-56"E, a distance of 351.87 feet to a 1/2 inch square iron bar found.

N 60°-11'-50"E, a distance of 9.85 feet to a point at the TRUE POINT OF BEGINNING.

THENCE, N 40°-06'-06"E, a distance of 13.01 feet to a point.

THENCE, N 42°-23'-58"E, a distance of 30.76 feet to a point.

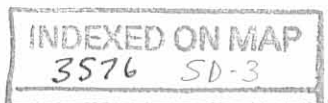
THENCE, N 48°-21'-55"E, a distance of 26.47 feet to a point.

THENCE, N 32°-28'-03"E, a distance of 12.43 feet to a point.

THENCE, N12°-50'-59"E, a distance of 23.95 feet to a point.

THENCE, N 02°-15'-09"W, a distance of 51.33 feet to a point.

THENCE, N 03°-19'-46"E, a distance of 35.70 feet to a point.



Lee Surveying and Mapping Co., Inc.

Land Surveys • Topography • Subdivisions • Construction Layout

117 N. Madriver St.
Bellefontaine OH 43311



Phone: (937) 593-7335
Fax: (937) 593-7444
surveys@lsminc.us

THENCE, N 18°-00'-37"E, a distance of 28.01 feet to a point.

THENCE, N 41°-26'-49"E, a distance of 29.21 feet to a point.

THENCE, N 76°-15'-00"E, a distance of 24.67 feet to a point on the westerly line of the aforesaid 3.047 acre tract.

THENCE, with the westerly line of the said 3.047 acre tract, S 12°-34'-52"E, a distance of 15.93 feet to a point, referenced by a 6 inch metal fence post found bearing S 12°-34'-52"E, a distance of 118.68 feet.

THENCE, S 76°-15'-00"W, a distance of 19.35 feet to a point.

THENCE, S 41°-26'-49"W, a distance of 20.91 feet to a point.

THENCE, S 18°-00'-37"W, a distance of 22.65 feet to a point.

THENCE, S 03°-19'-46"W, a distance of 32.85 feet to a point.

THENCE, S 02°-12'-42"E, a distance of 38.16 feet to a railroad spike found.

THENCE, with the lines of the said 3.047 acre tract, the following two courses:

S 02°-56'-39"W, a distance of 55.10 feet to a 5/8 inch iron rod found.

S 60°-11'-50"W, a distance of 84.68 feet to the point of beginning.

Property is subject to any and all previous easements and rights-of-way of record.

The basis for bearings is the center-line of Water Street, being S 84°-51'-34"E, and all other bearings are from angles and distances measured in a field survey by Lee Surveying and Mapping Co., Inc. on September 27, 2011.



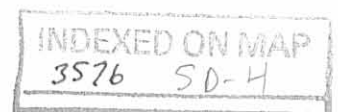
ORIGINAL STAMP IN GREEN

Description prepared by:

A handwritten signature in cursive script that reads 'William K. Bruce'.

William K. Bruce
Professional Surveyor 7437
March 30, 2012

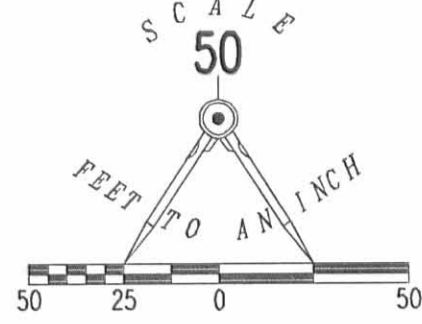
9010312



REC'D 4-4-12 smjau

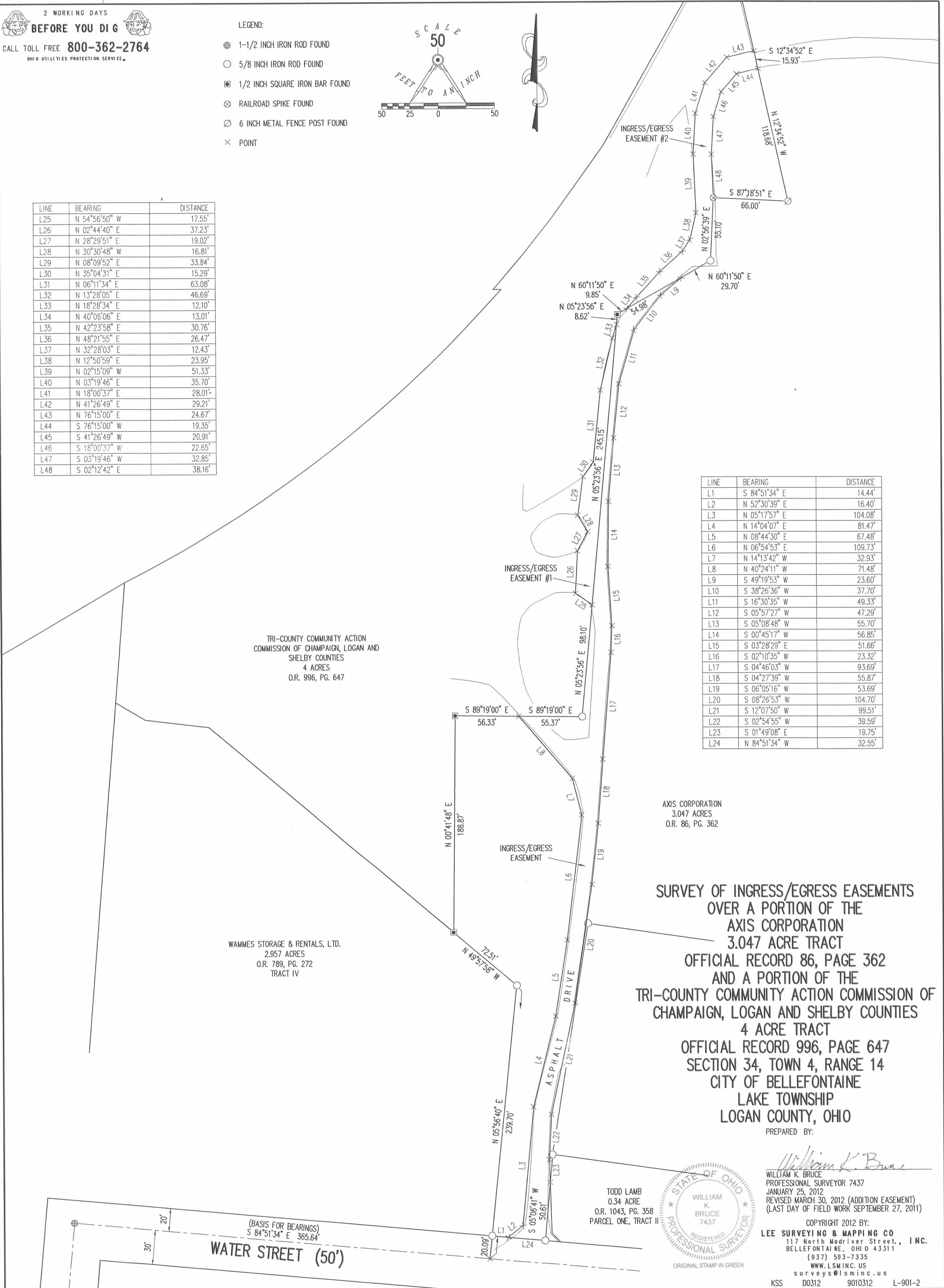
2 WORKING DAYS
BEFORE YOU DIG
 CALL TOLL FREE **800-362-2764**
 OHIO UTILITIES PROTECTION SERVICE

- LEGEND:
- ⊕ 1-1/2 INCH IRON ROD FOUND
 - 5/8 INCH IRON ROD FOUND
 - 1/2 INCH SQUARE IRON BAR FOUND
 - ⊗ RAILROAD SPIKE FOUND
 - ⊘ 6 INCH METAL FENCE POST FOUND
 - × POINT



LINE	BEARING	DISTANCE
L25	N 54°56'50" W	17.55'
L26	N 02°44'40" E	37.23'
L27	N 28°29'51" E	19.02'
L28	N 30°30'48" W	16.81'
L29	N 08°09'52" E	33.84'
L30	N 35°04'31" E	15.29'
L31	N 06°11'34" E	63.08'
L32	N 13°28'05" E	46.69'
L33	N 18°28'34" E	12.10'
L34	N 40°06'06" E	13.01'
L35	N 42°23'58" E	30.76'
L36	N 48°21'55" E	26.47'
L37	N 32°28'03" E	12.43'
L38	N 12°50'59" E	23.95'
L39	N 02°15'09" W	51.33'
L40	N 03°19'46" E	35.70'
L41	N 18°00'37" E	28.01'
L42	N 41°26'49" E	29.21'
L43	N 76°15'00" E	24.67'
L44	S 76°15'00" W	19.35'
L45	S 41°26'49" W	20.91'
L46	S 18°00'37" W	22.65'
L47	S 03°19'46" W	32.85'
L48	S 02°12'42" E	38.16'

LINE	BEARING	DISTANCE
L1	S 84°51'34" E	14.44'
L2	N 52°30'39" E	16.40'
L3	N 05°17'57" E	104.08'
L4	N 14°04'07" E	81.47'
L5	N 08°44'30" E	67.48'
L6	N 06°54'53" E	109.73'
L7	N 14°13'42" W	32.93'
L8	N 40°24'11" W	71.48'
L9	S 49°19'53" W	23.60'
L10	S 38°26'36" W	37.70'
L11	S 16°30'35" W	49.33'
L12	S 05°57'27" W	47.29'
L13	S 05°08'48" W	55.70'
L14	S 00°45'17" W	56.85'
L15	S 03°28'29" E	51.66'
L16	S 02°10'35" W	23.32'
L17	S 04°46'03" W	93.69'
L18	S 04°27'39" W	55.87'
L19	S 06°05'16" W	53.69'
L20	S 08°26'53" W	104.70'
L21	S 12°07'50" W	99.51'
L22	S 02°54'55" W	39.59'
L23	S 01°49'08" E	19.75'
L24	N 84°51'34" W	32.55'



TRI-COUNTY COMMUNITY ACTION
 COMMISSION OF CHAMPAIGN, LOGAN AND
 SHELBY COUNTIES
 4 ACRES
 O.R. 996, PG. 647

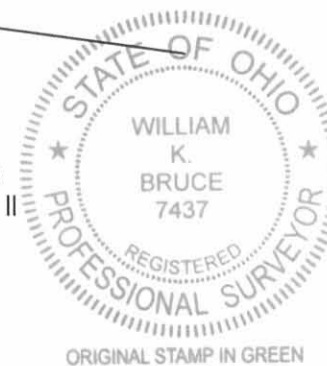
WAMMES STORAGE & RENTALS, LTD.
 2.957 ACRES
 O.R. 789, PG. 272
 TRACT IV

AXIS CORPORATION
 3.047 ACRES
 O.R. 86, PG. 362

**SURVEY OF INGRESS/EGRESS EASEMENTS
 OVER A PORTION OF THE
 AXIS CORPORATION
 3.047 ACRE TRACT
 OFFICIAL RECORD 86, PAGE 362
 AND A PORTION OF THE
 TRI-COUNTY COMMUNITY ACTION COMMISSION OF
 CHAMPAIGN, LOGAN AND SHELBY COUNTIES
 4 ACRE TRACT
 OFFICIAL RECORD 996, PAGE 647
 SECTION 34, TOWN 4, RANGE 14
 CITY OF BELLEFONTAINE
 LAKE TOWNSHIP
 LOGAN COUNTY, OHIO**

PREPARED BY:

William K. Bruce
 WILLIAM K. BRUCE
 PROFESSIONAL SURVEYOR 7437
 JANUARY 25, 2012
 REVISED MARCH 30, 2012 (ADDITION EASEMENT)
 (LAST DAY OF FIELD WORK SEPTEMBER 27, 2011)



COPYRIGHT 2012 BY:
LEE SURVEYING & MAPPING CO.
 117 North Madriver Street., INC.
 BELLEFONTAINE, OHIO 43311
 (937) 593-7335
 WWW.LSMINC.US
 surveys@lsminc.us
 KSS D0312 9010312 L-901-2

INDEXED ON MAP
 3576 SP

2-21-2023



APPROVED



**HOWBERT
SURVEYING**
LLC
8477 MERICLE ROAD
FORT JENNINGS, OHIO 45844
419-863-0289

**Description
For
0.850 Acre
Tract 1**

- Situated in Section 34, Town 4, Range 14, City of Bellefontaine, Lake Township, Logan County, Ohio, being part of a 2.957 acre tract heretofore conveyed to PRO Development, LLC by Official Record Volume 1403, Page 5665 of said County Deed Records and being more particularly described as follows;
- Beginning at the intersection of the north right-of-way line of Water Street (width varies) with the east line of Lot 1081 of Garvins Addition (Plat Cabinet A, Slide 15), being a 5/8" iron pin found;
- Thence along the west line of said 2.957 acre tract and the east line of Lot 1081, the east line of a 3.571 acre tract conveyed to D&J Investments LLC by Official Record Volume 871, Page 57, Tracts 2&3, N.05°11'51"E., a distance of 434.97 feet to a 4" by 7' steel post found;
- Thence running along the north line of said 2.957 acre tract and the south line of a 4.000 acre tract conveyed to the Board of Commissioners of Logan County, Ohio by Official Record Volume 1407, Page 825 on the following three (3) courses and distances:
 1. S.46°00'11"E., a distance of 34.82 feet to a 4" by 7' steel post found;
 2. N.87°55'51"E., a distance of 56.74 feet to a 4" by 7' steel post found;
 3. S.50°06'24"E., a distance of 5.98 feet to a 5/8" iron pin set;
- Thence on a new division line, S.05°11'51"W., a distance of 416.79 feet to a 5/8" iron pin set in the north line of Water Street;
- Thence running along said north line, N.84°53'14"W., a distance of 88.33 feet to the Point of Beginning;
- Containing 0.850 acre, more or less and being subject to all legal highways, rights-of-way, easements, restrictions, covenants, and/or conditions of record.

The above description and bearing system is based on a survey prepared by Michael L. Howbert, Registered Professional Surveyor No. 7959, in March of 2023. The basis of bearing is based on Ohio North State Plane Grid, NAD 83, Adjustment 2011 with the north line of Water Street bearing: N.84°53'14"W .

Michael L. Howbert, P.S.



INDEXED ON MAP
3576

3-31-2023


 APPROVED



Description
For
0.623 Acre
Tract 2

- Situated in Section 34, Town 4, Range 14, City of Bellefontaine, Lake Township, Logan County, Ohio, being part of a 2.957 acre tract heretofore conveyed to PRO Development, LLC by Official Record Volume 1403, Page 5665 of said County Deed Records and being more particularly described as follows;
- Commencing at the intersection of the north right-of-way line of Water Street (width varies) with the east line of Lot 1081 of Garvins Addition (Plat Cabinet A, Slide 15), being a 5/8" iron pin found;
- Thence running along said north line, S.84°53'14"E., a distance of 88.33 feet to a 5/8' iron pin set, being the *Principal Point of Beginning*;
- Thence on a new division line, N.05°11'51"E., a distance of 416.79 feet to a 5/8" iron pin set in the north line of said 2.957 acre tract and the south line of a 4.000 acre tract conveyed to the Board of Commissioners of Logan County, Ohio by Official Record Volume 1407, Page 825;
- Thence running along the north line of said 2.957 acre tract and the south line of said 4.000 acre tract, S.50°06'24"E., a distance of 84.05 feet to a 5/8" iron pin set;
- Thence on a new division line, S.05°11'51"W., a distance of 368.85 feet to a 5/8" iron pin set in the north line of Water Street
- Thence running along said north line, N.84°53'14"W., a distance of 69.10 feet to the Point of Beginning;
- Containing 0.623 acre, more or less and being subject to all legal highways, rights-of-way, easements, restrictions, covenants, and/or conditions of record.

The above description and bearing system is based on a survey prepared by Michael L. Howbert, Registered Professional Surveyor No. 7959, in March of 2023. The basis of bearing is based on Ohio North State Plane Grid, NAD 83, Adjustment 2011 with the north line of Water Street bearing: N.84°53'14"W .


Michael L. Howbert, P.S.




INDEXED ON MAP
3576



**Description
For
0.546 Acre
Tract 3**

- Situated in Section 34, Town 4, Range 14, City of Bellefontaine, Lake Township, Logan County, Ohio, being part of a 2.957 acre tract heretofore conveyed to PRO Development, LLC by Official Record Volume 1403, Page 5665 of said County Deed Records and being more particularly described as follows;
- Commencing at the intersection of the north right-of-way line of Water Street (width varies) with the east line of Lot 1081 of Garvins Addition (Plat Cabinet A, Slide 15), being a 5/8" iron pin found;
- Thence running along said north line, S.84°53'14"E., a distance of 157.43 feet to a 5/8" iron pin set, being the *Principal Point of Beginning*;
- Thence on a new division line, N.05°11'51"E., a distance of 368.85 feet to a 5/8" iron pin set in the north line of said 2.957 acre tract and the south line of a 4.000 acre tract conveyed to the Board of Commissioners of Logan County, Ohio by Official Record Volume 1407, Page 825;
- Thence running along the north line of said 2.957 acre tract and the south line of said 4.000 acre tract, S.50°06'24"E., a distance of 83.83 feet to a 5/8" iron pin set;
- Thence on a new division line, S.05°11'51"W., a distance of 321.03 feet to a 5/8" iron pin set in the north line of Water Street
- Thence running along said north line, N.84°53'14"W., a distance of 68.92 feet to the Point of Beginning;
- Containing 0.546 acre, more or less and being subject to all legal highways, rights-of-way, easements, restrictions, covenants, and/or conditions of record.

The above description and bearing system is based on a survey prepared by Michael L. Howbert, Registered Professional Surveyor No. 7959, in March of 2023. The basis of bearing is based on Ohio North State Plane Grid, NAD 83, Adjustment 2011 with the north line of Water Street bearing: N.84°53'14"W .


Michael L. Howbert, P.S.



INDEXED ON MAP
3576


3-31-2023

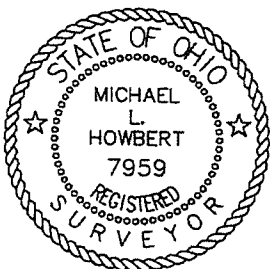


**Description
For
0.900 Acre
Tract 4**

- Situated in Section 34, Town 4, Range 14, City of Bellefontaine, Lake Township, Logan County, Ohio, being part of a 2.957 acre tract heretofore conveyed to PRO Development, LLC by Official Record Volume 1403, Page 5665 of said County Deed Records and being more particularly described as follows;
- Commencing at the intersection of the north right-of-way line of Water Street (width varies) with the east line of Lot 1081 of Garvins Addition (Plat Cabinet A, Slide 15), being a 5/8" iron pin found;
- Thence running along said north line, S.84°53'14"E., a distance of 226.35 feet to a 5/8' iron pin set, being the *Principal Point of Beginning*;
- Thence on a new division line, N.05°11'51"E., a distance of 321.03 feet to a 5/8" iron pin set in the north line of said 2.957 acre tract and the south line of a 4.000 acre tract conveyed to the Board of Commissioners of Logan County, Ohio by Official Record Volume 1407, Page 825;
- Thence running along the north line of said 2.957 acre tract, the south line of said 4.000 acre tract and the south line of a 3.047 acre tract conveyed to Axis Corporation by Official Record Volume 86, Page 362, S.50°06'24"E., a distance of 177.84 feet to a 5/8" iron pin found at the northeast corner of said 2.957 acre tract;
- Thence on the east line of said 2.957 acre tract and the west line of said 3.047 acre tract, S.05°54'51"W., a distance of 219.61 feet to a 1" iron pipe found in the north line of Water Street
- Thence running along said north line, N.84°53'14"W., a distance of 143.47 feet to the Point of Beginning;
- Containing 0.900 acre, more or less and being subject to all legal highways, rights-of-way, easements, restrictions, covenants, and/or conditions of record.

The above description and bearing system is based on a survey prepared by Michael L. Howbert, Registered Professional Surveyor No. 7959, in March of 2023. The basis of bearing is based on Ohio North State Plane Grid, NAD 83, Adjustment 2011 with the north line of Water Street bearing: N.84°53'14"W .


Michael L. Howbert, P.S.



INDEXED ON MAP
3574

3-31-2023

APPROVED

PLAT OF SURVEY FOR PRO DEVELOPMENT

SITUATED IN:
SECTION 34,
TOWN 4, RANGE 14.,
BETWEEN THE MIAMI RIVERS SURVEY
CITY OF BELLEFONTAINE,
LAKE TOWNSHIP,
LOGAN COUNTY, OHIO

D&J INVESTMENTS LLC
O.R. 871, PG. 57
TRACTS 2&3
3.571 ACRES

AXIS CORPORATION
O.R. 86, PG. 362
3.047 ACRES

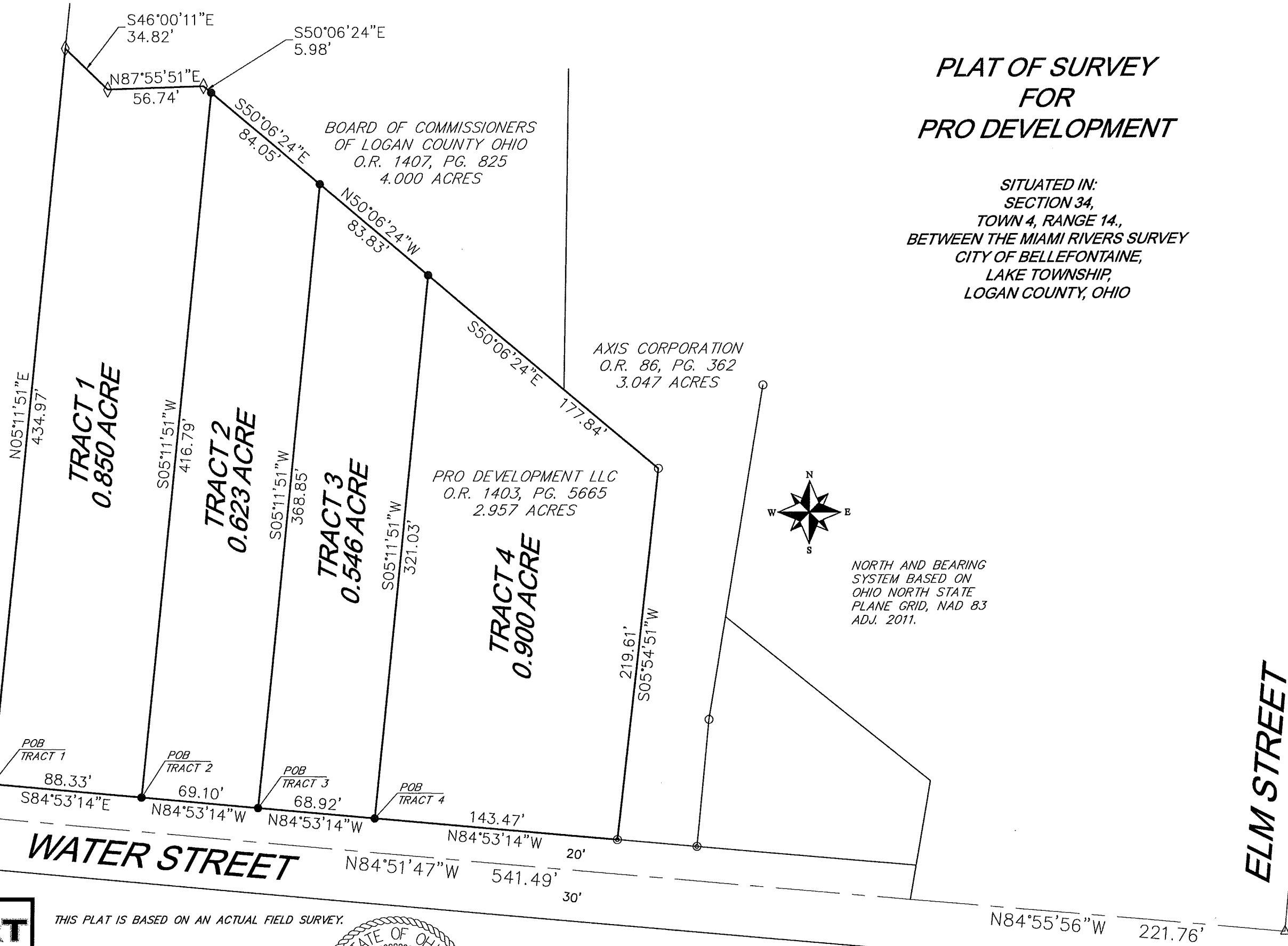
PRO DEVELOPMENT LLC
O.R. 1403, PG. 5665
2.957 ACRES

NORTH AND BEARING
SYSTEM BASED ON
OHIO NORTH STATE
PLANE GRID, NAD 83
ADJ. 2011.

LEGEND:

- △ 3/4" IRON PIN FOUND
- ⊙ 1-1/2" IRON ROD FOUND
- ◇ 4" X 7" POST FOUND
- 5/8" IRON PIN FOUND
- ⊗ 1" IRON PIPE FOUND
- 5/8" IRON PIN W/ CAP SET

GARVINS ADDITION
PLAT CAB. A, SLIDE 15
LOT 1081
D&J INVESTMENTS LLC
O.R. 871, PG. 57
TRACT 4



WATER STREET

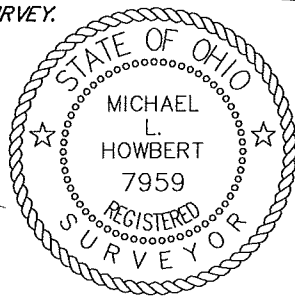
ELM STREET

HOWBERT SURVEYING LLC
8477 MERICLE ROAD
FORT JENNINGS, OHIO 45844
419-863-0289

DATE: 3/31/23	REV.:
CLIENT: ABORGAST	SCALE: 1" = 60'
JOB #: 105-03-23	CHK:

THIS PLAT IS BASED ON AN ACTUAL FIELD SURVEY.

Michael L. Howbert
MICHAEL L. HOWBERT
REGISTERED PROFESSIONAL
SURVEYOR NO. 7959 IN OHIO
MARCH 31, 2023



NOTES:
FOUND MONUMENTATION IN GOOD CONDITION
UNLESS OTHERWISE NOTED.
DATA SOURCES INCLUDE DOCUMENTS CITED.
A TITLE SEARCH IS RECOMMENDED TO DETERMINE
EASEMENTS, RESTRICTIONS, AND/OR OTHER
ENCUMBRANCES AFFECTING THE PROPERTY
SHOWN HEREON.

INDEXED ON MAP
3570

