

SURVEYORS CERTIFICATE

I hereby Certify that the Annexed Plat of real estat in V.M.S. 4399 Lake Township Logan County Ohio is a Correct representation of Property to be Annexed to the City of Bellefontaine Ohio

Foster F. Wright.
Registered Surveyor

ACCEPTANCE

The Annexed Plat was approved and accepted by the Board of County Commissioners at a regular meeting and recorded in Journal Page _____

Commissioners of Logan County

APPROVED

City Engineer

ACCEPTANCE

The Annexed Plat was adopted by Ordance No. _____ as an addition to the City of Bellefontaine Ohio at a regular meeting of City Council on the _____ day of _____

Mayor

Clerk

ACCEPTANCE

Approved by Planning Commission at a meeting held on _____ day of _____

Chairman

AUDITOR OFFICE LOGAN COUNTY OHIO

Transferred this _____ day of _____

Logan County Auditor

RECORDERS OFFICE LOGAN COUNTY OHIO

Received for Record at _____ o'clock _____ day
Recorded in Plat Book _____ Volume _____ Page _____

Recorder of Logan County

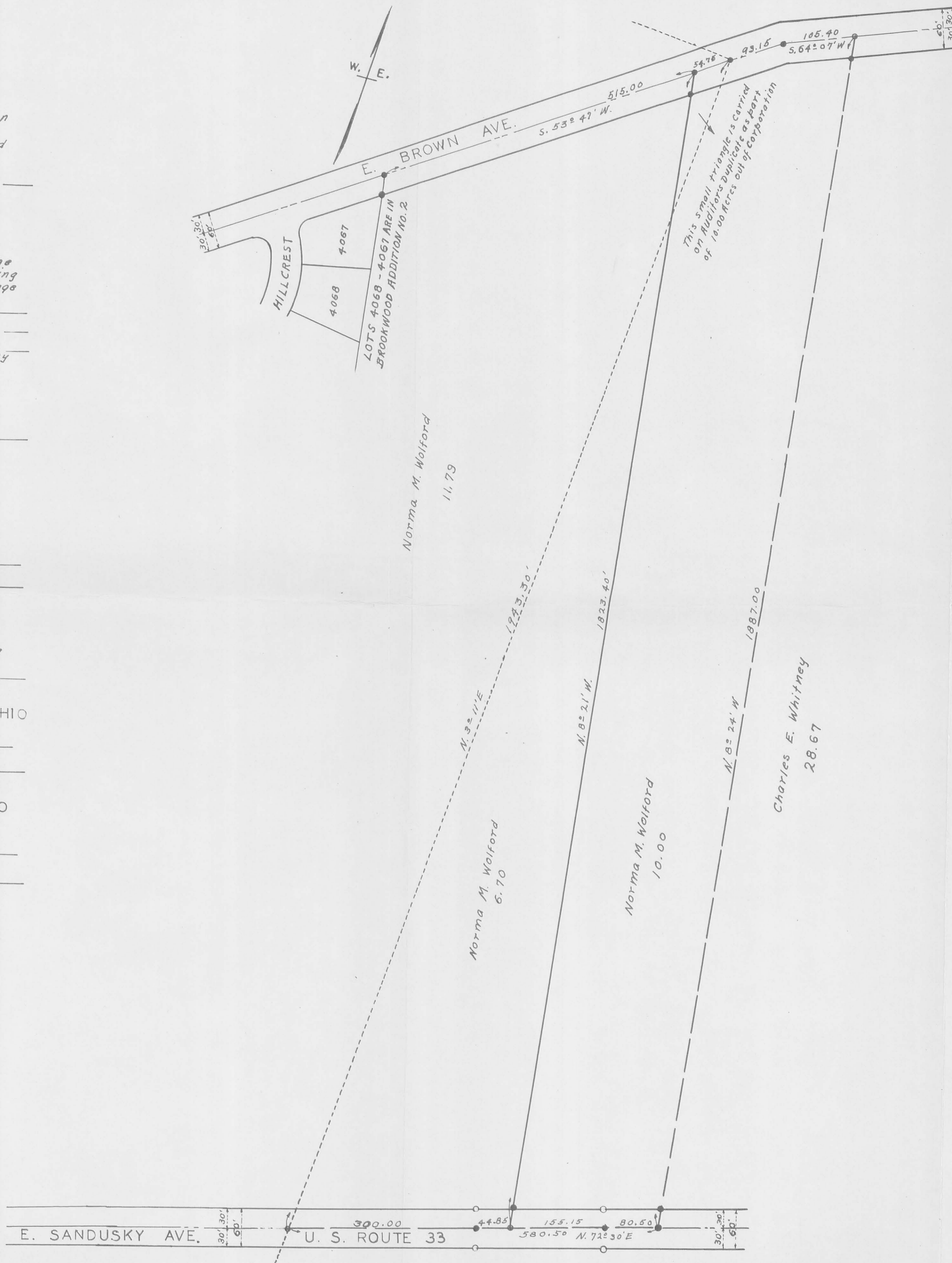
LEGEND

- IRONS
- CONCRETE R. W. POSTS
- PRESENT CORPORATION LINE
- NEW CORPORATION LINE

FILE FW 4-83



INDEXED ON MAP



CORPORATION LINE EXTENSION
BELLEFONTAINE OHIO
E. SANDUSKY AVE. TO E. BROWN AVE.
MARCH 1963

0' 50' 100' 150' 200' 1"=100'

3628 IP

INDEXED ON MAP

Corporation Line Extension E. Sandusky Ave. to E. Brown Ave. Bellefontaine Ohio.
May 1963

The following described land in Lake Township, Logan County, Ohio and being in V.M.S. 4399.

Beginning at an iron in the center of East Brown Ave. at the N.E. corner of Brookwood Addition Number two. Thence with the center line of East Brown Ave. N. 53 - 47 E. 569.75 feet to an iron in the present Corporation Line of Bellefontaine. Said iron being the true beginning point of this survey.

Thence with the present East Corporation Line of Bellefontaine S. 3 - 11 W. 1943.30 feet to an iron in the center of East Sandusky Ave. (U.S.Route Number 33)

Thence with the center line of East Sandusky Ave. (U.S.Route Number 33) N. 72 - 30 E. 580.50 feet to an iron. The last described line passing mid way between two concrete right of way posts at 300.00 feet and also at 500.00 feet.

Thence with the west line of Chas. E. Whitney's 28.67 acre tract N. 8 - 24 W. 1887.00 feet to an iron in the center of East Brown Ave.

Thence with the center line of East Brown Ave. S. 64 - 07 W. 105.40 feet to an iron.

Thence again with the center line of East Brown Ave. S. 53 - 47 W. 93.15 feet to the place of beginning.

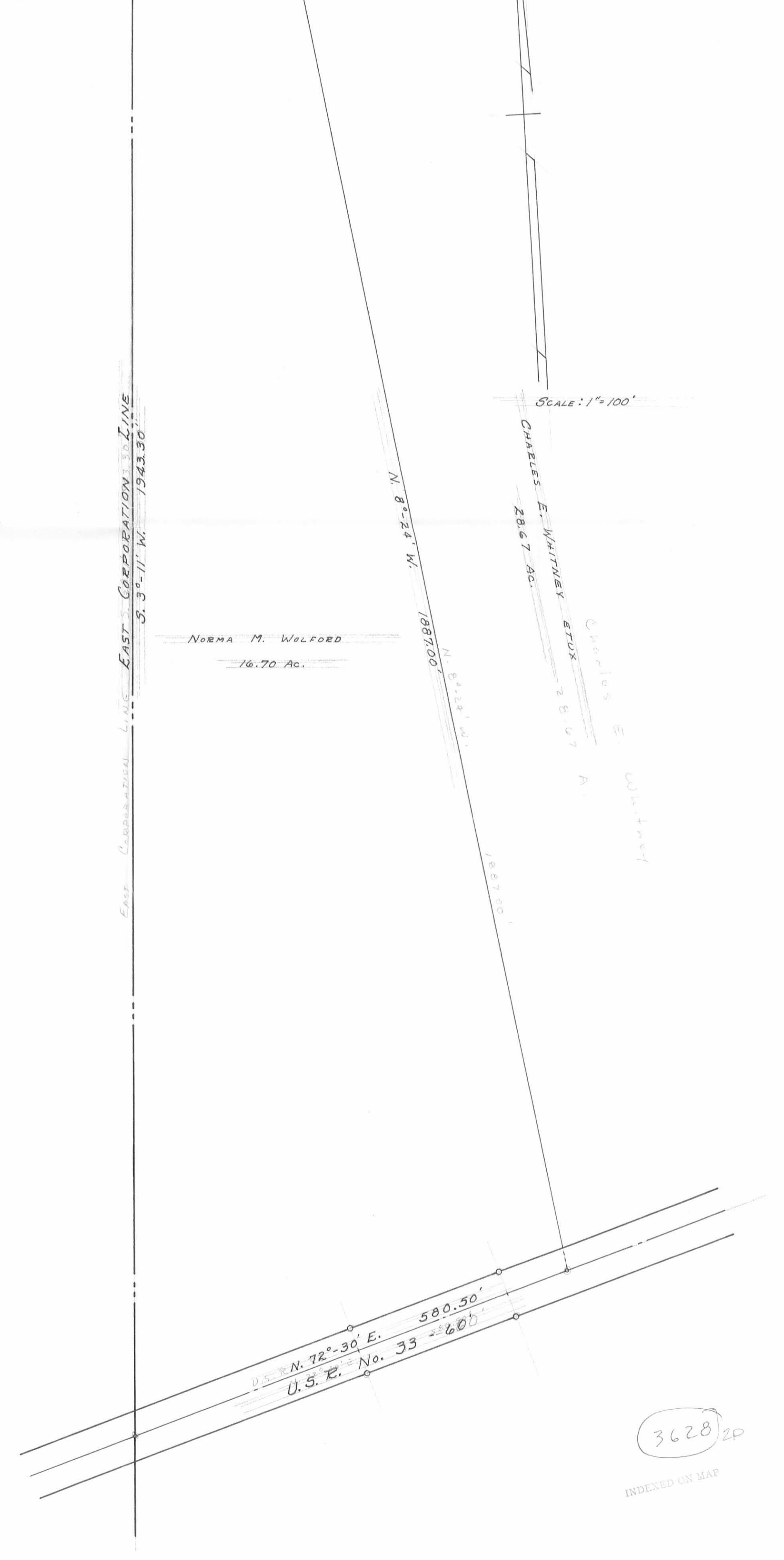
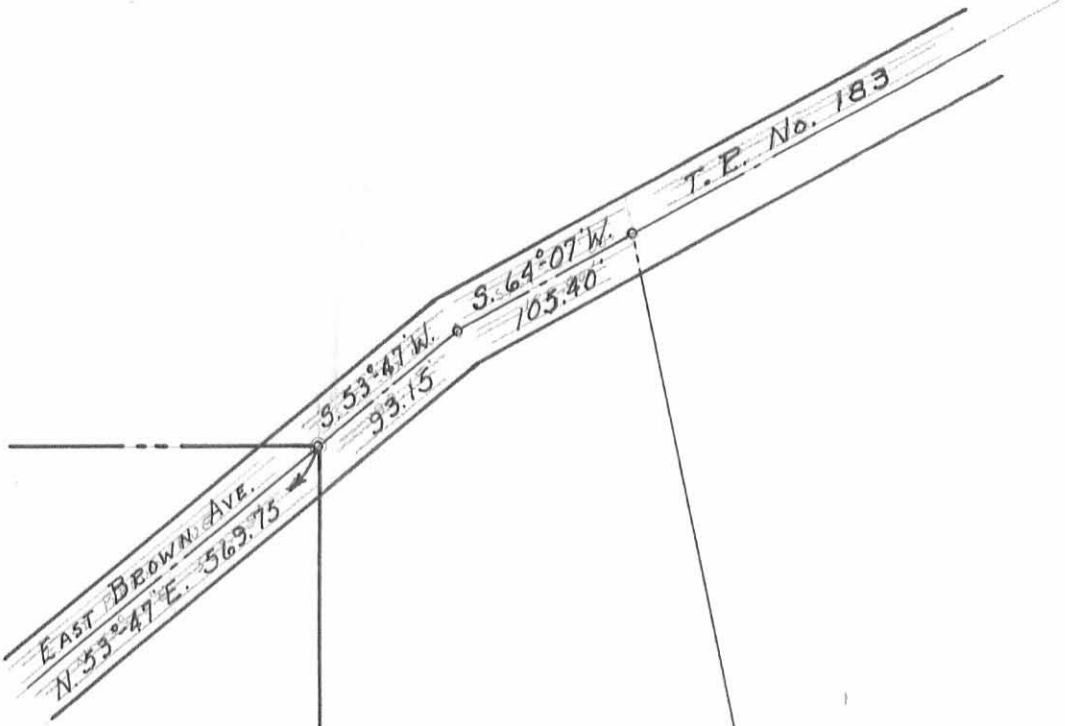
The above described tract contains 16.70 acres and is now in the name of Norma M. Wolford.

The above described 16.70 acres is shown on ~~Logan County~~ ~~Tract~~ ~~Plan~~ Bellefontaine City Engineer's Plan JJ - 126.

cc
Logan County Engineer

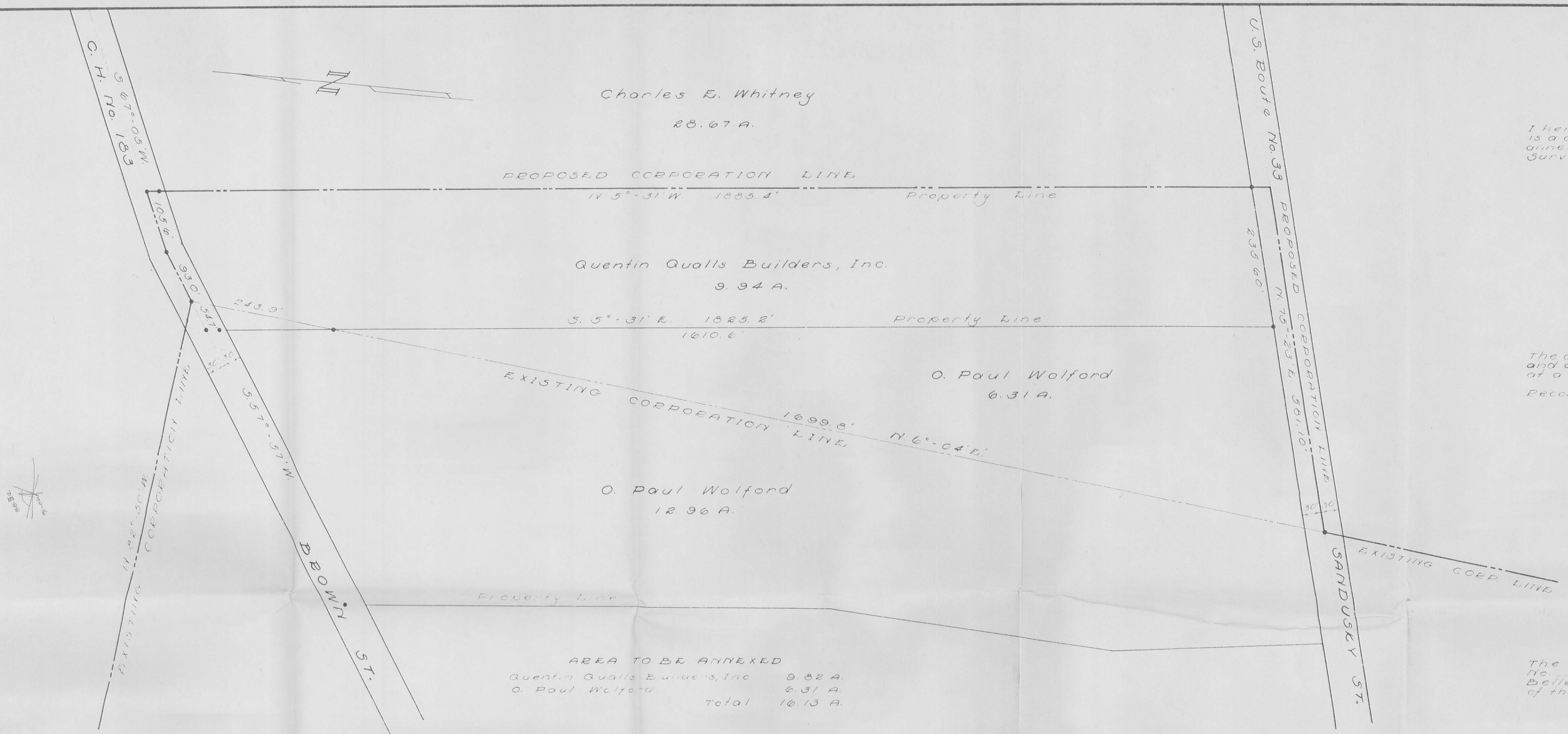


3628 2D
INDEXED ON MAP



3628 2P

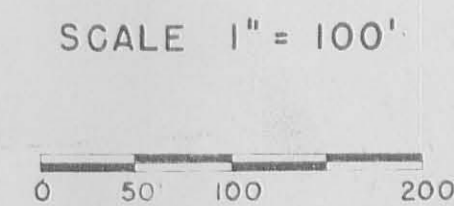
INDEXED ON MAP



AREA TO BE ANNEXED

Quentin Qualls Builders, Inc.	9.82 A.
O. Paul Wolford	6.31 A.
total	16.13 A.

NOTE:
• indicates Irons



CORPORATION LINE EXTENSION

VIRGINIA MILITARY SURVEY 4399

BELLEFONTAINE OHIO

1956

SURVEYOR'S CERTIFICATE

I hereby certify that the accompanying Plat is a correct representation of property to be annexed to the City of Bellefontaine, Ohio. Surveyed September 25, 1956

Dan R. Wadsworth
Registered Surveyor
No. 4270

ACCEPTANCE

The accompanying Plat is hereby approved and accepted by the Board of County Commissioners at a regular meeting this ___ day of ___ 195__
Recorded in Commissioners Journal ___ pg. ___

Logan County
Commissioners

ACCEPTANCE

The annexed Plat was adopted by Ordinance No. ___ as an addition to the City of Bellefontaine, State of Ohio at a regular meeting of the City Council this ___ day of ___ 195__

Mayor

Clerk

President of Council

AUDITOR'S OFFICE

The land indicated on the accompanying Plat transferred this ___ day of ___ 195__

Logan County
Auditor

RECORDER'S OFFICE

Received for Record at ___ o'clock ___ M on this ___ day of ___ 195__
Recorded in Plat Book ___ Volume ___ Page ___

Logan County
Recorder

INDEXED ON MAP
2020