

East R/W line of T. & O. C. R.R.
 & curve is 330' West & is a 2°18'R curve.
 Chord dist. of 570.1

Cor. Post

N 82°-00'W
 273.4

4.25 Acres inside right of way lines.

CARLISLE
 Iron found
 S 89°-54'W 101.8
 S 70°-18'W 106.5
 S 39°-54'W 105.4
 50.0'

477.0

S 15°-16'E 508.2

DETROIT ST. 60.0'

Logan Co. Coop. Power
 Light Assn. 0.16A.
 S 3°-46'W 150.0
 120.0
 N 3°-46'E 150.0
 101.1

340.0

LAKE AVE. 600'
 S 86°-14'E 340.0

1" = 30'

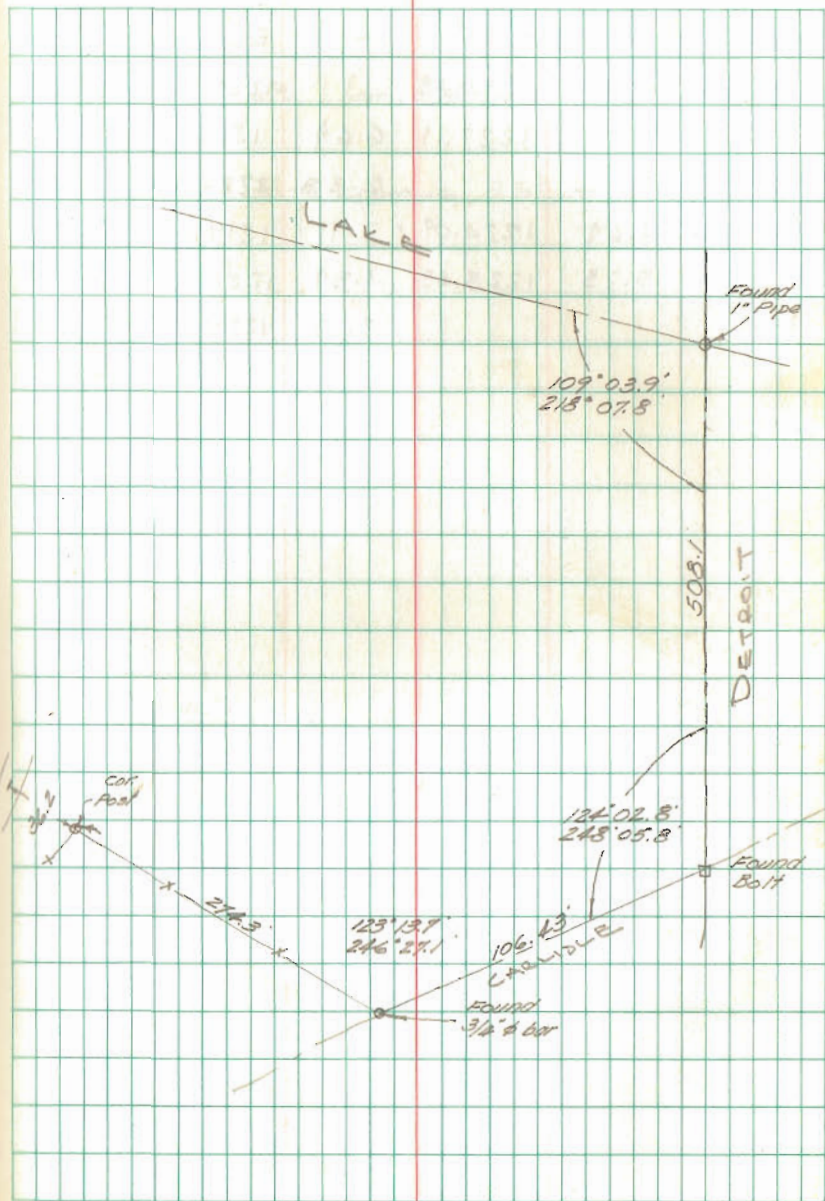
PETERS SURVEY
BELLEFONTAINE, O.
OWEN K. SHIRK SURVEYOR 4271

33

LOGAN COUNTY LUMBER TOPO
LAKE @ DETROIT

Whitlow
Artis

8/16/69 34



INDEXED ON MAP
3696