

GROTH CORP CONT'D.

Dodson
Coil

V9/65
20°

67

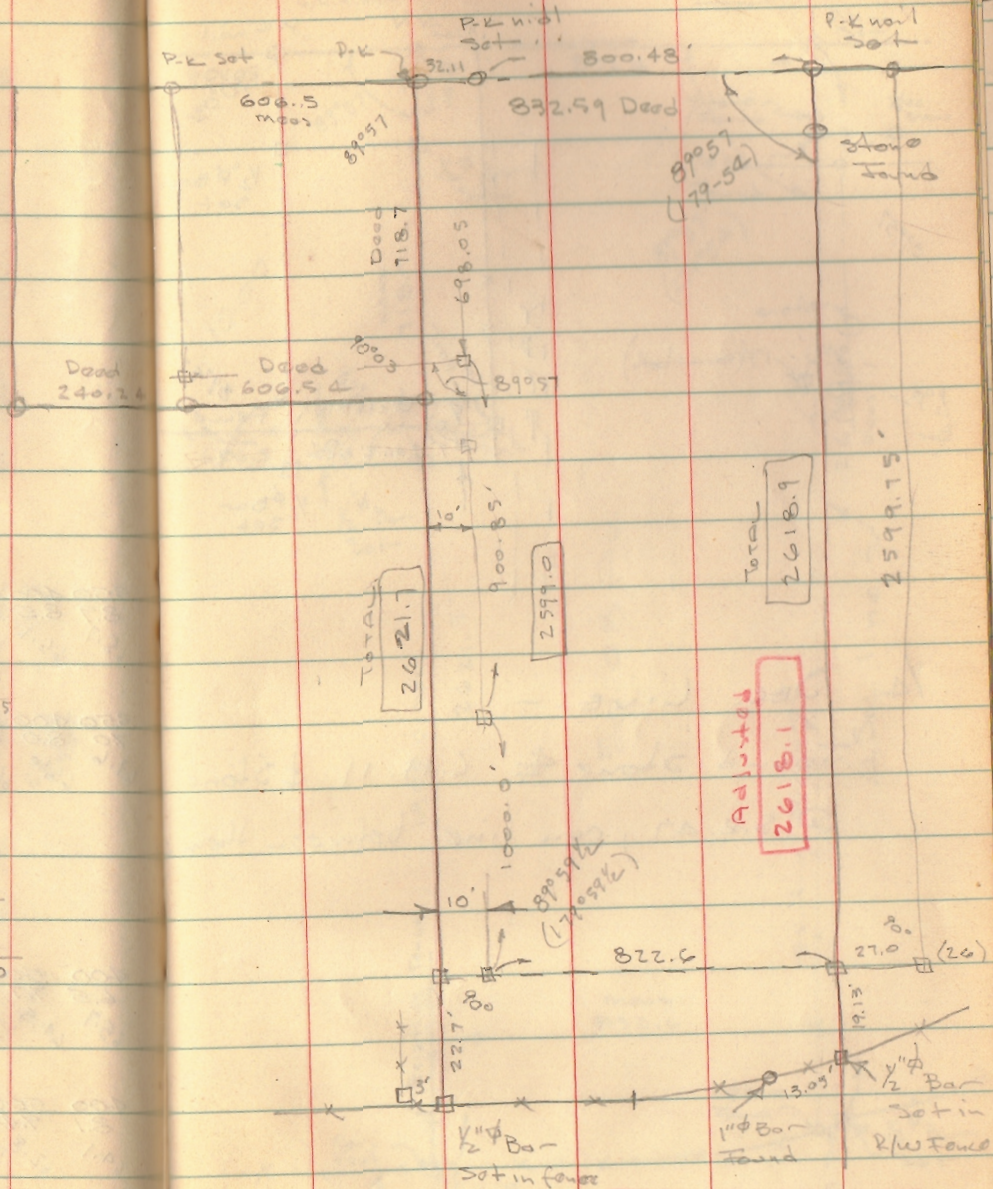
$$\begin{array}{r} 832.59 \\ 800.48 \\ \hline 32.11 \end{array}$$

$$\begin{array}{r} 698.05 \\ 900.85 \\ 1000.0 \\ \hline 2598.95 \\ 22.7 \\ \hline 2621.65 \end{array}$$

$$\begin{array}{r} 718.7 \\ 698.05 \\ \hline 20.65 \end{array}$$

$$\begin{array}{r} 1921.3 \\ 718.7 \\ \hline 2640.0 \end{array}$$

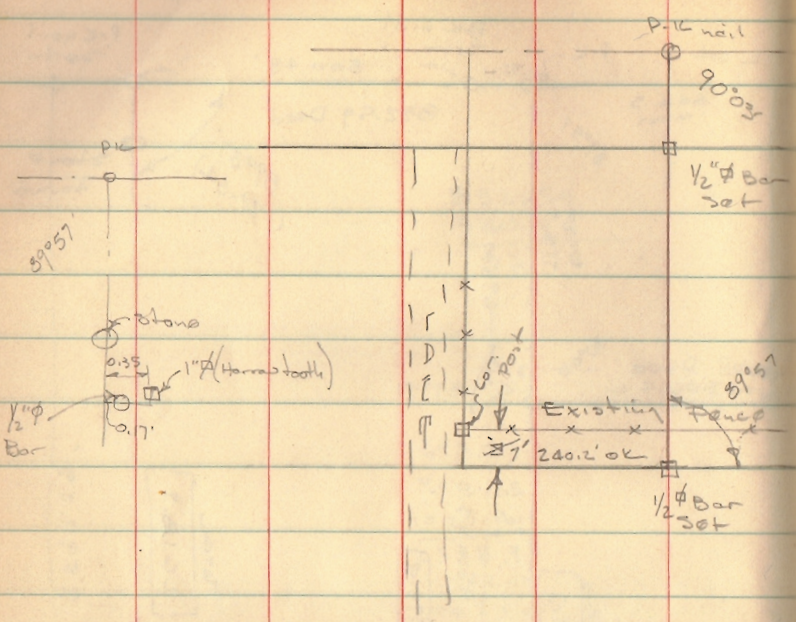
$$\begin{array}{r} 1000.0 \\ 900.9 \\ 22.7 \\ \hline 1923.6 \\ 20.6 \\ \hline 1903.0 \end{array}$$



INDEXED ON MAP
3810

3810

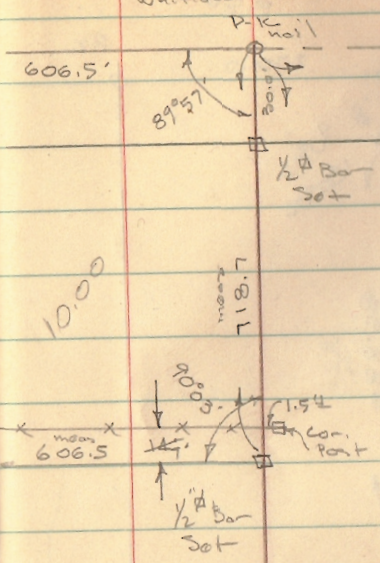
GROWTH CORP CONTD



1/4 Sec. Line -

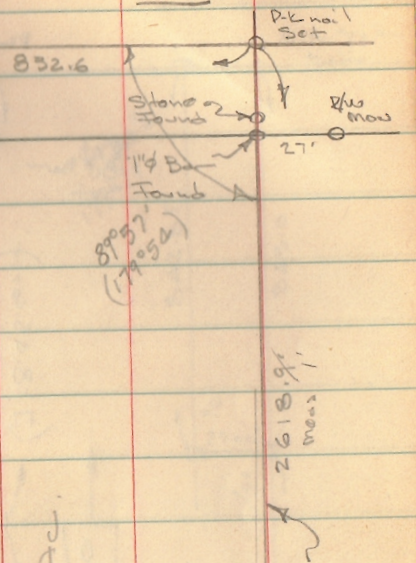
Found stone & C.H. 11 & Stone @ S.R. 47, ran line between them

Dodge
Geoslin
whitlow

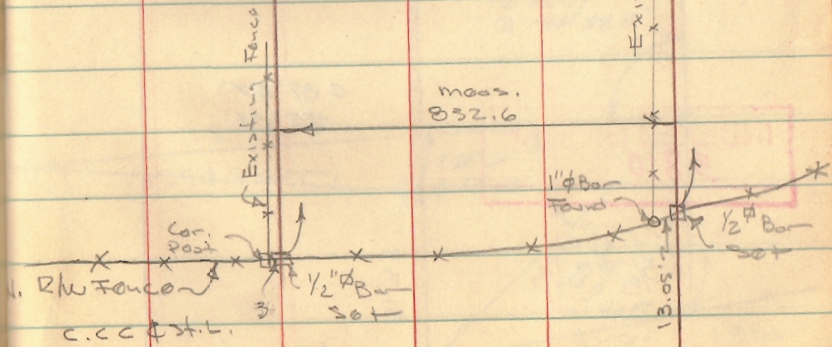


April 3/1965 68

Fivis

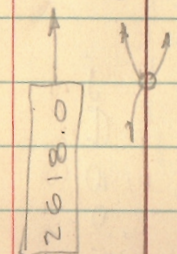
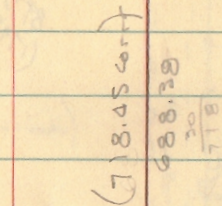
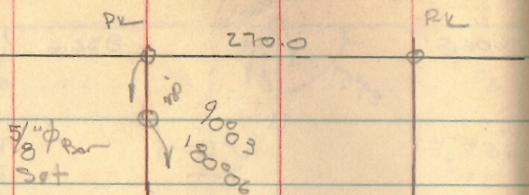


50.08 AC.



INDEXED ON MAP
3810

6/4/66
880



92019
8757
9003

27019
8920 1/2

35939 1/2

(400' 1/2)
1868.2'
1868.0'

0 87° 57'
175° 54'

INDEXED ON MAP
3810

5/8" Pb.
Set in
fence

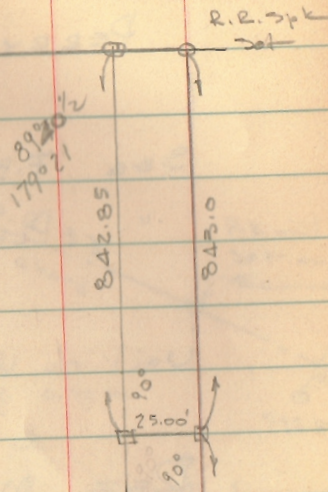
31.37

2700.0'

5/7/66

68°

69



Hub @ 844.70

5099.1

0 92° 19'
0 184° 38.5'

1254.8

(1254.9 corr.)

0 24° 24'
0 48° 48'

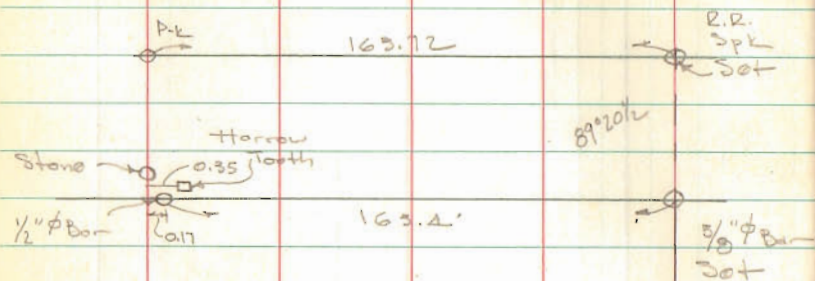
169.35
(169.35 corr.)

66.09'

1/2" Pb.

1" Pb.

LOGAN G. Ind. Growth Corp.
HARRISON Twp.



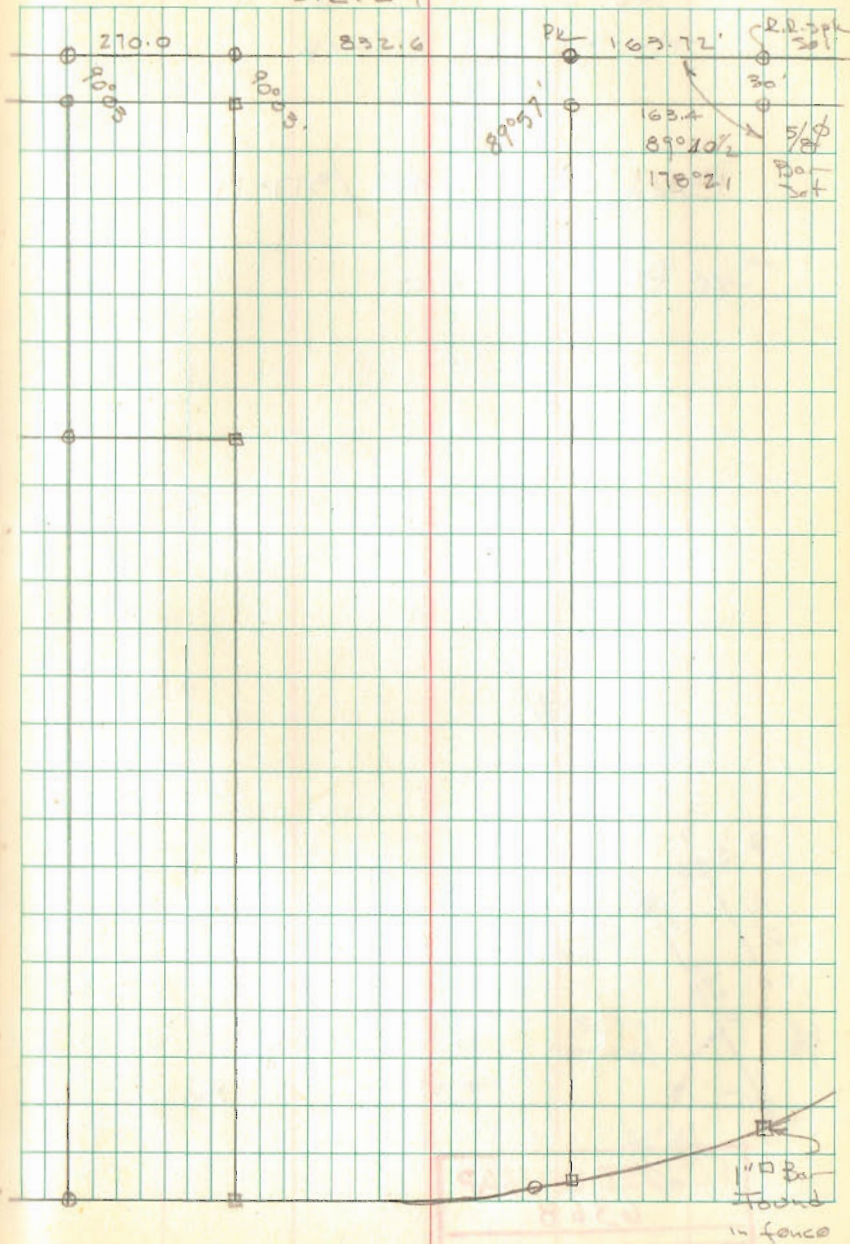
See Bk 6 pgs 58 to 69

INDEXED ON MAP
3810

5/8/66

59

S.R. 47



11\"/>