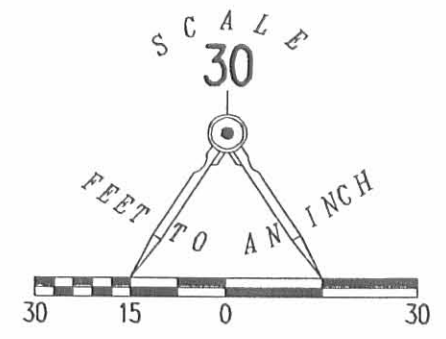
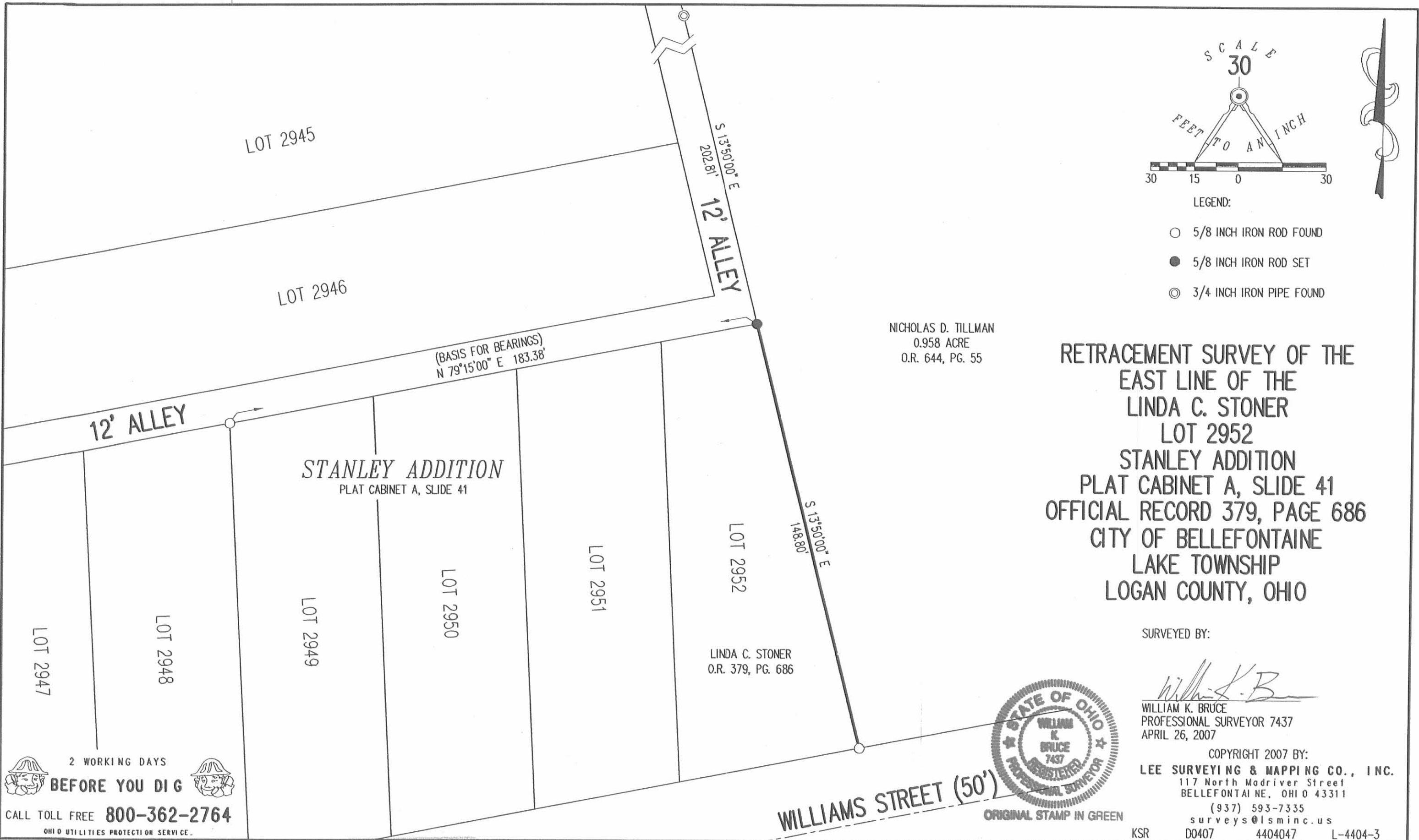


REC'D 4-27-07 SUM OK



NICHOLAS D. TILLMAN
 0.958 ACRE
 O.R. 644, PG. 55

RETRACEMENT SURVEY OF THE
 EAST LINE OF THE
 LINDA C. STONER
 LOT 2952
 STANLEY ADDITION
 PLAT CABINET A, SLIDE 41
 OFFICIAL RECORD 379, PAGE 686
 CITY OF BELLEFONTAINE
 LAKE TOWNSHIP
 LOGAN COUNTY, OHIO

SURVEYED BY:

William K. Bruce
 WILLIAM K. BRUCE
 PROFESSIONAL SURVEYOR 7437
 APRIL 26, 2007



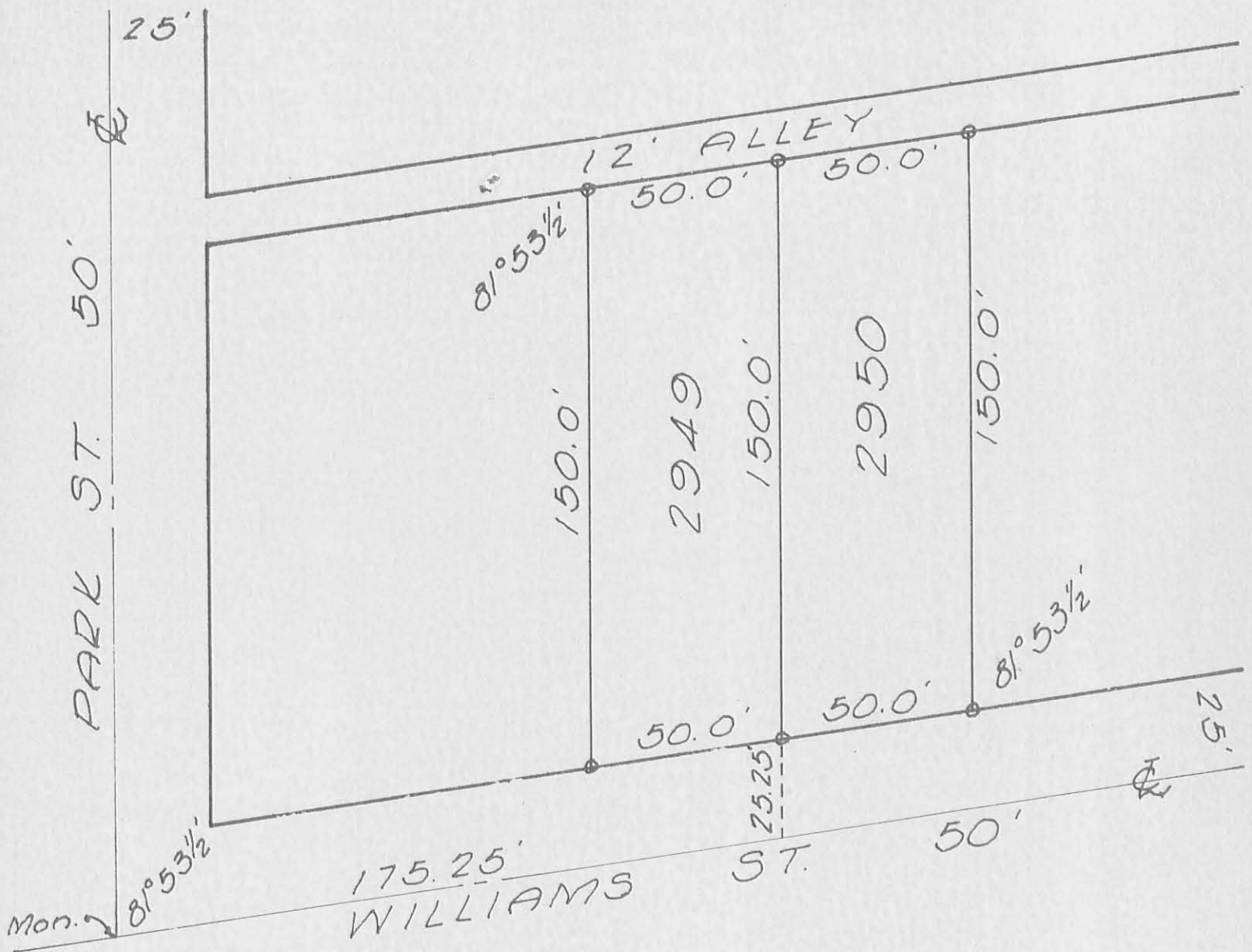
COPYRIGHT 2007 BY:
LEE SURVEYING & MAPPING CO., INC.
 117 North Modriver Street
 BELLEFONTAINE, OHIO 43311
 (937) 593-7335
 surveys@lsminc.us
 KSR D0407 4404047 L-4404-3

WILLIAMS STREET (50')

ORIGINAL STAMP IN GREEN

2 WORKING DAYS
BEFORE YOU DIG
 CALL TOLL FREE **800-362-2764**
 OHIO UTILITIES PROTECTION SERVICE.

INDEXED ON MAP
 4157 1P



SURVEY OF
 LOTS 2949 & 2950
 BELLEFONTAINE, OHIO
 APRIL 1, 1967
 SCALE 1" = 40'

4157

24

INDEXED ON MAP

Dan L. Dodson

Dan L. Dodson
 Reg. Surveyor 4270
 Bellefontaine, Ohio

o = 1" ϕ Bar Set