

NOTES:

- = Iron Pin Found
- REF: City Eng. F.B. 192, Pg. 91
- SETBACK LINES
- Front - 25' (Troy St.)
- Side - 5'
- Rear - 40'

SURVEY OF  
 PART OF LOTS 785 and 786  
 MCBETHS ADDITION  
 BELLEFONTAINE, OHIO  
 February 7, 1962  
 SCALE 1"=20'

I hereby certify that this plat is a correct representation of a survey made by me on February 7, 1962 and that same shows the improvements as located on the premises. The improvements are entirely within the property lines and there are no encroachments on the premises by improvements on adjoining premises.

*Dan L. Dodson*

Dan L. Dodson  
 Registered Surveyor 4270

INDEXED ON MAP  
 4756 1P

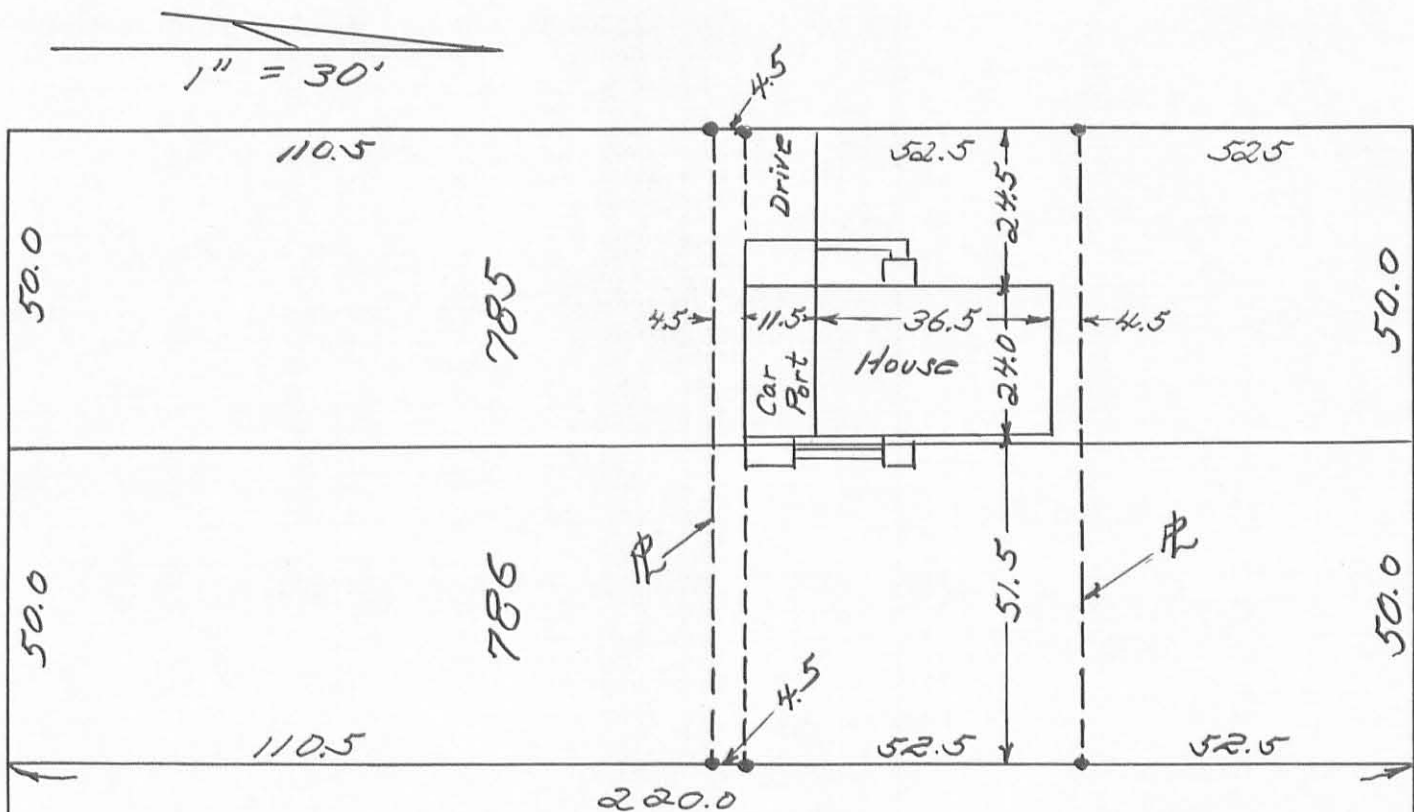
PART LOTS 785 & 786 - BELLEFONTAINE, OHIO  
LAKE TWP., - LOGAN CO.

SECTION 34

• Denotes irons

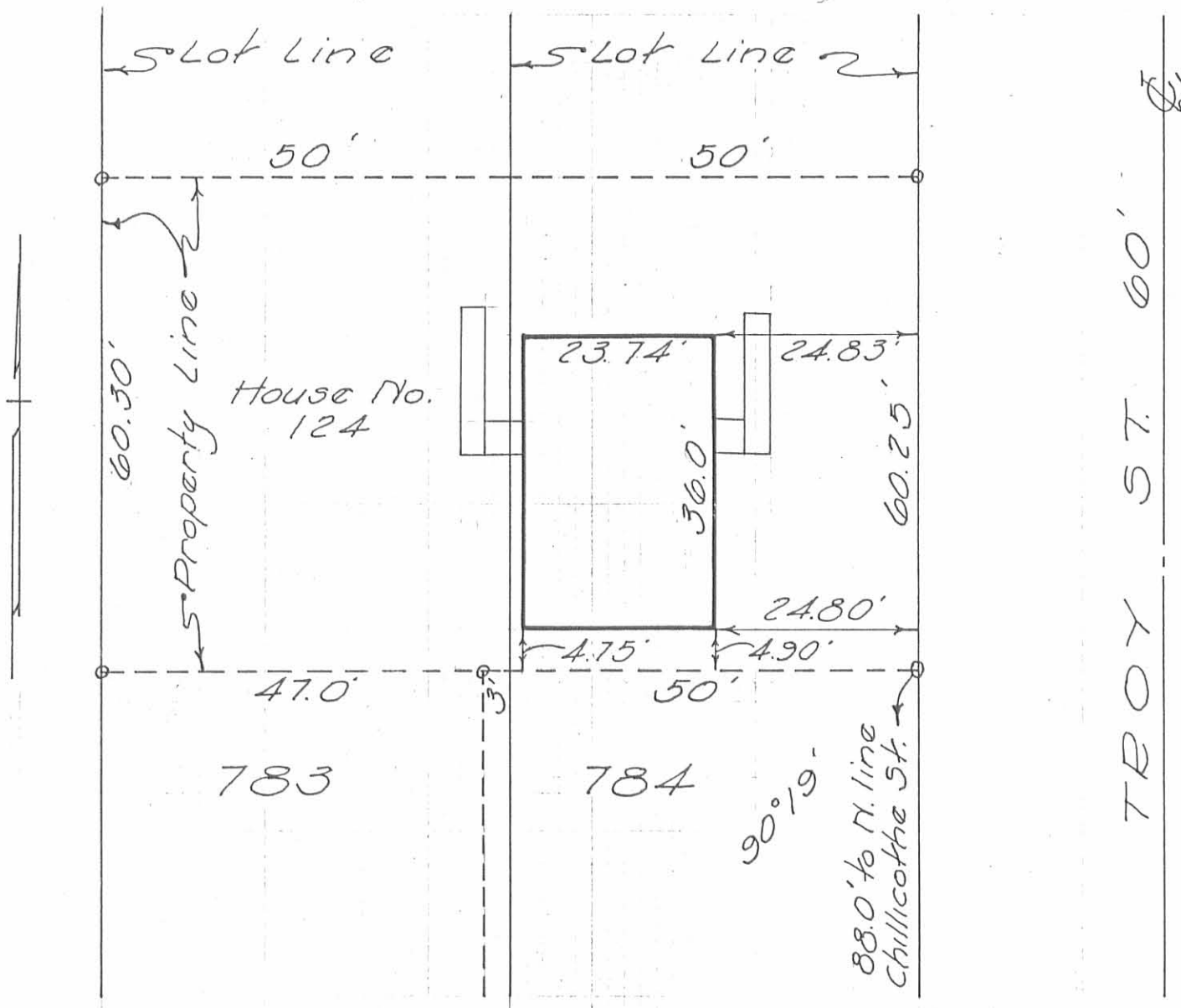
TROY ST. 60.0

CHILLICOTHE AVE 60.0



INDEXED ON MAP  
4756 2P

Owen K. Shirk  
OWEN K. SHIRK  
SURVEYOR 4271



REF:  
 City Eng. F.B. 243, pg. 79  
 o = Iron Pipe

SURVEY OF PART LOTS 783-784  
 McBETHS ADDITION  
 BELLEFONTAINE, OHIO  
 SCALE 1"=20'  
 April 14, 1962

I hereby certify that this plat is a correct representation of a survey made by me and that same shows the improvements as located on the premises. The improvements are entirely within the property lines and there are no encroachments on the premises by improvements on adjoining premises.

Resurveyed and recertified August 7, 1965.

*Dan L. Dodson*  
 Dan L. Dodson  
 Registered Surveyor 4270

*Dan L. Dodson*  
 Dan L. Dodson  
 Registered Surveyor 4270

INDEXED ON MAP  
 4756 3P