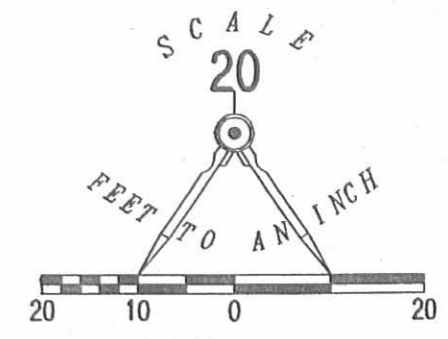
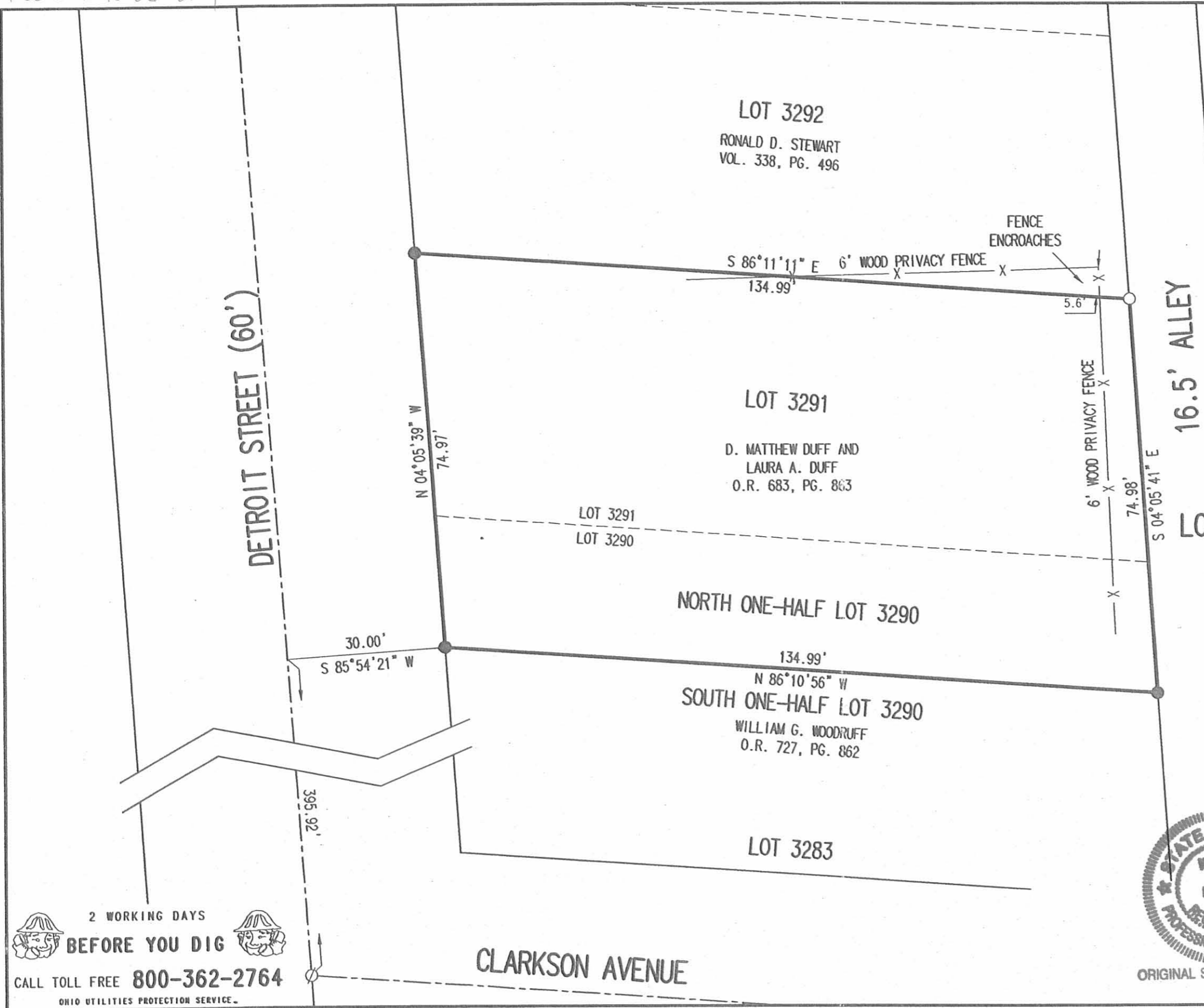


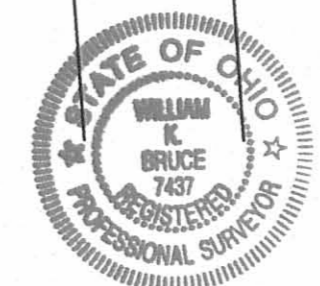
RECID 3-10-06 SMJ/CK



- LEGEND:
- 3/8 INCH IRON ROD FOUND
 - ⊗ MAG NAIL FOUND WITH SHINER
 - 5/8 INCH IRON ROD SET

RETRACEMENT SURVEY OF THE
 D. MATTHEW DUFF AND
 LAURA A. DUFF
 LOT 3291 AND NORTH ONE-HALF LOT 3290
 CLARKS PARK ADDITION
 PLAT CABINET A, SLIDE 113
 OFFICIAL RECORD 683, PAGE 863
 CITY OF BELLEFONTAINE
 LAKE TOWNSHIP
 LOGAN COUNTY, OHIO

SURVEYED BY:
William K. Bruce
 WILLIAM K. BRUCE
 PROFESSIONAL SURVEYOR 7437
 MARCH 8, 2006



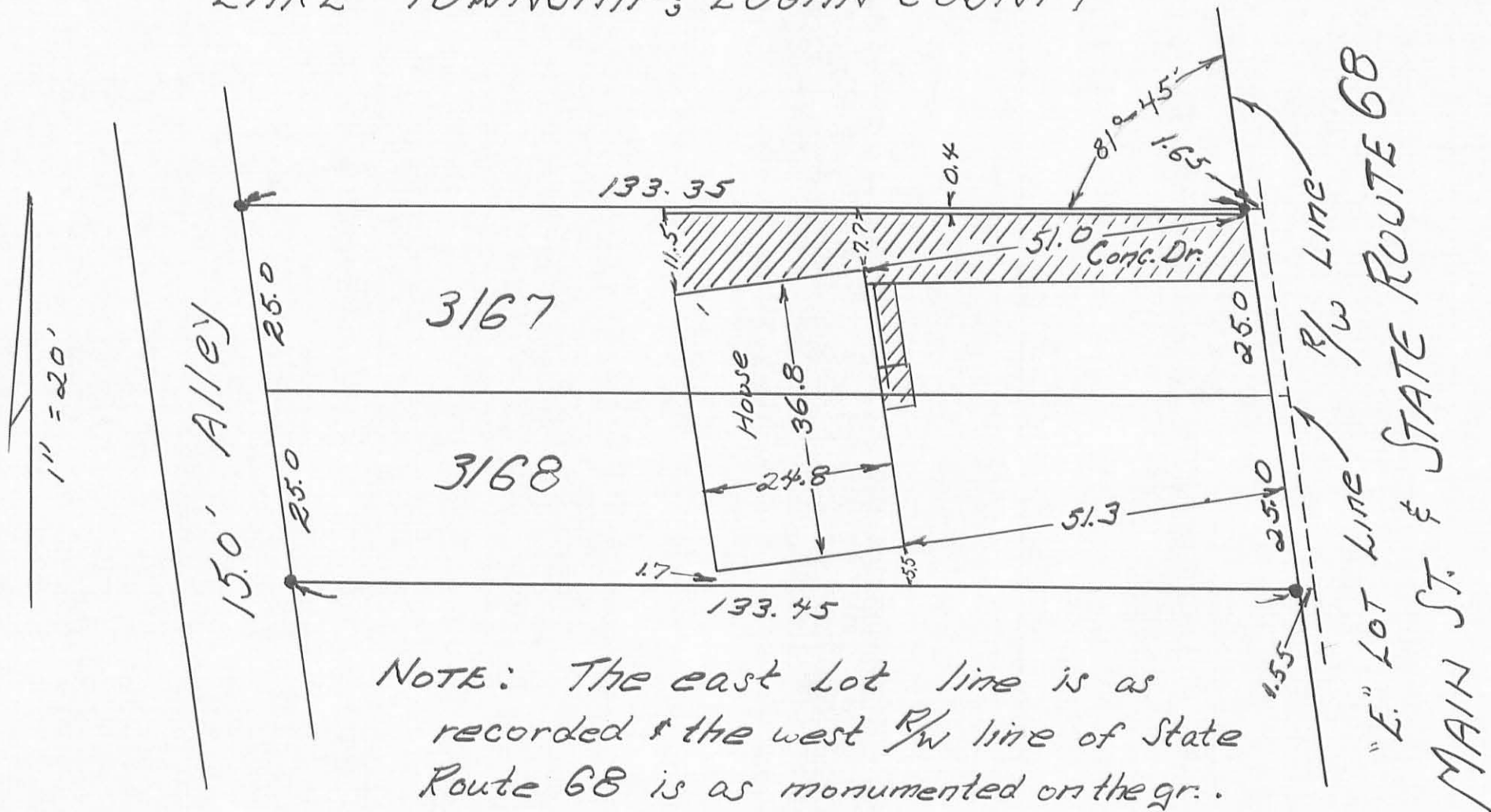
ORIGINAL STAMP IN GREEN

COPYRIGHT 2006 BY:
 LEE SURVEYING & MAPPING CO., INC.
 117 North Madriver Street
 BELLEFONTAINE, OHIO 43311
 (937) 593-7335
 KSR D0306 4199036 L-4196-3

2 WORKING DAYS
BEFORE YOU DIG
 CALL TOLL FREE **800-362-2764**
 OHIO UTILITIES PROTECTION SERVICE

INDEXED ON MAP
 4750 1P

LOTS 3167 & 3168 in CLARK'S PARK ADDITION
 BELLEFONTAINE, OHIO
 LAKE TOWNSHIP, LOGAN COUNTY



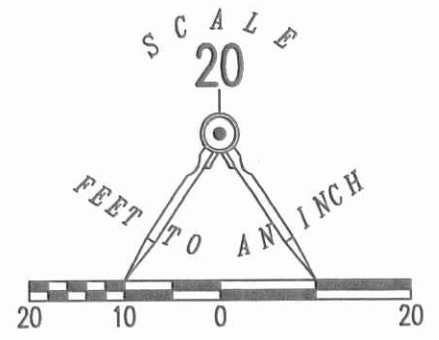
NOTE: The east lot line is as recorded & the west R/W line of State Route 68 is as monumented on the gr.

INDEXED ON MAP
 4758 2P

OWEN K. SHIRK
 SURVEYOR 4271

Surveyed: 2-6-71

✓ APPROVED 9-23-14



RETRACEMENT SURVEY OF THE
JOHN M. PENCE AND
MARGARET E. PENCE
PART OF LOT 3284 AND LOT 3285
CLARK'S PARK ADDITION
PLAT CABINET A, SLIDE 111 & 113
OFFICIAL RECORD 1227, PAGE 807
CITY OF BELLEFONTAINE
LAKE TOWNSHIP
LOGAN COUNTY, OHIO

SURVEYED BY:

William K. Bruce

WILLIAM K. BRUCE
PROFESSIONAL SURVEYOR 7437
SEPTEMBER 9, 2016



COPYRIGHT 2016 BY:
LEE SURVEYING & MAPPING CO., INC.
117 North Madriver Street
BELLEFONTAINE, OHIO 43311
(937) 593-7335
WWW.LSMINC.US
surveys@lsminc.us

KSS D0816 61600816 L-6160-3

THIS SURVEY WAS PREPARED IN THE ABSENCE OF A COMPLETE AND ACCURATE TITLE SEARCH AND DOES NOT GUARANTEE TITLE.



CALL TOLL FREE 800-362-2764
OHIO UTILITIES PROTECTION SERVICE

INDEXED ON MAP
47583P