

Received 6-25-04 OK GJA

Lee Surveying and Mapping Co., Inc.

Land Surveys • Topography • Subdivisions • Construction Layout

117 N. Madriver St.
Bellefontaine OH 43311



Phone: (937) 593-7335
Fax: (937) 593-7444

LINK CONSTRUCTION GROUP INC. 3.694 ACRES

Lying in Section 11, Town 3, Range 14, City of Bellefontaine, Harrison Township, Logan County, Ohio

Being out the Link Construction Group Inc. original 7.03 acre tract as deeded and described in Official Record 458, Page. 531 of the Logan County Records of Deeds.

Beginning at a stone found in a monument box at the northeast corner of the southeast quarter of Section 11 and on the center-line of County Highway 32 (60 feet wide).

THENCE, with the east line of Section 11 and the center-line of County Highway 32, S 5°-35'-20"W, a distance of 308.80 feet to a MAG nail found.

THENCE, with a north line of the City of Bellefontaine 7.004 acre tract (O.R. 323, Pg. 246), N 78°-11'-50"W, a distance of 599.76 feet to a 5/8 inch iron rod set, passing a 5/8 inch iron rod found at 30.41 feet.

THENCE, N 5°-35'-20"E, a distance of 230.94 feet to a 5/8 inch iron rod set.

THENCE, with the north line of the southeast quarter section of Section 11 and the south line of the Donald J. Staley and Bonnie L. Staley 166.92 acre tract (O.R. 211, Pg. 679), S 85°-39'-17"E, a distance of 596.37 feet to the point of beginning, passing a 5/8 inch iron rod found at 566.37 feet.

Containing 3.694 acres of which 0.211 acre is within the highway right-of-way.

The basis for bearings is the east line of Section 11 being S 5°-35'-20"W, and all other bearings are from angles and distances measured in a field survey by Lee Surveying and Mapping Co., Inc. on May 7, 2004.

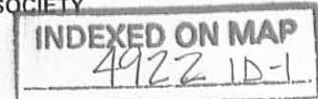


ORIGINAL STAMP IN GREEN

Description prepared by:

A handwritten signature in black ink, appearing to read 'Jeffrey I. Lee'.
Jeffrey I. Lee
Professional Surveyor 6359
May, 7, 2004

2801054



Lee Surveying and Mapping Co., Inc.

Land Surveys • Topography • Subdivisions • Construction Layout

117 N. Madriver St.
Bellefontaine OH 43311



Phone: (937) 593-7335
Fax: (937) 593-7444

LINK CONSTRUCTION GROUP INC. 3.222 ACRES

Lying in Section 11, Town 3, Range 14, City of Bellefontaine, Harrison Township, Logan County, Ohio

Being out the Link Construction Group Inc. original 7.03 acre tract as deeded and described in Official Record 458, Page. 531 of the Logan County Records of Deeds.

Beginning at a stone found in a monument box at the northeast corner of the southeast quarter of Section 11 and on the center-line of County Highway 32 (60 feet wide).

THENCE, with the Quarter Section line, N 85°-39'-17"W, a distance of 596.37 feet to a 5/8 inch iron rod set at the TRUE POINT OF BEGINNING.

THENCE, S 5°-35'-20"W, a distance of 230.94 feet to a 5/8 inch iron rod set.

THENCE, with the north line of the City of Bellefontaine 7.004 acre tract (O.R. 323, Pg. 246), N 78°-11'-50"W, a distance of 783.59 feet to a 5/8 inch iron rod found.

THENCE, with the east lines of the said 7.004 acre tract and the Floyd Brock and Virginia Brock, Co-Trustees 80.37 acre tract (O.R. 472, Pg. 49, Tract II), N 5°-13'-25"E, a distance of 129.22 feet to a 5/8 inch iron rod found.

THENCE with the south line of the Donald J. Staley and Bonnie L. Staley 166.92 acre tract (O.R. 211, Pg. 679), S 85°-39'-17"E, a distance of 779.89 feet to the point of beginning.

Containing 3.222 acres

The basis for bearings is the east line of Section 11 being S 5°-35'-20"W, and all other bearings are from angles and distances measured in a field survey by Lee Surveying and Mapping Co., Inc. on May 7, 2004.



Description prepared by:

A handwritten signature in black ink, appearing to read 'Jeffrey I. Lee'.
Jeffrey I. Lee
Professional Surveyor 6359
May 7, 2004

ORIGINAL STAMP IN GREEN

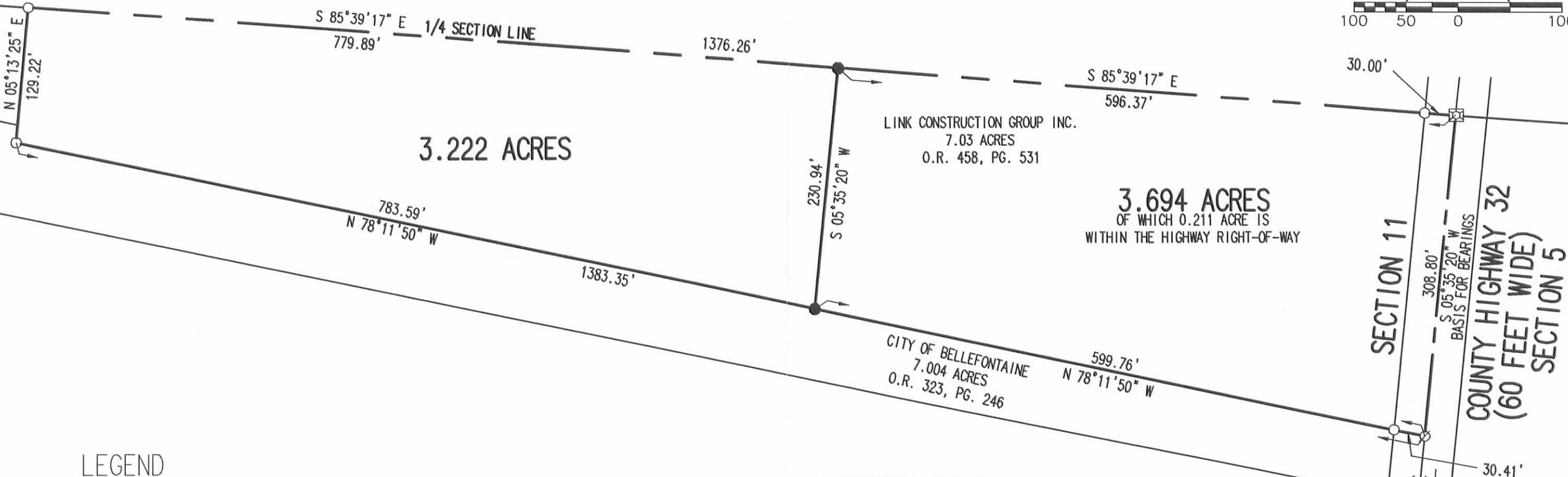
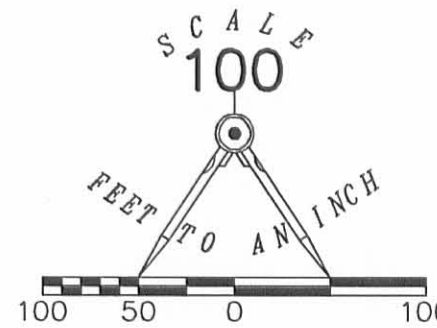
2801054C

MEMBER: AMERICAN CONGRESS ON SURVEYING MAPPING (ACSM) • NATIONAL SOCIETY OF PROFESSIONAL SURVEYORS (NSPS)
PROFESSIONAL LAND SURVEYORS OF OHIO (PLSO) • SURVEYORS HISTORICAL SOCIETY

INDEXED ON MAP
4922-10-2

FLOYD BROCK AND VIRGINIA BROCK,
CO-TRUSTEES
80.37 ACRE TRACT
O.R. 472, PG. 49
TRACT 11

DONALD J. STALEY AND BONNIE L. STALEY
166.92 ACRES
O.R. 211, PG. 679



3.222 ACRES

LINK CONSTRUCTION GROUP INC.
7.03 ACRES
O.R. 458, PG. 531

3.694 ACRES
OF WHICH 0.211 ACRE IS
WITHIN THE HIGHWAY RIGHT-OF-WAY

CITY OF BELLEFONTAINE
7.004 ACRES
O.R. 323, PG. 246

SECTION 11
COUNTY HIGHWAY 32
(60 FEET WIDE)
SECTION 5

LEGEND

- 5/8 INCH IRON ROD SET
- ⊠ STONE FOUND IN MONUMENT BOX
- ⊗ MAG NAIL FOUND
- 5/8 INCH IRON ROD FOUND

A SURVEY OF A
3.222 ACRE TRACT AND 3.694 ACRE TRACT OUT OF THE
LINK CONSTRUCTION GROUP INC.
ORIGINAL 7.03 ACRE TRACT
OFFICIAL RECORD 458, PAGE 531
SECTION 11, TOWN 3, RANGE 14
CITY OF BELLEFONTAINE
HARRISON TOWNSHIP
LOGAN COUNTY, OHIO



SURVEYED BY:
Jeffrey I. Lee
JEFFREY I. LEE
PROFESSIONAL SURVEYOR 6359
MAY 7, 2004

COPYRIGHT 2004 BY:
LEE SURVEYING & MAPPING CO., INC.
117 North Madriver Street
BELLEFONTAINE, OHIO 43311
(937) 593-7335

2 WORKING DAYS
BEFORE YOU DIG
CALL TOLL FREE 800-362-2764
OHIO UTILITIES PROTECTION SERVICE.

ADW D412 2801054C L2801044A-3

INDEXED ON MAP
4922 IP

STRATTON DESCRIPTION
Sec.11 T-3 R-14
HARRISON TOWNSHIP
January 13, 1972

The following described real estate situated in Harrison Township, Logan County, Ohio and being part of the Southeast 1/4 of Section 11, Town 3, Range 14 of the Between the Miami Rivers Survey and more particularly described as follows:

Beginning at a stone in the center of County Highway No.32 at the northeast corner of said Southeast 1/4 section; thence with the center of said road South 308.6 feet to the north right of way line of the T. & O. C. Railroad; thence with said north right of way line northwesterly 1380 feet to the east line of Frank Gebby's 119.69 acre tract; thence with said east line North 136.4 feet to the north line of said Southeast 1/4 section; thence with said 1/4 section line East 1376.1 feet to the place of beginning.

Containing 7.03 acres more or less.

The above described tract being part of Herbert A. Stratton's 51.98 acre tract.

EMERSON L. SHROYER J/S
CAROL E. SHROYER
1941
441 B. CAULFIELD RD
PRESIDIO SAN FRANCISCO
CALIF
94129

4922 2D



1/4 SEC. LINE 7

EAST 1376.1'

7.03 AC

T & O. C. R. R 1380'

66' R/W

HERBERT A STRATTON

44.95 AC.

FRANK GEBBY
110.69

NORTH

308.6

SOUTH

SEC. LINE 7

C.H. No. 37

STRATTON DESCRIPTION

SEC. 11 T-3 R-14

HARRISON TOWNSHIP

LOGAN COUNTY, OHIO

JANUARY 13, 1972

SCALE 1" = 200'

DAN L. DODSON

REG. SURVEYOR 4270

BELLEFONTAINE, OHIO

INDEXED ON MAP

4922 2P