

ROBERT E. POWELL

To

The City of Bellefontaine  
V.M.S. 4399 - V.M.S. 4478  
Lake Township

12-30-71

December 21, 1971

The following described real estate situated in the City of Bellefontaine, Lake Township, Logan County, Ohio and being part of Virginia Military Survey 4399 and Virginia Military Survey 4478 and being more particularly described as follows:

Commencing at a wood corner post at the southwest corner of V.M.S. 3683, said post also being the southwest corner of the Village of Bellefontaine 5.70 acre tract; thence with the south line of said V.M.S. 3683, N. 88° 02' E. 40.1 feet to an iron bar, said iron bar being the beginning point of this description; thence continuing with said survey line N. 88° 02' E. 469.1 feet to a post at the northwest corner of Suzanne Rowlands' 1.96 acre tract; thence with said Rowlands' west line S. 8° 05' W. 642.1 feet to an iron bar; thence N. 83° 40' W. 317.4 feet to an iron bar; thence N. 6° 09' W. 588.7 feet to the place of beginning.

Containing 5.50 acres more or less of which 4.15 acres are in V.M.S. 4399 and 1.35 acres are in V.M.S. 4478.

The above described tract being 4.15 acres out of Robert E. Powells' 46.74 acre tract and 1.35 acres out of Robert E. Powells' 43.00 acre tract.

4991 ID  
INDEXED ON MAP

CITY OF BELLEFONTAINE  
5.70 AC.

EDWARD W. CAMPBELL  
15.53 AC.

V.M.S. 4399  
V.M.S. 3683

CORNER  
POST

40.11'

N. 88° 02' E. 469.1'

CORNER  
POST

V.M.S. 3683

V.M.S. 4399



5.50 AC.

SUZANNE ROWLANDS ET VIR  
1.96 AC.

V.M.S. 4399  
V.M.S. 4478

N. 6° 09' W. 588.7'

S. 8° 05' W. 642.1'

SCALE : 1" = 100'

N. 83° 40' W. 317.4'

3.65 AC.

4991 IP

INDEXED ON MAP

ROBERT E. POWELL  
TO  
CITY OF BELLEFONTAINE  
DECEMBER, 1971  
V.M.S. 4399 & V.M.S. 4478  
LAKE TOWNSHIP  
LOGAN COUNTY, OHIO

Chester R. Kurtz P.E.  
Logan County Engineer  
By Dan L. Dodson  
Reg. Surveyor 4270  
Drawn By L.H.C. 12/20/71

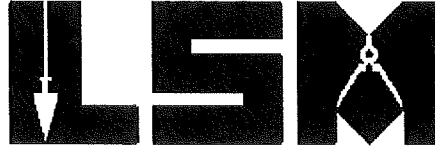
5-4-18

# Lee Surveying and Mapping Co.

Land Surveys • Topography • Subdivisions • Construction Layout



117 N. Madriver St.  
Bellefontaine OH 43311



Phone: (937) 593-7335  
Fax: (937) 593-7444  
surveys@lsminc.us

## LOT 4953

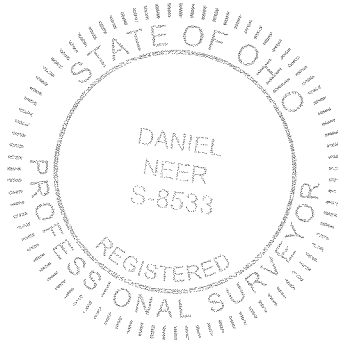
Lying in the City of Bellefontaine, Lake Township, Logan County, Ohio  
(all records referenced herein refer to the Logan County Records of Deeds).

Being Lot 4953 of the Fred Carter Park Estates Subdivision as  
recorded in Plat Cabinet B, Slides 108B – 109A.

Property is subject to covenants, conditions, restrictions, easements and  
zoning ordinances, if any, contained in prior instruments of record.

Parcel No. 17-092-11-02-009-001.

Description prepared by:



Daniel A. Neer  
Professional Surveyor No. 8533  
April 30, 2018

MS18028 Lot 4953



5-14-18

# Lee Surveying and Mapping Co.

Land Surveys • Topography • Subdivisions • Construction Layout



117 N. Madriver St.  
Bellefontaine OH 43311



Phone: (937) 593-7335  
Fax: (937) 593-7444  
surveys@lsminc.us

## LOT 4954

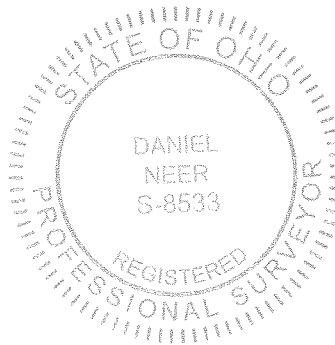
Lying in the City of Bellefontaine, Lake Township, Logan County, Ohio  
(all records referenced herein refer to the Logan County Records of Deeds).

Being Lot 4954 of the Fred Carter Park Estates Subdivision as  
recorded in Plat Cabinet B, Slides 108B – 109A.

Property is subject to covenants, conditions, restrictions, easements and  
zoning ordinances, if any, contained in prior instruments of record.

Parcel No. 17-092-11-02-009-002.

Description prepared by:



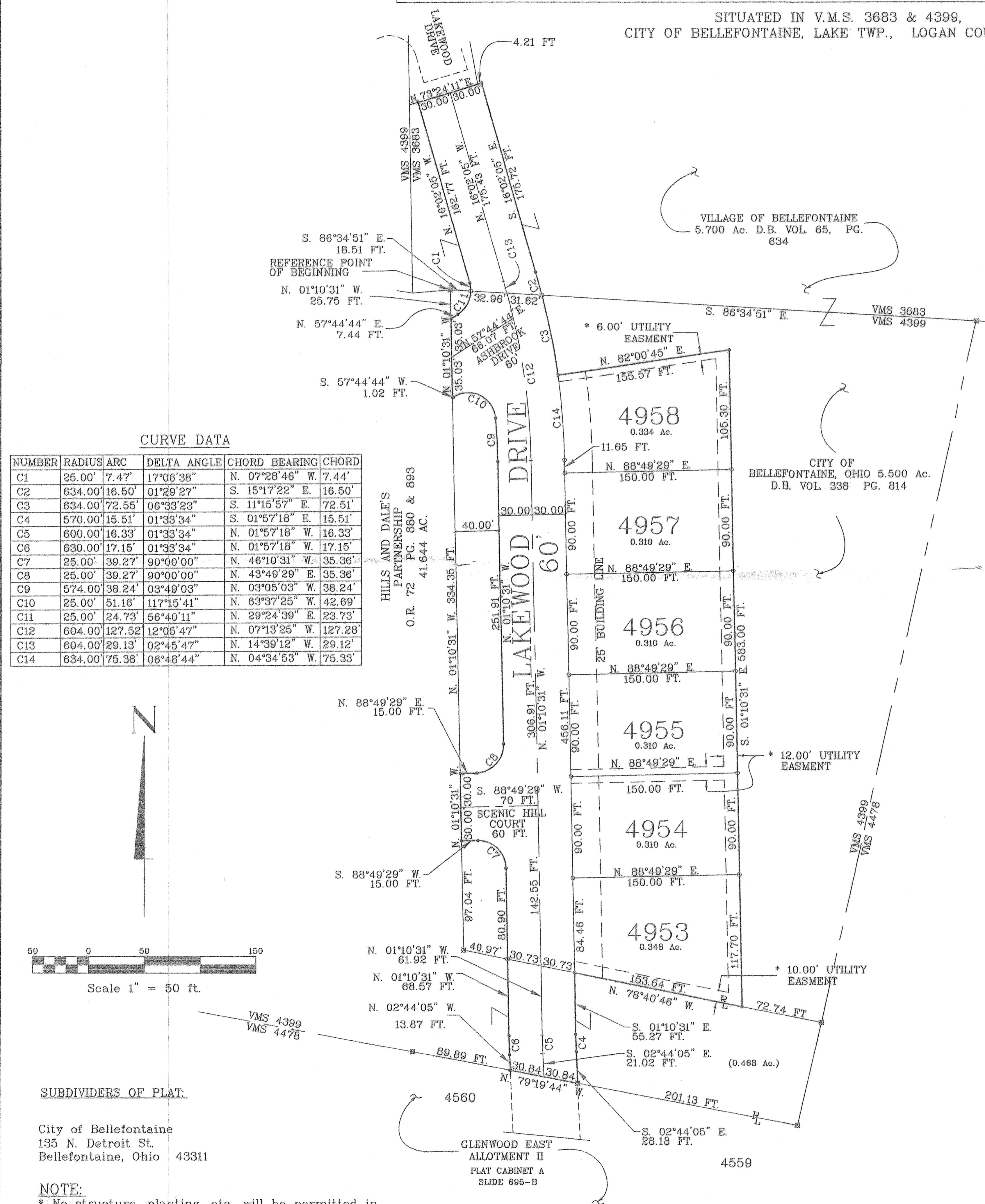
*D. A. Neer*  
Daniel A. Neer  
Professional Surveyor No. 8533  
April 30, 2018

MS18028 Lot 4954



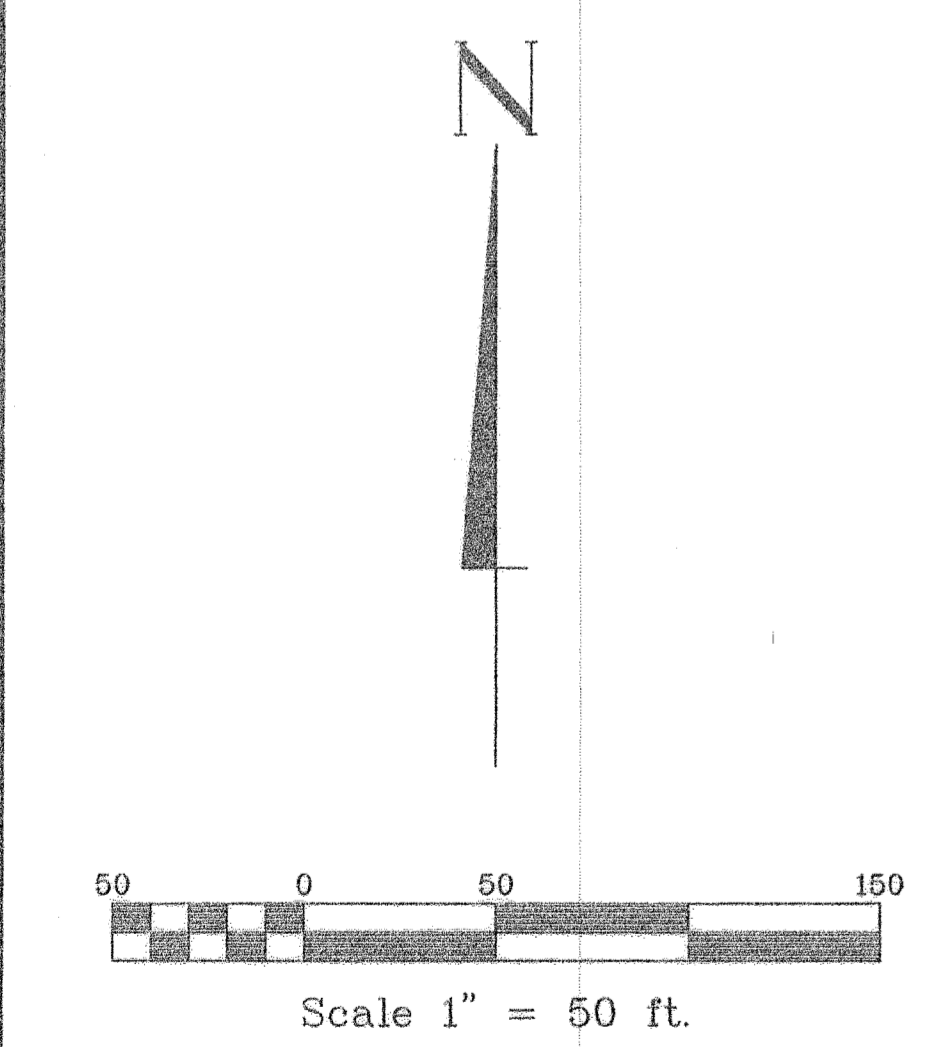
# FRED CARTER PARK ESTATES

SITUATED IN V.M.S. 3683 & 4399,  
CITY OF BELLEFONTAINE, LAKE TWP., LOGAN COUNTY, OHIO



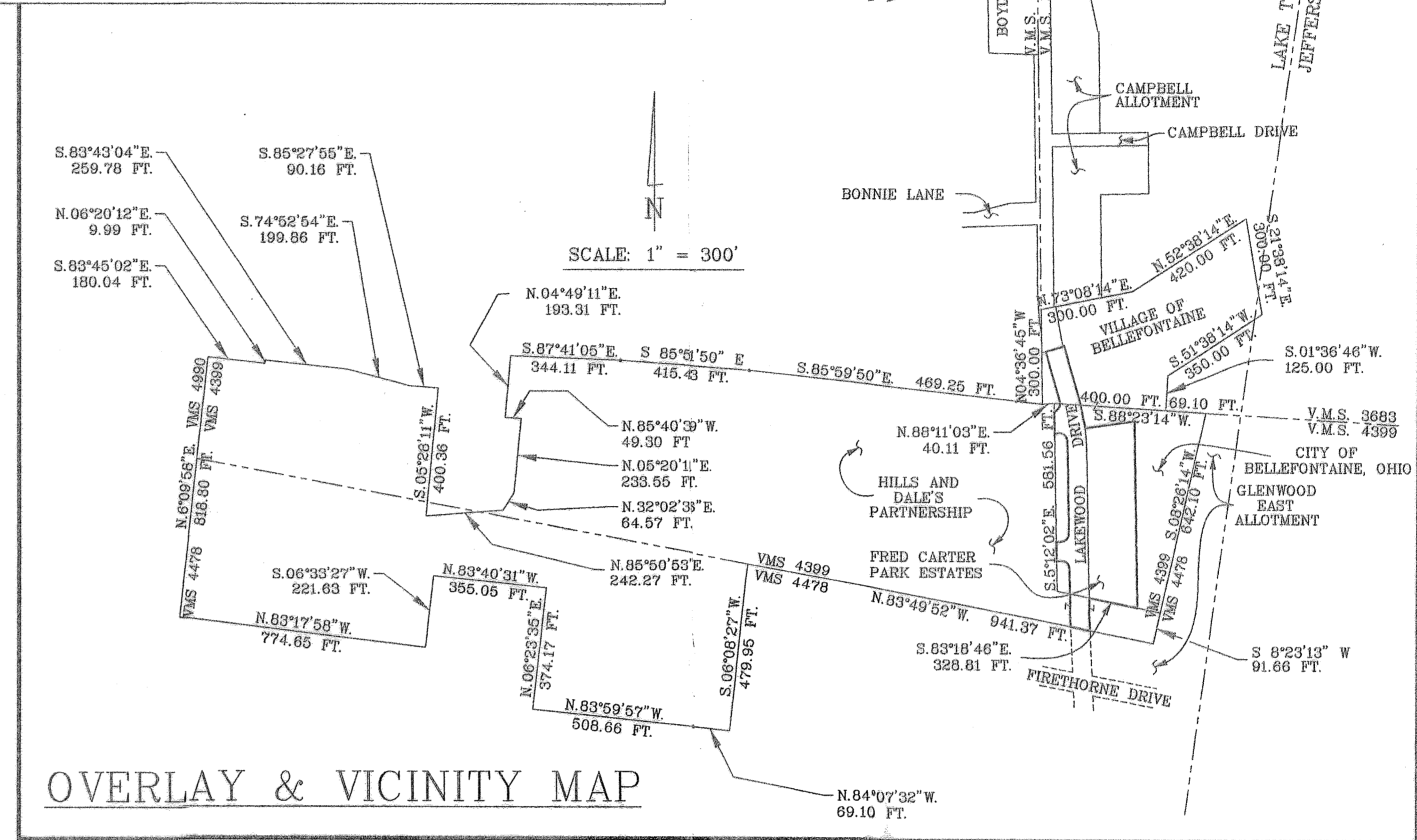
**CURVE DATA**

NUMBER	RADIUS	ARC	DELTA ANGLE	CHORD BEARING	CHORD
C1	25.00'	7.47'	17°06'38"	N. 07°28'46" W.	7.44'
C2	634.00'	16.50'	01°29'27"	S. 15°17'22" E.	16.50'
C3	634.00'	72.55'	06°33'23"	S. 11°15'57" E.	72.51'
C4	570.00'	15.51'	01°33'34"	S. 01°57'18" E.	15.51'
C5	600.00'	16.33'	01°33'34"	N. 01°57'18" W.	16.33'
C6	630.00'	17.15'	01°33'34"	N. 01°57'18" W.	17.15'
C7	25.00'	39.27'	90°00'00"	N. 43°49'29" E.	35.36'
C8	25.00'	39.27'	90°00'00"	N. 43°49'29" E.	35.36'
C9	574.00'	38.24'	03°49'03"	N. 03°05'03" W.	38.24'
C10	25.00'	51.16'	117°15'41"	N. 63°37'25" W.	42.69'
C11	25.00'	24.73'	56°40'11"	N. 29°24'39" E.	23.73'
C12	604.00'	127.52'	12°05'47"	N. 07°13'25" W.	127.28'
C13	604.00'	29.13'	02°45'47"	N. 14°39'12" W.	29.12'
C14	634.00'	75.38'	06°48'44"	N. 04°34'53" W.	75.33'



**SUBDIVIDERS OF PLAT:**  
City of Bellefontaine  
135 N. Detroit St.  
Bellefontaine, Ohio 43311

**NOTE:**  
\* No structure, planting, etc. will be permitted in the easment areas shown.



**DEDICATION**

KNOW ALL MEN BY THESE PRESENTS, that Garon C. Carmean, agent and Service Safety Director for the City of Bellefontaine, proprietor of the land indicated on the accompanying plat, have authorized the platting thereof and do hereby dedicate the streets to the public use forever.

*Tracy Burton*  
*Joyce Bradley*  
Witnesses

*Garon C. Carmean*  
Service Safety Director  
The City of Bellefontaine

STATE OF OHIO  
LOGAN COUNTY

Before me a Notary Public in and for said County, personally came Garon C. Carmean, agent and Service Safety Director for the City of Bellefontaine who acknowledged the signing of the foregoing instrument to be his voluntary act and deed for the uses and purposes therein expressed.

IN WITNESS WHEREOF, I have hereunto set my hand and affixed my official seal this 9th day of November, 2005.

*Kathy J. Robinson*  
Notary Public  
KATHY J. ROBINSON  
NOTARY PUBLIC, STATE OF OHIO  
MY COMMISSION EXPIRES JUNE 24, 2006

**SURVEYOR'S CERTIFICATE**

The accompanying plat represents a subdivision of land in V.M.S. 3683 and 4399, Lake Township, City of Bellefontaine, Logan County, Ohio.

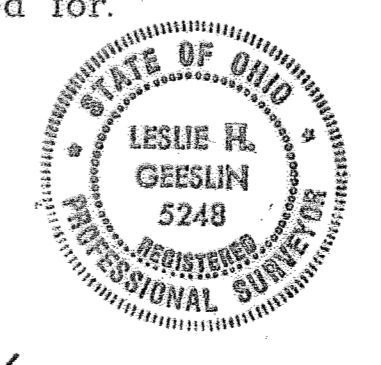
All measurements are in feet and decimals of a foot. All measurements on curves are arc distances.

The tract has an area of 1.331 acres in streets and 1.922 acres in lots, making a total of 3.253 acres. Of the 1.331 acres in streets 0.250 acres are in V.M.S. 3683 and 1.081 acres are in V.M.S. 4399. All of the 1.922 acres in lots are in V.M.S. 4399. All of the lots are out of the City of Bellefontaine's 5,500 acre tract, 0.250 acres of the streets are out of the Village of Bellefontaine's 5,700 acre tract, 0.944 acres are out of the City of Bellefontaine's 5,500 acre tract and 0.137 acres are out of Hill's and Dale's Partnership's 41,644 acre tract.

I hereby certify that the accompanying plat is a correct representation of Fred Carter Park Estates, as surveyed and that all monuments and iron bars as shown hereon have been set or will be set as a part of work that surety is posted for.

o = 5/8" iron bar set  
• = Concrete monument set  
x = 5/8" iron bar found

*Leslie H. Geeslin* 11/15/05  
Leslie H. Geeslin, Reg. Surveyor No. 5248 Date  
P.O. Box 274  
Rushsylvania, Ohio 43348



**APPROVALS**

Plat pre-approval Jan 11/10/05 Plat checked Jan C. 11/27/07

The within streets are hereby approved and accepted for public maintenance by Ordinance No. 97-17 recorded in City council's record book 97 on this 11th day of March, 1997.

*Steve Lutz*  
Mayor, Bellefontaine, Ohio

*William R. Burton*  
President, Bellefontaine City Council

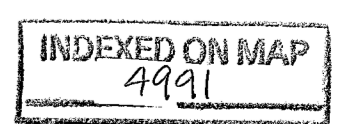
*Linda Jordan*  
Clerk of Council

Approved this 9th day of November 2005.  
*F. L. N. N. N.*  
Bellefontaine City Engineer

Approved this 9th day of November, 2005.  
*Ed Wallace*  
Chairperson, City Planning Commission

Transferred this 10th day of July, 2007.  
*Anne E. Graw*  
Auditor, Logan County, Ohio

Recorded in Plat Cabinet B, Slide 108B  
Received for record at 11:51 AM on this 10th day of July, 2007.  
*Linda Hanson*  
Recorder, Logan County, Ohio



CABINET B SLIDE 108B

2007005154

A-188



4-9-2022

APPROVED

EXCESS FRED CARTER PARK LAND SURVEY

SITUATED IN V.M.S. 4399,  
CITY OF BELLEFONTAINE, LAKE TWP., LOGAN COUNTY, OHIO

EXCESS FRED CARTER PARK LAND SURVEY

BEING LOCATED IN VMS 4399 AND IN THE CITY OF BELLEFONTAINE, LAKE TOWNSHIP, LOGAN COUNTY & STATE OF OHIO AND BEGINNING AT A 5/8" IRON BAR FOUND AT THE NORTHEAST CORNER OF CITY LOT 4958 AS IS RECORDED IN THE FRED CARTER PARK ESTATES SUBDIVISION IN PLAT CABINET B, SLIDE 108B, IN THE LOGAN COUNTY RECORDERS OFFICE AND ALSO BEING IN AN EAST LINE OF THE CITY OF BELLEFONTAINE, OHIO'S 5.500 ACRE TRACT AS DESCRIBED IN D.B. VOL 338 PG 814;

THENCE THROUGH SAID CITY'S 5.500 ACRE TRACT N. 83° 17' 28" E. 223.92 FEET TO A 5/8" IRON BAR FOUND AT THE COMMON LOT CORNER OF CITY LOTS 4587 & 4588 AT THE NORTHWEST CORNER OF THE GLENWOOD EAST ALLOTMENT IV SUBDIVISION AS IS RECORDED IN PLAT CABINET A SLIDE 775-B OF THE LOGAN COUNTY RECORDERS OFFICE, SAID IRON BAR ALSO BEING THE NORTHEAST CORNER OF SAID CITY'S 5.500 ACRE TRACT AND BEING IN THE NORTH LINE OF VMS 4399 AND IN THE SOUTH LINE OF VMS 3683 & IN THE SOUTH LINE OF THE CITY OF BELLEFONTAINE, OHIO'S 17.190 ACRE TRACT AS IS RECORDED IN D.B. VOL 333, PAGE 820, TRACT II;

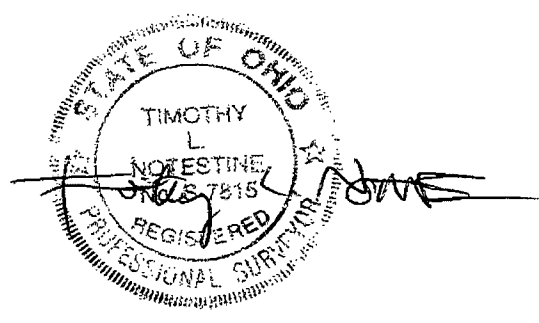
THENCE ALONG THE COMMON WEST LINE OF SAID CITY LOT 4588 & LOT 4589 AND ALSO OF SAID GLENWOOD EAST ALLOTMENT IV AND THE WEST LINES OF CITY LOTS 4596 & 4597 OF GLENWOOD EAST ALLOTMENT III AS IS RECORDED IN PLAT CABINET A SLIDE 745B OF THE LOGAN COUNTY RECORDERS OFFICE S. 12°34' 48" W. 638.65 FEET TO A 5/8" IRON BAR FOUND AT THE NORTH EAST CORNER OF RICKY DEAN & MARY M. GILDOW'S 0.466 ACRE TRACT AS IS RECORDED IN O.R. VOL 1124, PAGE 910;

THENCE ALONG THE NORTH LINE OF SAID GILDOW 0.466 ACRE TRACT AND SOUTH LINE OF SAID CITY, 5.500 ACRE TRACT N. 78°-40'-46" W. 72.74 FEET TO A 5/8" IRON BAR FOUND AT THE SOUTHEAST CORNER OF CITY LOT 4953 OF SAID FRED CARTER PARK ESTATES;

THENCE ALONG THE WEST LINE OF SAID FRED CARTER PARK ESTATES & CITY LOTS 4953 THRU 4958 N. 1° 10' 31" W. 583.00 FEET TO THE PLACE OF BEGINNING.

CONTAINING 2.025 ACRES MORE OR LESS AND BEING A PORTION OF SAID CITY'S 5.500 ACRE TRACT.

DESCRIPTION PREPARED BY TIMOTHY L. NOTESTINE, P.E., P.S. 7815 FROM A FIELD SURVEY ON MAY 6, 2021

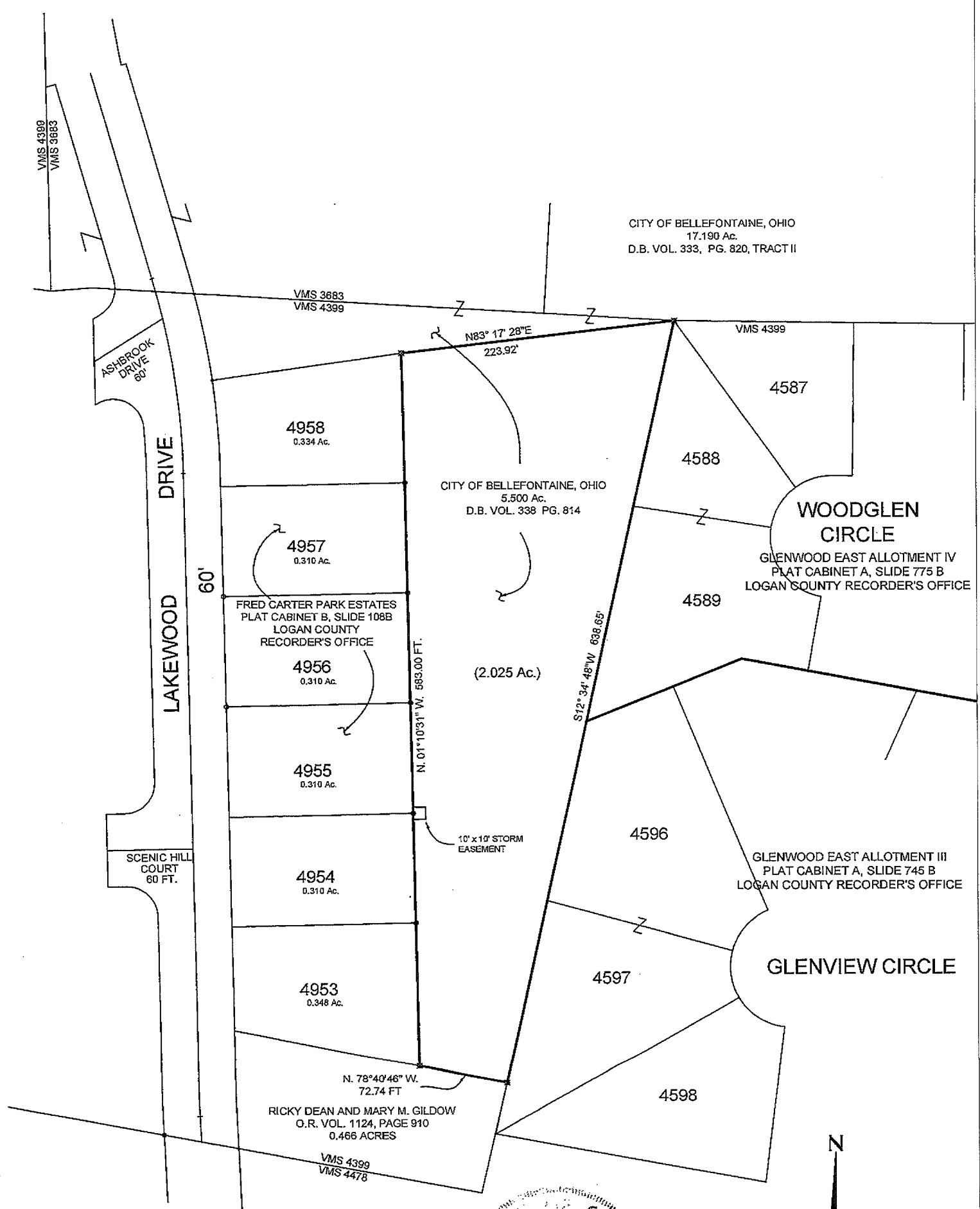


INDEXED ON MAP  
4991

4-5-2022  
APPROVED

EXCESS FRED CARTER PARK LAND SURVEY

SITUATED IN V.M.S. 4399,  
CITY OF BELLEFONTAINE, LAKE TWP., LOGAN COUNTY, OHIO



CITY OF BELLEFONTAINE, OHIO  
17.190 Ac.  
D.B. VOL. 333, PG. 820, TRACT II

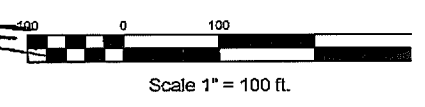
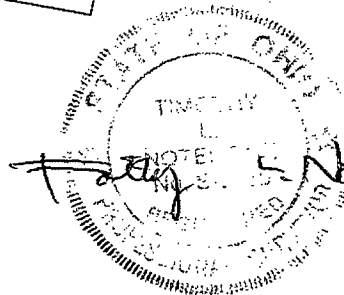
CITY OF BELLEFONTAINE, OHIO  
5.500 Ac.  
D.B. VOL. 338 PG. 814

WOODGLEN CIRCLE  
GLENWOOD EAST ALLOTMENT IV  
PLAT CABINET A, SLIDE 775 B  
LOGAN COUNTY RECORDER'S OFFICE

GLENWOOD EAST ALLOTMENT III  
PLAT CABINET A, SLIDE 745 B  
LOGAN COUNTY RECORDER'S OFFICE

GLENVIEW CIRCLE

INDEXED ON MAP  
4991



5/8" IRON BAR FOUND