

Levan-Kelly  
to  
Racquet Club of Bellefontaine, Inc.

The following described real estate situated in the Township of Harrison, County of Logan, State of Ohio and being a part of Section 5, Town 3, Range 14 and being more particularly described as follows:

Beginning at an iron at the northwest corner to the Racquet Club of Bellefontaine, Inc.'s present 1.97 Acre tract, said iron bar being N. 0° 16' W. 235.00 feet from a point in the centerline of West Columbus Ave. which is also the south line of Section 5;

Thence N. 0° 16' W. 91.50 feet to a point in the centerline of S. R. No. 47, West Sandusky Ave. at Station 646+24.31 of the S. R. No. 47 as shown on Plan L-51, Page 12, Logan County Engineers Office; passing through the right of way line of S. R. No. 47 at 22.50 feet;

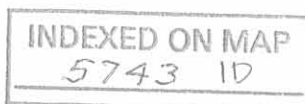
Thence with a chord of a curve, N. 74° 54.5' E. 338.36 feet to a point on said curve, being Station 649+61.67, said curve has the following characteristics, Central Angle - 17° 05' 30" Right, Degree of Curve - 1° 12', Radius - 4,774.65 feet, Tangent-717.48 feet;

Thence S. 13° 04.4' E. 180.00 feet to an iron at the northeast corner to the Racquet Club of Bellefontaine, Inc.'s property; passing through the right of way line of S. R. No. 47 at 70.50 feet;

Thence with the north line of said Racquet Club's property, S. 89° 20' W. 367.00 feet to the place of beginning, containing 1.084 Acres, of which 0.554 Acres is in the right of way of S. R. No. 47.

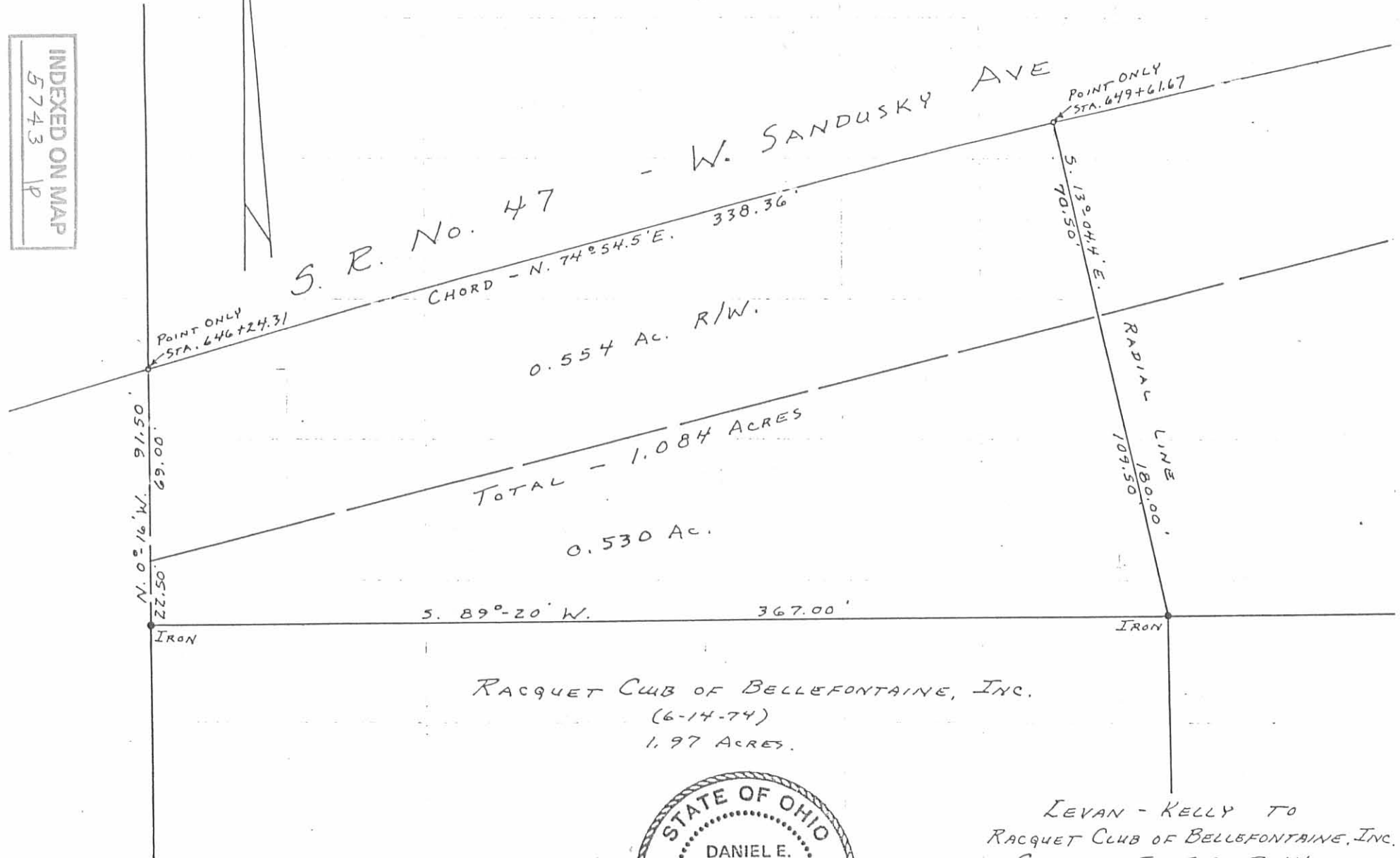
The above described real estate being out of the southend of Lowell E. Levan etal present 6.27 acre tract.

I hereby certify that this is a true and accurate description as prepared by me on July 9, 1974.



*Daniel E. Gilbert*  
Daniel E. Gilbert, P.S.  
Reg Sur. No. 5402

INDEXED ON MAP  
5743  
1P



PLATTED BY:  
DANIEL E. GILBERT, P.S.  
REG. SUR. No. 5402  
1041 N. MAIN ST.  
BELLEFONTAINE, OHIO 43311



LEVAN - KELLY TO  
RACQUET CLUB OF BELLEFONTAINE, INC.  
SECTION 5 T. 3 R. 14  
HARRISON TOWNSHIP  
LOGAN COUNTY, OHIO  
JULY 9, 1974  
SCALE: 1" = 50'

LEVAN - KELLY PROPERTY  
SECTION 5 TOWN 3 RANGE 14  
CITY OF BELLEFONTAINE  
HARRISON TOWNSHIP  
LOGAN COUNTY, OHIO  
JUNE 1972

SCALE: 1" = 100'



TRACT I  
TOTAL - 13.260 ACRES  
1.491 AC. IN R/W's  
11.769 ACRES

Q CURVE DATA  
P.I. STA. 653+01.00  
Δ = 17°-05'-30" RT.  
DC = 1°-12'  
R = 4774.65'  
T = 717.48'  
E\* = 53.61'  
Lc = 1424.31'

S. R. No. 47  
ARC Dis. = 578.70'  
ARC Dis. = 453.70'

TRACT II  
1.490 ACRES  
0.722 AC. IN R/W.  
0.768 ACRES

CITIZENS FED. SAV. & LOAN ASSOC.  
(4-27-7)  
1.97 ACRES

CITY OF BELLEFONTAINE  
BOARD OF EDUCATION  
12.20 ACRES

PLATTED BY:  
DANIEL E. GILBERT, P.S.  
REG. SUR. NO. 5402  
1041 N. MAIN ST.  
BELLEFONTAINE, OHIO 43311

INDEXED ON MAP  
5743 2P