

REC'D 2-14-06 SMJ/OK

DAKOTA ROAD (50')

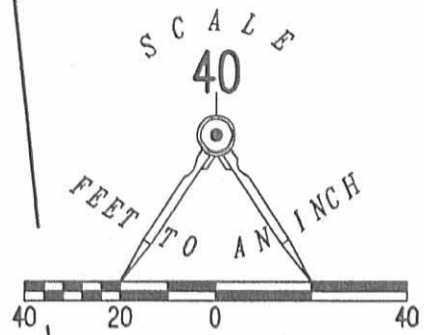
LEGEND:

- ⊙ 1 INCH IRON PIPE FOUND
- ⊘ 4 INCH STEEL FENCE POST FOUND
- 5/8 INCH IRON ROD SET

MAPLE HILL SUBDIVISION NO. 2
PLAT CABINET A, SLIDE 509

LOT 4188

PATRICK K. ELLIS
VOL. 406, PG. 98



N 05°57'35" W
426.85'

(LOT 4188)
(LOT 4332)

N 83°56'00" E
180.86'

MAPLE HILL SUBDIVISION NO. 3
PLAT CABINET A, SLIDE 561

LOT 4269

KATHERINE J. McMILLEN
O.R. 791, PG. 852
TRACT 1

30.00'

PART OF LOT 4334

(LOT 4332)
(LOT 4333)

CHARLES W. ARNETT AND
SHERRY L. ARNETT
VOL. 362, PG. 606

215.50'
S 06°06'15" E

ALLISON ROAD (60')

N 05°57'35" W
306.49'

LOT 4333

S 63°09'43" W
29.00'

DAVID A. YOUNGMAN, ET AL
ORIGINAL 54.541 ACRES
VOL. 390, PG. 998

S 56°20'47" W
174.27'



ORIGINAL STAMP IN GREEN

2 WORKING DAYS
BEFORE YOU DIG
CALL TOLL FREE 800-362-2764
OHIO UTILITIES PROTECTION SERVICE.

V.M.S. 5245
V.M.S. 4990

RETRACEMENT SURVEY OF THE
CHARLES W. ARNETT AND
SHERRY L. ARNETT
LOT 4333 AND PART LOT 4332
MAPLE HILL SUBDIVISION NO.3
PLAT CABINET A, SLIDE 561
VOLUME 362, PAGE 606
VIRGINIA MILITARY SURVEY 5245
CITY OF BELLEFONTAINE
LAKE TOWNSHIP
LOGAN COUNTY, OHIO

SURVEYED BY:

JEFFREY I. LEE
PROFESSIONAL SURVEYOR 6359
FEBRUARY 7, 2006

COPYRIGHT 2006 BY:
LEE SURVEYING & MAPPING CO., INC.
117 North Madriver Street
BELLEFONTAINE, OHIO 43311
(937) 593-7335

KSR D0206 4178016 L-4178-3

INDEXED ON MAP
5757 IP

PART LOTS 4188 & 4332

Bellefontaine, Ohio

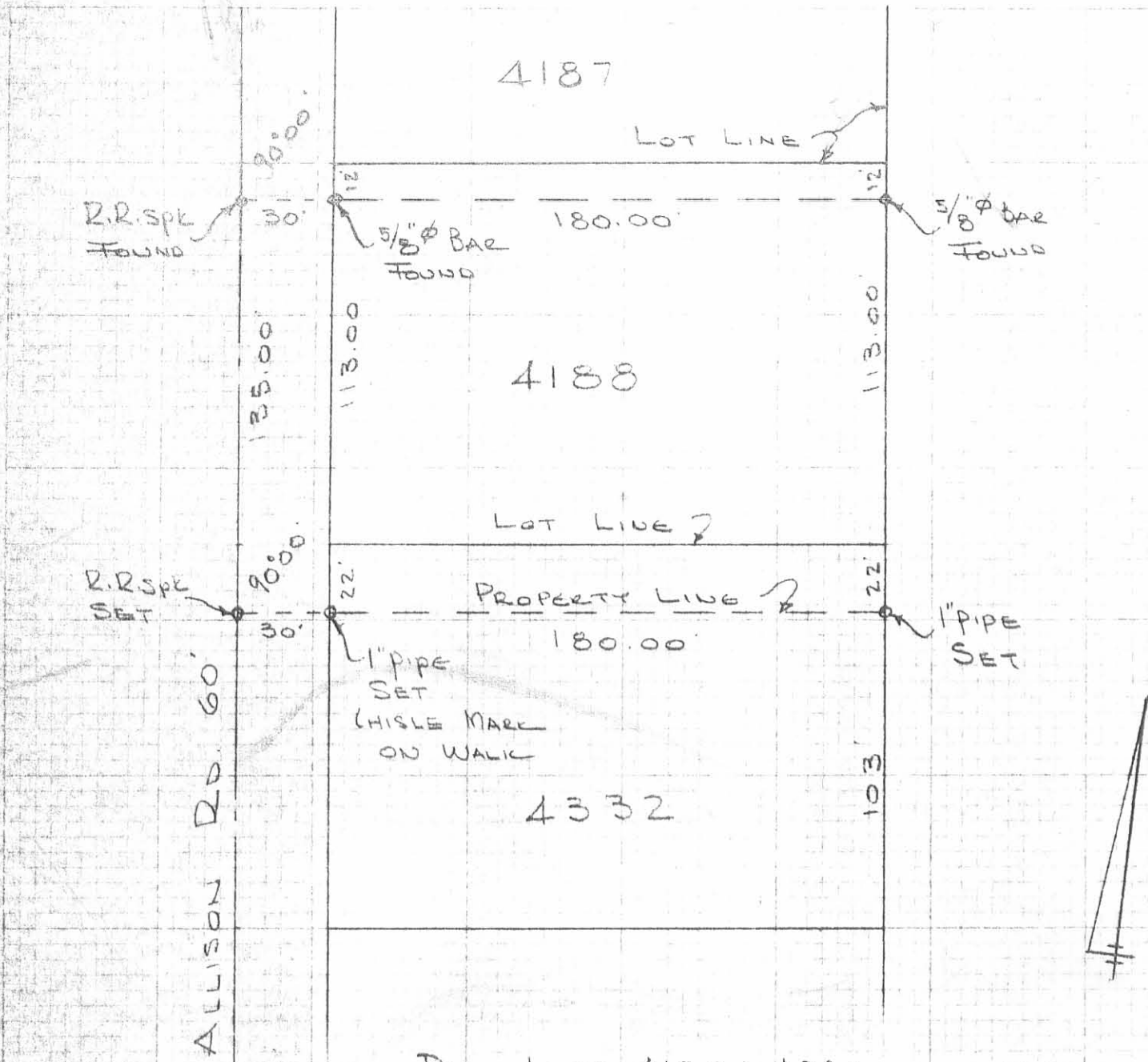
July 5, 1975

The following described real estate situated in the City of Bellefontaine, Lake Township, Logan County, Ohio and being part of lot 4188 of Maple Hill Subdivision No. 2 and part of lot 4332 of Maple Hill Subdivision No. 3 and being more particularly described as follows:

Being lot 4188, except 12.0 feet off the north side thereof.

Being 22.0 feet off the north side of lot 4332.





PART LOTS 4188 & 4332

BELLEFONTAINE, OHIO

JULY 5, 1975

SCALE 1" = 50'

REF:
 MAPLE HILL No. 2
 PLAT BK G, Vol. F, Pg. 23
 MAPLE HILL No. 3
 PLAT BK G, Vol. F, Pg. 73

DESCRIPTION:
 LOT 4188, EXCEPT 12 FEET
 OFF THE NORTH SIDE.
 22 FEET OFF THE NORTH
 SIDE OF LOT 4332

(5757) 2P

INDEXED ON MAP

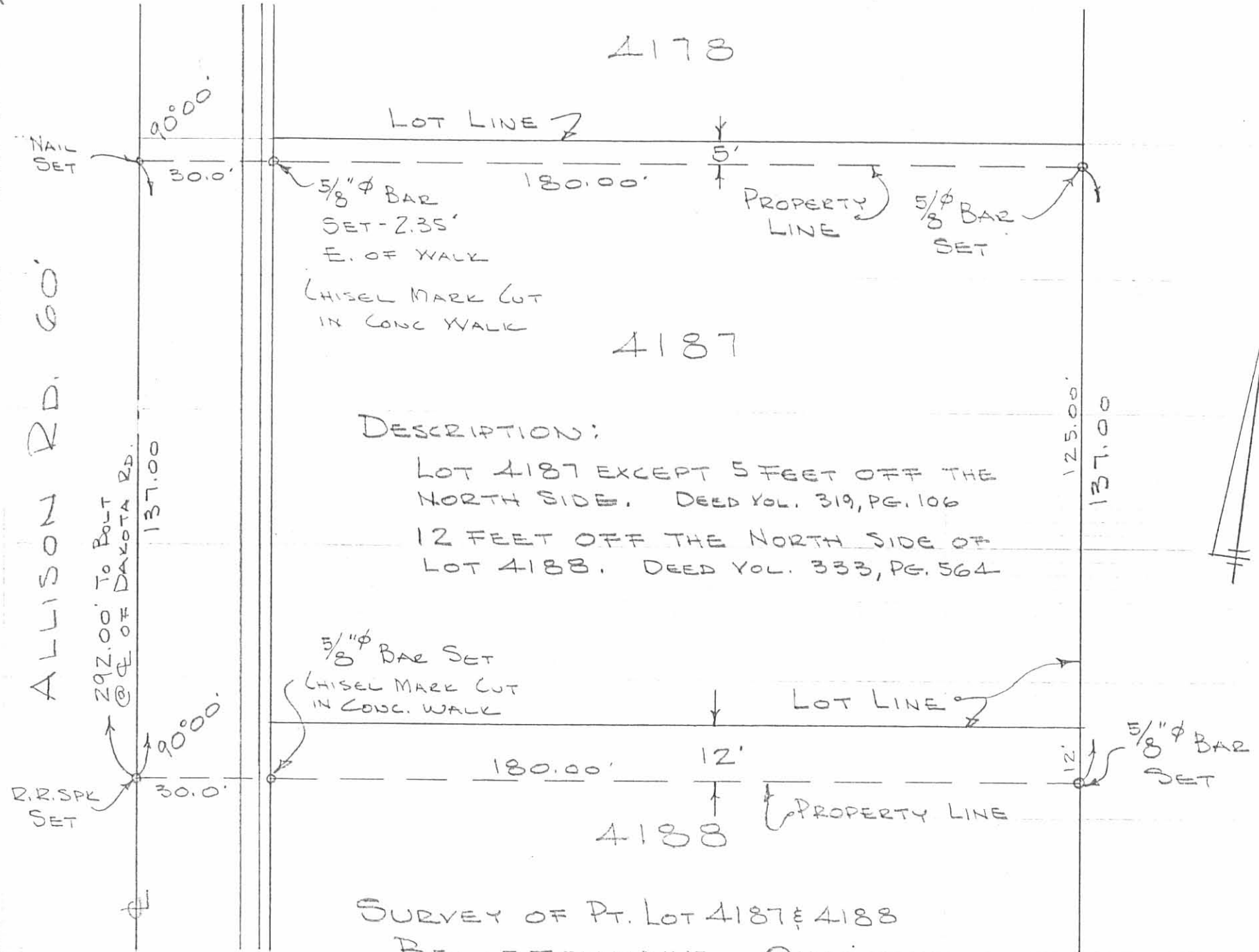
DAN L. DODSON
 REG. SURVEYOR 427
 BELLEFONTAINE, OHIO



10/28/72

REUFFEL & LEACH, CO.

ALISON RD. 60'



DESCRIPTION:

LOT 4187 EXCEPT 5 FEET OFF THE NORTH SIDE. DEED VOL. 319, PG. 106
 12 FEET OFF THE NORTH SIDE OF LOT 4188. DEED VOL. 333, PG. 564

INDEXED ON MAP
 5757 3P

SURVEY OF Pt. LOT 4187 & 4188
 BELLEFONTAINE, OHIO
 OCTOBER 28, 1972
 SCALE 1" = 30'

DAN L. DOOSON
 REG. SURVEYOR 4270
 BELLEFONTAINE, O.
 BK. 19/35

Pt. Lot 4187 & 4188

BELLEFONTAINE

MAPLE HILL No. 2

A = 1" ϕ BAR END @ E OMAHA & ALLISON

B = D. BOLT END

C = P.K. NAIL SET

D = R.R. SPK. SET

E = 5/8" ϕ BAR SET - CHISEL MARK ON WALL

F = " " " " " "

G = R.R. SPK. SET

H = 5/8" ϕ BAR SET 1'S. of power pole

I = 5/8" ϕ BAR SET

F = 2.35 E. of loc. walk

DR. MUNN

Vol. 319 pg 106 4187 EX. 5' OFF N.

Vol 383 pg 564 12' OFF N. 3106 4188

INDEXED ON MAP
5757

Dodson
Archie

10/28/72
55°

35

