

LESLIE H. GEESLIN
REGISTERED SURVEYOR NO. 5248
P. O. BOX 274
RUSHSVLVANIA, OHIO 43347



TELEPHONE: (513) 468-2793

RYU SURVEY

August 31, 1990

Leslie H. Geeslin

The following described real estate situated in the State of Ohio, County of Logan, Township of Lake, being part of Lot 4391 of Brookwood Addition No. 7 to the City of Bellefontaine in Virginia Military Survey 4399 and more particularly described as follows:

Beginning at a 5/8 inch iron bar set in the west line of Newford Drive at the southeast corner of Lot 4384.

Thence with the west line of said Newford Drive S. 53°20'54" E. 107.26 feet to a 5/8 inch iron bar set.

Thence with said west line on a 278.10 foot radius curve to the right, the chord of which measures S. 35° 21' 58" E. 171.72 feet, to a 5/8 inch iron bar set.

Thence with said west line of Newford Drive S. 17° 23' 15" E. 69.20 feet to a 5/8 inch iron bar set.

Thence with said west line on a 40.00 foot radius curve to the right, the chord of which measures S. 27° 36' 45" W. 56.56 feet, to a 5/8 inch iron bar set in the north line of Sandusky Avenue.

Thence with said north line N. 72° 36' 54" W. 199.34 feet to a 5/8 inch iron bar set.

Thence N. 17° 23' 15" W. 296.07 feet to a 5/8 inch iron bar found at the southwest corner of Lot 4384.

Thence with the south line of said Lot 4384 N. 45° 27' 34" E. 138.63 feet to the place of beginning

Containing 1.654 acres more or less

The above described 1.645 acre tract being on the east side of Lot 4391 of Brookwood Addition No. 7 as shown in Cabinet "A" on Slide 589 in the Logan County Recorders Office.

Bearings are based on the west line of Newford Drive (S.53° 20' 54" E.) as taken from the dedicated plat of Brookwood Addition No. 7 in this field survey as performed by Leslie H. Geeslin, Reg. surveyor 5248 on August 31, 1990

INDEXED ON MAP
6046 1D

HILLTOP DRIVE

LOT 4382

LOT 4383

LOT 4384

LEGEND:

A = 5/8" IRON BAR FD.
B = 5/8" IRON BAR SET
C = PK. NAIL FD.

LOT 4391

1.645 AC.

NEWMEADOW DRIVE (60')

DRIVE (60')

278.10' RADIUS

171.72'
5.35° 21' 58" E.

107.26'
5.53° 20' 54" E.

93.31'

69.20'
5.17° 23' 15" E.
56.56'
40.00' RADIUS
5.27° 36' 45" W.

199.54'

N. 72° 36' 54" W.

N. 17° 23' 15" W.

N. 45° 27' 34" E.
138.63'

75.25'
74.93'

SANDUSKY AVE. (60')

SURVEY OF 1.645 ACRE TRACT
OFF OF EAST SIDE OF LOT NO
4391 OF BROOKWOOD ADDITION
NO 7 TO THE CITY OF BELLFONTAINE,
OHIO.

AUGUST 31, 1990
SCALE: 1" = 50'

INDEXED ON MAP
6046 1P

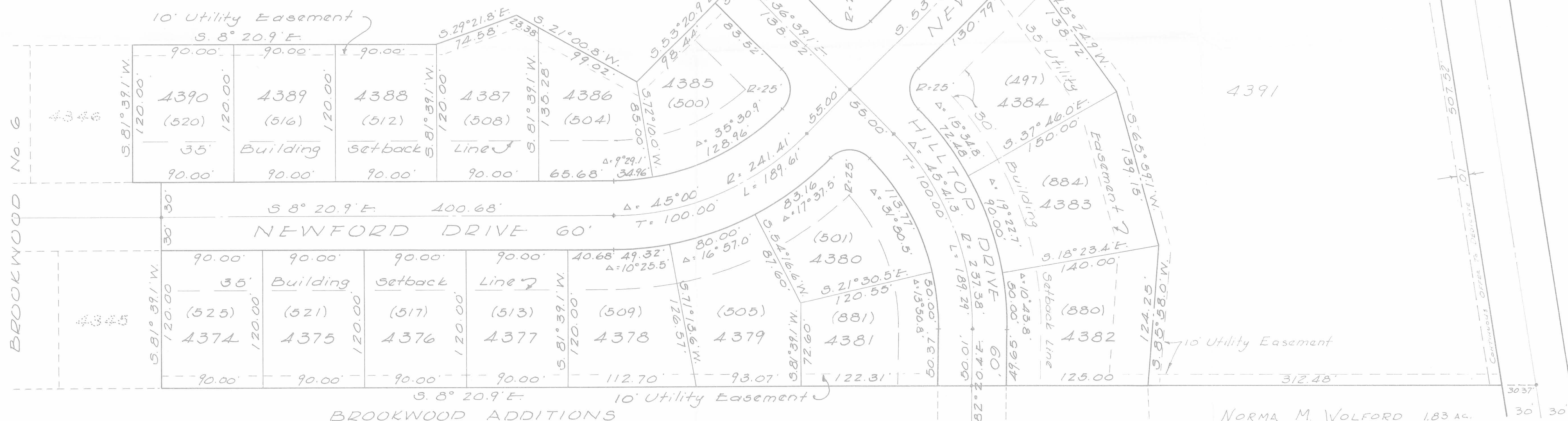
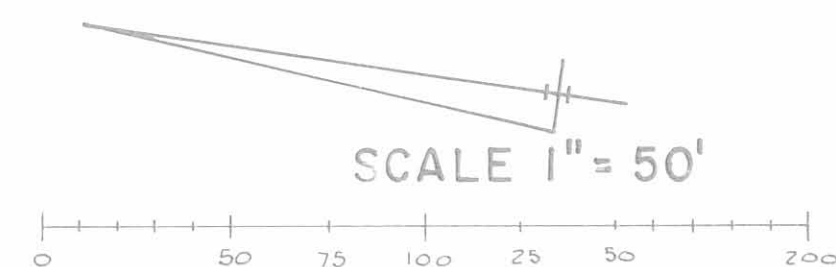
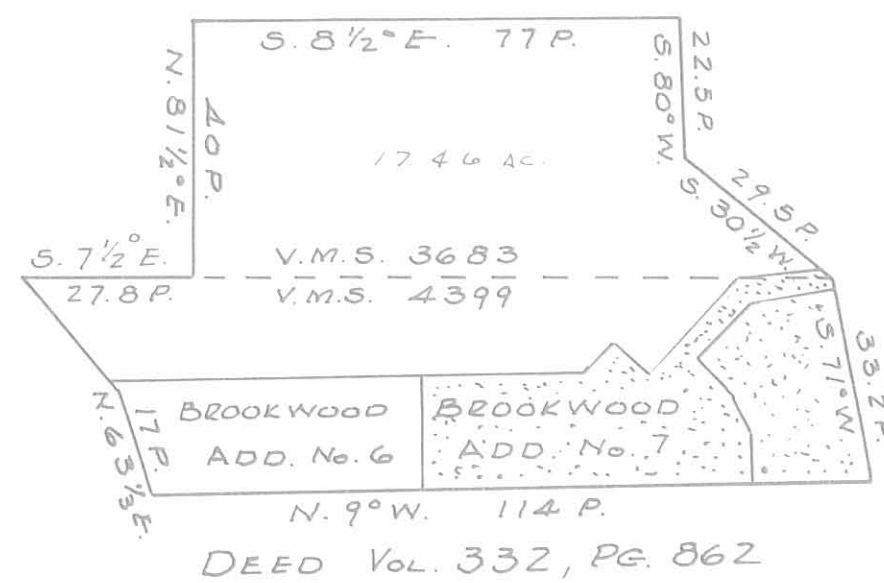


Leslie H. Geeslin
LESLIE H. GEESLIN
RUSHSVLVANIA, OHIO
PH 513-463-2773

The accompanying plat represents a Subdivision of land in V.M.S. 4399 and V.M.S. 3683, City of Bellefontaine, Lake Township, Logan County, Ohio. The tract has an area of 8.33 acres in lots and 2.64 acres in streets of which 0.15 acres are in V.M.S. 3683, making a total of 10.97 acres. All measurements are in feet and decimals of a foot. All measurements on curves are chord distances. * Indicates Iron Bar.

I hereby certify that the accompanying plat is a correct representation of BROOKWOOD ADDITION No. 7 as surveyed by me in October, 1974.

Dan L. Dodson
 Dan L. Dodson
 Reg. Surveyor 4270
 Bellefontaine, Ohio



Numbers shown thus on lots (525) are City of Bellefontaine house numbers.

Easements for construction and maintenance of public and private utilities, unless otherwise shown, are ten feet in width centered on all side lot lines and ten feet in width adjacent to all rear lot lines.

the within lots transferred this 14th day of JUNE 1974.

Mary H. Schuler
 Auditor of Logan County

Received for record at 11:40 O'clock A.M. on the 14th day of JUNE 1974.
 Instrument No. 235500
 Recorded in Plat Book 606, Volume Page 100.

Carmen Rubin
 Recorder of Logan County

KNOW ALL MEN BY THESE PRESENTS that L.P.Z. Construction Co. Inc., proprietors of the land indicated on the accompanying plat have authorized the platting thereof and do hereby dedicate the streets to the public use forever, also a continuous offer to dedicate a ten (10) foot strip along the south side of Lot 4391 as indicated.

Lorena J. Zell
 President
Lorena J. Zell
 Witness
Lorena J. Zell
 Secretary-Treasurer
 L.P.Z. Construction Company, Inc.

STATE OF OHIO
 COUNTY OF LOGAN 55
 Be it remembered that on this the 2nd day of December in the year of our Lord One Thousand Nine Hundred and Seventy six, before me a notary Public in and for said County, personally came Lavern F. Zell, President and Gordon L. Zell, Secretary-Treasurer, officers of L.P.Z. Construction Company Inc., grantors in the foregoing dedication who acknowledged the signing thereof to be their free and voluntary act and deed as such officers and the free and voluntary act and deed of said Corporation.
Eleanore Daring
 Notary Public
 May 26, 1977
 My Commission Expires

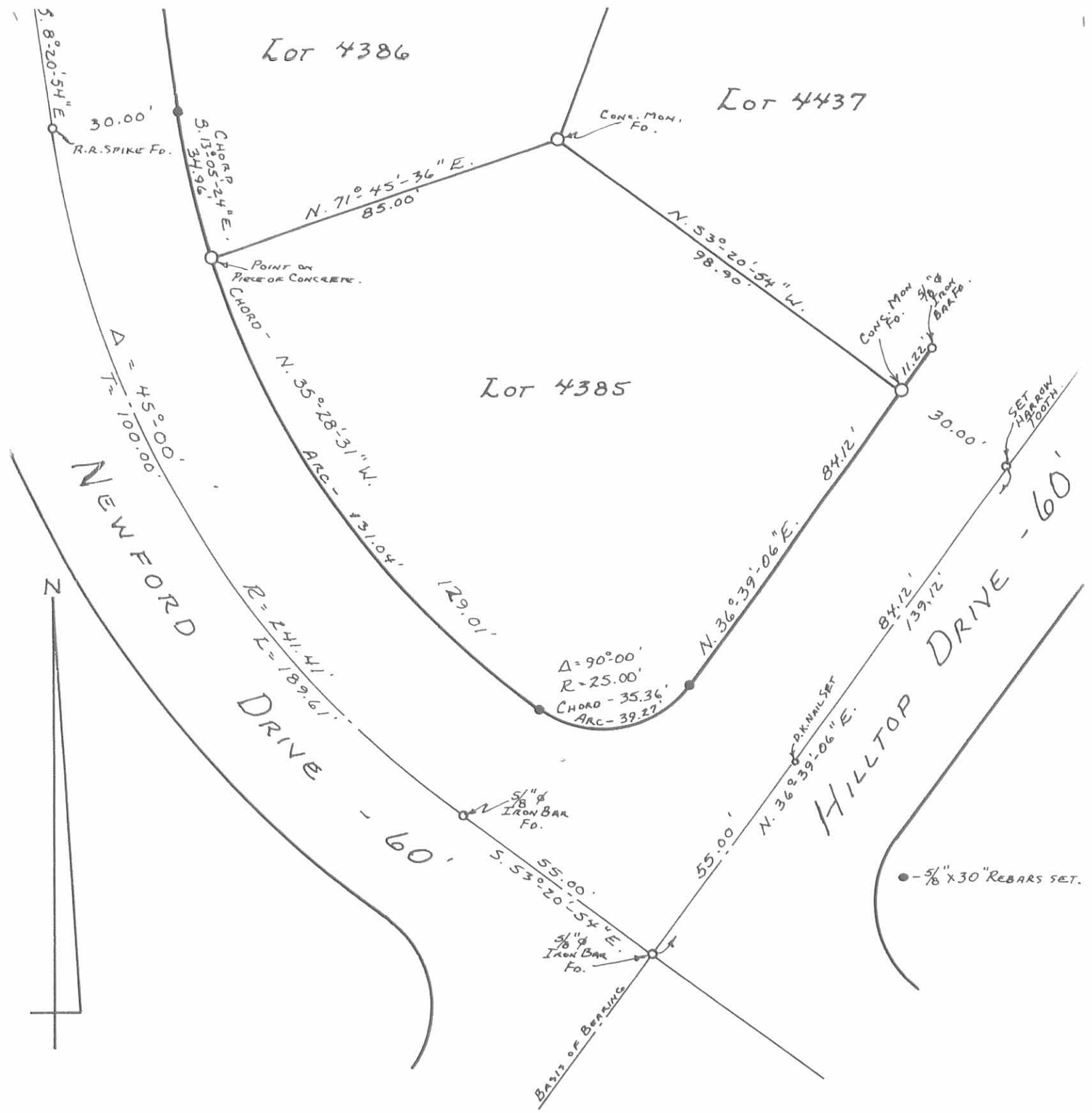
Approved by the Planning Commission this 16th day of November 1976.
Charles R. ...
 Chairman
 Bellefontaine Planning Commission

The accompanying plat was adopted by Ordinance No. 11-21 as an addition to the City of Bellefontaine at a regular meeting of the City Council on the 22nd day of April 1976.
William ...
 Mayor
Anthony E. Prodomo
 Clerk
Clinton W. ...
 President of Council

BROOKWOOD ADDITION NO. 7
 BELLEFONTAINE, OHIO
 V.M.S. 4399 V.M.S. 3683
 LAKE TOWNSHIP LOGAN COUNTY

Approved this 21st day of December 1976.
Michael W. How P.E.
 City Engineer
 Bellefontaine, Ohio

INDEXED ON MAP 606A



INDEXED ON MAP
6046 3P

Daniel E. Gilbert
 DANIEL E. GILBERT, P.S.
 REG. SUR. No. 5402
 400 N. PARK ST.
 BELLEFONTAINE, OHIO
 43311



SURVEY OF LOT 4385
 BROOKWOOD ADDITION No. 7
 CITY OF BELLEFONTAINE
 LAKE TOWNSHIP
 LOGAN COUNTY, OHIO
 SEPTEMBER 12, 1988

SCALE: 1" = 30'

088-074