

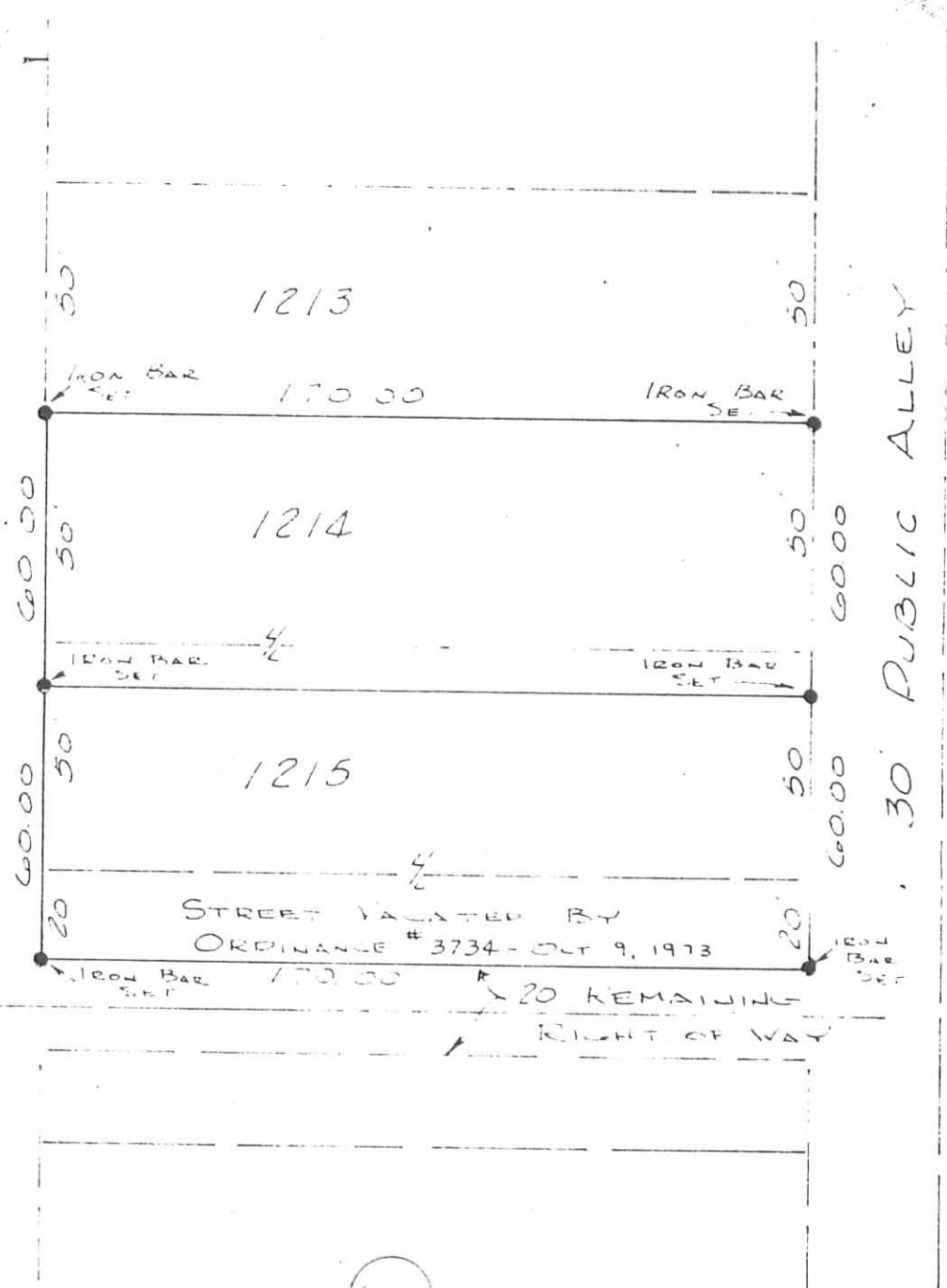


SCALE 1"=40'

LINDEN ST.

30' PUBLIC ALLEY

HIGHLAND



6087 IP

ENCLOSURE

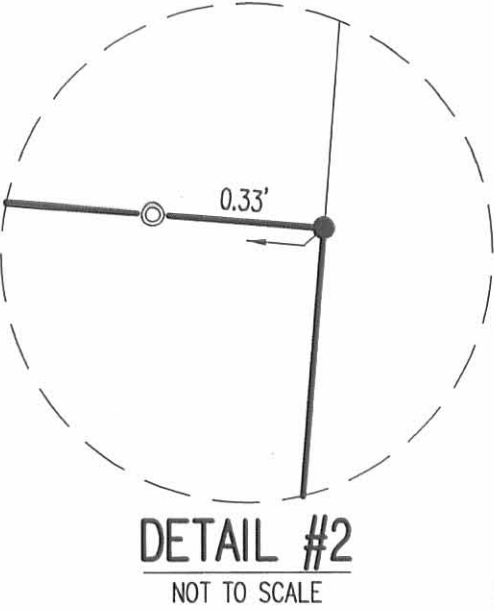
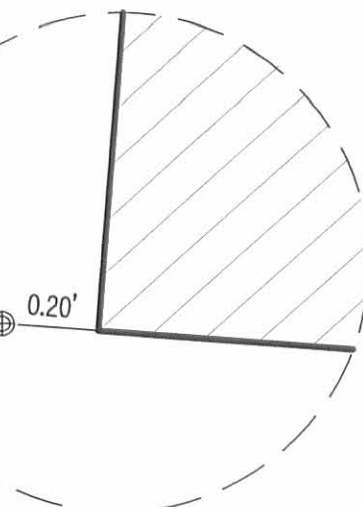
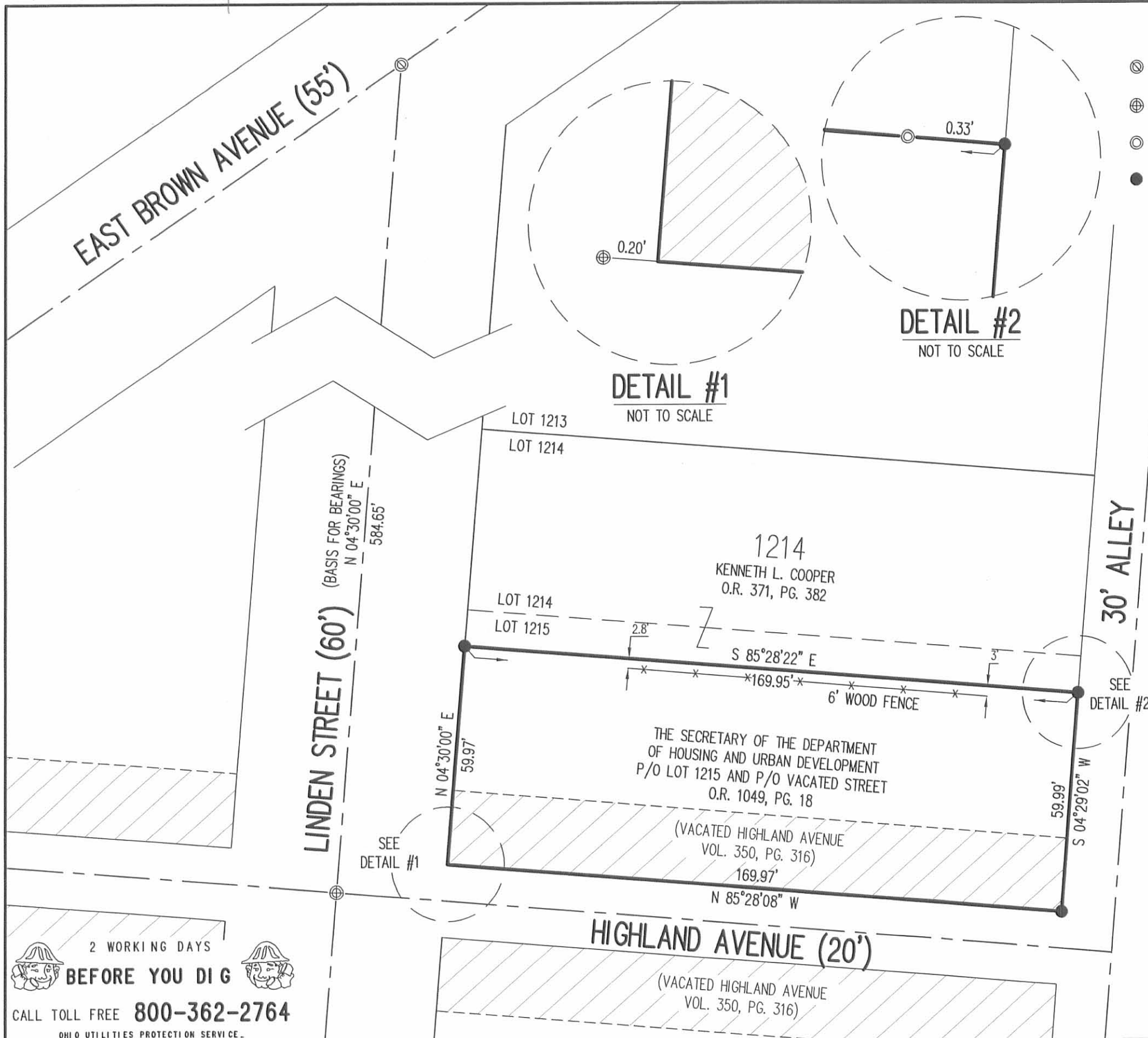
A SURVEY OF LOTS # 1214 & 1215 FOR MR & MRS G.W. DAUM
 AT 500 & 504 LINDEN ST., BELLEFONTAINE, O.
 OCTOBER 4, 1977

BY LARRY E. BLOSSER
 SIT # 1199

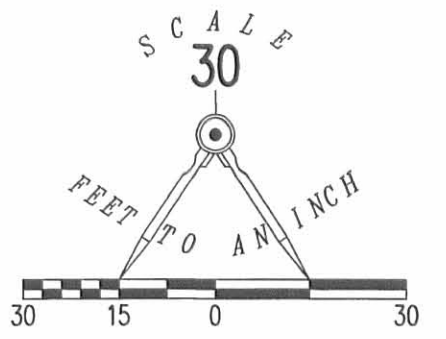
CHECKED BY CECIL E. MENGE

REGISTERED SURVEYOR # 3/51

REC'D 1-6-12 smy on



- LEGEND:
- ⊙ 1 INCH IRON BAR FOUND
 - ⊕ 3/4 INCH IRON BAR FOUND
 - ⊙ 3/4 INCH IRON ROD FOUND
 - 5/8 INCH IRON ROD SET WITH PLASTIC I.D. CAP STAMPED "LSM 7437"



RETRACEMENT SURVEY OF
THE SECRETARY OF THE DEPARTMENT
OF HOUSING AND URBAN DEVELOPMENT
PART OF LOT 1215
BROWN HIGHLAND ADDITION
PLAT CABINET A, SLIDE 19
AND PART OF VACATED HIGHLAND AVENUE
(VOLUME 350, PAGE. 316)
OFFICIAL RECORD 1049, PAGE 18
CITY OF BELLEFONTAINE
LAKE TOWNSHIP
LOGAN COUNTY, OHIO

SURVEYED BY:

William K. Bruce
WILLIAM K. BRUCE
PROFESSIONAL SURVEYOR 7437
JANUARY 4, 2012



ORIGINAL STAMP IN GREEN

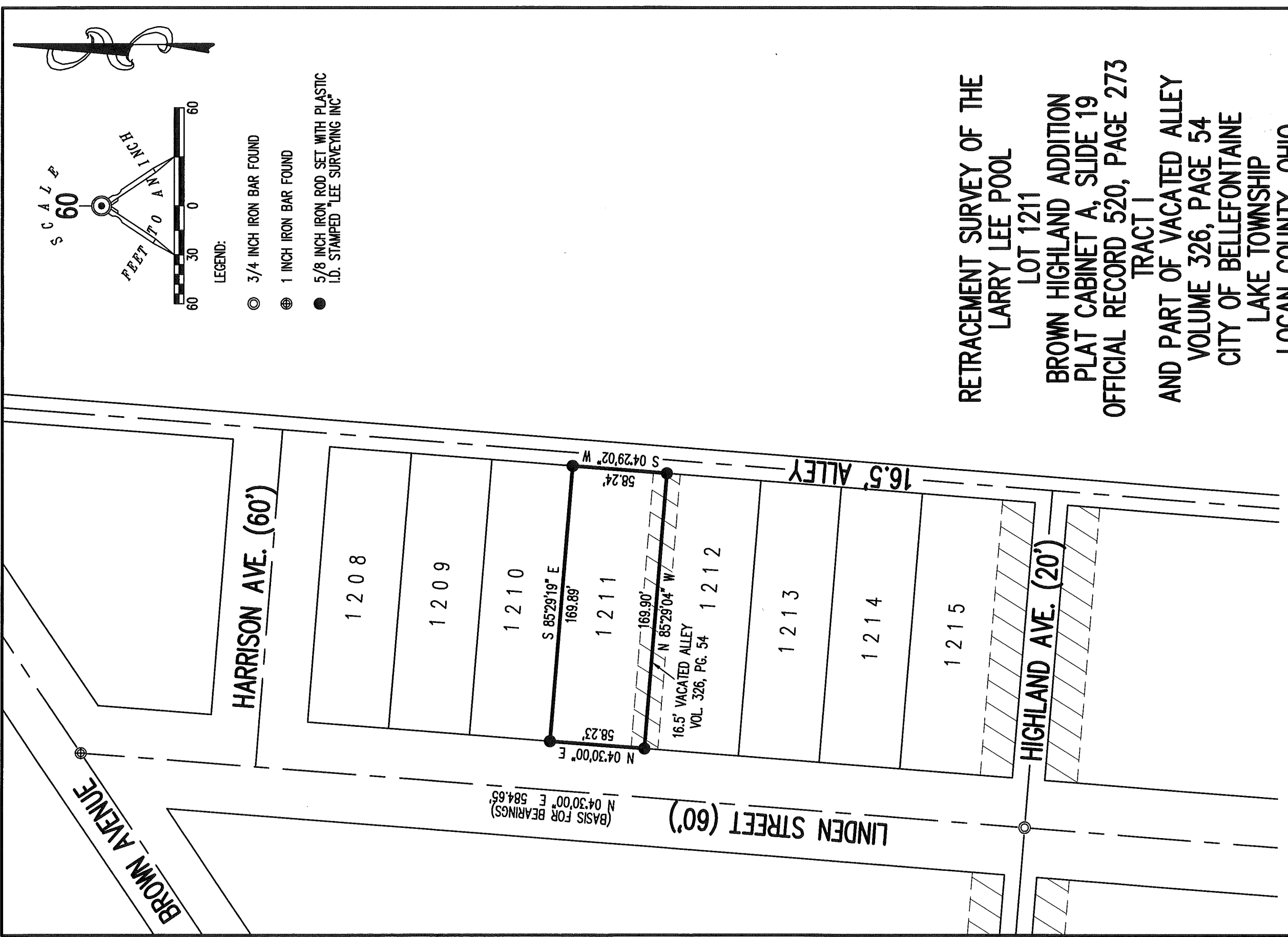
COPYRIGHT 2012 BY:
LEE SURVEYING & MAPPING CO., INC.
117 North Madriver Street
BELLEFONTAINE, OHIO 43311
(937) 593-7335
WWW.LSMINC.US
surveys@lsminc.us
KSS D1211 52511211 L-5251-3

2 WORKING DAYS
BEFORE YOU DIG
CALL TOLL FREE 800-362-2764
OHIO UTILITIES PROTECTION SERVICE

INDEXED ON MAP
6089 2P

10-31-17

APPROVED



(BASIS FOR BEARINGS)
N 04°30'00" E 584.65'

N 04°30'00" E 58.23'

S 85°29'19" E 169.89'

S 04°29'02" W 58.24'

16.5' VACATED ALLEY
VOL. 326, PG. 54

N 85°29'04" W 169.90'

1213

1214

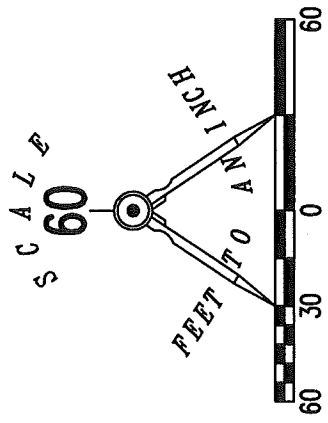
1215

LINDEN STREET (60')

HARRISON AVE. (60')

HIGHLAND AVE. (20')

16.5' ALLEY



LEGEND:

- 3/4 INCH IRON BAR FOUND
- ⊙ 1 INCH IRON BAR FOUND
- 5/8 INCH IRON ROD SET WITH PLASTIC I.D. STAMPED "LEE SURVEYING INC"

RETRACEMENT SURVEY OF THE
LARRY LEE POOL
LOT 1211
BROWN HIGHLAND ADDITION
PLAT CABINET A, SLIDE 19
OFFICIAL RECORD 520, PAGE 273
TRACT I
AND PART OF VACATED ALLEY
VOLUME 326, PAGE 54
CITY OF BELLEFONTAINE
LAKE TOWNSHIP
LOGAN COUNTY, OHIO

SURVEYED BY:

Jeffrey L. Lee
JEFFREY L. LEE
PROFESSIONAL SURVEYOR 6359
OCTOBER 10, 2017



THIS SURVEY WAS PREPARED IN THE ABSENCE OF
A COMPLETE AND ACCURATE TITLE SEARCH AND
DOES NOT GUARANTEE TITLE.

2 WORKING DAYS
BEFORE YOU DIG

CALL TOLL FREE **800-362-2764**
OHIO UTILITIES PROTECTION SERVICE.

COPYRIGHT 2017 BY:
LEE SURVEYING & MAPPING CO., INC.
117 North Madriver Street
BELLEFONTAINE, OHIO 43311
(937) 593-7335
www.lsminc.us
surveys@lsminc.us

ORIGINAL STAMP IN GREEN
KSS D1017 63021017 L-6302-1

INDEXED ON MAP
6089