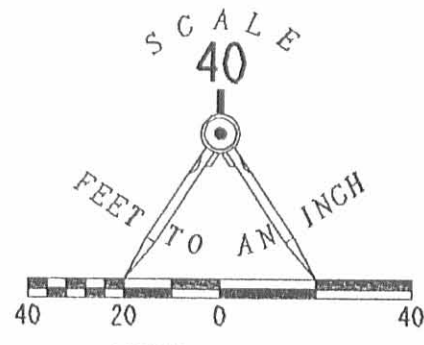
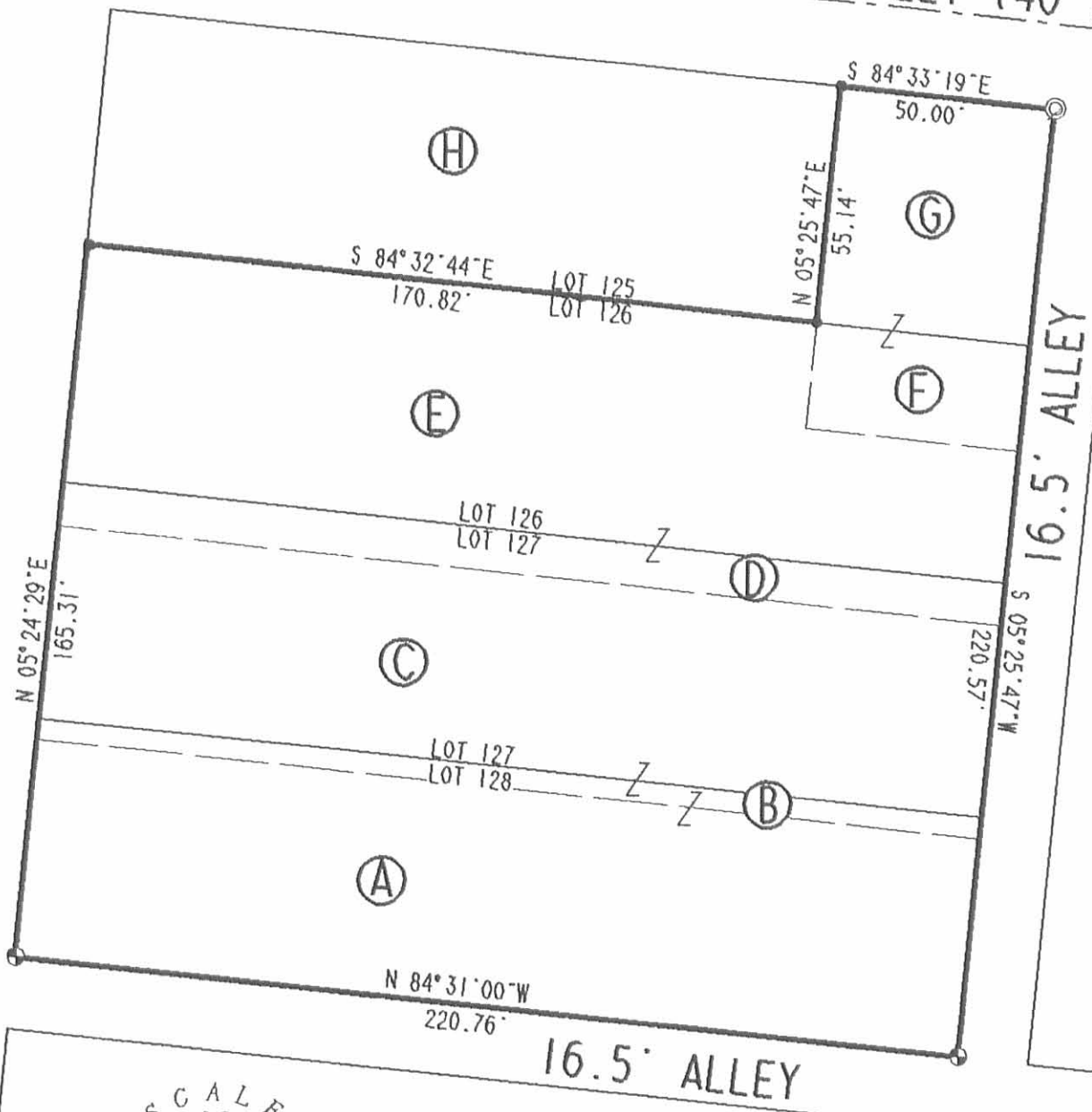


MAIN STREET (80')

BROWN STREET (40')



LEGEND

- STONE FOUND
- RAILROAD SPIKE SET
- 3/4" I. ROD SET
- DRILL HOLE IN CONCRETE SET

**SURVEY OF CITY LOTS
125 THROUGH 128
CITY OF BELLEFONTAINE
SECTION 35, TOWN 4, RANGE 14
LAKE TOWNSHIP
LOGAN COUNTY, OHIO**

INDEXED ON MAP
6101 IP

- (A)** PAULA ANN WAMMES
VOL. 392, PG. 410, TR. 111
- (B)** PAULA ANN WAMMES
VOL. 392, PG. 410, TR. 11
- (C)** PAULA ANN WAMMES
VOL. 392, PG. 410, TR. 1
- (D)** BOARD OF LIBRARY TRUSTEES
O.R. 124, PG. 797, TR. 11
- (E)** BOARD OF LIBRARY TRUSTEES
O.R. 124, PG. 797, TR. 11
- (F)** CHARLES J. SEELING
VOL. 359, PG. 61
- (G)** CHARLES J. SEELING
VOL. 359, PG. 61
- (H)** VERNON N. WEBER
O.R. 49, PG. 261

SURVEYED BY:

Jeffrey V. Lee
JEFFREY V. LEE

PROFESSIONAL SURVEYOR 6359
MAY 14, 1991



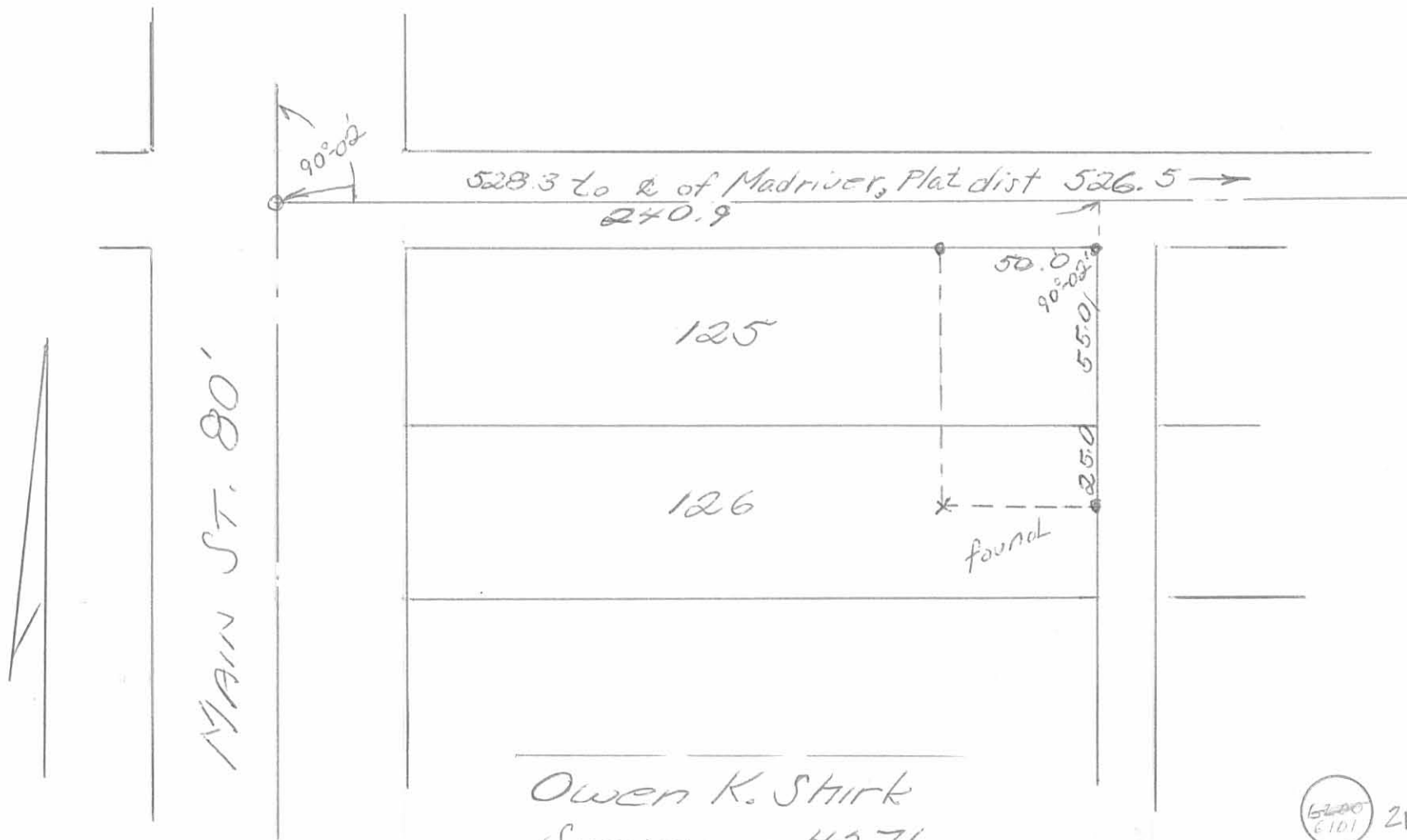
ORIGINAL STAMP IN GREEN

LEE SURVEYING & MAPPING CO.
143 East Columbus Avenue
BELLEFONTAINE, OHIO 43311
(513) 593-7335

DISK 42 LIBRARY

L 1915-4

PETERS SURVEY
LOT 125 & 126 - BELLEFONTAINE

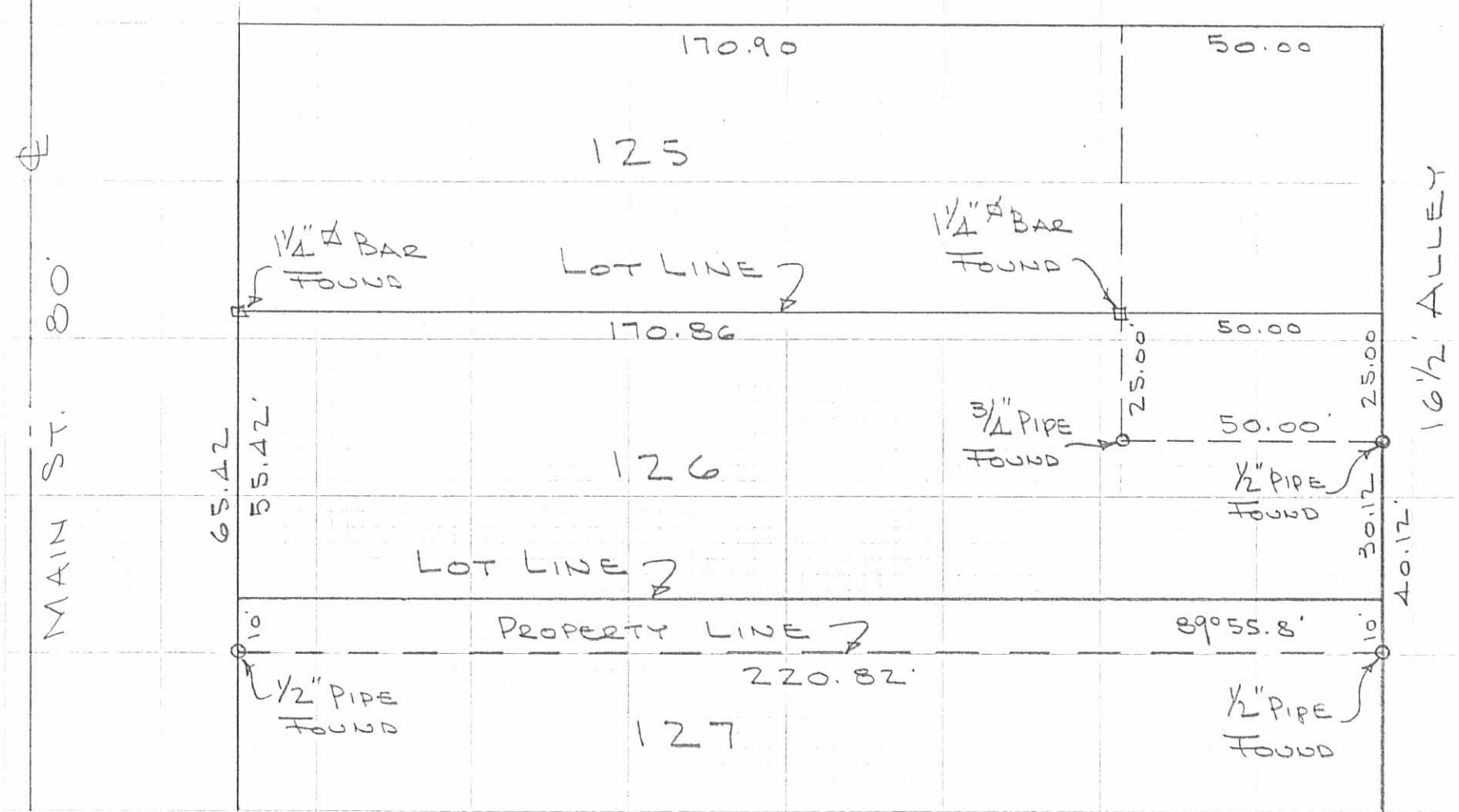


Owen K. Stirk
Surveyor #271
6-18-75

6200
E 101 2P

INDEXED ON MAP

BROWN AVE. 30'



INDEXED ON MAP
 6101 8P

SURVEY OF
 PART LOTS 126-127
 BELLEFONTAINE, OHIO
 JULY 25, 1974
 SCALE 1" = 30'

DAN L. DODSON
 REG. SURVEYOR 4270
 BELLEFONTAINE, O.