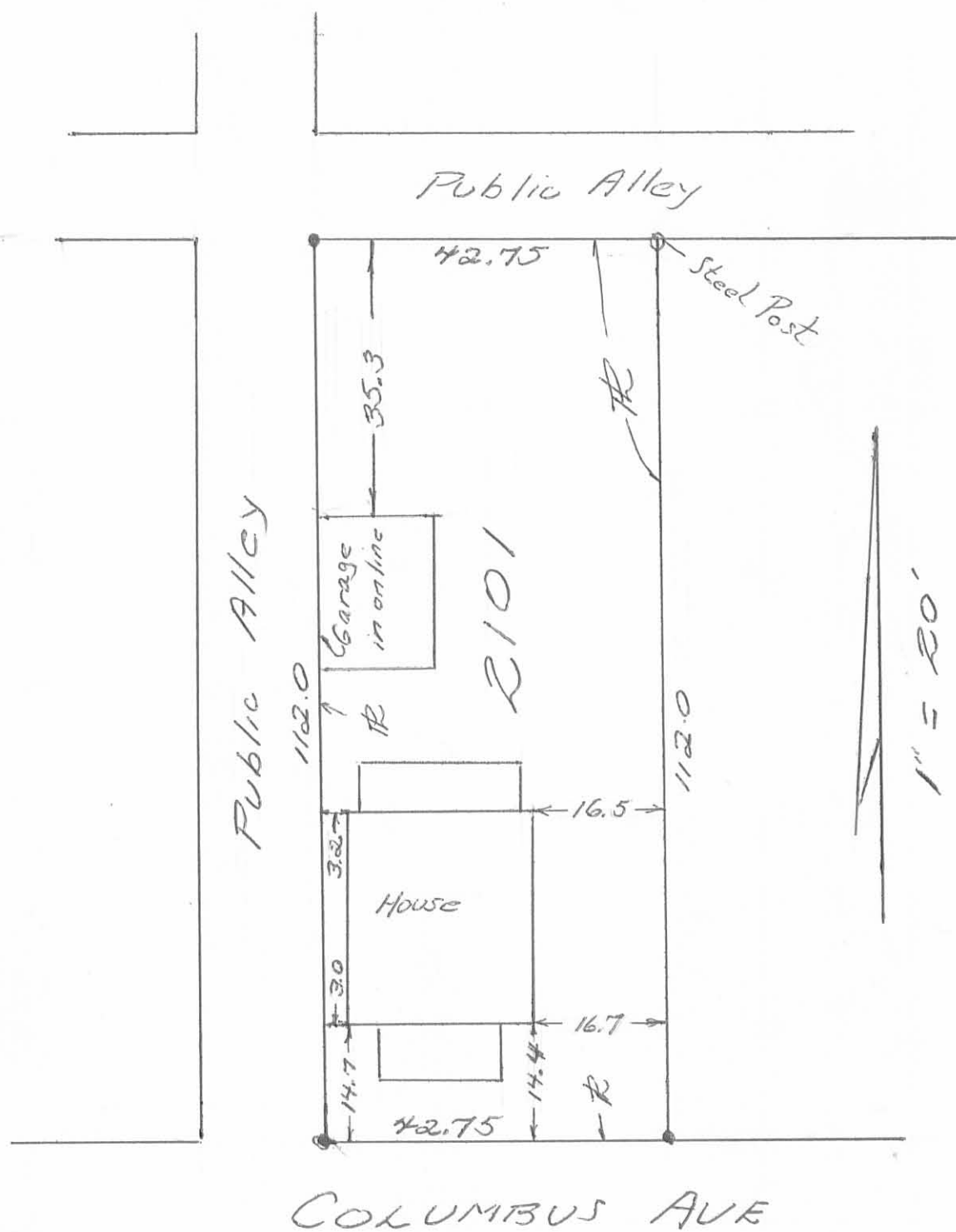


1008 WEST COLUMBUS AVE  
 LOT 2101, BELLEFONTAINE, OHIO  
 SEC. 5, T-3; R-14, HARRISON TWP, LOGAN CO.



I hereby certify the above plat represents a true survey of Lot 2101 of the Woodman & Knight Addition to the city of Bellefontaine as recorded in the Logan Co. Recorder's office made by me on Dec. 8, 1973. There are no encroachments.

(149) IP

Owen K. Stirk  
 Surveyor 4271

INDEXED ON MAP

4-25-2024

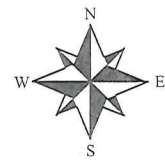


**APPROVED**

# Plat of Survey

Guider Winkle Partners, Inc.

State of Ohio, Logan County, Harrison Township  
City of Bellefontaine, Lots 2089 and 2091  
Woolman-Knight Addition Plat Cabinet A, Slide 35  
Hara C. Brown O.R. 1418, pg. 2222



SCALE : 1" = 75'

### Legend

- ⊕ - Railroad spike set
- - 1" Iron pin found
- - 5/8" x 30" Iron pin set with cap marked "GUIDER S 7752"

### Surveyor's Certification

I hereby certify that this plat is an accurate representation of a field survey made by me and is correct to the best of my knowledge.

*Timothy L. Guider*

4/25/24

Timothy L. Guider R.S. #7752  
Guider Winkle Partners, Inc.  
19541 Delaware County Line Road  
Marysville, Ohio 43040  
(740)-666-8902

Date

Job#24070

INDEXED ON MAP  
6149

**Basis of Bearing**  
State Plane Coordinate System  
Ohio North Zone, NAD83

Scale in Feet

