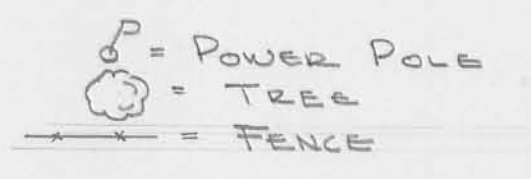


SURVEY OF PROPERTY
 CORNER OF MAIN ST. & CANTWELL ST.
 BELLEFONTAINE, OHIO
 FOR
 B. B. F. INC.
 FEBRUARY 5, 1972
 SCALE 1"=10'



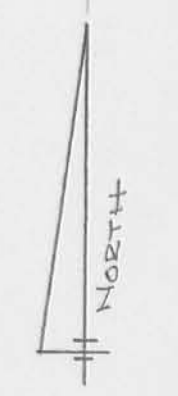
BENCH MARK U.S.C. & G.S. DATUM
 CITY BM. No. TT-17-63
 BRASS DISK IN CONC. POST 10' BELOW
 SURFACE, 56' S. OF BUCKINGHAM ST.
 & 18' W. OF W. CURB OF MAIN ST.
 ELEV. 1218.85

NOTE: ADD 1200.00' TO INDICATED
 ELEVATIONS FOR U.S.C. & G.S. DATUM

ZONING
 TRACT ZONED B-2
 DOWNTOWN BUSINESS

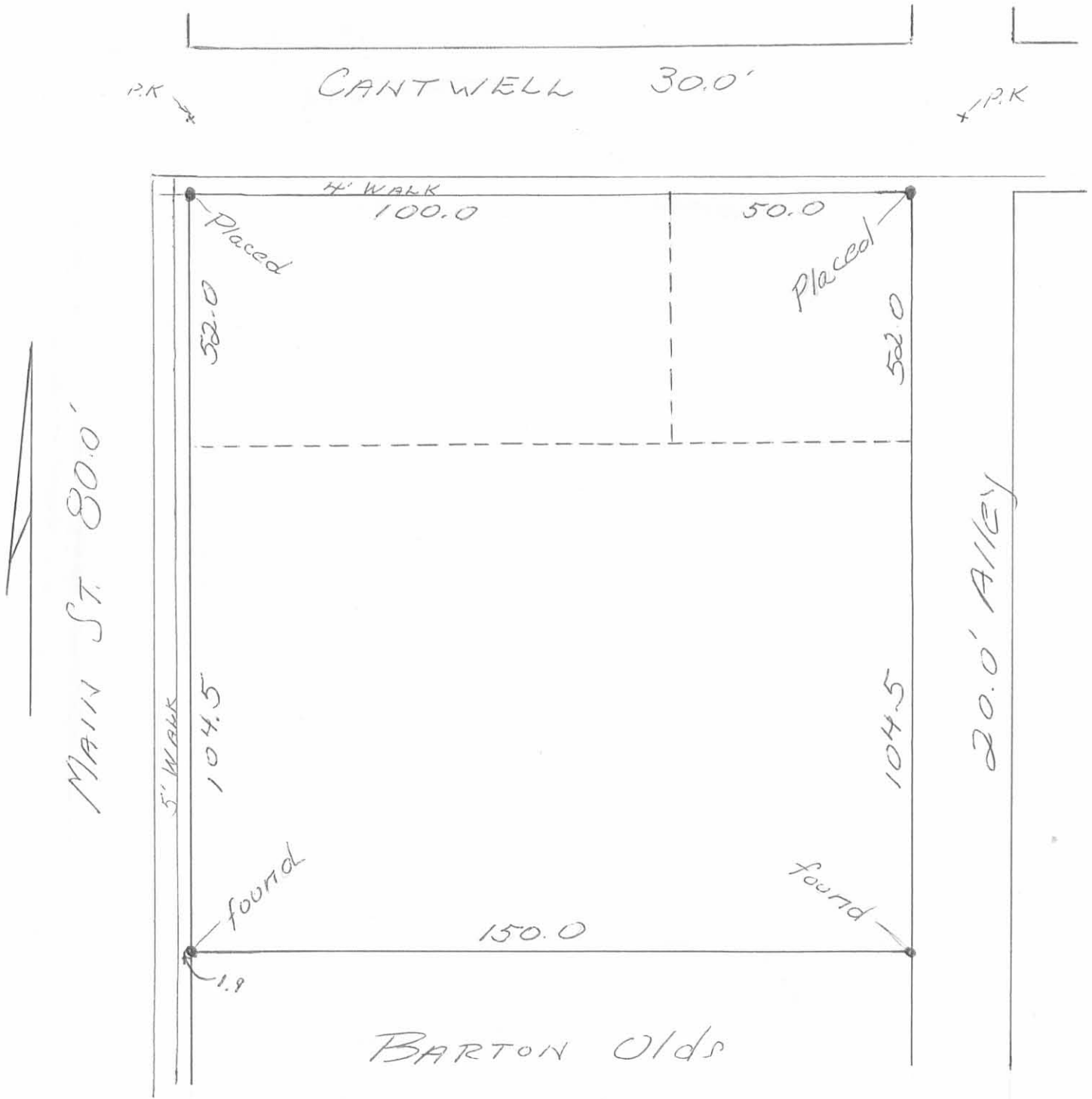
BUILDING SET BACK

MAIN STREET	25'
CANTWELL ST	25'
ALLEY	10'
SOUTH LINE	0'



SURVEYED BY:
 DAN L. DOBSON
 REG. SURVEYOR 4270
 BELLEFONTAINE, OHIO

SURVEY for B.B.F.
 on the corner of MAIN & CANTWELL
 BELLEFONTAINE, OHIO 1" = 30.0'



(6153) IP

INDEXED ON MAP

Owen K. Shirk
 Surveyor 4271
 Surveyed: 2-24-72