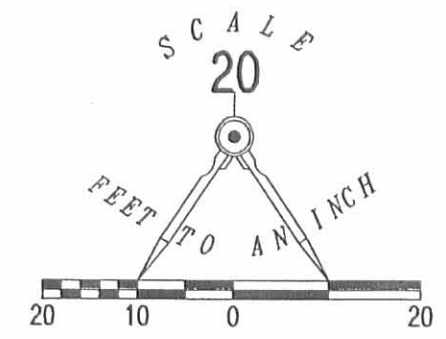



REC'D 6-27-06 SWM DL



- LEGEND:
- 1 INCH IRON BAR FOUND
 - ⊙ 7/8 INCH IRON BAR FOUND
 - 5/8 INCH IRON ROD SET

RETRACEMENT SURVEY OF THE
 RUTH JANE KAUFFMAN
 LOT 2620
 BELLE DEMEURE ADDITION
 PLAT CABINET A, SLIDE 53
 VOLUME 329, PAGE 670
 CITY OF BELLEFONTAINE
 LAKE TOWNSHIP
 LOGAN COUNTY, OHIO

SURVEYED BY:

 JEFFREY I. LEE
 PROFESSIONAL SURVEYOR 6359
 JUNE 23, 2006

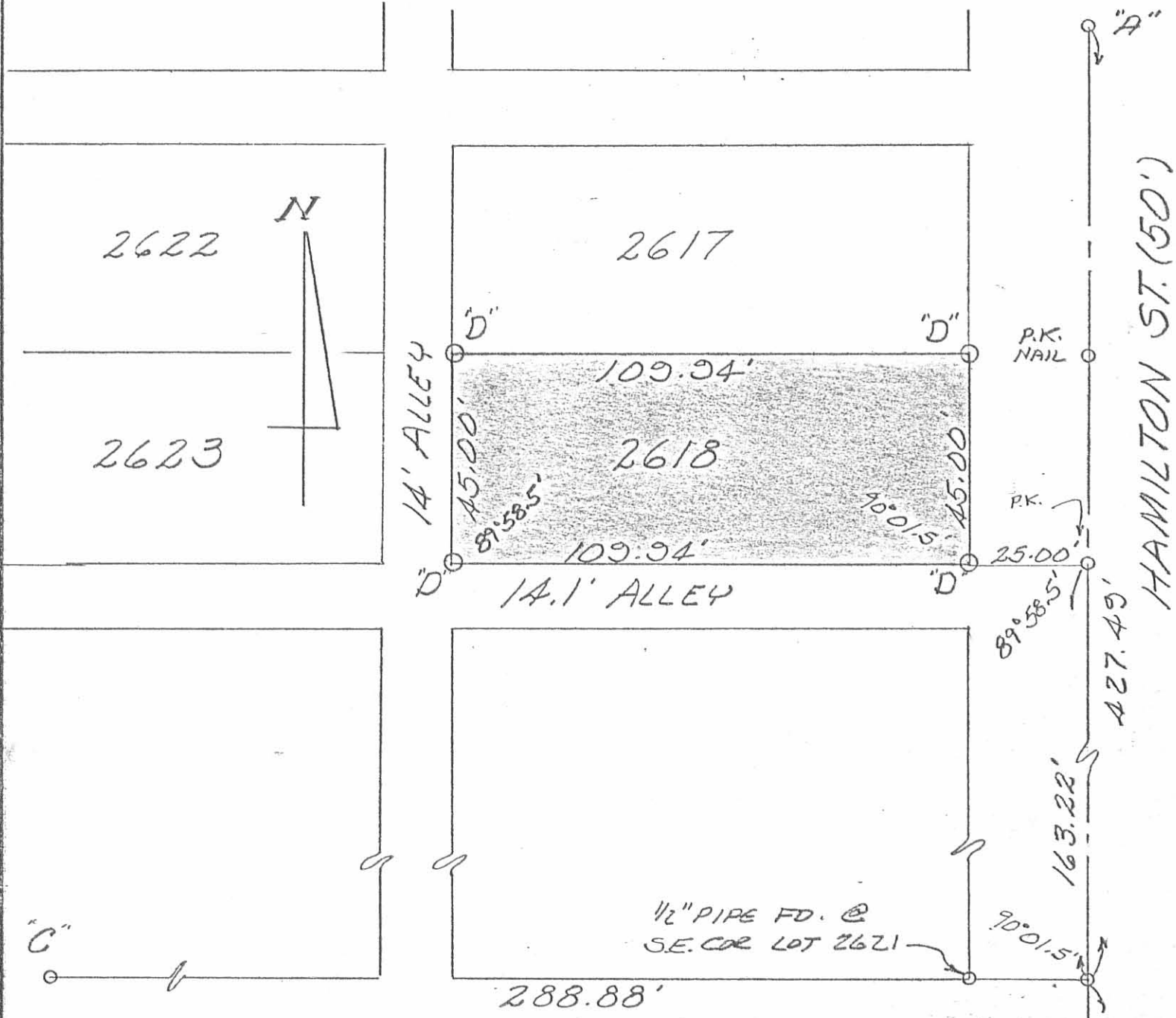


ORIGINAL STAMP IN GREEN

COPYRIGHT 2006 BY:
 LEE SURVEYING & MAPPING CO., INC.
 117 North Madriver Street
 BELLEFONTAINE, OHIO 43311
 (937) 593-7335
 KSR D0606 4266066 L-4266-3

2 WORKING DAYS
BEFORE YOU DIG
 CALL TOLL FREE **800-362-2764**
 OHIO UTILITIES PROTECTION SERVICE

INDEXED ON MAP
 6192 IP



LEGEND:

- A = 3/4" PIPE FD. @
E COLTON & HAMILTON
- B = 1" IRON BAR FD. @
E WASHINGTON & HAMILTON
- C = 1/2" PIPE FD. IN E MADRIER
@ S.W. COR. BELLE DEMEURE ADD.
- D = 5/8" IRON BAR SET

SURVEY OF LOT 2618
 BELLE DEMEURE ADD.
 BELLEFONTAINE, OHIO
 APRIL, 1978
 SCALE 1" = 30'

6192 2P

INDEXED ON MAP



LESLIE H. GEESLIN
 RUSHESLYANIA, OHIO

Subdivision of Lots
2615 - 2616

The following described real estate situated in the City of Bellefontaine, Township of Lake, County of Logan, State of Ohio and being the north part of Lots 2615 & 2616, Belle Demeure Addition and being more particularly described as follows:

Being 71.00 feet off the north end of said lots as recorded.

The following described real estate situated in the City of Bellefontaine, Township of Lake, County of Logan, State of Ohio and being the south part of Lots 2615 & 2616, Belle Demeure Addition and being more particularly described as follows:

Being 62.25 feet off the south end of said lots as recorded.

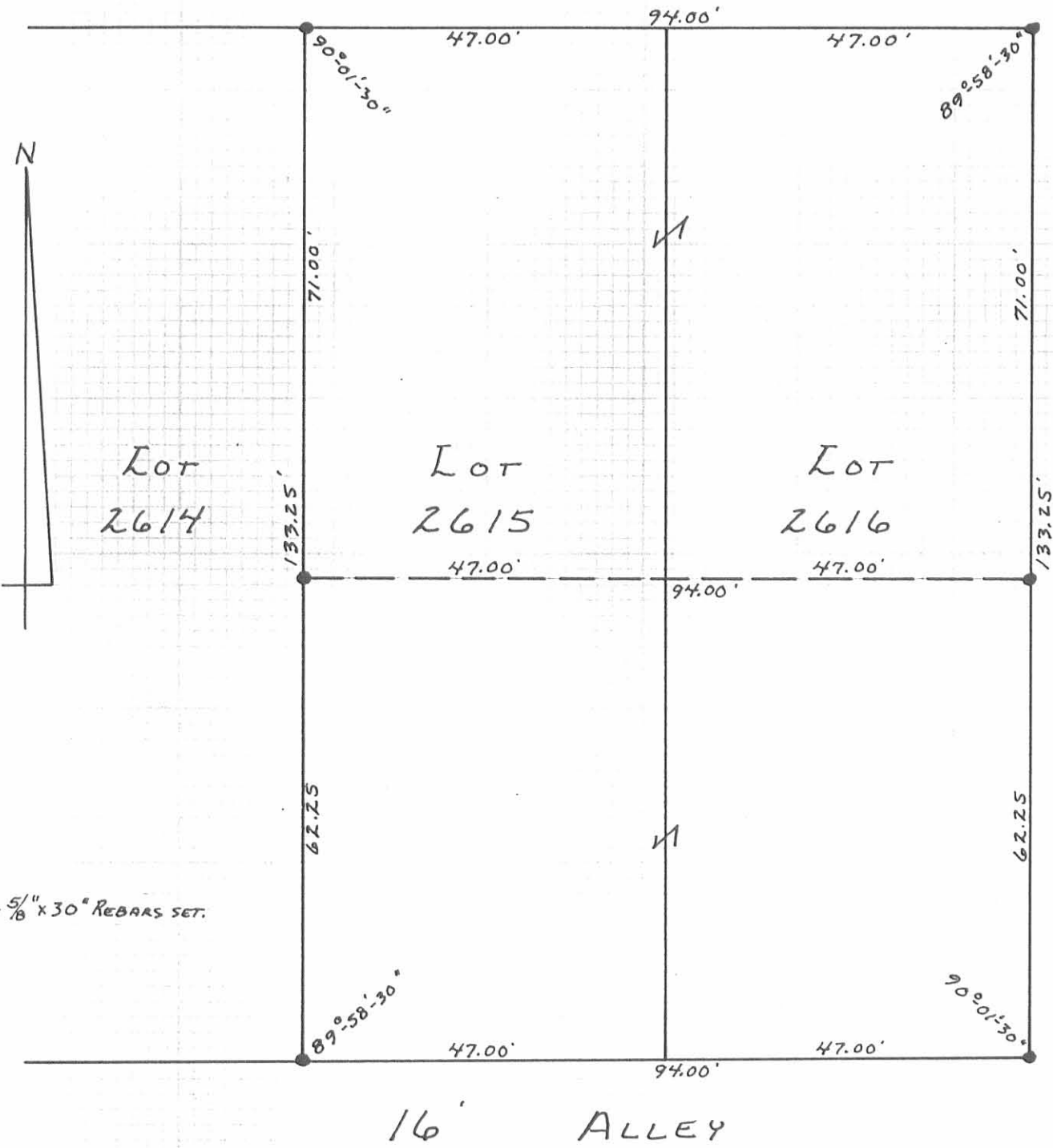
I hereby certify that the above descriptions are the result of a field survey made by me on May 11, 1988.



Daniel E. Gilbert
DANIEL E. GILBERT, P. S.
Reg. Sur. No. 5402
400 N. Park St.
Bellefontaine, Ohio
43311

INDEXED ON MAP
6192 3D

COLTON AVENUE - 50'



HAMILTON STREET - 50'

• - 5/16" x 30" REBARS SET.

3/4" IRON BAR FD.

LOT 2617

SUBDIVISION OF LOTS
 2615-2616
 BELLE DEMBURE ADD.
 CITY OF BELLEFONTAINE
 LAKE TOWNSHIP
 LOGAN COUNTY, OHIO
 MAY 11, 1988

SCALE: 1" = 20'

INDEXED ON MAP
 61923P

Daniel E. Gilbert
 DANIEL E. GILBERT, P.S.
 REG. SUR. NO. 5402
 400 N. PARK ST.
 BELLEFONTAINE, OHIO
 43311

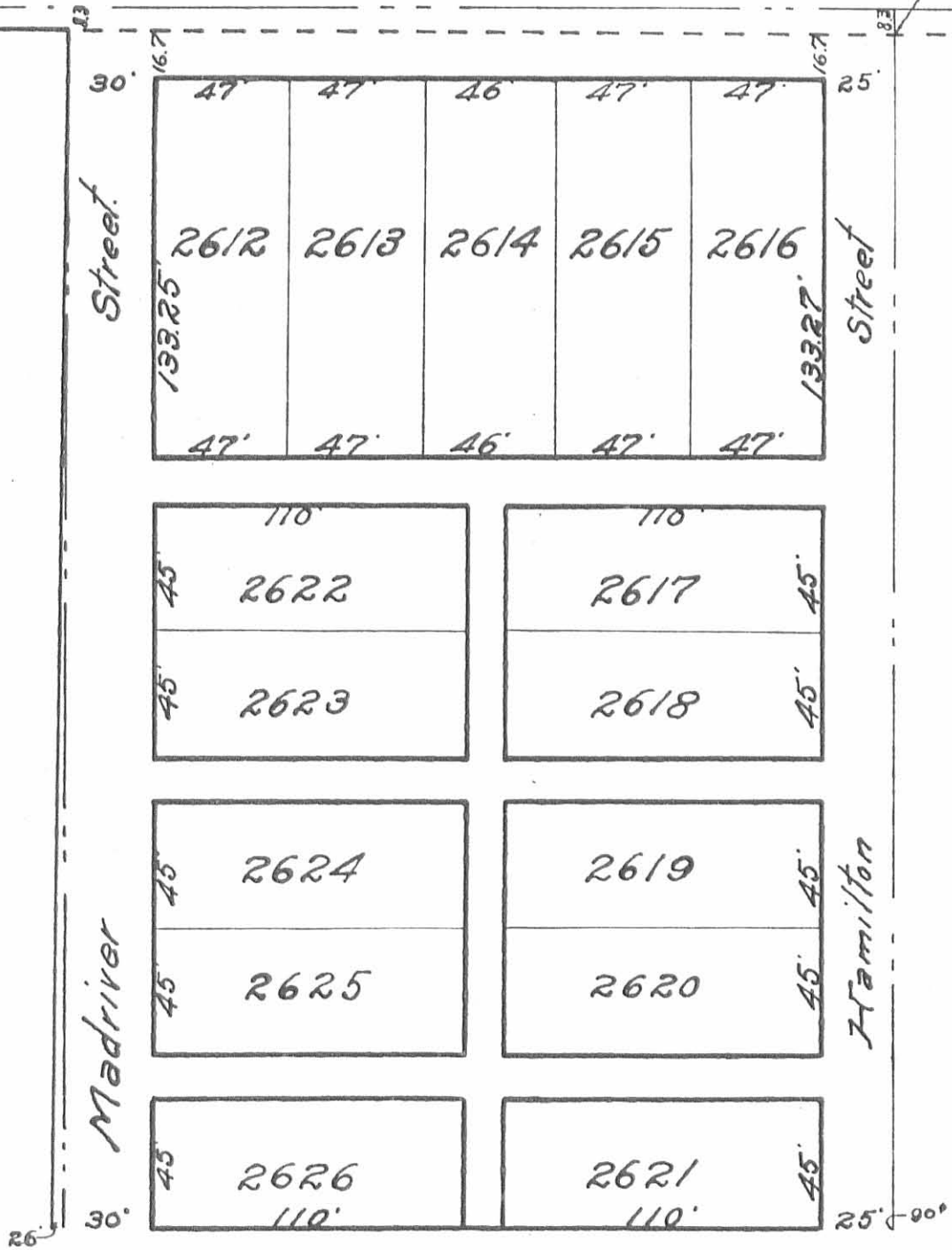


088-023

BELL DEMURE

Colton

Avenue.



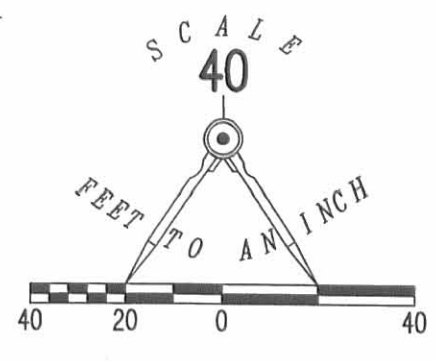
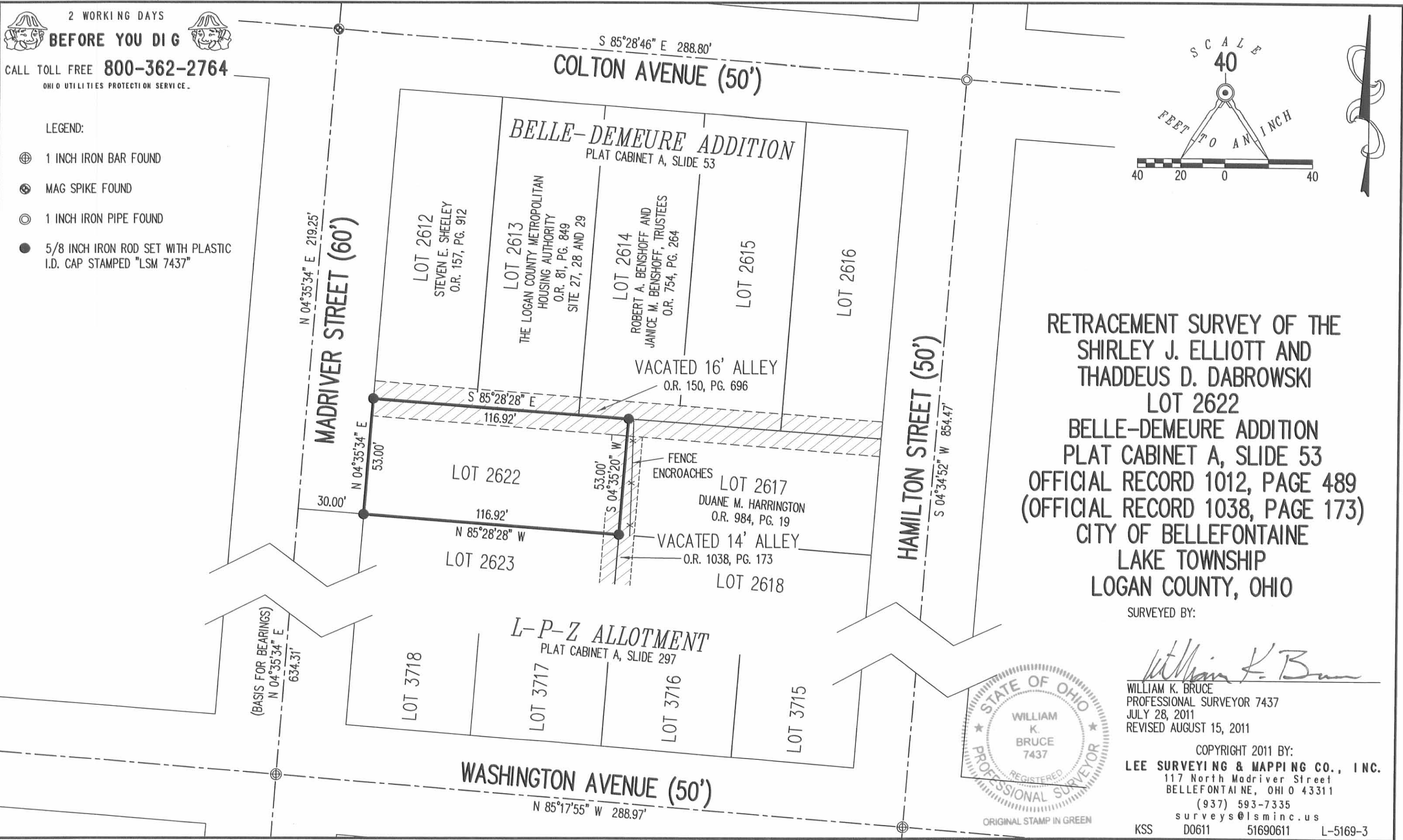
INDEXED ON MAP
6192 4P

REC'D 9-1-11 smy ou

2 WORKING DAYS
BEFORE YOU DIG
CALL TOLL FREE **800-362-2764**
OHIO UTILITIES PROTECTION SERVICE.

LEGEND:

- ⊕ 1 INCH IRON BAR FOUND
- ⊙ MAG SPIKE FOUND
- ⊙ 1 INCH IRON PIPE FOUND
- 5/8 INCH IRON ROD SET WITH PLASTIC I.D. CAP STAMPED "LSM 7437"

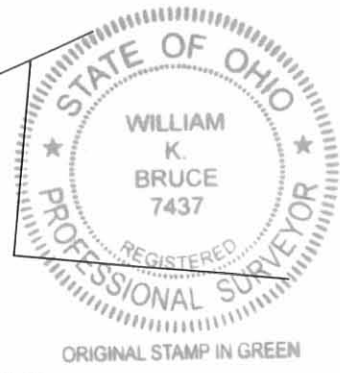


RETRACEMENT SURVEY OF THE
SHIRLEY J. ELLIOTT AND
THADDEUS D. DABROWSKI
LOT 2622
BELLE-DEMEURE ADDITION
PLAT CABINET A, SLIDE 53
OFFICIAL RECORD 1012, PAGE 489
(OFFICIAL RECORD 1038, PAGE 173)
CITY OF BELLEFONTAINE
LAKE TOWNSHIP
LOGAN COUNTY, OHIO

SURVEYED BY:

William K. Bruce

WILLIAM K. BRUCE
PROFESSIONAL SURVEYOR 7437
JULY 28, 2011
REVISED AUGUST 15, 2011



COPYRIGHT 2011 BY:
LEE SURVEYING & MAPPING CO., INC.
117 North Madraver Street
BELLEFONTAINE, OHIO 43311
(937) 593-7335
surveys@lsmcinc.us
KSS D0611 51690611 L-5169-3

INDEXED ON MAP
6192 SP