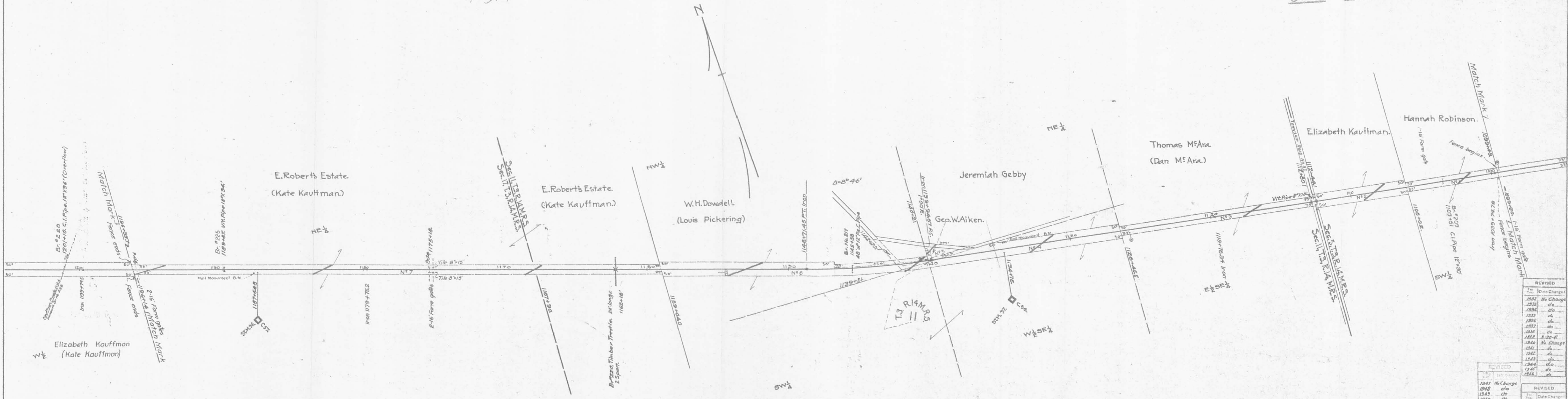


AYS - R.O.W. - F = 17.64 AC.

13.45

VALUATION SUB SHEET REAL ESTATE  
OWNER SECTION DIV. NUMBER REGION  
500 3030 0 13



F - OH. D000 M43

No.	Grantor	Grantee	Instrument	Date	Record	Dist. No.	Remarks
1	Hannah Robinson	John T. Adams	W. Deed	Dec 27, 1897	DB V95 P444	Apr 24, 1901	1468 1/2 See Note No. 1
2	Elizabeth Kauffman	John T. Adams	W. Deed	Dec 1, 1897	DB V95 P420	Apr 19, 1901	1466 1/2 See Note No. 1
3	Thos. Mearns	John T. Adams	W. Deed	Dec 24, 1897	DB V95 P420	Apr 19, 1901	1466 1/2 See Note No. 1
4	Jerry M. Gebby	John T. Adams	W. Deed	Jan 11, 1898	DB V95 P420	Apr 19, 1901	1466 1/2 See Note No. 1
5	Geo. W. Aikin	John T. Adams	W. Deed	Dec 30, 1897	DB V95 P398	Apr 16, 1901	1466 1/2 See Note No. 1
6	W. H. Dowdell	John T. Adams	W. Deed	Dec 20, 1897	DB V95 P409	Apr 17, 1901	1466 1/2 See Note No. 1
7	Emmette Roberts, et al	John T. Adams	W. Deed	Nov 12, 1897	DB V95 P444	Apr 24, 1901	1468 1/2 See Note No. 1
8	Louis Pickering et al	T&O R.R. Co.	G.C. Deed	Aug 19, 1927	DB V132 P420	Sept 14, 1927	4800 1/2 Release of Under-Crossing, Comp. Report No. 719.

Note: - Conveyed to D & L R Ry Co by John T. Adams by G.C. Deed Feb 10, 1899. Recorded Vol. 95 P460 Apr 29, 1901. Dist. No. 1317

LOGAN COUNTY  
HARRISON TOWNSHIP

THIS TRACING IS 50% ORIGINAL SIZE  
DRAFTSMAN TO DOUBLE SCALE

# THIS PROPERTY WAS MERGED WITH  
THE NEW YORK CENTRAL  
RAILROAD COMPANY  
JUNE 30, 1952  
ANNOUNCED IN I. C. C. BROCKETT NO. 17700  
ISSUED JUNE 18, 1952  
RIGHT OF WAY AND TRACK MAP  
OPERATED BY  
# THE TOLEDO AND OHIO CENTRAL RAILWAY COMPANY

ST. MARYS BRANCH -- MAIN LINE  
FROM STATION 1098+49. TO STATION 1186+33.7  
SCALE 1 INCH = 200 FEET JUNE 30, 1918

OFFICE OF VALUATION ENGINEER, COLUMBUS, OHIO.  
\* OPERATED BY THE NEW YORK CENTRAL RAILROAD COMPANY SUBSEQUENT TO DECEMBER 31, 1921.

REVISED	DATE	DESCRIPTION
1947	No Change	
1948	do	
1949	do	
1950	do	
1951	do	
1952	3-2-54	
1953	No Change	
1954	do	
1955	do	
1956	do	
1957	do	
1958	do	
1959	do	
1960	do	
1961	do	
1962	do	
1963	do	
1964	do	
1965	do	
1966	do	
1967	do	
1968	do	
1969	do	
1970	do	
1971	do	
1972	do	
1973	do	
1974	do	
1975	do	
1976	do	
1977	do	
1978	do	
1979	do	
1980	do	
1981	do	
1982	do	
1983	do	
1984	do	
1985	do	
1986	do	
1987	do	
1988	do	
1989	do	
1990	do	
1991	do	
1992	do	
1993	do	
1994	do	
1995	do	
1996	do	
1997	do	
1998	do	
1999	do	
2000	do	

V-303  
13  
V-3  
13

INDEXED ON MAP  
6216 HPI

OWNER	VALUATION	SUB SHEET	REAL ESTATE
500	3030	14	7

THIS TRACING IS 50% ORIGINAL SIZE.  
DRAFTSMAN TO DOUBLE SCALE.



AVS - R.O.W - F = 22.50



REVISED	REVISED
Date	Date
1897 No Change	1897 No Change
1898 do	1898 do
1899 do	1899 do
1900 do	1900 do
1901 do	1901 do
1902 do	1902 do
1903 do	1903 do
1904 do	1904 do
1905 do	1905 do
1906 do	1906 do
1907 do	1907 do
1908 do	1908 do
1909 do	1909 do
1910 do	1910 do
1911 do	1911 do
1912 do	1912 do
1913 do	1913 do
1914 do	1914 do
1915 do	1915 do
1916 do	1916 do
1917 do	1917 do
1918 do	1918 do
1919 do	1919 do
1920 do	1920 do
1921 do	1921 do
1922 do	1922 do
1923 do	1923 do
1924 do	1924 do
1925 do	1925 do
1926 do	1926 do
1927 do	1927 do
1928 do	1928 do
1929 do	1929 do
1930 do	1930 do
1931 do	1931 do
1932 do	1932 do
1933 do	1933 do
1934 do	1934 do
1935 do	1935 do
1936 do	1936 do
1937 do	1937 do
1938 do	1938 do
1939 do	1939 do
1940 do	1940 do
1941 do	1941 do
1942 do	1942 do
1943 do	1943 do
1944 do	1944 do
1945 do	1945 do
1946 do	1946 do

# THIS PROPERTY WAS MERGED WITH  
THE NEW YORK CENTRAL  
RAILROAD COMPANY  
JUNE 30, 1952  
ANNOUNCED IN L.C.C. DOCKET NO. 17700  
HEARD JUNE 10, 1952

RIGHT OF WAY AND TRACK MAP  
# THE TOLEDO AND OHIO CENTRAL RAILWAY  
OPERATED BY  
THE TOLEDO AND OHIO CENTRAL RAILWAY COMPANY

ST. MARYS BRANCH -- MAIN LINE  
FROM STATION 1196+33.7 TO STATION 1306+13.5  
SCALE 1 INCH = 200 FEET  
JUNE 30, 1918  
OFFICE OF VALUATION ENGINEER, COLUMBUS, OHIO.  
\* OPERATED BY THE NEW YORK CENTRAL RAILROAD  
COMPANY SUBSEQUENT TO DECEMBER 31, 1921.  
CORRECTED AS OF JAN. 1, 1921  
OFFICE OF VALUATION ENGINEER, CLEVELAND, OHIO.

V-303  
14  
V.3  
14

LOGAN COUNTY  
HARRISON TOWNSHIP

No.	Grant or	Grantee	Instrument	Date	Record	Cont. No.	Remarks
1	Elizabeth Kempton	John T. Adams	W. Deed	Dec 1, 1897	DB Y96 P425	Apr 19, 1901 1463466	See Note No. 1
2	Emmette Roberts et al	John T. Adams	W. Deed	Dec 13, 1897	DB Y96 P444	Apr 24, 1901 1463493	See Note No. 1
3	Geo. C. Wolfinger	John T. Adams	W. Deed	Dec 24, 1897	DB Y96 P445	Apr 26, 1901 1463492	See Note No. 1
4	David Snapp, et al	J. T. Adams	W. Deed	Dec 10, 1897	DB Y95 P449	Apr 24, 1901 1463494	See Note No. 1
5	Jan. W. Snapp	John T. Adams	W. Deed	Dec 13, 1897	DB Y96 P447	Apr 24, 1901 1463494	Right to cross road
6	Alice Moore	John T. Adams	W. Deed	Dec 16, 1897	DB Y95 P430	Apr 27, 1901 1463495	See Note No. 1
7	Grant McMorran	T & O C Ry Co	W. Deed	Nov 24, 1918	DB V18 P562	Nov 20, 1918 1463496	
8	Grant McMorran	T & O C Ry Co	W. Deed	Dec 24, 1897	DB Y95 P432	Apr 27, 1901 1463497	See Note No. 1
9	Dennis Moore	John T. Adams	W. Deed	Dec 24, 1897	DB Y95 P432	Apr 27, 1901 1463497	See Note No. 1

Note:-  
No. 1 - Conveyed to D & L H By Co by John T. Adams by G.C. Deed  
Feb 18, 1899. Recorded Vol. 95 P460 Apr 29, 1901. Cont. No. 1317

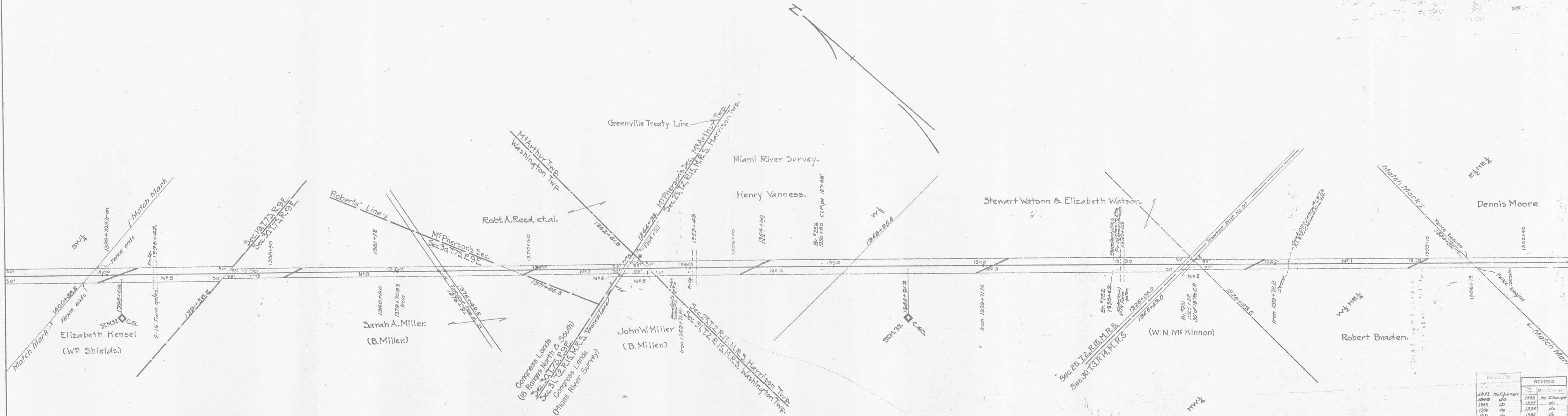
303-15

INDEXED ON MAP  
0216 14P-2

17.98

AMS-R.O.W-F=18.07 AC.

OWNER 500 VALUATION SUB SECTION DIV. 3030 SHEET NUMBER 15 REAL ESTATE REGION



D-04.D000M43

**SCHEDULE OF PROPERTY**

No.	Grantor	Grantee	Instrument	Date	Record	Cont.No.	Remarks
1	Robert Braden	John T. Adams	W. Deed	Dec 27, 1897	DB V95 P399	Apr 16, 1901 1498/12 See Note No.1	
2	No paper title found.					1499/10	
3	Stewart Watson	John T. Adams	W. Deed	Nov 17, 1897	DB V95 P453	Apr 26, 1901 1498/12 See Note No.1	
4	Henry Van Ness	John T. Adams	W. Deed	Nov 17, 1897	DB V95 P453	Apr 26, 1901 1498/12 See Note No.1	
5	John W. Miller	T & O Ry Co	W. Deed	May 7, 1902	DB V96 P208	July 12, 1902 1498/13	
6	This parcel conveyed in same deed as parcel #4, this map						
7	Rob't. A. Reid, et al	John T. Adams	W. Deed	Jan 4, 1899	DB V95 P443	Apr 24, 1901 1498/12 See Note No.1	
8	Sarah A. Miller	John T. Adams	W. Deed	Nov 20, 1897	DB V95 P433	Apr 27, 1901 1498/12 See Note No.1	
9	Elizabeth Kensel	T & O Ry Co	W. Deed	Nov 9, 1906	DB V104 P305	Nov 10, 1906 1498/14	
4	Elizabeth Kensel	T & O Ry Co	W. Deed	Aug 1, 1930	DB V143 P345	Sept 4, 1930 3047/12 Release of cattle pass. Comp. Report No. AB15.	
1	Robert Braden	T & O Ry Co	W. Deed	Apr 30, 1931	DB V141 P220	May 26, 1931 3070/12 Release of cattle pass. Comp. Report No. 1517	

No.1 - Conveyed to D & E Ry Co by John T. Adams by Q.C. Deed Feb 18, 1898. Recorded Vol.95 P460 Apr 29, 1901. Cont.No.1517

THIS TRACING IS 50% ORIGINAL SIZE DRAFTSMAN TO DOUBLE SCALE

REVISED	REVISED	REVISED	
Year	Date Change	Year	
1881	No Change	1928	No Change
1882	do	1929	No Change
1883	do	1930	No Change
1884	do	1931	No Change
1885	do	1932	No Change
1886	do	1933	No Change
1887	do	1934	No Change
1888	do	1935	No Change
1889	do	1936	No Change
1890	do	1937	No Change
1891	do	1938	No Change
1892	do	1939	No Change
1893	do	1940	No Change
1894	do	1941	No Change
1895	do	1942	No Change
1896	do	1943	No Change
1897	do	1944	No Change
1898	do	1945	No Change
1899	do	1946	No Change
1900	do	1947	No Change
1901	do	1948	No Change
1902	do	1949	No Change
1903	do	1950	No Change
1904	do	1951	No Change
1905	do	1952	No Change
1906	do	1953	No Change
1907	do	1954	No Change
1908	do	1955	No Change
1909	do	1956	No Change
1910	do	1957	No Change
1911	do	1958	No Change
1912	do	1959	No Change
1913	do	1960	No Change
1914	do	1961	No Change
1915	do	1962	No Change
1916	do	1963	No Change
1917	do	1964	No Change
1918	do	1965	No Change
1919	do	1966	No Change
1920	do	1967	No Change
1921	do	1968	No Change
1922	do	1969	No Change
1923	do	1970	No Change
1924	do	1971	No Change
1925	do	1972	No Change
1926	do	1973	No Change
1927	do	1974	No Change
1928	do	1975	No Change
1929	do	1976	No Change
1930	do	1977	No Change
1931	do	1978	No Change
1932	do	1979	No Change
1933	do	1980	No Change
1934	do	1981	No Change
1935	do	1982	No Change
1936	do	1983	No Change
1937	do	1984	No Change
1938	do	1985	No Change
1939	do	1986	No Change
1940	do	1987	No Change
1941	do	1988	No Change
1942	do	1989	No Change
1943	do	1990	No Change
1944	do	1991	No Change
1945	do	1992	No Change
1946	do	1993	No Change
1947	do	1994	No Change
1948	do	1995	No Change
1949	do	1996	No Change
1950	do	1997	No Change
1951	do	1998	No Change
1952	do	1999	No Change
1953	do	2000	No Change

# THIS PROPERTY WAS MERGED WITH THE NEW YORK CENTRAL RAILROAD COMPANY

JUNE 30, 1952

APPROVED BY I.C.C. DOCKET NO. 17700

RECORDED JUNE 18, 1952

RIGHT OF WAY AND TRACK MAP

# THE TOLEDO AND OHIO CENTRAL RAILWAY OPERATED BY THE TOLEDO AND OHIO CENTRAL RAILWAY COMPANY

ST. MARYS BRANCH -- MAIN LINE

FROM STATION 1306+13.5 TO STATION 1400+85.5

SCALE 1 INCH = 200 FEET

JUNE 30, 1918

OFFICE OF VALUATION ENGINEER, COLUMBUS, OHIO.

OPERATED BY THE NEW YORK CENTRAL RAILROAD COMPANY SUBSEQUENT TO DECEMBER 31, 1921.

CORRECTED AS OF JAN. 1, 1920

OFFICE OF VALUATION ENGINEER, CLEVELAND, OHIO

INDEXED ON MAP 6216 1153

V-303 15

V-3 15

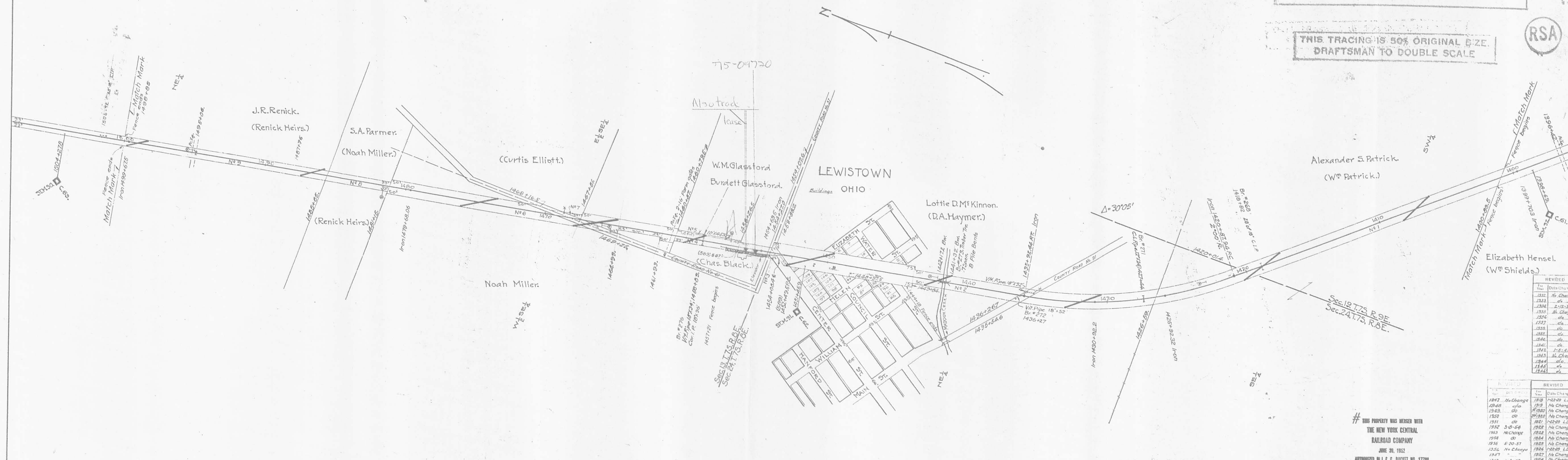
A-14-2-16

21.47

AVS - R.O.W - F = 21.47AC.

VALUATION SUB SHEET REAL ESTATE
OWNER SECTION DIV. NUMBER REGION
500 3030 16 7

THIS TRACING IS 50% ORIGINAL SIZE. DRAFTSMAN TO DOUBLE SCALE



No.	Grantor	Grantee	Instrument	Date	Record	Cont. No.	Remarks
1	A. S. Patrick	John T. Adams	W. Deed	Nov 17, 1897	DB V98 P437	Apr 23, 1901 1466/7	See Note No. 1
2	Lottie D. McKinnon	John T. Adams	W. Deed	Dec 24, 1897	DB V96 P427	Apr 22, 1901 1466/2	See Note No. 1
3	W. M. Glasford et al	T & O C Ry Co	E. Deed	Apr 19, 1901	DB V98 P465	June 15, 1901 1469/7	Right to cross Center St
4	Burlette Glasford	T & O C Ry Co	W. Deed	Sept 23, 1913	DB V114 P18	Sup't. 27, 1913 1490/7	
5	Noah Miller	John T. Adams	W. Deed	Feb 21, 1898	DB V96 P434	Apr 22, 1901 1466/2	See Note No. 1
6	No paper title found.	Held by adverse possession and claimed by Ry Co					
7	S. A. Parmer	T & O C Ry Co	W. Deed	Apr 15, 1901	DB V96 P428	Sept 24, 1901 1469/7	
8	John R. Renick	John T. Adams	W. Deed	Dec 24, 1897	DB V96 P443	Apr 24, 1901 1469/7	See Note No. 1. This parcel continued as parcel #1. Map 17

Note:-  
No. 1 - Conveyed to D & L N Ry Co by John T. Adams by G. C. Deed Feb 18, 1898. Recorded Vol. 96 P460 Apr 29, 1901. Cust. No. 1317

DF 0420001143

LOGAN COUNTY WASHINGTON TOWNSHIP

303-17

V6-P15-F1

REVISED	TH	Date Change
1872	No Change	
1873	No Change	
1874	No Change	
1875	No Change	
1876	No Change	
1877	No Change	
1878	No Change	
1879	No Change	
1880	No Change	
1881	No Change	
1882	No Change	
1883	No Change	
1884	No Change	
1885	No Change	
1886	No Change	
1887	No Change	
1888	No Change	
1889	No Change	
1890	No Change	
1891	No Change	
1892	No Change	
1893	No Change	
1894	No Change	
1895	No Change	
1896	No Change	
1897	No Change	
1898	No Change	
1899	No Change	
1900	No Change	

# THIS PROPERTY WAS MERGED WITH  
THE NEW YORK CENTRAL  
RAILROAD COMPANY  
JUNE 30, 1952  
AUTHORIZED BY L.C.C. Docket No. 17700  
RESERVED JUNE 10, 1952

# THE TOLEDO AND OHIO CENTRAL RAILWAY  
OPERATED BY  
THE TOLEDO AND OHIO CENTRAL RAILWAY COMPANY

ST. MARYS BRANCH -- MAIN LINE  
FROM STATION 1400+88.5 TO STATION 1500+00  
SCALE 1 INCH = 200 FEET  
JUNE 30, 1918  
OFFICE OF VALUATION ENGINEER, COLUMBUS, OHIO.  
\* OPERATED BY THE NEW YORK CENTRAL RAILROAD COMPANY SUBSEQUENT TO DECEMBER 31, 1921.  
CORRECTED AS OF JAN. 1 1931  
OFFICE OF VALUATION ENGINEER, CLEVELAND, OHIO

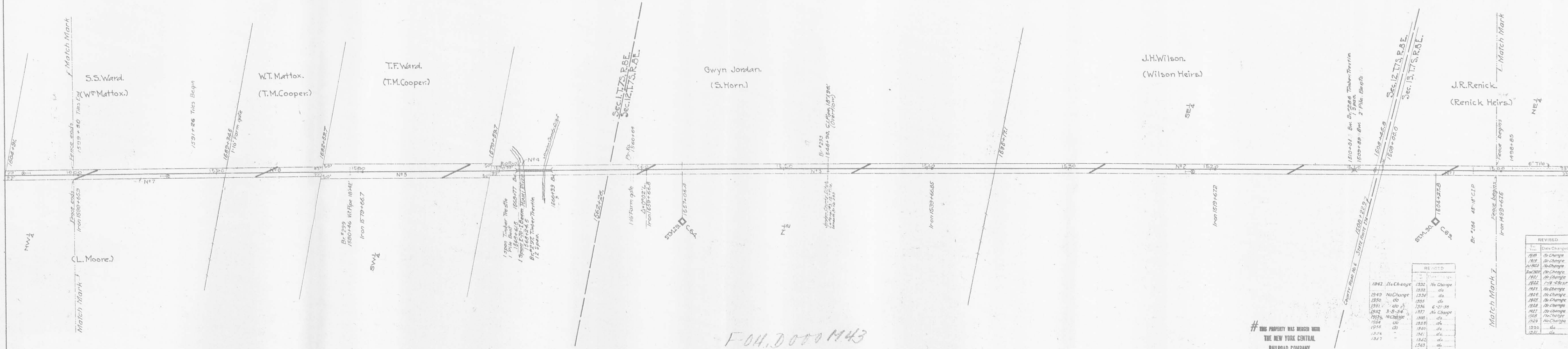
V-303 16

V-3 16

INDEXED ON MAP 6216 1424

ANS - R.O.W.F = 16.05 AC.

OWNER 500 VALUATION SECTION 3030 DIV. 0 SHEET NUMBER 17 REAL ESTATE REGION



F04.0000 M43

SCHEDULE OF PROPERTY

No.	Grantor	Grantee	Instrument	Date	Record	Cust. No.	Remarks
1	John H. Pentick	John T. Adams	W. Deed	Dec 24, 1897	DB 756 P415	Apr 24, 1901 / 764494	See Note No. 1 This is a part of parcel #9, Map 16
2	J. H. Wilson et al	John T. Adams	W. Deed	Dec 24, 1897	DB 756 P454	Apr 26, 1901 / 774494	See Note No. 1
3	Mary H. Jordan	T & O C Ry Co	U. Deed	Apr 19, 1901	DB 756 P566	June 17, 1901 / 773446	Right to cross Miami River
4	State Board of Public Works	John T. Adams	W. Deed	Dec 20, 1897	DB 756 P415	Apr 27, 1901 / 764494	See Note No. 1
5	John T. Adams	John T. Adams	W. Deed	Apr 27, 1901	DB 756 P454	Apr 27, 1901 / 764494	See Note No. 1
6	W. T. Mattox	John T. Adams	W. Deed	Apr 27, 1901	DB 756 P454	Apr 27, 1901 / 764494	See Note No. 1 This parcel is a part of parcel #1, Map 16
7	S. T. Ward	John T. Adams	W. Deed	Dec 21, 1897	DB 756 P415	Apr 27, 1901 / 764494	See Note No. 1
8	E. B. Miller, et al	T. & O. C. Ry Co.	Release	May 25, 1936	DB 756 P571	June 1, 1936 / 226	Release of cattle pass right, A.T.E. 41586

Notes -  
No. 1 - Conveyed to D & I N Co by John T. Adams by G.C. Deed Feb 16, 1897. Recorded Vol. 95 P460 Apr 29, 1901. Cust. No. 1217.

THIS TRACING IS 50% ORIGINAL SIZE. DRAFTSMAN TO DOUBLE SCALE

LOGAN COUNTY WASHINGTON TOWNSHIP

# THIS PROPERTY WAS MERGED WITH THE NEW YORK CENTRAL RAILROAD COMPANY JUNE 30, 1952 AUTHORIZED BY L.C.C. DOCKET NO. 17700 RECEIVED JUNE 10, 1952

Year	Date Change	Value	Remarks
1942	No Change	1232	No Change
1943	No Change	1232	No Change
1944	No Change	1232	No Change
1945	No Change	1232	No Change
1946	No Change	1232	No Change
1947	No Change	1232	No Change
1948	No Change	1232	No Change
1949	No Change	1232	No Change
1950	No Change	1232	No Change
1951	No Change	1232	No Change
1952	No Change	1232	No Change
1953	No Change	1232	No Change
1954	No Change	1232	No Change
1955	No Change	1232	No Change
1956	No Change	1232	No Change
1957	No Change	1232	No Change
1958	No Change	1232	No Change
1959	No Change	1232	No Change
1960	No Change	1232	No Change
1961	No Change	1232	No Change
1962	No Change	1232	No Change
1963	No Change	1232	No Change
1964	No Change	1232	No Change
1965	No Change	1232	No Change
1966	No Change	1232	No Change
1967	No Change	1232	No Change
1968	No Change	1232	No Change
1969	No Change	1232	No Change
1970	No Change	1232	No Change

RIGHT OF WAY AND TRACK MAP  
# THE TOLEDO AND OHIO CENTRAL RAILWAY  
OPERATED BY  
THE TOLEDO AND OHIO CENTRAL RAILWAY COMPANY  
ST. MARYS BRANCH -- MAIN LINE  
FROM STATION 1500+00 TO STATION 1600+00  
SCALE 1" INCH = 200 FEET  
OFFICE OF VALUATION ENGINEER, COLUMBUS, OHIO  
CORRECTED AS OF JAN. 1, 1952  
OFFICE OF VALUATION ENGINEER, CLEVELAND, OHIO  
OPERATED BY THE NEW YORK CENTRAL RAILROAD COMPANY SUBSEQUENT TO DECEMBER 31, 1951

INDEXED ON MAP 6216 14P5

No.	Owner	Grantee	Instrument	Date	Record	Remarks
1	S. S. Ward	John T. Adams	W. Deed	Dec 31, 1897	DB 736 1486 Apr 27, 1901	2600' case Note No. 1 This is a part of parcel 27, Map 1
2	Rayon Archer	John T. Adams	W. Deed	Dec 1, 1897	DB 736 2028 Apr 16, 1901	2600' case Note No. 1
3	John Warren et al	John T. Adams	W. Deed	Dec 17, 1897	DB 736 1486 Apr 27, 1901	2600' case Note No. 1 Part of this parcel sold to the I. C. & E. Traction Co. by Deed No. 1504
4	John W. Taylor	John T. Adams	W. Deed	Dec 17, 1897	DB 736 1486 Apr 27, 1901	2600' case Note No. 1
5	F. D. A. Thompson	T. A. C. Ry Co	W. Deed	May 4, 1907	DB 7106 1194 June 6, 1907	2600' case Note No. 1
6	Frank Gillenwaters	T. A. C. Ry Co	W. Deed	Jan 25, 1907	DB 7106 1196 June 6, 1907	2600' case Note No. 1
7	State of Ohio	John T. Adams	W. Deed	Feb 16, 1899	Land and Tax Dept File 1609	2600' case Note No. 1 Part of this parcel sold to the I. C. & E. Traction Co. by Deed No. 1504
8	Allen Ranck	John T. Adams	W. Deed	Dec 17, 1897	DB 736 1486 Apr 27, 1901	2600' case Note No. 1
9	J. B. Foraker Jr.	T. A. C. Ry Co	W. Deed	Apr 14, 1909	DB 7107 1546 June 24, 1909	1600' case Note No. 1
10	Geo. H. Warrington	T. A. C. Ry Co	W. Deed	Apr 14, 1909	DB 7107 1546 June 24, 1909	1600' case Note No. 1
11	John R. Warrington	T. A. C. Ry Co	W. Deed	Apr 14, 1909	DB 7107 1546 June 24, 1909	1600' case Note No. 1
12	John R. Warrington	T. A. C. Ry Co	W. Deed	Apr 14, 1909	DB 7107 1546 June 24, 1909	1600' case Note No. 1
13	John R. Warrington	T. A. C. Ry Co	W. Deed	Apr 14, 1909	DB 7107 1546 June 24, 1909	1600' case Note No. 1
14	John R. Warrington	T. A. C. Ry Co	W. Deed	Apr 14, 1909	DB 7107 1546 June 24, 1909	1600' case Note No. 1
15	John R. Warrington	T. A. C. Ry Co	W. Deed	Apr 14, 1909	DB 7107 1546 June 24, 1909	1600' case Note No. 1
16	John R. Warrington	T. A. C. Ry Co	W. Deed	Apr 14, 1909	DB 7107 1546 June 24, 1909	1600' case Note No. 1
17	John R. Warrington	T. A. C. Ry Co	W. Deed	Apr 14, 1909	DB 7107 1546 June 24, 1909	1600' case Note No. 1
18	John R. Warrington	T. A. C. Ry Co	W. Deed	Apr 14, 1909	DB 7107 1546 June 24, 1909	1600' case Note No. 1
19	John R. Warrington	T. A. C. Ry Co	W. Deed	Apr 14, 1909	DB 7107 1546 June 24, 1909	1600' case Note No. 1
20	John R. Warrington	T. A. C. Ry Co	W. Deed	Apr 14, 1909	DB 7107 1546 June 24, 1909	1600' case Note No. 1

No.	Grantee	Grantor	Instrument	Date	Record	Cost No.	Remarks
4A	T. A. C. Ry Co	ANYCRR	STATE OF OHIO	PERM EASE	Nov 7, 1946	262	AFE 66370
7A	do	do	do	do	do	262	do
8A	do	do	do	do	do	262	do
9A	do	do	do	do	do	262	do
10A	do	do	do	do	do	262	do
12A	do	do	do	do	do	262	do
13A	do	do	do	do	do	262	do
14A	do	do	do	do	do	262	do

OWNER	VALUATION	SUB SECTION	SHEET DIV.	SHEET NUMBER	REAL ESTATE REGION
500	3030	0	18		



REVISION	REVIEWED
1911 6-1-10	1918 No Change
1912 do	1919 No Change
1913 do	1920 No Change
1914 do	1921 No Change
1915 do	1922 No Change
1916 do	1923 No Change
1917 do	1924 No Change
1918 do	1925 No Change
1919 do	1926 No Change
1920 do	1927 No Change
1921 do	1928 No Change
1922 do	1929 No Change
1923 do	1930 No Change
1924 do	1931 No Change
1925 do	1932 No Change
1926 do	1933 No Change
1927 do	1934 No Change
1928 do	1935 No Change
1929 do	1936 No Change
1930 do	1937 No Change
1931 do	1938 No Change
1932 do	1939 No Change
1933 do	1940 No Change
1934 do	1941 No Change
1935 do	1942 No Change
1936 do	1943 No Change
1937 do	1944 No Change
1938 do	1945 No Change
1939 do	1946 No Change
1940 do	1947 No Change
1941 do	1948 No Change
1942 do	1949 No Change
1943 do	1950 No Change
1944 do	1951 No Change
1945 do	1952 No Change
1946 do	1953 No Change
1947 do	1954 No Change
1948 do	1955 No Change
1949 do	1956 No Change
1950 do	1957 No Change
1951 do	1958 No Change
1952 do	1959 No Change
1953 do	1960 No Change
1954 do	1961 No Change
1955 do	1962 No Change
1956 do	1963 No Change
1957 do	1964 No Change
1958 do	1965 No Change
1959 do	1966 No Change
1960 do	1967 No Change
1961 do	1968 No Change
1962 do	1969 No Change
1963 do	1970 No Change
1964 do	1971 No Change
1965 do	1972 No Change
1966 do	1973 No Change
1967 do	1974 No Change
1968 do	1975 No Change
1969 do	1976 No Change
1970 do	1977 No Change
1971 do	1978 No Change
1972 do	1979 No Change
1973 do	1980 No Change
1974 do	1981 No Change
1975 do	1982 No Change
1976 do	1983 No Change
1977 do	1984 No Change
1978 do	1985 No Change
1979 do	1986 No Change
1980 do	1987 No Change
1981 do	1988 No Change
1982 do	1989 No Change
1983 do	1990 No Change
1984 do	1991 No Change
1985 do	1992 No Change
1986 do	1993 No Change
1987 do	1994 No Change
1988 do	1995 No Change
1989 do	1996 No Change
1990 do	1997 No Change
1991 do	1998 No Change
1992 do	1999 No Change
1993 do	2000 No Change

18.42 AC. THIS SHEET

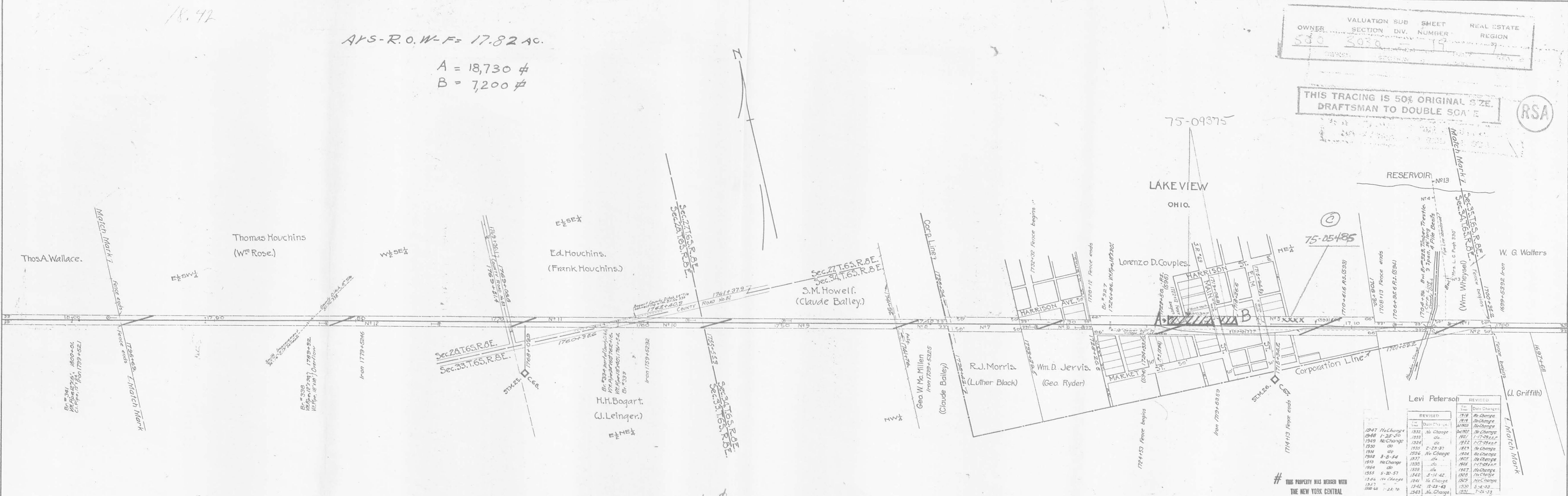
18.42

AYS-R.O.W-F= 17.82 AC.

A = 18,730 #  
B = 7,200 #

OWNER	VALUATION	SUB	SHEET	REAL ESTATE
580	3030		19	REGION

THIS TRACING IS 50% ORIGINAL SIZE  
DRAFTSMAN TO DOUBLE SCALE



Levi Peterson

REVISED	REVISED	REVISED	REVISED
Year	Date	Change	Change
1847	No Change	1832	No Change
1848	1-25-50	1833	do
1849	No Change	1834	do
1850	do	1835	2-25-37
1851	do	1836	do
1852	3-8-54	1837	No Change
1853	No Change	1838	do
1854	do	1839	do
1855	5-20-57	1840	3-14-42
1856	No Change	1841	No Change
1857	do	1842	12-23-43
1858	1-24-70	1843	No Change
1859	do	1844	do
1860	do	1845	do
1861	do	1846	do

# THIS PROPERTY WAS BOUND WITH  
THE NEW YORK CENTRAL  
RAILROAD COMPANY  
JUNE 30, 1852  
AUTHORIZED BY L. C. C. DOCKET NO. 17700  
RECORDED JUNE 10, 1852

RIGHT OF WAY AND TRACK MAP  
# THE TOLEDO AND OHIO CENTRAL RAILWAY  
OPERATED BY \*  
THE TOLEDO AND OHIO CENTRAL RAILWAY COMPANY

ST. MARYS BRANCH -- MAIN LINE  
FROM STATION 1700+35.2 TO STATION 1796+69.  
SCALE 1 INCH = 200 FEET  
JUNE 30, 1918  
OFFICE OF VALUATION ENGINEER, COLUMBUS, OHIO.  
CORRECTED AS OF JAN. 1, 1901  
OFFICE OF VALUATION ENGINEER, CLEVELAND, OHIO  
OPERATED BY THE NEW YORK CENTRAL RAILROAD  
COMPANY SUBSEQUENT TO DECEMBER 31, 1921

V-303  
19

V-3  
19

INDEXED ON MAP  
4216 HP-7

No.	Grantor	Grantee	Instrument	Date	Record	Cont. No.	Remarks
1	W. G. Walters, et al	John T. Adams	W. Deed	Oct 30, 1897	DB V95 P459 Apr 27, 1901	161920	This is a part of parcel #19, Map 16
2	Levi Peterson	John T. Adams	W. Deed	Dec 17, 1897	DB V95 P459 Apr 23, 1901	161920	See Note No. 1
3	Mrs. L. C. Pugh	T & O C Ry Co	Agreement	Feb 17, 1902	Land and Tax Dept File	168120	Right to lay 330' of pipe (water) line
4	Mrs. Jane Love	T & O C Ry Co	Agreement	Feb 17, 1902	Land and Tax Dept File	168220	Right to lay 640' of pipe (water) line
5	Lorenzo D. Couples	John T. Adams	W. Deed	Dec 17, 1897	DB V95 P404 Apr 17, 1901	161870	See Note No. 1
6	Wm. D. Jervis	John T. Adams	W. Deed	Dec 17, 1897	DB V95 P421 Apr 19, 1901	162420	See Note No. 1
7	R. J. Morris	T & O C Ry Co	W. Deed	Apr 10, 1902	DB V96 P607 July 12, 1902	163820	See Note No. 1
8	Geo. W. Millen	John T. Adams	W. Deed	Dec 17, 1897	DB V95 P426 Apr 22, 1901	162620	See Note No. 1
9	Wm. H. Howell	John T. Adams	W. Deed	Dec 30, 1897	DB V95 P460 Apr 19, 1901	162720	See Note No. 1
10	Henry E. Siefert	John T. Adams	W. Deed	Dec 17, 1897	DB V95 P403 Apr 17, 1901	161870	See Note No. 1
11	Edw. M. Houchins	John T. Adams	W. Deed	Jan 19, 1898	DB V95 P419 Apr 19, 1901	162820	See Note No. 1
12	Thos. Houchins	John T. Adams	W. Deed	Jan 10, 1898	DB V95 P419 Apr 19, 1901	162820	See Note No. 1
13	State of Ohio	N.Y.C. & O.R. Co.	Agreement	Feb. 16, 1923	Land and Tax Dept. File	143	Right to construct three inch water pipe line. Comp. Report 34-H.

A. OH. 0 # # # # H 5-9 = 18,400 # = \$2200  
 B- " " H 6-2 = 11,960 # = \$1,435  
 C- " " L 5-4  
 F " " M 4-3

LOGAN COUNTY  
STOKES TOWNSHIP

303-20

No. 1 - Conveyed to D & L N Ry Co by John T. Adams by Q.C. Deed  
 Feb 16, 1899 Recorded Vol. 95 P460 Apr 29, 1901. Cont. No. 1317

V6-P15-F1

18.26 AC

AVS-R.O.W-F = 18.28 AC.

VALUATION SHEET REAL ESTATE REGION  
 OWNER: 570 SECTION: 3030 NUMBER: 0 20



F. OH D 000 M 43

**SCHEDULE OF PROPERTY**

No.	Grantor	Grantee	Instrument	Date	Record	Dist.	Cont. No.	Remarks
1	T. A. Wallace	John F. Adams	W. Deed	Jan 10, 1898	DB 796	1458	Apr 27, 1901	3533 2/4 Use Note No. 1
2	Frederick S. Taylor	T & O C Ry Co	W. Deed	Dec 29, 1901	DB 796	1316	Feb 4, 1909	3536 2/4
3	Michael Cossel	T & O C Ry Co	W. Deed	Apr 19, 1901	DB 796	1664	June 18, 1901	3538 2/4
4	Lewis W. Hall, et al	John F. Adams	W. Deed	Jan 17, 1898	DB 795	1418	Feb 19, 1901	3534 2/4 Use Note No. 1
5	L. F. Shoffstall	T & O C Ry Co	W. Deed	Apr 19, 1901	DB 796	1667	June 17, 1901	3539 2/4
6	No paper title found.	Held by adverse possession and claimed by Ry Co				2859 2/4	W. Deed	2859 2/4 W. Deed in transfer of contiguous land DB 794 1456

Note:-  
 No. 1 - Conveyed to D & L E Ry Co by John F. Adams by G.C. Deed Feb 18, 1899. Recorded Vol. 96 1460 Apr 29, 1901. Cont. No. 1317

LOGAN COUNTY  
 STOKES TOWNSHIP

THIS TRACING IS 50% ORIGINAL SIZE.  
 DRAFTSMAN TO DOUBLE SCALE

SHEET NO. 21 OF 24 OF THE TOLEDO AND OHIO CENTRAL RAILROAD.  
 BY MEANS BRANCH - MAIN LINE.  
 FROM SURVEY STATION 1750+65. TO SURVEY STATION 1900+00.  
 Valuation Engineer

REVISED	REVISED	REVISED	
Year	Date Changed	Date Changed	
1941	No Change	1932	No Change
1940	do	1933	do
1939	do	1934	do
1938	do	1935	do
1937	do	1936	do
1936	do	1937	do
1935	do	1938	do
1934	do	1939	do
1933	do	1940	do
1932	do	1941	do
1931	do	1942	do
1930	do	1943	do
1929	do	1944	do
1928	do	1945	do
1927	do	1946	do
1926	do	1947	do
1925	do	1948	do
1924	do	1949	do
1923	do	1950	do
1922	do	1951	do
1921	do	1952	do
1920	do	1953	do
1919	do	1954	do
1918	do	1955	do
1917	do	1956	do
1916	do	1957	do
1915	do	1958	do
1914	do	1959	do
1913	do	1960	do
1912	do	1961	do
1911	do	1962	do
1910	do	1963	do
1909	do	1964	do
1908	do	1965	do
1907	do	1966	do
1906	do	1967	do
1905	do	1968	do
1904	do	1969	do
1903	do	1970	do
1902	do	1971	do
1901	do	1972	do
1900	do	1973	do

# THIS PROPERTY WAS MERGED WITH  
 THE NEW YORK CENTRAL  
 RAILROAD COMPANY  
 JUNE 30, 1952  
 AUTHORIZED BY I. C. C. Docket No. 17700  
 ORDERED JUNE 10, 1952

RIGHT OF WAY AND TRACK MAP  
 # THE TOLEDO AND OHIO CENTRAL RAILWAY  
 OPERATED BY \*  
 THE TOLEDO AND OHIO CENTRAL RAILWAY COMPANY

ST. MARYS BRANCH -- MAIN LINE  
 FROM STATION 1750+65. TO STATION 1900+00  
 SCALE 1 INCH = 200 FEET  
 JUNE 30, 1918

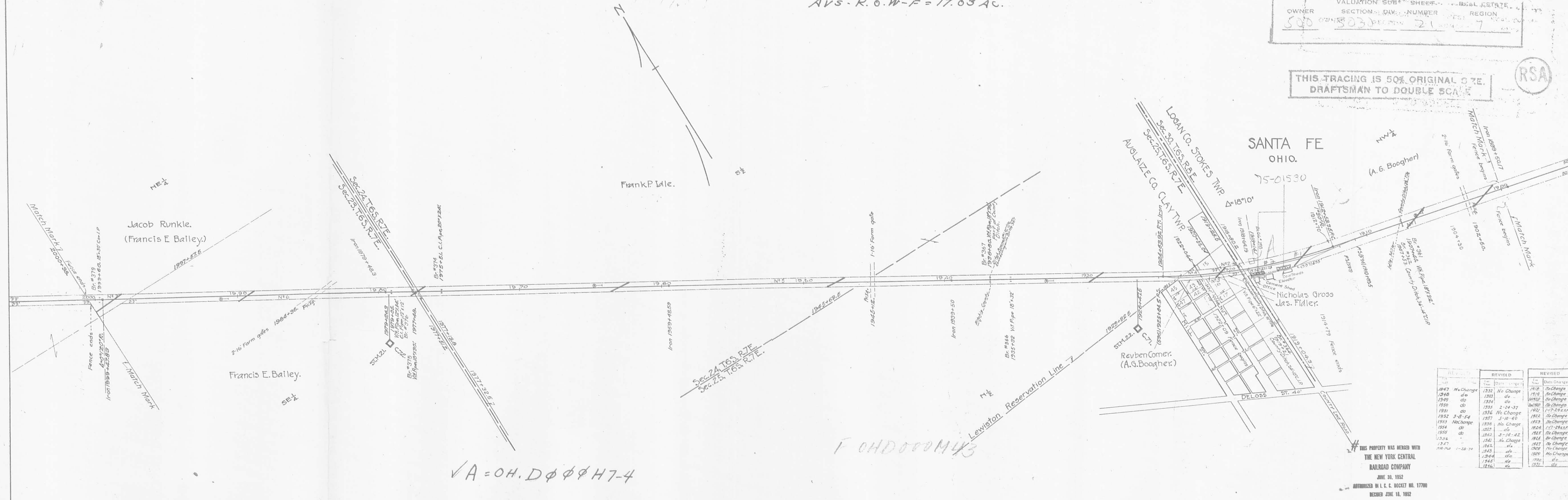
INDEXED ON MAP  
 6216 1470



AVS - R. O. W - F = 17.03 AC.

VALUATION SHEET SHEET 21 OF 27  
 OWNER 500 DIV. NUMBER 3030 REGION 21  
 REGION 7

THIS TRACING IS 50% ORIGINAL SIZE  
 DRAFTSMAN TO DOUBLE SCALE



REVISION	REVISION	REVISION
1897 No Change	1922 No Change	1910 No Change
1940 do	1923 do	1910 No Change
1949 do	1924 do	1910 No Change
1950 do	1925 2-24-37	1910 No Change
1951 do	1926	1910 No Change
1952 3-8-54	1926 No Change	1912 No Change
1953 No Change	1926 No Change	1923 No Change
1954 do	1927 3-10-45	1924 127-24-55
1955 do	1928 3-18-42	1925 No Change
1956 do	1928 No Change	1926 No Change
1957 do	1929 do	1927 No Change
1958 do	1929 do	1928 No Change
1959 do	1930 do	1929 do
1960 do	1931 do	1930 do
1961 do	1932 do	1931 do

SCHEDULE OF PROPERTY

No	Grantor	Grantee	Instrument	Date	Record	Dist. No.	Remarks
1	No paper title found.	Held by adverse possession and claimed by Ry Co				3489720 R/W exempted in transfer of con- (LOGAN COUNTY)	
2	Nicholas Gross	John T. Adams	W. Deed	Dec 20, 1897	DB V74 P189 Apr 8, 1901 1656 3		Trigons land DB V94 P486 (AUGLAIZE COUNTY)
3	Jas. Fidler	John T. Adams	W. Deed	Dec 20, 1897	DB V74 P190 Apr 8, 1901 1659 4		See Note No. 1
4	Reuben Comer	John T. Adams	W. Deed	Dec 20, 1897	DB V74 P191 Apr 8, 1901 1660 5		See Note No. 2
5	F. E. Idle	John T. Adams	W. Deed	Jan 18, 1898	DB V74 P187 Apr 8, 1901 1643 6		See Note No. 1
6	Francis E. Bailey	John T. Adams	W. Deed	Jan 7, 1899	DB V74 P193 Apr 8, 1901 1648 7		See Note No. 2
7	Jacob Runkle	John T. Adams	W. Deed	Dec 20, 1897	DB V74 P194 Apr 8, 1901 1648 8		See Note No. 2

Notes:-  
 No. 1 - Conveyed to T & O C Ry Co by John T. Adams by G. C. Deed Feb 22, 1901. Recorded Vol. 73 P246 Apr 8, 1901. Dist. No. 1644  
 No. 2 - Conveyed to D & L N Ry Co by John T. Adams by G. C. Deed Feb 10, 1899. Recorded Vol. 73 P248 Apr 8, 1901. Dist. No. 1646

AUGLAIZE COUNTY CLAY TOWNSHIP  
 LOGAN COUNTY STOKES TOWNSHIP

THIS PROPERTY WAS MERGED WITH THE NEW YORK CENTRAL RAILROAD COMPANY  
 JUNE 30, 1952  
 AUTHORIZED BY U. S. C. Docket No. 17700  
 DECEMBER 16, 1952  
 RIGHT OF WAY AND TRACK MAP  
 # THE TOLEDO AND OHIO CENTRAL RAILWAY  
 OPERATED BY \*  
 THE TOLEDO AND OHIO CENTRAL RAILWAY COMPANY

ST. MARYS BRANCH -- MAIN LINE  
 FROM STATION 1900+00 TO STATION 2000+38  
 SCALE 1 INCH = 200 FEET  
 JUNE 30, 1916  
 OFFICE OF VALUATION ENGINEER, COLUMBUS, OHIO.  
 CORRECTED AS OF JAN. 1, 1951  
 OFFICE OF VALUATION ENGINEER, CLEVELAND, OHIO  
 \* OPERATED BY THE NEW YORK CENTRAL RAILROAD COMPANY SUBSEQUENT TO DECEMBER 31, 1921.

INDEXED ON MAP  
 6216 4P-9

303-11  
 344-3-5

V6-Pis-F1