

REC'D 11-15-00 GMM OK ✓

Lee Surveying and Mapping Co., Inc.

Land Surveys • Topography • Subdivisions • Construction Layout

117 N. Madriver St.
Bellefontaine OH 43311



Phone: (937) 593-7335
Fax: (937) 593-7444

YOUNKMAN SIDEWALK EASEMENT

Lying in Virginia Military Survey 4399, City of Bellefontaine, Lake Township, Logan County, Ohio.

Being a sidewalk easement over Lot 4970 of Shadowbrook Subdivision, Plat Cabinet B, Slide 16 of the Logan County Records of Plats and being more particularly described as follows:

Beginning at a 5/8 inch iron rod found at the most easterly corner of said Lot 4970 on the right-of-way line of Shawnee Trace (60 feet wide).

THENCE, with the southeasterly line of Lot 4970, S 41°-33'-37" W, a distance of 26.00 feet to a point.

THENCE, N 00°-14'-34" W, a distance of 14.98 feet to a point.

THENCE, with a curve to the right having a central angle of 6°-08'-16", a radius of 811.10 feet, an arc length of 86.89 feet, a tangent of 43.49 feet, a chord length of 86.85 feet bearing N 44°-39'-55" W to a point.

THENCE, N 41°-28'-04" W, a distance of 28.11 feet to a point.

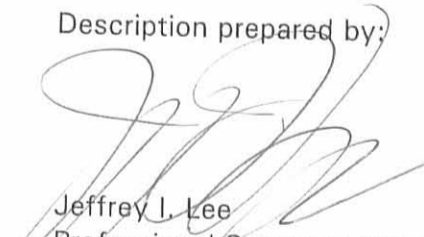
THENCE, N 41°-33'-37" E, a distance of 15.00 feet to a point on the southwesterly right-of-way of Shawnee Trace.

THENCE, with the northeasterly line of Lot 4970 and the southwesterly line of Shawnee Trace, S 41°-28'-04" E, a distance of 28.11 feet to a 5/8 inch iron rod found.

THENCE, with the northeasterly line of Lot 4970, the southwesterly line of Shawnee Trace and a curve to the left with a central angle of 6°-58'-20", a radius of 796.21 feet, an arc length of 96.89 feet, a tangent of 48.50 feet, a chord length of 96.83 feet bearing S 44°-57'-14" E to the place of beginning.

The basis for bearings is the center-line of Shawnee Trace being N 41°-28'-04" W, and all other bearings are from angles and distances measured in a field survey by Lee Surveying and Mapping Co., Inc. on November 10, 2000.

Description prepared by:


Jeffrey I. Lee
Professional Surveyor 6359
November 10, 2000

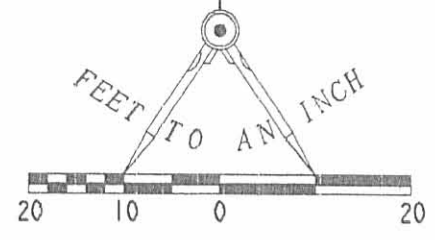


L-374

INDEXED ON MAP
62566D

RECID 11-15-00 SWM OK

SCALE
20



LEGEND:

○ 5/8 INCH IRON ROD FOUND

(BASIS FOR BEARINGS)
SHAWNEE TRACE (60' R/W)
N 41°28'04"W

30' SETBACK LINE

15.00'
N 41°33'37"E

S 41°28'04"E
28.11'
N 41°28'04"W
28.11'

CURVE	DELTA ANGLE	RADIUS	ARC	TANGENT	CHORD	CHORD BEARING
C 1	6°58'20"	796.21'	96.89'	48.50'	96.83'	S 44°57'14"E
C 2	6°08'16"	811.10'	86.89'	43.49'	86.85'	N 44°39'55"W

LOT, 4970

**SURVEY OF A
SIDEWALK EASEMENT
OVER LOT 4970
SHADOWBROOK SUBDIVISION
PLAT CABINET B, SLIDE 16
VIRGINIA MILITARY SURVEY 4399
CITY OF BELLEFONTAINE
LAKE TOWNSHIP
LOGAN COUNTY, OHIO**

SIDEWALK EASEMENT
C1 96.89'
C2 86.89'

OPEN SPACE DRAINAGE EASEMENT
12' UTILITY EASEMENT

14.98'
N 00°14'34"W

26.00'
S 41°33'37"W

INDEXED ON MAP
6256 6P

2 WORKING DAYS



CALL TOLL FREE 800-362-2764
OHIO UTILITIES PROTECTION SERVICE.



SURVEYED BY:
[Signature]
JEFFREY I. LEE
PROFESSIONAL SURVEYOR 6359
NOVEMBER 10, 2000

COPYRIGHT 2000 BY:
LEE SURVEYING & MAPPING CO., INC.
117 North Madriver Street
BELLEFONTAINE, OHIO 43311
(937) 593-7335
SHADESMT L-374-5

ORIGINAL STAMP IN GREEN

D-390

L-374-5

REC'D 5-2-96 SAM JK



Lee Surveying and Mapping Co., Inc.



Farm Surveys • Lot Surveys • Topography • Subdivisions • Construction Layout

143 EAST COLUMBUS AVENUE
BELLEFONTAINE, OHIO 43311

(513) 593-7335
FAX (513) 593-7444

EXCEPTION TO EXHIBIT "A"

"DECLARATION OF COVENANTS, CONDITIONS, RESTRICTIONS AND ASSESSMENTS, AND RESERVATION OF EASEMENT FOR SHADOWBROOKE RESIDENTIAL COMMUNITY"

Lying in Virginia Military Survey 4339, City of Bellefontaine, Lake Township, Logan County, Ohio.

Being a part of the M.Y. Development, Ltd. original 52.953 acre tract as deeded and described in Official Record 270, Page 659 of the Logan County Records of Deeds and being more particularly described for exclusion from the Covenants of the Shadowbrooke Residential Community as follows:

Beginning at a point on the westerly limited access right-of-way line of U.S. Route 33 and the northerly limited access right-of-way of Brown Avenue and being 170.01 feet right of center-line Station 888 + 50 of the 1965 Ohio Department of Transportation survey of U.S. Route 33.

THENCE, with the limited access right-of-way of Brown Avenue, S 45°-11'-08" W, a distance of 290.73 feet to the TRUE POINT OF BEGINNING, passing a concrete right-of-way monument found at 242.00 feet.

THENCE, with the limited access right-of-way of Brown Avenue, S 45°-11'-08" W, a distance of 122.00 feet to a broken concrete right-of-way monument found 85 feet right of center-line of Brown Avenue Station 36 + 26.11 of the aforesaid 1965 survey.

THENCE, with the limited access right-of-way of Brown Avenue, S 35°-51'-19" W, a distance of 277.56 feet to a concrete right-of-way monument found 40 feet right of Brown Avenue center-line Station 39 + 00 and the end of the limited access right-of-way.

THENCE, with the westerly end of the limited access right-of-way S 31°-46'-49" E, a distance of 5.75 feet to a point on the northerly right-of-way of Brown Avenue (60 feet wide).

THENCE, with the northerly right-of-way of Brown Avenue, S 66°-06'-34" W, a distance of 112.00 feet to a point.

THENCE, with the proposed right-of-way of the extension of Shawnee Trace the following three courses:

with a curve to the right having a central angle of 90°-00'-00", a radius of 25.00 feet, an arc distance of 39.27 feet, a chord bearing N 68°-53'-26" W, a distance of 35.36 feet to a point.

N 23°-53'-26" W, a distance of 83.80 feet to a point.

with a curve to the right having a central angle of 33°-46'-17", a radius of 363.70 feet, an arc distance of 214.37 feet, a chord bearing N 07°-00'-17" W, a distance of 211.28 feet to a point.

THENCE, N 77°-00'-16" E, a distance of 194.39 feet to a point.

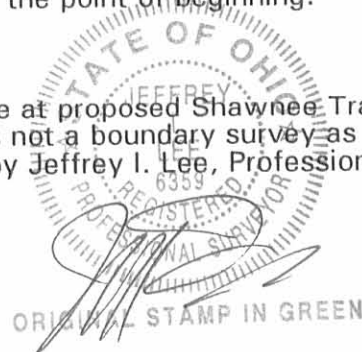
THENCE, N 61°-51'-28" E, a distance of 200.00 feet to a point.

THENCE, S 44°-48'-52" E, a distance of 107.00 feet to the point of beginning.

Containing 2.271 acres.

The basis for bearings is the center-line of Brown Avenue at proposed Shawnee Trace being S 66°-06'-34" W, and all other bearings are calculated. This is not a boundary survey as defined in Ohio Administrative Code 4733-37. This description was prepared by Jeffrey I. Lee, Professional Surveyor 6359, on May 1, 1996.

INDEXED ON MAP
0254 7D

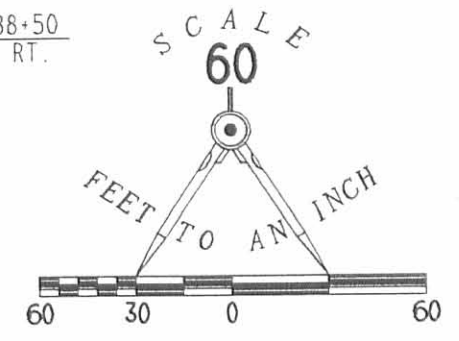


L 374

2 WORKING DAYS
BEFORE YOU DIG
 CALL TOLL FREE **800-362-2764**
 OHIO UTILITIES PROTECTION SERVICE.



33
 STA. 888+50
 170.01 RT.



● R/W MONUMENT FOUND

NOTE:

THIS IS NOT A BOUNDARY SURVEY AS DEFINED IN OHIO ADMINISTRATIVE CODE 4733-37, AND IS BASED ON A FIELD SURVEY PERFORMED JAN. 21, 1988

EXCEPTION TO EXHIBIT A "DECLARATION OF COVENANTS, CONDITIONS, RESTRICTIONS AND ASSESSMENTS, AND RESERVATION OF EASEMENT FOR SHADOWBROOKE RESIDENTIAL COMMUNITY"
2.271 ACRES OUT OF THE M.Y. DEVELOPMENT, LTD. ORIGINAL 52.953 ACRE TRACT
OFFICIAL RECORD 270, PAGE 659
VIRGINIA MILITARY SURVEY 4339
CITY OF BELLEFONTAINE
LAKE TOWNSHIP, LOGAN COUNTY, OHIO



ORIGINAL STAMP IN GREEN

REFERENCES
 O.D.O.T.
 LOG-33-(10.85) PART II
 LOT-33-(14.18), DATED 1965

CURVE	DELTA ANGLE	RADIUS	ARC	TANGENT	CHORD	CHORD BEARING
C 1	90° 00' 00"	25.00'	39.27'	25.00'	35.36'	N 68° 53' 26" W
C 2	33° 46' 17"	363.70'	214.37'	110.40'	211.28'	N 07° 00' 17" W

INDEXED ON MAP
 6254 7P

PREPARED ON APRIL 26, 1996
 COPYRIGHT 1996 BY:
LEE SURVEYING & MAPPING CO., INC.
 143 East Columbus Avenue
 BELLEFONTAINE, OHIO 43311
 (513) 593-7335

D 281 SHBLOT56

L-374-4

REC'D 10-10-05 8M OK

Lee Surveying and Mapping Co., Inc.

Land Surveys • Topography • Subdivisions • Construction Layout

117 N. Madriver St.
Bellefontaine OH 43311



Phone: (937) 593-7335
Fax: (937) 593-7444

1975-2005 - 30 YEARS OF EXCELLENCE

SHADOWBROOKE SUBDIVISION PHASE III WALKWAY EASEMENT #1 0.003 ACRE

Lying in Virginia Military Survey 5245, City of Bellefontaine, Lake Township, Logan County, Ohio.

Being a walkway easement over Lot 5086 of Shadowbrooke Subdivision Phase III as recorded in Plat Cabinet B, Slides 96A & B of the Logan County Records of Plats and being more particularly described as follows:

Beginning at a 5/8 inch iron rod set at the southwest corner of Lot 5086.

THENCE, with the south line of Lot 5086 and the north line of Lot 5085, S 69°-05'-31"E, a distance of 38.18 feet to a point at the TRUE POINT OF BEGINNING.

THENCE, with the east right-of-way of a 20 feet wide walkway easement, N 5°-17'-54"E, a distance of 41.20 feet to a point.

THENCE, S 3°-18'-46"E, a distance of 43.51 feet to a point.

THENCE, with the south line of Lot 5086 and the north line of Lot 5085, N 69°-05'-31"W, a distance of 6.76 feet to the point of beginning.

Containing 0.003 acre.

The basis for bearings is the south line of Shadowbrooke Subdivision Phase II, being S 87°-11'-28"E, and all other bearings are from angles and distances measured in a field survey by Lee Surveying and Mapping Co., Inc. on September 28, 2005.



ORIGINAL STAMP IN GREEN

Description prepared by:

Jeffrey I. Lee
Professional Surveyor 6359
October 4, 2005

L-374

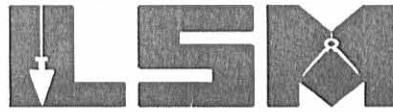
INDEXED ON MAP
6256.8D-1

REC'D 10-10-05 4M OK

Lee Surveying and Mapping Co., Inc.

Land Surveys • Topography • Subdivisions • Construction Layout

117 N. Madriver St.
Bellefontaine OH 43311



Phone: (937) 593-7335
Fax: (937) 593-7444

1975-2005 - 30 YEARS OF EXCELLENCE

SHADOWBROOKE SUBDIVISION PHASE III WALKWAY EASEMENT #2 0.025 ACRE

Lying in Virginia Military Survey 5245, City of Bellefontaine, Lake Township, Logan County, Ohio.

Being a walkway easement over and through Lot 5085 of Shadowbrooke Subdivision Phase III as recorded in Plat Cabinet B, Slides 96A & B of the Logan County Records of Plats and being more particularly described as follows:

Beginning at a 5/8 inch iron rod set at the southwest corner of Lot 5085.

THENCE, with the south line of Lot 5085 and the north line of Lot 5084, S 69°-05'-31"E, a distance of 35.66 feet to a point at the TRUE POINT OF BEGINNING.

THENCE, with the east right-of-way of a 20 feet wide walkway easement, N 5°-17'-54"E, a distance of 93.45 feet to a point on the north line of Lot 5085 and the south line of Lot 5086.

THENCE, with the north line of Lot 5085 and the south line of Lot 5086, S 69°-05'-31"E, a distance of 6.76 feet to a point.

THENCE, S 3°-18'-46"E, a distance of 38.25 feet to a point.

THENCE, S 2°-31'-40"W, a distance of 23.77 feet to a point.

THENCE, S 6°-50'-25"W, a distance of 16.67 feet to a point.

THENCE, S 10°-13'-17"W, a distance of 16.68 feet to a point.

THENCE, with the south line of Lot 5085 and the north line of Lot 5084, N 69°-05'-31"W, a distance of 11.95 feet to the point of beginning.

Containing 0.025 acre.

The basis for bearings is the south line of Shadowbrooke Subdivision Phase II, being S 87°-11'-28"E, and all other bearings are from angles and distances measured in a field survey by Lee Surveying and Mapping Co., Inc. on September 28, 2005.



ORIGINAL STAMP IN GREEN

Description prepared by:

Jeffrey I. Lee
Jeffrey I. Lee
Professional Surveyor 6359
October 4, 2005

L-374

INDEXED ON MAP
6256802

REVISED 10-10-05 JML/OK

Lee Surveying and Mapping Co., Inc.

Land Surveys • Topography • Subdivisions • Construction Layout

117 N. Madriver St.
Bellefontaine OH 43311



Phone: (937) 593-7335
Fax: (937) 593-7444

1975-2005 - 30 YEARS OF EXCELLENCE

SHADOWBROOKE SUBDIVISION PHASE III WALKWAY EASEMENT #3 0.018 ACRE

Lying in Virginia Military Survey 5245, City of Bellefontaine, Lake Township, Logan County, Ohio.

Being a walkway easement over and through Lot 5084 of Shadowbrooke Subdivision Phase III as recorded in Plat Cabinet B, Slides 96A & B of the Logan County Records of Plats and being more particularly described as follows:

Beginning at a 5/8 inch iron rod set at the southwest corner of Lot 5084.

THENCE, with the south line of Lot 5084 and the north line of Lot 5083, N 80°-20'-18"E, a distance of 31.43 feet to a point at the TRUE POINT OF BEGINNING.

THENCE, with the east right-of-way of a 20 feet wide walkway easement, N 5°-17'-54"E, a distance of 136.85 feet to a point on the north line of Lot 5084 and the south line of Lot 5085.

THENCE, with the north line of Lot 5084 and the south line of Lot 5085, S 69°-05'-31"E, a distance of 11.95 feet to a point.

THENCE, S 10°-13'-17"W, a distance of 134.13 feet to the point of beginning.

Containing 0.018 acre.

The basis for bearings is the south line of Shadowbrooke Subdivision Phase II, being S 87°-11'-28"E, and all other bearings are from angles and distances measured in a field survey by Lee Surveying and Mapping Co., Inc. on September 28, 2005.



ORIGINAL STAMP IN GREEN

Description prepared by:

[Signature]
Jeffrey I. Lee
Professional Surveyor 6359
October 4, 2005

L-374

INDEXED ON MAP
6256 8D-3

REC'D 10 10-05 8M OK

Lee Surveying and Mapping Co., Inc.

Land Surveys • Topography • Subdivisions • Construction Layout

117 N. Madriver St.
Bellefontaine OH 43311



Phone: (937) 593-7335
Fax: (937) 593-7444

1975-2005 - 30 YEARS OF EXCELLENCE

SHADOWBROOKE SUBDIVISION PHASE III WALKWAY EASEMENT #4 0.004 ACRE

Lying in Virginia Military Survey 5245, City of Bellefontaine, Lake Township, Logan County, Ohio.

Being a walkway easement over Lot 5083 of Shadowbrooke Subdivision Phase III as recorded in Plat Cabinet B, Slides 96A & B of the Logan County Records of Plats and being more particularly described as follows:

Beginning at a 5/8 inch iron rod set at the southwest corner of Lot 5082.

THENCE, with the east line of Lot 5083 and the west line of Lot 5082, N 28°-13'-24"E, a distance of 103.36 feet to a point at the TRUE POINT OF BEGINNING.

THENCE, with the east right-of-way of a 20 feet wide walkway easement, N 35°-26'-19"W, a distance of 35.09 feet to a point.

THENCE, S 54°-06'-32"E, a distance of 31.73 feet to a point on the east line of Lot 5083 and the west line of Lot 5082.

THENCE, with the east line of Lot 5083 and the west line of Lot 5082, S 28°-13'-24"W, a distance of 11.34 feet to the point of beginning.

Containing 0.004 acre.

The basis for bearings is the south line of Shadowbrooke Subdivision Phase II, being S 87°-11'-28"E, and all other bearings are from angles and distances measured in a field survey by Lee Surveying and Mapping Co., Inc. on September 28, 2005.

Description prepared by:



[Signature]
Jeffrey I. Lee
Professional Surveyor 6359
October 4, 2005

ORIGINAL STAMP IN GREEN

L-374

INDEXED ON MAP
6256 8D-4

FILED 10-10-05 5:51 PM OK
Lee Surveying and Mapping Co., Inc.

Land Surveys • Topography • Subdivisions • Construction Layout

117 N. Madriver St.
Bellefontaine OH 43311



Phone: (937) 593-7335
Fax: (937) 593-7444

1975-2005 - 30 YEARS OF EXCELLENCE

**SHADOWBROOKE SUBDIVISION PHASE III
WALKWAY EASEMENT #5
0.085 ACRE**

Lying in Virginia Military Surveys 4399 and 5245, City of Bellefontaine, Lake Township, Logan County, Ohio.

Being a walkway easement over Lot 5082 of Shadowbrooke Subdivision Phase III as recorded in Plat Cabinet B, Slides 96A & B of the Logan County Records of Plats and being more particularly described as follows:

Beginning at a 5/8 inch iron rod set at the southwest corner of Lot 5082.

THENCE, with the east line of Lot 5083 and the west line of Lot 5082, N 28°-13'-24"E, a distance of 103.36 feet to a point at the TRUE POINT OF BEGINNING.

THENCE, with the east line of Lot 5083 and the west line of Lot 5082, N 28°-13'-24"E, a distance of 11.34 feet to a point.

THENCE, S 54°-06'-32"E, a distance of 11.20 feet to a point.

THENCE, S 71°-48'-48"E, a distance of 14.27 feet to a point.

THENCE, S 83°-08'-47"E, a distance of 14.96 feet to a point.

THENCE, N 89°-55'-39"E, a distance of 75.05 feet to a point.

THENCE, S 85°-46'-28"E, a distance of 31.68 feet to a point.

THENCE, S 88°-05'-06"E, a distance of 17.79 feet to a point.

THENCE, with the north right-of-way of a 20 feet wide walkway easement, S 75°-04'-30"W, a distance of 150.40 feet to a point.

THENCE, with the east right-of-way of a 20 feet wide walkway easement, the following two courses:

N 20°-57'-57"W, a distance of 31.89 feet to a point.

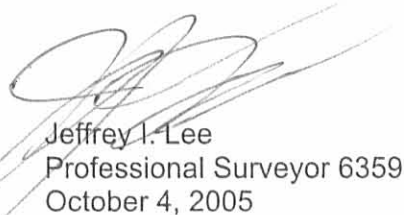
N 35°-26'-19"W, a distance of 17.85 feet to the point of beginning.

Containing 0.085 acre.

The basis for bearings is the south line of Shadowbrooke Subdivision Phase II, being S 87°-11'-28"E, and all other bearings are from angles and distances measured in a field survey by Lee Surveying and Mapping Co., Inc. on September 28, 2005.

Description prepared by:



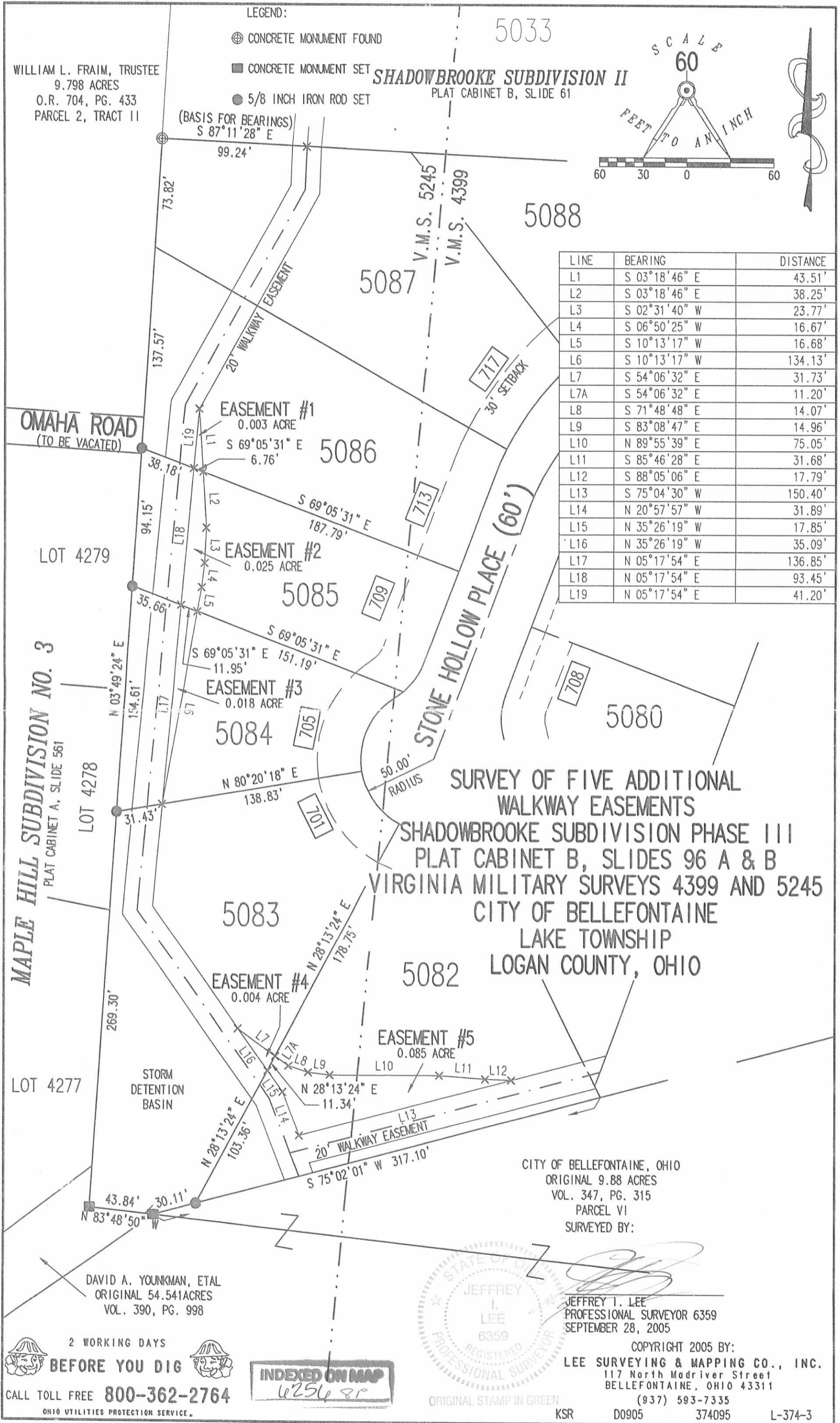

Jeffrey I. Lee
Professional Surveyor 6359
October 4, 2005

ORIGINAL STAMP IN GREEN

INDEXED ON MAP
6256805

L-374

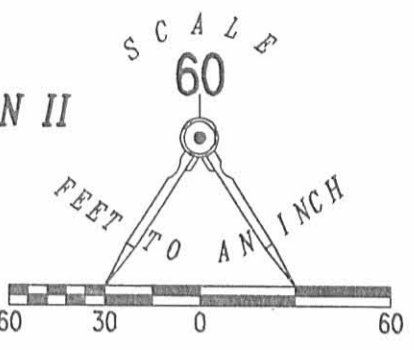
REC'D 10-10-058M dk



LEGEND:
 ⊕ CONCRETE MONUMENT FOUND
 ■ CONCRETE MONUMENT SET
 ● 5/8 INCH IRON ROD SET

5033

SHADOWBROOKE SUBDIVISION II
 PLAT CABINET B, SLIDE 61



WILLIAM L. FRAM, TRUSTEE
 9.798 ACRES
 O.R. 704, PG. 433
 PARCEL 2, TRACT 11

LINE	BEARING	DISTANCE
L1	S 03°18'46" E	43.51'
L2	S 03°18'46" E	38.25'
L3	S 02°31'40" W	23.77'
L4	S 06°50'25" W	16.67'
L5	S 10°13'17" W	16.68'
L6	S 10°13'17" W	134.13'
L7	S 54°06'32" E	31.73'
L7A	S 54°06'32" E	11.20'
L8	S 71°48'48" E	14.07'
L9	S 83°08'47" E	14.96'
L10	N 89°55'39" E	75.05'
L11	S 85°46'28" E	31.68'
L12	S 88°05'06" E	17.79'
L13	S 75°04'30" W	150.40'
L14	N 20°57'57" W	31.89'
L15	N 35°26'19" W	17.85'
L16	N 35°26'19" W	35.09'
L17	N 05°17'54" E	136.85'
L18	N 05°17'54" E	93.45'
L19	N 05°17'54" E	41.20'

SURVEY OF FIVE ADDITIONAL WALKWAY EASEMENTS
 SHADOWBROOKE SUBDIVISION PHASE III
 PLAT CABINET B, SLIDES 96 A & B
 VIRGINIA MILITARY SURVEYS 4399 AND 5245
 CITY OF BELLEFONTAINE
 LAKE TOWNSHIP
 LOGAN COUNTY, OHIO

CITY OF BELLEFONTAINE, OHIO
 ORIGINAL 9.88 ACRES
 VOL. 347, PG. 315
 PARCEL VI
 SURVEYED BY:

DAVID A. YOUNKMAN, ETAL
 ORIGINAL 54.541 ACRES
 VOL. 390, PG. 998



JEFFREY T. LEE
 PROFESSIONAL SURVEYOR 6359
 SEPTEMBER 28, 2005

COPYRIGHT 2005 BY:
LEE SURVEYING & MAPPING CO., INC.
 117 North Madriver Street
 BELLEFONTAINE, OHIO 43311
 (937) 593-7335

2 WORKING DAYS
BEFORE YOU DIG
 CALL TOLL FREE **800-362-2764**
 OHIO UTILITIES PROTECTION SERVICE.

INDEXED ON MAP
 625688

ORIGINAL STAMP IN GREEN

KSR D0905 374095 L-374-3

Lee Surveying and Mapping Co., Inc.

Land Surveys • Topography • Subdivisions • Construction Layout

117 N. Madriver St.
Bellefontaine OH 43311



Phone: (937) 593-7335
Fax: (937) 593-7444

M.Y. DEVELOPMENT, LTD. 2.569 ACRES

Lying in Virginia Military Survey 4399, City of Bellefontaine, Lake Township, Logan County, Ohio.

Being out of the M.Y. Development, LTD. original 52.953 acre tract as deeded and described in Official Record 270, Page 659 of the Logan County Records of Deeds and being more particularly described as follows:

Beginning at a MAG nail set on the north right-of-way of Shawnee Trace (60 feet wide) at the southeast corner of the Whetstone Commons Condominium Phase III (Plat Cabinet B, Slide 53B-57B).

THENCE, with the easterly lines of the Whetstone Commons Condominium Phase III, the following two (2) courses:

N 39°-41'-22" E, a distance of 112.93 feet to a 5/8 inch iron rod set.

N 29°-42'-23" E, a distance of 135.00 feet to a 5/8 inch rod set on the south line of the limited access right-of-way of U.S. Route 33.

THENCE, with the south lines of the limited access right-of-way of U.S. Route 33, the following three (3) courses:

S 46°-10'-10" E, a distance of 43.31 feet to a 5/8 inch iron rod set.

S 59°-18'-07" E, a distance of 340.90 feet to a 5/8 inch iron rod set.

S 47°-57'-50" E, a distance of 72.45 feet to a 5/8 inch iron rod set.

THENCE, S 23°-53'-32" W, a distance of 202.90 feet to a 5/8 inch iron rod set on the north right-of-way of Shawnee Trace extended.

THENCE, with the north right-of-way extended of Shawnee Trace, N 66°-06'-28" W, a distance of 260.00 feet to a 5/8 inch iron rod set.

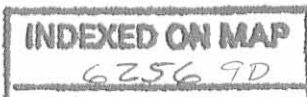
THENCE, with the north right-of-way extended and the north right-of-way of Shawnee Trace with a curve to the right having a central angle of 18°-24'-28", a radius of 736.21 feet, an arc length of 236.53 feet, a chord bearing N 56°-54'-14" W, a distance of 235.51 feet to the point of beginning.

Containing 2.569 acres.

The basis for bearings is the easterly line of Whetstone Commons Condominium being N 39°-41'-22" E, and all other bearings are from angles and distances measured in a field survey by Lee Surveying and Mapping Co., Inc. on March 19, 2001.

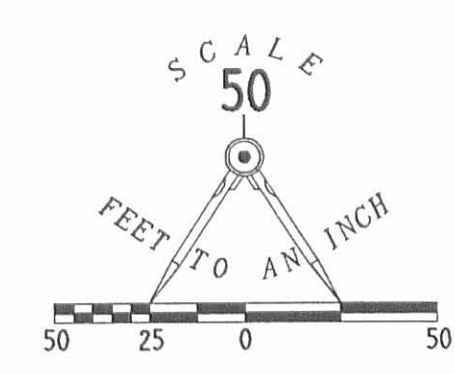
Description prepared by:

Jeffrey I. Lee
Professional Surveyor 6359
April 10, 2001



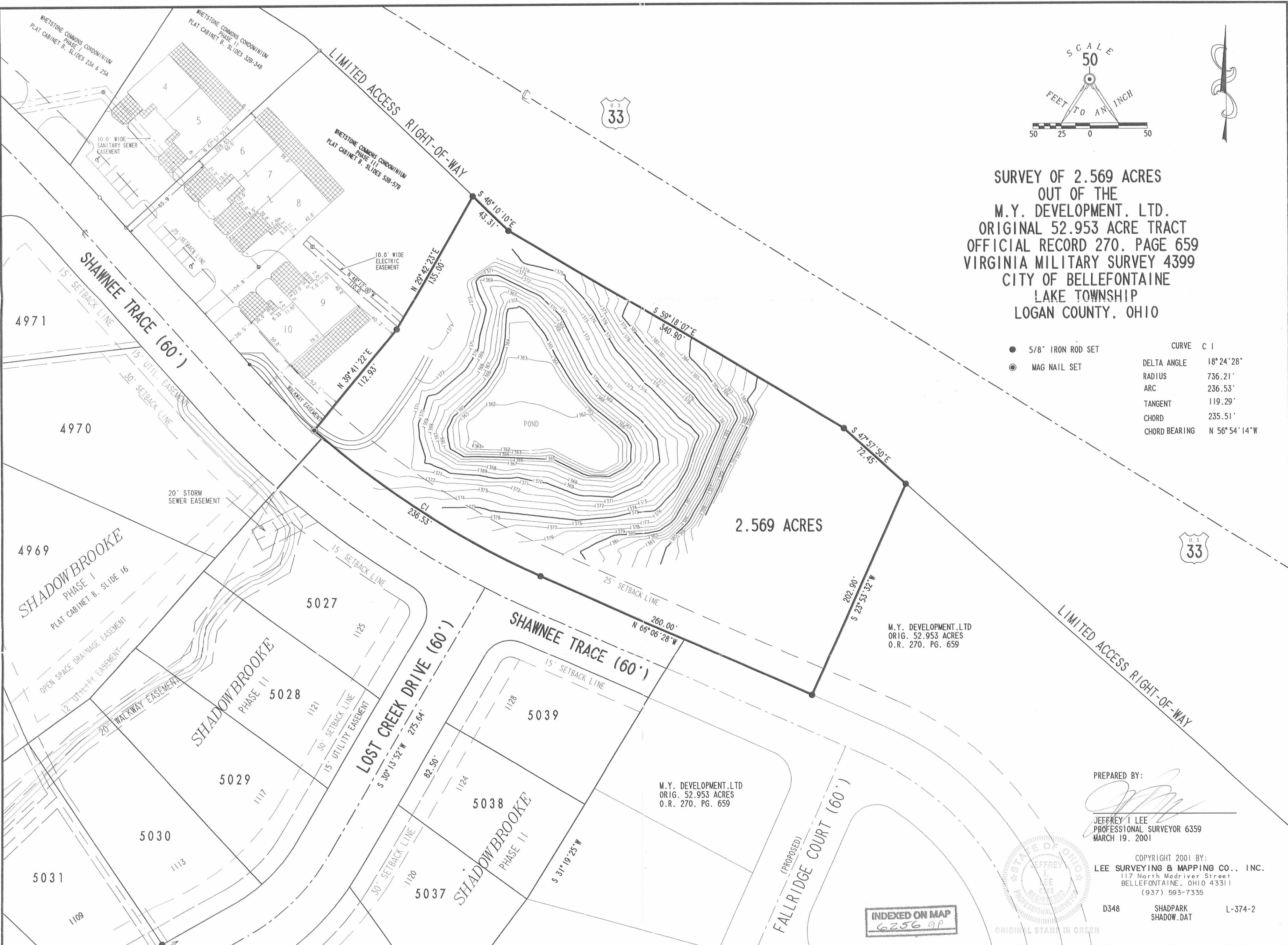
ORIGINAL STAMP IN GREEN

L-374



SURVEY OF 2.569 ACRES
OUT OF THE
M.Y. DEVELOPMENT, LTD.
ORIGINAL 52.953 ACRE TRACT
OFFICIAL RECORD 270, PAGE 659
VIRGINIA MILITARY SURVEY 4399
CITY OF BELLEFONTAINE
LAKE TOWNSHIP
LOGAN COUNTY, OHIO

● 5/8" IRON ROD SET	CURVE C 1
⊙ MAG NAIL SET	DELTA ANGLE 18°24'28"
	RADIUS 736.21'
	ARC 236.53'
	TANGENT 119.29'
	CHORD 235.51'
	CHORD BEARING N 56°54'14"W



INDEXED ON MAP
6256 9P



PREPARED BY:
Jeffrey I. Lee
JEFFREY I. LEE
PROFESSIONAL SURVEYOR 6359
MARCH 19, 2001

COPYRIGHT 2001 BY:
LEE SURVEYING & MAPPING CO., INC.
117 North Madriver Street
BELLEFONTAINE, OHIO 43311
(937) 593-7335

D348 SHADPARK SHADOW.DAT L-374-2

Brown Avenue (T.R. 183)
Easement Description

Situated in the State of Ohio, County of Logan and Township of Lake, being a part of V.M.S. 4399 and 3683 and being a portion of the easements for highway purposes acquired by the State of Ohio as parcel 8A, a 0.840 acre easement acquired from Thelma Traul and recorded in D. B. Volume 306, Page 242; parcel 49, a 0.170 acre easement acquired from Mary Cedal Braden and recorded in D.B. Vol. 304, Page 419 and parcel 51, a 0.450 acre easement acquired from Charles E. & Elizabeth Whitney and recorded in D.B. Vol. 304, Page 624, of project Logan 33-10.85 (II) and more particularly described as follows:

Beginning for reference at a concrete monument found in V.M.S. 4399 in the Corporation line of the City of Bellefontaine at the northwest corner of said parcel 8A, said Traul lands now being in the name of David A. Younkman, etal. and being a 54.541 acre tract recorded in D. B. Volume 390, Page 998;

Thence with said easement line and Corporation line S. 41°-48'-22"E. 10.00 feet to a 5/8" iron bar set at the true point of beginning of this description;

Thence N.48°-11'-38"E. (this bearing is assumed and all other bearings and distances are as measured as a part of this survey) 273.62 feet to a 5/8" iron bar set;

Thence with a 331.57 foot radius curve to the right having a central angle of 16°-56'-53", an arc length of 98.07 feet and a chord bearing N.56°-40'-04"E. 97.72 feet to a 5/8" iron bar set;

Thence N.65°-08'-31"E. 80.17 feet to a 5/8" iron bar set in the east line of said easement and the west line of the existing U.S.R. 33 limited access line and passing into V.M.S. 3683 at 8.53 feet;

Thence with said west limited access line S.41°-51'-11"E. 46.55 feet to a 5/8" iron bar set on the existing centerline of T.R. 183 at the northeast corner of said 0.170 acre tract, said Braden lands now being in the name of The First Church of God, Inc. and being a 6.180 acre tract recorded in D. B. Vol. 326, Page 491, and passing a 5/8" iron bar found on the relocated centerline of said T. R. 183, at 31.37 feet;

Thence continuing with said west limited access line S.41°-51'-11"E. 18.03 feet to a 5/8" iron bar set;

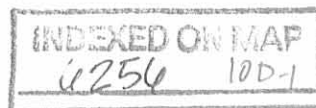
Thence with a 25.00 foot radius curve to the left having a central angle of 21°-40'-35", an arc length of 9.46 feet and a chord bearing S.75°-58'-49"W. 9.40 feet to a 5/8" iron bar set;

Thence S.65°-08'-31"W. 89.81 feet to a 5/8" iron bar set;

Thence with a 271.57 foot radius curve to the left having a central angle of 16°-56'-53", an arc length of 80.33 feet and a chord bearing S.56°-40'-04"W. 80.03 feet to a 5/8" iron bar set, passing a 5/8" iron bar set in the east line of V.M.S. 4399 at 15.91 feet, said bar also being in the east line of said 0.450 acre tract, said Whitney lands within said parcel 51 having since been dedicated to the public for right-of-way purposes as shown on the Final Plat of Brookwood No. 8 as recorded in Plat Cabinet A, Slide No. 619 & 621;

Thence S.48°-11'-38"W. 83.78 feet to a 5/8" iron bar set;

Thence with a 25 foot radius curve to the left having a



central angle of $76^{\circ}-13'-25''$, an arc length of 33.26 feet and a chord bearing $S.10^{\circ}-04'-56''W.$ 30.86 feet to a $5/8''$ iron bar set;

Thence with a 517.97 foot radius curve to the right having a central angle of $1^{\circ}-59'-37''$, an arc length of 18.02 feet and a chord bearing $S.27^{\circ}-01'-58''E.$ 18.02 feet to a $5/8''$ iron bar set at the northwest corner of lot # 4450 of said Brookwood #8 at the northeast right-of-way corner of Oakwood Drive and in a Corporation line of the City of Bellefontaine;

Thence with said Corporation and right-of-way line $S.57^{\circ}-32'-00''W.$ 61.12 feet to a $5/8''$ iron bar set at the northeast corner of lot # 4449 of said Brookwood #8;

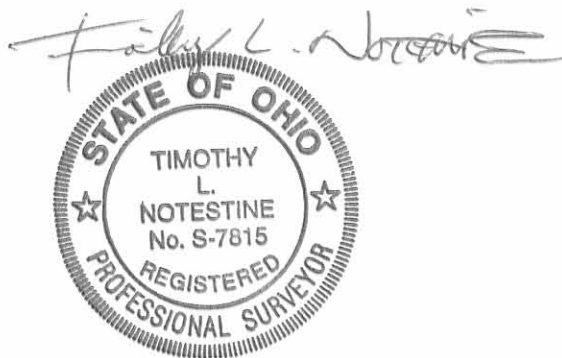
Thence with a 25 foot radius curve to the left having a central angle of $93^{\circ}-33'-47''$, an arc length of 40.82 feet and a chord bearing $N.85^{\circ}-01'-28''W.$ 36.44 feet to a $5/8''$ iron bar set;

Thence $S.48^{\circ}-11'-38''W.$ 75.70 feet to a $5/8''$ iron bar set in the west line of said 0.450 acre tract at an angle point in the north line of said lot #4449;

Thence with the west line of said 0.450 acre tract and a Corporation line of the City of Bellefontaine, $N.41^{\circ}-48'-22''W.$ 60.00 feet to the place of beginning, passing a $5/8''$ iron bar set on the existing centerline of T. R. 183 at 22.90 feet and a pk nail found on the relocated centerline of T. R. 183 at 30.00 feet.

Containing 0.675 acres more or less of which 0.347 acres are a portion of said 0.840 acre easement (parcel 8A), 0.076 acres are a portion of said 0.170 acre easement (parcel 49), and 0.252 acres are a portion of said 0.450 acre easement (parcel 51). 0.547 acres more or less are in V.M.S. 4399 and 0.128 acres are in V.M.S. 3683.

This description prepared by Timothy L. Notestine, P.E., P.S., #S-7815 from an actual field survey performed December 12, 1997.



INDEXED ON MAP
6256 10D-2

Received 5-1-98 OK JCH

BROWN AVENUE (T. R. 183)

PROPERTY DESCRIPTION

Situated in the State of Ohio, County of Logan and Township of Lake, being part of V.M.S. 3683 and being a portion of the land acquired by the State of Ohio as parcel 8 WL, a 24.200 acre tract acquired from Thelma Traul and recorded in D. B. Vol. 306, Page 237 and parcel 49 WL, a 4.820 acre tract acquired from May Cedel Braden and recorded in D. B. Vol. 304, Page 415 of project Logan 33-10.85(II) as limited access and more particularly described as follows:

Beginning at a 5/8" iron bar found on the relocated centerline of T. R. 183 in the west limited access line of U.S.R. 33 and in the east line of parcel 8A, a 0.840 acre easement acquired from Thelma Traul for said ODOT project and recorded in D.B. Vol. 306, Page 242, said Traul lands now being in the name of David A. Younkman, etal. and being a 54.541 acre tract recorded in D.B. Volume 390, Page 998;

Thence with said limited access line N.41°-51'-11"W. 31.37 feet to a 5/8" iron bar set;

Thence N.65°-08'-31"E. (this bearing is assumed and all other bearings and distances are as measured as a part of this survey) 9.64 feet to a 5/8" iron bar set;

Thence with a 25 foot radius curve to the left having a central angle of 42°-50'-00", an arc length of 18.69 feet and a chord bearing N.43°-43'-31"E. 18.26 feet to a 5/8" iron bar set;

Thence with a 50 foot radius curve to the right having a central angle of 243°-14'-00" an arc length of 212.26 feet a chord bearing S.36°-04'-30"E. 85.16 feet to a 5/8" iron bar set in the existing limited access of U.S.R. 33 and Corporation line of the City of Bellefontaine and passing 5/8" iron bars set at 115.92 feet on the relocated centerline of T. R. 183 and at 165.90 feet on the existing centerline of T.R. 183 which is the southern boundary of said 24.200 acre tract, and said centerline is the northern boundary of said 4.820 acre tract;

Thence with said limited access line, Corporation line and the north line of a 6.180 acre tract in the name of The First Church of God, Inc. and recorded in D. B. Vol. 326, Page 491, S.85°-32'-31"W. 23.73 feet to a 5/8" iron bar set in the west limited access line and at the southeast corner of parcel 49, a 0.170 acre easement acquired from Mary Cedal Braden and recorded in D.B. Vol. 304, Page 419, said Braden lands now being said First Church of God tract;

Thence with said west limited access line N.41°-51'-11"W. 40.35 feet to the place of beginning, passing a 5/8" iron bar set at 7.14 feet, and passing a 5/8" iron bar set at 25.17 feet on the existing centerline of T. R. 183;

Containing 0.189 acres more or less of which 0.162 acres are out of said 24.200 acre tract (parcel 8 WL) and 0.027 acres are out of said 4.820 acre tract (parcel 49 WL).

This description prepared by Timothy L. Notestine, P.E., P.S., #S-7815 from an actual field survey performed December 12, 1997.

Timothy L. Notestine



PLANNED ON MAP
6256 10 D-3

BROWN AVENUE UTILITY EASEMENT DESCRIPTION

Situated in the State of Ohio, County of Logan and Township of Lake, being located in V.M.S. 3683 and 4399 and being a portion of the easements acquired by the State of Ohio as parcel 49, a 0.170 acre easement acquired from Mary Cedal Braden and recorded in D.B. Vol. 304, Page 419 and parcel 51, a 0.450 acre easement acquired from Charles E. and Elizabeth Whitney and recorded in D.B. Vol. 304, Page 624, of project Logan 33-10.85(II) and more particularly described as follows:

Beginning for reference in V.M.S. 4399 at a 5/8" iron bar set at the northwest corner of lot #4450 as shown on the Final Plat of Brookwood No.8 as recorded in Plat Cabinet A, Slide No. 619 and 621, in the north right-of-way line of Oakwood Drive said bar being in a Corporation line of the City of Bellefontaine;

Thence with the proposed right-of-way of Oakwood Drive and Brown Avenue and a 517.97 foot radius curve to the left having a central angle of 1°-59'-37", an arc length of 18.02 feet and a chord bearing N.27°-01'-58"W. 18.02 feet to a 5/8" iron bar set;

Thence continuing with said proposed right-of-way and a 25 foot radius curve to the right having a central angle of 9°-48'-06", an arc length of 4.28 feet and chord bearing N.23°-07'-44"W. 4.27 feet to a point said point being the true place of beginning for this description;

Thence continuing with said proposed right-of-way and said 25 foot radius curve to the right having a central angle of 66°-25'-19", an arc length of 28.98 feet and a chord bearing N.11°-58'-58"E. 27.39 feet to a 5/8" iron bar set;

Thence continuing with said proposed right-of-way N.48°-11'-38"E. (this bearing is assumed and all other bearings and distances are as measured as a part of this survey) 83.78 feet to a 5/8" iron bar set;

Thence continuing with said proposed right-of-way and a 271.57 foot radius curve to the right having a central angle of 13°-35'-31", an arc length of 64.42 feet and a chord bearing N.54°-59'-23"E. 64.27 feet to a 5/8" iron bar set in the west line of V.M.S. 3683 and said 0.170 acre tract, said Braden lands now being in the name of The First Church of God, Inc. and being a 6.180 acre tract recorded in D.B. Vol. 326, Page 491;

Thence radially to said preceding curve, into V.M.S. 3683, S.28°-12'-51"E. 15.00 feet to a point;

Thence with a 256.57 foot radius curve to the left having a central angle of 13°-35'-31", an arc length of 60.86 feet and a chord bearing S.54°-59'-23"W. 60.72 feet to a point and passing back into V.M.S. 4399 and 0.450 acre tract at 7.16 feet, said Whitney lands within said parcel 51 having since been dedicated to the public for right-of-way purposes by said Brookwood No.8;

Thence S.48°-11'-38"W. 106.69 feet to the place of beginning.

Containing 0.056 acres more or less of which 0.055 acres are in V.M.S. 4399 and a portion of said 0.450 acre easement (parcel 51) and 0.001 acres are in V.M.S. 3683 and a portion of said 0.170 acre easement (parcel 49).

This description prepared by Timothy L. Notestine, P.E., P.S., #S-7815 from an actual field survey performed December 12, 1997.

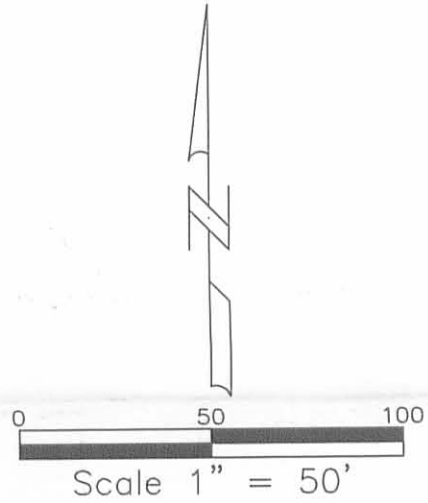
Timothy L. Notestine



INDEXED ON MAP
6256 10-D4

Brown Ave. (Twp. Rd. #183) Right of Way Survey

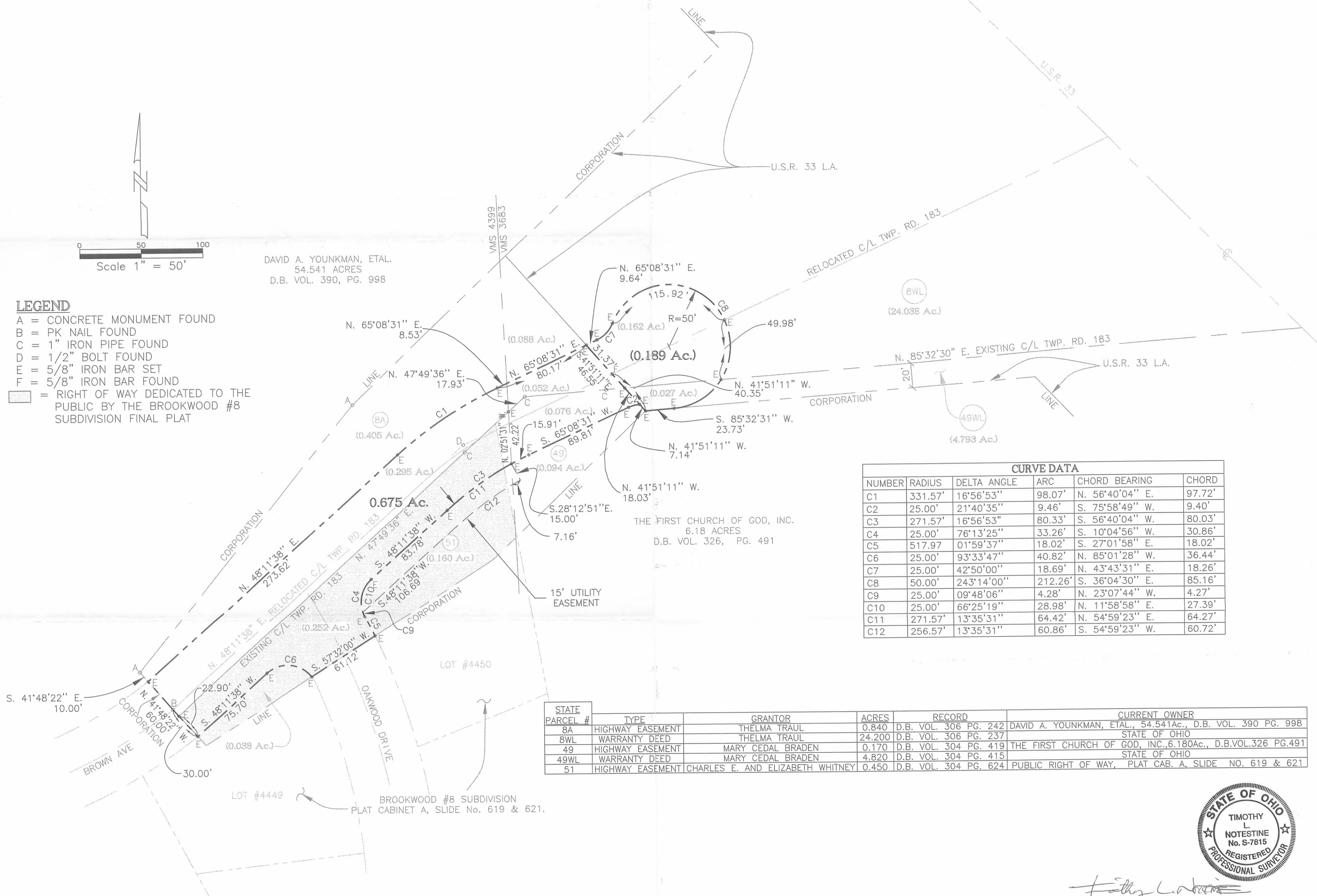
LAKE TOWNSHIP, LOGAN COUNTY, OHIO
V.M.S. 3683 & 4399



DAVID A. YOUNKMAN, ETAL.
54.541 ACRES
D.B. VOL. 390, PG. 998

LEGEND

- A = CONCRETE MONUMENT FOUND
- B = PK NAIL FOUND
- C = 1" IRON PIPE FOUND
- D = 1/2" BOLT FOUND
- E = 5/8" IRON BAR SET
- F = 5/8" IRON BAR FOUND
- = RIGHT OF WAY DEDICATED TO THE PUBLIC BY THE BROOKWOOD #8 SUBDIVISION FINAL PLAT



CURVE DATA					
NUMBER	RADIUS	DELTA ANGLE	ARC	CHORD BEARING	CHORD
C1	331.57'	16°56'53"	98.07'	N. 56°40'04" E.	97.72'
C2	25.00'	21°40'35"	9.46'	S. 75°58'49" W.	9.40'
C3	271.57'	16°56'53"	80.33'	S. 56°40'04" W.	80.03'
C4	25.00'	76°13'25"	33.26'	S. 10°04'56" W.	30.86'
C5	517.97'	01°59'37"	18.02'	S. 27°01'58" E.	18.02'
C6	25.00'	93°33'47"	40.82'	N. 85°01'28" W.	36.44'
C7	25.00'	42°50'00"	18.69'	N. 43°43'31" E.	18.26'
C8	50.00'	243°14'00"	212.26'	S. 36°04'30" E.	85.16'
C9	25.00'	09°48'06"	4.28'	N. 23°07'44" W.	4.27'
C10	25.00'	66°25'19"	28.98'	N. 11°58'58" E.	27.39'
C11	271.57'	13°35'31"	64.42'	N. 54°59'23" E.	64.27'
C12	256.57'	13°35'31"	60.86'	S. 54°59'23" W.	60.72'

STATE PARCEL #	TYPE	GRANTOR	ACRES	RECORD	CURRENT OWNER
8A	HIGHWAY EASEMENT	THELMA TRAU	0.840	D.B. VOL. 306 PG. 242	DAVID A. YOUNKMAN, ETAL., 54.541Ac., D.B. VOL. 390 PG. 998
8WL	WARRANTY DEED	THELMA TRAU	24.200	D.B. VOL. 306 PG. 237	STATE OF OHIO
49	HIGHWAY EASEMENT	MARY CEDAL BRADEN	0.170	D.B. VOL. 304 PG. 419	THE FIRST CHURCH OF GOD, INC., 6.180Ac., D.B. VOL. 326 PG. 491
49WL	WARRANTY DEED	MARY CEDAL BRADEN	4.820	D.B. VOL. 304 PG. 415	STATE OF OHIO
51	HIGHWAY EASEMENT	CHARLES E. AND ELIZABETH WHITNEY	0.450	D.B. VOL. 304 PG. 624	PUBLIC RIGHT OF WAY, PLAT CAB. A, SLIDE NO. 619 & 621



Timothy L. Notestine
TIMOTHY L. NOTESTINE P.E., P.S. #S-7815
135 N. DETROIT ST.
BELLEFONTAINE, OHIO 43311
SURVEY DATE: DEC. 12, 1997

INDEXED ON MAP
0256 10-P