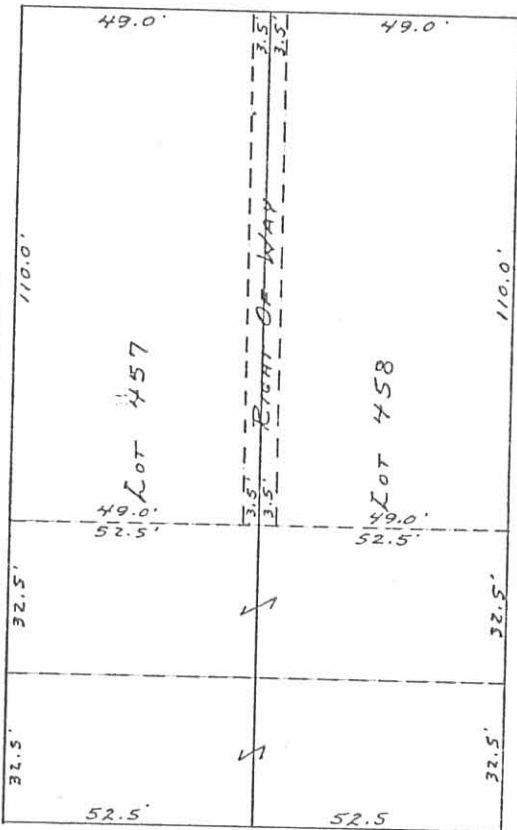


AUBURN

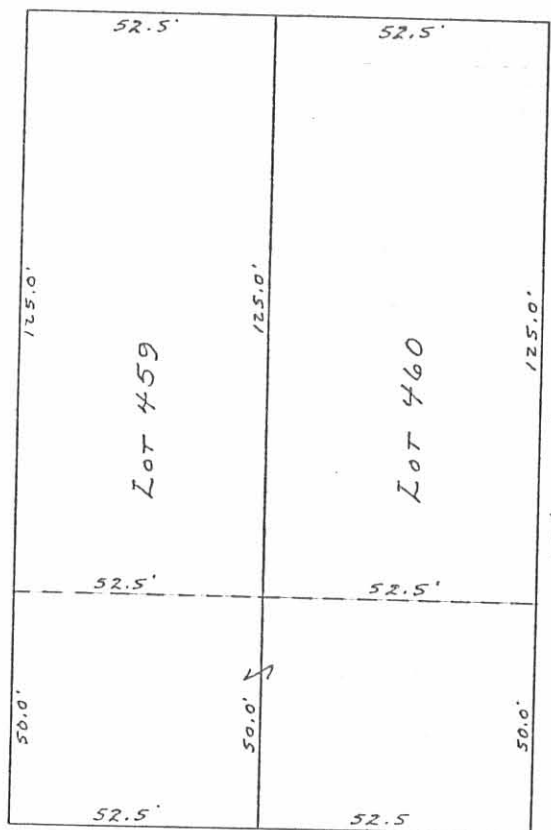
AVE. - 60'

10' ALLEY



16.5' ALLEY

PARK ST. - 30'



16.5' ALLEY

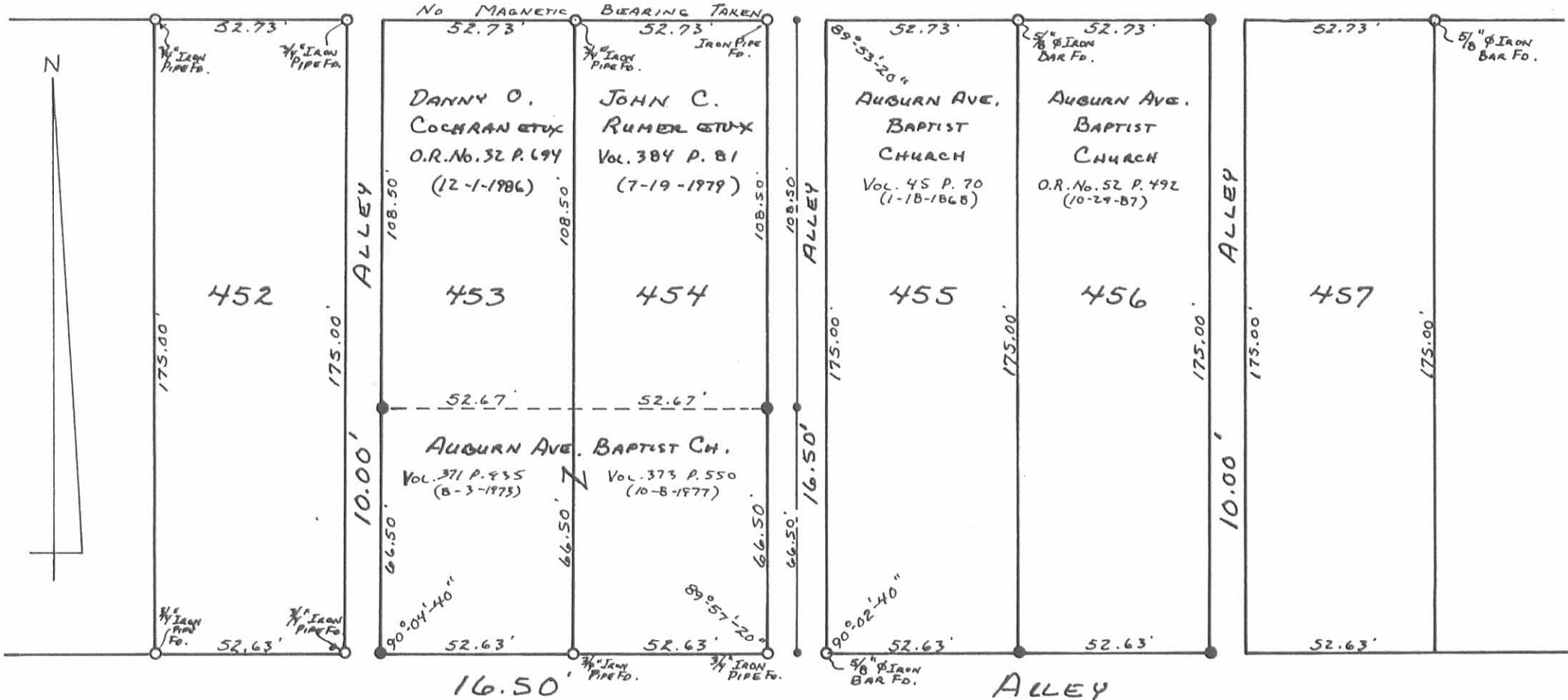
10' ALLEY

6328 IP

INDEXED ON MAP

SCALE: 1" = 40'

# AUBURN MAP ROOM AVE. - 60'



- - P.K. NAILS IN ALLEY.
- - 5/8" X 30" REBARS SET.

*Daniel E. Gilbert*  
**DANIEL E. GILBERT, P.S.**  
 REG. SUR. NO. 5402  
 400 N. PARK ST.  
 BELLEFONTAINE, OHIO  
 43311



INDEXED ON MAP  
6328 2P

AUBURN AVE. CHURCH  
 PROPERTIES  
 LOTS 453 Pt., 454 Pt., 455 AND 456  
 CITY OF BELLEFONTAINE  
 LAKE TOWNSHIP  
 LOGAN COUNTY, OHIO  
 OCTOBER 5, 1988

SCALE: 1" = 40'

088-084

LOT 455  
 AUBURN AVE BAPTIST CHURCH

See BK 14 pg 36

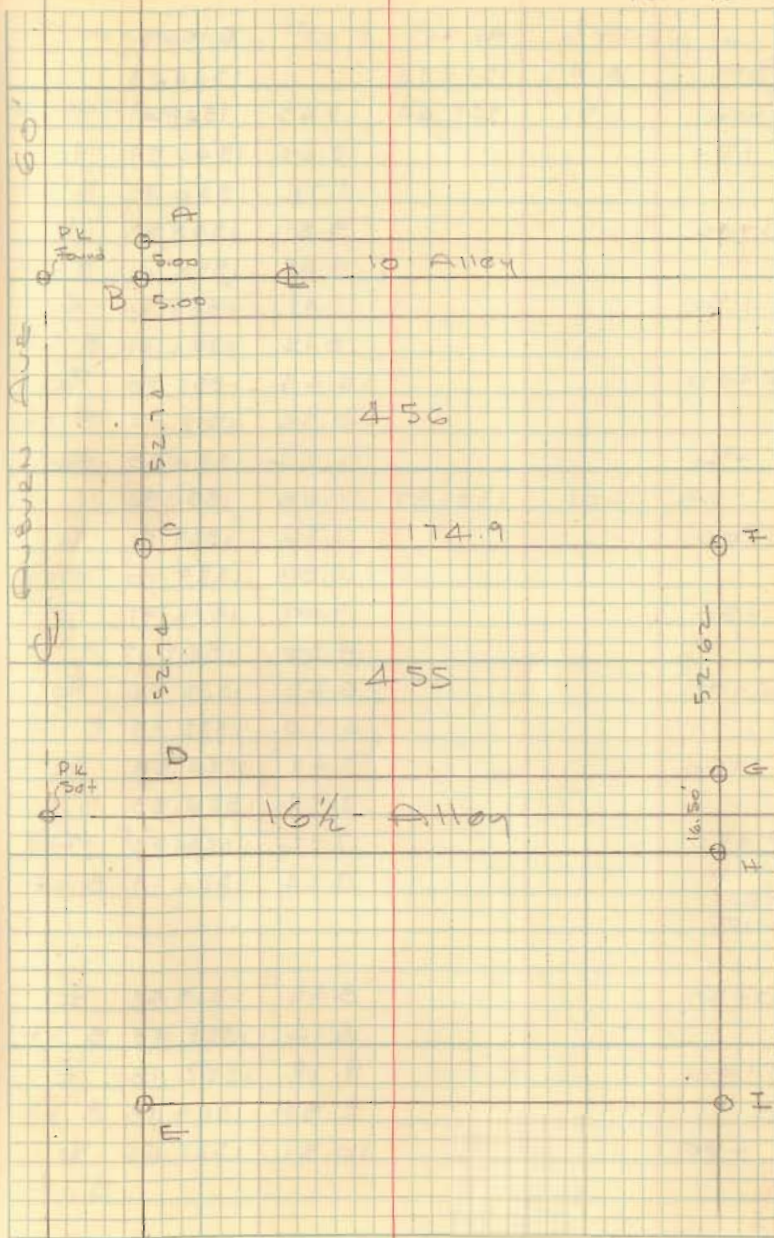
- A =  $\frac{3}{8}$ "  $\phi$  Bar Found
- B = " " "
- C = " " Set
- D = Unseled + on Long walk
- E =  $\frac{3}{4}$ " pipe found (city FB 270/13)
- F =  $\frac{3}{8}$ "  $\phi$  Bar Set
- G = " " "
- H =  $\frac{3}{4}$ " pipe found BK 270/13
- I =  $\frac{1}{2}$ " " " "

Lots Orig  $52\frac{1}{2} \times 175$

INDEXED ON MAP  
 6328

Dodson  
 Art's

6/20/67 59  
 Rain 75°



36

PART LOT 457  
 BELLEFONTAINE, Ohio  
 Plot Bk A Vol. 1 Pg. 6.

- A = Mon. found @ E Auburn & Park
- B = 2' x 10' Iron found @ Auburn & Madriver
- C = Mon found @ E Park & Patterson

on	From	To	Plot	meas	
Auburn	Park	Madriver	501.50	503.45	+1.95
Park	Auburn	Patterson	426.50	426.50	OK

Used Procrated distances as shown  
 in City Eng. Bk # W-2

125.24  
 118.49  
 243.73

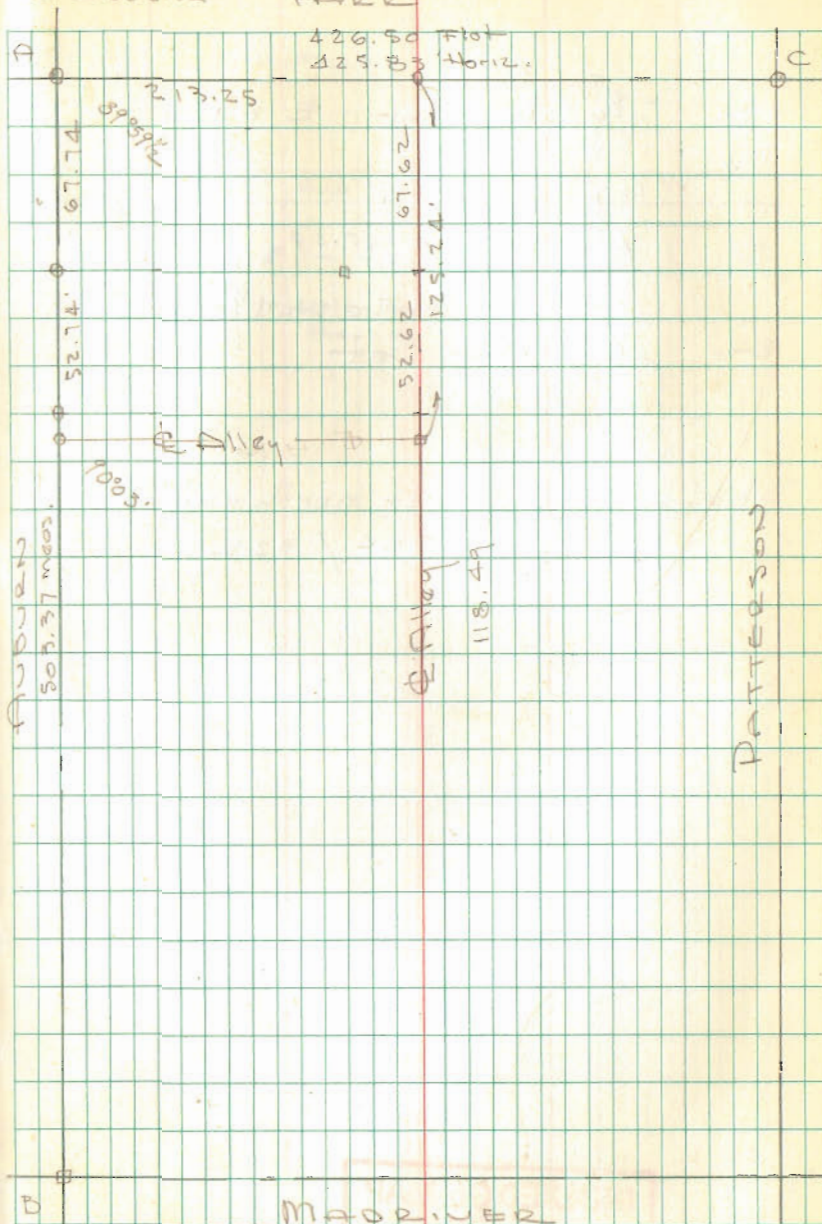
52.62  
 8.25  
 60.87  
 43.73  
 17.14

INDEXED ON MAP  
 6328

10-12-65

36

Dodson  
 L. Geeslin  
 Park



MADRIVER

PT. Lot 457 Cont'd.

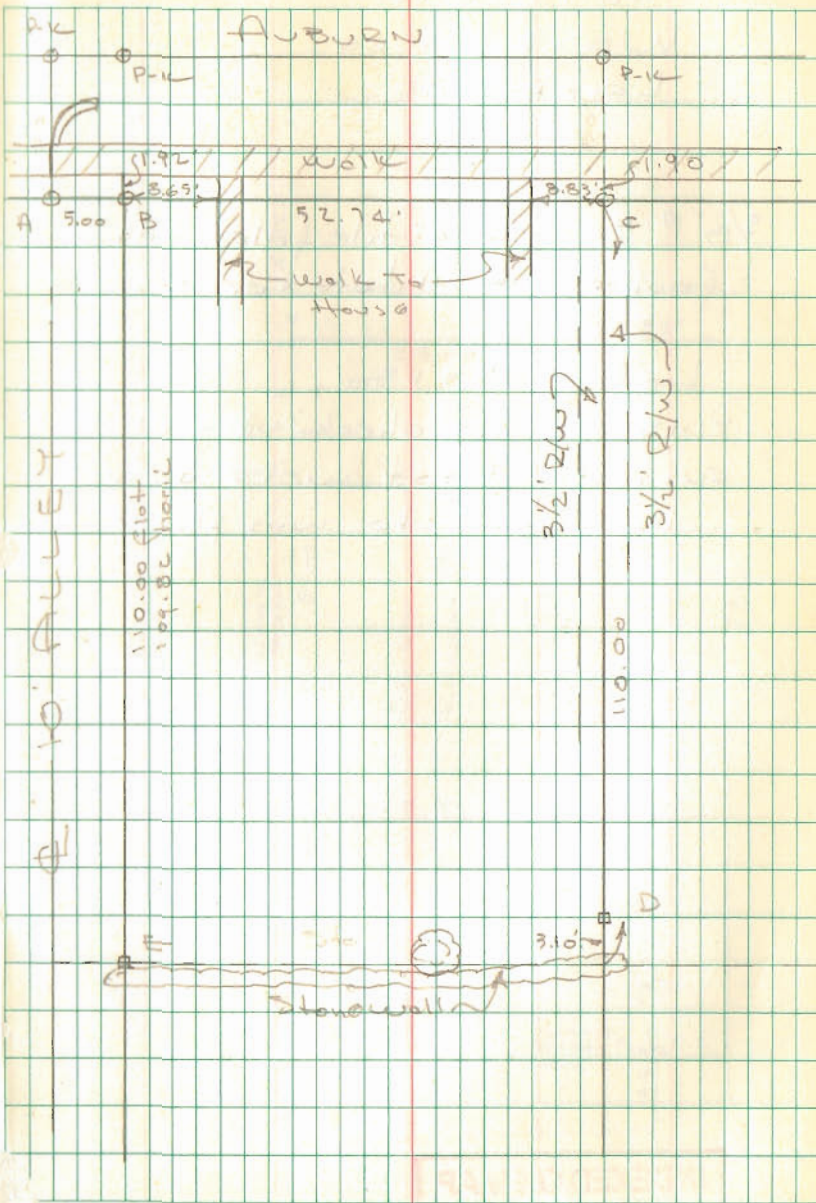
- A = 1/2"  $\phi$  Bar Set - E Alley
- B = " " "
- C = " " "
- D = 1/2"  $\phi$  Bar Set - 3.10' Not  
Cor. - Stone wall @ cor.
- E = 1/2"  $\phi$  Bar Set

Shofer - 110' off north end  
Vol. 284 / 322

INDEXED ON MAP  
6328

Dodson  
Geolin

10-12-65 37



18

LOT 481

BELLEFONTAINE

- PARK ST

0+00 MON @ AUBURN & PARK  
 2+12.92 P-K NAIL FOUND @ ALLEY  
 4+26.00 MON @ PARK & PATTERSON ST.

PATTERSON ST.

0+00 MON. @ PATTERSON & PARK  
 2+22.7 @ N.H.  
 5+01.30 MON @ MADRIVER

AUBURN AVE

0+00 MON @ AUBURN & PARK  
 0+67.74 P-K NAIL FOUND @  
 1+20.44 " " "  
 1+25.44 " " "  
 2+44.57 NAIL FOUND @ ALLEY  
 5+03.25 " O" BOLT FOUND @ MADRIVER ST.

MADRIVER ST.

0+00 " O" BOLT @ AUBURN & MADRIVER  
 4+26.00 MON @ PATTERSON

See F.B. 14 pg. 36

INDEXED ON MAP  
 6328

Dotson  
Nichols

6-7-69

23

