

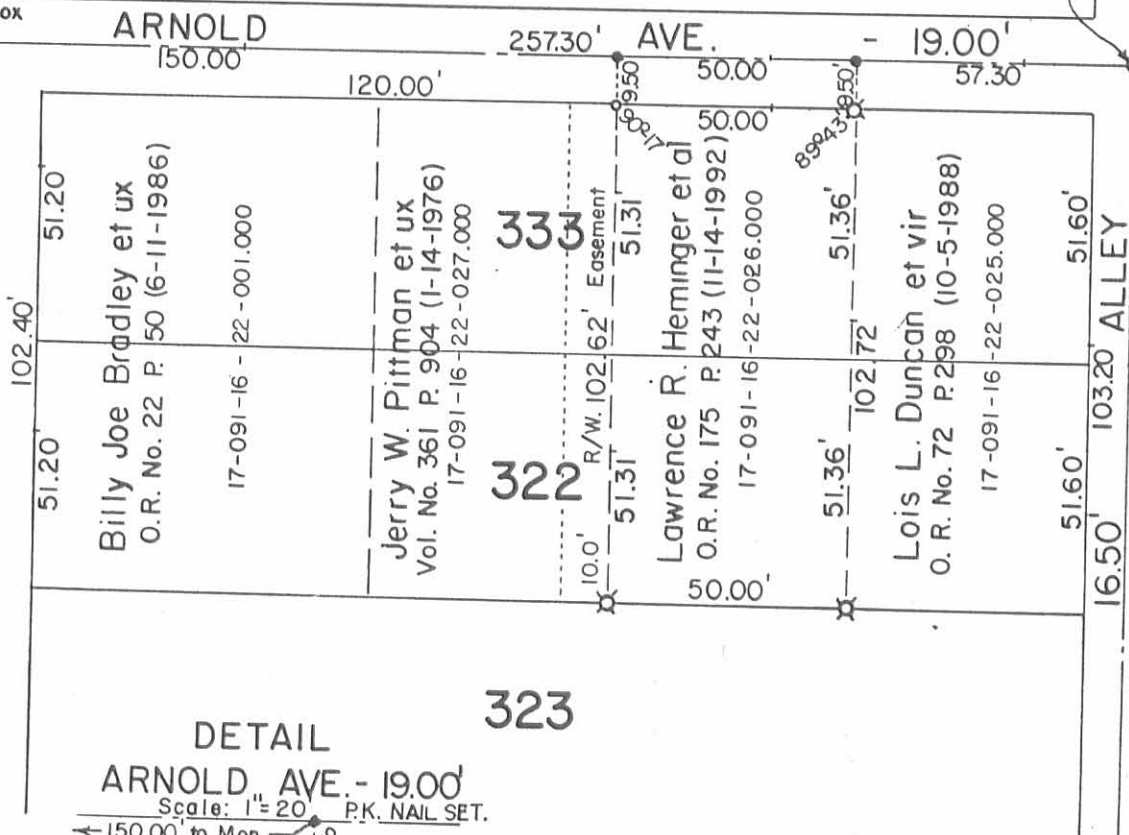
MAP ROOM

3" Cast Iron Mon. Fd. Mon. Box

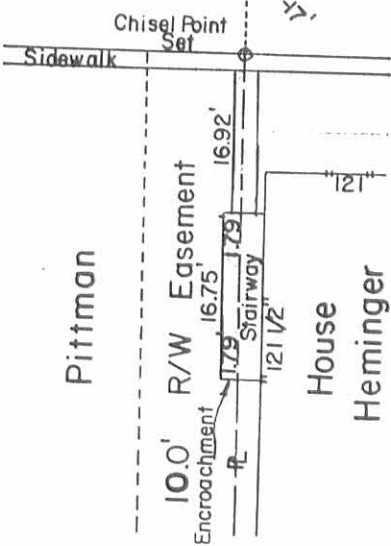
1" Iron Bolt Fd. (Bent). Replaced with a 5/8" x 30" Rebar.

South Detroit St. - 60'

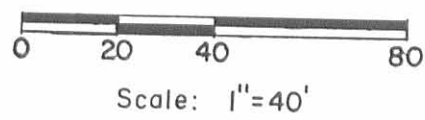
ARNOLD AVE.



DETAIL
 323
 ARNOLD AVE. - 19.00'
 Scale: 1" = 20' P.K. NAIL SET.
 ← 150.00' to Mon.



- SYMBOLS:
- - P. K. Nails Set. (Street).
 - - Chisel Point Set. (Sidewalk).
 - ⊗ - 5/8" x 30" Rebars Set.



Daniel E. Gilbert
 DANIEL E. GILBERT, P.S.
 REG. SUR. NO. 5402
 400 N. PARK ST.
 BELLEFONTAINE, OHIO 43311
 TELEPHONE: 1 (513) 593-1428



HEMINGER SURVEY
 Part of Lots No. 322-333
 City of Bellefontaine
 Lake Township
 Logan County, Ohio
 March 30, 1993

INDEXED ON MAP
 6504 1P

093-015

City Ord. 187
Conda Keller (Smith) Survey Aug 11th 1917

O=hub, stake & tack Resurvey 11th 16th "
r=Remeasured

(1) Start at Mon Water & Det. East on Water Ave.

r at 525.2' Mon Water Ave & Main St

r = 257.6' det O center line of alley

(2) set crossfoot on Water at 28' W of Mon Main St

(3) Start at Mon. Water & Main. Meas S. on Main St
at 284.3' det crossfoot cut Arnold Ave = cut turnout
r = 745. Mon. Main & Lincoln

(4) det crossfoot on Lincoln at 28' W of Mon. Main St.
at Detroit & Lincoln = Mon. Hyd. NW = 33.36
E. edge W. x walk W = 23.10; Wedge EX walk E 23.4

(5) Start at Mon Lincoln & Detroit. Meas. East

at 257.3' set O center of alley (267.33

r = 524.6 Mon Lincoln & Main

(6) Transit line on cut alley. Water to Lincoln as above

(7) Meas. Mon. Detroit & Lincoln. N. on Detroit

at 741.35' Mon Detroit & Water Ave

(8) Start at Mon. Water & Det. S. 286.5' cut Arnold Ave.

(9) Start at cut Main St & S. side Arnold Ave. W. on S. side Arnold

at 170.2' on fence NW & Steuberg & NE & Mahlon Kerr.

r = 215.2 NW & Kerr O. & NE & Marg Smith

259.2 NW & Marg Smith at center 1/2" alley

267.45 = O center of alley NW & S

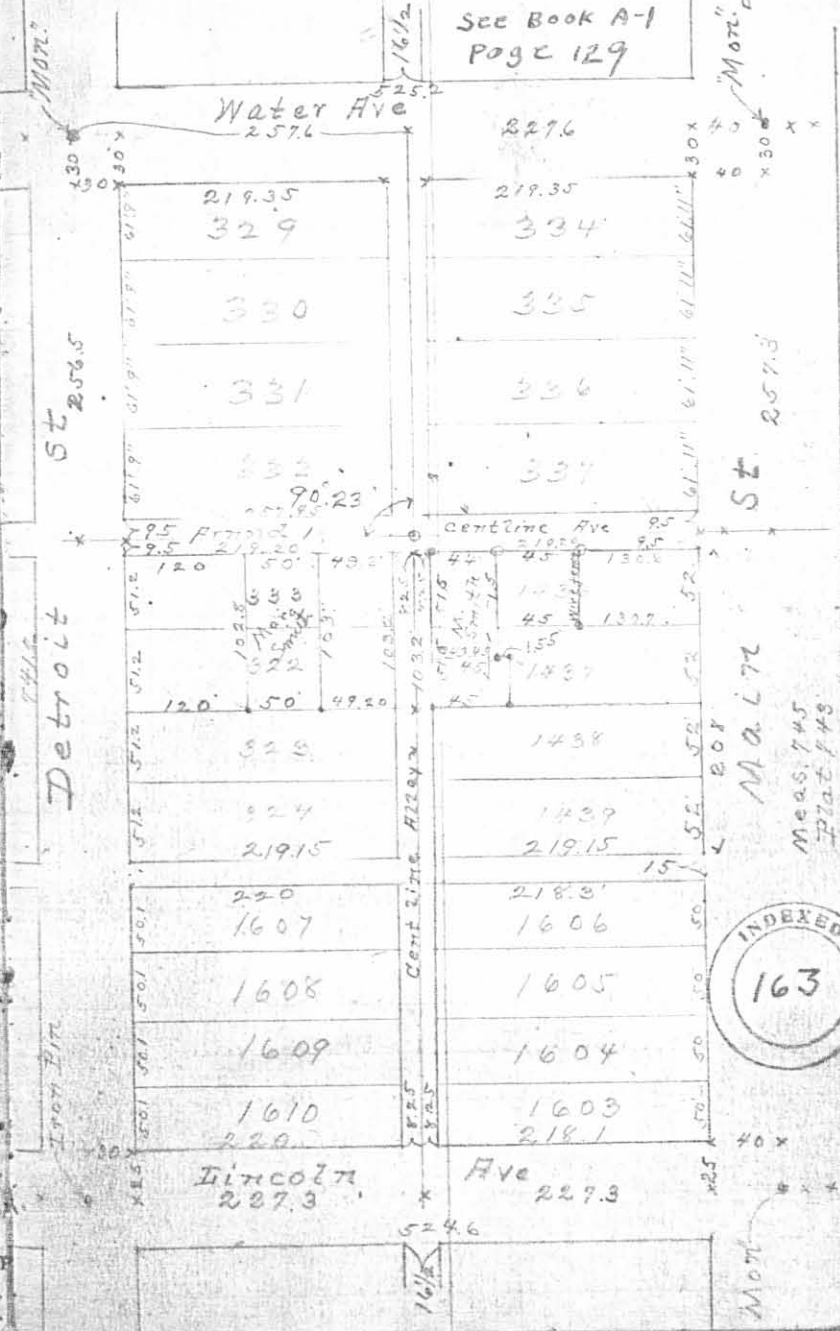
324.9 NE & Marg Smith in Lot 333.

374.9 SW & " " " " "

525.0 center Detroit street

Plat Conda Keller (Smith) Survey 87

SEE BOOK A-1
PAGE 129



6504 2P

INDEXED ON MAP

INDEXED
163

Meas. 745
Plat 873