

Ledrick

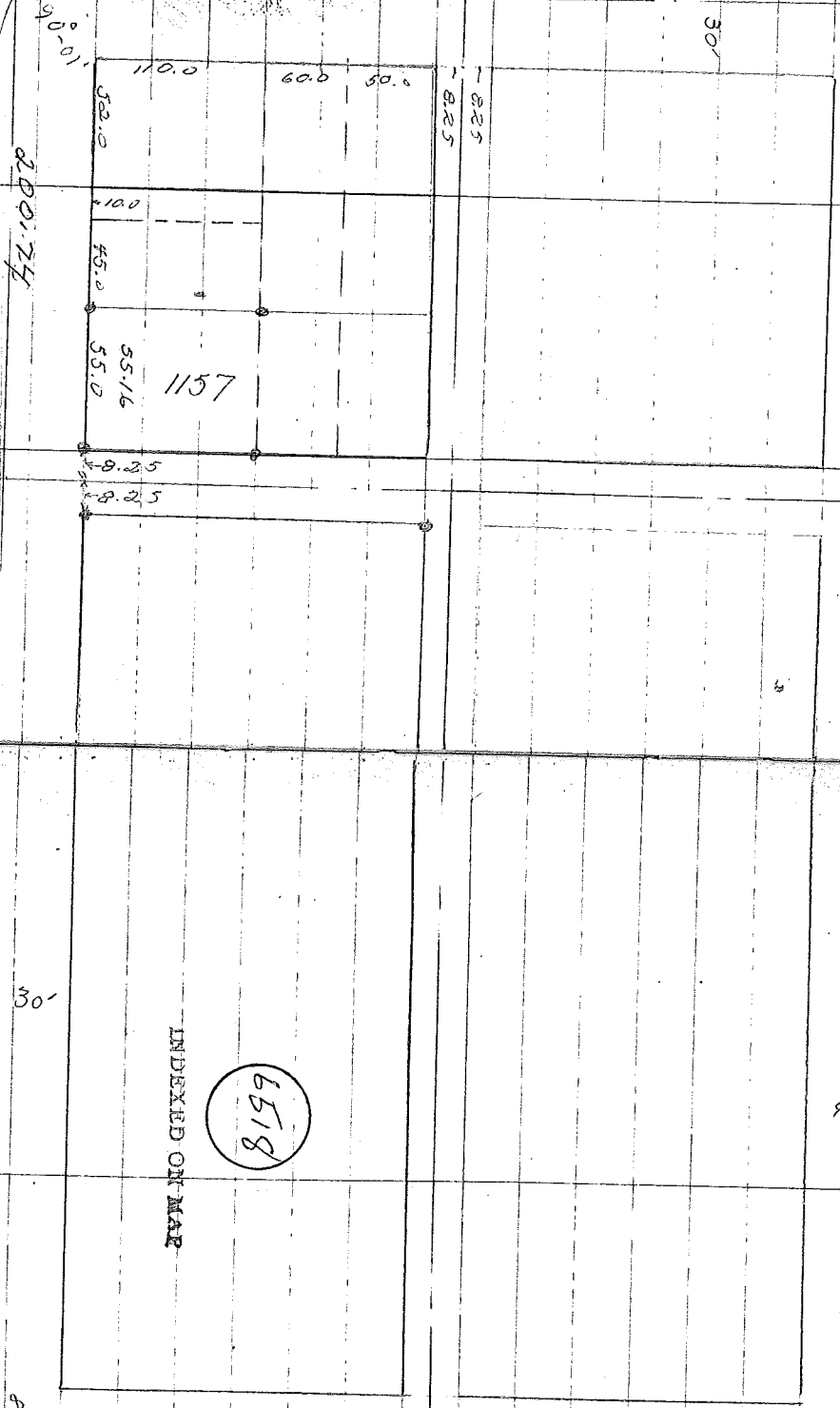
Palmer Add.

1963  
July

Main

58

528.9  
528.5 Plat Dist



529.0 Plat Dist  
529.5

202.85

200.74

0030 1049

K. Madras  
6400  
6416

Plat Dist

psr ft

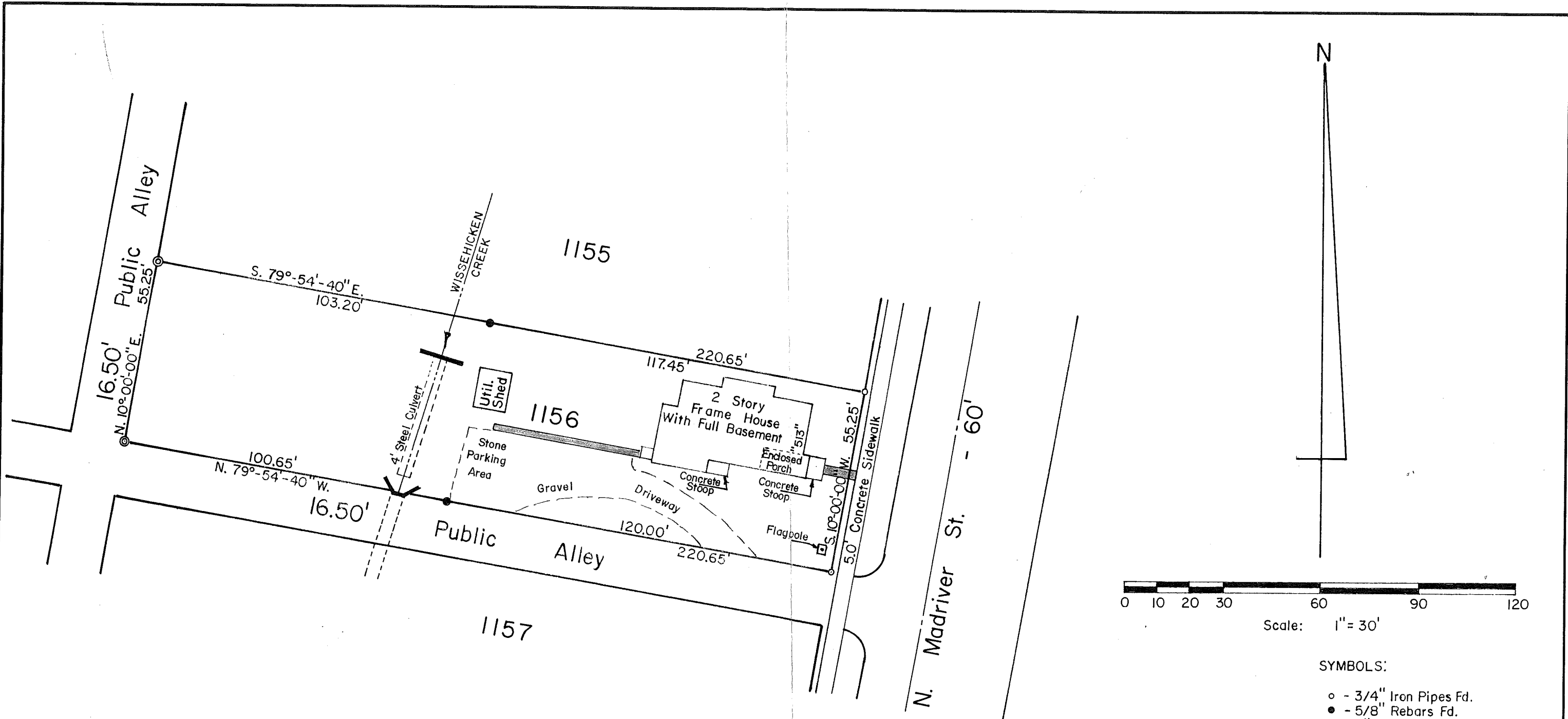
INDEXED ON MAP

6518

30'

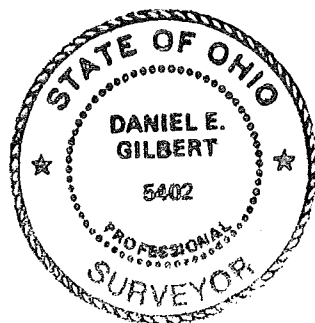
200.59

24



To Whom It May Concern:

I do hereby certify to UNITED MIDWEST SAVINGS BANK, that on July 5, 2002, I did personally locate the structures and other improvements as shown on the accompanying plat and there are no physical encroachments except those as shown.



*Daniel E. Gilbert*  
 DANIEL E. GILBERT, P.S.  
 REG. SUR. NO. 5402  
 513 N. MADRIVER ST  
 BELLEFONTAINE, OHIO 43311-2214  
 TELEPHONE: 1 (937) 593-1428

INDEXED ON MAP  
 6518 IP

GILBERT SURVEY - Lot No. 1156  
 City of Bellefontaine, Lake Township,  
 Logan County, Ohio.

SCALE: 1" = 30'	APPROVED BY:	DRAWN BY: DEG
DATE: 7-5-2002		REVISED:

*Daniel E. Gilbert, P.S.*  
 Daniel E. Gilbert, P.S.  
 Reg. Sur. No. 5402

DRAWING NUMBER  
 2002-015

8-25-2021

APPROVED

LEGEND:

● 5/8 INCH REBAR SET WITH YELLOW I.D. CAP STAMPED "DLS OHIO INC."

R/W = RIGHT-OF-WAY

C/L = CENTER-LINE

O.R. = OFFICIAL RECORD

PG. = PAGE

PALMERS ADDITION  
PLAT CABINET A, SLIDE 19

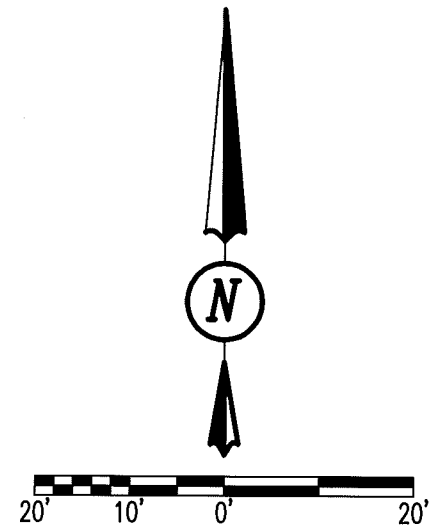
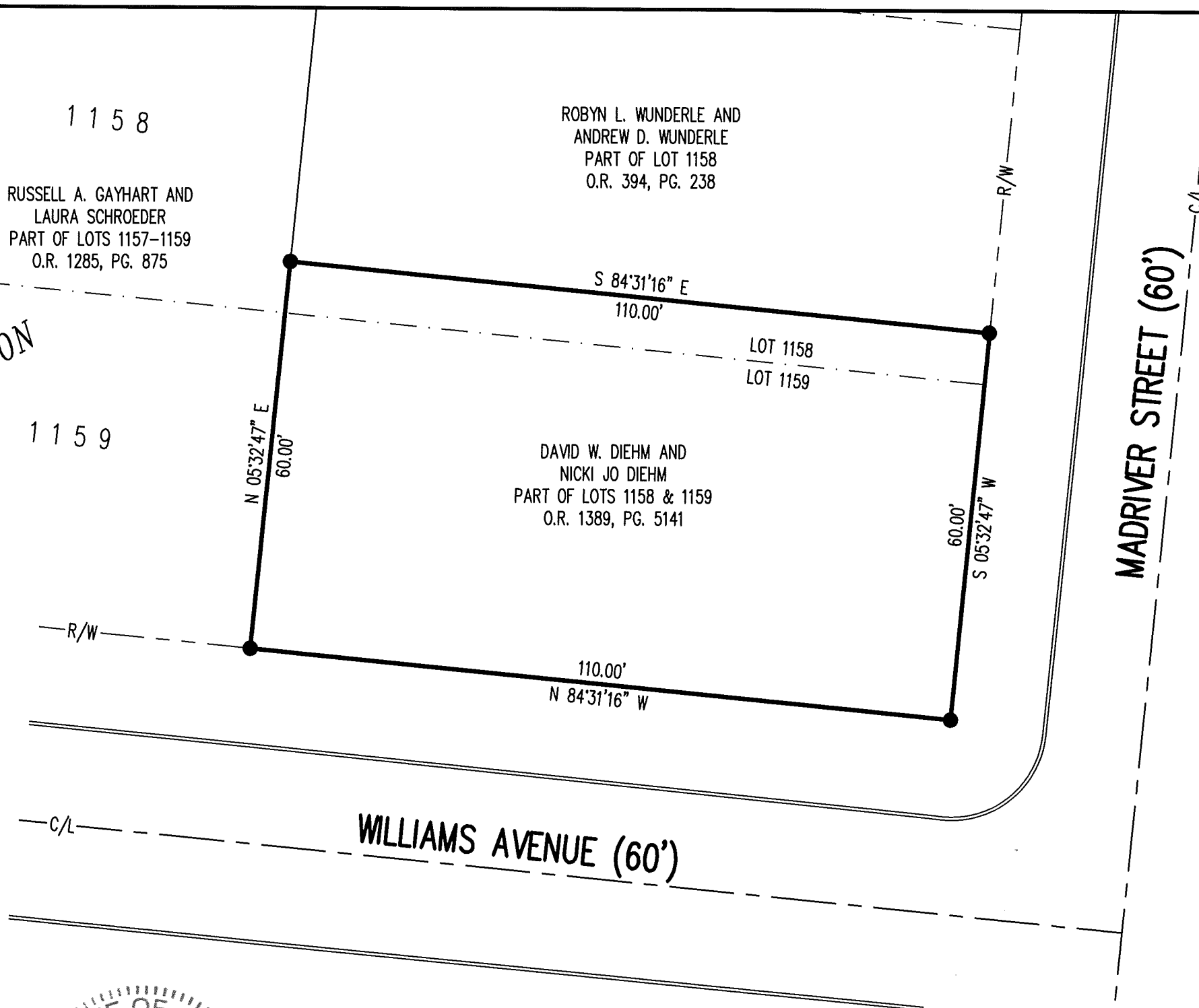
OCCUPATION NOTE:

NO EVIDENCE OF OCCUPATION ALONG BOUNDARY LINES UNLESS OTHERWISE SHOWN

BASIS FOR BEARINGS:

BEARINGS AND DISTANCES, SHOWN HEREON, ARE DERIVED FROM GPS OBSERVATIONS BASED ON GRID NORTH, OHIO STATE PLANE COORDINATE SYSTEM, NORTH ZONE, NAD83 (2011, EPOCH 2010), WITH THE NORTH RIGHT-OF-WAY LINE OF WILLIAMS AVENUE, HAVING A BEARING OF N 84°31'16" W.

THIS SURVEY WAS PREPARED IN THE ABSENCE OF A COMPLETE AND ACCURATE TITLE SEARCH AND DOES NOT GUARANTEE TITLE.



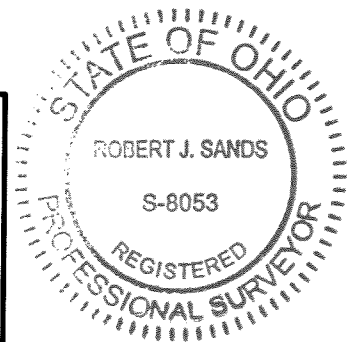
SCALE: 1" = 20'  
DISTANCES SHOWN HEREON ARE IN U.S. SURVEY FEET

**BOUNDARY SURVEY**  
PART OF LOTS 1158 AND 1159  
PALMERS ADDITION  
PLAT CABINET A, SLIDE 19  
CITY OF BELLEFONTAINE  
LAKE TOWNSHIP  
LOGAN COUNTY, OHIO

COPYRIGHT 2021 BY:



117 N. Madriver Street • Bellefontaine, OH 43311  
(937) 593-7335 • www.dlz.com  
Project #2121-2117.00



*Robert J. Sands* 08/20/21

ROBERT J. SANDS  
PROFESSIONAL SURVEYOR NO. 8053  
AUGUST, 2021

DEED & SURVEY REFERENCES:

REFERENCE DEEDS ARE SHOWN HEREON.

LOGAN COUNTY ENGINEER'S MAP ROOM  
FILES: 6518, 5521, 2194

DRAWN BY:	DESCRIPTION	REV. NO.	DATE
KSS			8/16/2021

INDEXED ON MAP  
6518