



REC'D 1-6-99 SWM OK ✓

Lee Surveying and Mapping Co., Inc.



Land Surveys • Topography • Subdivisions • Construction Layout

117 N. Madriver Street
Bellefontaine OH 43311

Phone: (937) 593-7335
Fax: (937) 593-7444

HUBER 0.035 ACRE

Lying in the City of Bellefontaine, Lake Township, Logan County, Ohio

Being the Wolfheim's Inc., an Ohio Corporation tract out of Lots 109 and 110 as deeded and described in Official Record 375, Page 906 of the Logan County Records of Deeds and being more particularly described as follows:

Beginning at a point at the southwest corner of Lot 109 and the north line of Columbus Avenue (80 feet wide).

THENCE, with the south line of Lot 109, S 89°-49'-15" E, a distance of 56.67 feet to a point at the POINT OF BEGINNING, referenced by a drill hole set in the side walk, S 0°-01'-50" W, a distance of 2.50 feet.

THENCE, with the east line of the Wolfheim's Inc. tract (O.R. 51, Pg. 93), N 0°-01'-50" E, a distance of 79.80 feet to a MAG nail set in a drill hole.

THENCE, with the south line of the Reser Properties tract (O.R. 119, Pg. 492, Tract II), S 89°-49'-43" E, a distance of 19.33 feet to a MAG nail set in a drill hole.

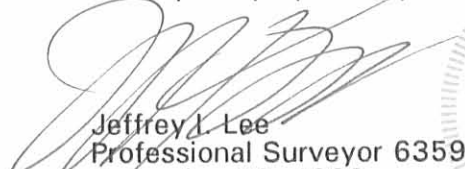
THENCE, with the west lines of the Reser Properties tract (O.R. 119, PG. 492 Tract II) and the Joanna Dodge tract (Vol. 381, PG. 720 Parcel I), S 0°-01'-50" W, a distance of 79.80 feet to a point referenced by a drill hole set in the side walk, S 0°-01'-50" W, a distance of 2.50 feet.

THENCE, with the north right-of-way line of Columbus Avenue (80 feet wide) and the south line of Lot 109, N 89°-49'-15" W, a distance of 19.33 feet to the point of beginning.

Containing 0.035 acre.

The basis for bearings is the center-line of Columbus Avenue being N 89°-49'-15" W, and all other bearings are from angles and distances measured in a field survey by Lee Surveying and Mapping Co., Inc. on December 16, 1998.

Description prepared by:


Jeffrey I. Lee
Professional Surveyor 6359
December 30, 1998



L-2690

ORIGINAL STAMP IN GREEN

INDEXED
6564 10

CANBY ALLEY (16.5' WIDE)

RIGHT-OF WAY
O.R. 375. PG. 906

RESER PROPERTIES
TRACT I
O.R. 119. PG. 492

RESER PROPERTIES
TRACT II
O.R. 119. PG. 492

S 89° 49' 43" E

19.33'

LOT 110

WOLFHEIM'S, INC.
O.R. 51. PG. 93

N 00° 01' 50" E

79.80'

WOLFHEIM'S
O.R. 375. PG. 906

79.80'

S 00° 01' 50" W

JOANNA DODGE
PARCEL I

VOL. 381. PG. 720

LOT 109

0.035 ACRE

S 89° 49' 15" E
56.67'

2.50'

19.33'

2.50'

N 89° 49' 15" W

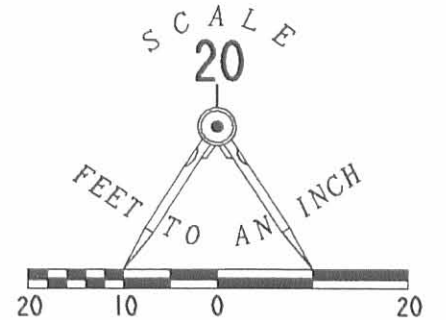
MAIN STREET
(80' WIDE)

COLUMBUS AVENUE

(80' WIDE)

N 89° 49' 15" W BASIS FOR BEARINGS

6564 1P



LEGEND

- MAG NAIL SET IN DRILL HOLE
- DRILL HOLE SET

SURVEY OF THE
WOLFHEIM'S INC., AN
OHIO CORPORATION
LOTS 109, AND 110
OFFICIAL RECORD 375, PAGE 906
CITY OF BELLEFONTAINE
LAKE TOWNSHIP
LOGAN COUNTY
OHIO

SURVEYED BY:

Jeffrey I. Lee
JEFFREY I. LEE
PROFESSIONAL SURVEYOR 6359
DECEMBER 16, 1998



ORIGINAL STAMP IN GREEN

COPYRIGHT 1998 BY:
LEE SURVEYING & MAPPING CO., INC.
117 North Madriver Street
BELLEFONTAINE, OHIO 43311
(937) 593-7335

D-340 HUBER L-2690-3

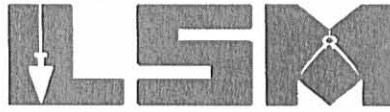
2 WORKING DAYS
BEFORE YOU DIG
CALL TOLL FREE **800-362-2764**
OHIO UTILITIES PROTECTION SERVICE.

Rec'd 3-14-06 smj dk

Lee Surveying and Mapping Co., Inc.

Land Surveys • Topography • Subdivisions • Construction Layout

117 N. Madriver St.
Bellefontaine OH 43311



Phone: (937) 593-7335
Fax: (937) 593-7444

1975-2005 - 30 YEARS OF EXCELLENCE

WOLFHEIM'S, INC.

PART OF LOT 109 AND PART OF LOT 110

Lying in the City of Bellefontaine, Lake Township, Logan County, Ohio.

Being all of the Wolfheim's Inc. part of Lot 109 and part of Lot 110 of the original plat of Bellefontaine (Plat Cabinet A, Slide 1) as deeded and described in Official Record 51, Page 93 of the Logan County Records of Deeds and being more particularly described as follows:

Beginning at a point at the southwest corner of Lot 109 at the intersection of the north right-of-way of Columbus Street and the east right-of-way of Canby Alley. Said point referenced by a MAG nail set, N 89°-58'-10"W, a distance of 1.00 feet and a MAG nail set, S 0°-01'-50"W, a distance of 2.50 feet.

THENCE, with the east right-of-way of Canby Alley (16.5 feet wide), N 0°-01'-50"E, a distance of 79.79 feet to a MAG nail set.

THENCE, with the south line of the Reser Properties part of Lot 110 (O.R. 119, Pg. 492, Tract II), S 89°-49'-43"E, a distance of 56.67 feet to a MAG nail found.

THENCE, with the west line of the Timothy Irwin 0.035 acre tract being part of Lots 109 & 110 (O.R. 807, Pg. 823), S 0°-01'-50"W, a distance of 79.80 feet to a point on the south line of Lot 109 and the north right-of-way of Columbus Avenue, referenced by a drill hole found, S 0°-01'-50"W, a distance of 2.50 feet.

THENCE, with the south line of Lot 109 and the north right-of-way of Columbus Avenue (80 feet wide), N 89°-49'-15"W, a distance of 56.67 feet to the point of beginning.

The basis for bearings is the center-line of Columbus Avenue, being N 89°-49'-15"W, and all other bearings are from angles and distances measured in a field survey by Lee Surveying and Mapping Co., Inc. on March 9, 2006.



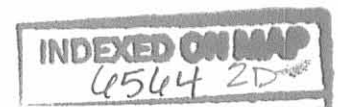
ORIGINAL STAMP IN GREEN

Description prepared by:

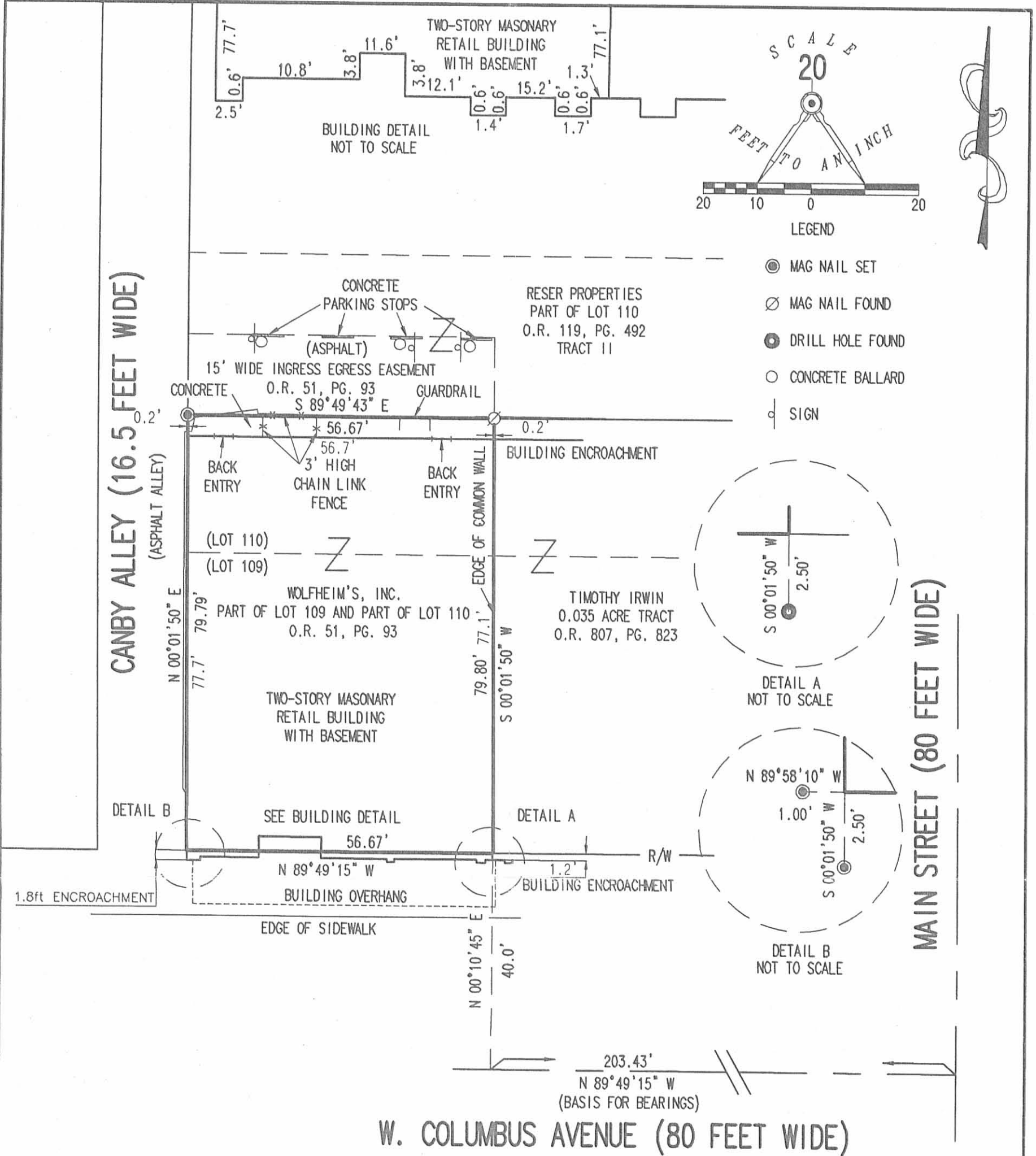
A handwritten signature in black ink that reads 'William K. Bruce'.

William K. Bruce
Professional Surveyor 7437
March 13, 2006

2690036



REC'D 3-14-06 8M OK



A BOUNDARY AND MORTGAGE LOCATION SURVEY OF THE WOLFHEIM'S, INC.

PART OF LOT 109 AND PART OF LOT 110 ORIGINAL PLAT OF BELLEFONTAINE PLAT CABINET A, SLIDE 1 OFFICIAL RECORD 51, PAGE 93 CITY OF BELLEFONTAINE LAKE TOWNSHIP LOGAN COUNTY, OHIO

I HEREBY STATE TO ELDER, ROBERTS & ELDER ATTORNEYS AT LAW AND TO THAT ON MARCH 9, 2006, LEE SURVEYING AND MAPPING CO., INC. MADE AN ACCURATE SURVEY OF THE PREMISES SHOWN HEREON AND THAT THERE ARE NO EASEMENTS OR ENCROACHMENTS VISIBLE ON THE GROUND OTHER THAN THOSE SHOWN HEREON. THIS IS A MORTGAGE LOCATION AND BOUNDARY SURVEY PREPARED IN ACCORDANCE WITH CHAPTER 4733-38 OF THE OHIO ADMINISTRATIVE CODE. THIS MORTGAGE SURVEY IS NOT TO BE USED BY ANYONE FOR FUTURE TRANSFERS, OR FOR CONSTRUCTION PURPOSES. BUILDING DIMENSIONS ARE MEASURED TO FOUNDATION UNLESS OTHERWISE NOTED.

William K. Bruce
WILLIAM K. BRUCE
PROFESSIONAL SURVEYOR 7437
MARCH 9, 2006

COPYRIGHT 2006 BY:
LEE SURVEYING & MAPPING CO., INC.
117 North Madriver Street
BELLEFONTAINE, OHIO 43311
(937) 593-7335

INDEXED ON MAP
6564 2P



2 WORKING DAYS
BEFORE YOU DIG

CALL TOLL FREE **800-362-2764**

ORIGINAL STAMP IN GREEN

OHIO UTILITIES PROTECTION SERVICE

REC'D 12-4-09 SMY AK ✓

Lee Surveying and Mapping Co., Inc.

Land Surveys • Topography • Subdivisions • Construction Layout

117 N. Madriver St.
Bellefontaine OH 43311



Phone: (937) 593-7335
Fax: (937) 593-7444
surveys@lsminc.us

ABRAHAM 0.108 ACRE

Lying in the City of Bellefontaine, Lake Township, Logan County, Ohio.

Being all of the Richard H. Abraham and Kay Abraham part of Lot 109 of the original plat of Bellefontaine (Plat Cabinet A, Slide 1) as deeded and described in Official Record 79, Page 350 of the Logan County Records of Deeds and being more particularly described as follows:

Beginning on a point on the southeast corner of Lot 109 at the intersection of the west right-of-way of Main Street and the north right-of-way of Columbus Avenue, referenced by MAG nails set bearing S 89°-49'-15"E, a distance of 2.50 feet and S 00°-01'-50"W, a distance of 2.50 feet.

THENCE, with the south line of Lot 109 and the north right-of-way of Columbus Avenue (80 feet wide), N 89°-49'-15"W, a distance of 85.50 feet to a point, referenced by a MAG nail set bearing S 00°-01'-50"W, a distance of 2.50 feet.

THENCE, with the east line of the Scott B. Stevens part of Lot 109 (O.R. 919, Pg. 68), N 00°-01'-50"E, a distance of 54.81 feet to a point on the north line of Lot 109.

THENCE, with the north line of Lot 109 and the south line of the Reser Properties, a Partnership, part of Lot 110 (O.R. 119, Pg. 492, Tract I), S 89°-49'-43"E, a distance of 85.50 feet to a point at the northeast corner of Lot 109 on the west right-of-way of Main Street, referenced by a MAG nail set bearing S 89°-49'-43"E, a distance of 2.50 feet.

THENCE, with the east line of Lot 109 and the west right-of-way of Main Street (80 feet wide), S 00°-01'-50"W, a distance of 54.82 feet to the point of beginning.

Containing 0.108 acre.

The basis for bearings is the south line of Lot 109, being N 89°-49'-15"W, and all other bearings are from angles and distances measured in a field survey by Lee Surveying and Mapping Co., Inc. on December 2, 2009.



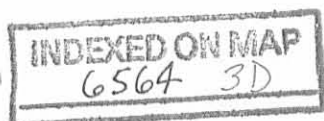
ORIGINAL STAMP IN GREEN

Description prepared by:

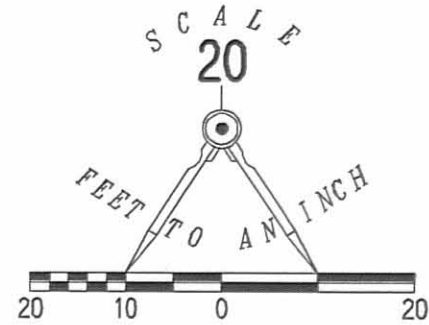
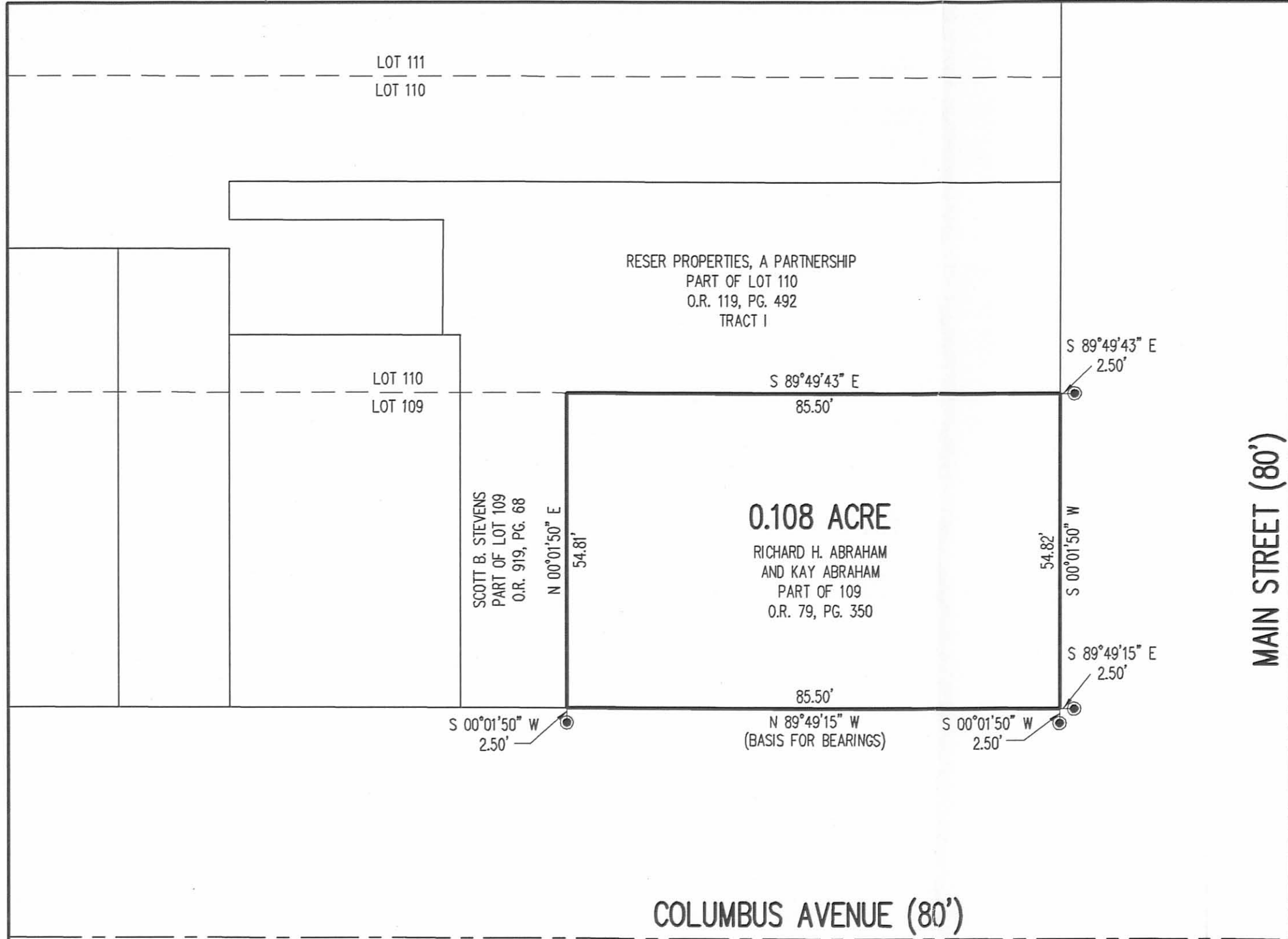
William K. Bruce

William K. Bruce
Professional Surveyor 7437
December 3, 2009

4880119



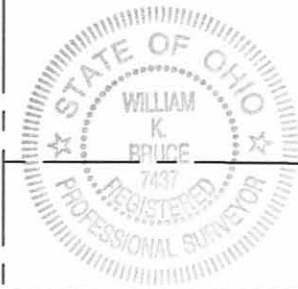
REC'D 12-4-09 smj ok ✓



RETRACEMENT SURVEY OF THE
 RICHARD H. ABRAHAM
 AND KAY ABRAHAM
 PART OF LOT 109
 ORIGINAL PLAT OF BELLEFONTAINE
 PLAT CABINET A, SLIDE 1
 OFFICIAL RECORD 79, PAGE 350
 CITY OF BELLEFONTAINE
 LAKE TOWNSHIP
 LOGAN COUNTY, OHIO

SURVEYED BY:

William K. Bruce
 WILLIAM K. BRUCE
 PROFESSIONAL SURVEYOR 7437
 DECEMBER 2, 2009



ORIGINAL STAMP IN GREEN

COPYRIGHT 2009 BY:
LEE SURVEYING & MAPPING CO., INC.
 117 North Madriver Street
 BELLEFONTAINE, OHIO 43311
 (937) 593-7335
 surveys@lsminc.us
 KSS D1209 4880119 L-4880-3

2 WORKING DAYS
BEFORE YOU DIG
 CALL TOLL FREE **800-362-2764**
 OHIO UTILITIES PROTECTION SERVICE

INDEXED ON MAP
 6564 3P