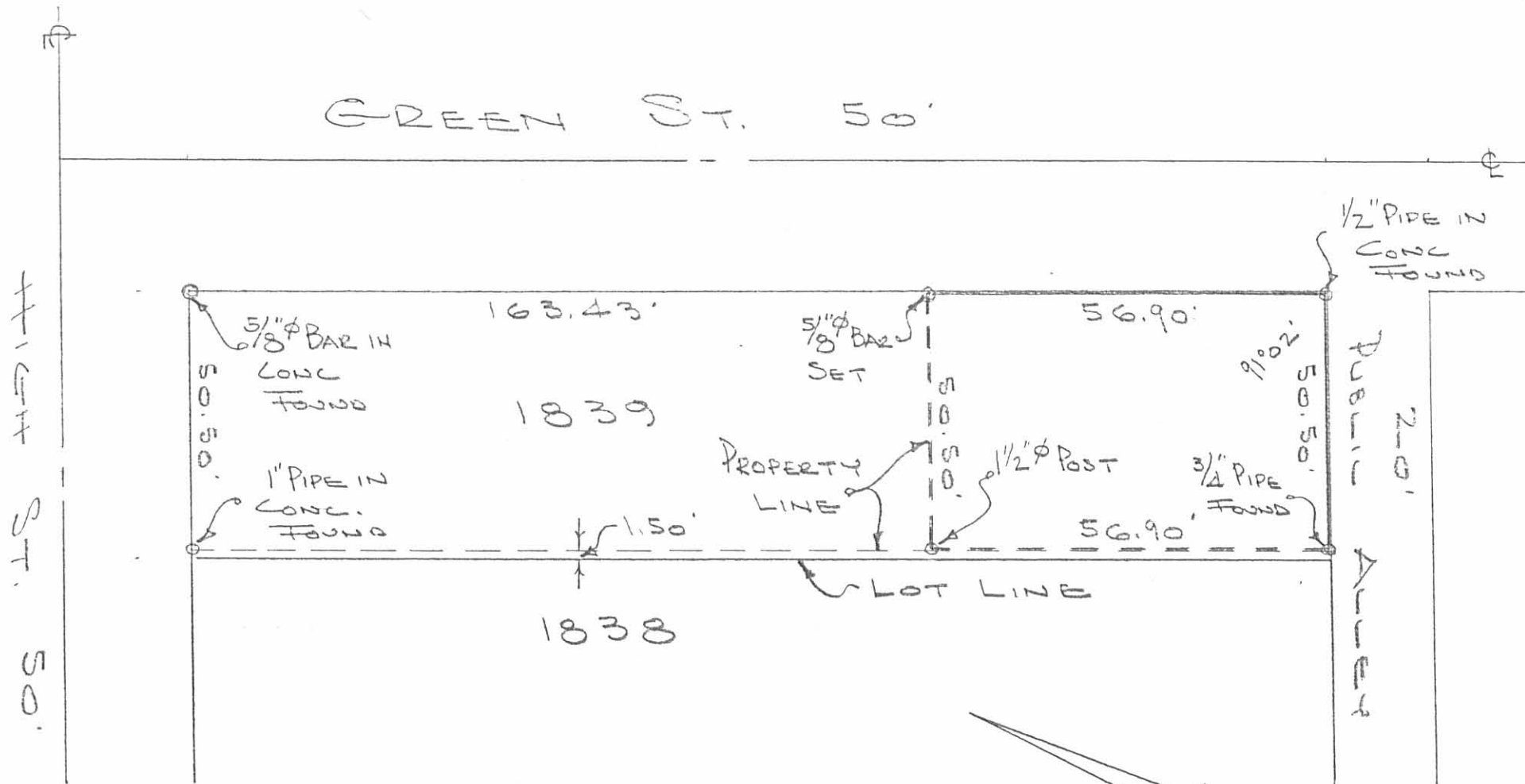


Part Lot 1839
Bellefontaine, Ohio
January 17, 1981

The following described real estate situated in the City of Bellefontaine,
Lake Township, Logan County, Ohio and being part of Lot 1839 of
McLaughlin and McKees Addition to said city as shown in Logan County
Recorders Plat Cabinet A, slide 29 and being more particularly described
as follows:

Being 56.90 feet off of the south end of said lot 1839, except 1.50 feet
off of the west side thereof.

INDEXED ON MAP
6583 1D



SURVEY OF
 PART LOT 1839
 BELLEFONTAINE, OHIO
 JANUARY 17, 1981
 SCALE 1" = 30'

DAN L. DOOSON
 REG. SURVEYOR 4270
 BELLEFONTAINE, O.

INDEXED ON MAP
 6583 1P