

Lee Surveying and Mapping Co.



Farm Surveys • Lot Surveys • Topography • Subdivisions • Construction Layout

855 EAST SANDUSKY AVENUE
BELLEFONTAINE, OHIO 43311

(513) 593-5780

CLAYTON M. LEE, P.S.
JEFFREY I. LEE, P.S.

BELLEFONTAINE SCHOOL BOARD TO
CITY OF BELLEFONTAINE

STREET WIDENING DEDICATION

Lying in the City of Bellefontaine, Section 28, T-4, R-14, Lake Township, Logan County, Ohio.

Being a strip of land lying along the north line of Lake Avenue and running the full length along the south line of that 25.66 acres deeded to the City of Bellefontaine by the Board of Education and more particularly described as follows:

Beginning at an iron spike found at the intersection of the center-lines of Lake Avenue and Ludlow Road (Southeast corner of Fractional Section 28).

THENCE, with the center-line of Lake Avenue, N 87°-15' W, a distance of 1363.82 feet to the southwest corner of said 25.66 acre tract.

THENCE, with the west line of said 25.66 acre tract, N 6°-12'-12" W, a distance of 40.49 feet to a point lying 40 feet northerly of the center-line of Lake Avenue when measured at right angles.

THENCE, parallel to and 40 feet northerly from the center-line of Lake Avenue, S 87°-15' E, a distance of 1105.12 feet.

THENCE, N 74°-44'-30" E, a distance of 236.82 feet to the center-line of Ludlow Road.

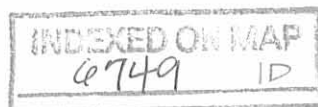
THENCE, with the center-line of Ludlow Road, S 16°-36'-30" E, a distance of 120.00 feet to the point of beginning. Containing 1.460 acres.

Prepared by:

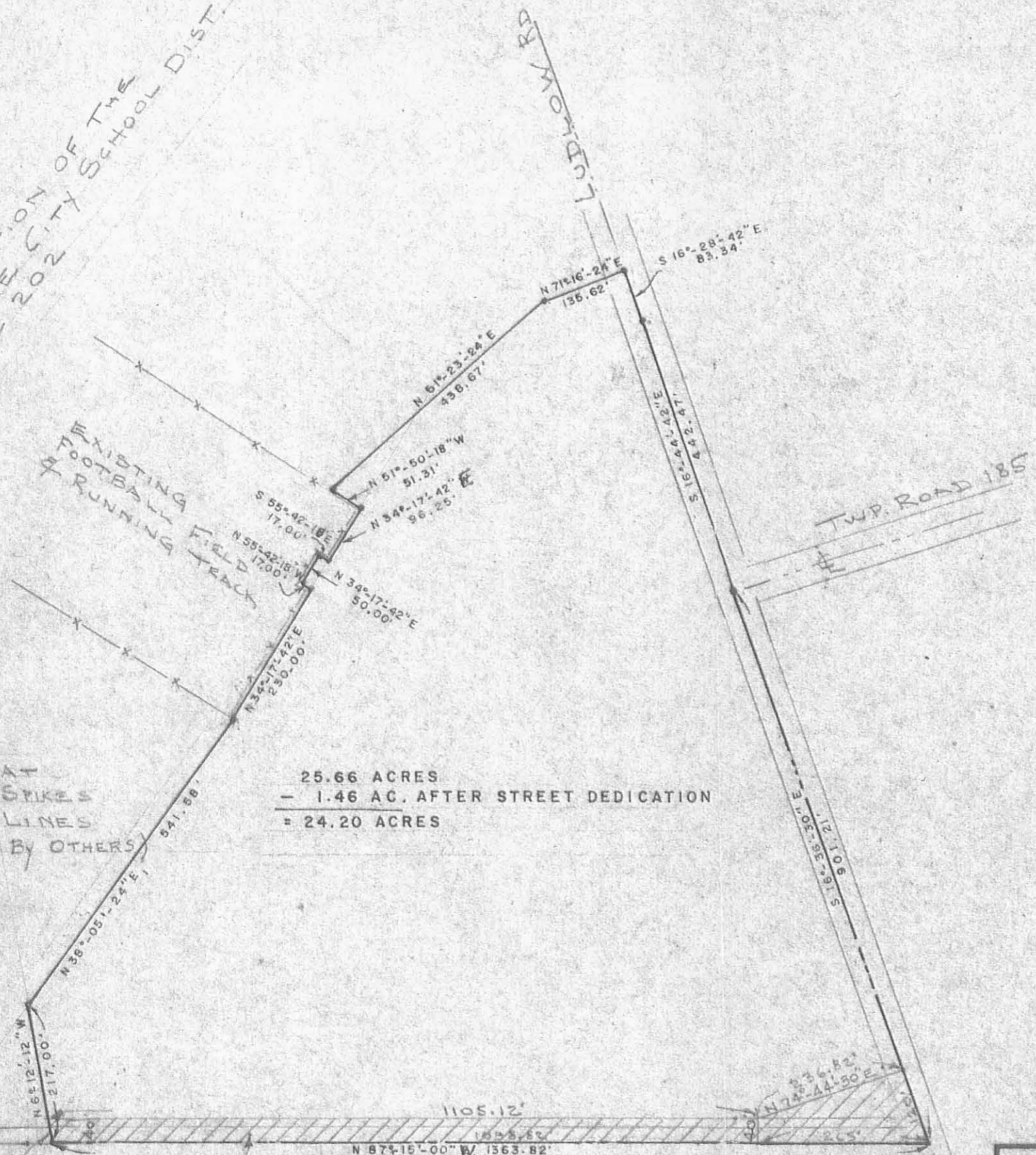


Clayton M. Lee

Clayton M. Lee
Reg. Surveyor No. 6181
6-29-82



BOARD OF EDUCATION OF THE CITY OF BELLEFONTAINE, OHIO
 VOL. 304, PAGE 202



NOTE:
 IRON RODS FOUND AT ALL INTERIORS & SPIKES FOUND ON CENTER-LINES OF STREETS (SET BY OTHERS)

25.66 ACRES
 - 1.46 AC. AFTER STREET DEDICATION
 = 24.20 ACRES

CROSS-HATCHED AREA = 1.460 AC.
 DEDICATION FOR STREET WIDENING TO CITY OF BELLEFONTAINE, OHIO

6749 IP
 INDEXED ON MAP

PLAT OF LAND CONVEYED TO THE CITY OF BELLEFONTAINE BY THE CITY BOARD OF EDUCATION PREPARED BY:

Clayton M. Lee

CLAYTON M. LEE
 REG. SURVEYOR 6181, JUNE 29, 1982



NOTE: SURVEY BY OTHERS.
 LOCATED IN THE CITY OF BELLEFONTAINE, SEC. 28, T-4, R-14, M.R.S. LAKE TOWNSHIP, LOGAN COUNTY, OHIO

TOLERANCES (EXCEPT AS NOTED)	REVISIONS			DRAWN BY C.M. LEE CHK'D	SCALE 1" = 200'	MATERIAL
	NO.	DATE	BY			
DECIMAL	1			TRACED	DATE	DRAWING NO. L-821-3
±	2					
FRACTIONAL	3			APP'D		
±	4					
ANGULAR	5					
±						