

Lee Surveying and Mapping Co.



Farm Surveys • Lot Surveys • Topography • Subdivisions • Construction Layout

855 EAST SANDUSKY AVENUE
BELLEFONTAINE, OHIO 43311

(513) 593-5780

CLAYTON M. LEE, P.S.
JEFFREY I. LEE, P.S.

RETENTION AND STORM LINE EASEMENT

POWELL TO WESTERMAN

Lying in the City of Bellefontaine, V.M.S. 4478, Lake Township, Logan County, Ohio and being part of that land lying in the name of Robert E. Powell deeded and described in Volume 328, Page 39-42 of the Logan County Records of Deeds and lying adjacent to a 13.58 acre tract in the name of Westerman (Volume 370, Page 804) and more particularly described as follows:

Beginning at the northwest corner of the said 13.58 acres.

THENCE, with the north line of said 13.58 acres, S 83°-40' E, a distance of 13.95 feet.

THENCE, N 37°-52'-21" W, a distance of 153.96 feet to the south line of the retention pond area, this line forming the east line of a 20 foot wide storm sewer easement.

THENCE, with the retention pond area, N 82°-07' E, a distance of 40.45 feet to an iron rod.

THENCE, N 7°-53' W, a distance of 70.00 feet to an iron rod.

THENCE, S 82°-07' W, a distance of 205.00 feet to an iron rod.

THENCE, S 7°-53' E, a distance of 70.00 feet to an iron rod.

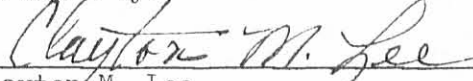
THENCE, N 82°-07' E, a distance of 141.45 feet to the northwest corner of the 20 foot storm line easement.

THENCE, with the west line of said 20 foot easement, S 37°-52'-21' E, a distance of 165.50 feet to the west line of the aforementioned 13.58 acres.

THENCE, with said west line, N 5°-59'-03" E, a distance of 13.95 feet to the point of beginning. Containing 0.401 acre.

Last previous deed reference: Volume 328, Page 39-42.

Surveyed by:


Clayton M. Lee
Reg. Surveyor No. 6181
7-6-79

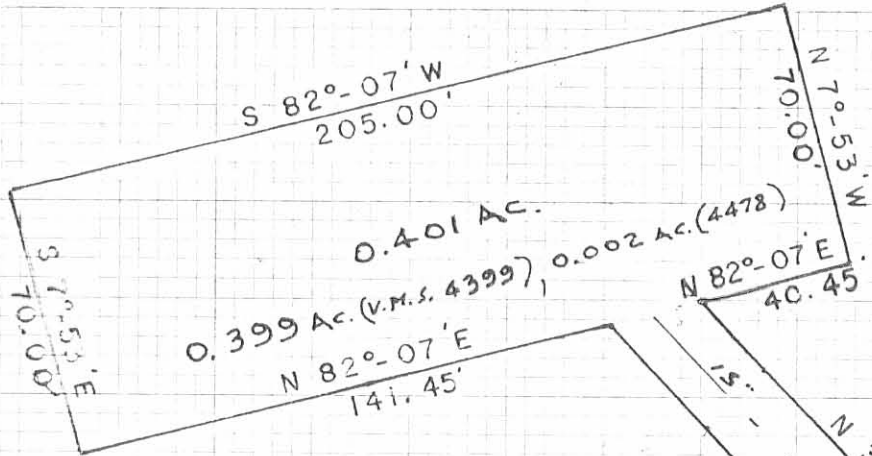


6941 ID

INDEXED ON MAP



SCALE ~ 1" = 60'



N 82°-07' E 40.45'

N 37°-52'-21" W 153.96'
 S 37°-52'-21" E 165.50'

V.M.S. 4399
 V.M.S. 4478

13.95'

S 83°-40' E

NW Cor. 18.58 Ac.
 Vol. 370, Pg. 804

4425

4424

SURVEY OF RETENTION POND EASEMENT
 ON THE ROBERT E. POWELL LAND
 DEED VOL. 328, Pp. 39-42.
 CITY OF BELLEFONTAINE
 V.M.S. 4478, LAKE TWP, & V.M.S. 4399
 LOGAN COUNTY, OHIO

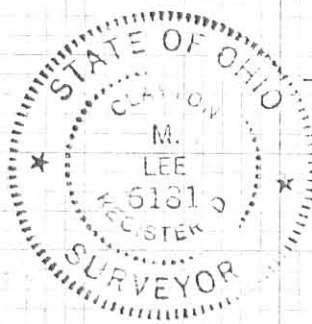
By:

Clayton M. Lee
 Clayton M. Lee

Reg. Surveyor No. 6181
 7-6-79

6941 IP

INDEXED ON MAP



L-202-5