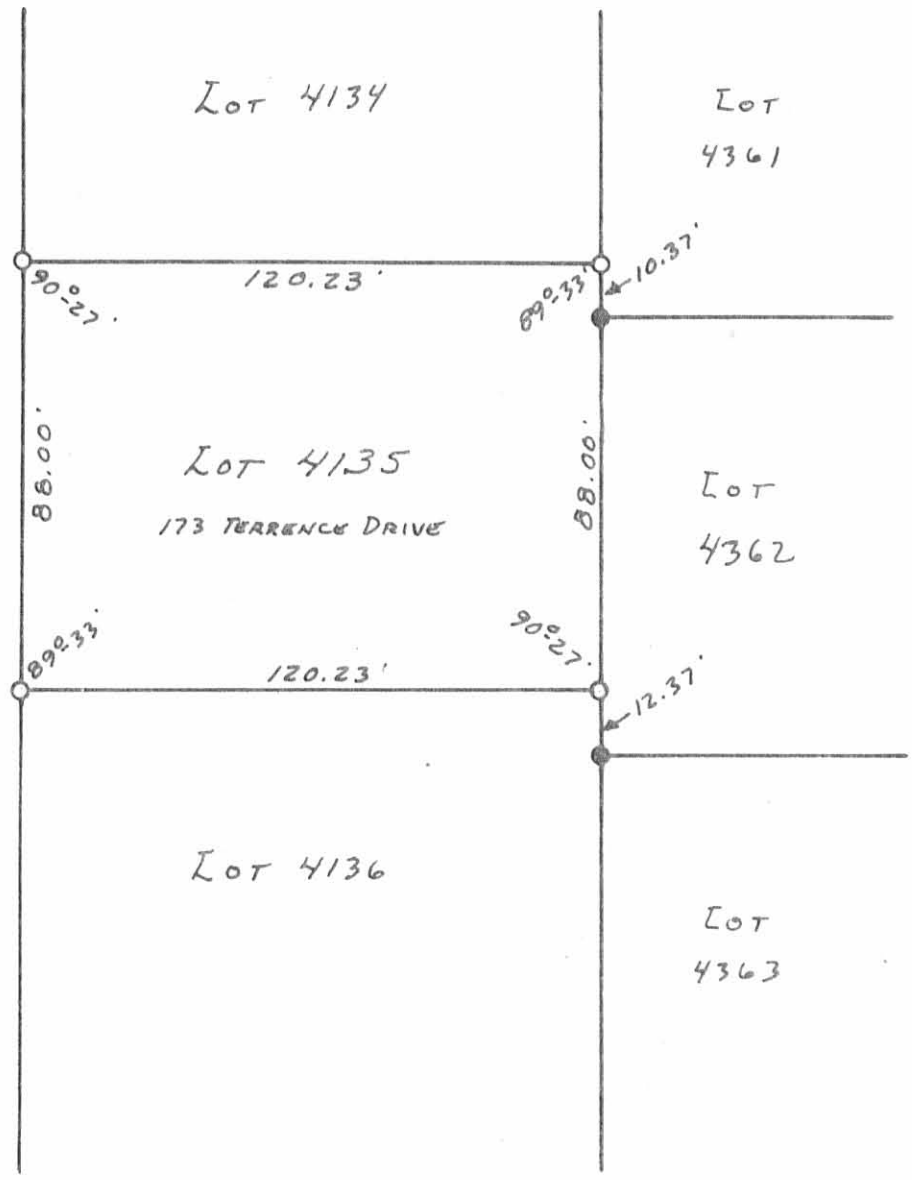




TERRENCE DRIVE - 50'





 6948 IP
 INDEXED ON MAP

* - 5/8" IRON BARS FD.
 O - IRON PIPES FD. OR SET.

SURVEYED AND PLATTED BY
 DANIEL E. GILBERT, P.S.
 REG. SUR. NO. 5402
 1041 N. MAIN ST.
 BELLEFONTAINE, OHIO 43311

GIFFORD SURVEY
 LOT NO. 4135
 CITY OF BELLEFONTAINE
 LAKE TOWNSHIP
 LOGAN COUNTY, OHIO
 JULY 14, 1979

SCALE: 1" = 40'