

REFERENCES
 LOGAN COUNTY ENGINEER'S FILES:
 V-41, DATED JUNE 30, 1915
 FIELD BOOK 702, PAGES 9-12
 R-7910 AND R-5254
 LOGAN COUNTY COMMISSIONERS' JOURNAL 18, PAGE 569



LOGAN COUNTY COMMISSIONERS	<i>Russell Amstutz</i>	12-11-97
		DATE
	<i>George W. Clayton</i>	12-16-97
		DATE
	<i>John Bayless</i>	12-16-97
		DATE
LOGAN COUNTY ENGINEER	<i>Anna Klap</i>	12/31/97
		DATE
CHAIRMAN, TOWNSHIP TRUSTEES	<i>Robert McCluskey</i>	12/29/97
		DATE
L.U.C. PLANNING DIRECTOR	<i>Carroll Scott</i>	12-11-97
		DATE
MAYOR OF BELLEFONTAINE	<i>Earl E. Stewart</i>	12-16-97
		DATE
PRESIDENT, CITY COUNCIL	<i>William R. Patterson</i>	12-22-97
		DATE
CLERK, CITY COUNCIL	<i>Vicki Yopakam</i>	12-17-97
		DATE
PLAT PRE-APPROVED	<i>Jon C. Hines</i>	11-14-97
		DATE
PLAT CHECKED	<i>Jon C. Hines</i>	5-4-98
		DATE
CITY ORDINANCE NUMBER	97-81 (11-11-97)	
TRANSFERRED THIS	5 th DAY OF May	19 98
LOGAN COUNTY AUDITOR	<i>Michael E. Godwin</i>	
RECEIVED FOR RECORD AT	10:41:01 O'CLOCK A.M.	
THIS	5 th DAY OF May	19 98
LOGAN COUNTY RECORDER	<i>Carolyn Collins se</i>	
RECORDED IN PLAT CABINET	B	SLIDE 29B

CITY OF BELLEFONTAINE, OHIO
 ANNEXATION MAP OF
 204.6 +/- ACRES OUT OF
 THE JOYCE ANN LEISTER,
 JANICE BELLE GBOY, MARLYN DUANE KELLY,
 AND CLIFFORD E. KELLY
 ORIGINAL 214.24 ACRE TRACT
 OFFICIAL RECORD 125, PAGE 653
 AND ORIGINAL 1.104 ACRE TRACT
 OFFICIAL RECORD 178, PAGE 809
 SECTION 4, TOWN 3, RANGE 14
 HARRISON TOWNSHIP
 LOGAN COUNTY, OHIO

THENCE, with the lines of the Robert J. Downing original 40.0 acre tract (Vol. 255, Pg. 513) the following two courses:
 N 3°-03'-40" E, a distance of 838.50 feet to a point.
 N 87°-08'-56" W, a distance of 1313.41 feet to a point on the west line of Section 4 and the center-line of Township Road 32 (60 feet wide).
 THENCE, with the west line of Section 4 and the center-line of Township Road 32, N 0°-04'-42" E, a distance of 60.01 feet to a point.
 THENCE, with the present south line of the Commissioners of Logan County, Ohio original 40.0 acre tract (Vol. 133, Pg. 485), S 87°-08'-56" E, a distance of 1353.12 feet to a point.
 THENCE, with the east line of the Board of Logan County Commissioners 1.104 acre tract (O.R. 172, Pg. 660), N 3°-03'-40" E, a distance of 1226.04 feet to a point on the south right-of-way of Urbana, Bellefontaine, & Northern Railway Company 3.03 acres (Vol. 97, Pg. 414).
 THENCE, with the south right-of-way of the said 3.03 acre tract the following two courses:
 S 87°-33'-44" E, a distance of 1993.62 feet to a point.
 N 79°-20'-58" E, a distance of 356.15 feet to a point.
 THENCE, with the existing corporation line of The City of Bellefontaine the following two courses:
 S 3°-21'-16" E, a distance of 30.66 feet to a point.
 With the north line of the southeast quarter of Section 4 and the south line of The City of Bellefontaine 8.03 acre tract (Vol. 284, Pg. 84), S 87°-33'-44" E, a distance of 1188.94 feet to a point.

LOIS V. MILLER
 141.62 ACRES
 O.R. 258, PG. 881

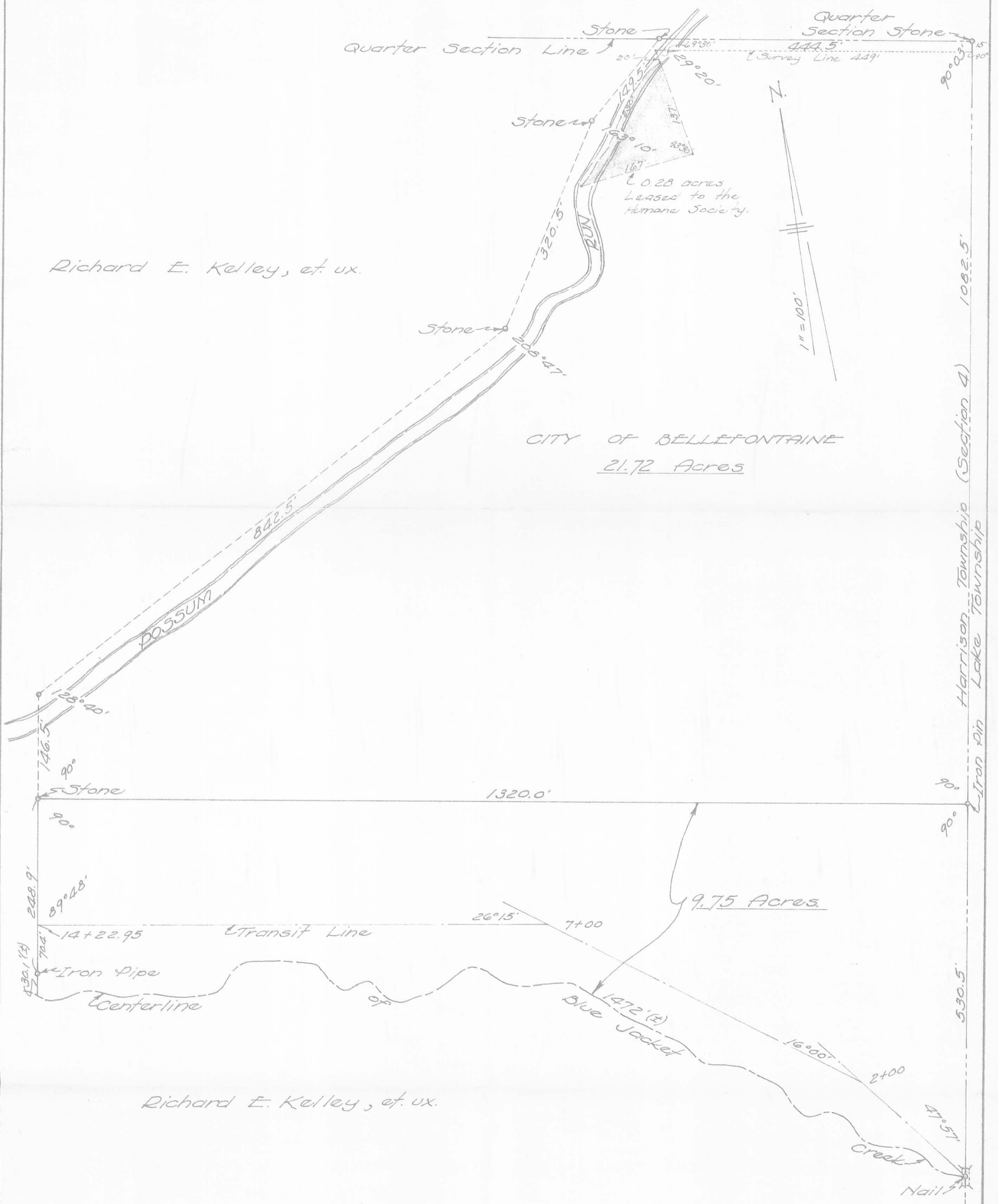
ANDREW G. DETRICK
 130.0 ACRES
 VOL. 401, PG. 293

THENCE, with the lines of the City of Bellefontaine 21.72 acre tract (Vol. 110, Pg. 177), and the corporation line the following five courses:
 S 41°-46'-16" W, a distance of 149.50 feet to a point.
 S 24°-56'-16" W, a distance of 320.50 feet to a point.
 S 53°-43'-16" W, a distance of 842.50 feet to a point.
 S 2°-19'-16" W, a distance of 146.50 feet to a point.
 S 87°-41'-07" E, a distance of 1303.63 feet to a point on the center-line of Township Road 216 and the east line of Section 4.
 THENCE, with the east line of Section 4 and the center-line of Township Road 216, S 3°-15'-00" W, a distance of 1590.50 feet to the point of beginning.
 Containing 204.6 plus or minus acres, of which 3.0 plus or minus acres are within the highway rights-of-way, 203.496 acres are out of the 214.24 acre tract plus all of the 1.104 acre tract.
 The basis for bearings is the east line of Section 4, being S 03°-15'-00" W, and all other bearings are from angles and distances calculated from records by Lee Surveying and Mapping Co., Inc. on June 6, 1996. This is not a boundary survey as defined in 4733-37 of the Ohio Administrative Code.
 Description prepared by Jeffrey I. Lee, Professional Surveyor 6359, June 6, 1996.

2 WORKING DAYS
BEFORE YOU DIG
 CALL TOLL FREE 800-362-2764
 OHIO UTILITIES PROTECT OR SERVICE

COPYRIGHT 1996 BY:
 LEE SURVEYING & MAPPING CO., INC.
 143 East Columbus Avenue
 BELLEFONTAINE, OHIO 43311
 (513) 593-7356
 D 284 CKELLYA JUNE 6, 1996 L-1893-1
 DRAWN BY: BRANDI PYLES

"MAP OF TERRITORY TO BE ANNEXED TO THE CITY OF BELLEFONTAINE"



KK-21

INDEXED ON MAP
750.9 1P

Cecil E. MENGERINK
C.E.M. 12/15/60

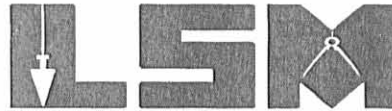
SEWAGE DISPOSAL SITE
 BELLEFONTAINE OHIO.
 SEC. 4, Harrison Twp.
 TOWN 3, Range 14.
 LOGAN County

KK-21

Received 4/16/04 OK gms

Lee Surveying and Mapping Co., Inc.

Land Surveys • Topography • Subdivisions • Construction Layout



117 N. Madriver St.
Bellefontaine OH 43311

Phone: (937) 593-7335
Fax: (937) 593-7444

SEE SURVEYORS
AFFIDAVIT

**KELLY
83.153 ACRES**

Lying in Section 4, Town 3, Range 14, Between the Miami Rivers Survey, City of Bellefontaine, Harrison Township, Logan County, Ohio.

Being out of the Joyce Ann Leister, Janice Belle Geboy, Marlyn Duane Kelly and Clifford Kelly 23.21 acre tract, 77.5 acre tract, and 113.67 acre tract as deeded and described in Official Record 125, Page 653, Parcel One, First Tract, Parcel One, Second Tract, Parcel One, Fourth Tract and Parcel Two and all of the Clifford E. Kelly, Marlyn D. Kelly, Janice L. Geboy and Joyce Ann Leister 1.104 acre tract as deeded and described in Official Record 178, Page 809 of the Logan County Records of Deeds and being more particularly described as follows:

Beginning at a stone found in a monument box at the southwest corner of Section 4, on the intersection of center-lines of County Highway 32 (60 feet wide) and County Highway 11 (60 feet wide), Station 53+44 (County Highway 32), Logan County Engineers' Field Book 615, Page 56.

THENCE, with the west line of Section 4 and within the right-of-way of County Highway 32, N 3°-04'-17"E, a distance of 1300.12 feet to a MAG nail found at the TRUE POINT OF BEGINNING.

THENCE, with the west line of Section 4 and within the right-of-way of County Highway 32, N 3°-04'-17"E, a distance of 60.00 feet to a 5/8 inch iron bolt found.

THENCE, with the south lines of the Commissioners of Logan County, Ohio 37 acre tract (Vol. 133, Page 485) and the Board of Logan County Commissioners 1.104 acre tract (O.R. 172, Pg. 660), S 86°-49'-26"E, a distance of 1376.79 feet to a 5/8 inch iron rod found, passing a 5/8 inch iron rod set at 29.79 feet.

THENCE, with the east line of the said 1.104 acre tract, N 3°-02'-45"E, a distance of 1162.35 feet to a point under water, passing a 5/8 inch iron rod set at 1064.60 feet.

THENCE, with the south lines of the Urbana, Bellefontaine and Northern Railway Co. 3.03 acre tract (Vol. 97, Pg. 414), the following five courses:

S 86°-13'-50"E, a distance of 902.06 feet to a 5/8 inch iron rod found.

With a curve to the left, having a central angle of 10°-45'-18", a radius of 5844.65 feet, an arc length of 1097.10 feet, a chord bearing of N 88°-23'-31"E, a chord distance of 1095.49 feet to a 5/8 inch iron rod found.

N 6°-59'-08"W, a distance of 15.00 feet to a 5/8 inch iron rod found.

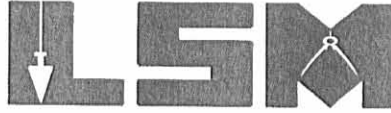
With a curve to the left, having a central angle of 3°-32'-07", a radius of 5829.65 feet, an arc length of 359.70 feet, a chord bearing of N 81°-14'-48"E, a chord distance of 359.64 feet to a 5/8 inch iron rod found.

INDEXED ON MAP
7509 2D-1

Lee Surveying and Mapping Co., Inc.

Land Surveys • Topography • Subdivisions • Construction Layout

117 N. Madriver St.
Bellefontaine OH 43311



Phone: (937) 593-7335
Fax: (937) 593-7444

N 79°-28'-45"E, a distance of 266.86 feet to a 5/8 inch iron rod found.

THENCE, with the west line of the City of Bellefontaine, a Municipal Corporation 8.03 acre tract (Vol. 284, Pg. 84), S 3°-03'-30"W, a distance of 94.82 feet to a 5/8 inch iron rod found.

THENCE, with the north line of the southeast quarter of Section 4 and the south line of the said 8.03 acre tract, S 87°-01'-12"E, a distance of 907.48 feet to a point in Possum Run, passing a 5/8 inch iron rod set at 857.48 feet.

THENCE, with the west line of the City of Bellefontaine original 21.72 acre tract (Vol. 110, Pg. 177), S 42°-18'-48"W, a distance of 149.50 feet to a 5/8 inch iron rod set.

THENCE, with the west line of the said 21.72 acre tract and the north bank of Possum Run, the following two courses:

S 25°-28'-48"W, a distance of 320.50 feet to a 5/8 inch iron rod set.

S 54°-15'-48"W, a distance of 842.50 feet to a 5/8 inch iron rod set.

THENCE, continuing with the west line of the said 21.72 acre tract and crossing Possum Run, S 2°-51'-48"W, a distance of 146.50 feet to a 5/8 inch iron rod set.

THENCE, N 87°-11'-20"W, a distance of 1006.46 feet to a 5/8 inch iron rod set.

THENCE, S 18°-24'-17"W, a distance of 280.64 feet to a 5/8 inch iron rod set.

THENCE, with an extension of and with the north line of the Karen I. Kerns 29.053 acre tract (O.R. 533, Page 77, Tract II), N 86°-48'-55"W, a distance of 2932.98 feet to the point of beginning, passing a MAG nail found at 2902.76 feet.

Containing 83.153 acres, of which 0.021 acre is within the highway right-of-way.

The basis for bearings is the west line of Section 4, being N 3°-04'-17"E, and all other bearings are from angles and distances measured in a field survey by Lee Surveying and Mapping Co., Inc. on April 8, 2004.

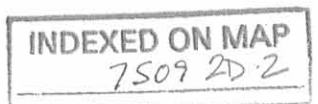
Description prepared by:

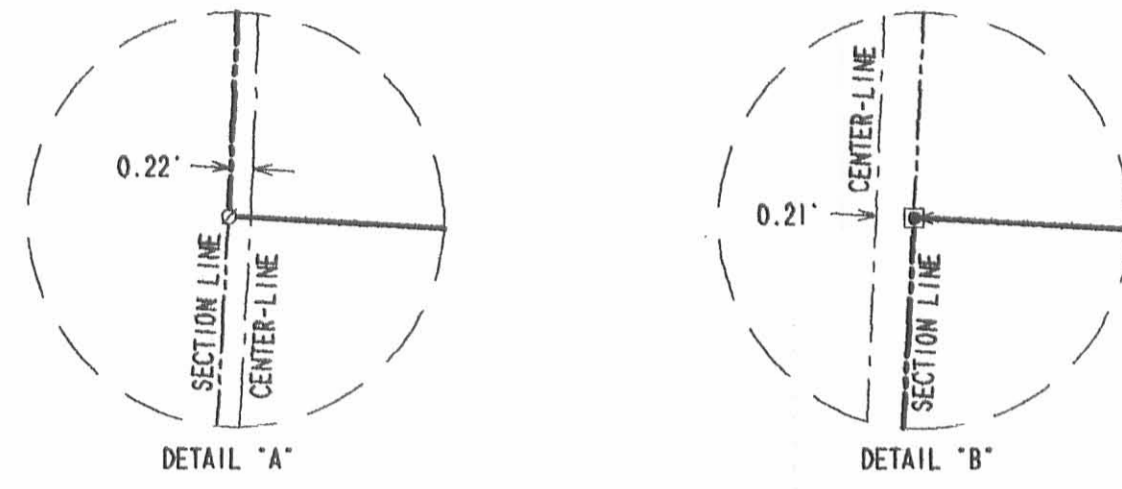


ORIGINAL STAMP IN GREEN

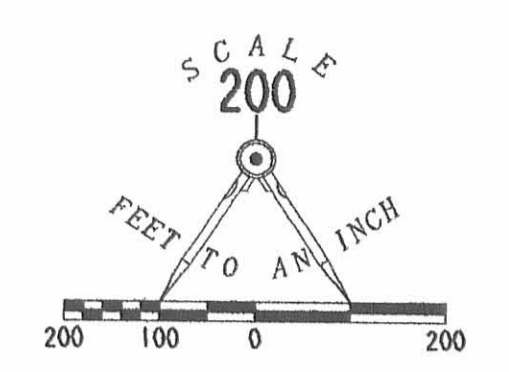
A handwritten signature in black ink, appearing to read 'Jeffrey I. Lee'.
Jeffrey I. Lee
Professional Surveyor 6359
April 13, 2004

L-1893

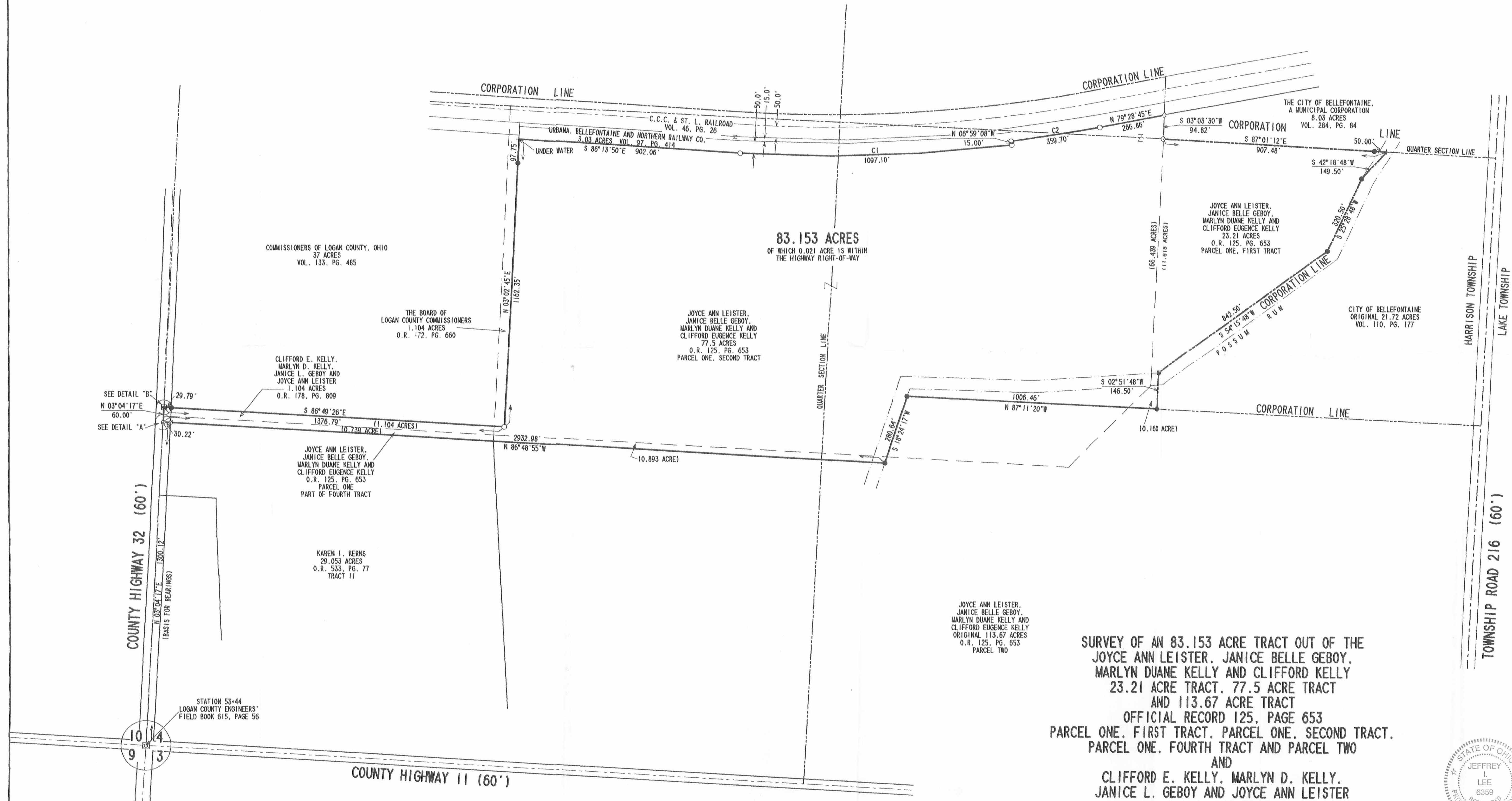




CURVE	DELTA ANGLE	RADIUS	ARC	TANGENT	CHORD	CHORD BEARING
C 1	10° 45' 18"	5844.65'	1097.10'	550.17'	1095.49'	N 88° 23' 31" E
C 2	3° 32' 07"	5829.65'	359.70'	179.91'	359.64'	N 81° 14' 48" E



- LEGEND:
- MAG NAIL FOUND
 - 5/8 INCH IRON ROD SET
 - 5/8 INCH IRON ROD FOUND
 - ⊗ 5/8 INCH IRON BOLT FOUND
 - ⊠ STONE FOUND IN A MONUMENT BOX



SEE OTHER MAP FILED WITH SURVEYORS RECORDS

SURVEY OF AN 83.153 ACRE TRACT OUT OF THE JOYCE ANN LEISTER, JANICE BELLE GEBY, MARLYN DUANE KELLY AND CLIFFORD KELLY 23.21 ACRE TRACT, 77.5 ACRE TRACT AND 113.67 ACRE TRACT OFFICIAL RECORD 125, PAGE 653 PARCEL ONE, FIRST TRACT, PARCEL ONE, SECOND TRACT, PARCEL ONE, FOURTH TRACT AND PARCEL TWO AND CLIFFORD E. KELLY, MARLYN D. KELLY, JANICE L. GEBY AND JOYCE ANN LEISTER 1.104 ACRE TRACT OFFICIAL RECORD 178, PAGE 809 SECTION 4, TOWN 3, RANGE 14 BETWEEN THE MIAMI RIVERS SURVEY CITY OF BELLEFONTAINE HARRISON TOWNSHIP LOGAN COUNTY, OHIO



SURVEYED BY:
Jeffrey L. Lee
JEFFREY L. LEE
PROFESSIONAL SURVEYOR 6359
APRIL 8, 2004

2 WORKING DAYS
BEFORE YOU DIG
CALL TOLL FREE 800-362-2764
OHIO UTILITIES PROTECTION SERVICE.

COPYRIGHT 2004 BY:
LEE SURVEYING & MAPPING CO., INC.
117 North Madriver Street
BELLEFONTAINE, OHIO 43311
(937) 593-7335
KSR 0412 1893034 1-1893-1
INDEXED ON MAP 7509 2P

Lee Surveying and Mapping Co., Inc.

Land Surveys • Topography • Subdivisions • Construction Layout

117 N. Madriver St.
Bellefontaine OH 43311



Phone: (937) 593-7335
Fax: (937) 593-7444

PROFESSIONAL SURVEYOR'S AFFIDAVIT

William K. Bruce, being first duly sworn, deposes and says that he is a Registered Professional Surveyor under the laws of the State of Ohio, being Professional Surveyor No. 7437 and that he is making this affidavit for the purposes of correcting the description to certain real estate situated in Harrison Township, Logan County, Ohio, presently owned by Clifford E. Kelly by virtue of a General Warranty Deed recorded in Official Record Volume 718, Page 81 of the Logan County Records of Deeds.

The corrected description being as follows with corrections underlined:

Lying in Section 4, Town 3, Range 14, Between the Miami Rivers Survey, City of Bellefontaine, Harrison Township, Logan County, Ohio.

Being out of the Joyce Ann Leister, Janice Belle Geboy, Marlyn Duane Kelly and Clifford Kelly 23.21 acre tract, 77.5 acre tract, 1.22 acre tract and 113.67 acre tract as deeded and described in Official Record 125, Page 653, Parcel One, First Tract, Parcel One, Second Tract, Parcel One, Third Tract, Parcel One, Fourth Tract and Parcel Two and all of the Clifford E. Kelly, Marlyn D. Kelly, Janice L. Geboy and Joyce Ann Leister 1.104 acre tract as deeded and described in Official Record 178, Page 809 of the Logan County Records of Deeds and being more particularly described as follows:

Beginning at a stone found in a monument box at the southwest corner of Section 4, on the intersection of center-lines of County Highway 32 (60 feet wide) and County Highway 11 (60 feet wide), Station 53+44 (County Highway 32), Logan County Engineers' Field Book 615, Page 56.

THENCE, with the west line of Section 4 and within the right-of-way of County Highway 32, N 3°04'-17"E, a distance of 1300.12 feet to a MAG nail found at the TRUE POINT OF BEGINNING.

THENCE, with the west line of Section 4 and within the right-of-way of County Highway 32, N 3°04'-17"E, a distance of 60.00 feet to a 5/8 inch iron bolt found.

THENCE, with the south lines of the Commissioners of Logan County, Ohio 37 acre tract (Vol. 133, Page 485) and the Board of Logan County Commissioners 1.104 acre tract (O.R. 172, Pg. 660), S 86°49'-26"E, a distance of 1376.79 feet to a 5/8 inch iron rod found, passing a 5/8 inch iron rod set at 29.79 feet.

THENCE, with the east line of the said 1.104 acre tract, N 3°02'-45"E, a distance of 1162.35 feet to a point under water, passing a 5/8 inch iron rod set at 1064.60 feet.

INDEXED ON MAP
7509 3D-1

Lee Surveying and Mapping Co., Inc.

Land Surveys • Topography • Subdivisions • Construction Layout

117 N. Madriver St.
Bellefontaine OH 43311



Phone: (937) 593-7335
Fax: (937) 593-7444

THENCE, with the south lines of the Urbana, Bellefontaine and Northern Railway Co. 3.03 acre tract (Vol. 97, Pg. 414), the following five courses:

S 86°-13'-50"E, a distance of 902.06 feet to a 5/8 inch iron rod found.

With a curve to the left, having a central angle of 10°45'-18", a radius of 5844.65 feet, an arc length of 1097.10 feet, a chord bearing of N 88°-23'-31"E, a chord distance of 1095.49 feet to a 5/8 inch iron rod found.

N 6°-59'-08"W, a distance of 15.00 feet to a 5/8 inch iron rod found.

With a curve to the left, having a central angle of 3°32'-07", a radius of 5829.65 feet, an arc length of 359.70 feet, a chord bearing of N 81°-14'-48"E, a chord distance of 359.64 feet to a 5/8 inch iron rod found.

N 79°-28'-45"E, a distance of 266.86 feet to a 5/8 inch iron rod found.

THENCE, with the west line of the City of Bellefontaine, a Municipal Corporation 8.03 acre tract (Vol. 284, Pg. 84), S 3°-03'-30"W, a distance of 94.82 feet to a 5/8 inch iron rod found.

THENCE, with the north line of the southeast quarter of Section 4 and the south line of the said 8.03 acre tract, S 87°-01'-12"E, a distance of 907.48 feet to a point in Possum Run, passing a 5/8 inch iron rod set at 857.48 feet.

THENCE, with the west line of the City of Bellefontaine original 21.72 acre tract (Vol. 110, Pg. 177), S 42°-18'-48"W, a distance of 149.50 feet to a 5/8 inch iron rod set.

THENCE, with the west line of the said 21.72 acre tract and the north bank of Possum Run, the following two courses:

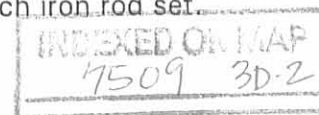
S 25°-28'-48"W, a distance of 320.50 feet to a 5/8 inch iron rod set.

S 54°-15'-48"W, a distance of 842.50 feet to a 5/8 inch iron rod set.

THENCE, continuing with the west line of the said 21.72 acre tract and crossing Possum Run, S 2°-51'-48"W, a distance of 146.50 feet to a 5/8 inch iron rod set.

THENCE, N 87°-11'-20"W, a distance of 1006.46 feet to a 5/8 inch iron rod set.

THENCE, S 18°-24'-17"W, a distance of 280.64 feet to a 5/8 inch iron rod set.



Lee Surveying and Mapping Co., Inc.

Land Surveys • Topography • Subdivisions • Construction Layout

117 N. Madriver St.
Bellefontaine OH 43311




Phone: (937) 593-7335
Fax: (937) 593-7444

THENCE, with an extension of and with the north line of the Karen I. Kerns 29.053 acre tract (O.R. 533, Page 77, Tract II), N 86°-48'-55"W, a distance of 2932.98 feet to the point of beginning, passing a MAG nail found at 2902.76 feet.


Containing 83.153 acres, of which 0.021 acre is within the highway right-of-way.

This affidavit is made in compliance with Revised Code of Ohio Sec. 5301.252 and particularly to show an affidavit of a professional surveyor to reconcile conflicts and ambiguities in descriptions of land in recorded instruments as stated in paragraph B(5) of Section 5301.252. Under Sec. 5301.252(C) the County Recorder shall receive and cause such affidavit to be recorded as deeds are recorded.


SIGNED AND ACKNOWLEDGED IN THE PRESENCE OF:



Alan Westcott



KATHARINE S. STANFORD



William K. Bruce
Professional Surveyor No. 7437



STATE OF OHIO,
LOGAN COUNTY, SS:

BE IT REMEMBERED, that on this 27th day of November, 2007, before me, the subscriber, a Notary Public in and for said County and State, personally came the above named William K. Bruce the maker of the foregoing Affidavit, and acknowledged the signing of the same to be his voluntary act and deed, for the uses and purposes therein mentioned.

IN TESTIMONY WHEREOF, I have subscribed my name and affixed my official seal, on the day and year last aforesaid.



Notary Public

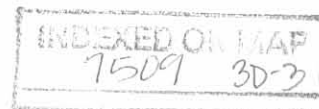


CINDY CUSHMAN
NOTARY PUBLIC
STATE OF OHIO
Comm. Expires
November 13, 2011

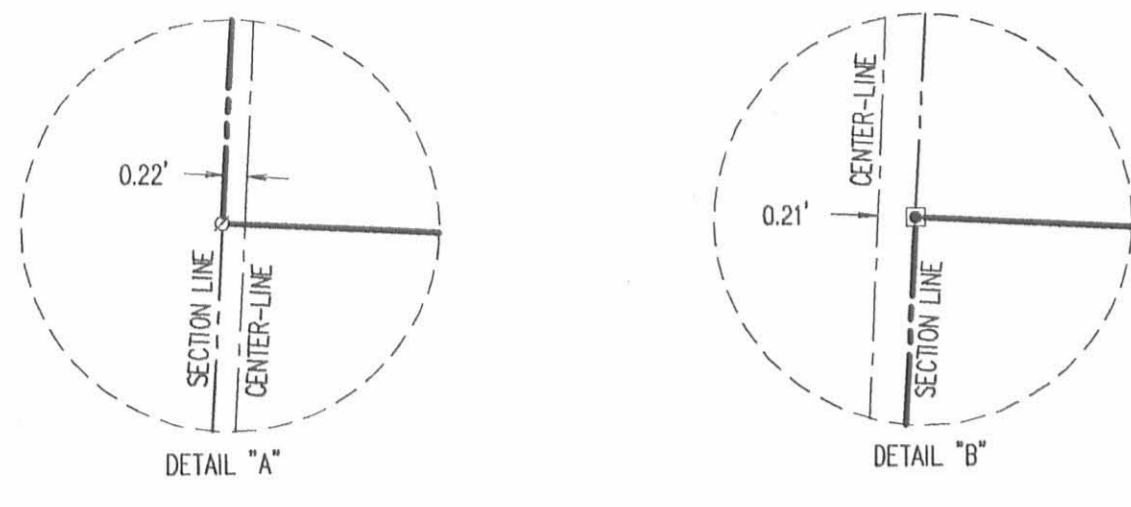
RECORDER:

Please cross reference to Official Record Volume 718, Page 81, in the Abstract of the Deed Records of Logan County, Ohio.

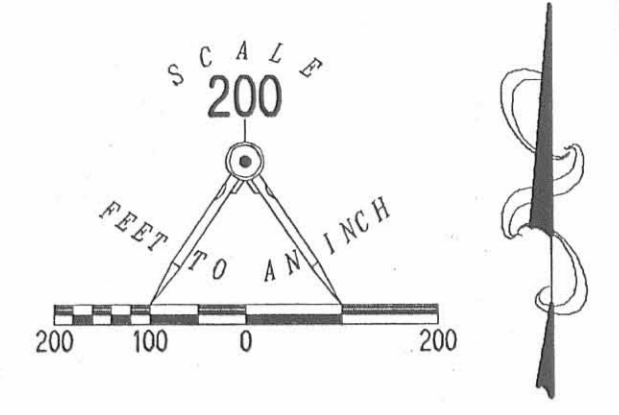
This instrument was prepared by William K. Bruce.



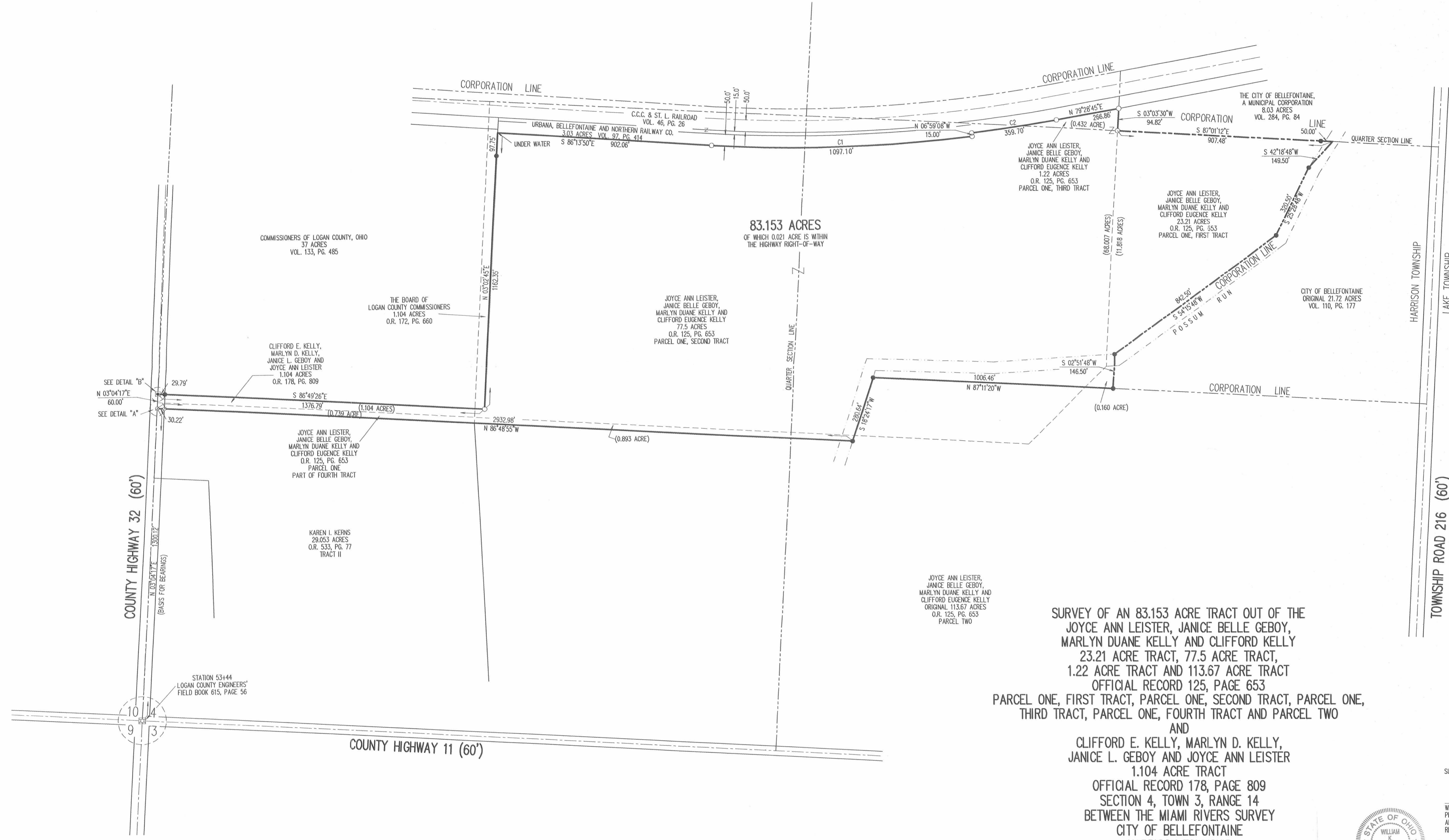
1893034.aff.doc



CURVE	DELTA ANGLE	RADIUS	ARC	TANGENT	CHORD	CHORD BEARING
C 1	10°45'18"	5844.65'	1097.10'	550.17'	1095.49'	N 88°23'31"E
C 2	3°32'07"	5829.65'	359.70'	179.91'	359.64'	N 81°14'48"E



- LEGEND:
- ⊗ MAG NAIL FOUND
 - 5/8 INCH IRON ROD SET
 - 5/8 INCH IRON ROD FOUND
 - ⊠ 5/8 INCH IRON BOLT FOUND
 - ⊞ STONE FOUND IN A MONUMENT BOX



SURVEY OF AN 83.153 ACRE TRACT OUT OF THE JOYCE ANN LEISTER, JANICE BELLE GEBOY, MARLYN DUANE KELLY AND CLIFFORD KELLY 23.21 ACRE TRACT, 77.5 ACRE TRACT, 1.22 ACRE TRACT AND 113.67 ACRE TRACT OFFICIAL RECORD 125, PAGE 653 PARCEL ONE, FIRST TRACT, PARCEL ONE, SECOND TRACT, PARCEL ONE, THIRD TRACT, PARCEL ONE, FOURTH TRACT AND PARCEL TWO AND CLIFFORD E. KELLY, MARLYN D. KELLY, JANICE L. GEBOY AND JOYCE ANN LEISTER 1.104 ACRE TRACT OFFICIAL RECORD 178, PAGE 809 SECTION 4, TOWN 3, RANGE 14 BETWEEN THE MIAMI RIVERS SURVEY CITY OF BELLEFONTAINE HARRISON TOWNSHIP LOGAN COUNTY, OHIO



SURVEYED BY:
William K. Bruce
WILLIAM K. BRUCE
PROFESSIONAL SURVEYOR 7437
APRIL 8, 2004
REVISED NOVEMBER 27, 2007

COPYRIGHT 2004 BY:
LEE SURVEYING & MAPPING CO., INC.
117 North Modriver Street
BELLEFONTAINE, OHIO 43311
(937) 593-7335

INDEXED ON MAP
7-309 2P

ORIGINAL STAMP IN GREEN