

INDEXED ON MAP
7514 1P

I hereby certify that this plat is a correct representation of a survey made by me and that the same shows the improvements as located on the premises. The improvements are entirely within the property lines and there are no encroachments on the premises by improvements on adjoining premises.

Dan L. Dodson
Reg. Surveyor 4270
Bellefontaine, Ohio

o = 5/8" φ Bar Set

REC'D 4-13-06 8AM OUC

Lee Surveying and Mapping Co., Inc.

Land Surveys • Topography • Subdivisions • Construction Layout

117 N. Madriver St.
Bellefontaine OH 43311



Phone: (937) 593-7335
Fax: (937) 593-7444

1975-2005 - 30 YEARS OF EXCELLENCE

**BECK
0.185 ACRE**

Lying in Fractional Section 35, Town 4, Range 14, City of Bellefontaine, Lake Township, Logan County, Ohio.

Being all of the Ann E. Beck 0.18 acre tract as deeded and described in Official Record 432, Page 224 of the Logan County Records of Deeds and being more particularly described as follows:

Beginning at a 1 inch iron bar found in a monument box on the intersection of center-lines of Main Street and Orchard Avenue.

THENCE, with the center-line of Main Street (80 feet wide), N 0°-00'-00"E, a distance of 130.84 feet to a point.

THENCE, N 90°-00'-00"W, a distance of 40.00 feet to a 3/4 inch iron pipe found on the west right-of-way of Main Street at the TRUE POINT OF BEGINNING.

THENCE, with the north line of the Barbara J. Smith, Trustee, 0.18 acre tract (O.R. 526, Pg. 767), N 88°-27'-12"W, a distance of 176.00 feet to a 5/8 inch iron rod set on the east right-of-way of a 16.50 feet wide alley.

THENCE, with the east right-of-way of the 16.50 feet wide alley, N 0°-00'-00"E, a distance of 45.84 feet to a 5/8 inch iron rod set.

THENCE, with the south line of the L.P.Z. Construction Co., Inc., 0.18 acre tract (Vol. 333, Pg. 375, Tract I), S 88°-27'-12"E, a distance of 176.00 feet to a 5/8 inch iron rod found on the west right-of-way of Main Street.

THENCE, with the west right-of-way of Main Street, S 0°-00'-00"W, a distance of 45.84 feet to the point of beginning.

Containing 0.185 acre.

The basis for bearings is the center-line of Main Street at the intersection of Orchard Avenue, being N 0°-00'-00"E, and all other bearings are from angles and distances measured in a field survey by Lee Surveying and Mapping Co., Inc. on April 7, 2006.

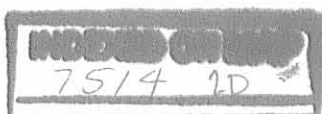


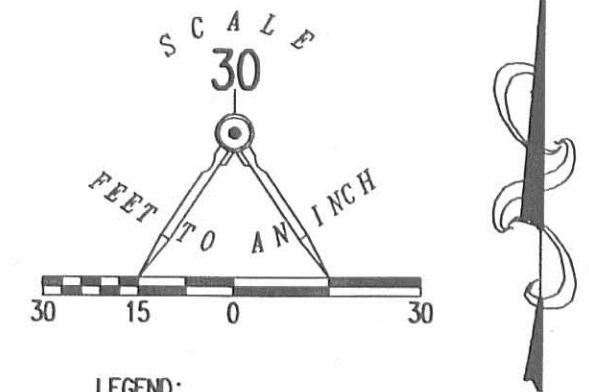
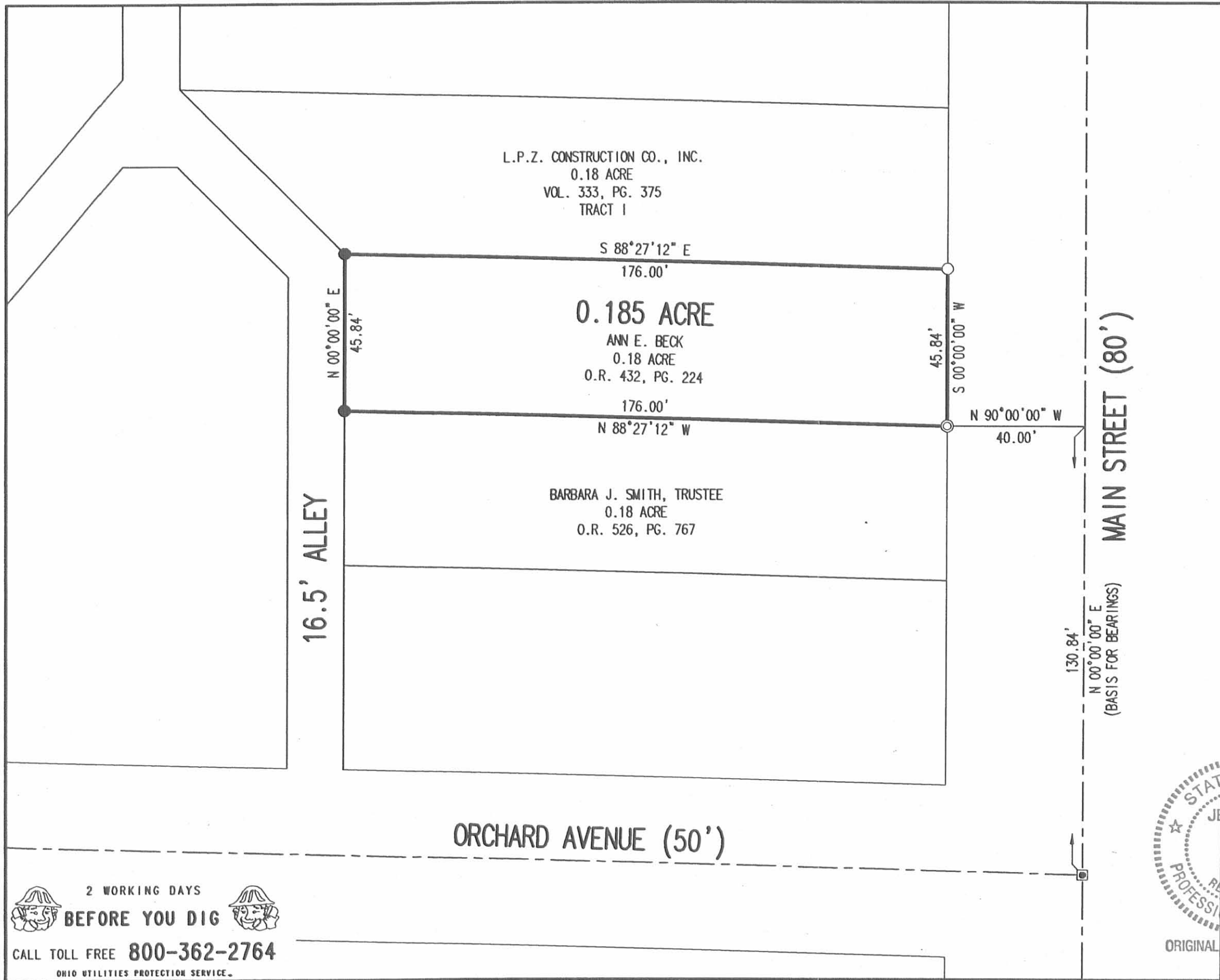
ORIGINAL STAMP IN GREEN

Description prepared by:

Jeffrey I. Lee
Professional Surveyor 6359
April 10, 2006


4209036





- LEGEND:
- 1 INCH IRON BAR FOUND IN A MONUMENT BOX
 - ⊙ 3/4 INCH IRON PIPE FOUND
 - 5/8 INCH IRON ROD FOUND
 - 5/8 INCH IRON ROD SET

BOUNDARY SURVEY OF THE
 ANN E. BECK
 0.18 ACRE TRACT
 OFFICIAL RECORD 432, PAGE 224
 FRACTIONAL SECTION 35,
 TOWN 4, RANGE 14
 CITY OF BELLEFONTAINE
 LAKE TOWNSHIP
 LOGAN COUNTY, OHIO

SURVEYED BY:

 JEFFREY I. LEE
 PROFESSIONAL SURVEYOR 6359
 APRIL 7, 2006



ORIGINAL STAMP IN GREEN

COPYRIGHT 2006 BY:
 LEE SURVEYING & MAPPING CO., INC.
 117 North Madriver Street
 BELLEFONTAINE, OHIO 43311
 (937) 593-7335
 KSR D0406 4209036 L-4209-3

2 WORKING DAYS
BEFORE YOU DIG
 CALL TOLL FREE **800-362-2764**
 OHIO UTILITIES PROTECTION SERVICE.

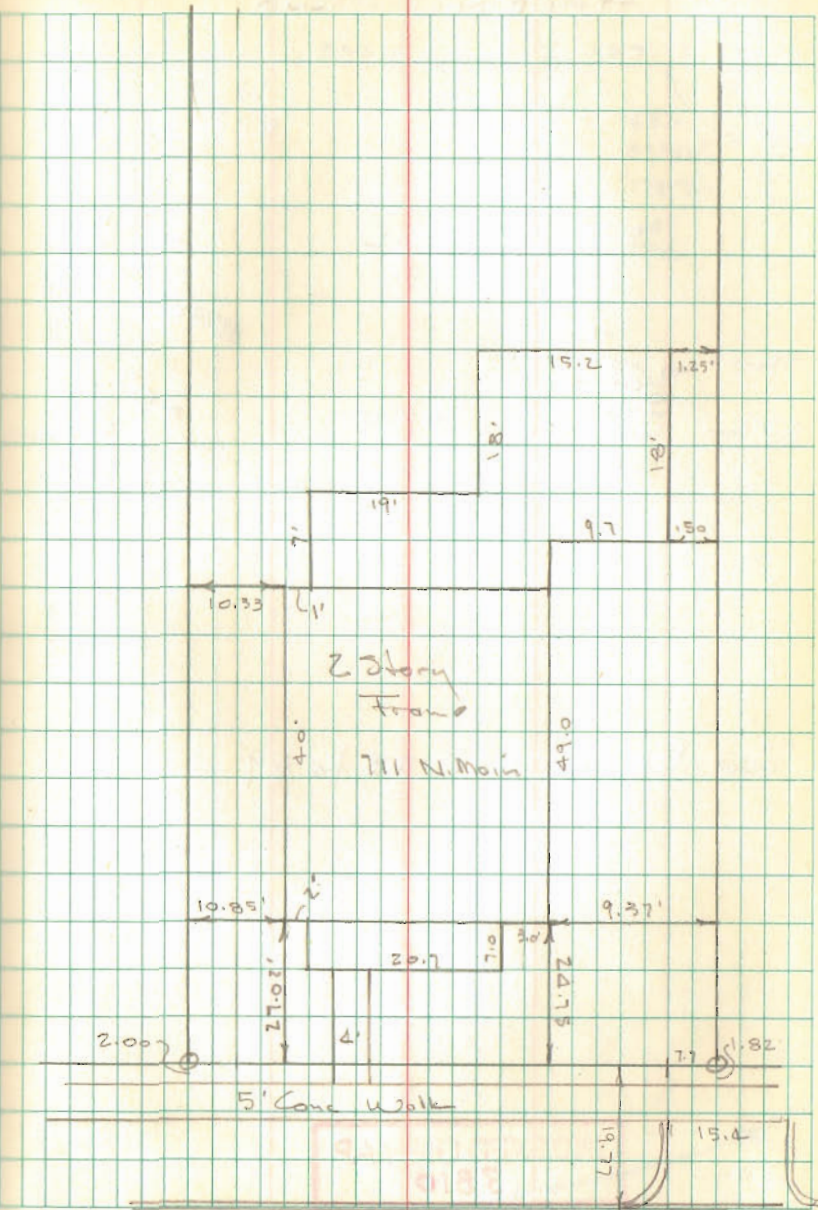
INDEXED ON MAP
 7514 2P

LEVAN SURVEY CONTO

Dodson
Wh. flow

7 May 66

58



INDEXED ON MAP
7514