

Lee Surveying and Mapping Co., Inc.

Land Surveys • Topography • Subdivisions • Construction Layout

117 N. Madriver St.
Bellefontaine OH 43311



Phone: (937) 593-7335
Fax: (937) 593-7444

PETTY 0.270 ACRE

Lying in Section 35, Town 4, Range 14, City of Bellefontaine, Lake Township, Logan County, Ohio.

Being all of the Jayna Petty 0.240 acre tract as deeded and described in Official Record 886, Page 76 of the Logan County Records of Deeds and being more particularly described as follows:

Commencing on a 1 inch iron bar found in a monument box on the intersection of center-lines of Elm Street and Sandusky Avenue.

THENCE, with the center-line of Sandusky Avenue (60 feet wide), N 85°-38'-00"W, a distance of 70.00 feet to a point.

THENCE, N 3°-59'-10"E, a distance of 30.00 feet to a MAG nail set in a concrete sidewalk on the north right-of-way of Sandusky Street at the TRUE POINT OF BEGINNING.

THENCE, with the north right-of-way of Sandusky Street, N 85°-38'-00"W, a distance of 55.00 feet to a MAG nail set in a concrete sidewalk.

THENCE, with the east line of the Steven L. Buchenroth 0.14 acre tract (O.R. 793, Pg. 722, Tract II), N 3°-59'-10"E, a distance of 219.80 feet to a 5/8 inch iron rod set on the south right-of-way of a 16.5 feet wide alley.

THENCE, with the south right-of-way of a 16.5 feet wide alley, S 85°-38'-00"E, a distance of 55.00 feet to a 5/8 inch iron rod set.

THENCE, with the west line of the Paul D. Esh 0.0775 acre tract (O.R. 293, Pg. 28), S 3°-59'-10"W, a distance of 61.20 feet to a 5/8 inch iron rod set.

THENCE, with the lines of the Terence A. Brown 0.09 acre tract (O.R. 524, Pg. 168), the following three courses:

N 85°-38'-00"W, a distance of 5.00 feet to a 5/8 inch iron rod set.

S 3°-59'-10"W, a distance of 67.00 feet to a 5/8 inch iron rod set.

S 85°-38'-00"E, a distance of 5.00 feet to a 5/8 inch iron rod set.

THENCE, with the west line of the Jon E. Wackerman 0.12 acre tract (O.R. 874, Pg. 160), S 3°-59'-10"W, a distance of 91.60 feet to the point of beginning.

Containing 0.270 acre.

The basis for bearings is the center-line of Sandusky Avenue, being S 85°-38'-00"E, and all other bearings are from angles and distances measured in a field survey by Lee Surveying and Mapping Co., Inc. on September 25, 2007.



ORIGINAL STAMP IN GREEN

Description prepared by:

William K. Bruce
Professional Surveyor 7437
September 27, 2007

4521097



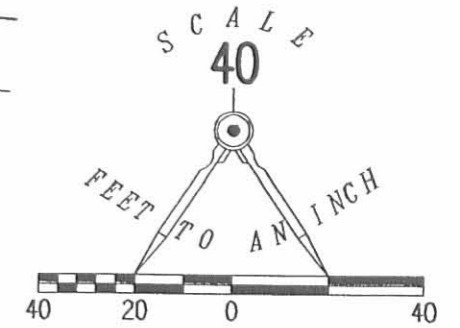
REC'D 10-1-07 SMM/ok

2 WORKING DAYS
BEFORE YOU DIG
CALL TOLL FREE 800-362-2764
OHIO UTILITIES PROTECTION SERVICE.

BROWN AVENUE (50')

BROWN AVENUE (30')

16.5' ALLEY



- LEGEND:
- STONE FOUND IN MONUMENT BOX
 - 1 INCH IRON BAR FOUND IN MONUMENT BOX
 - MAG NAIL SET IN CONCRETE SIDEWALK
 - 5/8 INCH IRON ROD SET
 - 5/8 INCH IRON ROD FOUND

PRATT STREET

STEVEN L. BUCHENROTH
0.14 ACRE
N 03°59'10" E O.R. 793, PG. 722, TRACT II
219.80'

0.270 ACRE

JAYNA PETTY
0.240 ACRE
O.R. 886, PG. 76

JON E. WACKERMAN
0.12 ACRE
O.R. 874, PG. 160

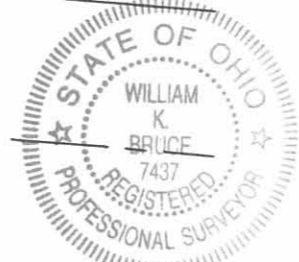
TERENCE A. BROWN
0.09 ACRE
O.R. 524, PG. 168

PAUL D. ESH
0.0775 ACRE
O.R. 293, PG. 28

SANDUSKY AVENUE (60')

607.00'
S 85°38'00" E
(BASIS FOR BEARINGS)

ELM STREET (30')



ORIGINAL STAMP IN GREEN

RETRACEMENT SURVEY OF THE
JAYNA PETTY
0.240 ACRE TRACT
OFFICIAL RECORD 886, PAGE 76
SECTION 35, TOWN 4, RANGE 14
CITY OF BELLEFONTAINE
LAKE TOWNSHIP
LOGAN COUNTY, OHIO

SURVEYED BY:

William K. Bruce
WILLIAM K. BRUCE
PROFESSIONAL SURVEYOR 7437
SEPTEMBER 25, 2007

COPYRIGHT 2007 BY:
LEE SURVEYING & MAPPING CO., INC.
117 North Madriver Street
BELLEFONTAINE, OHIO 43311
(937) 593-7335
surveys@lsminc.us
KSS D0907 4521097 L-4521-3

INDEXED ON MAP
7517 IP

HUTCHINS SURVEY
Sec.35 T-4 R-14
BELLEFONTAINE, OHIO
April 12, 1969

TRACT 1

The following described real estate situated in the City of Bellefontaine, Lake Township, Logan County, Ohio and being part of Section 35, Town 4, Range 14 of the Between the Miami Rivers Survey and more particularly described as follows:

Beginning at an iron bar at the intersection of the north line of Sandusky Avenue and the west line of Elm Street; thence with the north line of Sandusky Avenue N.85° 38'W. 55.00 feet to an iron bar at the southeast corner of Frank D. Hutchins' 0.25 acre tract; thence with the east line of said tract N.4° 27'E. 91.60 feet to an iron bar; thence S.85° 38'E. 55.0 feet to a chisel mark on concrete walk in the west line of Elm Street; thence with the west line of said Street, being parallel to and 15.00 feet west of the centerline thereof, S.4° 27'W. 91.60 feet to the place of beginning.

Containing 0.12 of an acre more or less.

INDEXED ON MAP
7517 2D-1

HUTCHINS SURVEY
Sec.35 T-4 R-14
BELLEFONTAINE, OHIO
April 12, 1969

TRACT2

The following described real estate situated in the City of Bellefontaine, Lake Township, Logan County, Ohio and being part of Section 35, Town 4, Range 14 of the Between the Miami Rivers Survey and more particularly described as follows:

Commencing at an iron bar at the intersection of the north line of Sandusky Avenue and the west line of Elm Street; thence with the west line of Elm Street N.4° 27'E. 91.60 feet to a chisel mark on concrete walk, said mark being the beginning point of this description; thence N.85° 38'W. 55.0 feet to an iron bar in the east line of Frank D. Hutchins' 0.25 acre tract; thence N.85° 38'W. 5.00 feet to a point; thence N.4° 27'E. 67.00 feet to an iron bar; thence S.85° 38'E. 5.00 feet to an iron bar in the east line of said Hutchins' 0.25 acre tract; thence S.85° 38'E. 55.00 feet to an iron bar in the west line of Elm Street; thence with the west line of said Street, being parallel to and 15.00 feet west of the centerline thereof, S.4° 27'W. 67.00 feet to the place of beginning.

Containing 0.09 of an acre more or less of which 0.01 of an acre is out of Frank D. Hutchins 0.25 acre tract.

INDEXED ON MAP
7517 2D2

HUTCHINS SURVEY
Sec.35 T-4 R-14
BELLEFONTAINE, OHIO
April 12, 1969

TRACT 3

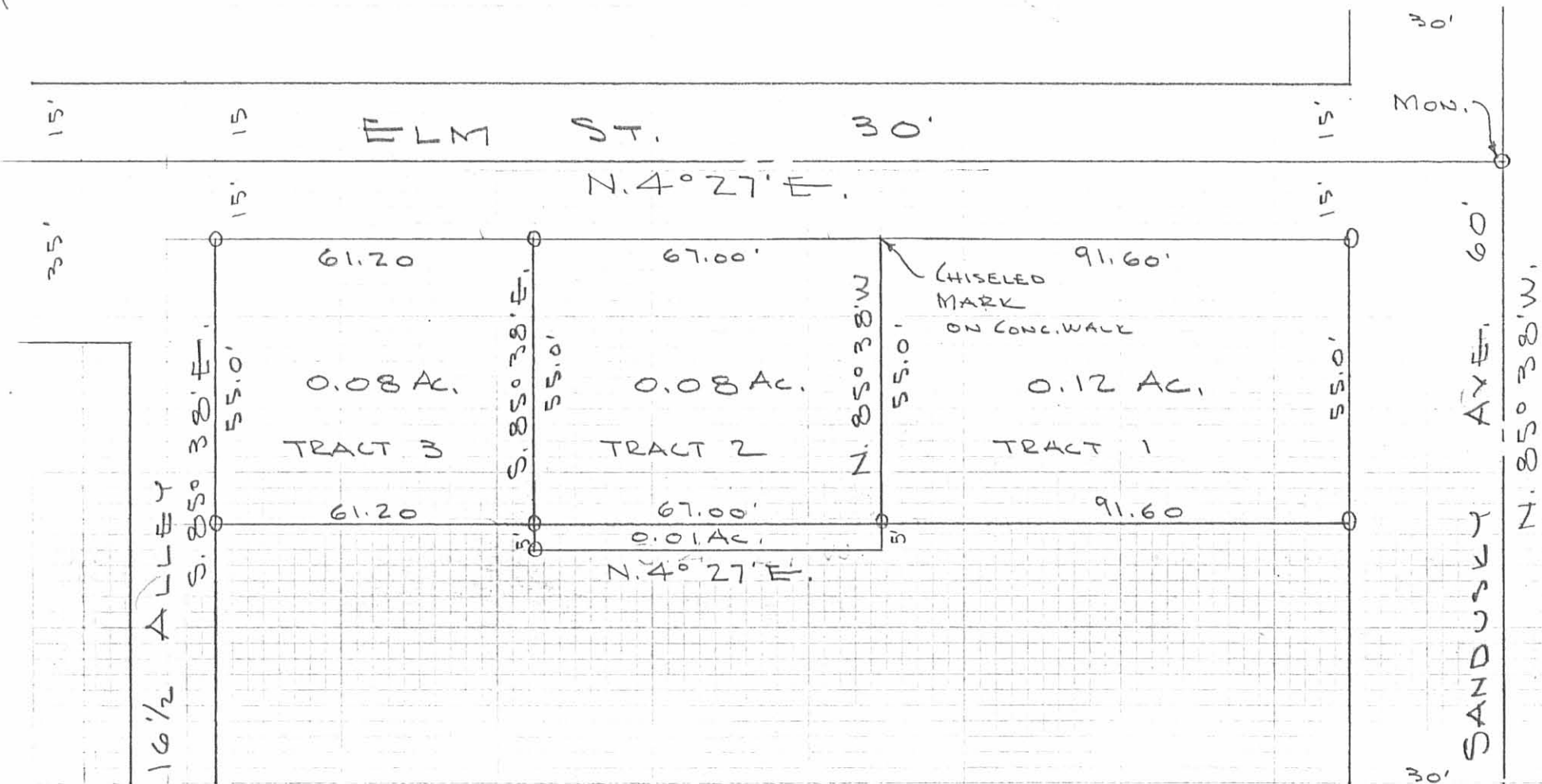
The following described real estate situated in the City of Bellefontaine, Lake Township, Logan County, Ohio and being part of Section 35, Town 4, Range 14 of the Between the Miami Rivers Survey and more particularly described as follows:

Commencing at an iron bar at the intersection of the north line of Sandusky Avenue and the west line of Elm Street; thence with the west line of Elm Street N.4° 27'E. 158.6 feet to an iron bar, said iron bar being the beginning point of this description; thence N.85° 38'W. 55.00 feet to an iron bar in the east line of Frank D. Hutchins' 0.25 acre tract; thence with said east line N.4° 27'E. 61.20 feet to an iron bar in the south line of a 16½ foot alley; thence with the south line of said alley S.85° 38'E. 55.00 feet to an iron bar in the west line of Elm Street; thence with the west line of said Street, being parallel to and 15.00 feet west of the centerline thereof, S.4° 27'W. 61.20 feet to the place of beginning.

Containing 0.08 of an acre more or less,

INDEXED ON MAP

7517 2D:3



HUTCHINS SURVEY
 SEC. 35 T-4 R-14
 BELLEFONTAINE, O.
 APRIL 12, 1969
 SCALE 1" = 30'
 0 = 5/8" BAR SET

DAN L. DODSON
 REG. SURVEYOR 4270
 BELLEFONTAINE, O.
 F.B. 16/15

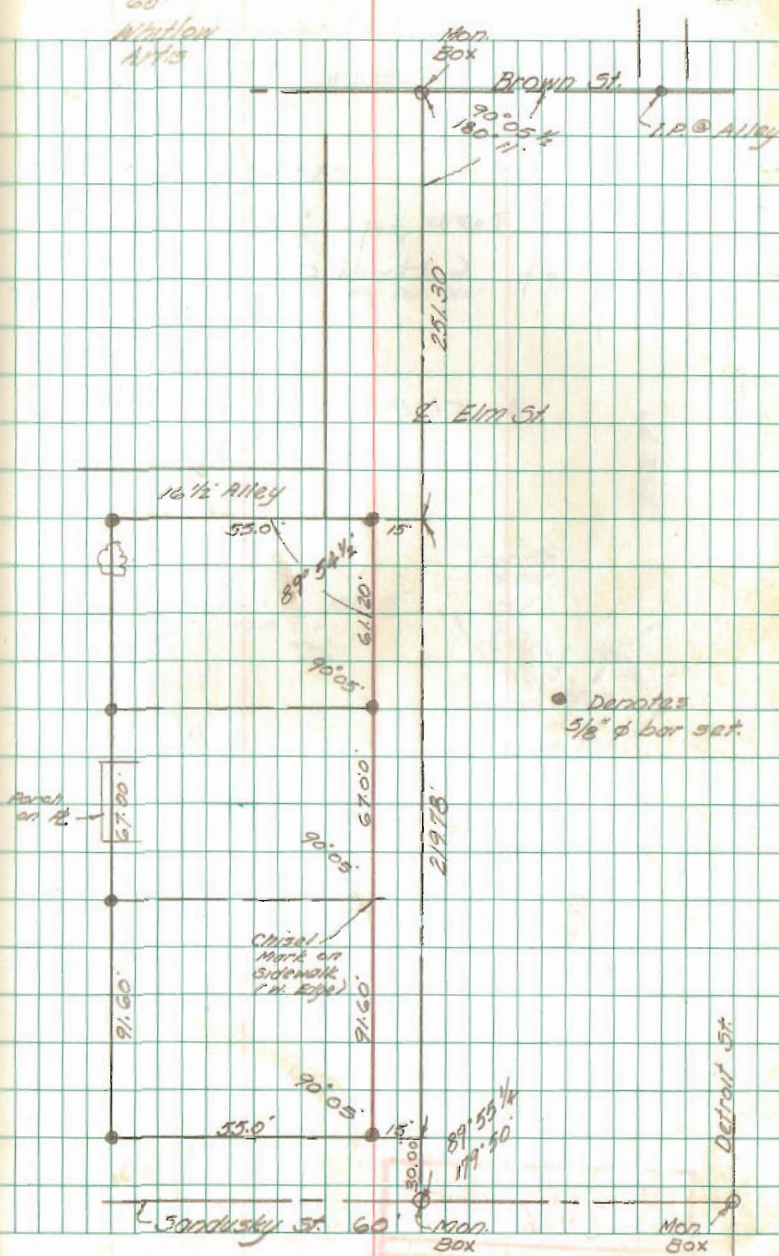
INDEXED ON MAP
 7517
 24

4-12-69

60°

Willow
Arts

15



INDEXED ON MAP
7517

256
0330
11/11