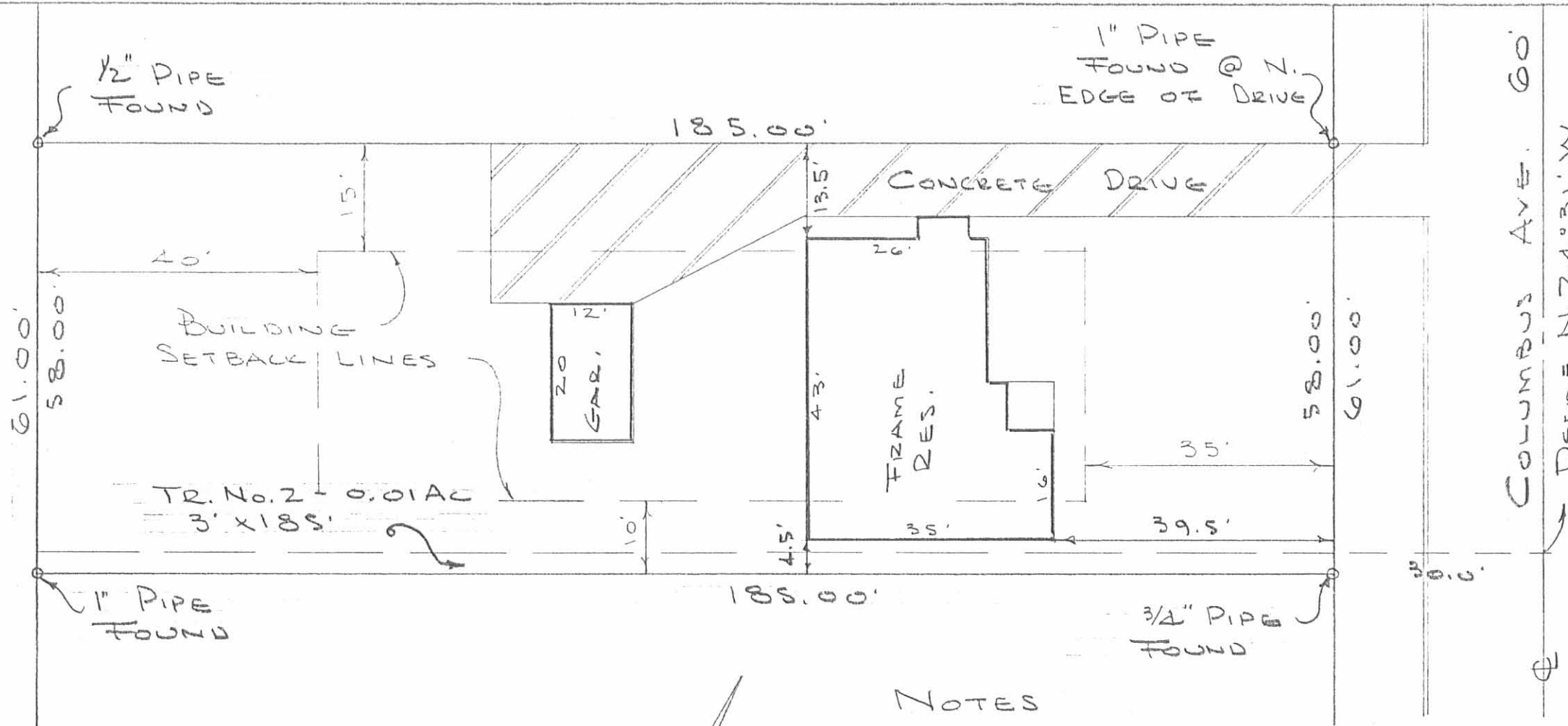


RATH SURVEY
 E. COLUMBUS AVE.
 BELLEFONTAINE, OHIO
 SEPT. 3, 1970
 SCALE 1" = 30'

INDEXED ON MAP
 7520 IP

REF:
 CITY F.B. 248 PG. 13

DAN L. DODSON
 REG. SURVEYOR 4270
 BELLEFONTAINE, OHIO



COLUMBUS AVE. 60'
 DEED = N. 24° 31' W.
 302.5 TO IRON @ E
 RESERVE 0.12 R.D.

INDEXED ON MAP
 7520 ZP

NOTES

ENCROACHMENT: CONC. DRIVE - AVG. DIST = 0.10'

BUILDING SETBACK LINES DO NOT APPLY
 HOUSE WAS BUILT PRIOR TO ADOPTION OF
 ZONING REG'S. IN MAR. 1970

KABELKA SURVEY
 746 EAST COLUMBUS AVENUE
 V.M.S. 4990
 BELLEFONTAINE, OHIO
 AUGUST 8, 1981
 SCALE 1" = 20'

DAN L. DODSON
 REG SURVEYOR 4270
 BELLEFONTAINE, OHIO