

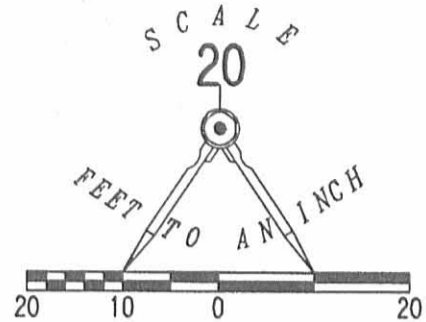
INDEXED ON MAP
7523 IP

SURVEY OF LOT 3707
 BELLEFONTAINE, OHIO
 JUNE 23, 1969
 SCALE 1" = 20'

DAN L. DOOSON
 REG. SURVEYOR 4270
 BELLEFONTAINE, OH

REC'D 2-14-06 SWM OK

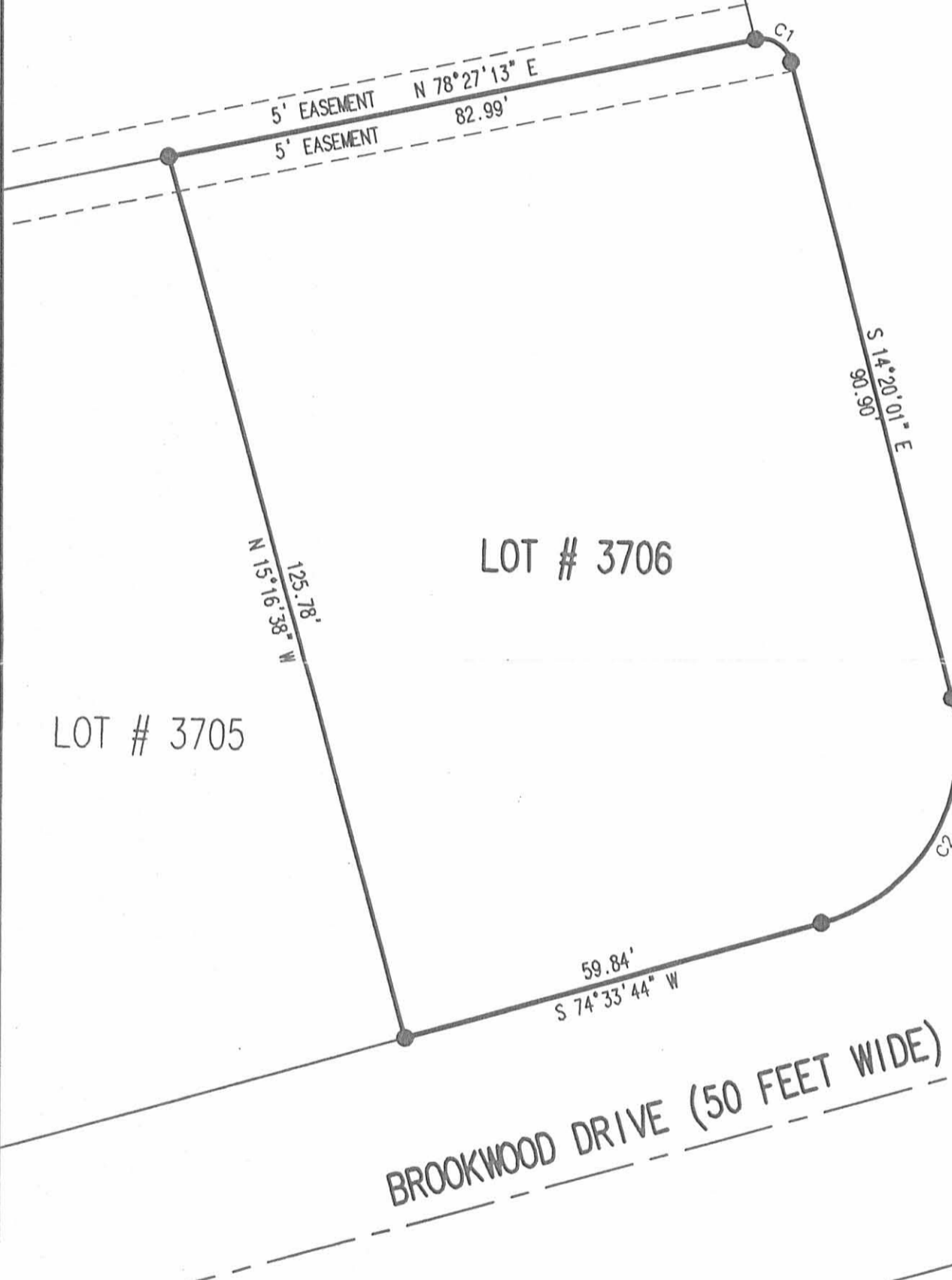
CURVE	DELTA	RADIUS	ARC LENGTH	CHORD BEARING	CHORD LENGTH
C1	92°48'07"	4.00'	6.48'	S 57°56'53" E	5.79'
C2	91°05'17"	25.00'	39.74'	S 30°06'22" W	35.69'



LEGEND

● 5/8 INCH IRON ROD SET

LOT # 3709



A RETRACEMENT SURVEY OF LOT # 3706
 BROOKWOOD ADDITION # 1
 PLAT CABINET A, SLIDE 295
 CITY OF BELLEFONTINE
 LAKE TOWNSHIP
 LOGAN COUNTY, OHIO



SURVEYED BY:

JEFFREY I. LEE
 PROFESSIONAL SURVEYOR 6359
 FEBRUARY 9, 2006

ORIGINAL STAMP IN GREEN

2 WORKING DAYS
BEFORE YOU DIG
 CALL TOLL FREE 800-362-2764
 OHIO UTILITIES PROTECTION SERVICE

INDEXED ON MAP
 7523 2P

COPYRIGHT 2006 BY:
 LEE SURVEYING & MAPPING CO., INC
 117 North Madriver Street
 BELLEFONTAINE, OHIO 43311
 (937) 593-7335

ADW D0206 4186026 4186026-3

LOT 3707

BELLEFONTAINE, OHIO
FOR
WAYNE WOLFORD

- A = $\frac{1}{2}$ " Bar Found @ Gr. surface
 B = " " " 6" deck
 C = P-K nail in Asphalt drive Found
 D = $\frac{3}{4}$ " pipe Found @ P.I.
 E = $\frac{5}{8}$ " Bar Set
 F = $\frac{3}{4}$ " pipe Set - .3' ± S.E. of Power pole

Found "C" & D, set @ "C" turned $90^{\circ}00'$
 from D, meas 110.0 set F

Set @ "D" turned $90^{\circ}00'$ from "C", meas
 113.6 set E

INDEXED ON MAP
7523

Dobson
Nichols5/3/69
70°

03

