

EXHIBIT "A"

PROPOSED ANNEXATION

Lying adjacent to the present south corporation line of the City of Bellefontaine, Ohio and being in Section 33, T-4, R-14 of Lake Township and Sections 26 and 32, T-4, R-14 of Liberty Township, Logan County, Ohio and encompassing the following parcels of property:

1. Clark LeVan, 3.07 acres, Volume 329, Page 346.
2. Evelyn Snapp, 5.04 acres, Volume 383, Page 779.
3. Charles Engle, 1.00 acre, Volume 372, Page 115.
4. Robert Pool, 41.031 acres, Volume 390, Page 367.
5. State of Ohio, 7.289 acres, Volume 206, Page 2 and Volume 399, Page 249.
6. Gene P. Lantz, 48.32 acres, Volume 323, Page 242.
7. Wilson Anderson, 22.567 acres (Part of 72.17 acres) Volume 390, Page 818.
8. Maefreda Bazzle, 0.90 acre, Volume 402, Page 561.
9. Fred Allen, 2.359 acres, Volume 393, Page 631 and Volume 400, Page 589.
10. Thomas and Marker Construction Company, 17.95 acres, Volume 331, Page 332.

The boundary of the above combined properties being described as follows:

Beginning at a point on the present south corporation line. This point being the intersection of the center-lines of Township Road 200 and U.S. Route 68, being on the south line of Lake Township and marking the southwest corner of the said Charles Engle 1.00 acre.

THENCE, with the center-line of U.S. Route 68, N 3⁰-25' W, 593.34 feet to the northwest corner of the said Clark LeVan 3.07 acres.

THENCE, S 86⁰-12' E, 666.6 feet to the LeVan northeast corner.

THENCE, S 4⁰-00' E, 593.30 feet to the southeast corner of the said Snapp 5.04 acres on the south line of Lake Township and being on the north line of the said Robert Pool 41.031 acres.

THENCE, with the Lake-Liberty Township line, S 86⁰-00' E, a distance of 1962.8 feet to the northeast corner of said 41.031 acres.

THENCE, with the east line of said 41.031 acres and the east line of the said Gene Lantz 48.32 acres, S 4⁰-10' E, 1626.24 feet.

THENCE, with the south line of said 48.32 acres and through the Wilson Anderson 72.17 acre tract, N 86⁰-00' W, a distance of 3897.0 feet, passing the center-line of U.S. Route 68, at 2640 feet.

THENCE, with the west line of the said Anderson property and the west line of the Thomas and Marker Construction Company, N 0⁰-50' E, a distance of 1612.20 feet to the center-line of Township Road 200, (Allen Road). This being on the south line of the present corporation line; the Lake -Liberty Township line and the north line of Section 32.

THENCE, with the said township line, S 86⁰-00' E, a distance of 1114.7 feet to the point of beginning.

Containing 149.526 acres, of which 9.11 acres are in Section 33, T-4, R-14, Lake Township; 53.08 acres are in Section 26, T-4, R-14, Liberty Township and 87.336 acres are in Section 32, T-4, R-14, Liberty Township.

Prepared by:

Clayton M. Lee

Clayton M. Lee
Registered Professional Surveyor No. 6181
March 4, 1986

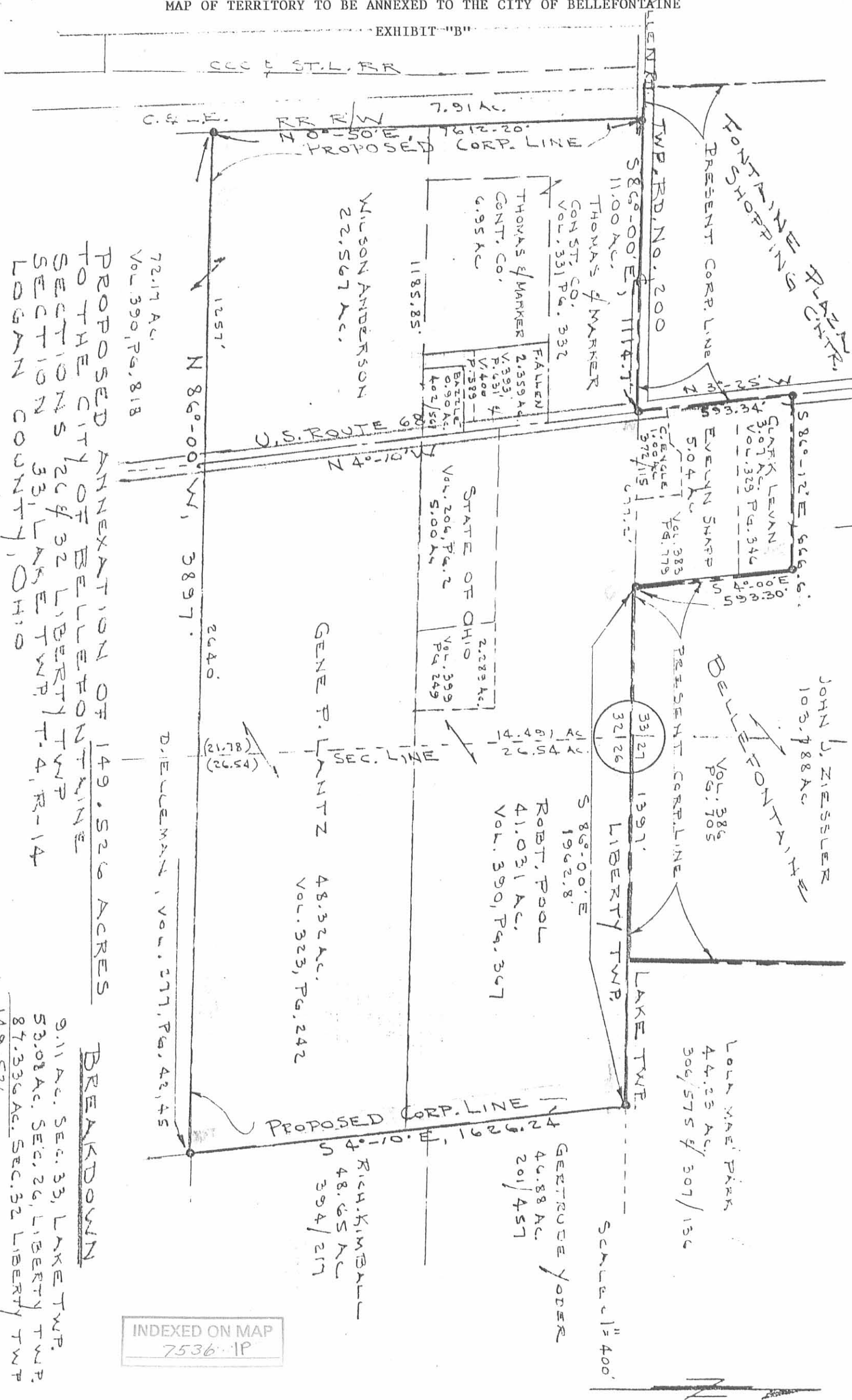
DESCRIPTION CHECKED
LOGAN CO. ENGINEER
BY *E. Pruett* 4-28-86

INDEXED ON MAP
7536 1D



MAP OF TERRITORY TO BE ANNEXED TO THE CITY OF BELLEFONTAINE

EXHIBIT "B"



PROPOSED ANNEXATION OF 149,526 ACRES TO THE CITY OF BELLEFONTAINE

BREAKDOWN

- 9.11 Ac. SEC. 33, LAKE TWP.
- 53.08 Ac. SEC. 26, LIBERTY TWP.
- 87.336 Ac. SEC. 32 LIBERTY TWP
- 149.526

INDEXED ON MAP
7536-1P