

INDEXED ON MAP
7664 IP

1634

Alley

187.50'

15.00'

50.00'

1633

Storage Shed

1 Car Garage

Concrete

Wood Deck

Addition

2 Story Frame House

"540"

Porch

Walk

50.00'

Concrete

Driveway

Sidewalk

Vacated

187.50'

1632

N

● - 5/8" x 30" Rebars Fd.

5.0'

S. DETROIT ST.

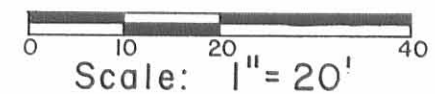
To whom it may concern:

I hereby certify that I, Daniel E. Gilbert, P.S., Reg. Sur. No. 5402, did locate the above improvements on Lot No. 1633 and that I found no physical encroachments.

Daniel E. Gilbert

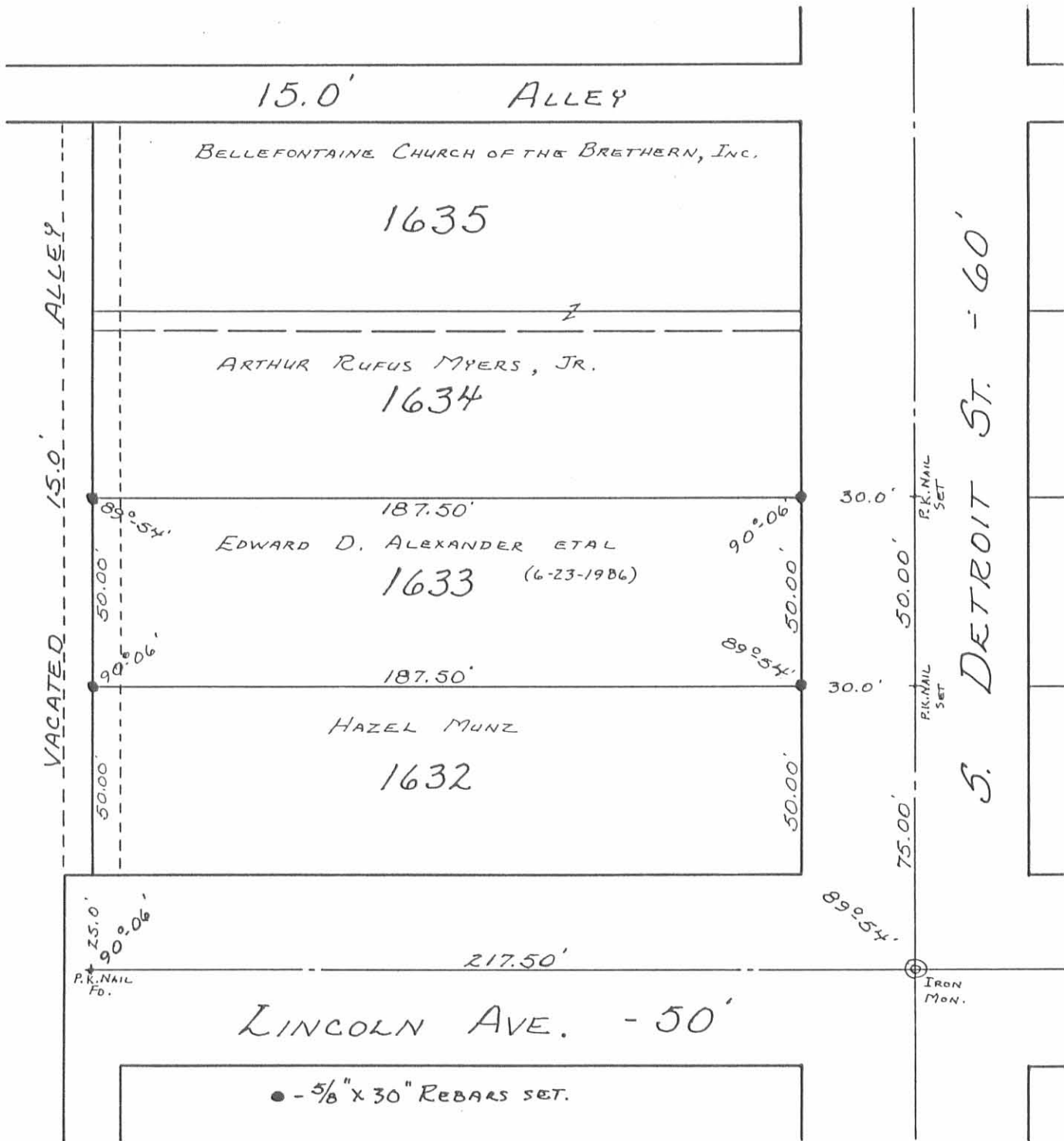
Daniel E. Gilbert, P.S.
Reg. Sur. No. 5402
400 N. Park St.
Bellefontaine, Ohio
43311

Alexander Survey
Lot No. 1633
City of Bellefontaine
Lake Township
Logan County, Ohio
May 17, 1991



Scale: 1" = 20'

087-023A



INDEXED ON MAP
7664 2P



Daniel E. Gilbert
 DANIEL E. GILBERT, P.S.,
 REG. SUR. NO. 5402
 400 N. PARK ST.
 BELLEFONTAINE, OHIO
 43311

ALEXANDER SURVEY
 Lot No. 1633
 CITY OF BELLEFONTAINE
 LAKE TOWNSHIP
 LOGAN COUNTY, OHIO
 AUGUST 6, 1987
 SCALE: 1" = 40'