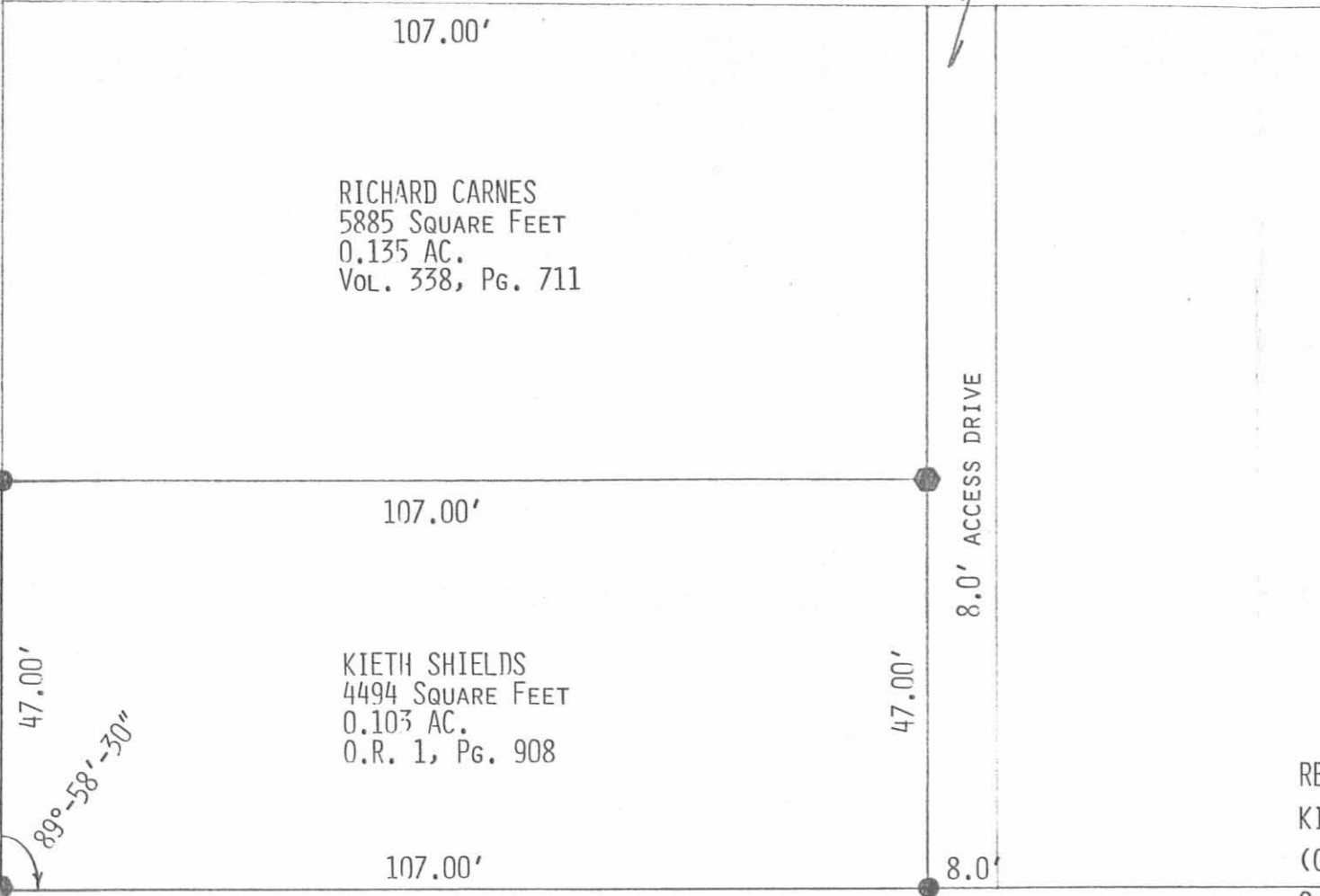


IRENE HARE  
0.29 AC.  
Vol. 381, Pg. 603

RICHARD CARNES  
5885 SQUARE FEET  
0.135 AC.  
Vol. 338, Pg. 711

KIETH SHIELDS  
4494 SQUARE FEET  
0.103 AC.  
O.R. 1, Pg. 908

PARK STREET (30')



WATSON WAY - 16.5' ALLEY

SCALE 1" = 20'

LEGEND

- 1/2" I. ROD SET
- ◆ RR SPIKE SET

RETRACEMENT SURVEY OF THE  
KIETH SHIELDS 0.103 ACRE TRACT  
(O.R. 1, PAGE 908)  
SECTION 35, T-4, R-14  
CITY OF BELLEFONTAINE  
LAKE TOWNSHIP  
LOGAN COUNTY, OHIO  
JANUARY 2, 1990

INDEXED ON MAP  
7981 IP

SURVEYED BY:

*Jeffrey I. Lee*  
JEFFREY I. LEE  
PROFESSIONAL SURVEYOR No. 6359



ORIGINAL STAMP IN GREEN