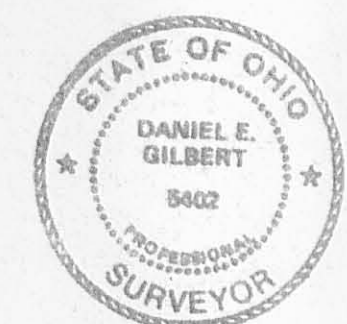


- References:
- Abraham Kenner - Deed Vol. 378 P. 234 (8-9-1978).
 - Garfield Avenue Survey - City Eng. F.B. No. 184 P. 47-55.
 - Keller, Gebby & Kinnan Survey - City Eng. F.B. No. 187 P. 113-115.
 - Webster and Core Survey - City Eng. F.B. No. 225 P. 5-9.



ABRAHAM KENNER SURVEY (Per. Par. No. 17-091-11-11-013.000)	
Section No. 35 T.4 R.14 B.M.R.S., Lake Township, City of Bellefontaine, Logan County, Ohio.	
SCALE: 1" = 20'	APPROVED BY: _____
DATE: 4-18-1991	DRAWN BY: DEG
INDEXED ON MAP 8114 1P	
DRAWING NUMBER: 091-014	
Daniel E. Gilbert Daniel E. Gilbert, P.S. Reg. Sur. No. 5402	

Tudor Electric Supply, Inc.
to
Abraham Kenner Survey

The following described real estate situated in the City of Bellefontaine, Township of Lake, County of Logan, State of Ohio and being a part of Section No. 35, Town 4, Range 14, Between the Miami Rivers Survey and being out of the northwest corner to a 0.130 Acre tract in the name of Tudor Electric Supply, Inc. as recorded in Deed Volume No. 345 Page 975 (4-2-1973) and being more particularly described as follows:

Beginning at a P. K. Nail found at the northwest corner to Tudor Electric Supply, Inc. present 0.130 Acre tract and the north-east corner to Abraham Kenner's present 0.095 Acre tract as recorded in Deed Volume No. 378 Page 234 (8-9-1978) and being in the centerline of Garfield Avenue (60.00 feet wide);

Thence with the centerline of Garfield Avenue and the north line of said 0.130 Acre tract, S. 63°00'00" E. 21.18 feet to a point, (Note: The centerline of Garfield Avenue is the Basis of Bearing for this survey - S. 63°00'00" E.);

Thence with a line parallel with the west line of said 0.130 Acre tract, S. 7°49'24" W. 66.80 feet to a 5/8" x 30" Rebar set, passing through a 5/8" x 30" Rebar set at the south side of Garfield Avenue at 31.76 feet;

Thence N. 82°10'36" W. 20.00 feet to a 5/8" x 30" Rebar set in the west line of said 0.130 Acre tract and the east line of Kenner's 0.095 Acre tract;

Thence with the line between Tudor and Kenner, N. 7°49'24" E. 73.76 feet to the place of beginning, passing through a 5/8" x 30" Rebar found at 42.00 feet, containing 1,405.60 square feet or 0.032 Acres, more or less.

Of the above described tract, there is 635.20 square feet or 0.014 Acre in the right of way of Garfield Avenue.

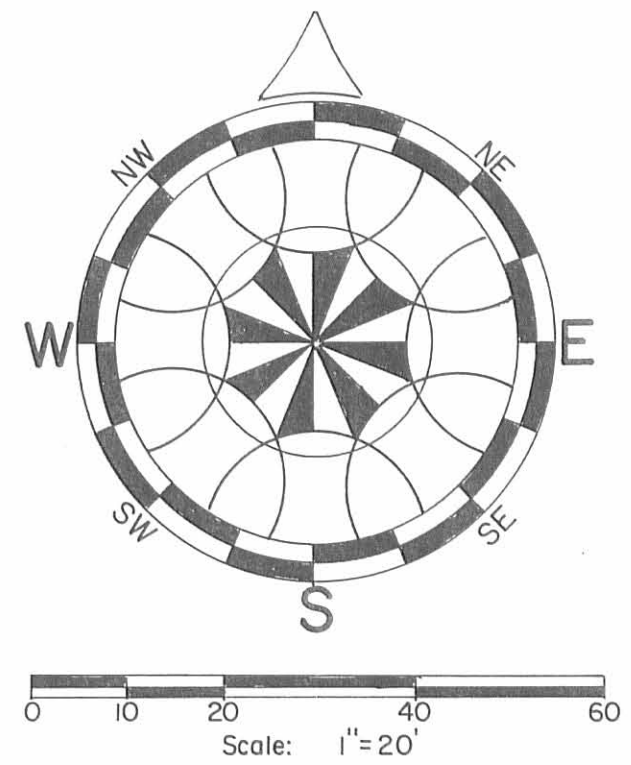
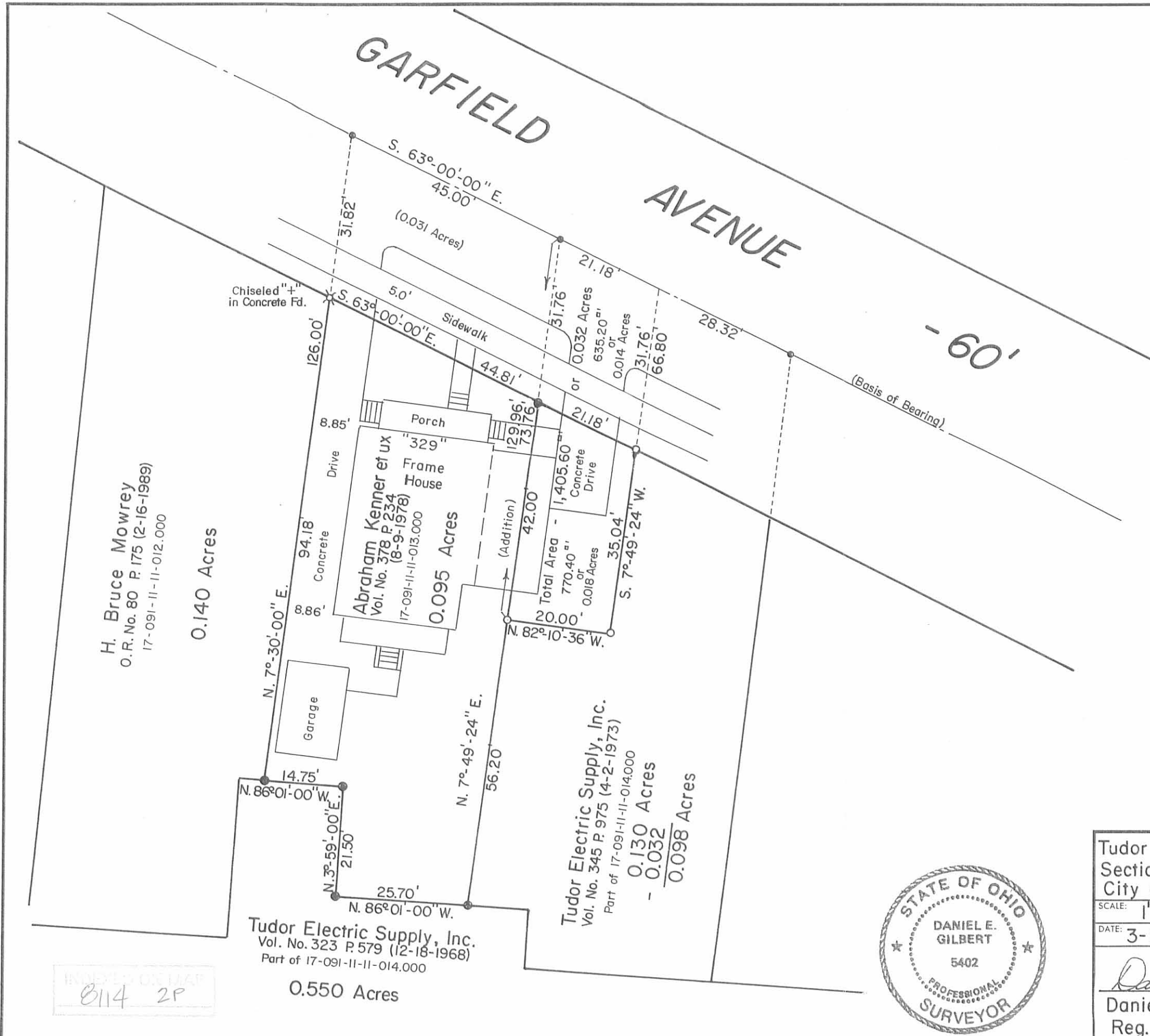
I hereby certify that this description is the result of a field survey made by me on March 14, 1995.



Daniel E. Gilbert
DANIEL E. GILBERT, P.S.
REG. SUR. NO. 5402
400 N. PARK ST.
BELLEFONTAINE, OHIO 43311
TELEPHONE: 1 (513) 593-1428

INDEXED ON MAP
8114 2D

REC'D 3-27-95 *guy*



- SYMBOLS:**
- - P. K. Nails Fd.
 - - 5/8" x 30" Rebars Fd.
 - - 5/8" x 30" Rebars Set.

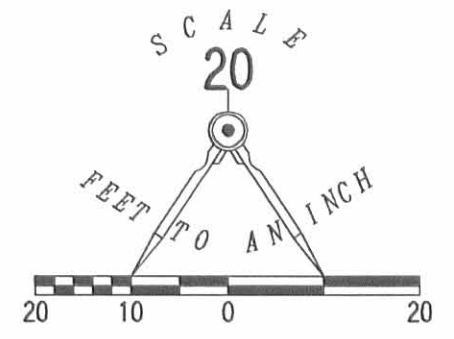
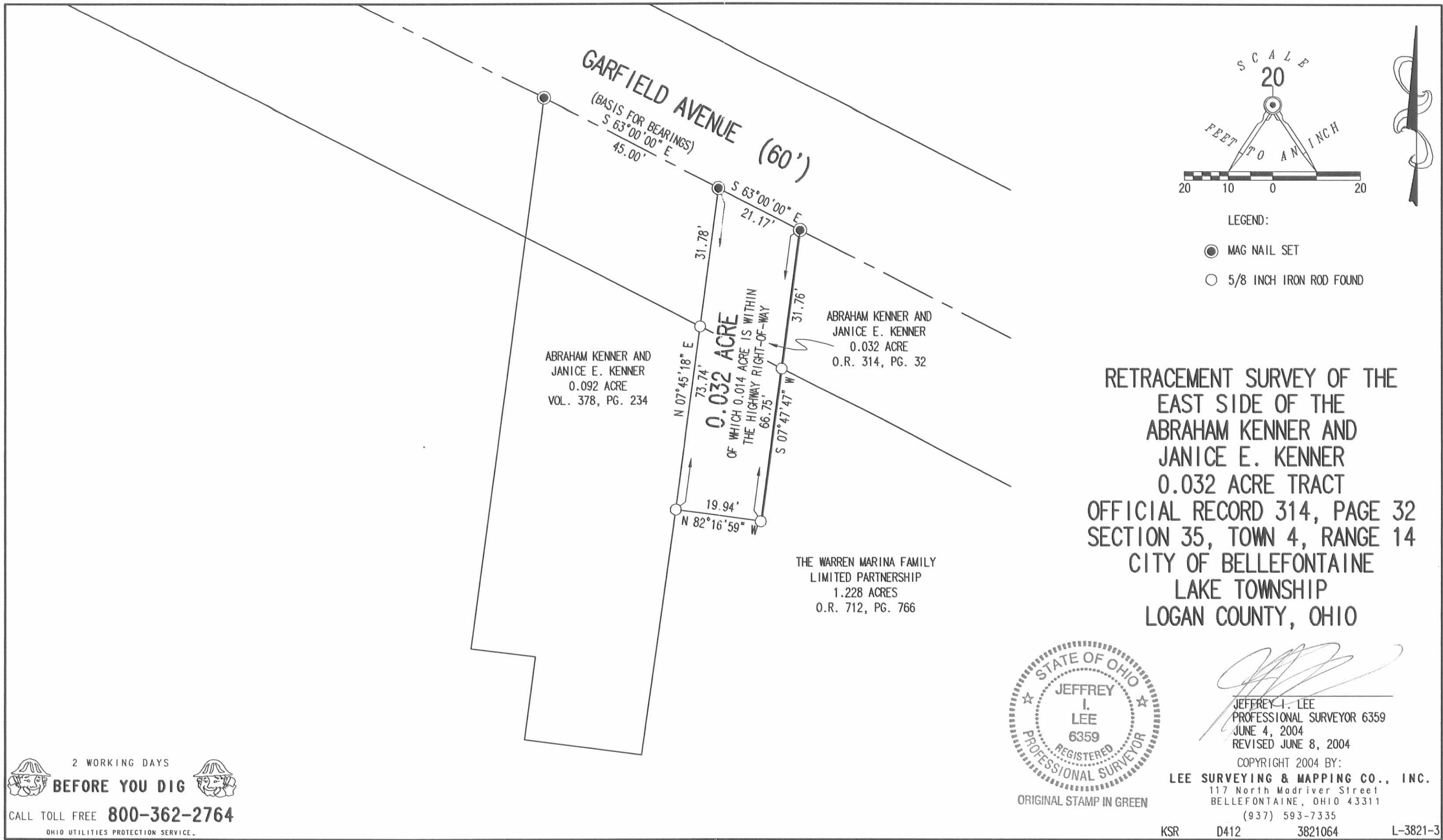
Tudor Electric Supply, Inc. to Abraham Kenner Survey
Section No. 35 T.4 R.14 B.M.R.S., Lake Township,
City of Bellefontaine, Logan County, Ohio.

SCALE: 1" = 20'	APPROVED BY:	DRAWN BY: DEG
DATE: 3-14-1995		REVISED:
<i>Daniel E. Gilbert</i> Daniel E. Gilbert, P.S. Reg. Sur. No. 5402		DRAWING NUMBER: 095-012



INDEXED ON MAP
8114 2P

RD 10-24-05 OK JLB



- LEGEND:
- MAG NAIL SET
 - 5/8 INCH IRON ROD FOUND

RETRACEMENT SURVEY OF THE
 EAST SIDE OF THE
 ABRAHAM KENNER AND
 JANICE E. KENNER
 0.032 ACRE TRACT
 OFFICIAL RECORD 314, PAGE 32
 SECTION 35, TOWN 4, RANGE 14
 CITY OF BELLEFONTAINE
 LAKE TOWNSHIP
 LOGAN COUNTY, OHIO



Jeffrey I. Lee
 JEFFREY I. LEE
 PROFESSIONAL SURVEYOR 6359
 JUNE 4, 2004
 REVISED JUNE 8, 2004

COPYRIGHT 2004 BY:
LEE SURVEYING & MAPPING CO., INC.
 117 North Madriver Street
 BELLEFONTAINE, OHIO 43311
 (937) 593-7335

ORIGINAL STAMP IN GREEN

KSR D412 3821064 L-3821-3

2 WORKING DAYS
BEFORE YOU DIG
 CALL TOLL FREE **800-362-2764**
 OHIO UTILITIES PROTECTION SERVICE

INDEXED ON MA
 8114 3P

Lee Surveying and Mapping Co., Inc.

Land Surveys • Topography • Subdivisions • Construction Layout

117 N. Madriver St.
Bellefontaine OH 43311



Phone: (937) 593-7335
Fax: (937) 593-7444

MOWREY 0.132 ACRE

Lying in Section 35, Town 4, Range 14, Lake Township, City of Bellefontaine, Logan County, Ohio.

Being all of the H. Bruce Mowrey 0.136 acre tract as deeded and described in Official Record 80, Page 175, of the Logan County Records of Deeds and being more particularly described as follows:

Beginning at a 1 inch iron pipe found in a monument box at the intersection of the center-lines of Pratt Street and Garfield Avenue.

THENCE, S 12°-06'-31" W, a distance of 31.04 feet to a 1/2 inch iron pipe found on the south right-of-way of Garfield Avenue at the northwest corner of the Mary E. Breaston 0.159 acre tract (Vol. 352, Pg. 342).

THENCE, with the south right-of-way of Garfield Avenue (60 feet wide) and the north line of the said 0.159 acre tract, S 63°-00'-00" E, a distance of 48.02 feet to a 5/8 inch iron rod set at the TRUE POINT OF BEGINNING.

THENCE, with the south right-of-way of Garfield Avenue, S 63°-00'-00" E, a distance of 49.00 feet to a mag nail set.

THENCE, with the west line of the Abraham Kenner 0.092 acre tract (Vol. 378, Pg. 234), S 7°-43'-04" W, a distance of 94.46 feet to a 5/8 inch iron rod set.

THENCE, with the lines of the Dennis L. Lazenby 1.228 acre tract (O.R. 446, Pg. 352), the following three (3) courses:

N 87°-20'-14" W, a distance of 5.25 feet to a 5/8 inch iron rod set;

S 0°-40'-31" W, a distance of 30.09 feet to a 5/8 inch iron rod set;

N 86°-34'-53" W, a distance of 39.75 feet to a 1-1/2 inch square iron bar found.

THENCE, with the east line of the said 0.159 acre tract, N 5°-42'-04" E, a distance of 144.03 feet to the point of beginning.

Containing 0.132 acre.

The basis for bearings is the south right-of-way of Garfield Avenue, being S 63°-00'-00" E, and all other bearings are from angles and distances measured in a field survey by Lee Surveying and Mapping Co., Inc. on November 14, 2002.

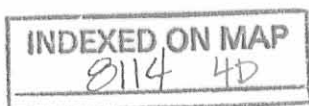
Description prepared by:


Jeffrey I. Lee
Professional Surveyor 6359
November 17, 2002



L-3485

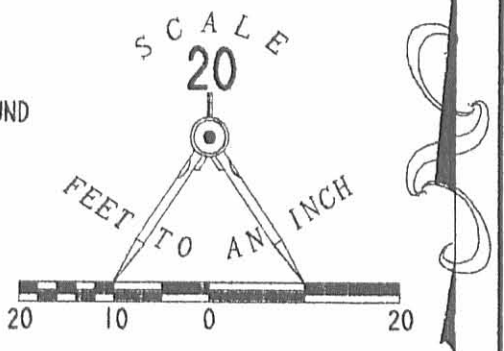
ORIGINAL STAMP IN GREEN



PRATT STREET

LEGEND

- 5/8 INCH IRON ROD SET
- 1-1/2 INCH SQUARE IRON BAR FOUND
- ⊙ MAG NAIL SET
- ⊕ 1 INCH IRON PIPE FOUND IN MONUMENT BOX
- 1/2 INCH IRON PIPE FOUND



S 12°06'31"W
31.04'

S 63°00'00"E
48.02'

GARFIELD AVENUE (60')

(BASIS FOR BEARINGS)
S 63°00'00"E
49.00'

MARY E. BREASTON
0.159 ACRE
VOL. 352, PG. 342

H. BRUCE MOWREY
0.136 ACRE
O.R. 80, PG. 175

0.132 ACRE

ABRAHAM KENNER AND
JANICE KENNER
ORIG. 0.092 ACRES
VOL. 378, PG. 234

N 05°42'04"E
144.03'

94.46'
S 07°43'04"W

5.25'
N 87°20'14"W

S 00°40'31"W
30.09'

39.75'
N 86°34'53"W

DENNIS L. LAZENBY AND
KELLEY T. LAZENBY
1.228 ACRES
O.R. 446, PG. 352

RETRACEMENT SURVEY OF THE
H. BRUCE MOWREY
0.136 ACRE TRACT
OFFICIAL RECORD 80, PAGE 175
SECTION 35, TOWN 4, RANGE 14
CITY OF BELLEFONTAINE
LAKE TOWNSHIP
LOGAN COUNTY, OHIO



SURVEYED BY:

Jeffrey I. Lee
JEFFREY I. LEE
PROFESSIONAL SURVEYOR 6359
NOVEMBER 14, 2002

2 WORKING DAYS
BEFORE YOU DIG
CALL TOLL FREE **800-362-2764**
OHIO UTILITIES PROTECTION SERVICE.

INDEXED ON MAP
8114 4P

ORIGINAL STAMP IN GREEN

COPYRIGHT 2001 BY:
LEE SURVEYING & MAPPING CO., INC.
117 North Madriver Street
BELLEFONTAINE, OHIO 43311
(937) 593-7335

D 407 BRMALRY

L-3485-3

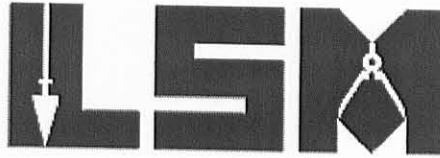
Lee Surveying and Mapping Co., Inc.

11-29-12

Land Surveys • Topography • Subdivisions • Construction Layout



117 N. Madriver St.
Bellefontaine OH 43311



Phone: (937) 593-7335
Fax: (937) 593-7444
surveys@lsminc.us

THE WARREN MARINA FAMILY LIMITED PARTNERSHIP 1.113 ACRES

Lying in Section 35, Town 4, Range 14, City of Bellefontaine, Lake Township, Logan County, Ohio.

Being all of The Warren Marina Family Limited Partnership remainder of the 0.30 acre tract, no acreage tract, 0.36 acre tract, 0.22 acre tract, 0.01 acre tract, 0.20 acre tract, 0.134 acre tract and remainder of the 0.098 acre tract as deeded and described in Official Record 712, Page 766, Tract I through Tract VIII of the Logan County Records of Deeds and being more particularly described as follows:

Commencing on 1 inch iron bar found on the south line of Section 35 and on the intersection of the center-lines of Plumvalley Street and Columbus Avenue.

THENCE, with the south line of Section 35 and the center-line of Columbus Avenue (60 feet wide), S 76°-36'-30"E, a distance of 288.41 feet to a MAG nail set at the TRUE POINT OF BEGINNING.

THENCE, with the east line of the Mobile Instrument Service & Repair, Inc., 0.328 acre tract (O.R. 788, Pg. 589, Tract II), N 12°-48'-42"E, a distance of 69.69 feet to a 5/8 inch iron rod set, passing a 1/2 inch iron pipe found in concrete at 29.82 feet.

THENCE, with the south line of the Mary E. Breaston 0.159 acre tract (Vol. 352, Pg. 342), S 77°-09'-05"E, a distance of 45.45 feet to a 2 inch angle iron found.

THENCE, with the lines of the HSBC Bank USA, National Association, as Trustee 0.132 acre tract (O.R. 1066, Pg. 672), the following three courses:

S 77°-15'-16"E, a distance of 39.80 feet to a 5/8 inch iron rod found.

N 10°-06'-27"E, a distance of 30.09 feet to a 5/8 inch iron rod found.

S 81°-00'-10"E, a distance of 5.77 feet to a 5/8 inch iron rod found.

THENCE, with the lines of the Abraham Kenner original 0.092 acre tract (Vol. 378, Pg. 234), the following four courses:

S 76°-44'-19"E, a distance of 14.23 feet to a 5/8 inch iron rod found.

S 12°-26'-17"W, a distance of 21.35 feet to a 5/8 inch iron rod found.

S 76°-23'-01"E, a distance of 25.62 feet to a 5/8 inch iron rod found.

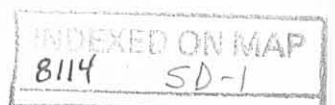
N 17°-37'-23"E, a distance of 55.99 feet to a 5/8 inch iron rod found.

THENCE, with the lines of the Abraham Kenner 0.032 acre tract (O.R. 314, Pg. 032), the following two courses:

S 72°-55'-59"E, a distance of 19.94 feet to a 5/8 inch iron rod found.

N 17°-11'-45"E, a distance of 66.56 feet to a point on the center-line of Garfield Avenue, passing a 5/8 inch iron rod found at 34.97 feet, said point referenced by a MAG nail found bearing N 17°-11'-45"E, a distance of 0.21 feet.

THENCE, with the center-line of Garfield Avenue (60 feet wide), S 53°-38'-36"E, a distance of 28.18 feet to a MAG nail set.



Lee Surveying and Mapping Co., Inc.

Land Surveys • Topography • Subdivisions • Construction Layout

117 N. Madriver St.
Bellefontaine OH 43311



Phone: (937) 593-7335
Fax: (937) 593-7444
surveys@lsmcinc.us

THENCE, S 15°-35'-18"W, a distance of 32.08 feet to a point on the south right-of-way of Garfield Avenue, referenced by a 3/4 inch iron rod found bearing S 15°-35'-18"W, a distance of 0.10 feet.

THENCE, with the south right-of-way of Garfield Avenue, S 53°-38'-36"E, a distance of 114.78 feet to a 5/8 inch iron rod set.

THENCE, N 13°-46'-48"E, a distance of 32.49 feet to a MAG nail set on the center-line of Garfield Avenue.

THENCE, with the center-line of Garfield Avenue, S 53°-38'-36"E, a distance of 162.80 feet to a MAG nail set.

THENCE, with the west line of McKinley Street (Vol. 105, Pg. 159), S 13°-21'-16"W, a distance of 81.74 feet to a MAG nail set on the south line of Section 35 and the center-line of Columbus Avenue, passing MAG nails set at 32.59 feet and 51.74 feet.

THENCE, with the south line of Section 35 and the center-line of Columbus Avenue, N 76°-36'-30"W, a distance of 150.94 feet to a MAG nail set.

THENCE, N 13°-46'-48"E, a distance of 30.00 feet to a MAG nail set on the north right-of-way of Columbus Avenue.

THENCE, with the north right-of-way of Columbus Avenue, N 76°-36'-30"W, a distance of 48.67 feet to a 5/8 inch iron rod set.

THENCE, S 13°-46'-48"W, a distance of 30.00 feet to a MAG nail set on the south line of Section 35 and the center-line of Columbus Avenue.

THENCE, with the south line of Section 35 and the center-line of Columbus Avenue, N 76°-36'-30"W, a distance of 238.18 feet to the point of beginning.

Containing 1.113 acres, of which 0.400 acre is within the highway rights-of-way.

Property is subject to any and all previous easements and rights-of-way of record.

The basis for bearings is the south line of Section 35, being S 76°-36'-30"E, and all other bearings are from angles and distances measured in a field survey by Lee Surveying and Mapping Co., Inc. on November 27, 2012.



Description prepared by:

William K. Bruce

William K. Bruce
Professional Surveyor 7437
November 27, 2012

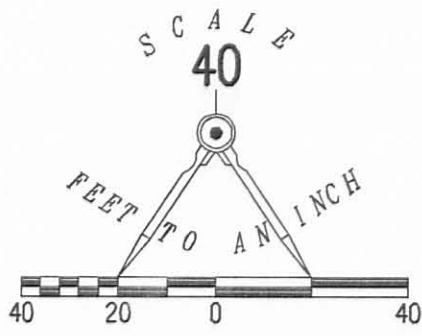
38211012



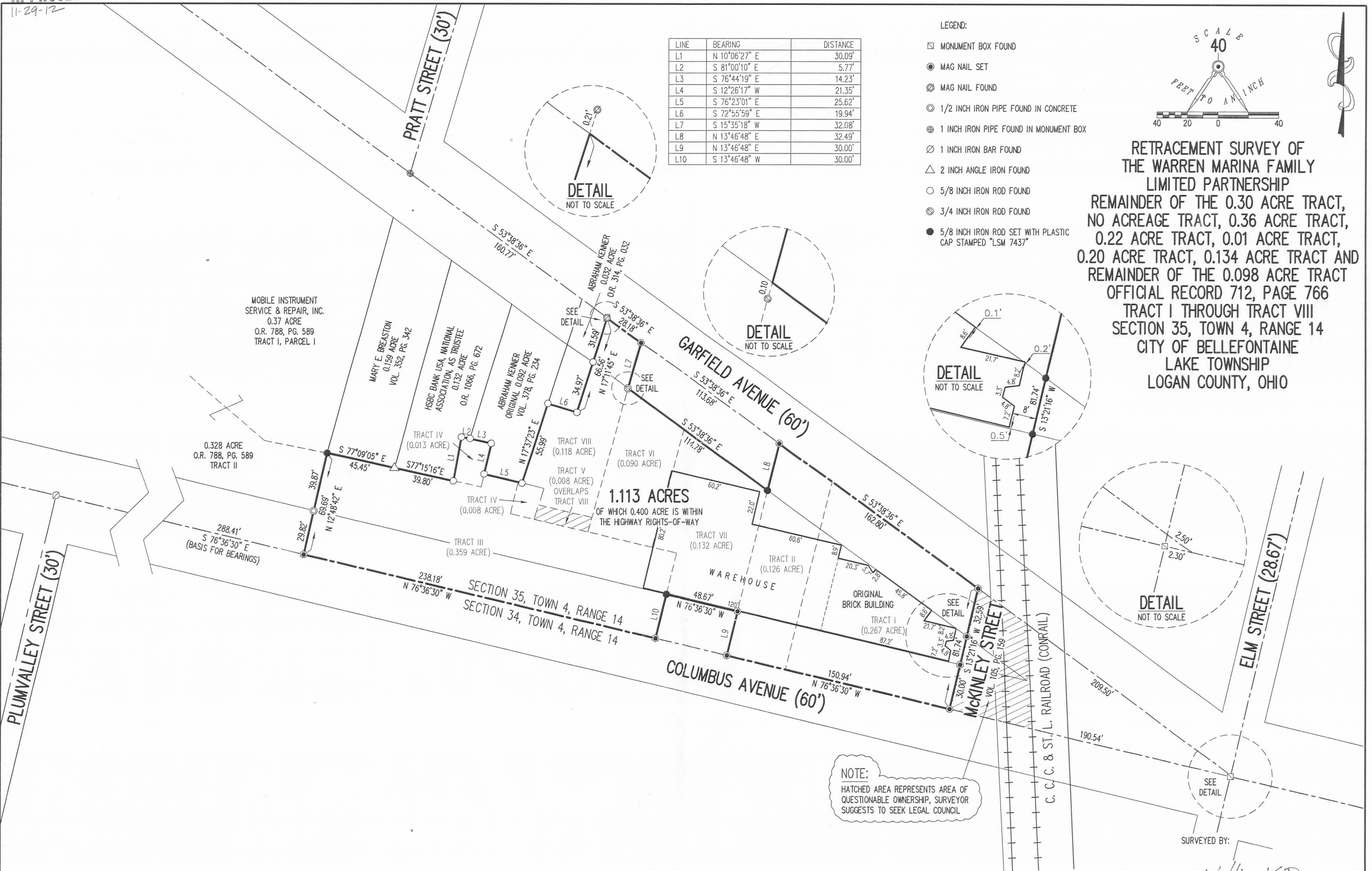
11-29-12

LINE	BEARING	DISTANCE
L1	N 10°06'27" E	30.09'
L2	S 81°00'10" E	5.77'
L3	S 76°44'19" E	14.23'
L4	S 12°26'17" W	21.35'
L5	S 76°23'01" E	25.62'
L6	S 72°55'59" E	19.94'
L7	S 15°35'18" W	32.08'
L8	N 13°46'48" E	32.49'
L9	N 13°46'48" E	30.00'
L10	S 13°46'48" W	30.00'

- LEGEND:
- ☐ MONUMENT BOX FOUND
 - MAG NAIL SET
 - ⊗ MAG NAIL FOUND
 - ⊙ 1/2 INCH IRON PIPE FOUND IN CONCRETE
 - ⊕ 1 INCH IRON PIPE FOUND IN MONUMENT BOX
 - ⊘ 1 INCH IRON BAR FOUND
 - △ 2 INCH ANGLE IRON FOUND
 - 5/8 INCH IRON ROD FOUND
 - ⊙ 3/4 INCH IRON ROD FOUND
 - 5/8 INCH IRON ROD SET WITH PLASTIC CAP STAMPED "LSM 7437"



RETRACEMENT SURVEY OF
 THE WARREN MARINA FAMILY
 LIMITED PARTNERSHIP
 REMAINDER OF THE 0.30 ACRE TRACT,
 NO ACREAGE TRACT, 0.36 ACRE TRACT,
 0.22 ACRE TRACT, 0.01 ACRE TRACT,
 0.20 ACRE TRACT, 0.134 ACRE TRACT AND
 REMAINDER OF THE 0.098 ACRE TRACT
 OFFICIAL RECORD 712, PAGE 766
 TRACT I THROUGH TRACT VIII
 SECTION 35, TOWN 4, RANGE 14
 CITY OF BELLEFONTAINE
 LAKE TOWNSHIP
 LOGAN COUNTY, OHIO



DETAIL
NOT TO SCALE

DETAIL
NOT TO SCALE

DETAIL
NOT TO SCALE

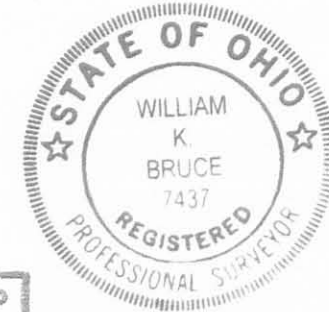
DETAIL
NOT TO SCALE

SEE
DETAIL

1.113 ACRES
 OF WHICH 0.400 ACRE IS WITHIN
 THE HIGHWAY RIGHTS-OF-WAY

NOTE:
 HATCHED AREA REPRESENTS AREA OF
 QUESTIONABLE OWNERSHIP, SURVEYOR
 SUGGESTS TO SEEK LEGAL COUNCIL

SURVEYED BY:
William K. Bruce
 WILLIAM K. BRUCE
 PROFESSIONAL SURVEYOR 7437
 NOVEMBER 27, 2012



COPYRIGHT 2012 BY:
 LEE SURVEYING & MAPPING CO., INC.
 117 North Madison Street
 BELLEFONTAINE, OHIO 43111
 (937) 593-7335
 WWW.LSMINC.US
 surveys@lsminc.us
 KSS D1012 38211012 L-3821-2

INDEXED ON MAP
 8114 SP