

REV'D 3-25-03 SML OK

# Lee Surveying and Mapping Co., Inc.

Land Surveys • Topography • Subdivisions • Construction Layout

117 N. Madriver St.  
Bellefontaine OH 43311



Phone: (937) 593-7335  
Fax: (937) 593-7444

## SINE 0.165 ACRE

Lying in the City of Bellefontaine, Lake Township, Logan County, Ohio.

Being all of the Ernest L. Sine parts of lots 1076, 1077, and 1078 of the Coopers Addition as platted in Plat Cabinet A, Slide 15 of the Logan County Records of Plats and deeded and described in Official Record 602, Page 285, Tracts I and II of the Logan County Records of Deeds and being more particularly described as follows:

Beginning at a 5/8 inch iron rod set at the northeast corner of Lot 1076.

THENCE, with the east lines of Lots 1076, 1077, and 1078, S 11°-24'-02"W, a distance of 108.00 feet to 5/8 inch iron rod set.

THENCE, with a north line of the Robert D. Painter part Lot 1078 (O.R. 87, Pg. 515), N 75°-18'-53"W, a distance of 40.00 feet to a 5/8 inch iron rod set.

THENCE, with the east line of the H. Bruce Mowrey part of Lots 1076, 1077 and 1078 (O.R. 140, Pg. 853) , N 11°-38'-20"E, a distance of 63.15 feet to a 5/8 inch iron rod set.

THENCE, with the north line of the said H. Bruce Mowrey tract, N 72°-14'-52"W, a distance of 61.27 feet to a 5/8 inch iron rod set.

THENCE, with the east line of the Dennis L. Schweitzer Etux part Lot 1076 (O.R. 48, Pg. 666), N 15°-09'-51"E, a distance of 47.50 feet to a 5/8 inch iron rod set.

THENCE, with the south right-of-way of Cooper Avenue (60 feet wide) S 72°-00'-09"E, a distance of 89.36 feet to a 5/8 inch iron rod set.

THENCE, with the south right-of-way of Cooper Avenue S 69°-43'-15"E, a distance of 8.78 feet to the point of beginning.

Containing 0.165 acre.

The basis for bearings is the center-line of Cooper Avenue, being S 72°-00'-00"E, and all other bearings are from angles and distances measured in a field survey by Lee Surveying and Mapping Co., Inc. on March 10, 2003.

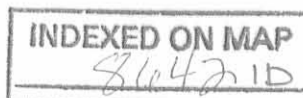
Description prepared by:



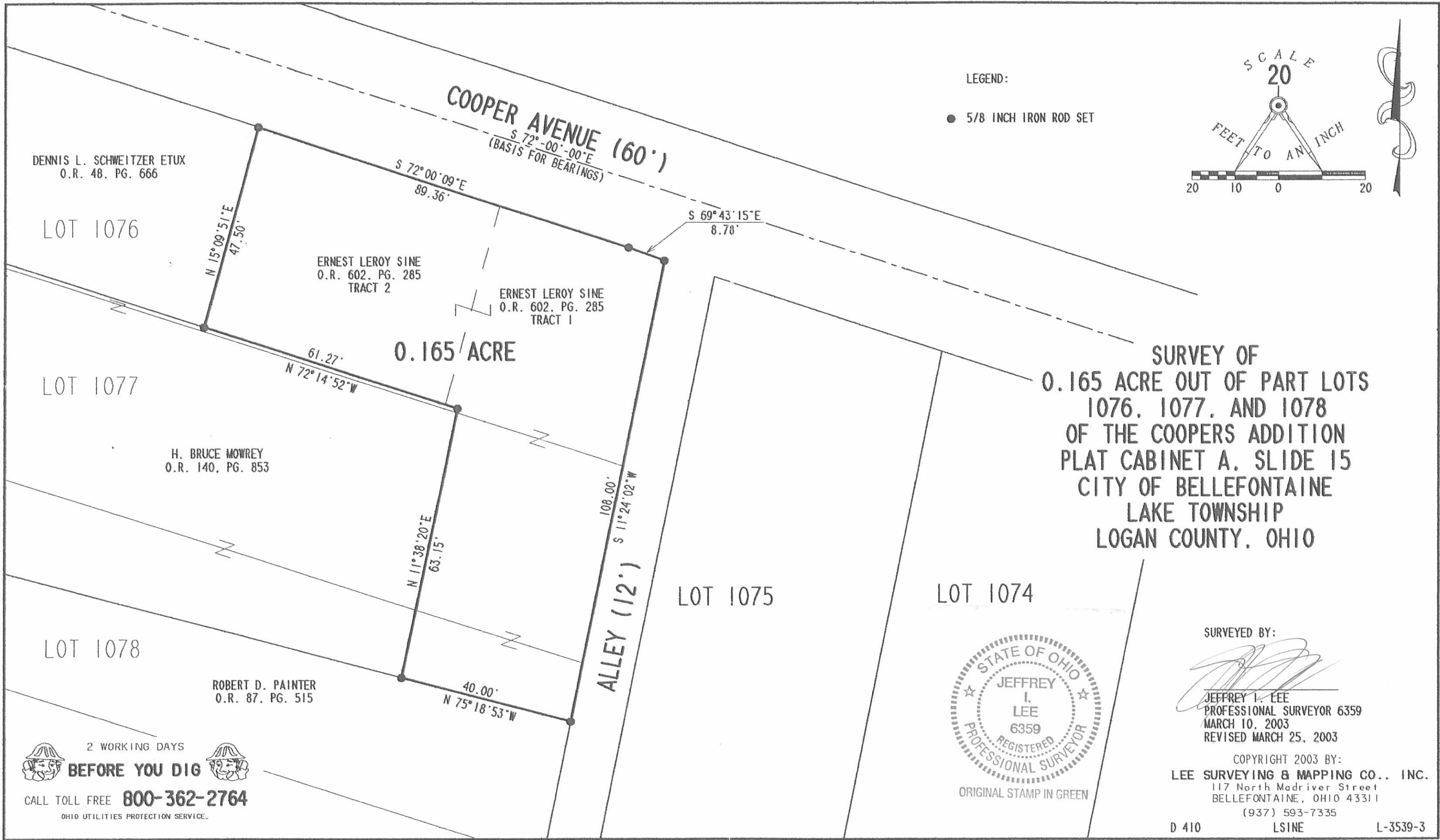
ORIGINAL STAMP IN GREEN

Jeffrey I. Lee  
Professional Surveyor 6359  
March 13, 2003  
Revised March 25, 2003

L-3539

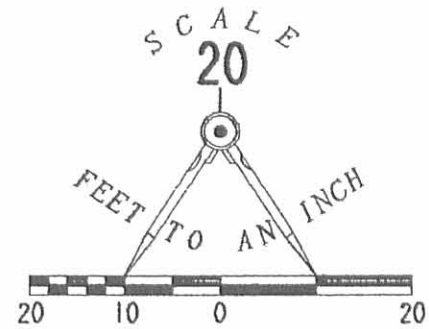


REC'D 3-25-03 SMY/OC



LEGEND:

● 5/8 INCH IRON ROD SET



DENNIS L. SCHWEITZER ETUX  
O.R. 48. PG. 666

LOT 1076

ERNEST LEROY SINE  
O.R. 602. PG. 285  
TRACT 2

ERNEST LEROY SINE  
O.R. 602. PG. 285  
TRACT 1

0.165 ACRE

LOT 1077

H. BRUCE MOWREY  
O.R. 140. PG. 853

SURVEY OF  
0.165 ACRE OUT OF PART LOTS  
1076, 1077, AND 1078  
OF THE COOPERS ADDITION  
PLAT CABINET A, SLIDE 15  
CITY OF BELLEFONTAINE  
LAKE TOWNSHIP  
LOGAN COUNTY, OHIO

LOT 1078

ROBERT D. PAINTER  
O.R. 87. PG. 515

LOT 1075

LOT 1074



ORIGINAL STAMP IN GREEN

SURVEYED BY:

*Jeffrey I. Lee*  
 JEFFREY I. LEE  
 PROFESSIONAL SURVEYOR 6359  
 MARCH 10, 2003

REVISED MARCH 25, 2003

COPYRIGHT 2003 BY:  
LEE SURVEYING & MAPPING CO., INC.

117 North Madriver Street  
BELLEFONTAINE, OHIO 43311

(937) 593-7335

D 410

LSINE

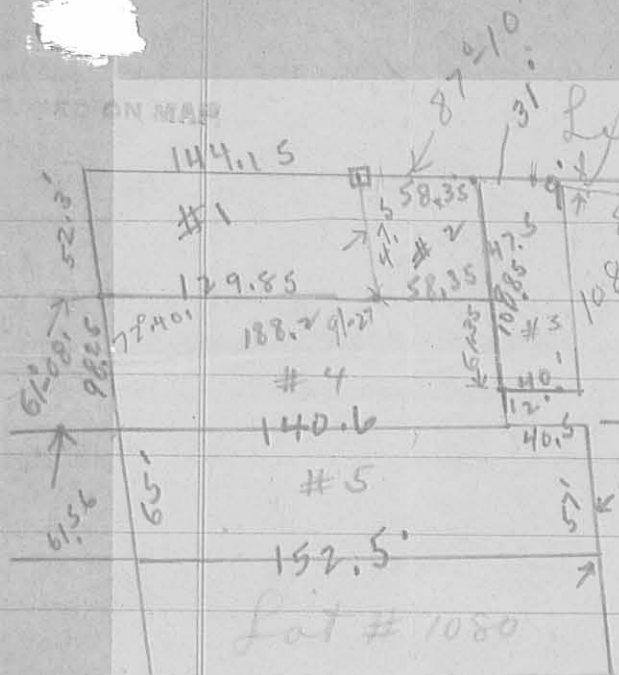
L-3539-3

2 WORKING DAYS  
**BEFORE YOU DIG**  
 CALL TOLL FREE **800-362-2764**  
 OHIO UTILITIES PROTECTION SERVICE.

INDEXED ON MAP  
80421P

# Howenstine & Huston survey

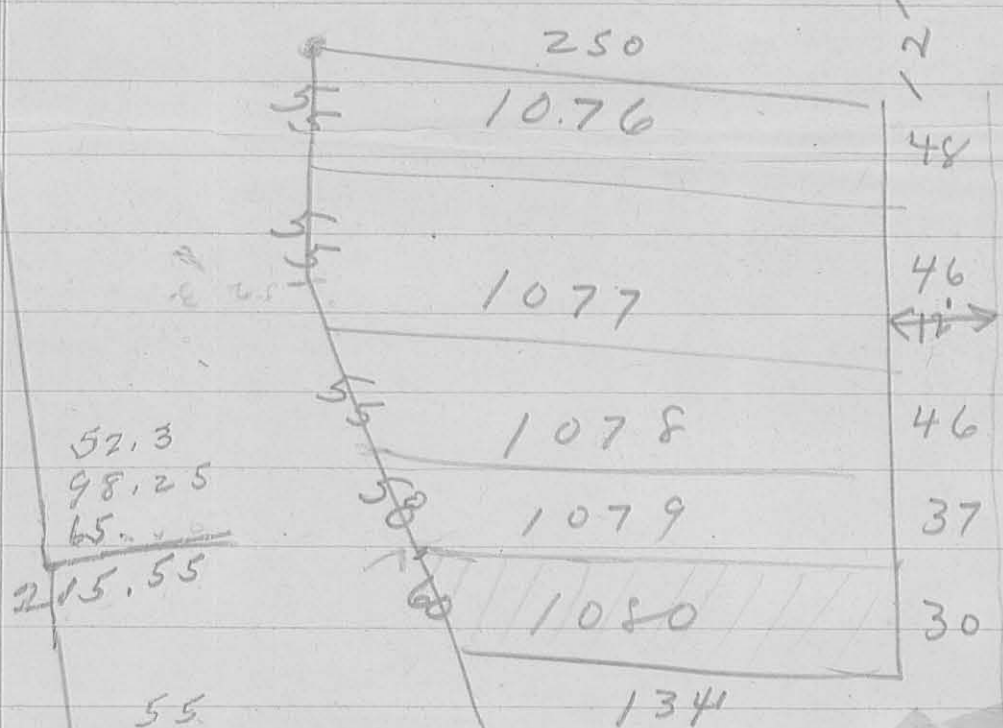
Ludlow



$$\begin{array}{r} 12983 \\ 5835 \\ \hline 8820 \end{array}$$

$$\begin{array}{r} 1088 \\ 12 \\ 57 \\ \hline 177.8 \end{array}$$

INDEXED ON MAP  
8642 ZP



$$\begin{array}{r} 30 \\ 57 \\ 46 \\ 46 \\ \hline 279 \end{array}$$

$$\begin{array}{r} 52.3 \\ 98.25 \\ 65 \\ \hline 215.55 \end{array}$$

$$\begin{array}{r} 55 \\ 55 \\ 55 \\ 58 \\ \hline 223 \\ 215.55 \\ \hline 7.45 \end{array}$$

$$\begin{array}{r} 108 \\ 12 \\ 57 \\ \hline 177 \end{array}$$

$$\begin{array}{r} 48 \\ 46 \\ 46 \\ 37 \\ \hline 177 \end{array}$$