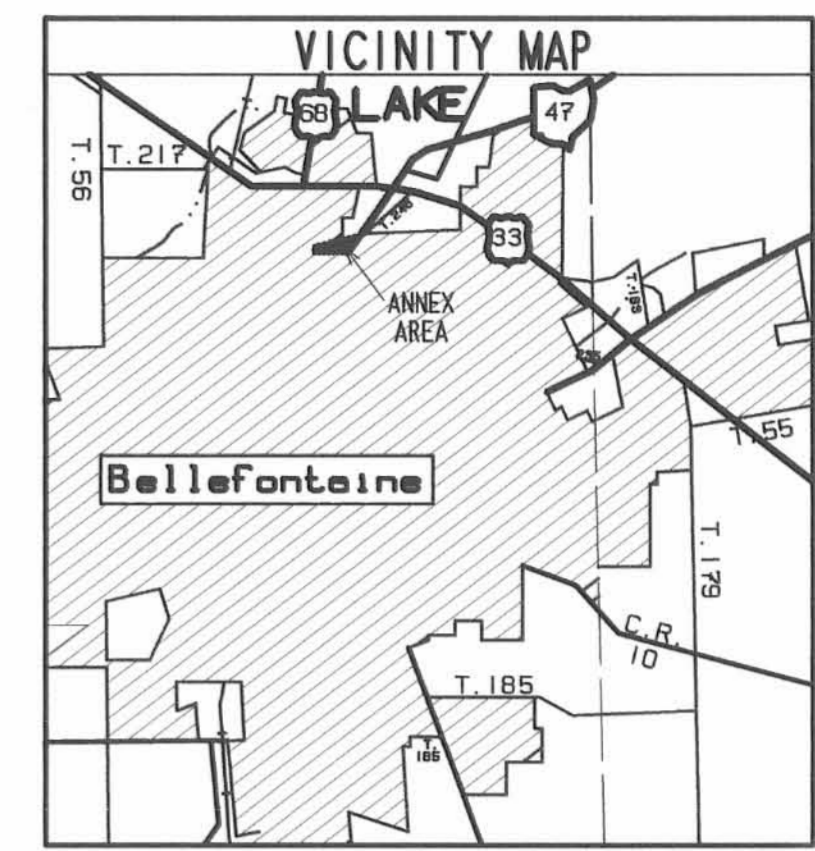
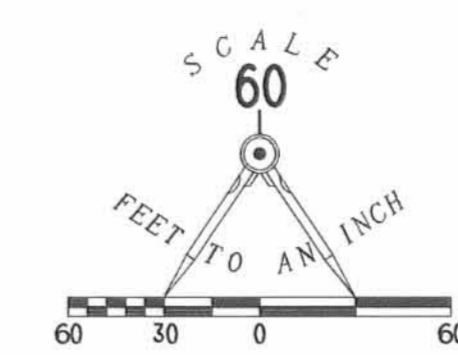


REFERENCES  
 O.D.O.T. R/W PLAN LOG-47DA-(0.56)  
 SHEET 136 OF 141  
 LOGAN COUNTY ENGINEERS' FILES:  
 R-6666 AND R-1531



**DESCRIPTION**

LYING IN VIRGINIA MILITARY SURVEY 5245, LAKE TOWNSHIP, LOGAN COUNTY, OHIO.

BEING PARTS OF THE HILL AND HAMILTON FINANCIAL SERVICES, LTD 2.004 ACRE TRACT AS DEEDED AND DESCRIBED IN OFFICIAL RECORD 343, PAGE 887, THE BARROW, MEYER AND ZUROVCHAK, AN OHIO PARTNERSHIP, ORIGINAL 4.094 ACRE TRACT AS DEEDED AND DESCRIBED IN OFFICIAL RECORD 343, PAGE 884, THE ROBERT DALE JACOBS 2.00 ACRE TRACT AS DEEDED AND DESCRIBED IN OFFICIAL RECORD 143, PAGE 254 AND THE MARY RUTAN HOSPITAL 5.115 ACRE TRACT AS DEEDED AND DESCRIBED IN OFFICIAL RECORD 446, PAGE 440. ALL OF THE LOGAN COUNTY RECORDS OF DEEDS AND BEING MORE PARTICULARLY DESCRIBED AS FOLLOWS:

BEGINNING AT A POINT ON THE NORTHEAST CORNER OF THE SAID 2.004 ACRE TRACT ON THE OLD CENTER-LINE OF TOWNSHIP ROAD 246 AND THE NORTH LINE OF VIRGINIA MILITARY SURVEY 5245 AT THE INTERSECTION WITH THE WESTERLY LIMITED ACCESS RIGHT-OF-WAY OF OHIO ROUTE 47.

THENCE, WITH THE WESTERLY LIMITED ACCESS RIGHT-OF-WAY OF OHIO ROUTE 47 AND THE EAST LINE OF THE SAID 2.004 ACRE TRACT, S 37°-52'-41" W, A DISTANCE OF 332.40 FEET TO A POINT.

THENCE, WITH THE CITY OF BELLEFONTAINE CORPORATION LINE AND THROUGH THE SAID 2.004 ACRE TRACT, THE 4.094 ACRE TRACT, THE 2.00 ACRE TRACT AND THE 5.115 ACRE TRACT, N 85°-54'-19" W A DISTANCE OF 558.37 FEET TO A POINT.

THENCE, WITH THE CITY OF BELLEFONTAINE CORPORATION LINE AND THROUGH THE SAID 5.115 ACRE TRACT, N 2°-00'-00" E, A DISTANCE OF 241.65 FEET TO A POINT.

THENCE, WITH THE NORTH LINE OF VIRGINIA MILITARY SURVEY 5245, THE OLD CENTER-LINE OF TOWNSHIP ROAD 246 (DOWELL AVENUE) AND THE CITY OF BELLEFONTAINE CORPORATION LINE AND SAID CORPORATION LINE EXTENDED, S 88°-08'-00" E, A DISTANCE OF 753.30 FEET TO THE POINT OF BEGINNING.

CONTAINING 3.695 ACRES.

THE BASIS FOR BEARINGS IS THE NORTH LINE OF VIRGINIA MILITARY SURVEY 5245, BEING S 88°-08'-00" E, AND ALL OTHER BEARINGS AND DISTANCES ARE FROM DEED RECORD. THIS DESCRIPTION IS FOR ANNEXATION PURPOSES ONLY AND IS NOT A BOUNDARY SURVEY AS DEFINED IN OHIO ADMINISTRATIVE CODE 4733-37.

**APPROVALS**

|                              |                            |               |
|------------------------------|----------------------------|---------------|
| LOGAN COUNTY COMMISSIONERS   | <i>John Gault</i>          | 11/3/02       |
|                              | <i>John Resa</i>           | 11/5/02       |
|                              | <i>Ronald Taylor</i>       | 11/5/02       |
| LOGAN COUNTY ENGINEER        | <i>Scott C. Cole</i>       | 11-6-02       |
| CHAIRMAN, TOWNSHIP TRUSTEES  | <i>Jerry F. Wash</i>       | 11-8-02       |
| L.U.C. PLANNING DIRECTOR     | <i>Annak Co</i>            | 11-19-02      |
| MAYOR OF BELLEFONTAINE       | <i>Robert E. Sutz</i>      | 11-02-02      |
| PRESIDENT, CITY COUNCIL      | <i>William B. Peterson</i> | 11/8/02       |
| CLERK, CITY COUNCIL          | <i>Vicki Zepfman</i>       | 11-9-02       |
| PLAT PRE-APPROVED            | <i>Jon C. Hines</i>        | 11-1-02       |
| PLAT CHECKED                 | <i>Jon C. Hines</i>        | 11-26-02      |
| CITY ORDINANCE NUMBER        | 02-71                      | 8-13-02       |
| TRANSFERRED THIS AND DAY OF  | December                   | 20 02         |
| AUDITOR, LOGAN COUNTY, OHIO  | <i>Michael G. Godwin</i>   |               |
| RECEIVED FOR RECORD AT       | 10:11                      | 0'CLOCK A. M. |
| THIS DAY OF                  | December                   | 20 02         |
| RECORDER, LOGAN COUNTY, OHIO | <i>Linda Hanson</i>        |               |
| RECORDED IN PLAT CABINET     | B                          | SLIDE 80A     |

**SURVEYOR'S AFFIDAVIT**

THE ABOVE ANNEXATION MAP HAS BEEN PREPARED FROM RECORDS BY LEE SURVEYING AND MAPPING COMPANY. THIS IS NOT A BOUNDARY SURVEY AS DEFINED IN 4733-37 OF THE OHIO ADMINISTRATIVE CODE.



*William K. Bruce*  
 WILLIAM K. BRUCE  
 PROFESSIONAL SURVEYOR 7437  
 APRIL 25, 2000

ANNEXATION OF 3.695 ACRES  
 TO THE CITY OF BELLEFONTAINE  
 VIRGINIA MILITARY SURVEY 5245  
 LAKE TOWNSHIP  
 LOGAN COUNTY, OHIO

2008013016

REC'D 8-12-97 SWJ OK ✓



# Lee Surveying and Mapping Co., Inc.



Farm Surveys • Lot Surveys • Topography • Subdivisions • Construction Layout

117 NORTH MADRIVER STREET  
BELLEFONTAINE, OHIO 43311

(937) 593-7335  
FAX (937) 593-7444

## BARROWS & MEYER 2.004 ACRES

Lying in Virginia Military Survey 5245, the City of Bellefontaine and Lake Township, Logan County, Ohio.

Being out of the Barrows & Meyer, and Ohio Partnership, 4.094 acre tract as deeded and described in Official Record 172, Page 535 of the Logan County Records of Deeds and being more particularly described as follows:

Beginning at a 5/8 inch iron rod set on the north line of Virginia Military Survey 5245, the old center-line of Township Road 246, and the westerly limited access right-of-way line of State Route 47.

THENCE, with the said westerly limited access right-of-way, S 37°-52'-41" W, a distance of 332.40 feet to a concrete right-of-way monument found on the north corporation line of the City of Bellefontaine and the south line of the limited access right-of-way, passing a concrete right-of-way monument at 37.24 feet.

THENCE, continuing with the limited access right-of-way and the corporation line, S 85°-54'-19" E, a distance of 192.87 feet to a concrete right-of-way monument found on the former westerly right-of-way of Rush Avenue (State Route 47).

THENCE, with the said former westerly right-of-way, S 50°-11'-57" W, a distance of 295.03 feet to a point referenced by a 5/8 inch iron rod set S 50°-11'-57" W, a distance of 30.37 feet.

THENCE, through the 4.094 acre tract, N 37°-04'-15" W, a distance of 295.48 feet to a 5/8 inch iron rod set, passing a 5/8 inch iron rod set at 7.00 feet.

THENCE, with a southerly line of the Robert Dale Jacobs 2.00 acre tract (O.R. 143, Pg. 254), N 52°-02'-53" E, a distance of 377.92 feet to a 5/8 inch iron rod set on the north line of Virginia Military Survey 5245 and the old center-line of Township Road 246, passing a 1/2 inch iron rod found at 324.75 feet.

THENCE, with the north line of Virginia Military Survey 5245, S 88°-27'-38" E, a distance of 118.53 feet to the point of beginning.

Containing 2.004 acres of which 1.085 acres are in Lake Township (0.677 acre is within the right-of-way of the streets) and 0.919 acre is within the City of Bellefontaine.

The basis for bearings is the center-line of State Route 47 being S 38°-28'-00" W, and all other bearings are from angles and distances measured in a field survey by Lee Surveying and Mapping Company on October 6, 1992 and May 7, 1997.

Description prepared by:

Jeffrey I. Lee  
Professional Surveyor 6359  
May 16, 1997  
Revised August 11, 1997

L 1685

INDEXED ON MAP  
8755 10-1

REC'D 5-19-97 SWJ ✓



# Lee Surveying and Mapping Co., Inc.



Farm Surveys • Lot Surveys • Topography • Subdivisions • Construction Layout

117 NORTH MADRIVER STREET  
BELLEFONTAINE, OHIO 43311

(937) 593-7335  
FAX (937) 593-7444

## BARROWS & MEYER 25 FEET WIDE INGRESS/EGRESS EASEMENT

Lying in Virginia Military Survey 5245, the City of Bellefontaine and Lake Township, Logan County, Ohio.

Being a 25 feet wide ingress/egress easement over the Barrows & Meyer, an Ohio Partnership, 4.094 acre tract as deeded and described in Official Record 172, Page 535 of the Logan County Records of Deeds and being more particularly described as follows:

Beginning at a 5/8 inch iron rod set on the north line of Virginia Military Survey 5245, the old center-line of Township Road 246, and the westerly limited access right-of-way line of State Route 47.

THENCE, with the said westerly limited access right-of-way, S 37°-52'-41" W, a distance of 332.40 feet to a concrete right-of-way monument found on the north corporation line of the City of Bellefontaine and the south line of the limited access right-of-way, passing a concrete right-of-way monument at 37.24 feet.

THENCE, with the right-of-way of Ohio Route 47 and Rush Avenue, S 34°-35'-37" W, a distance of 157.49 feet to a 5/8 inch iron rod set at the TRUE POINT OF BEGINNING.

THENCE, with the said right-of-way, S 34°-35'-37" W, a distance of 98.58 feet to a concrete right-of-way monument found.

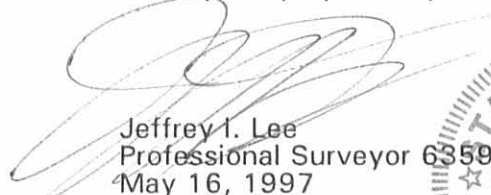
THENCE, N 45°-15'-10" W, a distance of 25.40 feet to a point.

THENCE, N 34°-35'-37" E, a distance of 102.39 feet to a point in the westerly line of a 2.004 acre tract.

THENCE, S 37°-04'-15" E, a distance of 26.34 feet to the point of beginning.

The basis for bearings is the center-line of State Route 47 being S 38°-28'-00" W, and all other bearings are from angles and distances measured in a field survey by Lee Surveying and Mapping Company on October 6, 1992 and May 7, 1997.

Description prepared by:

  
Jeffrey I. Lee  
Professional Surveyor 6359  
May 16, 1997



L 1685

ORIGINAL STAMP IN GREEN

RECORDED ON MAP  
8755 ID-2



# Lee Surveying and Mapping Co., Inc.



Farm Surveys • Lot Surveys • Topography • Subdivisions • Construction Layout

117 NORTH MADRIVER STREET  
BELLEFONTAINE, OHIO 43311

(937) 593-7335  
FAX (937) 593-7444

## BARROWS & MEYER 20 FEET WIDE SANITARY SEWER EASEMENT

Lying in Virginia Military Survey 5245, the City of Bellefontaine and Lake Township, Logan County, Ohio.

Being a 20 feet wide sanitary sewer easement over the Barrows & Meyer, an Ohio Partnership, 4.094 acre tract as deeded and described in Official Record 172, Page 535 of the Logan County Records of Deeds and being more particularly described as follows:

Beginning at a 5/8 inch iron rod set on the north line of Virginia Military Survey 5245, the old center-line of Township Road 246, and the westerly limited access right-of-way line of State Route 47.

THENCE, with the north line of Virginia Military Survey 5245, the old center-line of Township Road 246, N 88°-27'-38" W, a distance of 118.53 feet to a 5/8 inch iron rod set.

THENCE, with the east line of the Robert Dale Jacobs 2.00 acre tract (O.R. 143, Pg. 254), S 52°-02'-53" W, a distance of 377.92 feet to a 5/8 inch iron rod set, passing a 1/2 inch iron rod found at 47.17 feet.

THENCE, S 37°-04'-15" E, a distance of 46.33 feet to a point at the TRUE POINT OF BEGINNING.

THENCE, with the center-line of the 20 feet wide sanitary sewer easement the following three (3) courses:

S 81°-32'-46" W, a distance of 42.64 feet to a point.

S 37°-25'-49" W, a distance of 105.27 feet to a point.

S 89°-54'-55" W, a distance of 61.34 feet to the point of terminus of this easement.

The basis for bearings is the center-line of State Route 47 being S 38°-28'-00" W, and all other bearings are from angles and distances measured in a field survey by Lee Surveying and Mapping Company on October 6, 1992, May 7, 1997 and August 6, 1997.

Description prepared by:

Jeffrey I. Lee  
Professional Surveyor 6359  
August 12, 1997



L 1685

ORIGINAL STAMP IN GREEN

INDEXED ON MAP  
8755 ID-3

REC'D 5-19-97 SWJ ✓



# Lee Surveying and Mapping Co., Inc.



Farm Surveys • Lot Surveys • Topography • Subdivisions • Construction Layout

117 NORTH MADRIVER STREET  
BELLEFONTAINE, OHIO 43311

(937) 593-7335  
FAX (937) 593-7444

## BARROWS & MEYER 50 FEET WIDE INGRESS/EGRESS EASEMENT

Lying in Virginia Military Survey 5245, the City of Bellefontaine and Lake Township, Logan County, Ohio.

Being a 50 feet wide ingress/egress easement over the Barrows & Meyer, an Ohio Partnership, 4.094 acre tract as deeded and described in Official Record 172, Page 535 of the Logan County Records of Deeds and being more particularly described as follows:

Beginning at a 5/8 inch iron rod set on the north line of Virginia Military Survey 5245, the old center-line of Township Road 246, and the westerly limited access right-of-way line of State Route 47.

THENCE, with the said westerly limited access right-of-way, S 37°-52'-41" W, a distance of 332.40 feet to a concrete right-of-way monument found on the north corporation line of the City of Bellefontaine and the south line of the limited access right-of-way, passing a concrete right-of-way monument at 37.24 feet.

THENCE, with the right-of-way of Ohio Route 47 and Rush Avenue, S 34°-35'-37" W, a distance of 256.07 feet to a concrete right-of-way monument found at the TRUE POINT OF BEGINNING.

THENCE, with the right-of-way of Ohio Route 47 and Rush Avenue, S 45°-15'-10" E, a distance of 45.25 feet to a concrete right-of-way monument found.

THENCE, with the right-of-way of Ohio Route 47 and Rush Avenue, S 38°-28'-00" W, a distance of 50.30 feet to a point.


THENCE, N 45°-15'-10" W, a distance of 70.65 feet to a point.

THENCE, N 38°-28'-00" E, a distance of 50.30 feet to a point.

THENCE, S 45°-15'-10" E, a distance of 25.40 feet to the point of beginning.

The basis for bearings is the center-line of State Route 47 being S 38°-28'-00" W, and all other bearings are from angles and distances measured in a field survey by Lee Surveying and Mapping Company on October 6, 1992 and May 7, 1997.

Description prepared by:

  
Jeffrey I. Lee  
Professional Surveyor 6359  
May 16, 1997



L 1685

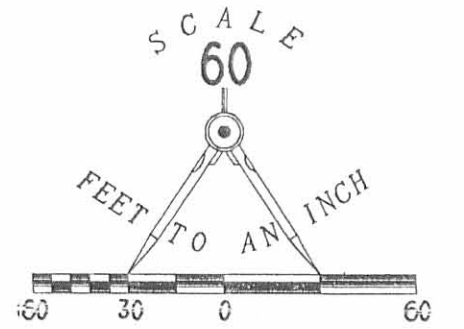
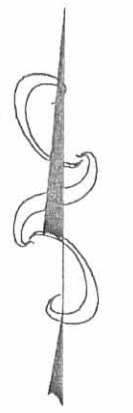
ORIGINAL STAMP IN GREEN

INDEXED ON MAP  
8755 1D-4

REFERENCES:

O.D.O.T. R/W PLANS, LOGAN COUNTY, LOG-47DA-(0.56), SHEET 136 OF 141

LOGAN COUNTY ENGINEER'S RECORDS:  
FILE R-6666  
FILE R-1531



LEGEND:

- 5/8" IRON ROD SET
  - 5/8" IRON ROD FOUND
  - ⊗ 1/2" IRON ROD FOUND
  - 1 1/2" IRON BAR FOUND
  - ⊙ CONC. RIGHT-OF-WAY MONUMENT FOUND
  - P.K. NAIL SET IN DRILL HOLE
- ALL IRON RODS SET ARE 5/8" x 30" REBAR WITH PLASTIC I.D. CAPS STAMPED "LEE PS6359"

**SURVEY OF TWO TRACTS  
OUT OF THE BARROWS & MEYER  
4.094 ACRE TRACT  
OFFICIAL RECORD 172, PAGE 535  
VIRGINIA MILITARY SURVEY 5245  
CITY OF BELLEFONTAINE AND LAKE TOWNSHIP  
LOGAN COUNTY, OHIO**

SURVEYED BY:

*Jeffrey I. Lee*  
JEFFREY I. LEE  
PROFESSIONAL SURVEYOR 6359  
MAY 7, 1997

REVISOR: JEFFREY I. LEE  
REVISED AUGUST 11, 1997  
COPYRIGHT 1997 BY:  
LEE SURVEYING & MAPPING CO., INC.  
117 North Madriver Street  
BELLEFONTAINE, OHIO 43311  
(937) 593-7335



ORIGINAL STAMP IN GREEN

INDEXED ON MAP  
87155 1P

2 WORKING DAYS  
**BEFORE YOU DIG**  
CALL TOLL FREE 800-362-2764  
OHIO UTILITIES PROTECTION SERVICE.

Received 10/8/92 OK 924



# Lee Surveying and Mapping Co.



Farm Surveys • Lot Surveys • Topography • Subdivisions • Construction Layout

143 EAST COLUMBUS AVENUE  
BELLEFONTAINE, OHIO 43311

(513) 593-7335  
B & R DEVELOPMENT (4.094 ACRES)

JEFFREY I. LEE, P.S.

Lying in Virginia Military Survey 5245, the City of Bellefontaine and Lake Township, Logan County, Ohio.

Being all of the B & R Development, (an Ohio Partnership) land as deeded and described in Official Record 55, Page 15 of the Logan County Records of Deeds and being more particularly described as follows:

Beginning at a 5/8 inch iron rod set on the north line of Virginia Military Survey 5245, the old center-line of Township Road 246, and the westerly limited access right-of-way line of State Route 47.

THENCE, with the said westerly limited access right-of-way, S 37°-52'-41" W, a distance of 332.40 feet to a concrete right-of-way monument found on the north corporation line of the City of Bellefontaine and the south line of the limited access right-of-way, passing a concrete right-of-way monument at 37.24 feet.

THENCE, continuing with the limited access right-of-way and the corporation line, S 85°-54'-19" E, a distance of 192.87 feet to a concrete right-of-way monument found on the former westerly right-of-way of Rush Avenue (State Route 47).

THENCE, with the said former westerly right-of-way, the following two courses:  
S 50°-11'-57" W, a distance of 452.03 feet to a 5/8 inch iron rod set.  
S 38°-28'-00" W, a distance of 106.79 feet to a PK nail set in a drill hole in a concrete drive apron.

THENCE, with the northerly line of the Aaron C. Wren 1.0 acre tract (Vol. 409, Pg. 199), N 52°-13'-23" W, a distance of 300.43 feet to a 1-1/2 inch iron bar found.

THENCE, with an easterly line of the Loganview, Inc. 7.42 acre tract (O.R. 73, Pg. 193) and the Robert Jacobs 2.00 acre tract (O.R. 143, Pg. 254), N 37°-15'-02" E, a distance of 134.80 feet to a 5/8 inch iron rod set.

THENCE, continuing with the easterly line of the said 2.00 acre tract, N 52°-02'-53" E, a distance of 586.92 feet to a 5/8 inch iron rod set on the north line of Virginia Military Survey 5245 and the old center-line of Township Road 246, passing a 1/2 inch iron rod found at 539.75 feet.

THENCE, with the north line of Virginia Military Survey 5245, S 88°-27'-38" E, a distance of 118.53 feet to the point of beginning.

Containing 4.094 acres of which 1.093 is in Lake Township (0.087 acre within the right-of-way of Township Road 246) and 3.001 acre is within the City of Bellefontaine (0.804 acre is within the right-of-way of State Route 47, Rush Avenue).

The basis for bearings is based upon the center-line of State Route 47 being S 38°-28'-00" W, and all other bearings are from angles and distances measured in a field survey by Lee Surveying and Mapping Company on October 6, 1992.

Description prepared by:

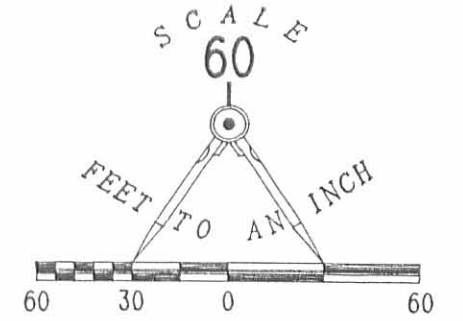
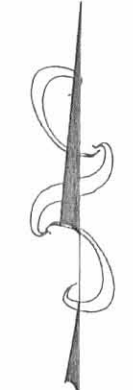
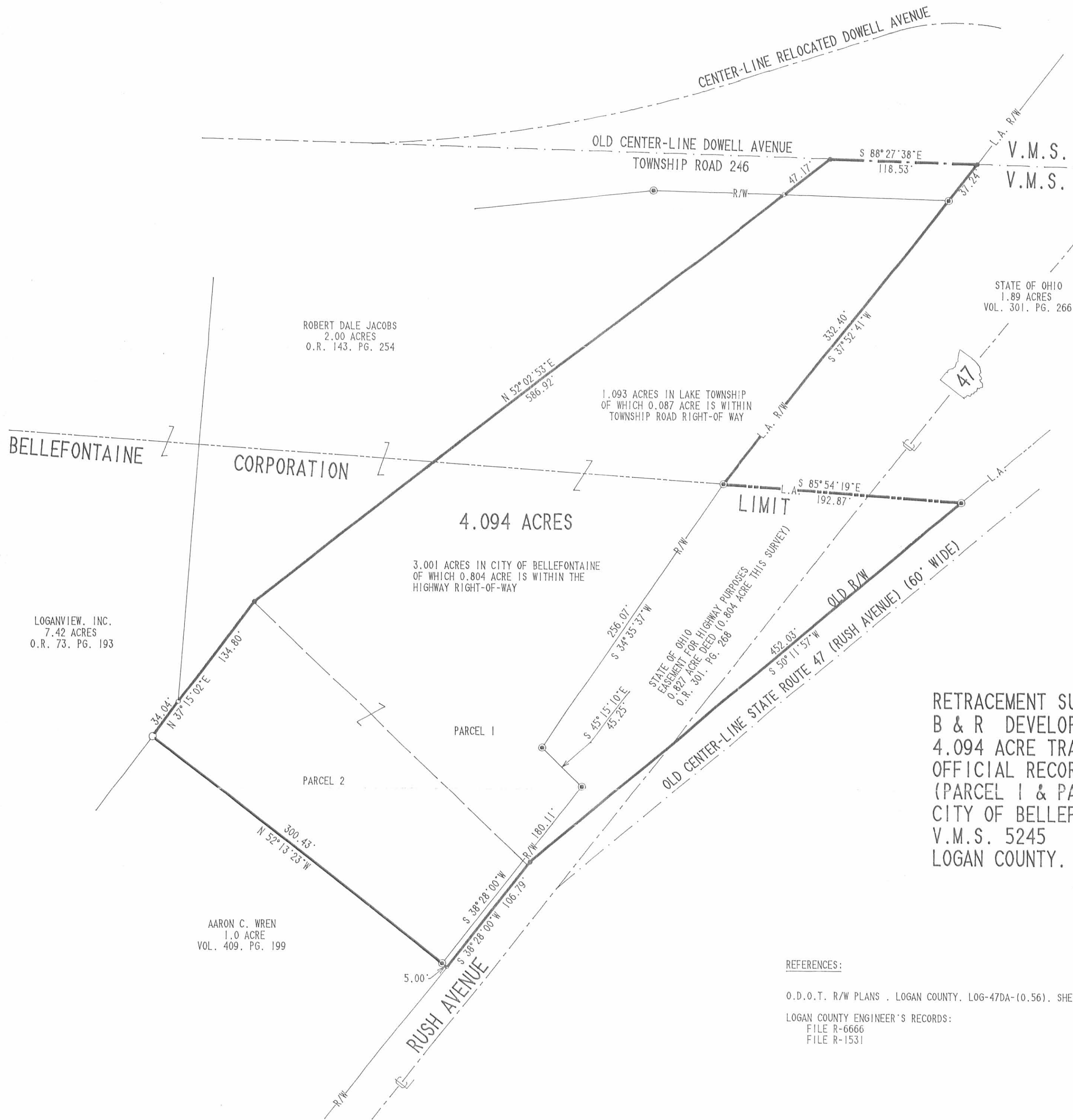


*Jeffrey I. Lee*  
Jeffrey I. Lee  
Professional Surveyor 6359  
October 8, 1992

L 1685

ORIGINAL STAMP IN GREEN

INDEXED ON MAP  
8755 2D



- LEGEND:
- 5/8" IRON ROD SET
  - 5/8" IRON ROD FOUND
  - ⊗ 1/2" IRON ROD FOUND
  - 1 1/2" IRON BAR FOUND
  - ⊙ CONC. RIGHT-OF-WAY MONUMENT FOUND
  - ° P.K. NAIL SET IN DRILL HOLE
- ALL IRON RODS SET ARE 5/8" x 30" REBAR WITH PLASTIC I.D. CAPS STAMPED "LEE PS6359"

RETRACEMENT SURVEY OF THE  
 B & R DEVELOPMENT. (AN OHIO PARTNERSHIP)  
 4.094 ACRE TRACT  
 OFFICIAL RECORD VOLUME 55, PAGE 15  
 (PARCEL 1 & PARCEL 2)  
 CITY OF BELLEFONTAINE AND LAKE TOWNSHIP  
 V.M.S. 5245  
 LOGAN COUNTY, OHIO

REFERENCES:  
 O.D.O.T. R/W PLANS . LOGAN COUNTY. LOG-47DA-(0.56). SHEET 136 OF 141  
 LOGAN COUNTY ENGINEER'S RECORDS:  
 FILE R-6666  
 FILE R-1531



SURVEYED BY:  
  
 JEFFREY I. LEE  
 PROFESSIONAL SURVEYOR 6359  
 OCTOBER 6, 1992

INDEXED ON MAP  
 8755 2P  
 INDEXED ON MAP

LEE SURVEYING & MAPPING CO.  
 143 East Columbus Avenue  
 BELLEFONTAINE, OHIO 43311  
 (513) 593-7335  
 D 204 ROBINSON L-1685-2



REC'D 7-19-10 SUM OK

# Lee Surveying and Mapping Co., Inc.

Land Surveys • Topography • Subdivisions • Construction Layout

117 N. Madriver St.  
Bellefontaine OH 43311



Phone: (937) 593-7335  
Fax: (937) 593-7444  
surveys@lsminc.us

## BARROWS & MEYER 2.090 ACRES

Lying in Virginia Military Survey 5245, City of Bellefontaine, Lake Township, Logan County, Ohio.

Being out of the Barrows & Meyer 4.094 acre tract as deeded and described in Official Record 172, Page 535 of the Logan County Records of Deeds and being more particularly described as follows:

Commencing on a 5/8 inch iron rod set on the north line of Virginia Military Survey 5245, the old center-line of Township Road 246 (Dowell Avenue) and the westerly limited access right-of-way line of Ohio Route 47.

THENCE, with the north line of Virginia Military Survey 5245 and the old center-line of Township Road 246, N 88°-27'-38"W, a distance of 118.53 feet to a 5/8 inch iron rod set.

THENCE, with the east line of the Robert Dale Jacobs 2.00 acre tract (O.R. 143, Pg. 254), S 52°-02'-53"W, a distance of 377.92 feet to a 5/8 inch iron rod set at the TRUE POINT OF BEGINNING, passing a 1/2 inch iron rod found at 47.17 feet.

THENCE, S 37°-04'-15"E, a distance of 295.48 feet to a point on the former westerly right-of-way of Rush Avenue (Ohio Route 47), passing a 5/8 inch iron rod set as reference at 288.48 feet.

THENCE, with the former westerly right-of-way of Rush Avenue, the following two courses:

S 50°-11'-57"W, a distance of 157.00 feet to a 5/8 inch iron rod set, passing a 5/8 inch iron rod set for reference at 30.37 feet.

S 38°-28'-00"W, a distance of 106.79 feet to a PK nail set in a drill hole.

THENCE, with the east line of the Blackacre, P.L.L., 0.988 acre tract (O.R. 236, Pg. 443), N 52°-13'-23"W, a distance of 300.43 feet to a 1-1/2 inch iron bar found, passing a concrete right-of-way monument found on the westerly limited access right-of-way line of Rush Avenue at 5.00 feet.

THENCE, with the easterly lines of the Loganview, Inc., 7.42 acre tract (O.R. 73, Pg. 193) and the aforesaid 2.00 acre tract, N 37°-15'-02"E, a distance of 134.80 feet to a 5/8 inch iron rod set.

8755 3D-1

# Lee Surveying and Mapping Co., Inc.

Land Surveys • Topography • Subdivisions • Construction Layout

117 N. Madriver St.  
Bellefontaine OH 43311



Phone: (937) 593-7335  
Fax: (937) 593-7444  
surveys@lsminc.us

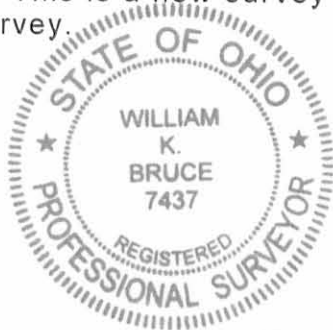
THENCE, with the east line of the said 2.00 acre tract, N 52°-02'-53"E, a distance of 209.00 feet to the point of beginning.

Containing 2.090 acres, of which 0.194 acre is within the right-of-way.

Property is subject to any and all previous easements and rights-of-way of record.

The basis for bearings is the center-line of Rush Avenue, being S 38°-28'-00"W, and all other bearings are from angles and distances measured in a field survey by Lee Surveying and Mapping Co., Inc. on May 7, 1997, revised August 11, 1997 and July 15, 2010.

This is a new survey description based on the existing plat of the above said field survey.



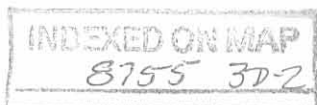
ORIGINAL STAMP IN GREEN

Description prepared by:

A handwritten signature in black ink that reads 'William K. Bruce'.

William K. Bruce  
Professional Surveyor 7437  
July 15, 2010

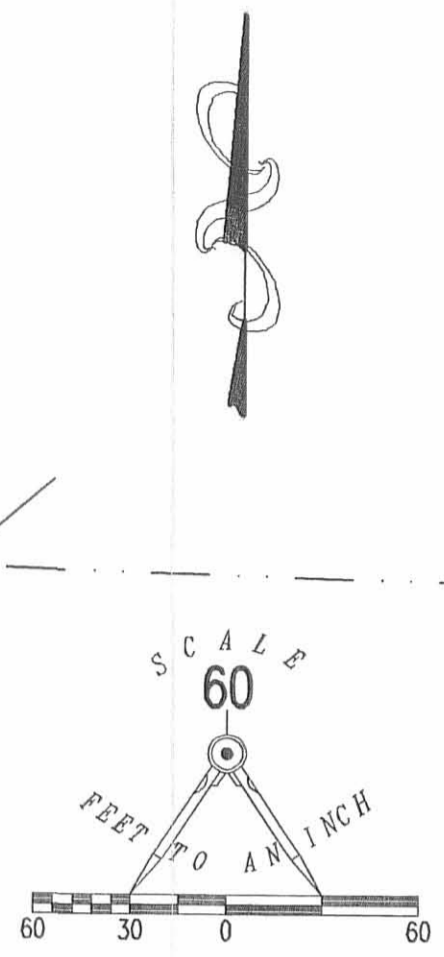
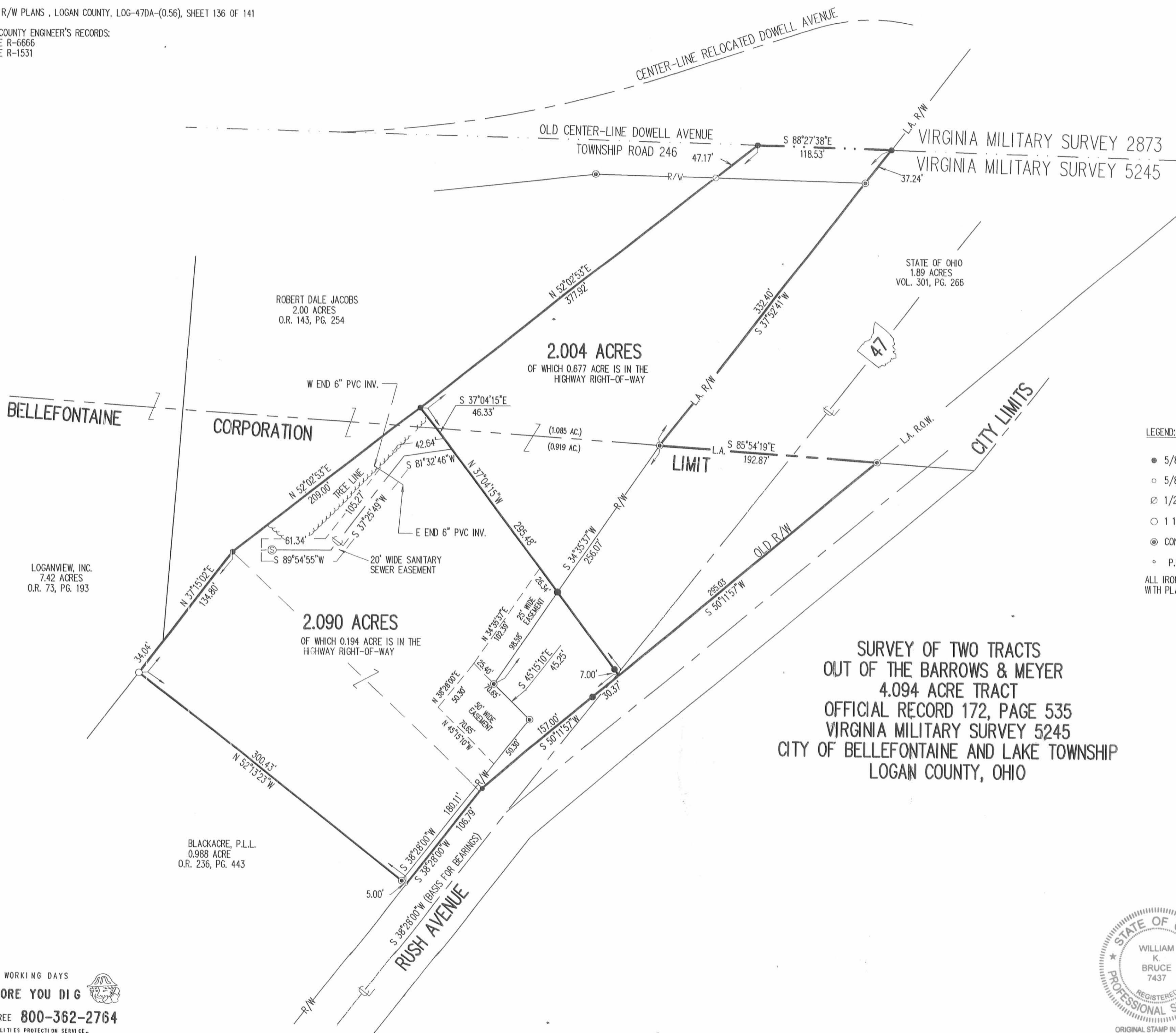
1685710



REFERENCES:

O.D.O.T. R/W PLANS, LOGAN COUNTY, LOG-47DA-(0.56), SHEET 136 OF 141

LOGAN COUNTY ENGINEER'S RECORDS:  
FILE R-6666  
FILE R-1531



LEGEND:

- 5/8" IRON ROD SET
  - 5/8" IRON ROD FOUND
  - ⊗ 1/2" IRON ROD FOUND
  - 1 1/2" IRON BAR FOUND
  - ⊙ CONC. RIGHT-OF-WAY MONUMENT FOUND
  - ⊙ P.K. NAIL SET IN DRILL HOLE
- ALL IRON RODS SET ARE 5/8" x 30" REBAR WITH PLASTIC I.D. CAPS STAMPED "LEE PS6359"

**SURVEY OF TWO TRACTS  
OUT OF THE BARROWS & MEYER  
4.094 ACRE TRACT  
OFFICIAL RECORD 172, PAGE 535  
VIRGINIA MILITARY SURVEY 5245  
CITY OF BELLEFONTAINE AND LAKE TOWNSHIP  
LOGAN COUNTY, OHIO**

SURVEYED BY:

*William K. Bruce*

WILLIAM K. BRUCE  
PROFESSIONAL SURVEYOR 7437  
MAY 7, 1997  
REVISED AUGUST 11, 1997  
REVISED JULY 15, 2010 TO SHOW BASIS OF BEARINGS.  
NO FIELD WORK PERFORMED.



COPYRIGHT 2010 BY:  
**LEE SURVEYING & MAPPING CO., INC.**  
117 North Madriver Street  
BELLEFONTAINE, OHIO 43311  
(937) 593-7335  
surveys@lsmcinc.us

KSS D0710 1685710 L-1685-2

2 WORKING DAYS  
**BEFORE YOU DIG**  
CALL TOLL FREE **800-362-2764**  
OHIO UTILITY PROTECTION SERVICE.

INDEXED ON MAP  
8755 3P

12-23-14  
APPROVED

# Lee Surveying and Mapping Co., Inc.

Land Surveys • Topography • Subdivisions • Construction Layout

117 N. Madriver St.  
Bellefontaine OH 43311



Phone: (937) 593-7335  
Fax: (937) 593-7444  
surveys@lsminc.us

## MARY RUTAN HOSPITAL INGRESS/EGRESS EASEMENT

Lying in Virginia Military Survey 5245, City of Bellefontaine, Lake Township, Logan County, Ohio.

Being an ingress/egress easement of various widths over a portion of the Mary Rutan Hospital 2.090 acre tract as deeded and described in Official Record 1225, Page 269 of the Logan County Records of Deeds and being more particularly described as follows:

Commencing on a concrete right-of-way monument found at Station 766+01.2 / 35 feet left (ODOT right-of-way plans LOG-47DA- (0.56), Sheet 136 of 141) on the west right-of-way of Ohio Route 47 (Rush Avenue).

THENCE, with the west right-of-way of Ohio Route 47 (variable widths), S 38°-28'-00"W, a distance of 25.15 feet to a point on the center-line of a 40 feet wide ingress/egress easement at the TRUE POINT OF BEGINNING.

THENCE, with the center-line of the 40 feet wide ingress/egress easement N 55°-28'-34"W, a distance of 70.33 feet to a point at the terminus of the 40 feet wide ingress/egress easement and the beginning point of the 25 feet wide ingress/egress easement.

THENCE, with the center-line of the 25 feet wide ingress/egress easement, the following four courses:

N 45°-15'-09"W, a distance of 31.44 feet to a point.

N 22°-18'-06"W, a distance of 9.18 feet to a point.

N 33°-40'-08"E, a distance of 127.34 feet to a point.

N 42°-15'-48"E, a distance of 15.90 feet to a point on the west line of the Shady Property Management, Ltd., 2.004 acre tract (O.R. 712, Pg. 733) at the terminus of said easement.

The sidelines of said easements to be shortened or prolonged to meet at angle point intersections.

Property is subject to any and all previous easements and rights-of-way of record.

The basis for bearings is the west right-of-way of Ohio Route 47, being N 38°-28'-00"E, and all other bearings are from angles and distances measured in a field survey by Lee Surveying and Mapping Co., Inc. on December 14, 2016.



Description prepared by:

*Jeffrey I. Lee*  
Jeffrey I. Lee  
Professional Surveyor 6359  
December 16, 2016

ORIGINAL STAMP IN GREEN

16851116

INDEXED ON MAP  
0755 4D

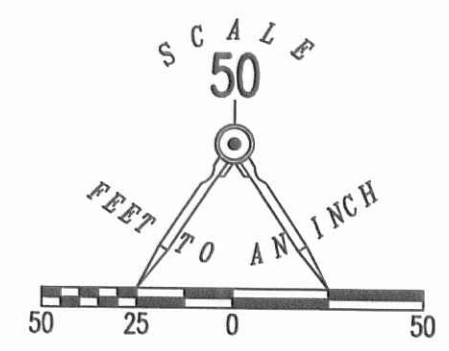
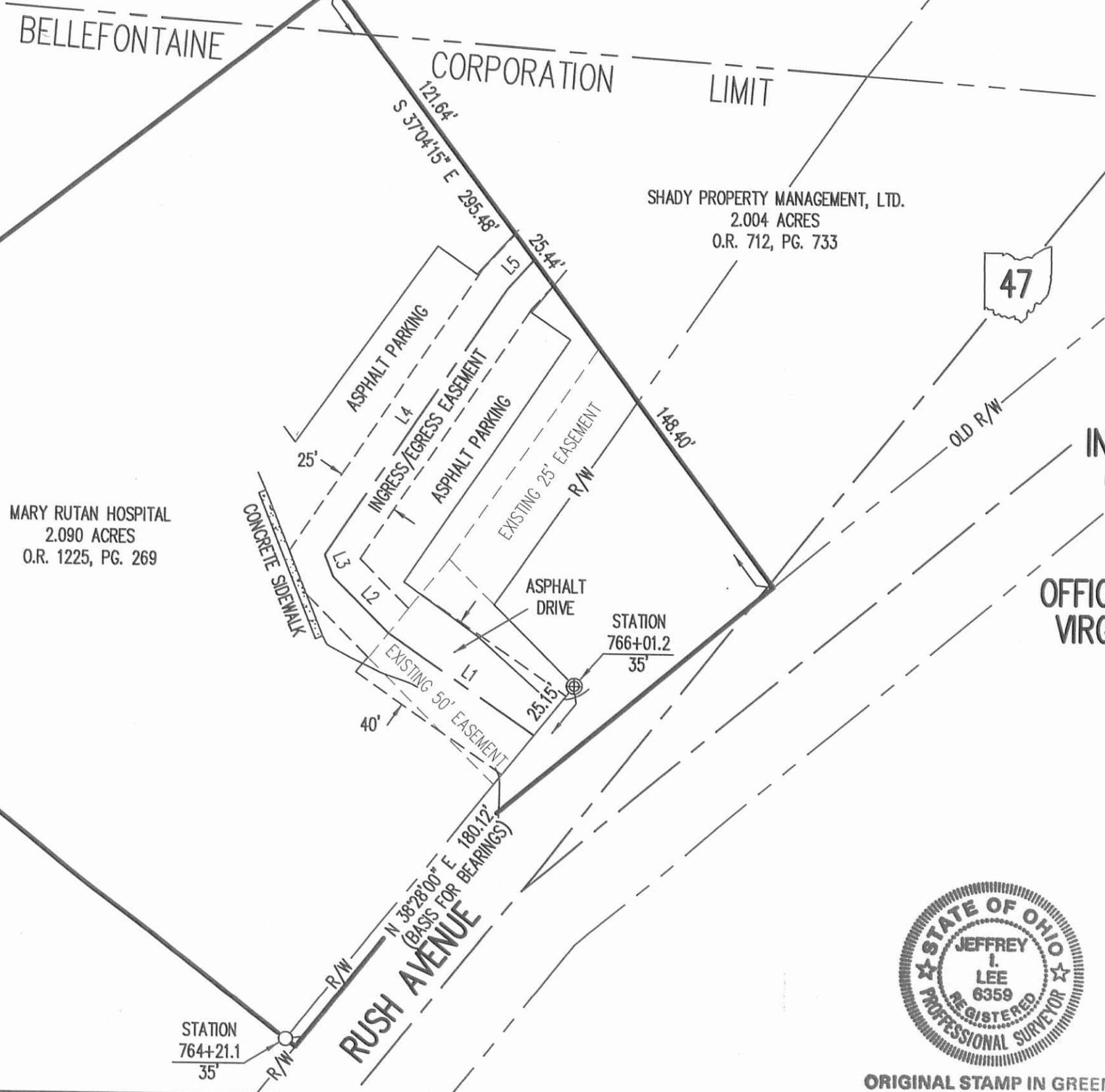
12-23-16  
**APPROVED**

CENTER-LINE OF 40' INGRESS/EGRESS EASEMENT

| LINE | BEARING       | DISTANCE |
|------|---------------|----------|
| L1   | N 55°28'34" W | 70.33'   |

CENTER-LINE OF 25' INGRESS/EGRESS EASEMENT

| LINE | BEARING       | DISTANCE |
|------|---------------|----------|
| L2   | N 45°15'09" W | 31.44'   |
| L3   | N 22°18'06" W | 9.18'    |
| L4   | N 33°40'08" E | 127.34'  |
| L5   | N 42°15'48" E | 15.90'   |



LEGEND:  
 ⊕ CONCRETE R/W MONUMENT FOUND  
 ○ 5/8 INCH IRON ROD FOUND

**INGRESS/EGRESS EASEMENT  
 OVER A PORTION OF THE  
 MARY RUTAN HOSPITAL  
 2.090 ACRE TRACT  
 OFFICIAL RECORD 1225, PAGE 269  
 VIRGINIA MILITARY SURVEY 5245  
 CITY OF BELLEFONTAINE  
 LAKE TOWNSHIP  
 LOGAN COUNTY, OHIO**

SURVEYED BY:  
  
 JEFFREY I. LEE  
 PROFESSIONAL SURVEYOR 6359  
 DECEMBER 14, 2016



ORIGINAL STAMP IN GREEN

COPYRIGHT 2016 BY:  
**LEE SURVEYING & MAPPING CO., INC.**  
 117 North Madriver Street  
 BELLEFONTAINE, OHIO 43311  
 (937) 593-7335  
 WWW.LSMINC.US  
 surveys@lsminc.us  
 KSS D1116 16851116 L-1685-3

**REFERENCE:**  
 OHIO DEPARTMENT OF TRANSPORTATION RIGHT-OF-WAY PLANS, LOG-47DA- (0.56), SHEET 136 OF 141

THIS SURVEY WAS PREPARED IN THE ABSENCE OF A COMPLETE AND ACCURATE TITLE SEARCH AND DOES NOT GUARANTEE TITLE.

2 WORKING DAYS  
**BEFORE YOU DIG**  
 CALL TOLL FREE **800-362-2764**  
 OHIO UTILITIES PROTECTION SERVICE.

INDEXED ON MAP  
 8755 4P