

SURVEY OF
 LOT NO. 368
 BELLEFONTAINE, OHIO

MARCH 30, 1974
 SCALE 1" = 50'

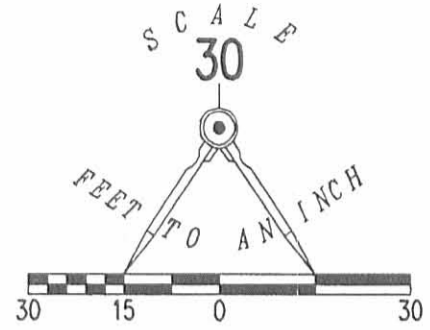
INDEXED ON MAP
 9041 IP

DAN L. DODSON
 REG. SURVEYOR 4270
 BELLEFONTAINE, O
 BK. 20/49

REV'D 4-16-07 SMJ/OK

LEGEND:

- ⊙ 3/4 INCH IRON ROD FOUND
- ⊕ SURVEY TACK ON SURFACE OF ROAD OVER 1-1/2 INCH IRON PIPE FOUND
- 5/8 INCH IRON ROD FOUND
- 5/8 INCH IRON ROD SET



16.5' ALLEY

S 89°39'24" E 285.01'

S 89°39'24" E
50.00'

DAVID E. RITTER
PART OF LOTS 371 & 370
O.R. 712, PG. 320

KAREN L. COONS
PART OF LOTS 371 & 370
O.R. 609, PG. 409

STANLEY STREET (40')

(BASIS FOR BEARINGS)
N 00°00'00" E

256.82'

SHERI L. TITUS
PART OF LOTS 371 & 370
O.R. 595, PG. 70

LOT 371
LOT 370

JOHN R. AIKEN
PART OF LOT 370
O.R. 791, PG. 906

N 00°01'22" W
218.91'

LOT 369

TRACY L. PRATER AND
CANDICE J. HITT
O.R. 585, PG. 498

219.09'

S 00°01'22" E

LOT 368

2' EASEMENT
O.R. 585, PG. 498
TRACT II

50.00'
N 89°27'10" W

30.00'

96.90'
S 89°27'10" E

CHILLICOTHE AVENUE (60')

RETRACEMENT SURVEY OF THE
TRACY L. PRATER AND
CANDICE J. HITT
LOT 369

NELSON AND ROBINSON PLAT
PLAT CABINET A, SLIDE 7
OFFICIAL RECORD 585, PAGE 498
CITY OF BELLEFONTAINE
LAKE TOWNSHIP
LOGAN COUNTY, OHIO

SURVEYED BY:

William K. Bruce
WILLIAM K. BRUCE
PROFESSIONAL SURVEYOR 7437
APRIL 12, 2007



COPYRIGHT 2007 BY:
LEE SURVEYING & MAPPING CO., INC.
117 North Madriver Street
BELLEFONTAINE, OHIO 43311
(937) 593-7335
surveys@lsminc.us

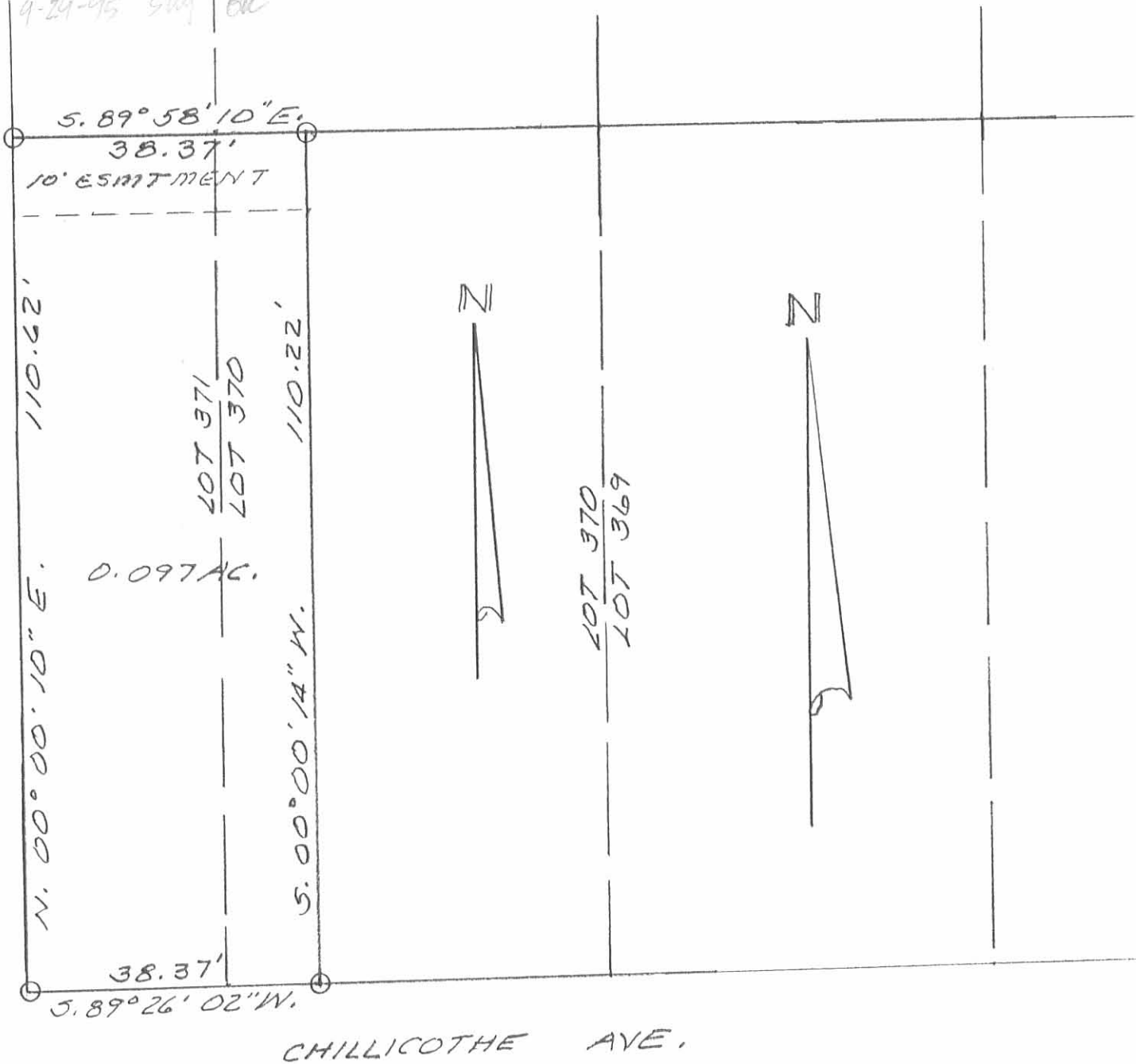
INDEXED ON MAP ORIGINAL STAMP IN GREEN
9041 2P

2 WORKING DAYS
BEFORE YOU DIG
CALL TOLL FREE 800-362-2764
OHIO UTILITIES PROTECTION SERVICE.

KSR D0407 4402047 L-4402-3

REC'D 9-29-95 SWY ON

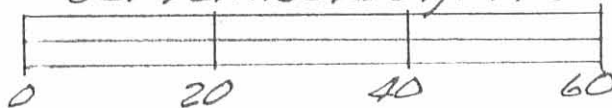
STANLEY STREET (40')



LEGEND:

○ = 5/8" IRON BAR SET

LAKE TWP., LOGAN COUNTY, OHIO
 SURVEY OF PART OF LOTS 370 & 371,
 NELSONS & ROBINSON'S ADDITION TO THE
 CITY OF BELLEFONTAINE, OHIO - SLIDE
 CABINET A. FOR BARRY VOSS.
 SEPTEMBER 29, 1995



Leslie H. Geeslin
 LESLIE H. GEESLIN
 RUSHSVLVANIA, OHIO
 PH 513-468-2793

INDEXED ON MAP
 9041 3P

REC'D 4-29-09 SUM OK

Lee Surveying and Mapping Co., Inc.

Land Surveys • Topography • Subdivisions • Construction Layout

117 N. Madriver St.
Bellefontaine OH 43311



Phone: (937) 593-7335
Fax: (937) 593-7444

surveys@lsminc.us

RITTER EASEMENT AREA

Lying in the City of Bellefontaine, Lake Township, Logan County, Ohio.

Being an easement over a portion of the David E. Ritter and Alissa L. Ritter part of Lots 370 & 371 of the Nelson and Robinson Plat (Plat Cabinet A, Slide 7) as deeded and described in Official Record 712, Page 320 of the Logan County Records of Deeds and being more particularly described as follows:

Commencing on a survey tack found on the surface of the road over a 1-1/2 inch iron pipe found on the intersection of the center-lines of Chillicothe Avenue and Stanley Street.

THENCE, with the center-line of Stanley Street (40 feet wide), N 00°-00'-00"E, a distance of 194.20 feet to a point.

THENCE, N 90°-00'-00"E, a distance of 20.00 feet to a point of the east right-of-way of Stanley Street at the TRUE POINT OF BEGINNING.

THENCE, with the east right-of-way of Stanley Street, N 00°-00'-00"E, a distance of 4.84 feet to a point of the edge of an asphalt driveway.

THENCE, with the edge of the asphalt driveway, S 87°-06'-08"E, a distance of 34.59 feet to a point.

THENCE, N 89°-53'-45"E, a distance of 20.01 feet to a point.

THENCE, S 00°-00'-00"W, a distance of 3.13 feet to a point.

THENCE, with the north line of the Karen L. Coons part of Lots 371 & 370 (O.R. 609, Pg. 409), S 90°-00'-00"W, a distance of 54.55 feet to the point of beginning.

The basis for bearings is the center-line line of Stanley Street, being N 00°-00'-00"E, and all other bearings are from angles and distances measured in a field survey by Lee Surveying and Mapping Co., Inc. on April 24, 2009.

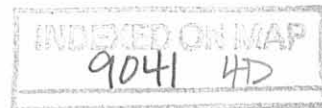


ORIGINAL STAMP IN GREEN

Description prepared by:

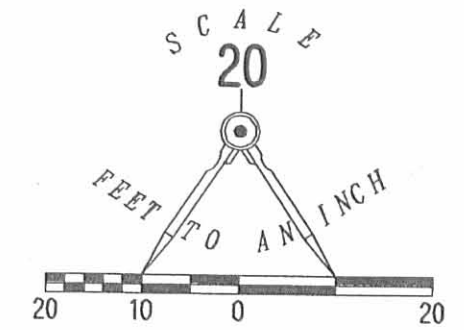
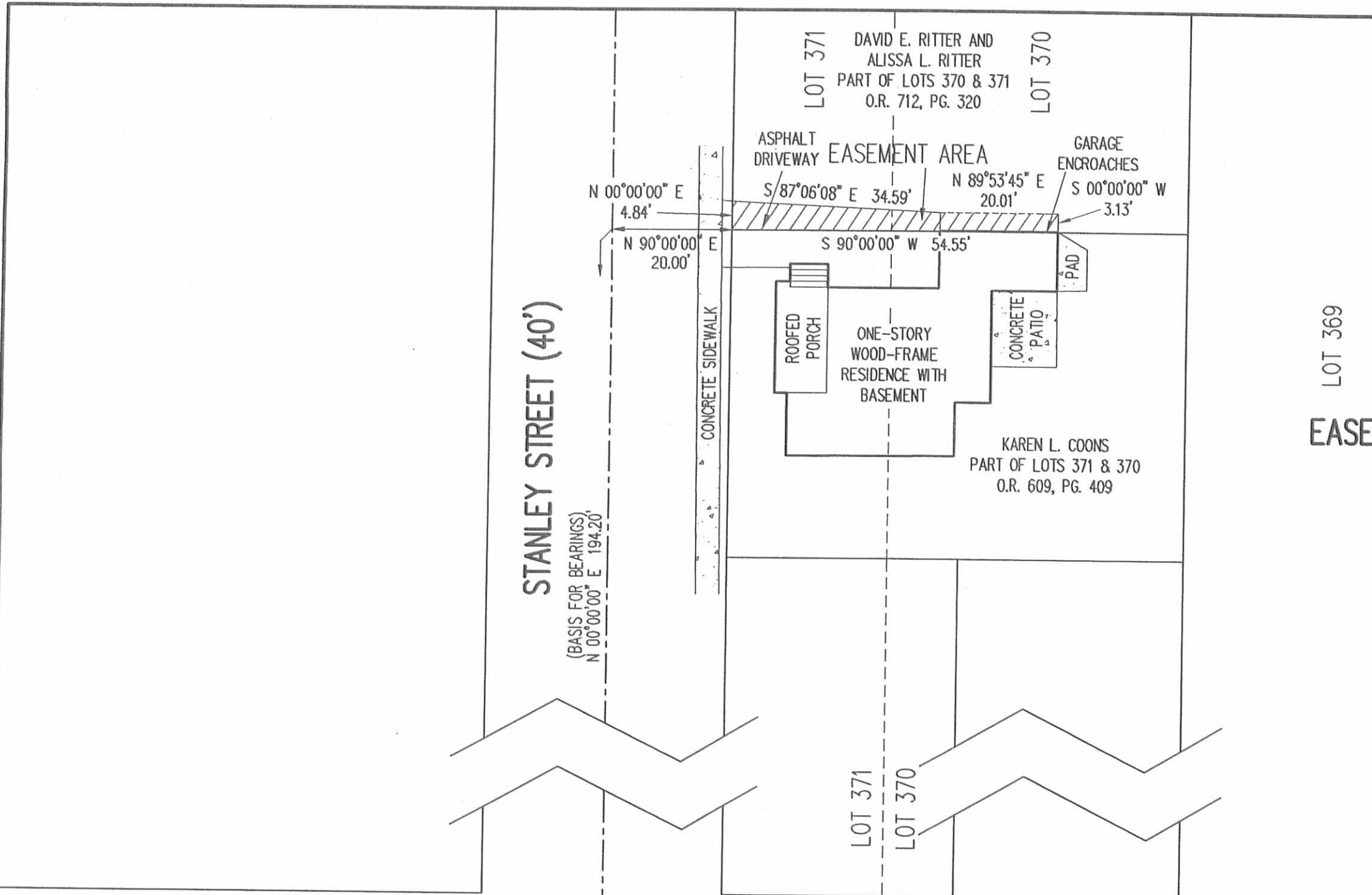
William K. Bruce

William K. Bruce
Professional Surveyor 7437
April 27, 2009



L-4783

REV'D 4-29-09 SMM/OK



LEGEND:
 ⊕ SURVEY TACK FOUND ON SURFACE OF ROAD
 OVER 1-1/2 INCH IRON PIPE FOUND

LOT 369

EASEMENT SURVEY OVER A PORTION OF THE
 DAVID E. RITTER AND
 ALISSA L. RITTER
 PART OF LOTS 370 & 371
 NELSON AND ROBINSON PLAT
 PLAT CABINET A, SLIDE 7
 OFFICIAL RECORD 712, PAGE 320
 CITY OF BELLEFONTAINE
 LAKE TOWNSHIP
 LOGAN COUNTY, OHIO

MAP PREPARED BY:

William K. Bruce
 WILLIAM K. BRUCE
 PROFESSIONAL SURVEYOR 7437
 APRIL 27, 2009



ORIGINAL STAMP IN GREEN

COPYRIGHT 2009 BY:
 LEE SURVEYING & MAPPING CO., INC
 117 North Madriver Street
 BELLEFONTAINE, OHIO 43311
 (937) 593-7335
 surveys@lsminc.us
 KSS D0409 4783049 L-4783-3

2 WORKING DAYS
BEFORE YOU DIG
 CALL TOLL FREE **800-362-2764**
 OHIO UTILITIES PROTECTION SERVICE

INDEXED ON MAP
 9041 4P

LOT 368
BELLEFONTAINE, OHIO

SEE BK 17/35

INDEXED ON MAP
9041

Dodson
Artis
McKurdy

Mar. 30, 1974
rain

49

