

Dec 6-14-99 Jan OKGCH  
CORRECTIONS

MAP ROOM

Survey of Lot No. 184  
Part B  
City of Bellefontaine

The following described real estate situated in the City of Bellefontaine, Township of Lake, County of Logan, State of Ohio and being a part of Lot No. 184 of the Original Plat of Bellefontaine as recorded in Plat Cabinet A Slide 1 (8-12-1822) and now being more particularly described as follows:

Beginning for reference at a 5/8" x 30" Rebar set at the north-east corner to Lot No. 184, at the intersection of the south line of East Chillicothe Avenue (60 feet wide) and the west line of South Madrivier Street (60 feet wide);

Thence with the east line of Lot No. 184 and the west line of South Madrivier Street, S. 0°13'00" E. 119.81 feet to a 3/4 inch Iron Pipe found at the northeast corner to that part of Lot No. 184 in the name of Ralph D. English as recorded in Deed Volume No. 378 Page 871 (9-6-1978) and being the southeast corner to that part of Lot No. 184 in the name of Ronald P. Shoe as recorded in Official Record No. 5 Page 213 (7-23-1985) and being the true place of beginning for this survey, (Note: The east line of Lot No. 184 and the west line of South Madrivier Street is the Basis of Bearing for this survey-S. 0°13'00" E.);

Thence continuing with the east line of Lot No. 184 and the west line of South Madrivier Street, S. 0°13'00" E. 54.91 feet to a 5/8" x 30" Rebar set at the southeast corner to said English's tract and the north-east corner to Michael L. Levan's part of Lot No. 184 as recorded in Deed Volume No. 293 Page 8 (12-4-1963);

Thence with the line between English and Levan, S. 89°30'00" W. 54.76 feet to a point next to a concrete wall, (Note: A 5/8" x 30" Rebar set S. 89°30'00" W. 0.30 feet of said point for reference), this point is on the line between Lots No. 184 and 175 and being the southwest corner to English's tract and the northwest corner to said Levan's tract;

Thence with the line between Lots No. 184 and 175, N. 0°14'00" W. 54.91 feet to a 3/4 inch Iron Pipe found at the northwest corner to English's tract and the southwest corner to Shoe's tract;

Thence with the line between English and Shoe, N. 89°30'00" E. 54.78 feet to the true place of beginning, containing 3,007.421 square feet or 0.069 Acres, more or less.

This description is the result of a field survey made by me on May 26, 1999.



*Daniel E. Gilbert*  
DANIEL E. GILBERT, P.S.  
REG. SUR. NO. 5402  
400 N. PARK ST.  
BELLEFONTAINE, OHIO 43311  
TELEPHONE: 1 (606) 593-1428  
937

INDEXED ON MAP  
9252 ID

E. CHILLICOTHE AVE.

N. 89°-30'-00" E.

- 60'

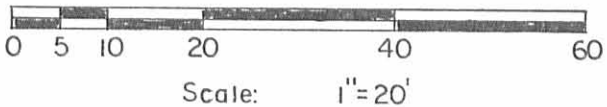
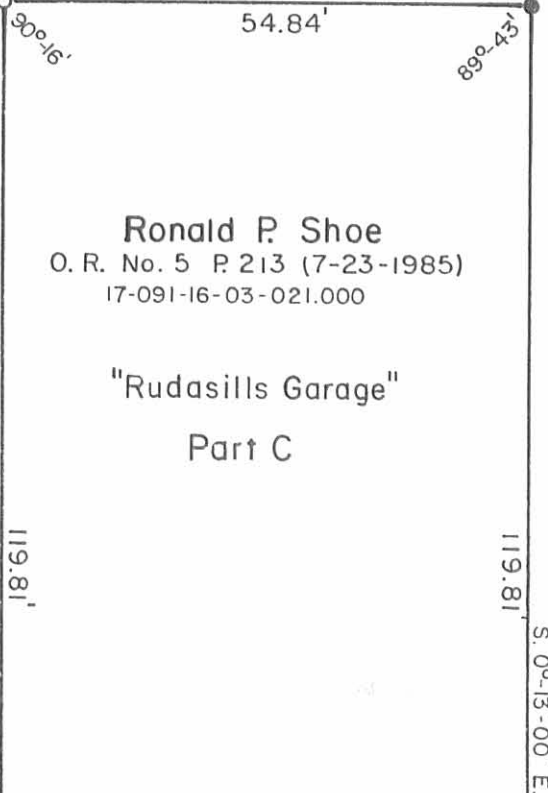
S. MADRIVER ST. - 60'

S. 0°-13'-00" E.

Note: 3/4" Iron Pipe Fd.  
Bent, Set 5/8" x 30"  
Rebar in its place.

Ronald P. Shoe  
O. R. No. 5 P 213 (7-23-1985)  
17-091-16-03-021.000

"Rudasills Garage"  
Part C



175

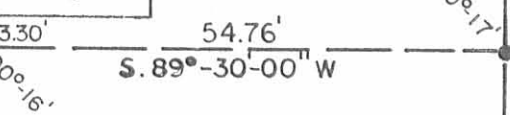
184

Ralph D. English  
D. Vol. No. 378 P 871 (9-6-1978)  
17-091-16-03-020.000

Part B  
3,007.421<sup>sq</sup>  
or  
0.069 Acres

Existing  
One Car  
Garage

Note: This garage extends  
0.60' into Lot 175.



Michael L. Levan et ux  
D. Vol. No. 293 P. 8 (12-4-1963)  
17-091-16-03-019.000

Part A

16.50'

ALLEY

Reference:

Bellefontaine Original Plat.  
Plat Cabinet A, Slide 1 (8-12-1822).



Survey of Lot No. 184, Part B.  
City of Bellefontaine, Lake Township,  
Logan County, Ohio.

DATE: 5-26-1999

APPROVED BY:

DRAWN BY: DEG

REVISIONS:

SCALE: 1" = 20'

Daniel E. Gilbert, P.S.  
Reg. Sur. No. 5402

DRAWING NUMBER  
099-019

INDEXED ON MAP  
9252 1P