

Receipt 12/29/99 OKGCH

Lee Surveying and Mapping Co., Inc.

Land Surveys • Topography • Subdivisions • Construction Layout

117 N. Madriver St.
Bellefontaine OH 43311



Phone: (937) 593-7335
Fax: (937) 593-7444

BELLEFONTAINE LOT 25 10 FEET WIDE INGRESS/EGRESS EASEMENT

Lying in the City of Bellefontaine, Lake Township, Logan County, Ohio.

Being a 10 feet wide ingress/egress easement over part of Lot 80 of the City of Bellefontaine as described in Plat Cabinet A, Slide 1 of the Logan County Records of Plats and being more particularly described as follows:

Beginning at a 1/2 inch iron pipe found on the south right-of-way of Chillicothe Avenue at the northeast corner of Lot 80.

THENCE, with the south right-of-way of Chillicothe Avenue, (60 feet wide), N 89°-50'-47" W, a distance of 7.41 feet to a point on the center-line of the easement at the TRUE POINT OF BEGINNING.

THENCE, with the center-line of the easement, the following three (3) courses:

S 0°-25'-35" E, a distance of 72.25 feet to a point.

S 42°-52'-06" W, a distance of 35.64 feet to a point.

S 0°-02'-38" E, a distance of 121.33 feet to a point on the south line of Lot 80 and the terminus of the easement.

The basis for bearings is the south right-of-way of Chillicothe Avenue, being N 89°-50'-47" W, and all other bearings are from angles and distances measured in a field survey by Lee Surveying and Mapping Co., Inc. on November 15, 1999

Description prepared by:



ORIGINAL STAMP IN GREEN

A handwritten signature in black ink, appearing to read 'J. Lee'.

Jeffrey I. Lee
Professional Surveyor 6359
December 10, 1999

L-2865

9297 10-1



Lee Surveying and Mapping Co., Inc.

Land Surveys • Topography • Subdivisions • Construction Layout

117 N. Madriver St.
Bellefontaine OH 43311



Phone: (937) 593-7335
Fax: (937) 593-7444

BELLEFONTAINE LOT 25 PARKING EASEMENT

Lying in the City of Bellefontaine, Lake Township, Logan County, Ohio.

Being a parking easement over part of Lot 80 of the City of Bellefontaine as described in Plat Cabinet A, Slide 1 of the Logan County Records of Plats and being more particularly described as follows:

Beginning at a 1/2 inch iron pipe found on the south right-of-way of Chillicothe Avenue, (60 feet wide), at the northeast corner of Lot 80.

THENCE, with the east line of Lot 80, S 0°-02'-38" E, a distance of 103.18 feet to a point at the TRUE POINT OF BEGINNING.

THENCE, with the east line of Lot 80, S 0°-02'-38" E, a distance of 116.56 feet to a point on the north line of a 16.5 feet wide alley at the southeast corner of Lot 80.

THENCE, with the north line of a 16.5 feet wide alley and the south line of Lot 80, N 89°-51'-42" W, a distance of 55.15 feet to a point on the southwest corner of Lot 80.

THENCE, with the west line of Lot 80, N 0°-03'-11" W, a distance of 38.05 feet to a point.

THENCE, N 88°-48'-59" E, a distance of 33.06 feet to a MAG nail set, passing a 5/8 inch iron rod set at 3.72 feet.

THENCE, N 1°-06'-32" E, a distance of 79.03 feet to a MAG nail set.

THENCE, S 86°-20'-06" E, a distance of 20.55 feet to the point of beginning, passing a MAG nail set at 15.69 feet.

Containing 0.087 acre.

The basis for bearings is the south right-of-way of Chillicothe Avenue, being N 89°-50'-47" W, and all other bearings are from angles and distances measured in a field survey by Lee Surveying and Mapping Co., Inc. on November 15, 1999

Description prepared by:

A handwritten signature in black ink, appearing to read 'J. Lee', is written over the typed name.

Jeffrey I. Lee
Professional Surveyor 6359
December 10, 1999
Revised December 28, 1999

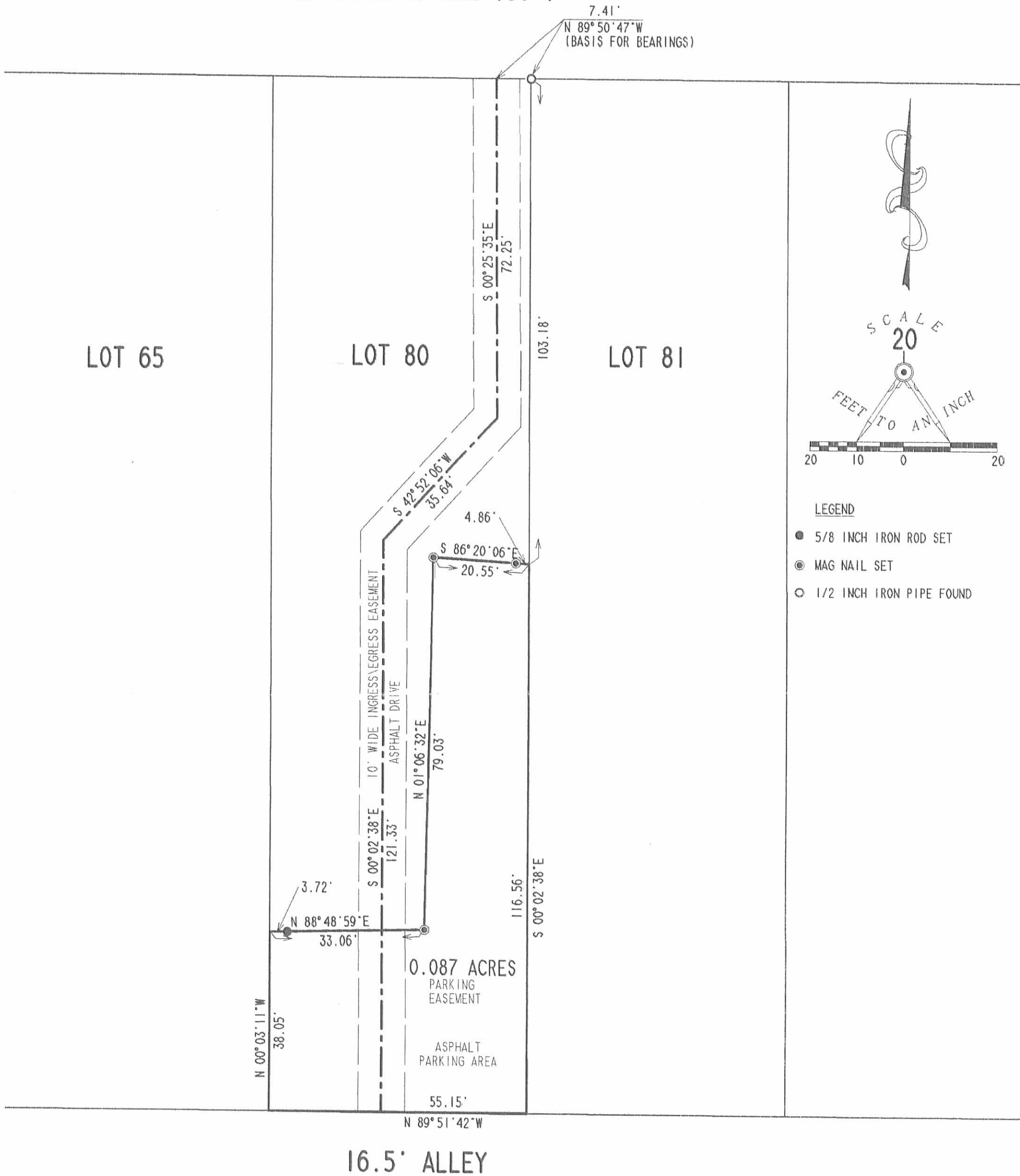


ORIGINAL STAMP IN GREEN

L-2865

9297 10-2

CHILLICOTHE AVENUE (60')



SURVEY OF TWO EASEMENTS OVER
LOT 80 OF THE CITY OF BELLEFONTAINE
PLAT CABINET A, SLIDE I
LAKE TOWNSHIP
LOGAN COUNTY, OHIO



SURVEYED BY:
Jeffrey I. Lee
JEFFREY I. LEE
PROFESSIONAL SURVEYOR 6359
NOVEMBER 15, 1999

COPYRIGHT 1999 BY:
LEE SURVEYING & MAPPING CO., INC.
117 North Madriver Street
BELLEFONTAINE, OHIO 43311
(937) 593-7335

2 WORKING DAYS
BEFORE YOU DIG
CALL TOLL FREE **800-362-2764**
OHIO UTILITIES PROTECTION SERVICE.

9297 IP

ORIGINAL STAMP IN GREEN