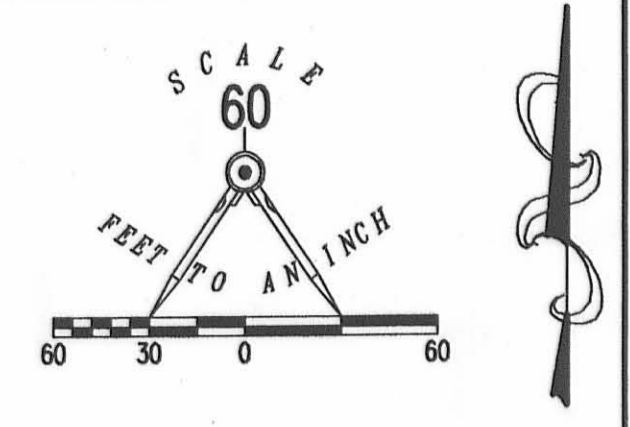


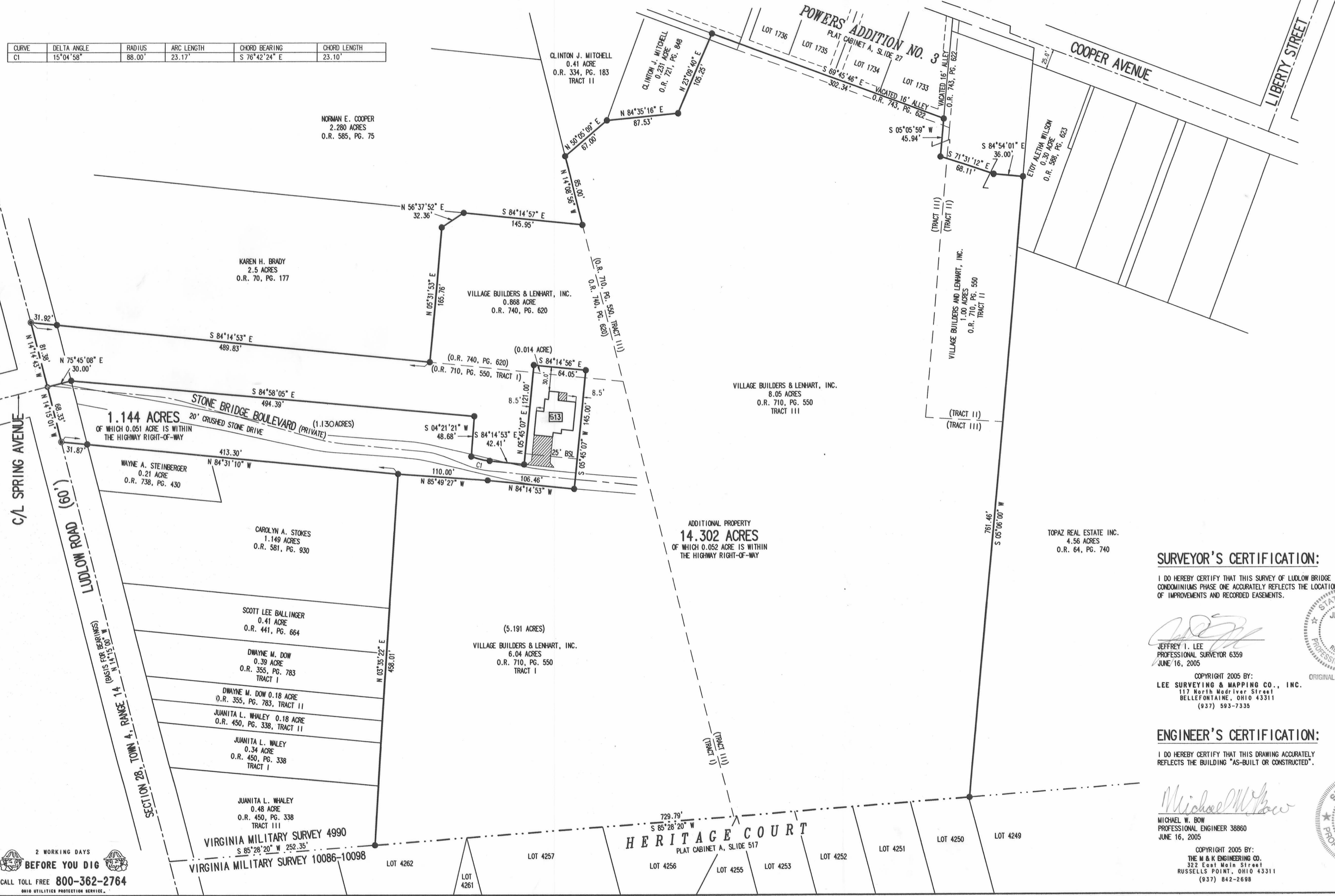
EXHIBIT B TO DECLARATION AND BYLAWS OF LUDLOW BRIDGE CONDOMINIUMS

6.04 ACRE TRACT, 1.00 ACRE TRACT, 8.05 ACRE TRACT OFFICIAL RECORD 550, PAGE 550, TRACTS I, II AND III
0.868 ACRE TRACT OFFICIAL RECORD 740, PAGE 620
VIRGINIA MILITARY SURVEY 4990 CITY OF BELLEFONTAINE LAKE TOWNSHIP LOGAN COUNTY, OHIO



- LEGEND:
- ⊙ 1-1/4 INCH IRON PIPE FOUND
 - 5/8 INCH IRON ROD SET
 - ⊙ MAG NAIL SET
 - ▨ LIMITED COMMON AREA
 - 111 UNIT NUMBER
 - BSL = BUILDING SETBACK LINE

CURVE	DELTA ANGLE	RADIUS	ARC LENGTH	CHORD BEARING	CHORD LENGTH
C1	15°04'58"	88.00'	23.17'	S 76°42'24" E	23.10'

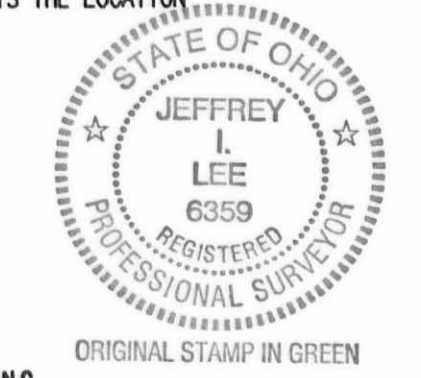


- NOTES:
1. EASEMENTS SHOWN ARE AS PROVIDED BY DEVELOPER. THE SURVEYOR DID NOT SEARCH FOR ADDITIONAL EASEMENTS.
 2. THE WORD "CERTIFY" IS INTENDED TO BE AS DEFINED IN OHIO ADMINISTRATIVE CODE 4733-35-04(C).
 3. BUILDING HEIGHT FROM PEAK OF ROOF TO GROUND FOR UNIT 513 IS 20.4'.

SURVEYOR'S CERTIFICATION:

I DO HEREBY CERTIFY THAT THIS SURVEY OF LUDLOW BRIDGE CONDOMINIUMS PHASE ONE ACCURATELY REFLECTS THE LOCATION OF IMPROVEMENTS AND RECORDED EASEMENTS.

Jeffrey I. Lee
JEFFREY I. LEE
PROFESSIONAL SURVEYOR 6359
JUNE 16, 2005



COPYRIGHT 2005 BY:
LEE SURVEYING & MAPPING CO., INC.
117 North Madriver Street
BELLEFONTAINE, OHIO 43311
(937) 593-7335

ENGINEER'S CERTIFICATION:

I DO HEREBY CERTIFY THAT THIS DRAWING ACCURATELY REFLECTS THE BUILDING "AS-BUILT OR CONSTRUCTED".

Michael W. Bow
MICHAEL W. BOW
PROFESSIONAL ENGINEER 38860
JUNE 16, 2005



COPYRIGHT 2005 BY:
THE M & K ENGINEERING CO.
322 East Main Street
RUSSELLS POINT, OHIO 43311
(937) 842-2698

APPROVED BY THE BELLEFONTAINE PLANNING COMMISSION
THIS 6th DAY OF July, 2005.
F. N. Davis
DIRECTOR, PLANNING COMMISSION
PRE-APPROVAL *Suzanne M. Harty*
PLAT CHECKED *Jan C. Harty* 7-7-05
TRANSFERRED THIS 1st DAY OF July, 2005
Nickie E. Grodz
AUDITOR, LOGAN COUNTY, OHIO
RECORDED IN PLAT CABINET B, SLIDE 98A
RECEIVED FOR RECORD AT 10:34 O'CLOCK P.M.
THIS 7th DAY OF July, 2005
Linda Hanson
RECORDER, LOGAN COUNTY, OHIO

2 WORKING DAYS
BEFORE YOU DIG
CALL TOLL FREE 800-362-2764
OHIO UTILITIES PROTECTION SERVICE

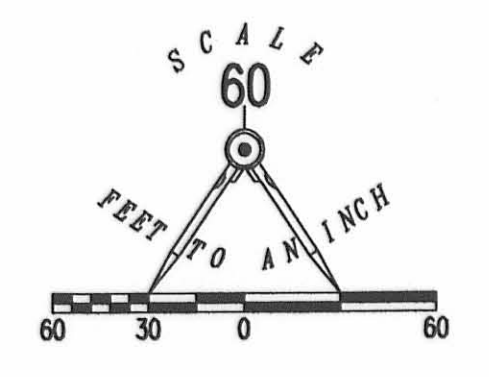
2005065288

EXHIBIT B TO DECLARATION AND BYLAWS OF LUDLOW BRIDGE CONDOMINIUMS - PHASE II

6.04 ACRE TRACT, 1.00 ACRE TRACT, 8.05 ACRE TRACT OFFICIAL RECORD 550, PAGE 550, TRACTS I, II AND III

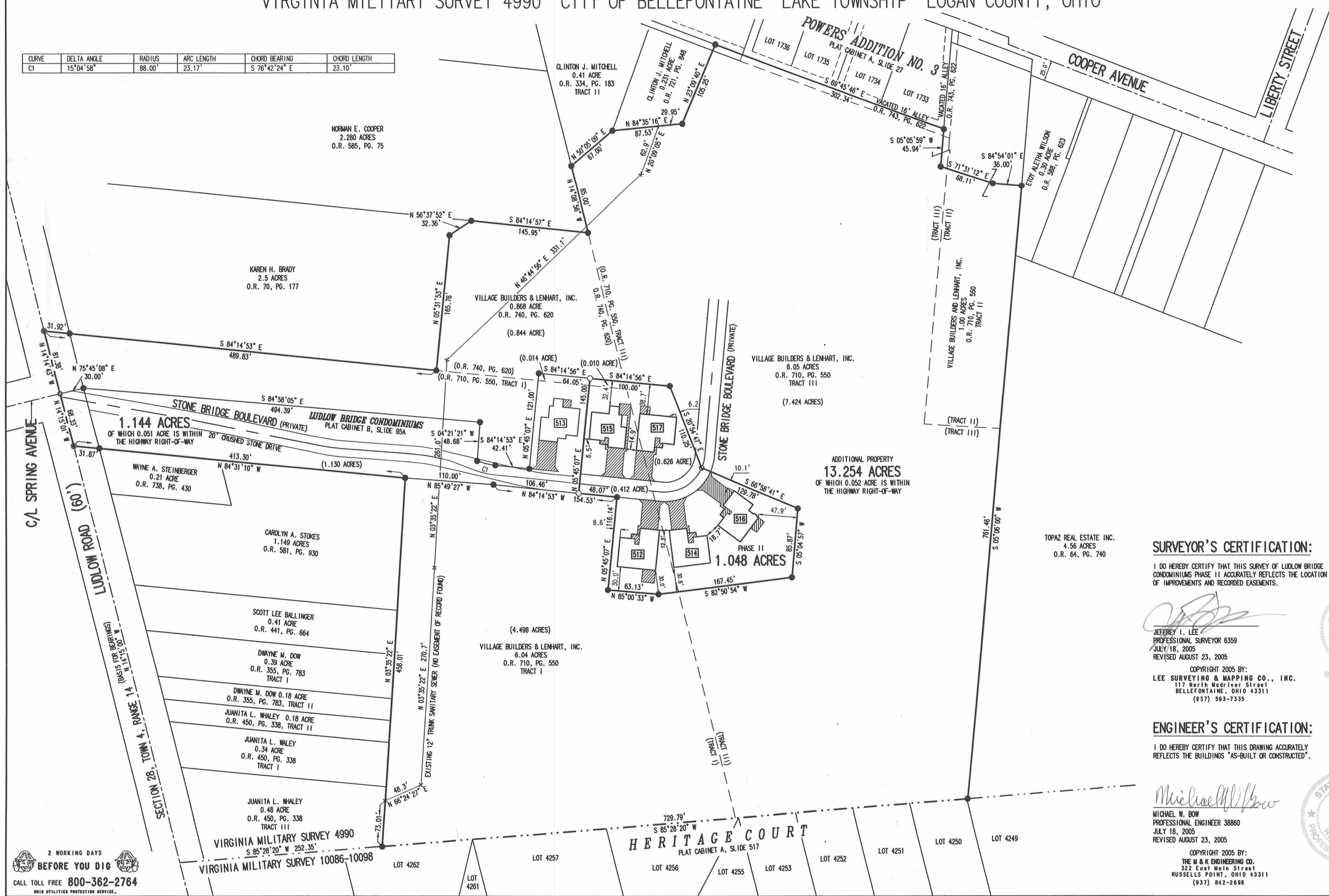
0.868 ACRE TRACT OFFICIAL RECORD 740, PAGE 620

VIRGINIA MILITARY SURVEY 4990 CITY OF BELLEFONTAINE LAKE TOWNSHIP LOGAN COUNTY, OHIO



- LEGEND:
- ⊙ 1-1/4 INCH IRON PIPE FOUND
 - 5/8 INCH IRON ROD SET
 - 5/8 INCH IRON ROD FOUND
 - ⊙ MAG NAIL SET
 - ⊙ RAILROAD SPIKE SET
 - ▨ LIMITED COMMON AREA
 - [] UNIT NUMBER

CURVE	DELTA ANGLE	RADIUS	ARC LENGTH	CHORD BEARING	CHORD LENGTH
C1	15°04'58"	88.00'	23.17'	S 76°42'24" E	23.10'



- NOTES:
1. EASEMENTS IF SHOWN ARE AS PROVIDED BY DEVELOPER. THE SURVEYOR DID NOT SEARCH FOR ADDITIONAL EASEMENTS.
 2. THE WORD "CERTIFY" IS INTENDED TO BE AS DEFINED IN OHIO ADMINISTRATIVE CODE 4733-35-04(C).
 3. BUILDING HEIGHT FROM PEAK OF ROOF TO GROUND:
 UNIT 512 IS 20.6'
 UNIT 514 IS 20.0'
 UNIT 515 IS 20.0'
 UNIT 516 IS 19.8'
 UNIT 517 IS 20.6'

SURVEYOR'S CERTIFICATION:

I DO HEREBY CERTIFY THAT THIS SURVEY OF LUDLOW BRIDGE CONDOMINIUMS PHASE II ACCURATELY REFLECTS THE LOCATION OF IMPROVEMENTS AND RECORDED EASEMENTS.

Jeffrey I. Lee
 JEFFREY I. LEE
 PROFESSIONAL SURVEYOR 6359
 JULY 18, 2005
 REVISED AUGUST 23, 2005



COPYRIGHT 2005 BY:
 LEE SURVEYING & MAPPING CO., INC.
 117 North Medriver Street
 BELLEFONTAINE, OHIO 43311
 (937) 593-7335

ENGINEER'S CERTIFICATION:

I DO HEREBY CERTIFY THAT THIS DRAWING ACCURATELY REFLECTS THE BUILDINGS "AS-BUILT OR CONSTRUCTED".

Michael W. Bow
 MICHAEL W. BOW
 PROFESSIONAL ENGINEER 38860
 JULY 18, 2005
 REVISED AUGUST 23, 2005



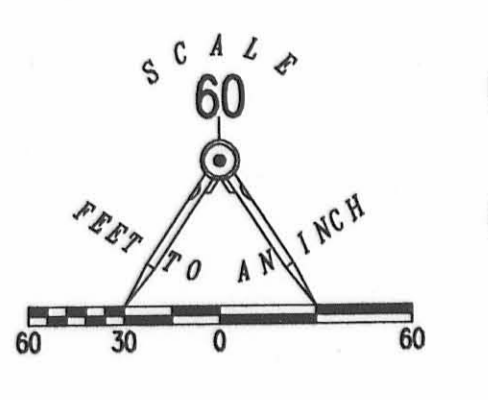
COPYRIGHT 2005 BY:
 THE M & K ENGINEERING CO.
 322 East Main Street
 RUSSELLS POINT, OHIO 43311
 (937) 842-2698

PRE-APPROVAL *Jan C. Ho* 8-24-05
 PLAT CHECKED *Jan C. Ho* 8-24-05
 TRANSFERRED THIS 24th DAY OF August, 2005
 AUDITOR, LOGAN COUNTY, OHIO
 RECORDED IN PLAT CABINET B, SLIDE 99A
 RECEIVED FOR RECORD AT 3:43 O'CLOCK P.M.
 THIS 24th DAY OF August, 2005
 RECORDER, LOGAN COUNTY, OHIO

2 WORKING DAYS
BEFORE YOU DIG
 CALL TOLL FREE 800-362-2764
 OHIO UTILITIES PROTECTION SERVICE.

LUDLOW BRIDGE CONDOMINIUMS - PHASE III

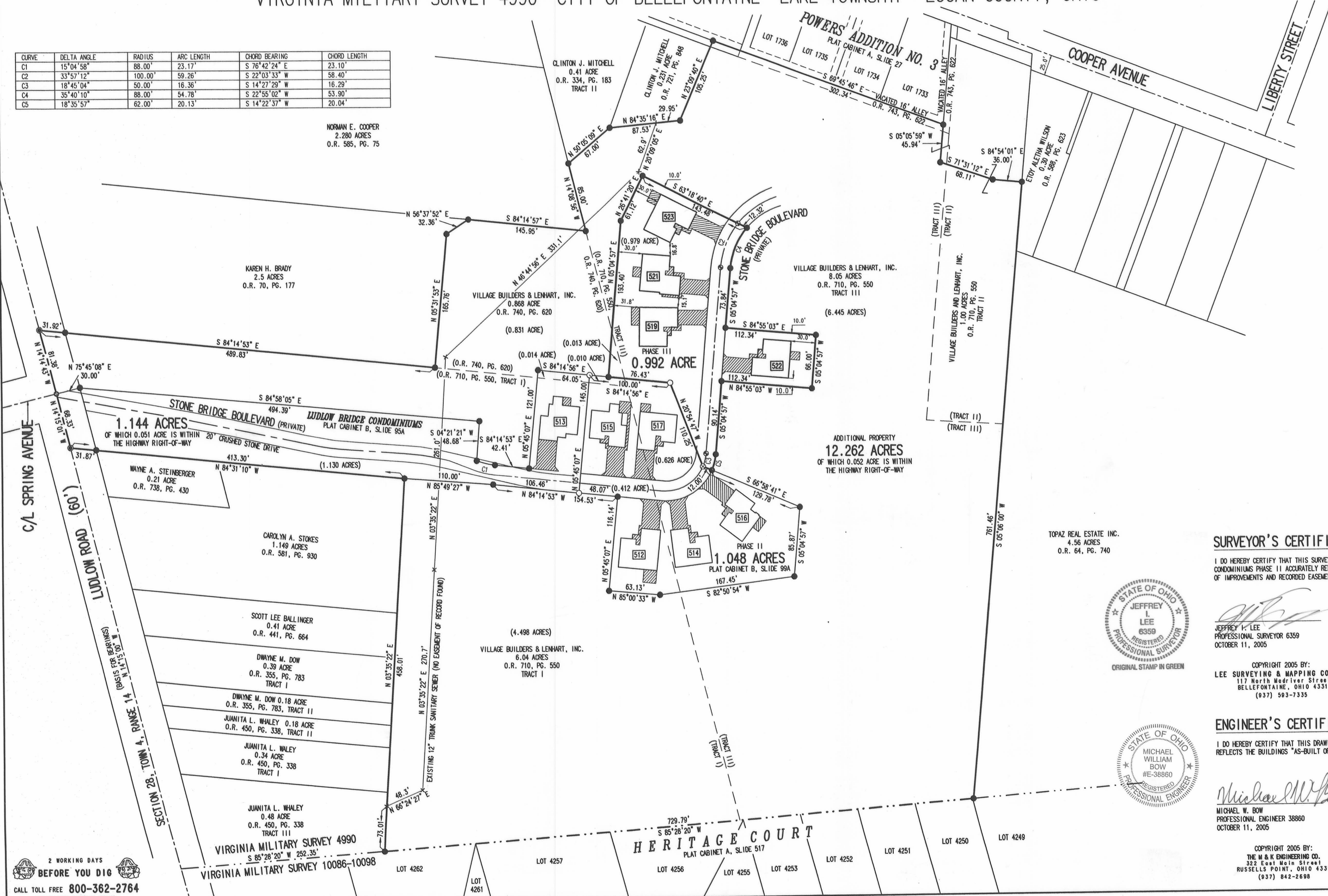
EXHIBIT B TO DECLARATION AND BYLAWS OF
 6.04 ACRE TRACT, 1.00 ACRE TRACT, 8.05 ACRE TRACT OFFICIAL RECORD 550, PAGE 550, TRACTS I, II AND III
 0.868 ACRE TRACT OFFICIAL RECORD 740, PAGE 620
 VIRGINIA MILITARY SURVEY 4990 CITY OF BELLEFONTAINE LAKE TOWNSHIP LOGAN COUNTY, OHIO



CURVE	DELTA ANGLE	RADIUS	ARC LENGTH	CHORD BEARING	CHORD LENGTH
C1	15°04'58"	88.00'	23.17'	S 76°42'24" E	23.10'
C2	33°57'12"	100.00'	59.26'	S 22°03'33" W	58.40'
C3	18°45'04"	50.00'	16.36'	S 14°27'29" W	16.29'
C4	35°40'10"	88.00'	54.78'	S 22°55'02" W	53.90'
C5	18°35'57"	62.00'	20.13'	S 14°22'37" W	20.04'

NORMAN E. COOPER
 2.280 ACRES
 O.R. 585, PG. 75

- LEGEND:
- ⊙ 1-1/4 INCH IRON PIPE FOUND
 - 5/8 INCH IRON ROD SET
 - 5/8 INCH IRON ROD FOUND
 - MAG NAIL SET
 - RAILROAD SPIKE SET
 - RAILROAD SPIKE FOUND
 - ▨ LIMITED COMMON AREA
 - [] UNIT NUMBER



- NOTES:
- EASEMENTS IF SHOWN ARE AS PROVIDED BY DEVELOPER. THE SURVEYOR DID NOT SEARCH FOR ADDITIONAL EASEMENTS.
 - THE WORD "CERTIFY" IS INTENDED TO BE AS DEFINED IN OHIO ADMINISTRATIVE CODE 4733-35-04(C).
 - BUILDING HEIGHT FROM PEAK OF ROOF TO GROUND:
 UNIT 519 IS 23.6'
 UNIT 521 IS 24.0'
 UNIT 522 IS 20.0'
 UNIT 523 IS 19.1'

SURVEYOR'S CERTIFICATION:

I DO HEREBY CERTIFY THAT THIS SURVEY OF LUDLOW BRIDGE CONDOMINIUMS PHASE II ACCURATELY REFLECTS THE LOCATION OF IMPROVEMENTS AND RECORDED EASEMENTS.

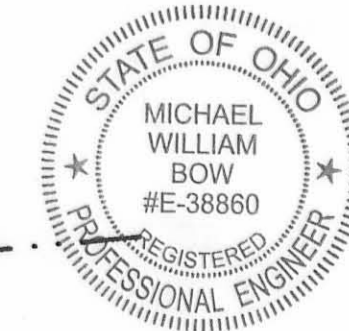


JEFFREY L. LEE
 6359
 PROFESSIONAL SURVEYOR
 OCTOBER 11, 2005

COPYRIGHT 2005 BY:
 LEE SURVEYING & MAPPING CO., INC.
 117 North Madriver Street
 BELLEFONTAINE, OHIO 43311
 (937) 593-7335

ENGINEER'S CERTIFICATION:

I DO HEREBY CERTIFY THAT THIS DRAWING ACCURATELY REFLECTS THE BUILDINGS "AS-BUILT OR CONSTRUCTED".



MICHAEL W. BOW
 38860
 PROFESSIONAL ENGINEER
 OCTOBER 11, 2005

COPYRIGHT 2005 BY:
 THE M & K ENGINEERING CO.
 332 East Main Street
 RUSSELLS POINT, OHIO 43311
 (937) 842-2698

PRE-APPROVAL *Jon C. H.* 10-26-05
 PLAT CHECKED *Jon C. H.* 10-27-05
 TRANSFERRED THIS 27th DAY OF October, 2005
 AUDITOR, LOGAN COUNTY, OHIO
 RECORDED IN PLAT CABINET B, SLIDE 99B
 RECEIVED FOR RECORD AT 11:24 O'CLOCK A.M.
 THIS 27th DAY OF October, 2005
 RECORDER, LOGAN COUNTY, OHIO

2 WORKING DAYS
BEFORE YOU DIG
 CALL TOLL FREE 800-362-2764
 OHIO UTILITIES PROTECTION SERVICE

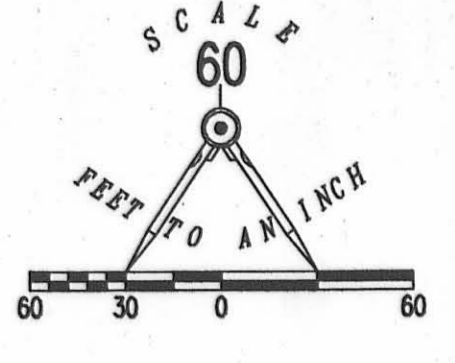
EXHIBIT B TO DECLARATION AND BYLAWS OF

LUDLOW BRIDGE CONDOMINIUMS - PHASE IV

6.04 ACRE TRACT, 1.00 ACRE TRACT, 8.05 ACRE TRACT OFFICIAL RECORD 550, PAGE 550, TRACTS I, II AND III

0.868 ACRE TRACT OFFICIAL RECORD 740, PAGE 620

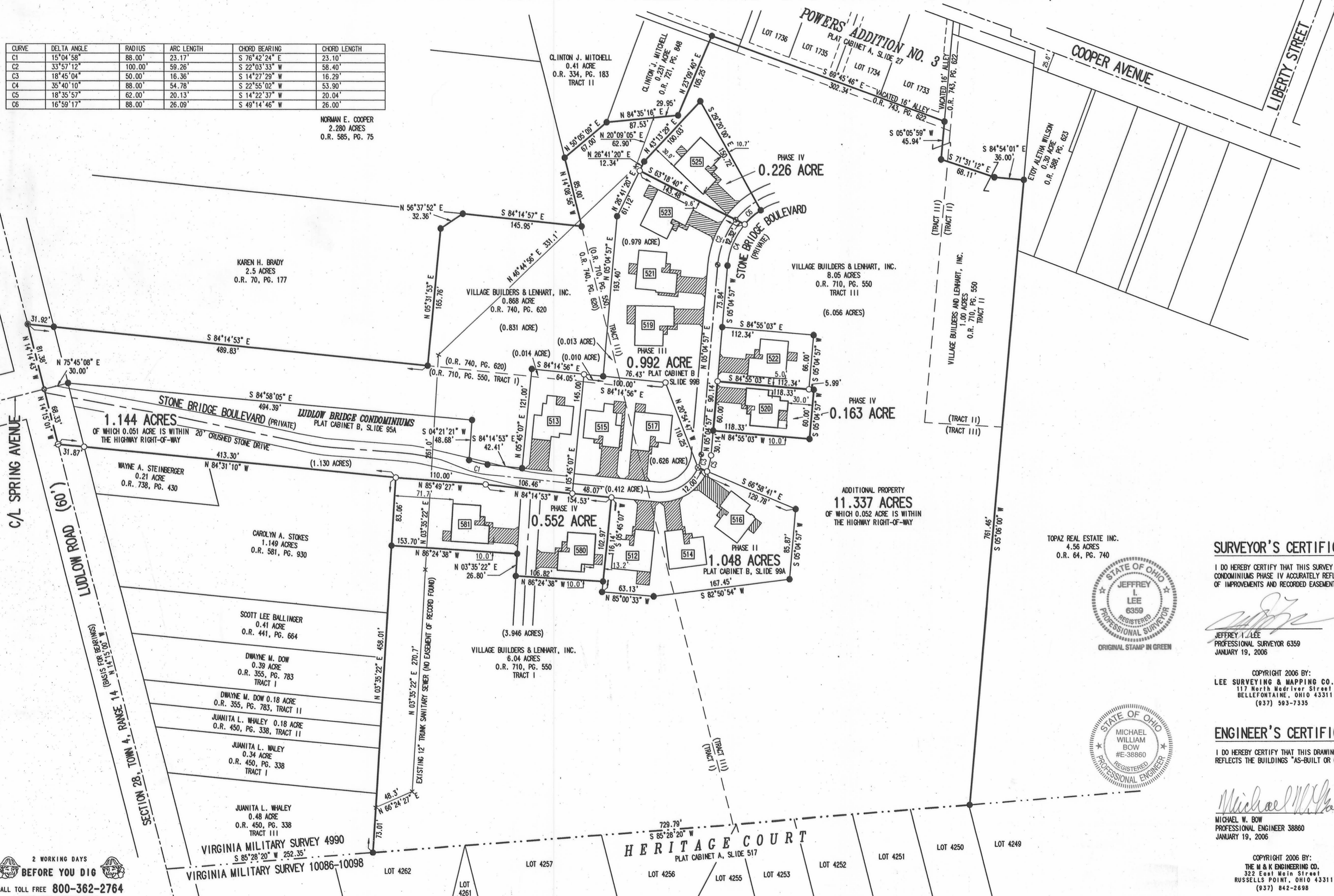
VIRGINIA MILITARY SURVEY 4990 CITY OF BELLEFONTAINE LAKE TOWNSHIP LOGAN COUNTY, OHIO



CURVE	DELTA ANGLE	RADIUS	ARC LENGTH	CHORD BEARING	CHORD LENGTH
C1	15°04'58"	88.00'	23.17'	S 76°42'24" E	23.10'
C2	33°57'12"	100.00'	59.26'	S 22°03'33" W	58.40'
C3	18°45'04"	50.00'	16.36'	S 14°27'29" W	16.29'
C4	35°40'10"	88.00'	54.78'	S 22°55'02" W	53.90'
C5	18°35'57"	62.00'	20.13'	S 14°22'37" W	20.04'
C6	16°59'17"	88.00'	26.09'	S 49°14'46" W	26.00'

NORMAN E. COOPER
2.280 ACRES
O.R. 585, PG. 75

- LEGEND:
- 1-1/4 INCH IRON PIPE FOUND
 - 5/8 INCH IRON ROD SET
 - 5/8 INCH IRON ROD FOUND
 - MAG NAIL SET
 - MAG NAIL FOUND
 - RAILROAD SPIKE SET
 - RAILROAD SPIKE FOUND
 - ▨ LIMITED COMMON AREA
 - ||| UNIT NUMBER



- NOTES:
- EASEMENTS IF SHOWN ARE AS PROVIDED BY DEVELOPER. THE SURVEYOR DID NOT SEARCH FOR ADDITIONAL EASEMENTS.
 - THE WORD "CERTIFY" IS INTENDED TO BE AS DEFINED IN OHIO ADMINISTRATIVE CODE 4733-35-04(C).
 - BUILDING HEIGHT FROM PEAK OF ROOF TO GROUND:
 - UNIT 520 IS 19.4'
 - UNIT 525 IS 23.4'
 - UNIT 580 IS 20.4'
 - UNIT 581 IS 21.7'

SURVEYOR'S CERTIFICATION:

I DO HEREBY CERTIFY THAT THIS SURVEY OF LUDLOW BRIDGE CONDOMINIUMS PHASE IV ACCURATELY REFLECTS THE LOCATION OF IMPROVEMENTS AND RECORDED EASEMENTS.

Jeffrey I. Lee
JEFFREY I. LEE
PROFESSIONAL SURVEYOR 6359
JANUARY 19, 2006



ENGINEER'S CERTIFICATION:

I DO HEREBY CERTIFY THAT THIS DRAWING ACCURATELY REFLECTS THE BUILDINGS "AS-BUILT OR CONSTRUCTED".

Michael W. Bow
MICHAEL W. BOW
PROFESSIONAL ENGINEER 38860
JANUARY 19, 2006



COPYRIGHT 2006 BY:
THE M & K ENGINEERING CO.
322 East Main Street
RUSSELLS POINT, OHIO 43311
(937) 842-2698

PRE-APPROVAL *Jan C. Ho* 1-30-06
 PLAT CHECKED *Jan C. Ho* 1-30-06
 TRANSFERRED THIS 30th DAY OF *Jan*, 2006
 AUDITOR, LOGAN COUNTY, OHIO
 RECORDED IN PLAT CABINET *B*, SLIDE *101 B*
 RECEIVED FOR RECORD AT 11:45 O'CLOCK A.M.
 THIS 30th DAY OF *January*, 2006
 RECORDER, LOGAN COUNTY, OHIO *Simla Hanson*

2 WORKING DAYS
BEFORE YOU DIG
CALL TOLL FREE 800-362-2764
OHIO UTILITIES PROTECTION SERVICE.