

10-17-13

APPROVED

Lee Surveying and Mapping Co., Inc.

Land Surveys • Topography • Subdivisions • Construction Layout

117 N. Madriver St.
Bellefontaine OH 43311



Phone: (937) 593-7335
Fax: (937) 593-7444
surveys@lsminc.us

EXHIBIT A LUDLOW BRIDGE CONDOMINIUMS – PHASE XXIV 2.097 ACRES

Lying in Virginia Military Survey 4990, City of Bellefontaine, Lake Township, Logan County, Ohio.

Being out of the Village Builders & Lenhart, Inc., 6.04 acre tract and 8.05 acre tract as deeded and described in Official Record 710, Page 550, Tract I and Tract III and all of the remainder of the 0.868 acre tract as deeded and described in Official Record 740, Page 620 and being more particularly described as follows:

Beginning on a 1-1/4 inch iron pipe found on the west line of Virginia Military Survey 4990 on the intersection of the center-lines of Spring Avenue and Ludlow Road.

THENCE, with the west line of Virginia Military Survey 4990 and the center-line of Ludlow Road (60 feet wide), N 14°-14'-43"W, a distance of 81.38 feet to a MAG nail set.

THENCE, with the lines of the Karen H. Brady 2.5 acre tract (O.R. 70, Page 177), the following three courses:

S 84°-14'-53"E, a distance of 489.83 feet to a 5/8 inch iron rod set, passing a 5/8 inch iron rod set at 31.92 feet.

N 05°-31'-53"E, a distance of 165.76 feet to a 5/8 inch iron rod set.

N 56°-37'-52"E, a distance of 32.36 feet to a 5/8 inch iron rod set.

THENCE, with the lines of the Norman E. Cooper 2.280 acre tract (O.R. 585, Pg. 75), the following two courses:

S 84°-14'-57"E, a distance of 145.95 feet to a 5/8 inch iron rod set.

N 14°-08'-56"W, a distance of 85.00 feet to a 5/8 inch iron rod set.

THENCE, with a south line of the Clinton J. Mitchell 0.41 acre tract (O.R. 334, Pg. 183, Tract II), N 50°-05'-09"E, a distance of 67.00 feet to a 5/8 inch iron rod set.

INDEXED ON MAP
9491 5D-1

Lee Surveying and Mapping Co., Inc.

Land Surveys • Topography • Subdivisions • Construction Layout

117 N. Madriver St.
Bellefontaine OH 43311



Phone: (937) 593-7335
Fax: (937) 593-7444
surveys@lsminc.us

THENCE, with the lines of the Clinton J. Mitchell 0.231 acre tract (O.R. 721, Pg. 848, the following two courses:

N 84°-35'-16"E, a distance of 87.53 feet to a 5/8 inch iron rod set.

N 23°-09'-40"E, a distance of 105.25 feet to a 5/8 inch iron rod set on the center-line of a 16.00 feet wide vacated alley (O.R. 743, Pg. 622).

THENCE, with the center-line of the 16.00 feet wide vacated alley, S 69°-45'-46"E, a distance of 189.23 feet to a 5/8 inch iron rod found.

THENCE, with the north line of the 0.180 acre portion of Ludlow Bridge Condominiums – Phase XIX (Plat Cabinet B, Slide 127B), N 89°-51'-46"W, a distance of 98.97 feet to a 5/8 inch iron rod found.

THENCE, with the north line of the 0.184 acre portion of Ludlow Bridge Condominiums – Phase VI (Plat Cabinet B, Slide 105A), S 81°-08'-37"W, a distance of 93.92 feet to a 5/8 inch iron rod found.

THENCE, with the northwesterly lines of the 0.226 acre portion of Ludlow Bridge Condominiums – Phase IV (Plat Cabinet B, Slide 101B), the following two courses:

S 43°-13'-29"W, a distance of 100.03 feet to a 5/8 inch iron rod set.

S 26°-41'-20"W, a distance of 12.34 feet to a 5/8 inch iron rod found.

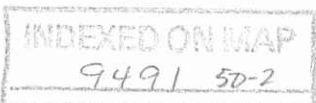
THENCE, with the westerly lines of the 0.992 acre portion of Ludlow Bridge Condominiums – Phase III (Plat Cabinet B, Slide 99B), the following two courses:

S 26°-41'-20"W, a distance of 61.12 feet to a 5/8 inch iron rod set.

S 05°-04'-57"W, a distance of 193.40 feet to a 5/8 inch iron rod set.

THENCE, with the north line of the 1.048 acre portion of Ludlow Bridge Condominiums – Phase II (Plat Cabinet B, Slide 99A), N 84°-14'-56"W, a distance of 23.57 feet to a 5/8 inch iron rod found.

THENCE, with the lines of the 1.144 acre portion of Ludlow Bridge Condominiums – Phase I (Plat Cabinet B, Slide 98A), the following two courses:



Lee Surveying and Mapping Co., Inc.

Land Surveys • Topography • Subdivisions • Construction Layout

117 N. Madriver St.
Bellefontaine OH 43311



Phone: (937) 593-7335
Fax: (937) 593-7444
surveys@lsmcinc.us

N 84°-14'-56"W, a distance of 64.05 feet to a 5/8 inch iron rod set.

S 05°-45'-07"W, a distance of 12.00 feet to a 5/8 inch iron rod set.

THENCE, with the lines of the 0.166 acre portion of Ludlow Bridge Condominiums – Phase IX (Plat Cabinet B, Slide 107A), the following two courses:

N 84°-14'-53"W, a distance of 67.90 feet to a 5/8 inch iron rod set.

S 04°-21'-21"W, a distance of 57.32 feet to a 5/8 inch iron rod found.

THENCE, with the lines of the aforesaid 1.144 acre portion of Ludlow Bridge Condominiums – Phase I, the following two courses:

N 84°-58'-05"W, a distance of 494.39 feet to a 5/8 inch iron rod found.

S 75°-45'-08"W, a distance of 30.00 feet to the point of beginning.

Containing 2.097 acres, of which 0.052 acre is within the highway right-of-way.

Property is subject to any and all previous easements and rights-of-way of record.

The basis for bearings is the west line of Virginia Military Survey 4990, being N 14°-15'-00"W, and all other bearings are from angles and distances measured in a field survey by Lee Surveying and Mapping Co., Inc. on August 5, 2013.



Description prepared by:

A handwritten signature in black ink that reads 'William K. Bruce'.

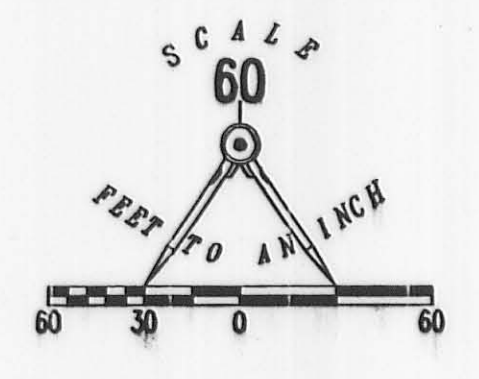
William K. Bruce
Professional Surveyor 7437
September 24, 2013

715LBC-CONDO24

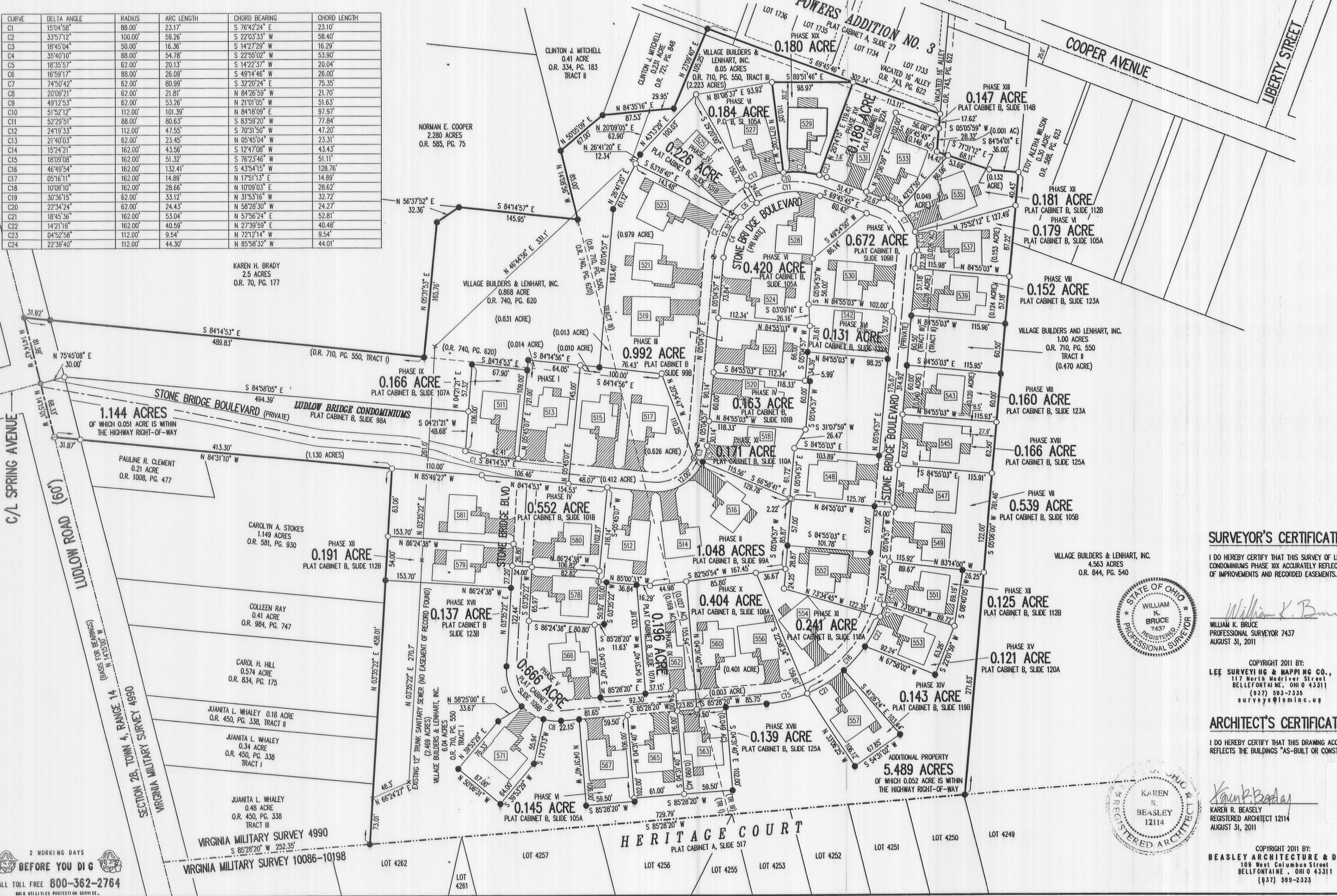


LUDLOW BRIDGE CONDOMINIUMS - PHASE XIX

EXHIBIT B TO DECLARATION AND BYLAWS OF
 6.04 ACRE TRACT, 1.00 ACRE TRACT, 8.05 ACRE TRACT OFFICIAL RECORD 710, PAGE 550, TRACTS I, II AND III
 0.868 ACRE TRACT OFFICIAL RECORD 740, PAGE 620
 VIRGINIA MILITARY SURVEY 4990 CITY OF BELLEFONTAINE LAKE TOWNSHIP LOGAN COUNTY, OHIO



CURVE	DELTA ANGLE	RADIUS	ARC LENGTH	CHORD BEARING	CHORD LENGTH
C1	15°04'58"	88.00'	23.17'	S 76°42'24" E	23.10'
C2	33°57'12"	100.00'	58.26'	S 22°03'33" W	58.40'
C3	18°45'04"	50.00'	16.36'	S 14°27'29" W	16.29'
C4	35°40'10"	88.00'	54.78'	S 22°55'02" W	53.90'
C5	18°35'57"	62.00'	20.13'	S 14°22'37" W	20.04'
C6	16°59'17"	88.00'	26.09'	S 49°14'46" W	26.00'
C7	74°50'42"	62.00'	80.99'	S 32°20'24" E	75.35'
C8	20°09'21"	62.00'	21.81'	N 84°26'59" W	21.70'
C9	49°12'53"	62.00'	53.26'	N 21°01'05" W	51.63'
C10	51°52'12"	112.00'	101.39'	N 84°18'09" E	97.97'
C11	52°29'51"	88.00'	80.63'	S 83°59'20" W	77.84'
C12	24°19'33"	112.00'	47.55'	S 70°31'50" W	47.20'
C13	21°40'03"	62.00'	23.45'	N 05°45'04" W	23.31'
C14	15°24'21"	162.00'	43.56'	S 12°47'08" W	43.43'
C15	18°09'08"	162.00'	51.32'	S 76°23'46" W	51.11'
C16	46°49'54"	162.00'	132.41'	S 43°54'15" W	128.76'
C17	05°16'11"	162.00'	14.89'	N 17°51'13" E	14.89'
C18	10°06'10"	162.00'	28.66'	N 10°09'03" E	28.62'
C19	30°36'15"	62.00'	33.12'	N 31°53'16" W	32.72'
C20	22°34'24"	62.00'	24.43'	N 58°28'30" W	24.27'
C21	18°45'36"	162.00'	53.04'	N 57°56'24" E	52.81'
C22	14°21'18"	162.00'	40.59'	N 27°39'59" E	40.48'
C23	04°52'58"	112.00'	9.54'	N 72°12'14" W	9.54'
C24	22°39'40"	112.00'	44.30'	N 85°58'32" W	44.01'



- LEGEND:
- 1-1/4 INCH IRON PIPE FOUND
 - 5/8 INCH IRON ROD SET
 - 5/8 INCH IRON ROD FOUND
 - MAG NAIL SET
 - MAG NAIL FOUND
 - RAILROAD SPIKE SET
 - RAILROAD SPIKE FOUND
 - ▨ LIMITED COMMON AREA
 - [] UNIT NUMBER

- NOTES:
1. EASEMENTS IF SHOWN ARE AS PROVIDED BY DEVELOPER. THE SURVEYOR DID NOT SEARCH FOR ADDITIONAL EASEMENTS.
 2. THE WORD "CERTIFY" IS INTENDED TO BE AS DEFINED IN OHIO ADMINISTRATIVE CODE 4733-35-04(C).
 3. BUILDING HEIGHT FROM PEAK OF ROOF TO GROUND: UNIT 529 IS 20.50'

SURVEYOR'S CERTIFICATION:

I DO HEREBY CERTIFY THAT THIS SURVEY OF LUDLOW BRIDGE CONDOMINIUMS PHASE XIX ACCURATELY REFLECTS THE LOCATION OF IMPROVEMENTS AND RECORDED EASEMENTS.

William K. Bruce
 WILLIAM K. BRUCE
 PROFESSIONAL SURVEYOR 7437
 AUGUST 31, 2011

COPYRIGHT 2011 BY:
 LEE SURVEYING & MAPPING CO., INC.
 117 North Medriver Street
 BELLEFONTAINE, OHIO 43311
 (937) 593-7335
 surveys@lsminc.us

ARCHITECT'S CERTIFICATION:

I DO HEREBY CERTIFY THAT THIS DRAWING ACCURATELY REFLECTS THE BUILDINGS "AS-BUILT OR CONSTRUCTED".

Karen R. Beasley
 KAREN R. BEASLEY
 REGISTERED ARCHITECT 12114
 AUGUST 31, 2011

COPYRIGHT 2011 BY:
 BEASLEY ARCHITECTURE & DESIGN
 109 West Columbus Street
 BELLEFONTAINE, OHIO 43311
 (937) 599-2323

PRE-APPROVAL *Suzanne M. Upton 9-9-11*

PLAT CHECKED *Suzanne M. Upton 9-12-11*

TRANSFERRED THIS 12TH DAY OF SEPTEMBER, 2011

AUDITOR, LOGAN COUNTY, OHIO *Paula Price*

RECORDED IN PLAT CABINET B, SLIDE 127B

RECEIVED FOR RECORD AT 3:12 O'CLOCK P.M.

THIS 12TH DAY OF September, 2011

RECORDER, LOGAN COUNTY, OHIO *Linda Hanson*

2 WORKING DAYS
BEFORE YOU DIG
 CALL TOLL FREE 800-362-2764
 OHIO UTILITIES PROTECTION SERVICE.

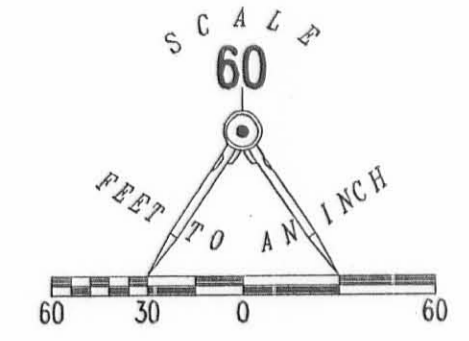
EXHIBIT B TO DECLARATION AND BYLAWS OF

LUDLOW BRIDGE CONDOMINIUMS - PHASE XX

6.04 ACRE TRACT, 1.00 ACRE TRACT, 8.05 ACRE TRACT OFFICIAL RECORD 710, PAGE 550, TRACTS I, II AND III

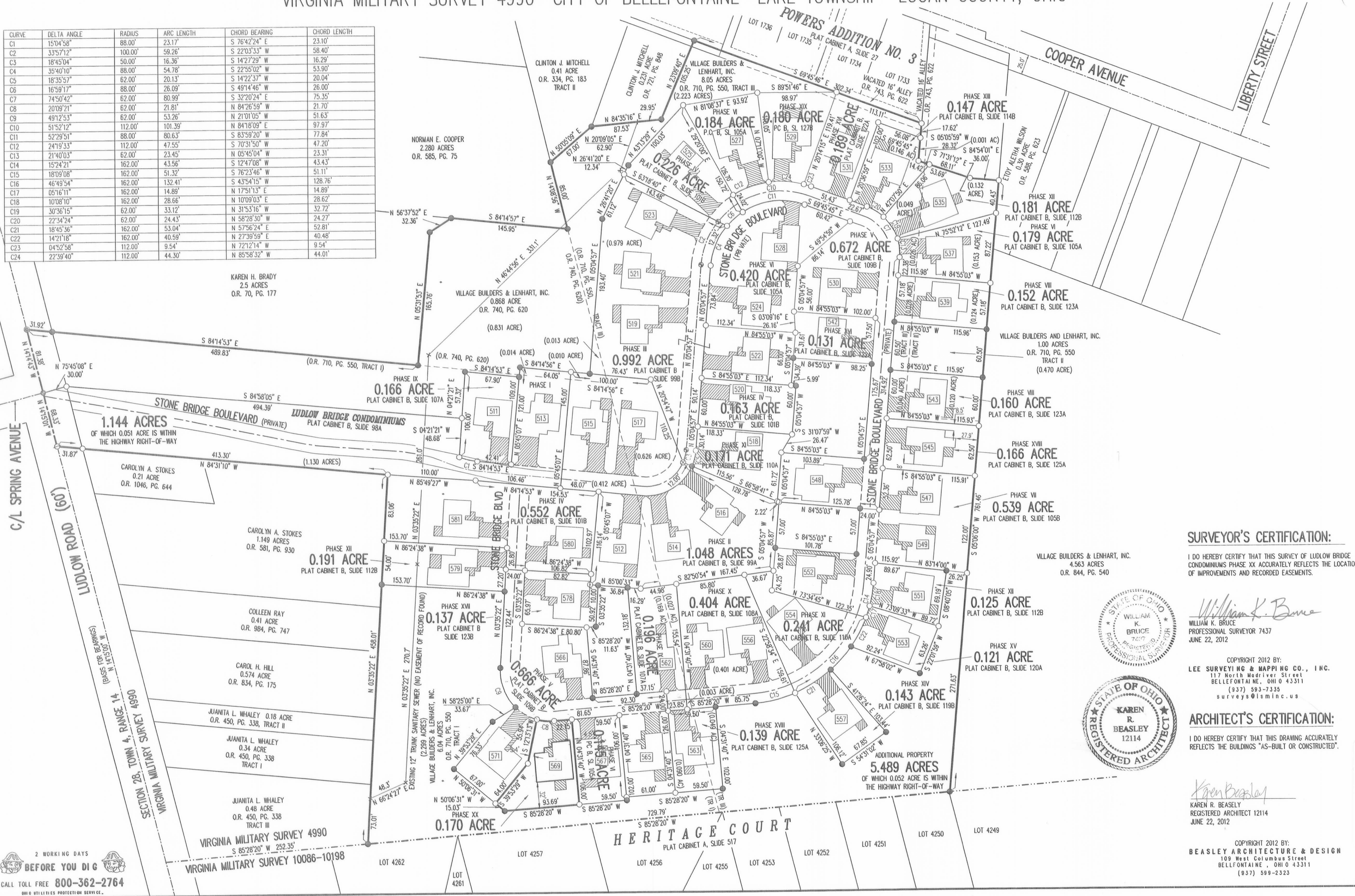
0.868 ACRE TRACT OFFICIAL RECORD 740, PAGE 620

VIRGINIA MILITARY SURVEY 4990 CITY OF BELLEFONTAINE LAKE TOWNSHIP LOGAN COUNTY, OHIO



- LEGEND:
- ⊙ 1-1/4 INCH IRON PIPE FOUND
 - 5/8 INCH IRON ROD SET
 - 5/8 INCH IRON ROD FOUND
 - ⊙ MAG NAIL SET
 - ⊙ MAG NAIL FOUND
 - ⊙ RAILROAD SPIKE SET
 - ⊙ RAILROAD SPIKE FOUND
 - ▨ LIMITED COMMON AREA
 - ▭ UNIT NUMBER

CURVE	DELTA ANGLE	RADIUS	ARC LENGTH	CHORD BEARING	CHORD LENGTH
C1	150°45'58"	88.00'	23.17'	S 76°42'24" E	23.10'
C2	33°57'12"	100.00'	59.26'	S 22°03'33" W	58.40'
C3	18°45'04"	50.00'	16.36'	S 14°27'29" W	16.29'
C4	35°40'10"	88.00'	54.78'	S 22°55'02" W	53.90'
C5	18°35'57"	62.00'	20.13'	S 14°22'37" W	20.04'
C6	16°59'17"	88.00'	26.09'	S 49°14'46" W	26.00'
C7	74°50'42"	62.00'	80.99'	S 32°20'24" E	75.35'
C8	20°09'21"	62.00'	21.81'	N 84°26'59" W	21.70'
C9	49°12'53"	62.00'	53.26'	N 21°01'05" E	51.63'
C10	51°52'12"	112.00'	101.39'	N 84°18'09" E	97.97'
C11	52°29'51"	88.00'	80.83'	S 83°59'20" W	77.84'
C12	24°19'33"	112.00'	47.55'	S 70°31'50" W	47.20'
C13	21°40'03"	62.00'	23.45'	N 05°45'04" W	23.31'
C14	15°24'21"	162.00'	43.56'	S 12°47'08" W	43.43'
C15	18°09'08"	162.00'	51.32'	S 76°23'46" W	51.11'
C16	46°49'54"	162.00'	132.41'	S 43°54'15" W	128.76'
C17	05°16'11"	162.00'	14.89'	N 17°51'13" E	14.89'
C18	10°08'10"	162.00'	28.66'	N 10°09'03" E	28.62'
C19	30°36'15"	62.00'	33.12'	N 31°53'16" W	32.72'
C20	22°34'24"	62.00'	24.43'	N 58°28'30" W	24.27'
C21	18°45'36"	162.00'	53.04'	N 57°56'24" E	52.81'
C22	14°21'18"	162.00'	40.59'	N 27°39'59" E	40.48'
C23	04°52'58"	112.00'	9.54'	N 72°12'14" W	9.54'
C24	22°39'40"	112.00'	44.30'	N 85°58'32" W	44.01'

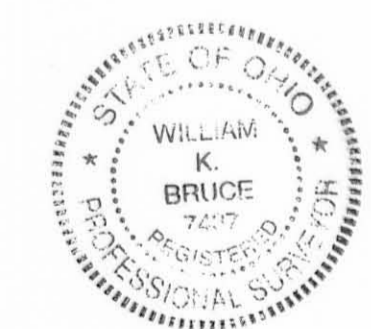


- NOTES:
- EASEMENTS IF SHOWN ARE AS PROVIDED BY DEVELOPER. THE SURVEYOR DID NOT SEARCH FOR ADDITIONAL EASEMENTS.
 - THE WORD "CERTIFY" IS INTENDED TO BE AS DEFINED IN OHIO ADMINISTRATIVE CODE 4733-35-04(C).
 - BUILDING HEIGHT FROM PEAK OF ROOF TO GROUND: UNIT 569 IS 20.69'

SURVEYOR'S CERTIFICATION:

I DO HEREBY CERTIFY THAT THIS SURVEY OF LUDLOW BRIDGE CONDOMINIUMS PHASE XX ACCURATELY REFLECTS THE LOCATION OF IMPROVEMENTS AND RECORDED EASEMENTS.

William K. Bruce
 WILLIAM K. BRUCE
 PROFESSIONAL SURVEYOR 7437
 JUNE 22, 2012



COPYRIGHT 2012 BY:
 LEE SURVEYING & MAPPING CO., INC.
 117 North Modivier Street
 BELLEFONTAINE, OHIO 43311
 (937) 593-7335
 surveys@lsmcinc.us

ARCHITECT'S CERTIFICATION:

I DO HEREBY CERTIFY THAT THIS DRAWING ACCURATELY REFLECTS THE BUILDINGS "AS-BUILT OR CONSTRUCTED".

Karen R. Beasley
 KAREN R. BEASLEY
 REGISTERED ARCHITECT 12114
 JUNE 22, 2012



COPYRIGHT 2012 BY:
 BEASLEY ARCHITECTURE & DESIGN
 108 West Columbus Street
 BELLEFONTAINE, OHIO 43311
 (937) 599-2323

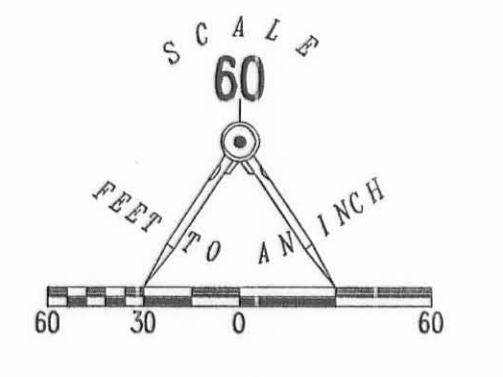
PRE-APPROVAL *Suzanne M. Neely 7-5-12*
 PLAT CHECKED *Suzanne M. Neely 7-5-12*
 TRANSFERRED THIS 6th DAY OF July, 2012
 AUDITOR, LOGAN COUNTY, OHIO
 RECORDED IN PLAT CABINET B, SLIDE 128A
 RECEIVED FOR RECORD AT 11:17:34 O'CLOCK A.M.
 THIS 10th DAY OF July, 2012
 RECORDER, LOGAN COUNTY, OHIO



2 WORKING DAYS
BEFORE YOU DIG
 CALL TOLL FREE 800-362-2764
 OHIO UTILITIES PROTECTION SERVICE

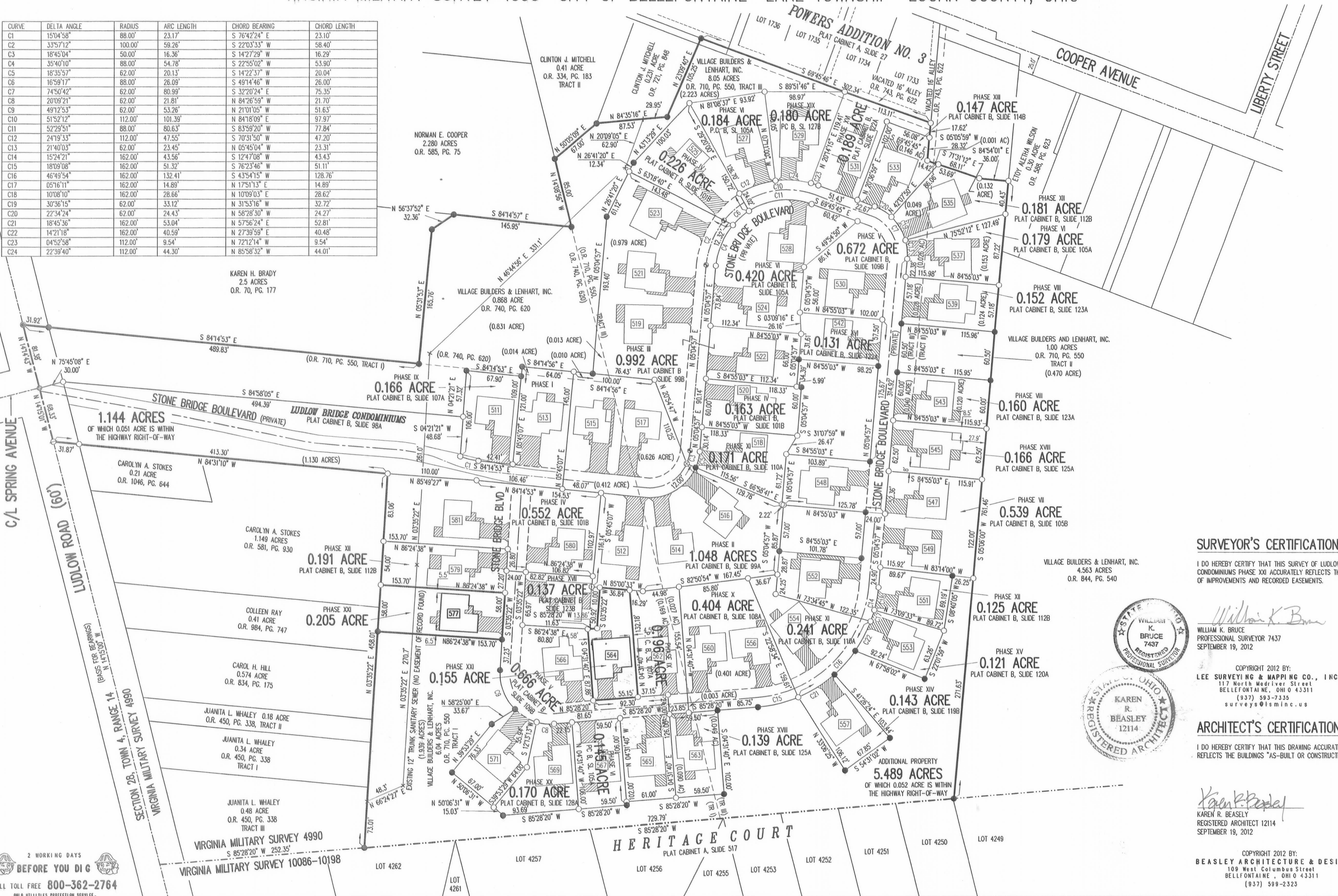
EXHIBIT B TO DECLARATION AND BYLAWS OF LUDLOW BRIDGE CONDOMINIUMS - PHASE XXI

6.04 ACRE TRACT, 1.00 ACRE TRACT, 8.05 ACRE TRACT OFFICIAL RECORD 710, PAGE 550, TRACTS I, II AND III
0.868 ACRE TRACT OFFICIAL RECORD 740, PAGE 620
VIRGINIA MILITARY SURVEY 4990 CITY OF BELLEFONTAINE LAKE TOWNSHIP LOGAN COUNTY, OHIO



CURVE	DELTA ANGLE	RADIUS	ARC LENGTH	CHORD BEARING	CHORD LENGTH
C1	15°04'58"	88.00'	23.17'	S 76°42'24" E	23.10'
C2	33°57'12"	100.00'	59.26'	S 22°03'33" W	58.40'
C3	18°45'04"	50.00'	16.36'	S 14°27'29" W	16.29'
C4	35°40'10"	88.00'	54.78'	S 22°55'02" W	53.90'
C5	18°35'57"	62.00'	20.13'	S 14°22'37" W	20.04'
C6	16°59'17"	88.00'	26.09'	S 49°14'46" W	26.00'
C7	74°50'42"	62.00'	80.99'	S 32°20'24" E	75.35'
C8	20°09'21"	62.00'	21.81'	N 84°26'59" W	21.70'
C9	49°12'53"	62.00'	53.26'	N 21°01'05" W	51.63'
C10	51°52'12"	112.00'	101.39'	N 84°18'09" E	97.97'
C11	52°29'51"	88.00'	80.63'	S 83°59'20" W	77.84'
C12	24°19'33"	112.00'	47.55'	S 70°31'50" W	47.20'
C13	21°40'03"	62.00'	23.45'	N 05°45'04" W	23.31'
C14	15°24'21"	162.00'	43.56'	S 12°47'08" W	43.43'
C15	18°09'08"	162.00'	51.32'	S 76°23'46" W	51.11'
C16	46°49'54"	162.00'	132.41'	S 43°54'15" W	128.76'
C17	05°16'11"	162.00'	14.89'	N 17°51'13" E	14.89'
C18	10°08'10"	162.00'	28.66'	N 10°09'03" E	28.62'
C19	30°36'15"	62.00'	33.12'	N 31°53'16" W	32.72'
C20	22°34'24"	62.00'	24.43'	N 58°28'30" W	24.27'
C21	18°45'36"	162.00'	53.04'	N 57°58'24" E	52.81'
C22	14°21'18"	162.00'	40.59'	N 27°39'59" E	40.48'
C23	04°52'58"	112.00'	9.54'	N 72°12'14" W	9.54'
C24	22°39'40"	112.00'	44.30'	N 85°58'32" W	44.01'

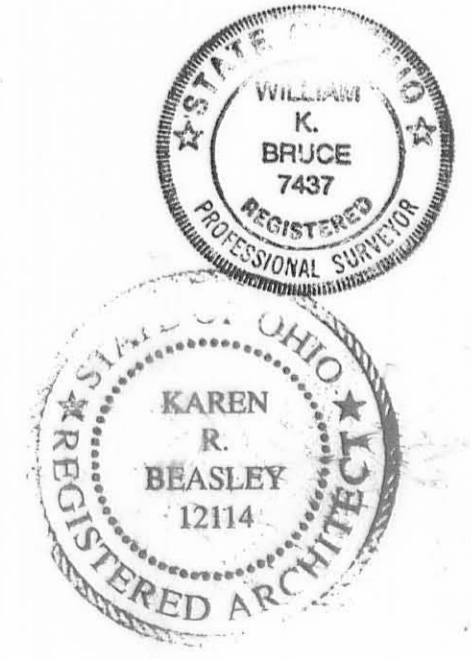
- LEGEND:
- ⊙ 1-1/4 INCH IRON PIPE FOUND
 - 5/8 INCH IRON ROD SET
 - 5/8 INCH IRON ROD FOUND
 - ⊙ MAG NAIL SET
 - ⊙ MAG NAIL FOUND
 - ⊙ RAILROAD SPIKE SET
 - ⊙ RAILROAD SPIKE FOUND
 - ▨ LIMITED COMMON AREA
 - 1111 UNIT NUMBER



- NOTES:
- EASEMENTS IF SHOWN ARE AS PROVIDED BY DEVELOPER. THE SURVEYOR DID NOT SEARCH FOR ADDITIONAL EASEMENTS.
 - THE WORD "CERTIFY" IS INTENDED TO BE AS DEFINED IN OHIO ADMINISTRATIVE CODE 4733-35-04(C).
 - BUILDING HEIGHT FROM PEAK OF ROOF TO GROUND:
UNIT 564 IS 20.40'
UNIT 577 IS 21.70'

SURVEYOR'S CERTIFICATION:

I DO HEREBY CERTIFY THAT THIS SURVEY OF LUDLOW BRIDGE CONDOMINIUMS PHASE XXI ACCURATELY REFLECTS THE LOCATION OF IMPROVEMENTS AND RECORDED EASEMENTS.



STATE OF OHIO
Linda Hanson
Plat 201208268 PLAT B/129A
PHASES
10/18/2012 02:51:29 PM
RECORDING FEES: \$88.45
LEE SURVEYING & MAPPING CO INC

WILLIAM K. BRUCE
PROFESSIONAL SURVEYOR 7437
SEPTEMBER 19, 2012

COPYRIGHT 2012 BY:
LEE SURVEYING & MAPPING CO., INC.
117 North Medifer Street
BELLEFONTAINE, OHIO 43311
(937) 593-7335
surveys@lsmcinc.us

ARCHITECT'S CERTIFICATION:

I DO HEREBY CERTIFY THAT THIS DRAWING ACCURATELY REFLECTS THE BUILDINGS "AS-BUILT OR CONSTRUCTED".

KAREN R. BEASLEY
REGISTERED ARCHITECT 12114
SEPTEMBER 19, 2012

COPYRIGHT 2012 BY:
BEASLEY ARCHITECTURE & DESIGN
109 West Columbus Street
BELLEFONTAINE, OHIO 43311
(937) 599-2323

PRE-APPROVAL Signe M. Young 10-8-12
PLAT CHECKED Signe M. Young 10-8-12
TRANSFERRED THIS 8th DAY OF October, 2012
AUDITOR, LOGAN COUNTY, OHIO
RECORDED IN PLAT CABINET B, SLIDE 129A
RECEIVED FOR RECORD AT 2:51 O'CLOCK P.M.
THIS 8th DAY OF October, 2012
Linda Hanson
RECORDER, LOGAN COUNTY, OHIO

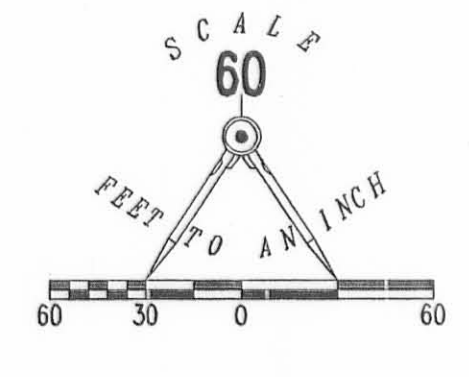
2 WORKING DAYS
BEFORE YOU DIG
CALL TOLL FREE 800-362-2764
OHIO UTILITIES PROTECTION SERVICE

LUDLOW BRIDGE CONDOMINIUMS - PHASE XXII

6.04 ACRE TRACT, 1.00 ACRE TRACT, 8.05 ACRE TRACT OFFICIAL RECORD 710, PAGE 550, TRACTS I, II AND III

0.868 ACRE TRACT OFFICIAL RECORD 740, PAGE 620

VIRGINIA MILITARY SURVEY 4990 CITY OF BELLEFONTAINE LAKE TOWNSHIP LOGAN COUNTY, OHIO



CURVE	DELTA ANGLE	RADIUS	ARC LENGTH	CHORD BEARING	CHORD LENGTH
C1	15°04'58"	88.00'	23.17'	S 76°42'24" E	23.10'
C2	33°57'12"	100.00'	59.26'	S 22°03'33" W	58.40'
C3	18°45'04"	50.00'	16.36'	S 14°27'29" W	16.29'
C4	35°40'10"	88.00'	54.78'	S 22°55'02" W	53.90'
C5	18°35'57"	62.00'	20.13'	S 14°22'37" W	20.04'
C6	16°59'17"	88.00'	26.09'	S 49°14'46" W	26.00'
C7	74°50'42"	62.00'	80.99'	S 32°20'24" E	75.35'
C8	20°09'21"	62.00'	21.81'	N 84°26'59" E	21.70'
C9	49°12'53"	62.00'	53.26'	N 21°01'05" E	51.63'
C10	51°52'12"	112.00'	101.39'	N 84°18'09" E	97.97'
C11	52°29'51"	88.00'	80.63'	S 83°59'20" W	77.84'
C12	24°19'03"	112.00'	47.55'	S 70°31'50" W	47.20'
C13	21°40'03"	62.00'	23.45'	N 05°45'04" W	23.31'
C14	15°24'21"	162.00'	43.56'	S 12°47'08" W	43.43'
C15	03°06'09"	162.00'	8.77'	N 83°55'15" E	8.77'
C15A	15°03'00"	162.00'	42.55'	N 74°50'42" E	42.43'
C16	46°49'54"	162.00'	132.41'	S 43°54'15" W	128.76'
C17	05°16'11"	162.00'	14.89'	N 17°51'13" E	14.89'
C18	10°08'10"	162.00'	28.66'	N 10°09'03" E	28.62'
C19	30°36'15"	62.00'	33.12'	N 31°53'16" W	32.72'
C20	22°34'24"	62.00'	24.43'	N 58°28'30" W	24.27'
C21	18°45'36"	162.00'	53.04'	N 57°56'24" E	52.81'
C22	14°21'18"	162.00'	40.59'	N 27°39'59" E	40.46'
C23	04°52'58"	112.00'	9.54'	N 72°12'14" W	9.54'
C24	22°39'40"	112.00'	44.30'	N 85°58'32" W	44.01'

KAREN H. BRADY
2.5 ACRES
O.R. 70, PG. 177

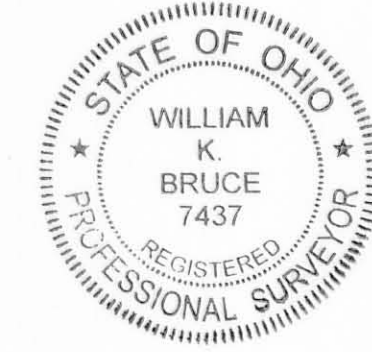


- LEGEND:
- ⊗ 1-1/4 INCH IRON PIPE FOUND
 - 5/8 INCH IRON ROD SET
 - 5/8 INCH IRON ROD FOUND
 - ⊙ MAG NAIL SET
 - ⊙ MAG NAIL FOUND
 - ⊙ RAILROAD SPIKE SET
 - ⊙ RAILROAD SPIKE FOUND
 - ▨ LIMITED COMMON AREA
 - ▭ UNIT NUMBER

- NOTES:
- EASEMENTS IF SHOWN ARE AS PROVIDED BY DEVELOPER. THE SURVEYOR DID NOT SEARCH FOR ADDITIONAL EASEMENTS.
 - THE WORD "CERTIFY" IS INTENDED TO BE AS DEFINED IN OHIO ADMINISTRATIVE CODE 4733-35-04(C).
 - BUILDING HEIGHT FROM PEAK OF ROOF TO GROUND: UNIT 561 IS 21.45'

SURVEYOR'S CERTIFICATION:

I DO HEREBY CERTIFY THAT THIS SURVEY OF LUDLOW BRIDGE CONDOMINIUMS PHASE XXII ACCURATELY REFLECTS THE LOCATION OF IMPROVEMENTS AND RECORDED EASEMENTS.



William K. Bruce
WILLIAM K. BRUCE
7437
PROFESSIONAL SURVEYOR

COPYRIGHT 2012 BY:
LEE SURVEYING & MAPPING CO., INC.
117 North Hadriever Street
Bellefontaine, OH 43111
(937) 593-7335
surveys@lsmcinc.us

ARCHITECT'S CERTIFICATION:

I DO HEREBY CERTIFY THAT THIS DRAWING ACCURATELY REFLECTS THE BUILDINGS "AS-BUILT OR CONSTRUCTED".



Karen R. Beasley
KAREN R. BEASLEY
12114
REGISTERED ARCHITECT

COPYRIGHT 2012 BY:
BEASLEY ARCHITECTURE & DESIGN
109 West Columbus Street
Bellefontaine, OH 43111
(937) 599-2323

PRE-APPROVAL *Suzanne M. Yantz*

PLAT CHECKED *Suzanne M. Yantz 11-28-12*

TRANSFERRED THIS 29th DAY OF November, 2012

AUDITOR, Michael E. Yovan, LOGAN COUNTY, OHIO

RECORDED IN PLAT CABINET B, SLIDE 129B

RECEIVED FOR RECORD AT 2:38:56 O'CLOCK P.M.

THIS 29th DAY OF November, 2012

Linda Hanson
RECORDER, LOGAN COUNTY, OHIO

2 WORKING DAYS BEFORE YOU DIG
CALL TOLL FREE 800-362-2764

10-13-15

Lee Surveying and Mapping Co., Inc.



Land Surveys • Topography • Subdivisions • Construction Layout

117 N. Madriver St.
Bellefontaine OH 43311



Phone: (937) 593-7335
Fax: (937) 593-7444
surveys@lsminc.us

VILLAGE BUILDERS & LENHART, INC. 0.211 ACRE (FOR MORTGAGE PURPOSES ONLY)

Lying in Virginia Military Survey 4990, City of Bellefontaine, Lake Township, Logan County, Ohio.

Being out of the Village Builders & Lenhart, Inc., 6.04 acre tract as deeded and described in Official Record 710, Page 550, Tract I of the Logan County Records of Deeds and being more particularly described as follows:

Beginning on a 5/8 inch iron rod found on the southeast corner of the 0.221 acre portion of Ludlow Bridge Condominiums – Phase XXVI (Plat Cabinet B, Slide 133B), on the west right-of-way of Stone Bridge Boulevard (a 24 feet wide private street).

THENCE, with the west right-of-way of Stone Bridge Boulevard, a curve to the left, having a central angle of 25°-26'-05", a radius of 62.00 feet, an arc length of 27.52 feet, a chord bearing S 32°-54'-28"E, a distance of 27.30 feet to a 5/8 inch iron rod found.

THENCE, with the westerly lines of the 0.666 acre portion of Ludlow Bridge Condominiums – Phase V (Plat Cabinet B, Slide 109B), the following two courses:

S 58°-25'-00"W, a distance of 33.67 feet to a 5/8 inch iron rod found.

S 39°-53'-29"W, a distance of 76.33 feet to a 5/8 inch iron rod found.

THENCE, N 41°-18'-32"W, a distance of 145.20 feet to a 5/8 inch iron rod found on the southwest corner of the said 0.221 acre portion of Ludlow Bridge Condominiums – Phase XXVI.

THENCE, with the south line of the said 0.221 acre portion of Ludlow Bridge Condominiums – Phase XXVI, S 86°-24'-38"E, a distance of 158.97 feet to the point of beginning.

Containing 0.211 acre.

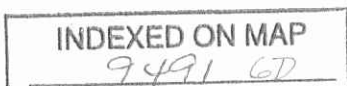
The basis for bearings is the south line of the 0.221 acre portion of Ludlow Bridge Condominiums – Phase XXVI, S 86°-24'-38"E, and all other bearings are from angles and distances measured in a field survey by Lee Surveying and Mapping Co., Inc. on December 18, 2014.

Description prepared by:

William K. Bruce
Professional Surveyor 7437
October 1, 2015



7150915



10-13-15
APPROVED

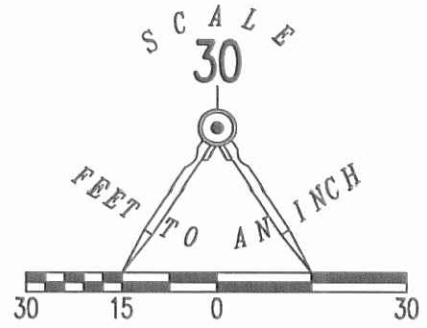
2 WORKING DAYS
BEFORE YOU DIG
 CALL TOLL FREE **800-362-2764**
 OHIO UTILITIES PROTECTION SERVICE

CAROL H. HILL
 0.574 ACRE
 O.R. 834, PG. 175

CURVE	DELTA ANGLE	RADIUS	ARC LENGTH	CHORD BEARING	CHORD LENGTH
C9B	25°26'05"	62.00'	27.52'	S 32°54'28" E	27.30'

PHASE XXVI
0.221 ACRE
 PLAT CABINET B, SLIDE 133B

**LUDLOW BRIDGE
 CONDOMINIUMS**



LEGEND:
 ○ 5/8 INCH IRON ROD FOUND

(BASIS FOR BEARINGS)
 S 86°24'38" E
 158.97'

0.211 ACRES

STONE BRIDGE BOULEVARD (24' PRIVATE STREET)

**SURVEY OF 0.211 ACRE FOR MORTGAGE
 PURPOSES ONLY OUT OF THE
 VILLAGE BUILDERS & LENHART, INC.
 6.04 ACRE TRACT
 OFFICIAL RECORD 710, PAGE 550
 TRACT I
 VIRGINIA MILITARY SURVEY 4990
 CITY OF BELLEFONTAINE
 LAKE TOWNSHIP
 LOGAN COUNTY, OHIO**

(0.579 ACRES)
 VILLAGE BUILDERS & LENHART, INC.
 6.04 ACRES
 O.R. 710, PG. 550
 TRACT I

PHASE V
0.666 ACRE
 PLAT CABINET B, SLIDE 109B

SURVEYED BY:

 WILLIAM K. BRUCE
 PROFESSIONAL SURVEYOR 7437
 DECEMBER 18, 2014

VIRGINIA MILITARY SURVEY 4990
 VIRGINIA MILITARY SURVEY 10086-10198



COPYRIGHT 2015 BY:
LEE SURVEYING & MAPPING CO., INC.
 117 North Madriver Street
 BELLEFONTAINE, OHIO 43311
 (937) 593-7335
 WWW.LSMINC.US
 surveys@lsminc.us
 KSS D0915 7150915 L-715-3

4262

4261

4257

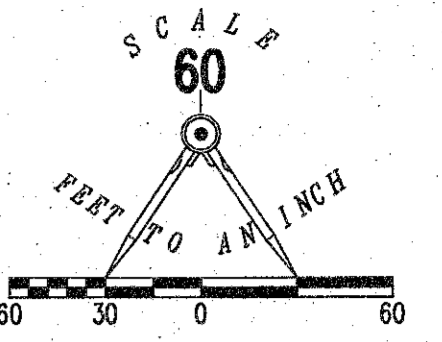
INDEXED ON MAP
 9491 6P

LUDLOW BRIDGE CONDOMINIUMS - PHASE XXVIII

6.04 ACRE TRACT, 1.00 ACRE TRACT, 8.05 ACRE TRACT OFFICIAL RECORD 710, PAGE 550, TRACTS I, II AND III

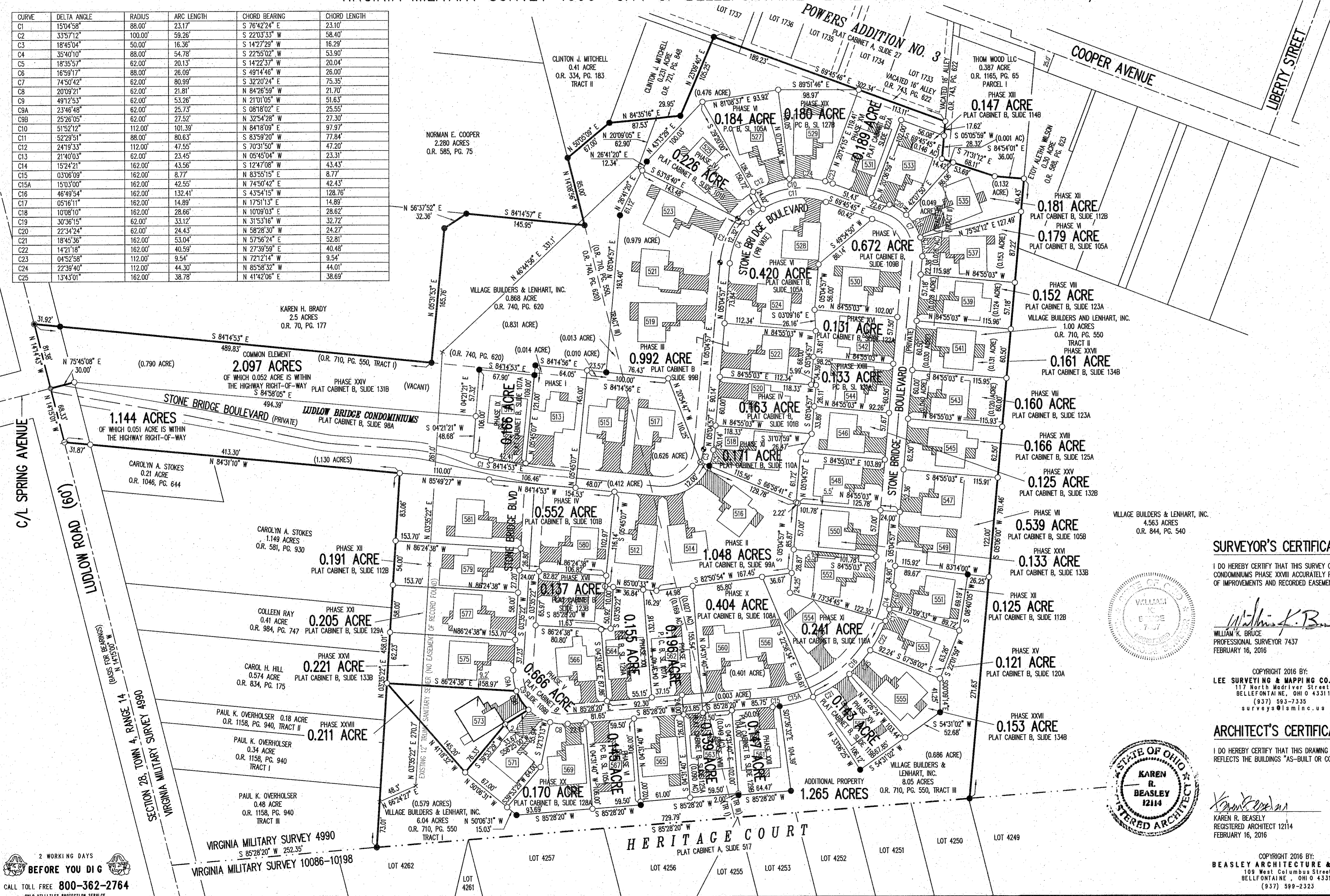
0.868 ACRE TRACT OFFICIAL RECORD 740, PAGE 620

VIRGINIA MILITARY SURVEY 4990 CITY OF BELLEFONTAINE LAKE TOWNSHIP LOGAN COUNTY, OHIO



- LEGEND:
- ⊙ 1-1/4 INCH IRON PIPE FOUND
 - 5/8 INCH IRON ROD SET
 - 5/8 INCH IRON ROD FOUND
 - ⊙ MAG NAIL SET
 - ⊙ MAG NAIL FOUND
 - ⊙ RAILROAD SPIKE SET
 - ⊙ RAILROAD SPIKE FOUND
 - ▨ LIMITED COMMON AREA
 - UNIT NUMBER

CURVE	DELTA ANGLE	RADIUS	ARC LENGTH	CHORD BEARING	CHORD LENGTH
C1	150°45'8"	88.00'	23.17'	S 76°42'24" E	23.10'
C2	335°7'12"	100.00'	59.26'	S 22°03'33" W	58.40'
C3	18°45'04"	50.00'	16.36'	S 14°27'29" W	16.29'
C4	35°40'10"	88.00'	54.78'	S 22°55'02" W	53.90'
C5	18°35'57"	62.00'	20.13'	S 14°22'37" W	20.04'
C6	165°9'17"	88.00'	26.09'	S 8°14'46" W	26.00'
C7	74°50'42"	62.00'	80.99'	S 32°20'24" E	75.35'
C8	20°09'21"	62.00'	21.81'	N 84°26'59" W	21.70'
C9	48°12'53"	62.00'	53.26'	N 21°01'05" W	51.63'
C9A	23°46'49"	62.00'	25.73'	S 08°18'02" E	25.55'
C9B	25°36'05"	62.00'	27.52'	N 32°54'28" E	27.30'
C10	51°52'12"	112.00'	101.39'	N 84°18'09" E	97.97'
C11	51°52'12"	88.00'	80.63'	S 83°59'20" W	77.84'
C12	24°19'33"	112.00'	47.55'	S 70°31'50" W	47.20'
C13	21°40'03"	62.00'	23.45'	N 05°45'04" W	23.31'
C14	15°24'21"	162.00'	43.56'	S 12°47'08" W	43.43'
C15	03°08'09"	162.00'	8.77'	N 83°55'15" E	8.77'
C15A	15°03'00"	162.00'	42.55'	N 74°50'42" E	42.43'
C16	46°49'54"	162.00'	132.41'	S 43°54'15" E	128.76'
C17	05°16'11"	162.00'	14.89'	N 10°09'03" E	14.89'
C18	10°08'10"	162.00'	28.86'	N 17°51'13" E	28.82'
C19	30°36'15"	62.00'	33.12'	N 31°53'16" W	32.72'
C20	22°34'24"	62.00'	24.43'	N 58°28'30" W	24.27'
C21	18°45'36"	162.00'	53.04'	N 57°56'24" E	52.81'
C22	14°21'18"	162.00'	40.59'	N 27°39'59" E	40.46'
C23	04°52'58"	112.00'	9.54'	N 72°12'14" W	9.54'
C24	22°39'40"	112.00'	44.30'	N 85°58'32" W	44.01'
C25	13°43'01"	162.00'	38.78'	N 41°42'06" E	38.69'



- NOTES:
- EASEMENTS IF SHOWN ARE AS PROVIDED BY DEVELOPER. THE SURVEYOR DID NOT SEARCH FOR ADDITIONAL EASEMENTS.
 - THE WORD "CERTIFY" IS INTENDED TO BE AS DEFINED IN OHIO ADMINISTRATIVE CODE 4733-35-04(C).
 - BUILDING HEIGHT FROM PEAK OF ROOF TO GROUND: UNIT 573 IS 25.5'

SURVEYOR'S CERTIFICATION:

I DO HEREBY CERTIFY THAT THIS SURVEY OF LUDLOW BRIDGE CONDOMINIUMS PHASE XXVIII ACCURATELY REFLECTS THE LOCATION OF IMPROVEMENTS AND RECORDED EASEMENTS.

William K. Bruce
 WILLIAM K. BRUCE
 PROFESSIONAL SURVEYOR 7437
 FEBRUARY 16, 2016

COPYRIGHT 2016 BY:
 LEE SURVEYING & MAPPING CO., INC.
 117 North Red River Street
 BELLEFONTAINE, OHIO 43311
 (937) 593-7335
 surveys@lsm-inc.us

ARCHITECT'S CERTIFICATION:

I DO HEREBY CERTIFY THAT THIS DRAWING ACCURATELY REFLECTS THE BUILDINGS "AS-BUILT OR CONSTRUCTED".

Karen R. Beasley
 KAREN R. BEASLEY
 REGISTERED ARCHITECT 12114
 FEBRUARY 16, 2016

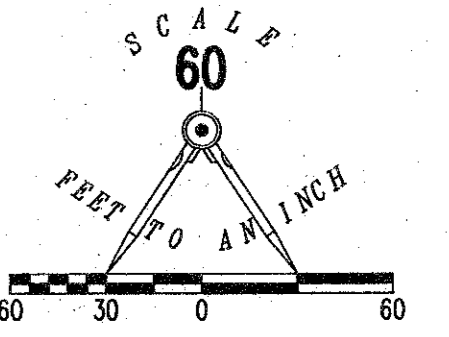
COPYRIGHT 2016 BY:
 BEASLEY ARCHITECTURE & DESIGN
 109 West Columbia Street
 BELLEFONTAINE, OHIO 43311
 (937) 599-2323

PRE-APPROVAL *Erin M. Yeats*
 PLAT CHECKED *Erin M. Yeats*
 TRANSFERRED THIS 10th DAY OF March, 2016
 AUDITOR, LOGAN COUNTY, OHIO
 RECORDED IN PLAT CABINET B, SLIDE 135B
 RECEIVED FOR RECORD AT 1:57 O'CLOCK P.M.
 THIS 2nd DAY OF March, 2016
Patricia A. Umser
 RECORDER, LOGAN COUNTY, OHIO

2 WORKING DAYS
 BEFORE YOU DIG
 CALL TOLL FREE 800-362-2764
 OHIO UTILITIES PROTECTION SERVICE

LUDLOW BRIDGE CONDOMINIUMS — PHASE XXIX

6.04 ACRE TRACT, 1.00 ACRE TRACT, 8.05 ACRE TRACT OFFICIAL RECORD 710, PAGE 550, TRACTS I, II AND III
 0.868 ACRE TRACT OFFICIAL RECORD 740, PAGE 620
 VIRGINIA MILITARY SURVEY 4990 CITY OF BELLEFONTAINE LAKE TOWNSHIP LOGAN COUNTY, OHIO



CURVE	DELTA ANGLE	RADIUS	ARC LENGTH	CHORD BEARING	CHORD LENGTH
C1	15°04'58"	88.00'	23.17'	S 76°42'24" E	23.10'
C2	33°57'12"	100.00'	59.26'	S 22°03'33" W	58.40'
C3	18°45'04"	50.00'	16.36'	S 14°27'29" W	16.29'
C4	35°40'10"	88.00'	54.78'	S 22°55'02" W	53.90'
C5	18°35'57"	62.00'	20.13'	S 14°22'37" W	20.04'
C6	16°59'17"	88.00'	26.09'	S 49°14'46" W	26.00'
C7	74°50'42"	62.00'	80.99'	S 32°20'24" E	75.35'
C8	20°09'21"	62.00'	21.81'	N 84°26'59" W	21.70'
C9	49°12'53"	62.00'	53.26'	N 21°01'05" W	51.63'
C9A	23°46'48"	62.00'	25.73'	S 08°18'02" E	25.55'
C9B	25°26'05"	62.00'	27.52'	N 32°54'28" W	27.30'
C10	51°52'12"	112.00'	101.39'	N 84°18'09" E	97.97'
C11	52°29'51"	88.00'	80.63'	S 83°59'20" W	77.84'
C12	24°19'33"	112.00'	47.55'	S 70°31'50" W	47.20'
C13	21°40'03"	62.00'	23.45'	N 05°45'04" W	23.31'
C14	15°24'21"	162.00'	43.56'	S 12°47'08" W	43.43'
C15	03°06'09"	162.00'	8.77'	N 83°55'15" E	8.77'
C15A	15°03'00"	162.00'	42.56'	N 74°50'42" E	42.43'
C16	46°49'54"	162.00'	132.41'	S 43°54'15" W	128.76'
C17	05°16'11"	162.00'	14.89'	N 17°51'13" E	14.89'
C18	10°08'10"	162.00'	28.66'	N 10°09'03" E	28.62'
C19	30°36'15"	62.00'	33.12'	N 31°53'16" W	32.72'
C20	22°34'24"	62.00'	24.43'	N 58°28'30" W	24.27'
C21	18°45'36"	162.00'	53.04'	N 57°56'24" E	52.81'
C22	14°21'18"	162.00'	40.59'	N 27°39'59" E	40.48'
C23	04°52'58"	112.00'	9.54'	N 72°12'14" W	9.54'
C24	22°39'40"	112.00'	44.30'	N 85°58'32" W	44.01'
C25	13°43'01"	162.00'	38.78'	N 41°42'06" E	38.69'



- LEGEND:
- 1-1/4 INCH IRON PIPE FOUND
 - 5/8 INCH IRON ROD SET
 - 5/8 INCH BY 30 INCH IRON ROD SET WITH PLASTIC I.D. CAP STAMPED "P.S. 8533"
 - 5/8 INCH IRON ROD FOUND
 - MAG NAIL SET
 - MAG NAIL FOUND
 - RAILROAD SPIKE SET
 - RAILROAD SPIKE FOUND
 - ▨ LIMITED COMMON AREA
 - [] UNIT NUMBER

NOTES:

- EASEMENTS IF SHOWN ARE AS PROVIDED BY DEVELOPER. THE SURVEYOR DID NOT SEARCH FOR ADDITIONAL EASEMENTS.
- THE WORD "CERTIFY" IS INTENDED TO BE AS DEFINED IN OHIO ADMINISTRATIVE CODE 4733-35-04(C).

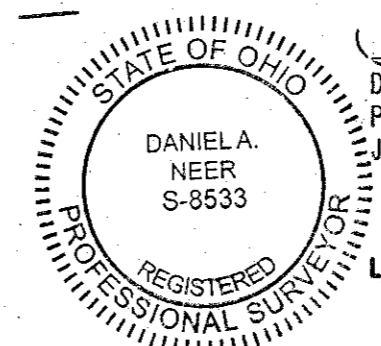
SURVEY CAP KEY:

- A = I.D. CAP STAMPED "LEE PS 7437"
- B = I.D. CAP ILLISIBLE
- D = NO CAP
- E = I.D. CAP STAMPED "LEE LS 6359"

Volume B Page 111A
 Filed in LOGAN COUNTY OH
 PATRICIA MYERS, COUNTY RECORDER
 06-25-2019 10:06:20 am Fee: \$6.40
 201906080419 PLAT

PRE-APPROVAL *Suzanne M. Cochran 6-18-19*
 PLAT CHECKED *Suzanne M. Cochran 6-18-19*
 TRANSFERRED THIS 25 DAY OF June, 2019
 AUDITOR, LOGAN COUNTY, OHIO
 RECORDED IN PLAT CABINET B, SLIDE 141A
 RECEIVED FOR RECORD AT 9:20 O'CLOCK A.M.
 THIS 25th DAY OF June, 2019
Patricia A. Myers
 RECORDER, LOGAN COUNTY, OHIO

SURVEYOR'S CERTIFICATION:
 I DO HEREBY CERTIFY THAT THIS SURVEY OF LUDLOW BRIDGE CONDOMINIUMS PHASE XXIX ACCURATELY REFLECTS THE LOCATION OF IMPROVEMENTS AND RECORDED EASEMENTS.



D. Neer
 DANIEL A. NEER
 PROFESSIONAL SURVEYOR NO. 8533
 JUNE 14, 2019
 COPYRIGHT 2019 BY:
 LEE SURVEYING & MAPPING CO., INC.
 117 North Medway Street
 BELLEFONTAINE, OHIO 43311
 (937) 593-7335
 WWW.LEE-SURVEYING.COM
 surveys@lee-surveying.com

2 WORKING DAYS
 BEFORE YOU DIG
 CALL TOLL FREE 800-362-2764
 OHIO UTILITIES PROTECTION SERVICE