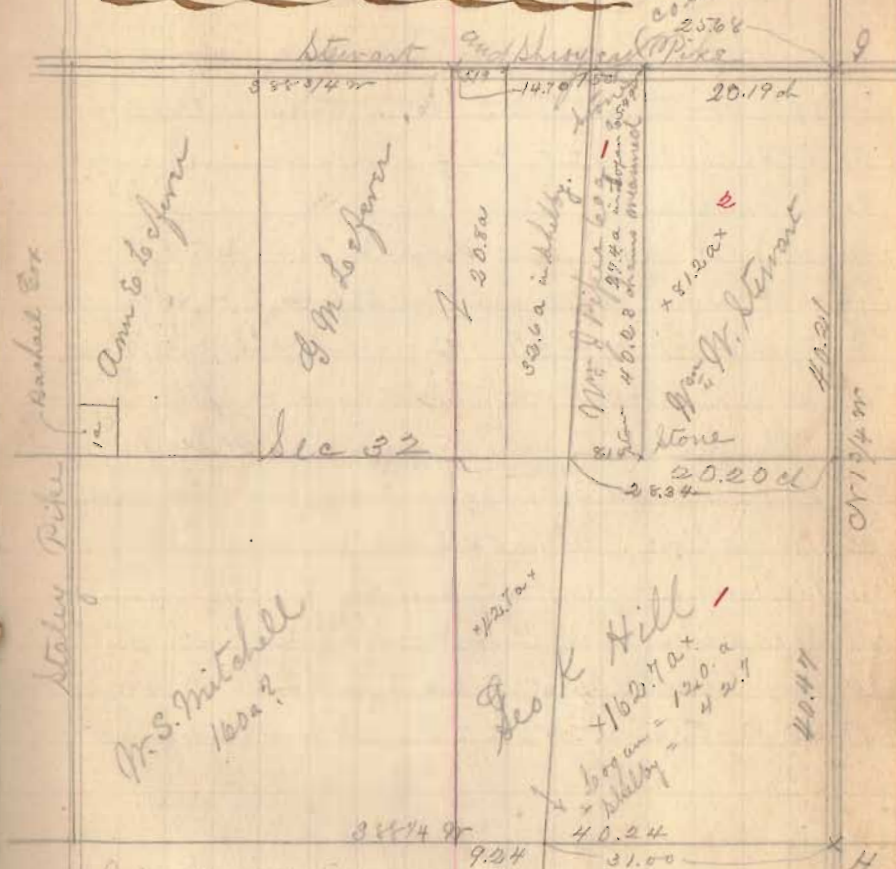


Shelby Co.  
Sec. No. 32 T. 2 R. 8

Line A start at H.S.E. < Sec 32  
Thence N 1 3/4 W 40.47 chains < between  
Go K Hill & N.W. Stewart mo. stone but < at  
center fence now as shown by Mrs Hill who  
was present at survey  
at 80.68 chains < stone N.E. < Sec 32  
in center Stewart & Shroyer pike  
strike 19 links west of < stone variation  
19 links west, True course N 1 3/4 W

Line B start at stone N.E. < Sec 32  
Thence with cut fence and line Sec 32  
S 88 3/4 W, at 20.19 ch < stone Stewart & Piper  
at 25.36 chains point suspended old Co line end of  
Stewart & S pike a gap of 2 rods not picked, 25.36 ch  
to east end old pike in Shelby Co  
at 35.33 chains cut fence between Piper & Logan  
Piper claims 20 rods wide  
at 40.35 chains < b = < peak  
Corner stone Piper & Stewart made des five  
Mr. St. Beech 16" N 28 3/4 E 240 1/2 links also  
34 < log house N 49 1/2 W 98 links  
N.W. < N.E. < Sec 32 chng. land 8' S 53 1/2 W 60 1/2 links  
Also Elm 24" N 30 3/4 W 175 1/2 links

Sec. No. 32 T. 2 R. 8



July 16 - 84  
Set monument for Co line at north line Sec 32 at  
20.19 ch S 88 3/4 W from N.E. Sec 32 and N 2 W 25 feet  
from Sec line being cut Stewart & Shroyer pike  
Monument marked as follows  
N side { S. 27. T. 2  
R 8 } S side = { S. 32  
T. 2 R 8 }  
E side Logan W side Shelby

343